

Well Location Plat BAT 33B-24-07-96

Section 24, Township 7 South, Range 96 West

Northwest Corner Sec. 24
2" Alum. Cap L.S. #17492
2006

N 88°58'10" W

5411.26'

Northeast Corner Sec. 24
3" Brass Cap L.S. #11643
1982

Note: Improvements Exist Within 400' of
Well Site. See Sheet 3.

Current Surface Land Use :
Open Range Land

500' 0' 1000'

Graphic Scale in Feet
1"=1000'

Bottom Hole:
BAT 33B-24-07-96

2305' FSL

1997' FEL

NAD83

Lat: 39.422036880°N

Long: 108.055779412°W

NAD27

Lat: 39.422058701°N

Long: 108.055148801°W

Surface:
BAT 33B-24-07-96

1937' FSL

1965' FWL

Gnd El= 5183

Pad El= 5182.5

NAD83

Lat: 39.420933288°N

Long: 108.060351659°W

NAD27

Lat: 39.420955102°N

Long: 108.059720853°W

UTM 13 NORTH

NAD 1983

NORTHING

14330548.354

EASTING

776086.413

SEC. 24
T.7S., R.96W.

Center 1/4 Corner Sec. 24
3" BLM Brass Cap - 1982

East 1/4 Corner Sec. 24
2 1/2" BLM Brass Cap
1982

West 1/4 Corner

Sec. 24
Position Computed from
BLM 1984 Re-Survey Map

South 1/16 Corner
Sec. 23/24 - 3" BLM
Brass Cap - 1982

BHL
33B

South 1/16 Corner Sec. 24/19
3" BLM Brass Cap - 1982

South 1/4 Corner Sec. 24
3" BLM Brass Cap - 1982

Southeast Corner Sec. 24
3" BLM Brass Cap - 1982

Prepared For Ursa Operating Company, LLC
Proposed BAT 33B-24-07-96 Well Situate in The
NE $\frac{1}{4}$ SW $\frac{1}{4}$ Section 24, Township 7 South, Range 96 West
of the 6 th. Principal Meridian, County of Garfield, State
of Colorado.

SURVEYOR'S CERTIFICATE

I, SCOTT E. AIBNER, A REGISTERED LAND SURVEYOR, LICENSED UNDER THE LAWS
OF THE STATE OF COLORADO DO HEREBY CERTIFY THAT THE SURVEY SHOWN
HEREON WAS PREPARED BY RIVER VALLEY SURVEY, INC., FOR URSA OPERATING
COMPANY, LLC, IN MY PRESENCE OR UNDER MY DIRECT SUPERVISION AND THAT THIS
PLAT IS A TRUE REPRESENTATION THEREOF.

BY:

SCOTT E. AIBNER, COLORADO REG. NO. 31143

Notes:

1. LATITUDE AND LONGITUDE COORDINATES ARE
DIFFERENTIALLY CORRECTED AND BASED ON PUBLISHED NGS
CONTROL STATION "KOEPSSELL". SYSTEM: UTM ZONE: 13 NORTH
DATUM: NAD 1983 (CONUS)
2. ELEVATIONS ARE BASED ON NAVD OF 1983.
3. ALL BOTTOM AND TOP HOLE LOCATIONS ARE MEASURED
90 DEGREES FROM SECTION LINE.
4. USGS QUADRANGLE MAP "PARACHUTE".
5. CURRENT SURFACE LAND USE: HAY FIELD.
6. PDOP AT THE TIME OF LOCATION OF SURFACE WELL = 2.4

- Field Surveyed Section
Corner
- Field Surveyed Quarter
Corner
- Calculated Section Corner
Location
- Field Surveyed $\frac{1}{16}$ Corner



River Valley Survey, Inc.
110 East 3rd. Street, Suite 213
Rifle, Colorado 81650
Ph: 970-379-7846

Project: Speakman A Pad

Field Date: 08-05-10

Date: 06-12-13

Scale: 1"= 1000'

Sheet: 1 of 4

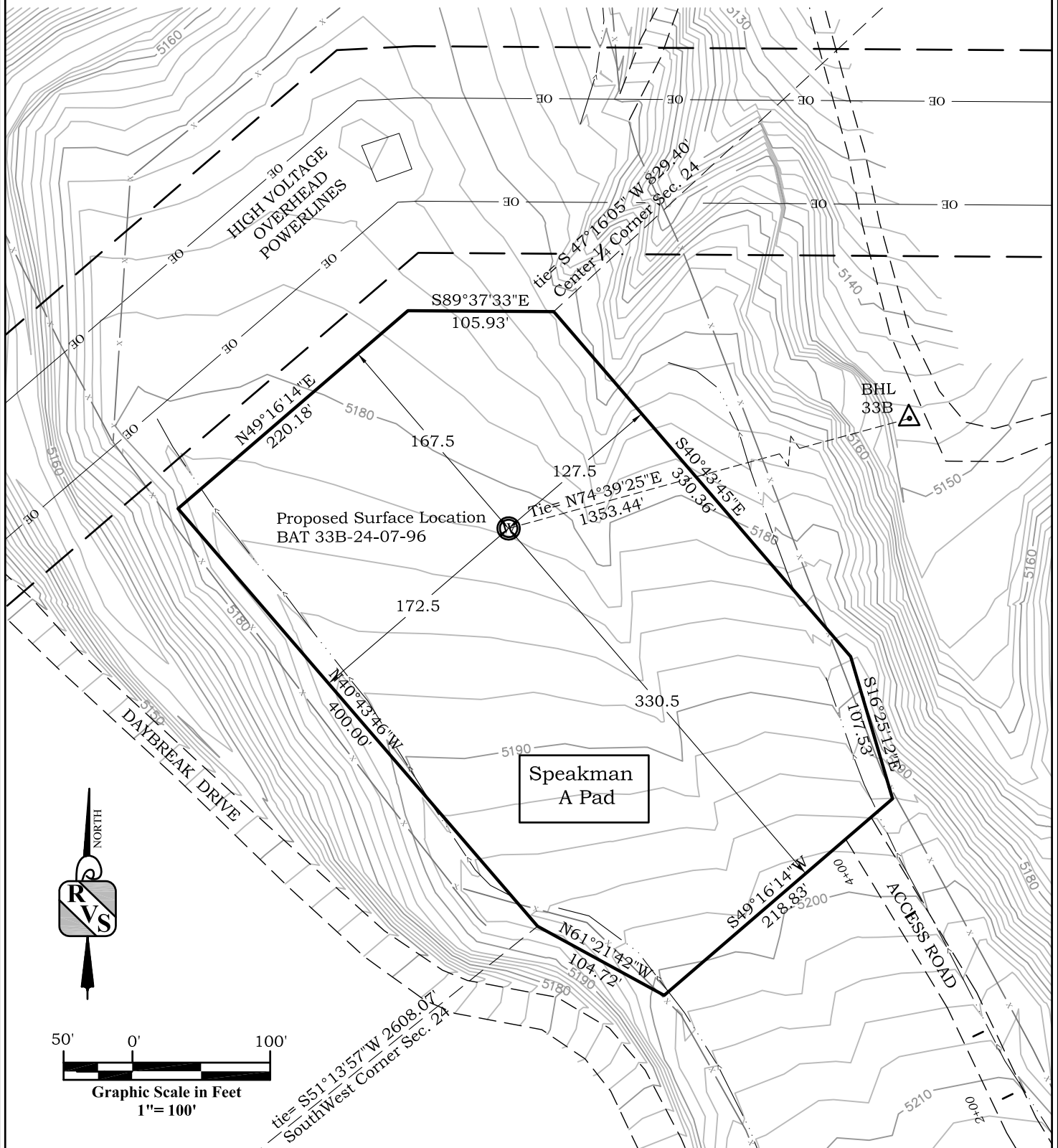
Well Location Plat Prepared For:
Ursa Operating Co., LLC

Situate In:
SW $\frac{1}{4}$ Section 24, T7S., R. 96 W. of the
6th P.M., Garfield County, Colorado



Location Drawing BAT 33B-24-07-96

Section 24, Township 7 South, Range 96 West



River Valley Survey, Inc.
110 East 3rd. Street, Suite 213
Rifle, Colorado 81650
Ph: 970-379-7846

Project: Speakman A Pad

Field Date: 08-05-10

Date: 06-12-13

Scale: 1"= 100'

Sheet: 2 of 4

Well Location Plat Prepared For:
Ursa Operating Co., LLC

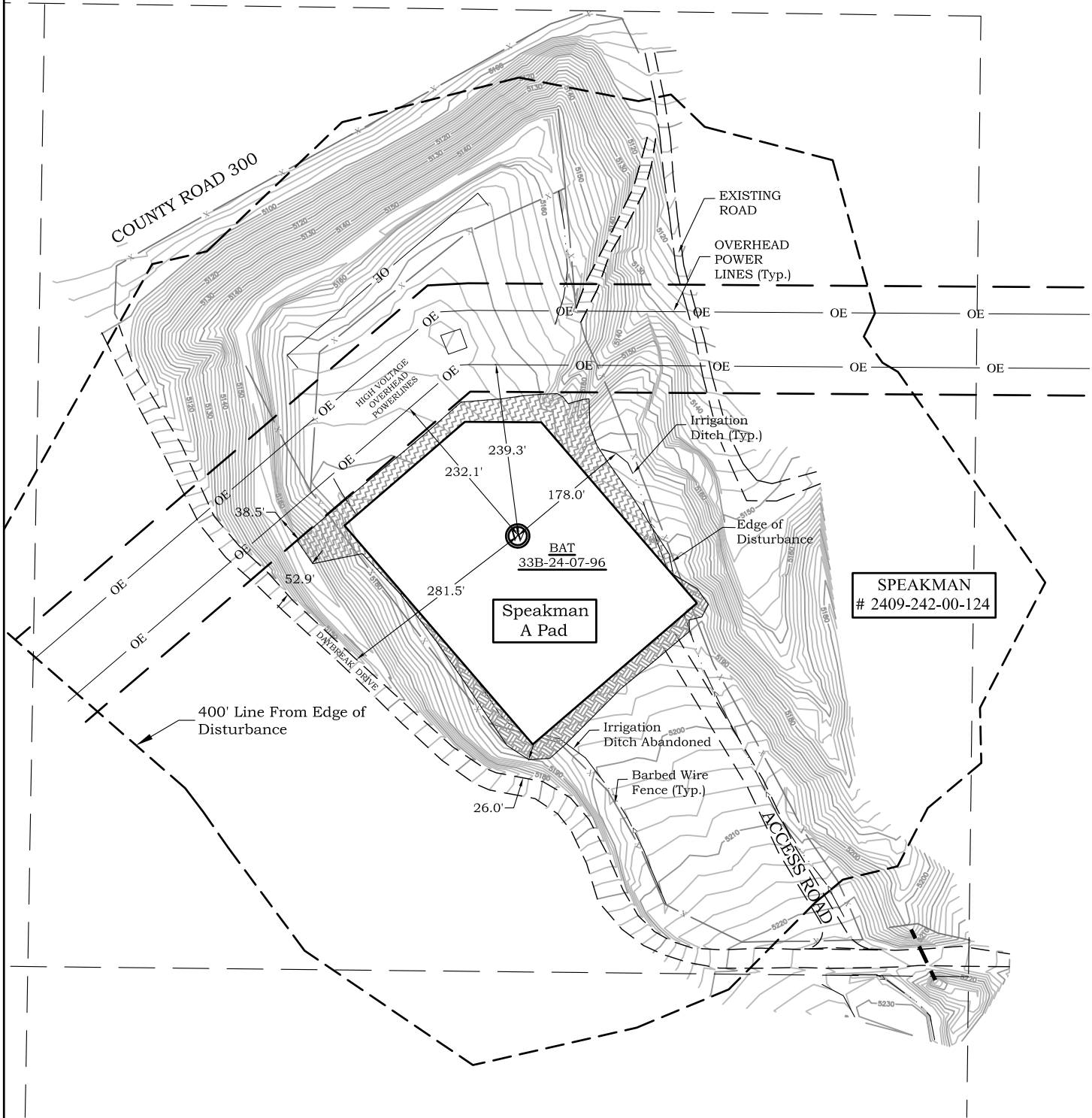
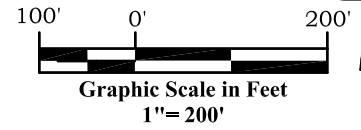
Situate In:
SW 1/4 Section 24, T7S., R. 96 W. of the
6th P.M., Garfield County, Colorado



Location Drawing

BAT 33B-24-07-96

Section 24, Township 7 South, Range 96 West



River Valley Survey, Inc.
110 East 3rd. Street, Suite 213
Rifle, Colorado 81650
Ph: 970-379-7846

Project: Speakman A Pad

Field Date: 08-05-10

Date: 06-12-13

Scale: 1"= 200'

Sheet: 3 of 4

Well Location Plat Prepared For:
Ursa Operating Co., LLC

Situate In:
SW 1/4 Section 24, T7S., R. 96 W. of the
6th P.M., Garfield County, Colorado



Facilities and Construction

Layout Drawing

Speakman A Pad

Section 24, Township 7 South, Range 96 West

40" 0' 80'

Graphic Scale in Feet
1"=80'

NORTH



150.0' EASEMENT

HIGH VOLTAGE
OVERHEAD
POWERLINES

Speakman A Pad
Pad Elev. = 5182.5'

Speakman
BAT 33B

Separators
22' x 15'

Combustor

Containment

Disturbance Area Table	
Item	Acerage
Pad and Cut/Fill Area	4.25
Access Road	0.47
Total= 4.72 ac±	

DAYBREAK DRIVE

ACCESS



River Valley Survey, Inc.
110 East 3rd. Street, Suite 213
Rifle, Colorado 81650
Ph: 970-379-7846

Project: Speakman A Pad

Field Date: 08-05-10

Date: 06-12-13

Scale: 1"= 80'

Sheet: 4 of 4

Well Location Plat Prepared For:
Ursa Operating Co., LLC

Situate In:
SW 1/4 Section 24, T7S., R. 96 W. of the
6th P.M., Garfield County, Colorado

