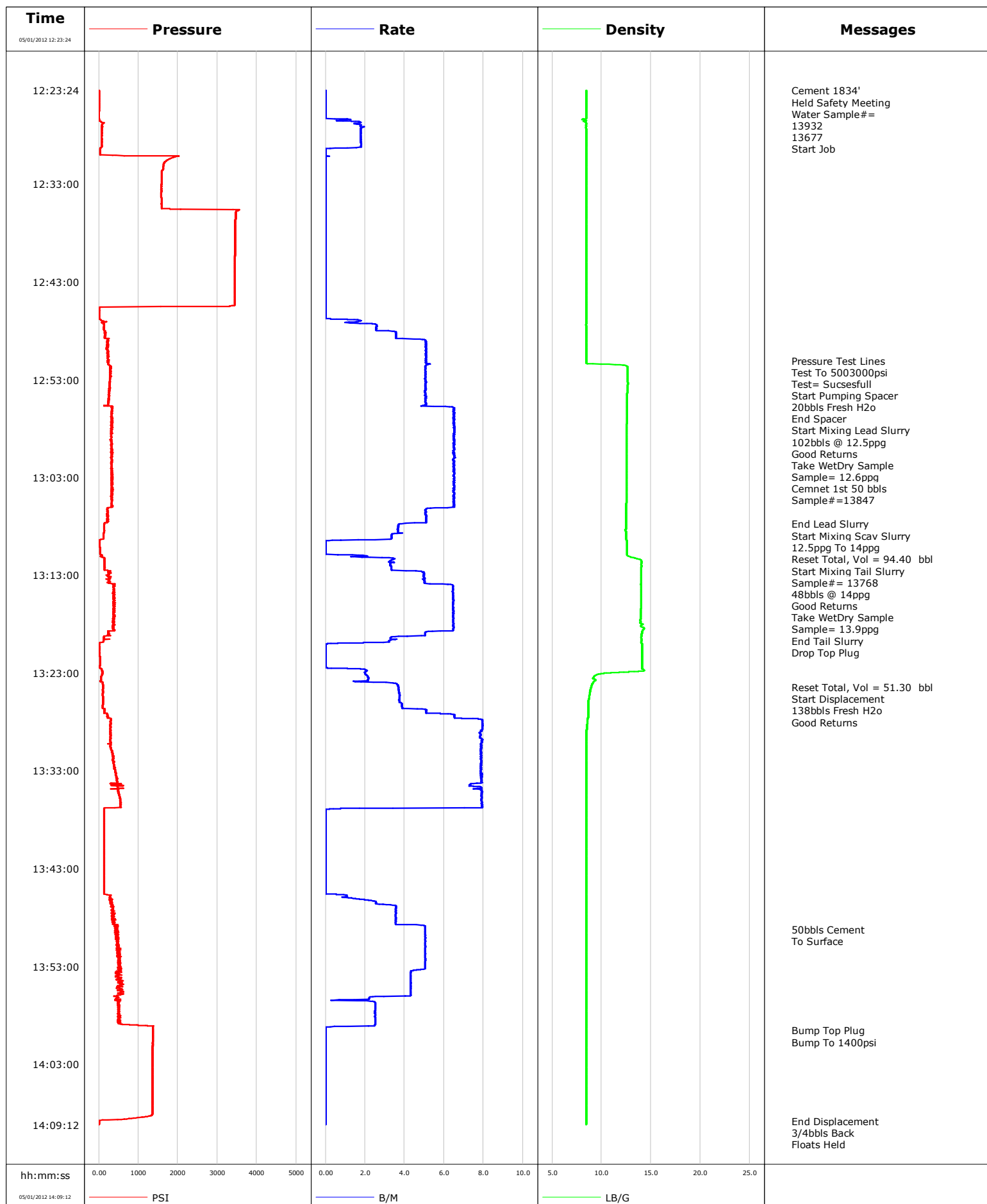


<b>Well</b>	EF11D-27	<b>Client</b>	ENCANA
<b>Field</b>	N PARACHUTE	<b>SIR No.</b>	C4HD-00132
<b>Engineer</b>		<b>Job Type</b>	SURFACE
<b>Country</b>	United States	<b>Job Date</b>	05-01-2012

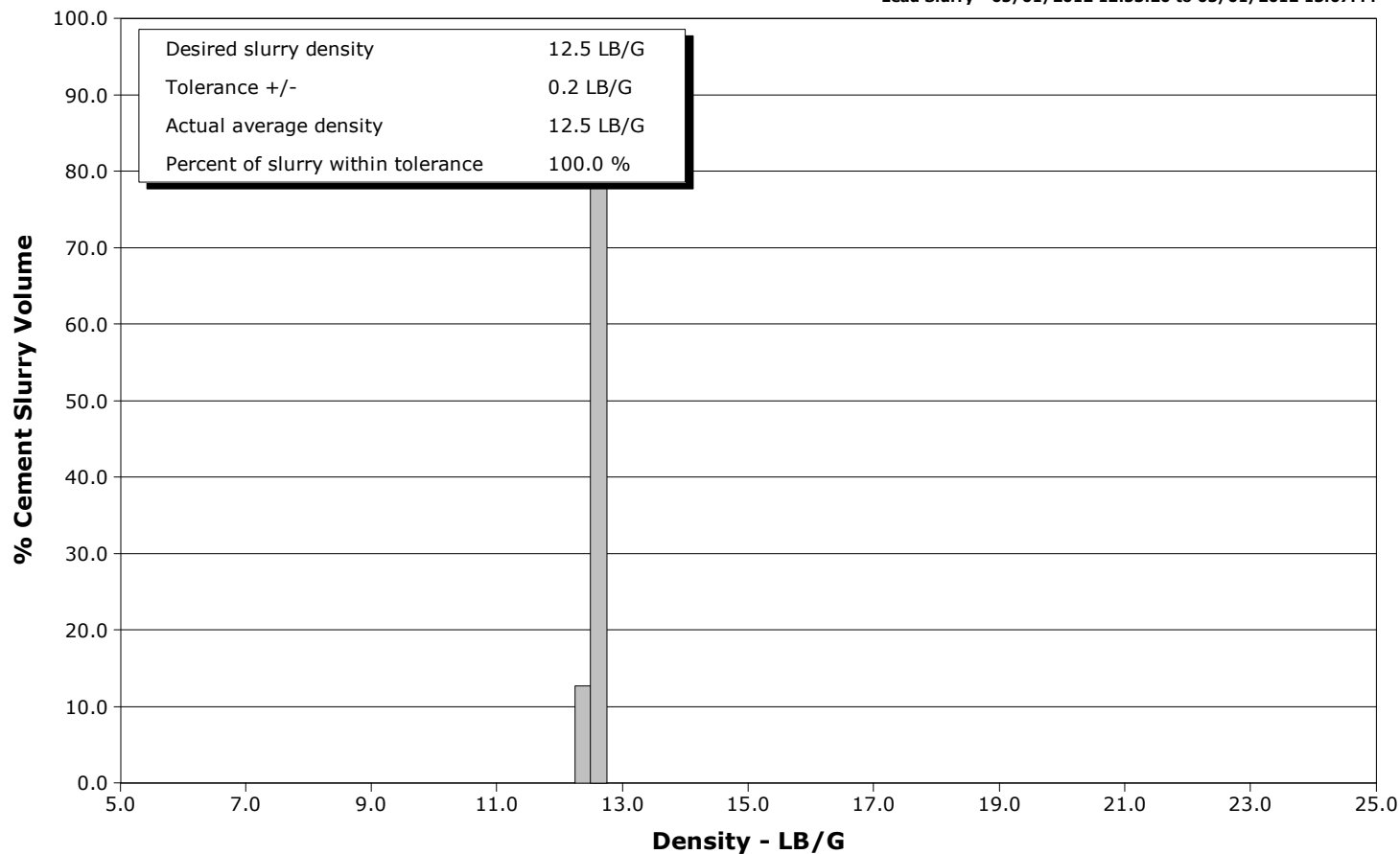


# Schlumberger Cementing Qa/Qc Density Report

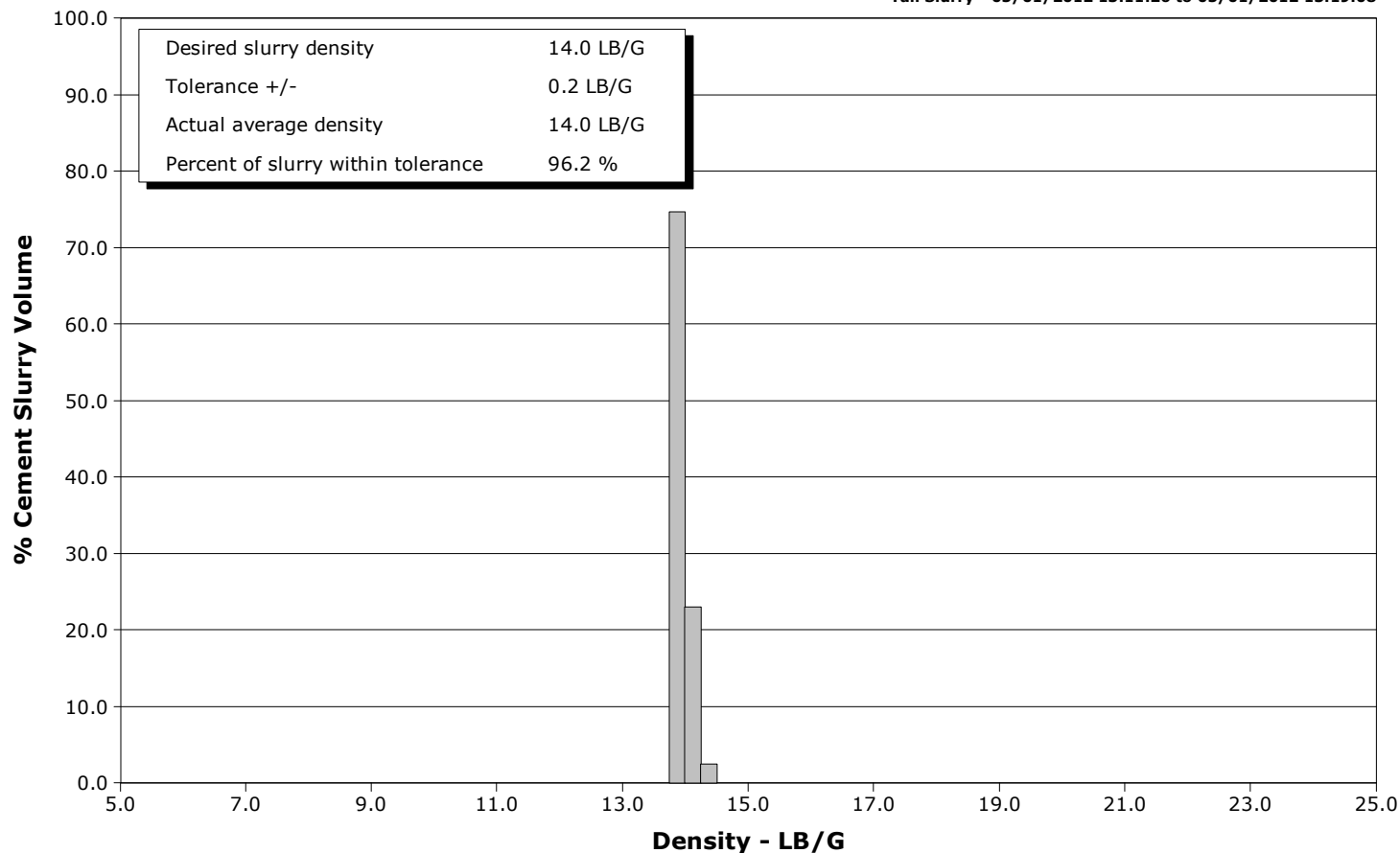
**Well** EF11D-27  
**Field** N PARACHUTE  
**Engineer**  
**Country** United States

**Client** ENCANA  
**SIR No.** C4HD-00132  
**Job Type** SURFACE  
**Job Date** 05-01-2012

**Lead Slurry - 05/01/2012 12:53:20 to 05/01/2012 13:07:44**



**Tail Slurry - 05/01/2012 13:11:26 to 05/01/2012 13:19:08**





# Cementing Service Report

				Customer ENCANA			Job Number C4HD-00132								
Well EF11D-27			Location (legal) N PARACHUTE			Schlumberger Location GCO			Job Start May/01/2012						
Field N PARACHUTE		Formation Name/Type			Deviation		Bit Size		Well MD		Well TVD				
County GARFIELD		State/Province Colorado			BHP		BHST		BHCT		Pore Press. Gradient				
Well Master 0631244192		API/UWI													
Rig Name PATTERSON 303		Drilled For Gas		Service Via		Casing/Liner									
Offshore Zone		Well Class		Well Type		Depth, ft		Size, in		Weight, lb/ft		Grade		Thread	
						1834.0		9.630		36.0		J55		8RD	
						0.0		0.000		0.0					
Drilling Fluid Type			Max. Density		Plastic Viscosity		Tubing/Drill Pipe								
Service Line Cementing			Job Type SURFACE			Depth,		Size,		Weight,		Grade		Thread	
Max. Allowed Tub. Press			Max. Allowed Ann. Press		WH Connection		Perforations/Open Hole								
Service Instructions 272 SKS 12.5ppg 158sks 14ppg tail Water test= good						Top,		Bottom,				No. of Shots		Total Interval	
Treat Down Casing			Displacement 138.0 bbl			Packer Type			Packer Depth						
Tubing Vol.			Casing Vol. 141.0 bbl			Annular Vol. 112.0 bbl			Openhole Vol. 263.0 bbl						
Casing/Tubing Secured <input checked="" type="checkbox"/>			1 Hole Vol. Circulated prior to Cement <input checked="" type="checkbox"/>			Casing Tools			Squeeze Job						
Lift Pressure 907 psi						Shoe Type Guide			Squeeze Type						
Pipe Rotated <input type="checkbox"/>			Pipe Reciprocated <input type="checkbox"/>			Shoe Depth 1834.0 ft			Tool Type						
No. Centralizers			Top Plugs 1		Bottom Plugs		Stage Tool Type			Tool Depth					
Cement Head Type Single						Stage Tool Depth			Tail Pipe Size						
Job Scheduled For May/01/2012			Arrived on Location May/01/2012		Leave Location May/01/2012		Collar Type Diff-Fill			Tail Pipe Depth					
							Collar Depth 1787.0 ft			Sqz. Total Vol.					
Date	Time 24-hr clock	Treating Pressure PSI	Flow Rate B/M	Density LB/G	Volume BBL	Message									
05/01/2012	11:33:42					Started Acquisition									
05/01/2012	12:23:24	1	0.0	8.46	0.0										
05/01/2012	12:23:25					Cement 1834'									
05/01/2012	12:23:25					Held Safety Meeting									
05/01/2012	12:23:25	1	0.0	8.46	0.0										
05/01/2012	12:23:26					Water Sample#=									
05/01/2012	12:23:26					13932									
05/01/2012	12:23:26					13677									
05/01/2012	12:23:26	1	0.0	8.46	0.0										
05/01/2012	12:23:27					Start Job									
05/01/2012	12:23:27	1	0.0	8.46	0.0										
05/01/2012	12:23:42	1	0.0	8.46	0.0										
05/01/2012	12:25:42	-1	0.0	8.45	0.0										
05/01/2012	12:27:42	70	1.8	8.46	2.2										
05/01/2012	12:29:42	26	0.0	8.46	5.1										
05/01/2012	12:31:42	1583	0.0	8.46	5.1										
05/01/2012	12:33:42	1581	0.0	8.46	5.1										
05/01/2012	12:35:42	3522	0.0	8.46	5.1										
05/01/2012	12:37:42	3450	0.0	8.46	5.1										
05/01/2012	12:39:42	3445	0.0	8.46	5.1										
05/01/2012	12:41:42	3442	0.0	8.46	5.1										

Well			Field		Job Start		Customer		Job Number	
EF11D-27			N PARACHUTE		May/01/2012		ENCANA		C4HD-00132	
Date	Time 24-hr clock	Treating Pressure PSI	Flow Rate B/M	Density LB/G	Volume BBL	Message				
05/01/2012	12:45:42	6	0.0	8.46	5.1					
05/01/2012	12:47:42	125	2.6	8.45	6.9					
05/01/2012	12:49:42	225	5.1	8.46	14.9					
05/01/2012	12:51:01					Pressure Test Lines				
05/01/2012	12:51:01	215	5.1	8.46	21.6					
05/01/2012	12:51:05					Test To 5003000psi				
05/01/2012	12:51:05					Test= Sucsesfull				
05/01/2012	12:51:05	236	5.1	8.46	22.0					
05/01/2012	12:51:42	320	5.0	12.63	25.1					
05/01/2012	12:52:00					Start Pumping Spacer				
05/01/2012	12:52:00	306	5.0	12.63	26.6					
05/01/2012	12:52:41					20bbls Fresh H2o				
05/01/2012	12:52:41	314	5.1	12.62	30.1					
05/01/2012	12:53:16					End Spacer				
05/01/2012	12:53:16	272	5.1	12.63	33.0					
05/01/2012	12:53:20					Start Mixing Lead Slurry				
05/01/2012	12:53:20	268	5.1	12.67	33.4					
05/01/2012	12:53:22					102bbls @ 12.5ppg				
05/01/2012	12:53:22					Good Returns				
05/01/2012	12:53:22					Take WetDry Sample				
05/01/2012	12:53:22	272	5.1	12.68	33.6					
05/01/2012	12:53:23					Sample= 12.6ppg				
05/01/2012	12:53:23					Cemnet 1st 50 bbls				
05/01/2012	12:53:23	272	5.1	12.68	33.6					
05/01/2012	12:53:42	264	5.0	12.64	35.2					
05/01/2012	12:55:42	229	4.8	12.57	45.3					
05/01/2012	12:57:42	302	6.5	12.55	58.3					
05/01/2012	12:58:43					Sample#=13847				
05/01/2012	12:58:43	316	6.5	12.53	64.9					
05/01/2012	12:59:42	305	6.5	12.54	71.3					
05/01/2012	13:01:42	316	6.5	12.51	84.2					
05/01/2012	13:03:42	334	6.5	12.51	97.2					
05/01/2012	13:05:42	332	6.5	12.50	110.2					
05/01/2012	13:07:42	141	4.1	12.48	120.9					
05/01/2012	13:07:44					End Lead Slurry				
05/01/2012	13:07:44	137	3.9	12.48	121.1					
05/01/2012	13:07:48					Start Mixing Scav Slurry				
05/01/2012	13:07:48	144	3.7	12.49	121.3					
05/01/2012	13:07:49					12.5ppg To 14ppg				
05/01/2012	13:07:49	137	3.7	12.49	121.4					
05/01/2012	13:09:42	21	0.0	12.57	127.0					
05/01/2012	13:11:23					Reset Total, Vol = 94.40 bbl				
05/01/2012	13:11:23	136	3.4	13.85	128.1					
05/01/2012	13:11:26					Start Mixing Tail Slurry				
05/01/2012	13:11:26	136	3.4	13.95	128.3					
05/01/2012	13:11:28					Sample#= 13768				
05/01/2012	13:11:28					48bbls @ 14ppg				
05/01/2012	13:11:28					Good Returns				
05/01/2012	13:11:28					Take WetDry Sample				
05/01/2012	13:11:28					Sample= 13.9ppg				
05/01/2012	13:11:28	136	3.3	13.98	128.4					
05/01/2012	13:11:42	142	3.5	14.02	129.2					
05/01/2012	13:13:42	285	5.0	13.98	137.7					
05/01/2012	13:15:42	389	6.5	13.98	150.3					

Well			Field		Job Start		Customer		Job Number	
EF11D-27			N PARACHUTE		May/01/2012		ENCANA		C4HD-00132	
Date	Time 24-hr clock	Treating Pressure PSI	Flow Rate B/M	Density LB/G	Volume BBL	Message				
05/01/2012	13:19:08					End Tail Slurry				
05/01/2012	13:19:08	245	5.1	14.06	171.9					
05/01/2012	13:19:10					Drop Top Plug				
05/01/2012	13:19:10	220	5.0	14.06	172.1					
05/01/2012	13:19:42	118	3.2	14.03	174.0					
05/01/2012	13:21:42	28	0.0	14.09	174.8					
05/01/2012	13:23:42	54	2.2	9.36	177.2					
05/01/2012	13:24:27					Reset Total, Vol = 51.30 bbl				
05/01/2012	13:24:27	104	3.7	8.93	179.4					
05/01/2012	13:24:31					Start Displacement				
05/01/2012	13:24:31	105	3.7	8.92	179.7					
05/01/2012	13:24:32					138bbbls Fresh H2o				
05/01/2012	13:24:32					Good Returns				
05/01/2012	13:24:32	103	3.7	8.92	179.7					
05/01/2012	13:25:42	106	3.7	8.72	184.1					
05/01/2012	13:27:42	298	7.7	8.59	193.8					
05/01/2012	13:29:42	298	7.9	8.43	209.6					
05/01/2012	13:31:42	374	7.9	8.46	225.4					
05/01/2012	13:33:42	436	7.9	8.46	241.1					
05/01/2012	13:35:42	537	7.9	8.46	256.7					
05/01/2012	13:37:42	127	0.0	8.46	265.7					
05/01/2012	13:39:42	131	0.0	8.46	265.7					
05/01/2012	13:41:42	132	0.0	8.46	265.7					
05/01/2012	13:43:42	131	0.0	8.46	265.7					
05/01/2012	13:45:42	245	1.1	8.46	265.7					
05/01/2012	13:47:42	343	3.5	8.46	271.2					
05/01/2012	13:49:16					50bbbls Cement				
05/01/2012	13:49:16					To Surface				
05/01/2012	13:49:16	478	5.0	8.46	277.5					
05/01/2012	13:49:42	449	5.0	8.46	279.7					
05/01/2012	13:51:42	528	5.0	8.46	289.8					
05/01/2012	13:53:42	486	4.3	8.46	299.6					
05/01/2012	13:55:42	555	4.3	8.46	308.2					
05/01/2012	13:57:42	501	2.5	8.46	313.6					
05/01/2012	13:59:33					Bump Top Plug				
05/01/2012	13:59:33	1368	0.0	8.46	317.2					
05/01/2012	13:59:35					Bump To 1400psi				
05/01/2012	13:59:35	1364	0.0	8.46	317.2					
05/01/2012	13:59:42	1362	0.0	8.46	317.2					
05/01/2012	14:01:42	1359	0.0	8.46	317.2					
05/01/2012	14:03:42	1356	0.0	8.46	317.2					
05/01/2012	14:05:42	1353	0.0	8.46	317.2					
05/01/2012	14:07:42	1349	0.0	8.46	317.2					
05/01/2012	14:08:50					End Displacement				
05/01/2012	14:08:50	7	0.0	8.46	317.2					
05/01/2012	14:08:51					3/4bbbls Back				
05/01/2012	14:08:51					Floats Held				
05/01/2012	14:08:51	7	0.0	8.46	317.2					
05/01/2012	14:09:08					End Job				
05/01/2012	14:09:08	9	0.0	8.46	317.2					

Well EF11D-27	Field N PARACHUTE	Job Start May/01/2012	Customer ENCANA	Job Number C4HD-00132
------------------	----------------------	--------------------------	--------------------	--------------------------

Post Job Summary

Average Pump Rates, bbl/min					Volume of Fluid Injected, bbl			
Slurry 5.0	N2	Mud 0.0	Maximum Rate 8.0	Total Slurry 317.2	Mud 0.0	Spacer 33.0	N2	
Treating Pressure Summary, psi					Breakdown Fluid			
Maximum 3566	Final 9	Average 728	Bump Plug to	Breakdown	Type	Volume	Density	
Avg. N2 Percent	Designed Slurry Volume 146.0 bbl	Displacement 145.2 bbl	Mix Water Temp 54 degF	Cement Circulated to Surface? <input checked="" type="checkbox"/>	Volume 50.0 bbl			
				Washed Thru Perfs <input type="checkbox"/>	To			
Customer or Authorized Representative CODY HUSEBY		Schlumberger Supervisor JASON CRICK			Circulation Lost <input type="checkbox"/>	Job Completed <input type="checkbox"/>		
					-		-	