

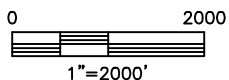
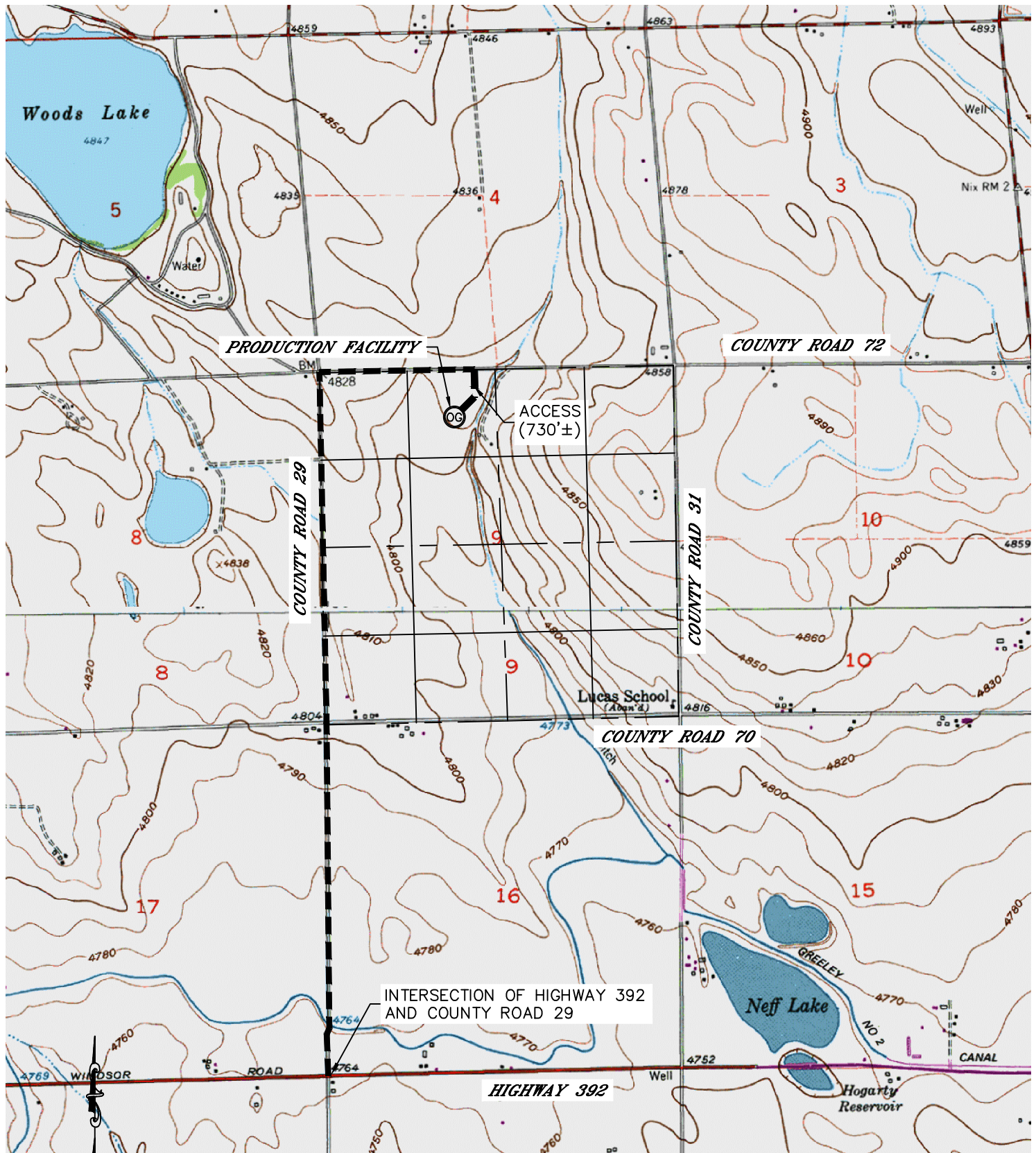


Lat40°, Inc. 1635 Foxtrail Drive, Suite 325 Loveland, CO 970-776-3321

# PRODUCTION FACILITY ACCESS ROAD MAP

MERRITT 6-66-9 PAD & CIRCLE B 6-66-9 PAD

SECTION: 9  
TOWNSHIP: 6N  
RANGE: 66W



## DIRECTIONS:

FROM THE INTERSECTION OF HIGHWAY 392 AND COUNTY ROAD 29 DRIVE NORTH ALONG COUNTY ROAD 29 2 MILES TO COUNTY ROAD 72; THENCE DRIVE EAST ALONG COUNTY ROAD 72 2450 FEET (±) TO A PROPOSED ACCESS ROAD TO THE SOUTH; THENCE SOUTH AND WEST ALONG SAID ACCESS ROAD 730' (±) TO PROPOSED PRODUCTION FACILITY.