

Well Name: GEOFFROY 11-1418

VERTICAL - ORIGINAL HOLE, 6/19/2013 4:10:32 PM

Well Header

API 05-123-17880	Business Unit WATTENBERG	District 15	Well Config VERTICAL
Original KB Elevation (ft) 4,978.00	KB - GL / MSL (ftKB) 11.00	Spud Date 2/5/1994	P & A Date

Comment
CHASED PLUG TO PBTD,

4/14/2010: BAIL DOWN TO TAG PLUG TOP @ 7635'.

Directions To Well
RD 13 / RD 46 - 1.7 W - .4 N INTO

Congressional Location

Quarter 1	Quarter 2	Quarter 3	Quarter 4	Section	Township	Twnshp N...	Range	Rng E/W Dir
		SE	SW	11	4	N	68	W

Bottom Hole Location

North-South Distance (ft)	From N or S Line	East-West Distance (ft)	From E or W Line

Plug Back Total Depths

Date	Depth (ftKB)	Method	Com
2/13/1994	7,617.0	TAG	
2/17/1994	7,617.0	CASED HOLE LOG	DEPTH LOGGER
4/1/2010	7,497.0	TAG	TAG FILL WITH B/S
4/14/2010	7,635.0	TAG	BAIL DOWN TO TAG.

Wellbore Sections

Section Des	Size (in)	Act Top (ftKB)	Act Btm (ftKB)
SURFACE	12 1/4	11.0	510.0
PRODUCTION	7 7/8	510.0	7,648.0

Zone Statuses

Zone Name	Status Date	Status	Job
J SAND	3/15/1994	PR	DRILLING - ORIGINAL, 2/5/1994 00:00
J SAND	3/29/2000	SI	RECOMPLETION, 3/28/2000 00:00
J SAND	6/25/2007	SI	COMMINGLE ZONES, 6/14/2007 00:00
J SAND	6/25/2007	PR	COMMINGLE ZONES, 6/14/2007 00:00
J SAND	4/21/2010	PR	CASING REPAIR, 3/30/2010 12:00
CODELL	4/7/2000	PR	RECOMPLETION, 3/28/2000 00:00
CODELL	6/25/2007	SI	COMMINGLE ZONES, 6/14/2007 00:00
CODELL	6/25/2007	PR	COMMINGLE ZONES, 6/14/2007 00:00
CODELL	4/21/2010	PR	CASING REPAIR, 3/30/2010 12:00

Casing Strings

Surface, 509.0ftKB

Casing Description	Run Date	OD (in)	Wt/Len (l...)	Grade	Top (ftKB)	MD (ftKB)
Surface	2/5/1994	8 5/8	24.00	J-55	11.0	509.0

Production, 5,195.1ftKB

Casing Description	Run Date	OD (in)	Wt/Len (l...)	Grade	Top (ftKB)	MD (ftKB)
Production	4/8/2010	3 1/2	7.70	B-70	11.3	5,195.1

Production, 5,246.0ftKB

Casing Description	Run Date	OD (in)	Wt/Len (l...)	Grade	Top (ftKB)	MD (ftKB)
Production	4/12/2010	3 1/2	7.70	M-75	11.3	5,246.0

Production, 7,642.0ftKB

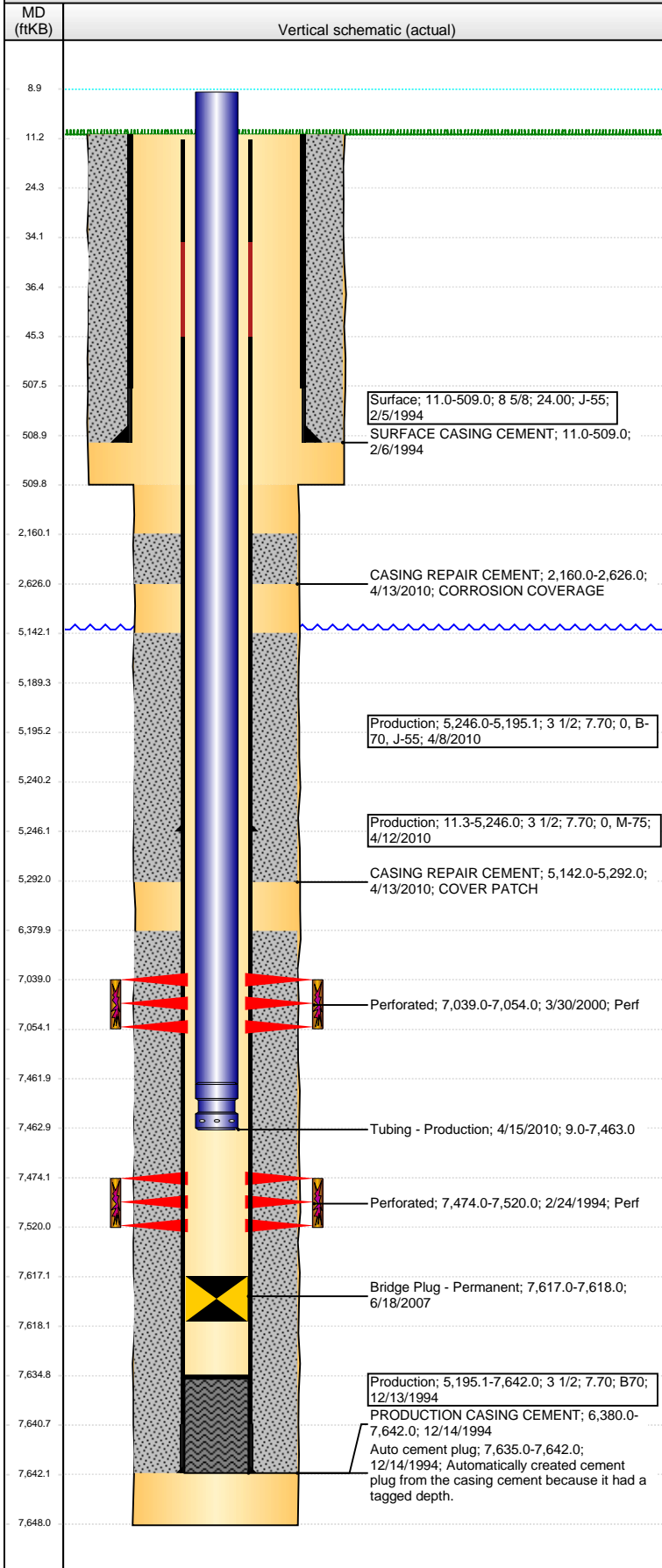
Casing Description	Run Date	OD (in)	Wt/Len (l...)	Grade	Top (ftKB)	MD (ftKB)
Production	12/13/1994	3 1/2	7.70	B70	11.0	7,642.0

Cement

Description	Top Depth (ftKB)	Bottom Depth (ftKB)
SURFACE CASING CEMENT	11.0	509.0
PRODUCTION CASING CEMENT	6,380.0	7,642.0
CASING REPAIR CEMENT	2,160.0	2,626.0
CASING REPAIR CEMENT	5,142.0	5,292.0

Tubing Components

Item Des	OD (in)	Wt (lb/ft)	Grade	Jts	Len (ft)	Btm (ftKB)	Btm (TVD) (ftKB)
Tubing	2 1/16	3.25	J-55	230	7,453.00	7,462.0	
Pump Seating Nipple	2 1/16	0.00	0	1	1.00	7,463.0	



Well Name: GEOFFROY 11-1418

VERTICAL - ORIGINAL HOLE, 6/19/2013 4:10:33 PM

Perforation Data

Zone	Brnch/St g	Entered Shot Total	Top (ftKB)	Btm (ftKB)	Date
CODELL, ORIGINAL HOLE		64	7,039.00	7,054.00	3/30/2000
J SAND, ORIGINAL HOLE		68	7,474.00	7,520.00	2/24/1994

Stimulations & Treatments

Date	Zone	Primary Job Type
3/11/1994	J SAND, ORIGINAL HOLE	DRILLING - ORIGINAL
Technical Result		Tech Result Details
Tech Result Note		
Comment		
Date	Zone	Primary Job Type
4/5/2000	CODELL, ORIGINAL HOLE	DRILLING - ORIGINAL
Technical Result		Tech Result Details
Tech Result Note		
Comment		

Other In Hole

Run Date	Des	OD (in)	Top (ftKB)	Btm (ftKB)
6/18/2007	Bridge Plug - Permanent	2.99	7,617.0	7,618.0

Logs

Date	Type	Top (ftKB)	Btm (ftKB)
2/13/1994	COMPENSATED DENSITY	3,850.0	7,646.0
2/13/1994	INDUCTION	509.0	7,647.0
2/17/1994	CBL/CCL/GR	6,200.0	7,613.0

