



**Bill Barrett Corporation**

## COMPANY DETAILS: BILL BARRETT CORP

Calculation Method: Minimum Curvature  
Error System: ISCWSA  
Scan Method: Closest Approach 3D  
Error Surface: Elliptical Conic  
Warning Method: Error Ratio

## REFERENCE INFORMATION

Co-ordinate (N/E) Reference: Well Circle B 6-66-9-0362BH, True North  
Vertical (TVD) Reference: KB @ 4837.0ft (Original Well Elev)  
Section (VS) Reference: Slot - (0.0N, 0.0E)  
Measured Depth Reference: KB @ 4837.0ft (Original Well Elev)  
Calculation Method: Minimum Curvature

## WELL DETAILS: Circle B 6-66-9-0362BH

+N/-S	+E/-W	Northing	Easting	Latitude	Longitude
0.0	0.0	1429173.97	3198959.12	40° 30' 33.408 N	104° 47' 4.092 W

## SECTION DETAILS

Sec	MD	Inc	Azi	TVD	+N/-S	+E/-W	DLeg	TFace	VSec	Target
1	0.0	0.00	0.00	0.0	0.0	0.0	0.00	0.00	0.0	
2	1000.0	0.00	0.00	1000.0	0.0	0.0	0.00	0.00	0.0	
3	1529.1	7.94	291.18	1527.4	13.2	-34.1	1.50	291.18	-9.0	
4	5612.5	7.94	291.18	5571.7	216.9	-559.9	0.00	0.00	-147.3	
5	6141.6	0.00	0.00	6099.1	230.1	-594.0	1.50	180.00	-156.3	
6	6641.6	0.00	0.00	6599.1	230.1	-594.0	0.00	0.00	-156.3	
7	7464.1	90.47	179.51	7120.0	-295.0	-589.5	11.00	179.51	364.4	CB 0362BH LP
8	11695.0	90.47	179.51	7085.2	-4525.7	-553.2	0.00	0.00	4559.4	

## PROJECT DETAILS: WELD COUNTY, COLORADO

Geodetic System: US State Plane 1983  
Datum: North American Datum 1983  
Ellipsoid: GRS 1980  
Zone: Colorado Northern Zone

## FORMATION TOP DETAILS

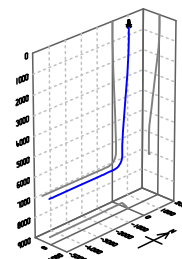
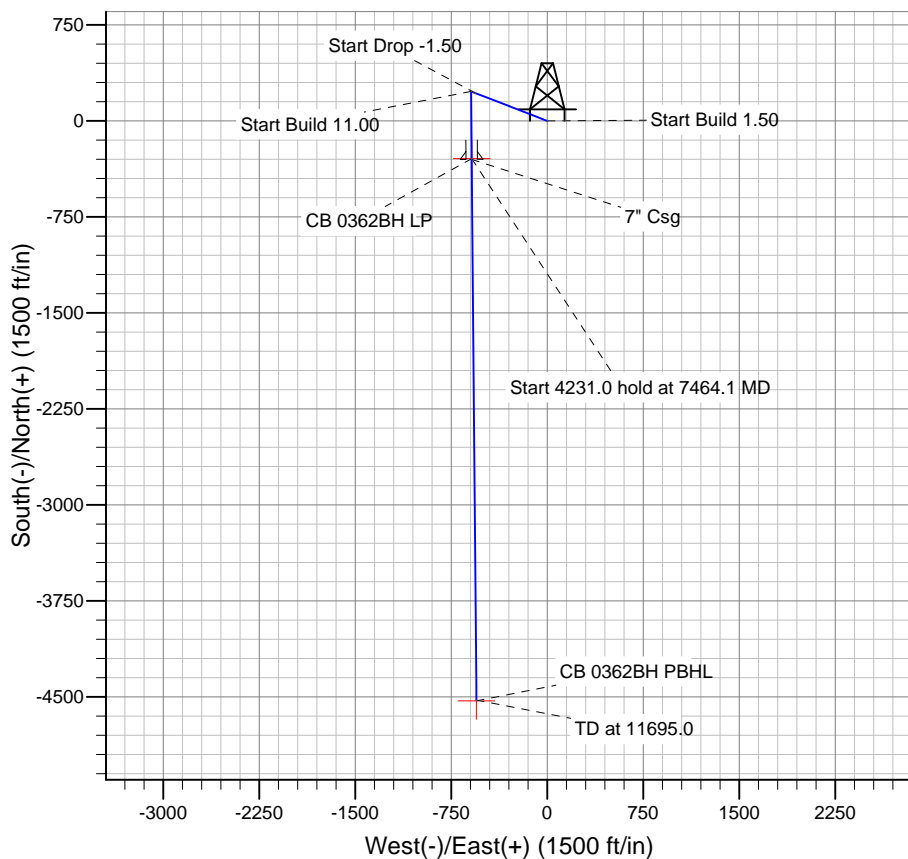
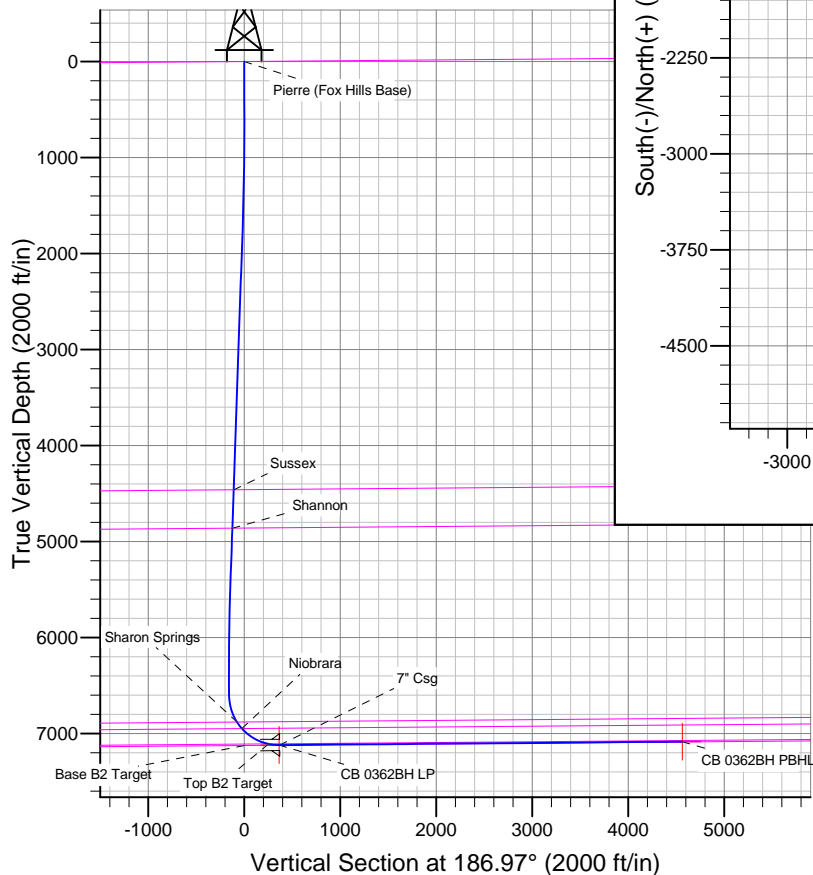
TVDPath	MDPath	Formation
		Base B2 Target
		Pierre (Fox Hills Base)
4461.3	4491.4	Sussex
4861.5	4895.5	Shannon
6881.2	6939.8	Sharon Springs
6947.8	7023.7	Niobrara
7108.5	7350.5	Top B2 Target

## CASING DETAILS

TVD	MD	Name	Size
7119.9	7470.0	7" Csg	7

## WELLBORE TARGET DETAILS

Name	TVD	+N/-S	+E/-W	Shape
CB 0362BH PBHL	7108.5	-4532.0	-553.4	Point
CB 0362BH LP	7120.0	-295.1	-589.5	Point



Azimuths to True North  
Magnetic North: 8.61°

Magnetic Field  
Strength: 52975.0snT  
Dip Angle: 67.07°  
Date: 6/17/2013  
Model: IGRF2010

# **BILL BARRETT CORP**

**WELD COUNTY, COLORADO**

**Circle B 6-66-9 Pad**

**Circle B 6-66-9-0362BH**

**Wellbore #1**

**Plan: Design #1**

## **Standard Planning Report**

**18 June, 2013**

# Bill Barrett Corp

## Planning Report

<b>Database:</b>	Compass	<b>Local Co-ordinate Reference:</b>	Well Circle B 6-66-9-0362BH
<b>Company:</b>	BILL BARRETT CORP	<b>TVD Reference:</b>	KB @ 4837.0ft (Original Well Elev)
<b>Project:</b>	WELD COUNTY, COLORADO	<b>MD Reference:</b>	KB @ 4837.0ft (Original Well Elev)
<b>Site:</b>	Circle B 6-66-9 Pad	<b>North Reference:</b>	True
<b>Well:</b>	Circle B 6-66-9-0362BH	<b>Survey Calculation Method:</b>	Minimum Curvature
<b>Wellbore:</b>	Wellbore #1		
<b>Design:</b>	Design #1		

<b>Project</b>	WELD COUNTY, COLORADO		
<b>Map System:</b>	US State Plane 1983	<b>System Datum:</b>	Mean Sea Level
<b>Geo Datum:</b>	North American Datum 1983		
<b>Map Zone:</b>	Colorado Northern Zone		

Site	Circle B 6-66-9 Pad				
Site Position:		Northing:	1,429,169.21 ft	Latitude:	40° 30' 33.372 N
From:	Lat/Long	Easting:	3,198,820.12ft	Longitude:	104° 47' 5.892 W
Position Uncertainty:	0.0 ft	Slot Radius:	"	Grid Convergence:	0.46 °

Well	Circle B 6-66-9-0362BH					
Well Position	+N-S	3.6 ft	Northing:	1,429,173.97 ft	Latitude:	40° 30' 33.408 N
	+E-W	139.0 ft	Easting:	3,198,959.12 ft	Longitude:	104° 47' 4.092 W
Position Uncertainty		0.0 ft	Wellhead Elevation:	ft	Ground Level:	4,814.0 ft

<b>Wellbore</b>	Wellbore #1				
<b>Magnetics</b>	<b>Model Name</b>	<b>Sample Date</b>	<b>Declination (°)</b>	<b>Dip Angle (°)</b>	<b>Field Strength (nT)</b>
	IGRF2010	6/17/2013	8.61	67.07	52,975

<b>Design</b>	Design #1			
<b>Audit Notes:</b>				
<b>Version:</b>	<b>Phase:</b>	PLAN	<b>Tie On Depth:</b>	0.0
<b>Vertical Section:</b>	<b>Depth From (TVD) (ft)</b>	<b>+N/-S (ft)</b>	<b>+E/-W (ft)</b>	<b>Direction (°)</b>
	0.0	0.0	0.0	186.97

<b>Plan Sections</b>										
Measured Depth (ft)	Inclination (°)	Azimuth (°)	Vertical Depth (ft)	+N/-S (ft)	+E/-W (ft)	Dogleg Rate (°/100ft)	Build Rate (°/100ft)	Turn Rate (°/100ft)	TFO (°)	Target
0.0	0.00	0.00	0.0	0.0	0.0	0.00	0.00	0.00	0.00	
1,000.0	0.00	0.00	1,000.0	0.0	0.0	0.00	0.00	0.00	0.00	
1,529.1	7.94	291.18	1,527.4	13.2	-34.1	1.50	1.50	0.00	291.18	
5,612.5	7.94	291.18	5,571.7	216.9	-559.9	0.00	0.00	0.00	0.00	
6,141.6	0.00	0.00	6,099.1	230.1	-594.0	1.50	-1.50	0.00	180.00	
6,641.6	0.00	0.00	6,599.1	230.1	-594.0	0.00	0.00	0.00	0.00	
7,464.1	90.47	179.51	7,120.0	-295.0	-589.5	11.00	11.00	0.00	179.51	CB 0362BH LP
11,695.0	90.47	179.51	7,085.2	-4,525.7	-553.2	0.00	0.00	0.00	0.00	

# Bill Barrett Corp

## Planning Report

<b>Database:</b>	Compass	<b>Local Co-ordinate Reference:</b>	Well Circle B 6-66-9-0362BH
<b>Company:</b>	BILL BARRETT CORP	<b>TVD Reference:</b>	KB @ 4837.0ft (Original Well Elev)
<b>Project:</b>	WELD COUNTY, COLORADO	<b>MD Reference:</b>	KB @ 4837.0ft (Original Well Elev)
<b>Site:</b>	Circle B 6-66-9 Pad	<b>North Reference:</b>	True
<b>Well:</b>	Circle B 6-66-9-0362BH	<b>Survey Calculation Method:</b>	Minimum Curvature
<b>Wellbore:</b>	Wellbore #1		
<b>Design:</b>	Design #1		

Planned Survey									
Measured Depth (ft)	Inclination (°)	Azimuth (°)	Vertical Depth (ft)	+N/-S (ft)	+E/-W (ft)	Vertical Section (ft)	Dogleg Rate (°/100ft)	Build Rate (°/100ft)	Turn Rate (°/100ft)
0.0	0.00	0.00	0.0	0.0	0.0	0.0	0.00	0.00	0.00
100.0	0.00	0.00	100.0	0.0	0.0	0.0	0.00	0.00	0.00
200.0	0.00	0.00	200.0	0.0	0.0	0.0	0.00	0.00	0.00
300.0	0.00	0.00	300.0	0.0	0.0	0.0	0.00	0.00	0.00
400.0	0.00	0.00	400.0	0.0	0.0	0.0	0.00	0.00	0.00
500.0	0.00	0.00	500.0	0.0	0.0	0.0	0.00	0.00	0.00
600.0	0.00	0.00	600.0	0.0	0.0	0.0	0.00	0.00	0.00
700.0	0.00	0.00	700.0	0.0	0.0	0.0	0.00	0.00	0.00
800.0	0.00	0.00	800.0	0.0	0.0	0.0	0.00	0.00	0.00
900.0	0.00	0.00	900.0	0.0	0.0	0.0	0.00	0.00	0.00
1,000.0	0.00	0.00	1,000.0	0.0	0.0	0.0	0.00	0.00	0.00
1,100.0	1.50	291.18	1,100.0	0.5	-1.2	-0.3	1.50	1.50	0.00
1,200.0	3.00	291.18	1,199.9	1.9	-4.9	-1.3	1.50	1.50	0.00
1,300.0	4.50	291.18	1,299.7	4.3	-11.0	-2.9	1.50	1.50	0.00
1,400.0	6.00	291.18	1,399.3	7.6	-19.5	-5.1	1.50	1.50	0.00
1,500.0	7.50	291.18	1,498.6	11.8	-30.5	-8.0	1.50	1.50	0.00
1,529.1	7.94	291.18	1,527.4	13.2	-34.1	-9.0	1.50	1.50	0.00
1,600.0	7.94	291.18	1,597.6	16.8	-43.2	-11.4	0.00	0.00	0.00
1,700.0	7.94	291.18	1,696.7	21.7	-56.1	-14.8	0.00	0.00	0.00
1,800.0	7.94	291.18	1,795.7	26.7	-69.0	-18.2	0.00	0.00	0.00
1,900.0	7.94	291.18	1,894.8	31.7	-81.9	-21.5	0.00	0.00	0.00
2,000.0	7.94	291.18	1,993.8	36.7	-94.7	-24.9	0.00	0.00	0.00
2,100.0	7.94	291.18	2,092.8	41.7	-107.6	-28.3	0.00	0.00	0.00
2,200.0	7.94	291.18	2,191.9	46.7	-120.5	-31.7	0.00	0.00	0.00
2,300.0	7.94	291.18	2,290.9	51.7	-133.4	-35.1	0.00	0.00	0.00
2,400.0	7.94	291.18	2,390.0	56.7	-146.3	-38.5	0.00	0.00	0.00
2,500.0	7.94	291.18	2,489.0	61.6	-159.1	-41.9	0.00	0.00	0.00
2,600.0	7.94	291.18	2,588.1	66.6	-172.0	-45.3	0.00	0.00	0.00
2,700.0	7.94	291.18	2,687.1	71.6	-184.9	-48.7	0.00	0.00	0.00
2,800.0	7.94	291.18	2,786.1	76.6	-197.8	-52.0	0.00	0.00	0.00
2,900.0	7.94	291.18	2,885.2	81.6	-210.6	-55.4	0.00	0.00	0.00
3,000.0	7.94	291.18	2,984.2	86.6	-223.5	-58.8	0.00	0.00	0.00
3,100.0	7.94	291.18	3,083.3	91.6	-236.4	-62.2	0.00	0.00	0.00
3,200.0	7.94	291.18	3,182.3	96.6	-249.3	-65.6	0.00	0.00	0.00
3,300.0	7.94	291.18	3,281.3	101.5	-262.1	-69.0	0.00	0.00	0.00
3,400.0	7.94	291.18	3,380.4	106.5	-275.0	-72.4	0.00	0.00	0.00
3,500.0	7.94	291.18	3,479.4	111.5	-287.9	-75.8	0.00	0.00	0.00
3,600.0	7.94	291.18	3,578.5	116.5	-300.8	-79.2	0.00	0.00	0.00
3,700.0	7.94	291.18	3,677.5	121.5	-313.6	-82.5	0.00	0.00	0.00
3,800.0	7.94	291.18	3,776.6	126.5	-326.5	-85.9	0.00	0.00	0.00
3,900.0	7.94	291.18	3,875.6	131.5	-339.4	-89.3	0.00	0.00	0.00
4,000.0	7.94	291.18	3,974.6	136.5	-352.3	-92.7	0.00	0.00	0.00
4,100.0	7.94	291.18	4,073.7	141.4	-365.1	-96.1	0.00	0.00	0.00
4,200.0	7.94	291.18	4,172.7	146.4	-378.0	-99.5	0.00	0.00	0.00
4,300.0	7.94	291.18	4,271.8	151.4	-390.9	-102.9	0.00	0.00	0.00
4,400.0	7.94	291.18	4,370.8	156.4	-403.8	-106.3	0.00	0.00	0.00
4,491.4	7.94	291.18	4,461.3	161.0	-415.5	-109.4	0.00	0.00	0.00
<b>Sussex</b>									
4,500.0	7.94	291.18	4,469.9	161.4	-416.6	-109.6	0.00	0.00	0.00
4,600.0	7.94	291.18	4,568.9	166.4	-429.5	-113.0	0.00	0.00	0.00
4,700.0	7.94	291.18	4,667.9	171.4	-442.4	-116.4	0.00	0.00	0.00
4,800.0	7.94	291.18	4,767.0	176.4	-455.3	-119.8	0.00	0.00	0.00
4,895.5	7.94	291.18	4,861.5	181.1	-467.6	-123.0	0.00	0.00	0.00
<b>Shannon</b>									

# Bill Barrett Corp

## Planning Report

<b>Database:</b>	Compass	<b>Local Co-ordinate Reference:</b>	Well Circle B 6-66-9-0362BH
<b>Company:</b>	BILL BARRETT CORP	<b>TVD Reference:</b>	KB @ 4837.0ft (Original Well Elev)
<b>Project:</b>	WELD COUNTY, COLORADO	<b>MD Reference:</b>	KB @ 4837.0ft (Original Well Elev)
<b>Site:</b>	Circle B 6-66-9 Pad	<b>North Reference:</b>	True
<b>Well:</b>	Circle B 6-66-9-0362BH	<b>Survey Calculation Method:</b>	Minimum Curvature
<b>Wellbore:</b>	Wellbore #1		
<b>Design:</b>	Design #1		

Planned Survey									
Measured Depth (ft)	Inclination (°)	Azimuth (°)	Vertical Depth (ft)	+N/-S (ft)	+E/-W (ft)	Vertical Section (ft)	Dogleg Rate (°/100ft)	Build Rate (°/100ft)	Turn Rate (°/100ft)
4,900.0	7.94	291.18	4,866.0	181.3	-468.1	-123.2	0.00	0.00	0.00
5,000.0	7.94	291.18	4,965.1	186.3	-481.0	-126.6	0.00	0.00	0.00
5,100.0	7.94	291.18	5,064.1	191.3	-493.9	-130.0	0.00	0.00	0.00
5,200.0	7.94	291.18	5,163.1	196.3	-506.8	-133.4	0.00	0.00	0.00
5,300.0	7.94	291.18	5,262.2	201.3	-519.6	-136.8	0.00	0.00	0.00
5,400.0	7.94	291.18	5,361.2	206.3	-532.5	-140.1	0.00	0.00	0.00
5,500.0	7.94	291.18	5,460.3	211.3	-545.4	-143.5	0.00	0.00	0.00
5,600.0	7.94	291.18	5,559.3	216.3	-558.3	-146.9	0.00	0.00	0.00
5,612.5	7.94	291.18	5,571.7	216.9	-559.9	-147.3	0.00	0.00	0.00
5,700.0	6.62	291.18	5,658.5	220.9	-570.2	-150.1	1.50	-1.50	0.00
5,800.0	5.12	291.18	5,758.0	224.6	-579.8	-152.6	1.50	-1.50	0.00
5,900.0	3.62	291.18	5,857.7	227.3	-586.9	-154.4	1.50	-1.50	0.00
6,000.0	2.12	291.18	5,957.5	229.2	-591.6	-155.7	1.50	-1.50	0.00
6,100.0	0.62	291.18	6,057.5	230.0	-593.8	-156.3	1.50	-1.50	0.00
6,141.6	0.00	0.00	6,099.1	230.1	-594.0	-156.3	1.50	-1.50	0.00
6,200.0	0.00	0.00	6,157.5	230.1	-594.0	-156.3	0.00	0.00	0.00
6,300.0	0.00	0.00	6,257.5	230.1	-594.0	-156.3	0.00	0.00	0.00
6,400.0	0.00	0.00	6,357.5	230.1	-594.0	-156.3	0.00	0.00	0.00
6,500.0	0.00	0.00	6,457.5	230.1	-594.0	-156.3	0.00	0.00	0.00
6,600.0	0.00	0.00	6,557.5	230.1	-594.0	-156.3	0.00	0.00	0.00
6,641.6	0.00	0.00	6,599.1	230.1	-594.0	-156.3	0.00	0.00	0.00
6,700.0	6.42	179.51	6,657.4	226.8	-594.0	-153.1	11.00	11.00	0.00
6,800.0	17.42	179.51	6,755.1	206.2	-593.8	-132.6	11.00	11.00	0.00
6,900.0	28.42	179.51	6,847.0	167.3	-593.5	-94.1	11.00	11.00	0.00
6,939.8	32.80	179.51	6,881.2	147.1	-593.3	-74.0	11.00	11.00	0.00
<b>Sharon Springs</b>									
7,000.0	39.42	179.51	6,929.9	111.6	-593.0	-38.8	11.00	11.00	0.00
7,023.7	42.03	179.51	6,947.8	96.1	-592.9	-23.5	11.00	11.00	0.00
<b>Niobrara</b>									
7,100.0	50.42	179.51	7,000.6	41.1	-592.4	31.1	11.00	11.00	0.00
7,200.0	61.42	179.51	7,056.5	-41.6	-591.7	113.1	11.00	11.00	0.00
7,300.0	72.42	179.51	7,095.7	-133.5	-590.9	204.2	11.00	11.00	0.00
7,350.5	77.98	179.51	7,108.5	-182.3	-590.5	252.6	11.00	11.00	0.00
<b>Top B2 Target</b>									
7,400.0	83.42	179.51	7,116.5	-231.1	-590.0	301.0	11.00	11.00	0.00
7,464.1	90.47	179.51	7,120.0	-295.1	-589.5	364.4	10.99	10.99	0.00
<b>CB 0362BH LP</b>									
7,470.0	90.47	179.51	7,119.9	-301.0	-589.4	370.3	0.00	0.00	0.00
<b>7" Csg</b>									
7,500.0	90.47	179.51	7,119.7	-331.0	-589.2	400.0	0.00	0.00	0.00
7,600.0	90.47	179.51	7,118.8	-431.0	-588.3	499.2	0.00	0.00	0.00
7,700.0	90.47	179.51	7,118.0	-531.0	-587.5	598.3	0.00	0.00	0.00
7,800.0	90.47	179.51	7,117.2	-630.9	-586.6	697.5	0.00	0.00	0.00
7,900.0	90.47	179.51	7,116.4	-730.9	-585.8	796.6	0.00	0.00	0.00
8,000.0	90.47	179.51	7,115.6	-830.9	-584.9	895.8	0.00	0.00	0.00
8,100.0	90.47	179.51	7,114.7	-930.9	-584.0	994.9	0.00	0.00	0.00
8,200.0	90.47	179.51	7,113.9	-1,030.9	-583.2	1,094.1	0.00	0.00	0.00
8,300.0	90.47	179.51	7,113.1	-1,130.9	-582.3	1,193.2	0.00	0.00	0.00
8,400.0	90.47	179.51	7,112.3	-1,230.9	-581.5	1,292.4	0.00	0.00	0.00
8,500.0	90.47	179.51	7,111.5	-1,330.9	-580.6	1,391.5	0.00	0.00	0.00
8,600.0	90.47	179.51	7,110.6	-1,430.9	-579.8	1,490.7	0.00	0.00	0.00
8,700.0	90.47	179.51	7,109.8	-1,530.9	-578.9	1,589.8	0.00	0.00	0.00
8,800.0	90.47	179.51	7,109.0	-1,630.9	-578.0	1,689.0	0.00	0.00	0.00

# Bill Barrett Corp

## Planning Report

<b>Database:</b>	Compass	<b>Local Co-ordinate Reference:</b>	Well Circle B 6-66-9-0362BH
<b>Company:</b>	BILL BARRETT CORP	<b>TVD Reference:</b>	KB @ 4837.0ft (Original Well Elev)
<b>Project:</b>	WELD COUNTY, COLORADO	<b>MD Reference:</b>	KB @ 4837.0ft (Original Well Elev)
<b>Site:</b>	Circle B 6-66-9 Pad	<b>North Reference:</b>	True
<b>Well:</b>	Circle B 6-66-9-0362BH	<b>Survey Calculation Method:</b>	Minimum Curvature
<b>Wellbore:</b>	Wellbore #1		
<b>Design:</b>	Design #1		

### Planned Survey

Measured Depth (ft)	Inclination (°)	Azimuth (°)	Vertical Depth (ft)	+N/-S (ft)	+E/-W (ft)	Vertical Section (ft)	Dogleg Rate (°/100ft)	Build Rate (°/100ft)	Turn Rate (°/100ft)
8,900.0	90.47	179.51	7,108.2	-1,730.9	-577.2	1,788.1	0.00	0.00	0.00
9,000.0	90.47	179.51	7,107.4	-1,830.9	-576.3	1,887.3	0.00	0.00	0.00
9,100.0	90.47	179.51	7,106.5	-1,930.9	-575.5	1,986.4	0.00	0.00	0.00
9,200.0	90.47	179.51	7,105.7	-2,030.9	-574.6	2,085.6	0.00	0.00	0.00
9,300.0	90.47	179.51	7,104.9	-2,130.8	-573.8	2,184.7	0.00	0.00	0.00
9,400.0	90.47	179.51	7,104.1	-2,230.8	-572.9	2,283.9	0.00	0.00	0.00
9,500.0	90.47	179.51	7,103.3	-2,330.8	-572.0	2,383.0	0.00	0.00	0.00
9,600.0	90.47	179.51	7,102.4	-2,430.8	-571.2	2,482.2	0.00	0.00	0.00
9,700.0	90.47	179.51	7,101.6	-2,530.8	-570.3	2,581.3	0.00	0.00	0.00
9,800.0	90.47	179.51	7,100.8	-2,630.8	-569.5	2,680.5	0.00	0.00	0.00
9,900.0	90.47	179.51	7,100.0	-2,730.8	-568.6	2,779.6	0.00	0.00	0.00
10,000.0	90.47	179.51	7,099.2	-2,830.8	-567.8	2,878.8	0.00	0.00	0.00
10,100.0	90.47	179.51	7,098.3	-2,930.8	-566.9	2,977.9	0.00	0.00	0.00
10,200.0	90.47	179.51	7,097.5	-3,030.8	-566.0	3,077.1	0.00	0.00	0.00
10,300.0	90.47	179.51	7,096.7	-3,130.8	-565.2	3,176.2	0.00	0.00	0.00
10,400.0	90.47	179.51	7,095.9	-3,230.8	-564.3	3,275.4	0.00	0.00	0.00
10,500.0	90.47	179.51	7,095.1	-3,330.8	-563.5	3,374.5	0.00	0.00	0.00
10,600.0	90.47	179.51	7,094.2	-3,430.8	-562.6	3,473.7	0.00	0.00	0.00
10,700.0	90.47	179.51	7,093.4	-3,530.7	-561.8	3,572.8	0.00	0.00	0.00
10,800.0	90.47	179.51	7,092.6	-3,630.7	-560.9	3,672.0	0.00	0.00	0.00
10,900.0	90.47	179.51	7,091.8	-3,730.7	-560.0	3,771.1	0.00	0.00	0.00
11,000.0	90.47	179.51	7,090.9	-3,830.7	-559.2	3,870.3	0.00	0.00	0.00
11,100.0	90.47	179.51	7,090.1	-3,930.7	-558.3	3,969.4	0.00	0.00	0.00
11,200.0	90.47	179.51	7,089.3	-4,030.7	-557.5	4,068.6	0.00	0.00	0.00
11,300.0	90.47	179.51	7,088.5	-4,130.7	-556.6	4,167.7	0.00	0.00	0.00
11,400.0	90.47	179.51	7,087.7	-4,230.7	-555.8	4,266.9	0.00	0.00	0.00
11,500.0	90.47	179.51	7,086.8	-4,330.7	-554.9	4,366.0	0.00	0.00	0.00
11,600.0	90.47	179.51	7,086.0	-4,430.7	-554.0	4,465.2	0.00	0.00	0.00
11,695.0	90.47	179.51	7,085.2	-4,525.7	-553.2	4,559.4	0.00	0.00	0.00
CB 0362BH PBHL									

### Casing Points

Measured Depth (ft)	Vertical Depth (ft)	Name	Casing Diameter (")	Hole Diameter (")
7,470.0	7,119.9	7" Csg	7	8-3/4

### Formations

Measured Depth (ft)	Vertical Depth (ft)	Name	Lithology	Dip (°)	Dip Direction (°)
	0.0	Pierre (Fox Hills Base)		-0.47	179.51
4,491.4	4,460.0	Sussex		-0.47	179.51
4,895.5	4,860.0	Shannon		-0.47	179.51
6,939.8	6,880.0	Sharon Springs		-0.47	179.51
7,023.7	6,947.0	Niobrara		-0.47	179.51
7,350.5	7,110.0	Top B2 Target		-0.47	179.51
	7,125.0	Base B2 Target		-0.47	179.51

**Bill Barrett Corp**  
Planning Report

<b>Database:</b>	Compass	<b>Local Co-ordinate Reference:</b>	Well Circle B 6-66-9-0362BH
<b>Company:</b>	BILL BARRETT CORP	<b>TVD Reference:</b>	KB @ 4837.0ft (Original Well Elev)
<b>Project:</b>	WELD COUNTY, COLORADO	<b>MD Reference:</b>	KB @ 4837.0ft (Original Well Elev)
<b>Site:</b>	Circle B 6-66-9 Pad	<b>North Reference:</b>	True
<b>Well:</b>	Circle B 6-66-9-0362BH	<b>Survey Calculation Method:</b>	Minimum Curvature
<b>Wellbore:</b>	Wellbore #1		
<b>Design:</b>	Design #1		