

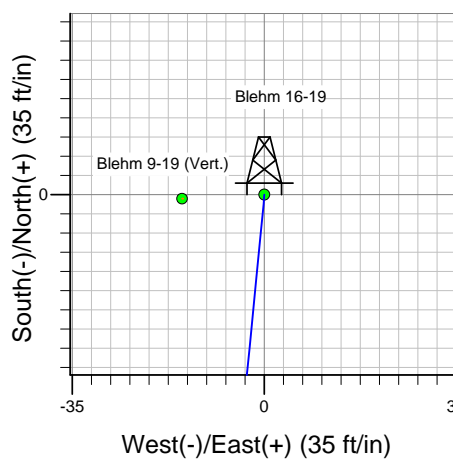
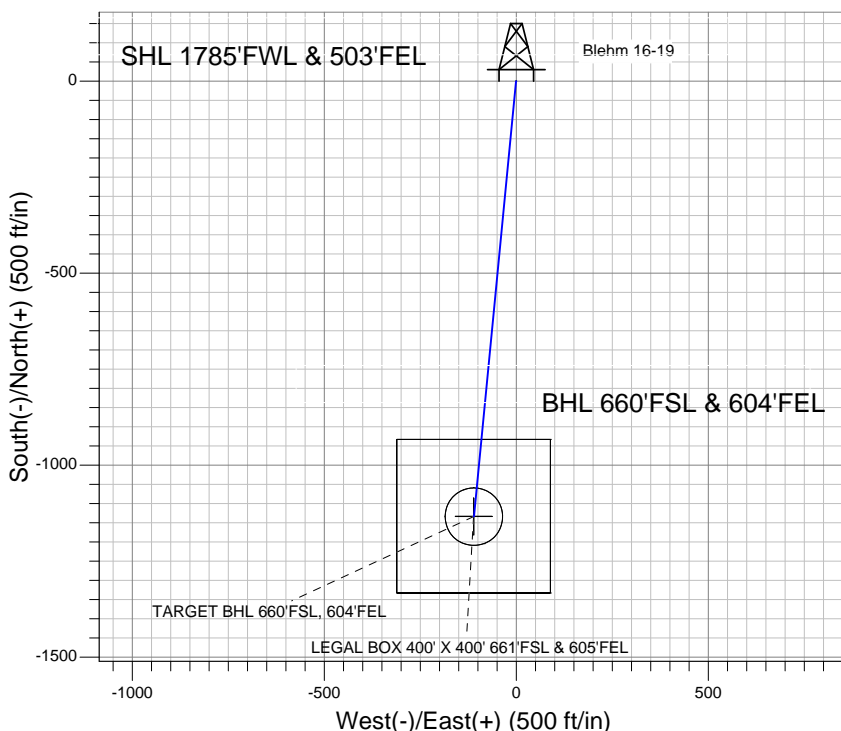
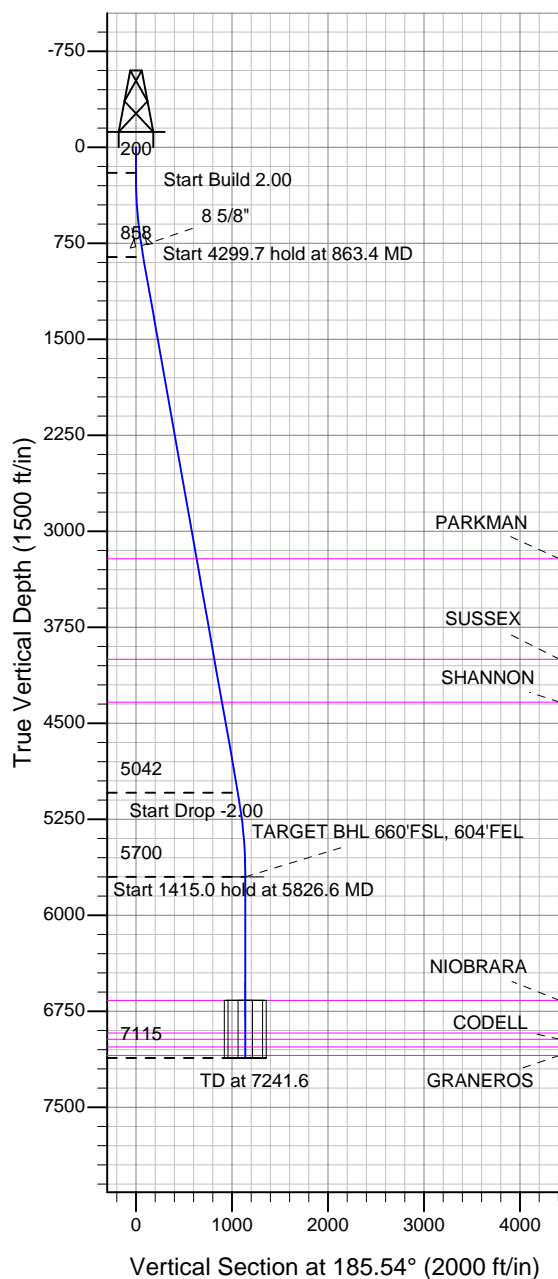
Well Name: Blehm 16-19

Surface Location: Blehm 19-L Pad Sec.19-T7N-R67W
 North American Datum 1983 , US State Plane 1983 , Colorado Northern Zone
 Ground Elevation: 4978.0

+N/-S	+E/-W	Northing	Easting	Latitude	Longitude	Slot
0.0	0.0	1446419.38	3158750.46	40.557417	-104.928671	

Original Well Elev WELL @ 4994.0ft (Original Well Elev)

Bayswater Exploration & Production, LLC



Blehm 19-L Pad Sec.19-T7N-R67W
 Blehm 16-19
 Plan #1 (5-20-13)
 9:58, May 24 2013



Azimuths to True North
 Magnetic North: 8.71°
 Magnetic Field
 Strength: 52991.1nT
 Dip Angle: 67.08°
 Date: 5/22/2013
 Model: IGRF2010

WELLBORE TARGET DETAILS (LAT/LONG)

Name	TVD	+N/-S	+E/-W	Latitude	Longitude	Shape
TARGET BHL 660'FSL, 604'FEL	5700.0	-1134.5	-110.0	40.554303	-104.929067	Point
LEGAL BOX 400' X 400' 661'FSL & 605'FEL	6665.0	-1133.5	-111.0	40.554306	-104.929070	Rectangle (Sides: L400.0 W400.0)
TARGET CIRCLE 660'FSL, 604'FEL	6665.0	-1134.5	-110.0	40.554303	-104.929067	Circle (Radius: 75.0)

SECTION DETAILS

Sec	MD	Inc	Azi	TVD	+N/-S	+E/-W	DLeg	TFace	VSec	Target
1	0.0	0.00	0.00	0.0	0.0	0.0	0.00	0.00	0.0	
2	200.0	0.00	0.00	200.0	0.0	0.0	0.00	0.00	0.0	
3	863.4	13.27	185.54	857.5	-76.1	-7.4	2.00	185.54	76.5	
4	5163.2	13.27	185.54	5042.5	-1058.4	-102.7	0.00	0.00	1063.3	
5	5826.6	0.00	0.00	5700.0	-1134.5	-110.0	2.00	180.00	1139.8	TARGET BHL 660'FSL, 604'FEL
6	7241.6	0.00	0.00	7115.0	-1134.5	-110.0	0.00	0.00	1139.8	



Directional

Bayswater Exploration & Production, LLC

SEC.19-T7N-R67W

Blehm 19-L Pad Sec.19-T7N-R67W

Blehm 16-19

Wellbore #1

Plan: Plan #1 (5-20-13)

Standard Planning Report

24 May, 2013



Directional

Database:	Landmark	Local Co-ordinate Reference:	Well Blehm 16-19
Company:	Bayswater Exploration & Production, LLC	TVD Reference:	WELL @ 4994.0ft (Original Well Elev)
Project:	SEC.19-T7N-R67W	MD Reference:	WELL @ 4994.0ft (Original Well Elev)
Site:	Blehm 19-L Pad Sec.19-T7N-R67W	North Reference:	True
Well:	Blehm 16-19	Survey Calculation Method:	Minimum Curvature
Wellbore:	Wellbore #1		
Design:	Plan #1 (5-20-13)		

Project	SEC.19-T7N-R67W, Weld County, CO		
Map System:	US State Plane 1983	System Datum:	Mean Sea Level
Geo Datum:	North American Datum 1983		Using Well Reference Point
Map Zone:	Colorado Northern Zone		Using geodetic scale factor

Site	Blehm 19-L Pad Sec.19-T7N-R67W				
Site Position:		Northing:	1,446,418.56ft	Latitude:	40.557415
From:	Lat/Long	Easting:	3,158,735.46ft	Longitude:	-104.928725
Position Uncertainty:	0.0 ft	Slot Radius:	"	Grid Convergence:	0.37 °

Well	Blehm 16-19					
Well Position	+N-S	0.7 ft	Northing:	1,446,419.38 ft	Latitude:	40.557417
	+E-W	15.0 ft	Easting:	3,158,750.46 ft	Longitude:	-104.928671
Position Uncertainty		0.0 ft	Wellhead Elevation:	ft	Ground Level:	4,978.0 ft

Wellbore	Wellbore #1				
Magnetics	Model Name	Sample Date	Declination (°)	Dip Angle (°)	Field Strength (nT)
	IGRF2010	5/22/2013	8.71	67.08	52,991

Design	Plan #1 (5-20-13)			
Audit Notes:				
Version:	Phase:	PROTOTYPE	Tie On Depth:	0.0
Vertical Section:	Depth From (TVD) (ft)	+N/-S (ft)	+E/-W (ft)	Direction (°)
	0.0	0.0	0.0	185.54

Plan Sections										
Measured Depth (ft)	Inclination (°)	Azimuth (°)	Vertical Depth (ft)	+N/-S (ft)	+E/-W (ft)	Dogleg Rate (°/100ft)	Build Rate (°/100ft)	Turn Rate (°/100ft)	TFO (°)	Target
0.0	0.00	0.00	0.0	0.0	0.0	0.00	0.00	0.00	0.00	
200.0	0.00	0.00	200.0	0.0	0.0	0.00	0.00	0.00	0.00	
863.4	13.27	185.54	857.5	-76.1	-7.4	2.00	2.00	0.00	185.54	
5,163.2	13.27	185.54	5,042.5	-1,058.4	-102.7	0.00	0.00	0.00	0.00	
5,826.6	0.00	0.00	5,700.0	-1,134.5	-110.0	2.00	-2.00	0.00	180.00	TARGET BHL 660'I
7,241.6	0.00	0.00	7,115.0	-1,134.5	-110.0	0.00	0.00	0.00	0.00	

Database:	Landmark	Local Co-ordinate Reference:	Well Blehm 16-19
Company:	Bayswater Exploration & Production, LLC	TVD Reference:	WELL @ 4994.0ft (Original Well Elev)
Project:	SEC.19-T7N-R67W	MD Reference:	WELL @ 4994.0ft (Original Well Elev)
Site:	Blehm 19-L Pad Sec.19-T7N-R67W	North Reference:	True
Well:	Blehm 16-19	Survey Calculation Method:	Minimum Curvature
Wellbore:	Wellbore #1		
Design:	Plan #1 (5-20-13)		

Planned Survey									
Measured Depth (ft)	Inclination (°)	Azimuth (°)	Vertical Depth (ft)	+N/-S (ft)	+E/-W (ft)	Vertical Section (ft)	Dogleg Rate (°/100ft)	Build Rate (°/100ft)	Turn Rate (°/100ft)
0.0	0.00	0.00	0.0	0.0	0.0	0.0	0.00	0.00	0.00
40.0	0.00	0.00	40.0	0.0	0.0	0.0	0.00	0.00	0.00
80.0	0.00	0.00	80.0	0.0	0.0	0.0	0.00	0.00	0.00
120.0	0.00	0.00	120.0	0.0	0.0	0.0	0.00	0.00	0.00
160.0	0.00	0.00	160.0	0.0	0.0	0.0	0.00	0.00	0.00
200.0	0.00	0.00	200.0	0.0	0.0	0.0	0.00	0.00	0.00
240.0	0.80	185.54	240.0	-0.3	0.0	0.3	2.00	2.00	0.00
280.0	1.60	185.54	280.0	-1.1	-0.1	1.1	2.00	2.00	0.00
320.0	2.40	185.54	320.0	-2.5	-0.2	2.5	2.00	2.00	0.00
360.0	3.20	185.54	359.9	-4.4	-0.4	4.5	2.00	2.00	0.00
400.0	4.00	185.54	399.8	-6.9	-0.7	7.0	2.00	2.00	0.00
440.0	4.80	185.54	439.7	-10.0	-1.0	10.0	2.00	2.00	0.00
480.0	5.60	185.54	479.6	-13.6	-1.3	13.7	2.00	2.00	0.00
520.0	6.40	185.54	519.3	-17.8	-1.7	17.9	2.00	2.00	0.00
560.0	7.20	185.54	559.1	-22.5	-2.2	22.6	2.00	2.00	0.00
600.0	8.00	185.54	598.7	-27.7	-2.7	27.9	2.00	2.00	0.00
640.0	8.80	185.54	638.3	-33.6	-3.3	33.7	2.00	2.00	0.00
680.0	9.60	185.54	677.8	-39.9	-3.9	40.1	2.00	2.00	0.00
720.0	10.40	185.54	717.1	-46.8	-4.5	47.1	2.00	2.00	0.00
760.0	11.20	185.54	756.4	-54.3	-5.3	54.6	2.00	2.00	0.00
773.8	11.48	185.54	770.0	-57.0	-5.5	57.3	2.00	2.00	0.00
8 5/8"									
800.0	12.00	185.54	795.6	-62.3	-6.0	62.6	2.00	2.00	0.00
840.0	12.80	185.54	834.7	-70.9	-6.9	71.2	2.00	2.00	0.00
863.4	13.27	185.54	857.5	-76.1	-7.4	76.5	2.00	2.00	0.00
880.0	13.27	185.54	873.6	-79.9	-7.8	80.3	0.00	0.00	0.00
920.0	13.27	185.54	912.6	-89.0	-8.6	89.5	0.00	0.00	0.00
960.0	13.27	185.54	951.5	-98.2	-9.5	98.6	0.00	0.00	0.00
1,000.0	13.27	185.54	990.4	-107.3	-10.4	107.8	0.00	0.00	0.00
1,040.0	13.27	185.54	1,029.4	-116.5	-11.3	117.0	0.00	0.00	0.00
1,080.0	13.27	185.54	1,068.3	-125.6	-12.2	126.2	0.00	0.00	0.00
1,120.0	13.27	185.54	1,107.2	-134.7	-13.1	135.4	0.00	0.00	0.00
1,160.0	13.27	185.54	1,146.2	-143.9	-14.0	144.5	0.00	0.00	0.00
1,200.0	13.27	185.54	1,185.1	-153.0	-14.8	153.7	0.00	0.00	0.00
1,240.0	13.27	185.54	1,224.0	-162.1	-15.7	162.9	0.00	0.00	0.00
1,280.0	13.27	185.54	1,263.0	-171.3	-16.6	172.1	0.00	0.00	0.00
1,320.0	13.27	185.54	1,301.9	-180.4	-17.5	181.3	0.00	0.00	0.00
1,360.0	13.27	185.54	1,340.8	-189.6	-18.4	190.4	0.00	0.00	0.00
1,400.0	13.27	185.54	1,379.8	-198.7	-19.3	199.6	0.00	0.00	0.00
1,440.0	13.27	185.54	1,418.7	-207.8	-20.2	208.8	0.00	0.00	0.00
1,480.0	13.27	185.54	1,457.6	-217.0	-21.0	218.0	0.00	0.00	0.00
1,520.0	13.27	185.54	1,496.6	-226.1	-21.9	227.2	0.00	0.00	0.00
1,560.0	13.27	185.54	1,535.5	-235.2	-22.8	236.4	0.00	0.00	0.00
1,600.0	13.27	185.54	1,574.4	-244.4	-23.7	245.5	0.00	0.00	0.00
1,640.0	13.27	185.54	1,613.4	-253.5	-24.6	254.7	0.00	0.00	0.00
1,680.0	13.27	185.54	1,652.3	-262.7	-25.5	263.9	0.00	0.00	0.00
1,720.0	13.27	185.54	1,691.2	-271.8	-26.4	273.1	0.00	0.00	0.00
1,760.0	13.27	185.54	1,730.2	-280.9	-27.2	282.3	0.00	0.00	0.00
1,800.0	13.27	185.54	1,769.1	-290.1	-28.1	291.4	0.00	0.00	0.00
1,840.0	13.27	185.54	1,808.0	-299.2	-29.0	300.6	0.00	0.00	0.00
1,880.0	13.27	185.54	1,846.9	-308.3	-29.9	309.8	0.00	0.00	0.00
1,920.0	13.27	185.54	1,885.9	-317.5	-30.8	319.0	0.00	0.00	0.00
1,960.0	13.27	185.54	1,924.8	-326.6	-31.7	328.2	0.00	0.00	0.00
2,000.0	13.27	185.54	1,963.7	-335.8	-32.6	337.3	0.00	0.00	0.00

Database:	Landmark	Local Co-ordinate Reference:	Well Blehm 16-19
Company:	Bayswater Exploration & Production, LLC	TVD Reference:	WELL @ 4994.0ft (Original Well Elev)
Project:	SEC.19-T7N-R67W	MD Reference:	WELL @ 4994.0ft (Original Well Elev)
Site:	Blehm 19-L Pad Sec.19-T7N-R67W	North Reference:	True
Well:	Blehm 16-19	Survey Calculation Method:	Minimum Curvature
Wellbore:	Wellbore #1		
Design:	Plan #1 (5-20-13)		

Planned Survey									
Measured Depth (ft)	Inclination (°)	Azimuth (°)	Vertical Depth (ft)	+N/-S (ft)	+E/-W (ft)	Vertical Section (ft)	Dogleg Rate (°/100ft)	Build Rate (°/100ft)	Turn Rate (°/100ft)
2,040.0	13.27	185.54	2,002.7	-344.9	-33.5	346.5	0.00	0.00	0.00
2,080.0	13.27	185.54	2,041.6	-354.0	-34.3	355.7	0.00	0.00	0.00
2,120.0	13.27	185.54	2,080.5	-363.2	-35.2	364.9	0.00	0.00	0.00
2,160.0	13.27	185.54	2,119.5	-372.3	-36.1	374.1	0.00	0.00	0.00
2,200.0	13.27	185.54	2,158.4	-381.5	-37.0	383.2	0.00	0.00	0.00
2,240.0	13.27	185.54	2,197.3	-390.6	-37.9	392.4	0.00	0.00	0.00
2,280.0	13.27	185.54	2,236.3	-399.7	-38.8	401.6	0.00	0.00	0.00
2,320.0	13.27	185.54	2,275.2	-408.9	-39.7	410.8	0.00	0.00	0.00
2,360.0	13.27	185.54	2,314.1	-418.0	-40.5	420.0	0.00	0.00	0.00
2,400.0	13.27	185.54	2,353.1	-427.1	-41.4	429.1	0.00	0.00	0.00
2,440.0	13.27	185.54	2,392.0	-436.3	-42.3	438.3	0.00	0.00	0.00
2,480.0	13.27	185.54	2,430.9	-445.4	-43.2	447.5	0.00	0.00	0.00
2,520.0	13.27	185.54	2,469.9	-454.6	-44.1	456.7	0.00	0.00	0.00
2,560.0	13.27	185.54	2,508.8	-463.7	-45.0	465.9	0.00	0.00	0.00
2,600.0	13.27	185.54	2,547.7	-472.8	-45.9	475.0	0.00	0.00	0.00
2,640.0	13.27	185.54	2,586.7	-482.0	-46.7	484.2	0.00	0.00	0.00
2,680.0	13.27	185.54	2,625.6	-491.1	-47.6	493.4	0.00	0.00	0.00
2,720.0	13.27	185.54	2,664.5	-500.2	-48.5	502.6	0.00	0.00	0.00
2,760.0	13.27	185.54	2,703.5	-509.4	-49.4	511.8	0.00	0.00	0.00
2,800.0	13.27	185.54	2,742.4	-518.5	-50.3	521.0	0.00	0.00	0.00
2,840.0	13.27	185.54	2,781.3	-527.7	-51.2	530.1	0.00	0.00	0.00
2,880.0	13.27	185.54	2,820.3	-536.8	-52.1	539.3	0.00	0.00	0.00
2,920.0	13.27	185.54	2,859.2	-545.9	-53.0	548.5	0.00	0.00	0.00
2,960.0	13.27	185.54	2,898.1	-555.1	-53.8	557.7	0.00	0.00	0.00
3,000.0	13.27	185.54	2,937.0	-564.2	-54.7	566.9	0.00	0.00	0.00
3,040.0	13.27	185.54	2,976.0	-573.3	-55.6	576.0	0.00	0.00	0.00
3,080.0	13.27	185.54	3,014.9	-582.5	-56.5	585.2	0.00	0.00	0.00
3,120.0	13.27	185.54	3,053.8	-591.6	-57.4	594.4	0.00	0.00	0.00
3,160.0	13.27	185.54	3,092.8	-600.8	-58.3	603.6	0.00	0.00	0.00
3,200.0	13.27	185.54	3,131.7	-609.9	-59.2	612.8	0.00	0.00	0.00
3,240.0	13.27	185.54	3,170.6	-619.0	-60.0	621.9	0.00	0.00	0.00
3,280.0	13.27	185.54	3,209.6	-628.2	-60.9	631.1	0.00	0.00	0.00
3,285.6	13.27	185.54	3,215.0	-629.4	-61.1	632.4	0.00	0.00	0.00
PARKMAN									
3,320.0	13.27	185.54	3,248.5	-637.3	-61.8	640.3	0.00	0.00	0.00
3,360.0	13.27	185.54	3,287.4	-646.4	-62.7	649.5	0.00	0.00	0.00
3,400.0	13.27	185.54	3,326.4	-655.6	-63.6	658.7	0.00	0.00	0.00
3,440.0	13.27	185.54	3,365.3	-664.7	-64.5	667.8	0.00	0.00	0.00
3,480.0	13.27	185.54	3,404.2	-673.9	-65.4	677.0	0.00	0.00	0.00
3,520.0	13.27	185.54	3,443.2	-683.0	-66.2	686.2	0.00	0.00	0.00
3,560.0	13.27	185.54	3,482.1	-692.1	-67.1	695.4	0.00	0.00	0.00
3,600.0	13.27	185.54	3,521.0	-701.3	-68.0	704.6	0.00	0.00	0.00
3,640.0	13.27	185.54	3,560.0	-710.4	-68.9	713.7	0.00	0.00	0.00
3,680.0	13.27	185.54	3,598.9	-719.5	-69.8	722.9	0.00	0.00	0.00
3,720.0	13.27	185.54	3,637.8	-728.7	-70.7	732.1	0.00	0.00	0.00
3,760.0	13.27	185.54	3,676.8	-737.8	-71.6	741.3	0.00	0.00	0.00
3,800.0	13.27	185.54	3,715.7	-747.0	-72.5	750.5	0.00	0.00	0.00
3,840.0	13.27	185.54	3,754.6	-756.1	-73.3	759.6	0.00	0.00	0.00
3,880.0	13.27	185.54	3,793.6	-765.2	-74.2	768.8	0.00	0.00	0.00
3,920.0	13.27	185.54	3,832.5	-774.4	-75.1	778.0	0.00	0.00	0.00
3,960.0	13.27	185.54	3,871.4	-783.5	-76.0	787.2	0.00	0.00	0.00
4,000.0	13.27	185.54	3,910.4	-792.6	-76.9	796.4	0.00	0.00	0.00
4,040.0	13.27	185.54	3,949.3	-801.8	-77.8	805.6	0.00	0.00	0.00

Database:	Landmark	Local Co-ordinate Reference:	Well Blehm 16-19
Company:	Bayswater Exploration & Production, LLC	TVD Reference:	WELL @ 4994.0ft (Original Well Elev)
Project:	SEC.19-T7N-R67W	MD Reference:	WELL @ 4994.0ft (Original Well Elev)
Site:	Blehm 19-L Pad Sec.19-T7N-R67W	North Reference:	True
Well:	Blehm 16-19	Survey Calculation Method:	Minimum Curvature
Wellbore:	Wellbore #1		
Design:	Plan #1 (5-20-13)		

Planned Survey									
Measured Depth (ft)	Inclination (°)	Azimuth (°)	Vertical Depth (ft)	+N/-S (ft)	+E/-W (ft)	Vertical Section (ft)	Dogleg Rate (°/100ft)	Build Rate (°/100ft)	Turn Rate (°/100ft)
4,080.0	13.27	185.54	3,988.2	-810.9	-78.7	814.7	0.00	0.00	0.00
4,092.1	13.27	185.54	4,000.0	-813.7	-78.9	817.5	0.00	0.00	0.00
SUSSEX									
4,120.0	13.27	185.54	4,027.2	-820.1	-79.5	823.9	0.00	0.00	0.00
4,160.0	13.27	185.54	4,066.1	-829.2	-80.4	833.1	0.00	0.00	0.00
4,200.0	13.27	185.54	4,105.0	-838.3	-81.3	842.3	0.00	0.00	0.00
4,240.0	13.27	185.54	4,143.9	-847.5	-82.2	851.5	0.00	0.00	0.00
4,280.0	13.27	185.54	4,182.9	-856.6	-83.1	860.6	0.00	0.00	0.00
4,320.0	13.27	185.54	4,221.8	-865.8	-84.0	869.8	0.00	0.00	0.00
4,360.0	13.27	185.54	4,260.7	-874.9	-84.9	879.0	0.00	0.00	0.00
4,400.0	13.27	185.54	4,299.7	-884.0	-85.7	888.2	0.00	0.00	0.00
4,436.3	13.27	185.54	4,335.0	-892.3	-86.6	896.5	0.00	0.00	0.00
SHANNON									
4,440.0	13.27	185.54	4,338.6	-893.2	-86.6	897.4	0.00	0.00	0.00
4,480.0	13.27	185.54	4,377.5	-902.3	-87.5	906.5	0.00	0.00	0.00
4,520.0	13.27	185.54	4,416.5	-911.4	-88.4	915.7	0.00	0.00	0.00
4,560.0	13.27	185.54	4,455.4	-920.6	-89.3	924.9	0.00	0.00	0.00
4,600.0	13.27	185.54	4,494.3	-929.7	-90.2	934.1	0.00	0.00	0.00
4,640.0	13.27	185.54	4,533.3	-938.9	-91.1	943.3	0.00	0.00	0.00
4,680.0	13.27	185.54	4,572.2	-948.0	-92.0	952.4	0.00	0.00	0.00
4,720.0	13.27	185.54	4,611.1	-957.1	-92.8	961.6	0.00	0.00	0.00
4,760.0	13.27	185.54	4,650.1	-966.3	-93.7	970.8	0.00	0.00	0.00
4,800.0	13.27	185.54	4,689.0	-975.4	-94.6	980.0	0.00	0.00	0.00
4,840.0	13.27	185.54	4,727.9	-984.5	-95.5	989.2	0.00	0.00	0.00
4,880.0	13.27	185.54	4,766.9	-993.7	-96.4	998.3	0.00	0.00	0.00
4,920.0	13.27	185.54	4,805.8	-1,002.8	-97.3	1,007.5	0.00	0.00	0.00
4,960.0	13.27	185.54	4,844.7	-1,012.0	-98.2	1,016.7	0.00	0.00	0.00
5,000.0	13.27	185.54	4,883.7	-1,021.1	-99.0	1,025.9	0.00	0.00	0.00
5,040.0	13.27	185.54	4,922.6	-1,030.2	-99.9	1,035.1	0.00	0.00	0.00
5,080.0	13.27	185.54	4,961.5	-1,039.4	-100.8	1,044.2	0.00	0.00	0.00
5,120.0	13.27	185.54	5,000.5	-1,048.5	-101.7	1,053.4	0.00	0.00	0.00
5,160.0	13.27	185.54	5,039.4	-1,057.6	-102.6	1,062.6	0.00	0.00	0.00
5,163.2	13.27	185.54	5,042.5	-1,058.4	-102.7	1,063.3	0.00	0.00	0.00
5,200.0	12.53	185.54	5,078.4	-1,066.6	-103.5	1,071.6	2.00	-2.00	0.00
5,240.0	11.73	185.54	5,117.5	-1,074.9	-104.3	1,080.0	2.00	-2.00	0.00
5,280.0	10.93	185.54	5,156.7	-1,082.7	-105.0	1,087.8	2.00	-2.00	0.00
5,320.0	10.13	185.54	5,196.0	-1,090.0	-105.7	1,095.1	2.00	-2.00	0.00
5,360.0	9.33	185.54	5,235.4	-1,096.8	-106.4	1,101.9	2.00	-2.00	0.00
5,400.0	8.53	185.54	5,275.0	-1,102.9	-107.0	1,108.1	2.00	-2.00	0.00
5,440.0	7.73	185.54	5,314.6	-1,108.6	-107.5	1,113.8	2.00	-2.00	0.00
5,480.0	6.93	185.54	5,354.2	-1,113.6	-108.0	1,118.9	2.00	-2.00	0.00
5,520.0	6.13	185.54	5,394.0	-1,118.2	-108.5	1,123.4	2.00	-2.00	0.00
5,560.0	5.33	185.54	5,433.8	-1,122.2	-108.8	1,127.4	2.00	-2.00	0.00
5,600.0	4.53	185.54	5,473.6	-1,125.6	-109.2	1,130.9	2.00	-2.00	0.00
5,640.0	3.73	185.54	5,513.5	-1,128.4	-109.5	1,133.7	2.00	-2.00	0.00
5,680.0	2.93	185.54	5,553.5	-1,130.8	-109.7	1,136.1	2.00	-2.00	0.00
5,720.0	2.13	185.54	5,593.4	-1,132.5	-109.9	1,137.8	2.00	-2.00	0.00
5,760.0	1.33	185.54	5,633.4	-1,133.7	-110.0	1,139.0	2.00	-2.00	0.00
5,800.0	0.53	185.54	5,673.4	-1,134.4	-110.0	1,139.7	2.00	-2.00	0.00
5,826.6	0.00	0.00	5,700.0	-1,134.5	-110.0	1,139.8	2.00	-2.00	655.60
TARGET BHL 660'FSL, 604'FEL									
5,840.0	0.00	0.00	5,713.4	-1,134.5	-110.0	1,139.8	0.00	0.00	0.00
5,880.0	0.00	0.00	5,753.4	-1,134.5	-110.0	1,139.8	0.00	0.00	0.00

Database:	Landmark	Local Co-ordinate Reference:	Well Blehm 16-19
Company:	Bayswater Exploration & Production, LLC	TVD Reference:	WELL @ 4994.0ft (Original Well Elev)
Project:	SEC.19-T7N-R67W	MD Reference:	WELL @ 4994.0ft (Original Well Elev)
Site:	Blehm 19-L Pad Sec.19-T7N-R67W	North Reference:	True
Well:	Blehm 16-19	Survey Calculation Method:	Minimum Curvature
Wellbore:	Wellbore #1		
Design:	Plan #1 (5-20-13)		

Planned Survey									
Measured Depth (ft)	Inclination (°)	Azimuth (°)	Vertical Depth (ft)	+N/-S (ft)	+E/-W (ft)	Vertical Section (ft)	Dogleg Rate (°/100ft)	Build Rate (°/100ft)	Turn Rate (°/100ft)
5,920.0	0.00	0.00	5,793.4	-1,134.5	-110.0	1,139.8	0.00	0.00	0.00
5,960.0	0.00	0.00	5,833.4	-1,134.5	-110.0	1,139.8	0.00	0.00	0.00
6,000.0	0.00	0.00	5,873.4	-1,134.5	-110.0	1,139.8	0.00	0.00	0.00
6,040.0	0.00	0.00	5,913.4	-1,134.5	-110.0	1,139.8	0.00	0.00	0.00
6,080.0	0.00	0.00	5,953.4	-1,134.5	-110.0	1,139.8	0.00	0.00	0.00
6,120.0	0.00	0.00	5,993.4	-1,134.5	-110.0	1,139.8	0.00	0.00	0.00
6,160.0	0.00	0.00	6,033.4	-1,134.5	-110.0	1,139.8	0.00	0.00	0.00
6,200.0	0.00	0.00	6,073.4	-1,134.5	-110.0	1,139.8	0.00	0.00	0.00
6,240.0	0.00	0.00	6,113.4	-1,134.5	-110.0	1,139.8	0.00	0.00	0.00
6,280.0	0.00	0.00	6,153.4	-1,134.5	-110.0	1,139.8	0.00	0.00	0.00
6,320.0	0.00	0.00	6,193.4	-1,134.5	-110.0	1,139.8	0.00	0.00	0.00
6,360.0	0.00	0.00	6,233.4	-1,134.5	-110.0	1,139.8	0.00	0.00	0.00
6,400.0	0.00	0.00	6,273.4	-1,134.5	-110.0	1,139.8	0.00	0.00	0.00
6,440.0	0.00	0.00	6,313.4	-1,134.5	-110.0	1,139.8	0.00	0.00	0.00
6,480.0	0.00	0.00	6,353.4	-1,134.5	-110.0	1,139.8	0.00	0.00	0.00
6,520.0	0.00	0.00	6,393.4	-1,134.5	-110.0	1,139.8	0.00	0.00	0.00
6,560.0	0.00	0.00	6,433.4	-1,134.5	-110.0	1,139.8	0.00	0.00	0.00
6,600.0	0.00	0.00	6,473.4	-1,134.5	-110.0	1,139.8	0.00	0.00	0.00
6,640.0	0.00	0.00	6,513.4	-1,134.5	-110.0	1,139.8	0.00	0.00	0.00
6,680.0	0.00	0.00	6,553.4	-1,134.5	-110.0	1,139.8	0.00	0.00	0.00
6,720.0	0.00	0.00	6,593.4	-1,134.5	-110.0	1,139.8	0.00	0.00	0.00
6,760.0	0.00	0.00	6,633.4	-1,134.5	-110.0	1,139.8	0.00	0.00	0.00
6,791.6	0.00	0.00	6,665.0	-1,134.5	-110.0	1,139.8	0.00	0.00	0.00
NIOBRARA - TARGET CIRCLE 660'FSL, 604'FEL - LEGAL BOX 400' X 400' 661'FSL & 605'FEL									
6,800.0	0.00	0.00	6,673.4	-1,134.5	-110.0	1,139.8	0.00	0.00	0.00
6,840.0	0.00	0.00	6,713.4	-1,134.5	-110.0	1,139.8	0.00	0.00	0.00
6,880.0	0.00	0.00	6,753.4	-1,134.5	-110.0	1,139.8	0.00	0.00	0.00
6,920.0	0.00	0.00	6,793.4	-1,134.5	-110.0	1,139.8	0.00	0.00	0.00
6,960.0	0.00	0.00	6,833.4	-1,134.5	-110.0	1,139.8	0.00	0.00	0.00
7,000.0	0.00	0.00	6,873.4	-1,134.5	-110.0	1,139.8	0.00	0.00	0.00
7,040.0	0.00	0.00	6,913.4	-1,134.5	-110.0	1,139.8	0.00	0.00	0.00
7,047.6	0.00	0.00	6,921.0	-1,134.5	-110.0	1,139.8	0.00	0.00	0.00
FORT HAYS									
7,080.0	0.00	0.00	6,953.4	-1,134.5	-110.0	1,139.8	0.00	0.00	0.00
7,095.6	0.00	0.00	6,969.0	-1,134.5	-110.0	1,139.8	0.00	0.00	0.00
CODELL									
7,120.0	0.00	0.00	6,993.4	-1,134.5	-110.0	1,139.8	0.00	0.00	0.00
7,155.6	0.00	0.00	7,029.0	-1,134.5	-110.0	1,139.8	0.00	0.00	0.00
GREENHORN									
7,160.0	0.00	0.00	7,033.4	-1,134.5	-110.0	1,139.8	0.00	0.00	0.00
7,200.0	0.00	0.00	7,073.4	-1,134.5	-110.0	1,139.8	0.00	0.00	0.00
7,221.6	0.00	0.00	7,095.0	-1,134.5	-110.0	1,139.8	0.00	0.00	0.00
GRANEROS									
7,240.0	0.00	0.00	7,113.4	-1,134.5	-110.0	1,139.8	0.00	0.00	0.00
7,241.6	0.00	0.00	7,115.0	-1,134.5	-110.0	1,139.8	0.00	0.00	0.00

Database:	Landmark	Local Co-ordinate Reference:	Well Blehm 16-19
Company:	Bayswater Exploration & Production, LLC	TVD Reference:	WELL @ 4994.0ft (Original Well Elev)
Project:	SEC.19-T7N-R67W	MD Reference:	WELL @ 4994.0ft (Original Well Elev)
Site:	Blehm 19-L Pad Sec.19-T7N-R67W	North Reference:	True
Well:	Blehm 16-19	Survey Calculation Method:	Minimum Curvature
Wellbore:	Wellbore #1		
Design:	Plan #1 (5-20-13)		

Targets									
Target Name									
- hit/miss target	Dip Angle	Dip Dir.	TVD	+N-S	+E-W	Northing	Easting	Latitude	Longitude
- Shape	(°)	(°)	(ft)	(ft)	(ft)	(ft)	(ft)		
TARGET CIRCLE 660' - plan hits target center - Circle (radius 75.0)	0.00	0.00	6,665.0	-1,134.5	-110.0	1,445,284.24	3,158,647.73	40.554303	-104.929067
TARGET BHL 660'FS - plan hits target center - Point	0.00	0.00	5,700.0	-1,134.5	-110.0	1,445,284.24	3,158,647.73	40.554303	-104.929067
LEGAL BOX 400' X 400' - plan misses target center by 1.4ft at 6791.6ft MD (6665.0 TVD, -1134.5 N, -110.0 E) - Rectangle (sides W400.0 H400.0 D450.0)	0.00	0.00	6,665.0	-1,133.5	-111.0	1,445,285.22	3,158,646.77	40.554306	-104.929070

Casing Points					
Measured Depth (ft)	Vertical Depth (ft)	Name	Casing Diameter (")	Hole Diameter (")	
773.8	770.0	8 5/8"	8-5/8	12-1/4	

Formations						
Measured Depth (ft)	Vertical Depth (ft)	Name	Lithology	Dip (°)	Dip Direction (°)	
3,285.6	3,215.0	PARKMAN				
4,092.1	4,000.0	SUSSEX				
4,436.3	4,335.0	SHANNON				
6,791.6	6,665.0	NIOBRARA				
7,047.6	6,921.0	FORT HAYS				
7,095.6	6,969.0	CODELL				
7,155.6	7,029.0	GREENHORN				
7,221.6	7,095.0	GRANEROS				



Directional

Bayswater Exploration & Production, LLC

SEC.19-T7N-R67W

Blehm 19-L Pad Sec.19-T7N-R67W

Blehm 16-19

Wellbore #1

Plan #1 (5-20-13)

Anticollision Report

24 May, 2013



Directional

Company:	Bayswater Exploration & Production, LLC	Local Co-ordinate Reference:	Well Blehm 16-19
Project:	SEC.19-T7N-R67W	TVD Reference:	WELL @ 4994.0ft (Original Well Elev)
Reference Site:	Blehm 19-L Pad Sec.19-T7N-R67W	MD Reference:	WELL @ 4994.0ft (Original Well Elev)
Site Error:	0.0ft	North Reference:	True
Reference Well:	Blehm 16-19	Survey Calculation Method:	Minimum Curvature
Well Error:	0.0ft	Output errors are at	2.00 sigma
Reference Wellbore	Wellbore #1	Database:	Landmark
Reference Design:	Plan #1 (5-20-13)	Offset TVD Reference:	Offset Datum

Reference	Plan #1 (5-20-13)		
Filter type:	NO GLOBAL FILTER: Using user defined selection & filtering criteria		
Interpolation Method:	Stations	Error Model:	ISCWSA
Depth Range:	Unlimited	Scan Method:	Closest Approach 3D
Results Limited by:	Maximum center-center distance of 10,000.0ft	Error Surface:	Elliptical Conic
Warning Levels Evaluated at:	2.00 Sigma		

Survey Tool Program	Date 5/24/2013			
From (ft)	To (ft)	Survey (Wellbore)	Tool Name	Description
0.0	7,241.6	Plan #1 (5-20-13) (Wellbore #1)	MWD	MWD - Standard

Summary						
Site Name	Reference Measured Depth (ft)	Offset Measured Depth (ft)	Distance Between Centres (ft)	Distance Between Ellipses (ft)	Separation Factor	Warning
Offset Well - Wellbore - Design						
Blehm 19-L Pad Sec.19-T7N-R67W						
Blehm 9-19 (Vert.) - Wellbore #1 - Plan #1 (5-20-13)	311.7	311.7	14.9	13.7	12.921	CC, ES
Blehm 9-19 (Vert.) - Wellbore #1 - Plan #1 (5-20-13)	500.0	499.5	20.1	18.1	10.070	SF

Offset Design Blehm 19-L Pad Sec.19-T7N-R67W - Blehm 9-19 (Vert.) - Wellbore #1 - Plan #1 (5-20-13)												
Survey Program: 0-MWD												
Reference		Offset		Semi Major Axis		Distance						
Measured Depth (ft)	Vertical Depth (ft)	Measured Depth (ft)	Vertical Depth (ft)	Reference (ft)	Offset (ft)	Highside Toolface (°)	Offset Wellbore Centre +N/-S (ft)	+E/-W (ft)	Between Centres (ft)	Between Ellipses (ft)	Minimum Separation (ft)	Separation Factor
0.0	0.0	0.0	0.0	0.0	0.0	-92.80	-0.7	-15.0	15.0	15.0	0.00	N/A
100.0	100.0	100.0	100.0	0.1	0.1	-92.80	-0.7	-15.0	15.0	14.8	0.22	66.838
200.0	200.0	200.0	200.0	0.3	0.3	-92.80	-0.7	-15.0	15.0	14.3	0.67	22.279
300.0	300.0	300.0	300.0	0.5	0.6	88.33	-0.7	-15.0	14.9	13.8	1.10	13.521
311.7	311.7	311.7	311.7	0.6	0.6	90.00	-0.7	-15.0	14.9	13.7	1.15	12.921 CC, ES
400.0	399.8	399.8	399.8	0.8	0.8	107.86	-0.7	-15.0	15.6	14.1	1.53	10.193
500.0	499.5	499.5	499.5	1.0	1.0	132.12	-0.7	-15.0	20.1	18.1	2.00	10.070 SF
600.0	598.7	598.7	598.7	1.3	1.2	149.71	-0.7	-15.0	29.7	27.2	2.46	12.069
700.0	697.5	697.5	697.5	1.6	1.5	159.94	-0.7	-15.0	43.9	41.0	2.92	15.044
800.0	795.6	795.6	795.6	2.0	1.7	165.88	-0.7	-15.0	62.2	58.8	3.38	18.405
863.4	857.5	857.5	857.5	2.3	1.8	168.38	-0.7	-15.0	75.8	72.1	3.67	20.624
900.0	893.1	893.1	893.1	2.4	1.9	169.54	-0.7	-15.0	84.0	80.2	3.84	21.866
1,000.0	990.4	990.4	990.4	2.9	2.1	171.77	-0.7	-15.0	106.7	102.4	4.31	24.765
1,100.0	1,087.8	1,087.8	1,087.8	3.4	2.3	173.23	-0.7	-15.0	129.5	124.7	4.78	27.092
1,200.0	1,185.1	1,185.1	1,185.1	3.9	2.6	174.25	-0.7	-15.0	152.3	147.0	5.25	28.990
1,300.0	1,282.4	1,282.4	1,282.4	4.3	2.8	175.00	-0.7	-15.0	175.1	169.4	5.73	30.564
1,400.0	1,379.8	1,379.8	1,379.8	4.8	3.0	175.58	-0.7	-15.0	198.0	191.8	6.21	31.889
1,500.0	1,477.1	1,477.1	1,477.1	5.3	3.2	176.04	-0.7	-15.0	220.9	214.2	6.69	33.017
1,600.0	1,574.4	1,574.4	1,574.4	5.8	3.4	176.41	-0.7	-15.0	243.8	236.6	7.17	33.989
1,700.0	1,671.8	1,671.8	1,671.8	6.3	3.6	176.72	-0.7	-15.0	266.7	259.1	7.66	34.834
1,800.0	1,769.1	1,769.1	1,769.1	6.8	3.9	176.98	-0.7	-15.0	289.6	281.5	8.14	35.575
1,900.0	1,866.4	1,866.4	1,866.4	7.3	4.1	177.20	-0.7	-15.0	312.6	303.9	8.63	36.231
2,000.0	1,963.7	1,963.7	1,963.7	7.8	4.3	177.39	-0.7	-15.0	335.5	326.4	9.11	36.814
2,100.0	2,061.1	2,061.1	2,061.1	8.2	4.5	177.56	-0.7	-15.0	358.4	348.8	9.60	37.336
2,200.0	2,158.4	2,158.4	2,158.4	8.7	4.7	177.70	-0.7	-15.0	381.4	371.3	10.09	37.807

CC - Min centre to center distance or convergent point, SF - min separation factor, ES - min ellipse separation

Company:	Bayswater Exploration & Production, LLC	Local Co-ordinate Reference:	Well Blehm 16-19
Project:	SEC.19-T7N-R67W	TVD Reference:	WELL @ 4994.0ft (Original Well Elev)
Reference Site:	Blehm 19-L Pad Sec.19-T7N-R67W	MD Reference:	WELL @ 4994.0ft (Original Well Elev)
Site Error:	0.0ft	North Reference:	True
Reference Well:	Blehm 16-19	Survey Calculation Method:	Minimum Curvature
Well Error:	0.0ft	Output errors are at	2.00 sigma
Reference Wellbore	Wellbore #1	Database:	Landmark
Reference Design:	Plan #1 (5-20-13)	Offset TVD Reference:	Offset Datum

Offset Design													Offset Site Error:	0.0 ft
Survey Program: 0-MWD													Offset Well Error:	0.0 ft
Reference		Offset		Semi Major Axis			Distance							Warning
Measured Depth (ft)	Vertical Depth (ft)	Measured Depth (ft)	Vertical Depth (ft)	Reference (ft)	Offset (ft)	Highside Toolface (°)	Offset Wellbore Centre +N/-S (ft)	+E/-W (ft)	Between Centres (ft)	Between Ellipses (ft)	Minimum Separation (ft)	Separation Factor		
2,300.0	2,255.7	2,255.7	2,255.7	9.2	5.0	177.84	-0.7	-15.0	404.3	393.7	10.57	38.233		
2,400.0	2,353.1	2,353.1	2,353.1	9.7	5.2	177.95	-0.7	-15.0	427.2	416.2	11.06	38.620		
2,500.0	2,450.4	2,450.4	2,450.4	10.2	5.4	178.06	-0.7	-15.0	450.2	438.6	11.55	38.973		
2,600.0	2,547.7	2,547.7	2,547.7	10.7	5.6	178.15	-0.7	-15.0	473.1	461.1	12.04	39.297		
2,700.0	2,645.1	2,645.1	2,645.1	11.2	5.8	178.24	-0.7	-15.0	496.0	483.5	12.53	39.595		
2,800.0	2,742.4	2,742.4	2,742.4	11.7	6.1	178.31	-0.7	-15.0	519.0	506.0	13.02	39.870		
2,900.0	2,839.7	2,839.7	2,839.7	12.2	6.3	178.39	-0.7	-15.0	541.9	528.4	13.51	40.124		
3,000.0	2,937.0	2,937.0	2,937.0	12.7	6.5	178.45	-0.7	-15.0	564.9	550.9	14.00	40.361		
3,100.0	3,034.4	3,034.4	3,034.4	13.2	6.7	178.51	-0.7	-15.0	587.8	573.3	14.49	40.580		
3,200.0	3,131.7	3,131.7	3,131.7	13.7	6.9	178.57	-0.7	-15.0	610.8	595.8	14.98	40.785		
3,300.0	3,229.0	3,229.0	3,229.0	14.2	7.1	178.62	-0.7	-15.0	633.7	618.2	15.46	40.977		
3,400.0	3,326.4	3,326.4	3,326.4	14.7	7.4	178.67	-0.7	-15.0	656.7	640.7	15.96	41.156		
3,500.0	3,423.7	3,423.7	3,423.7	15.1	7.6	178.71	-0.7	-15.0	679.6	663.2	16.45	41.325		
3,600.0	3,521.0	3,521.0	3,521.0	15.6	7.8	178.75	-0.7	-15.0	702.5	685.6	16.94	41.483		
3,700.0	3,618.4	3,618.4	3,618.4	16.1	8.0	178.79	-0.7	-15.0	725.5	708.1	17.43	41.632		
3,800.0	3,715.7	3,715.7	3,715.7	16.6	8.2	178.83	-0.7	-15.0	748.4	730.5	17.92	41.773		
3,900.0	3,813.0	3,813.0	3,813.0	17.1	8.5	178.87	-0.7	-15.0	771.4	753.0	18.41	41.906		
4,000.0	3,910.4	3,910.4	3,910.4	17.6	8.7	178.90	-0.7	-15.0	794.3	775.4	18.90	42.032		
4,100.0	4,007.7	4,007.7	4,007.7	18.1	8.9	178.93	-0.7	-15.0	817.3	797.9	19.39	42.151		
4,200.0	4,105.0	4,105.0	4,105.0	18.6	9.1	178.96	-0.7	-15.0	840.2	820.3	19.88	42.264		
4,300.0	4,202.3	4,202.3	4,202.3	19.1	9.3	178.99	-0.7	-15.0	863.2	842.8	20.37	42.372		
4,400.0	4,299.7	4,299.7	4,299.7	19.6	9.6	179.01	-0.7	-15.0	886.1	865.3	20.86	42.474		
4,500.0	4,397.0	4,397.0	4,397.0	20.1	9.8	179.04	-0.7	-15.0	909.1	887.7	21.35	42.572		
4,600.0	4,494.3	4,494.3	4,494.3	20.6	10.0	179.06	-0.7	-15.0	932.0	910.2	21.85	42.664		
4,700.0	4,591.7	4,591.7	4,591.7	21.1	10.2	179.08	-0.7	-15.0	955.0	932.6	22.34	42.753		
4,800.0	4,689.0	4,689.0	4,689.0	21.6	10.4	179.11	-0.7	-15.0	977.9	955.1	22.83	42.838		
4,900.0	4,786.3	4,786.3	4,786.3	22.1	10.6	179.13	-0.7	-15.0	1,000.9	977.5	23.32	42.918		
5,000.0	4,883.7	4,883.7	4,883.7	22.6	10.9	179.15	-0.7	-15.0	1,023.8	1,000.0	23.81	42.996		
5,100.0	4,981.0	4,981.0	4,981.0	23.0	11.1	179.16	-0.7	-15.0	1,046.8	1,022.5	24.30	43.070		
5,163.2	5,042.5	5,042.5	5,042.5	23.4	11.2	179.18	-0.7	-15.0	1,061.3	1,036.6	24.61	43.115		
5,200.0	5,078.4	5,078.4	5,078.4	23.5	11.3	179.18	-0.7	-15.0	1,069.5	1,044.7	24.81	43.098		
5,300.0	5,176.4	5,176.4	5,176.4	23.8	11.5	179.20	-0.7	-15.0	1,089.5	1,064.2	25.31	43.039		
5,400.0	5,275.0	5,275.0	5,275.0	24.1	11.7	179.22	-0.7	-15.0	1,106.0	1,080.3	25.78	42.908		
5,500.0	5,374.1	5,374.1	5,374.1	24.3	12.0	179.23	-0.7	-15.0	1,119.1	1,092.9	26.20	42.711		
5,600.0	5,473.6	5,473.6	5,473.6	24.5	12.2	179.24	-0.7	-15.0	1,128.8	1,102.2	26.59	42.449		
5,700.0	5,573.4	5,573.4	5,573.4	24.7	12.4	179.25	-0.7	-15.0	1,134.9	1,108.0	26.94	42.128		
5,800.0	5,673.4	5,673.4	5,673.4	24.8	12.6	179.25	-0.7	-15.0	1,137.6	1,110.4	27.25	41.747		
5,826.6	5,700.0	5,700.0	5,700.0	24.8	12.7	4.79	-0.7	-15.0	1,137.7	1,110.4	27.33	41.629		
5,900.0	5,773.4	5,773.4	5,773.4	24.9	12.9	4.79	-0.7	-15.0	1,137.7	1,110.1	27.62	41.196		
6,000.0	5,873.4	5,873.4	5,873.4	25.0	13.1	4.79	-0.7	-15.0	1,137.7	1,109.7	27.99	40.645		
6,100.0	5,973.4	5,973.4	5,973.4	25.1	13.3	4.79	-0.7	-15.0	1,137.7	1,109.4	28.37	40.105		
6,200.0	6,073.4	6,073.4	6,073.4	25.1	13.5	4.79	-0.7	-15.0	1,137.7	1,109.0	28.75	39.577		
6,300.0	6,173.4	6,173.4	6,173.4	25.2	13.8	4.79	-0.7	-15.0	1,137.7	1,108.6	29.13	39.061		
6,400.0	6,273.4	6,273.4	6,273.4	25.3	14.0	4.79	-0.7	-15.0	1,137.7	1,108.2	29.51	38.555		
6,500.0	6,373.4	6,373.4	6,373.4	25.4	14.2	4.79	-0.7	-15.0	1,137.7	1,107.8	29.89	38.061		
6,600.0	6,473.4	6,473.4	6,473.4	25.5	14.4	4.79	-0.7	-15.0	1,137.7	1,107.5	30.28	37.576		
6,700.0	6,573.4	6,573.4	6,573.4	25.6	14.7	4.79	-0.7	-15.0	1,137.7	1,107.1	30.66	37.103		
6,800.0	6,673.4	6,673.4	6,673.4	25.7	14.9	4.79	-0.7	-15.0	1,137.7	1,106.7	31.05	36.639		
6,900.0	6,773.4	6,773.4	6,773.4	25.8	15.1	4.79	-0.7	-15.0	1,137.7	1,106.3	31.44	36.185		
7,000.0	6,873.4	6,873.4	6,873.4	25.9	15.3	4.79	-0.7	-15.0	1,137.7	1,105.9	31.83	35.740		
7,100.0	6,973.4	6,973.4	6,973.4	26.0	15.6	4.79	-0.7	-15.0	1,137.7	1,105.5	32.23	35.305		
7,200.0	7,073.4	7,073.4	7,073.4	26.1	15.8	4.79	-0.7	-15.0	1,137.7	1,105.1	32.62	34.879		

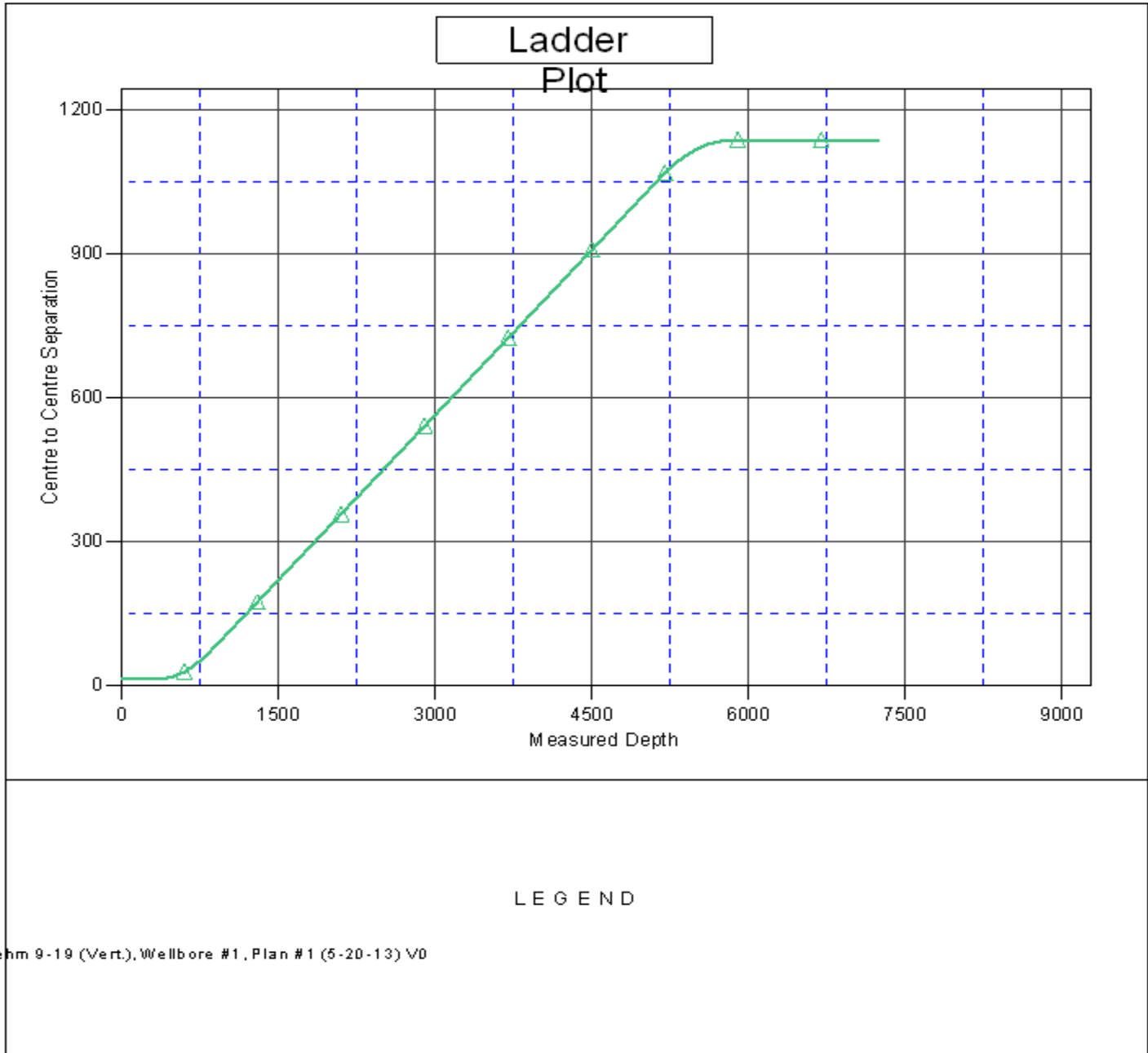
CC - Min centre to center distance or convergent point, SF - min separation factor, ES - min ellipse separation

Company:	Bayswater Exploration & Production, LLC	Local Co-ordinate Reference:	Well Blehm 16-19
Project:	SEC.19-T7N-R67W	TVD Reference:	WELL @ 4994.0ft (Original Well Elev)
Reference Site:	Blehm 19-L Pad Sec.19-T7N-R67W	MD Reference:	WELL @ 4994.0ft (Original Well Elev)
Site Error:	0.0ft	North Reference:	True
Reference Well:	Blehm 16-19	Survey Calculation Method:	Minimum Curvature
Well Error:	0.0ft	Output errors are at	2.00 sigma
Reference Wellbore	Wellbore #1	Database:	Landmark
Reference Design:	Plan #1 (5-20-13)	Offset TVD Reference:	Offset Datum

Offset Design Blehm 19-L Pad Sec.19-T7N-R67W - Blehm 9-19 (Vert.) - Wellbore #1 - Plan #1 (5-20-13)													Offset Site Error:	0.0 ft
Survey Program: 0-MWD													Offset Well Error:	0.0 ft
Reference	Offset	Semi Major Axis		Distance										Warning
Measured Depth (ft)	Vertical Depth (ft)	Measured Depth (ft)	Vertical Depth (ft)	Reference (ft)	Offset (ft)	Highside Toolface (°)	Offset Wellbore Centre +N/-S (ft)	+E/-W (ft)	Between Centres (ft)	Between Ellipses (ft)	Minimum Separation (ft)	Separation Factor		
7,208.8	7,082.2	7,082.2	7,082.2	26.1	15.8	4.79	-0.7	-15.0	1,137.7	1,105.1	32.65	34.841		
7,241.6	7,115.0	7,091.0	7,091.0	26.2	15.8	4.79	-0.7	-15.0	1,138.0	1,105.3	32.73	34.769		

Company:	Bayswater Exploration & Production, LLC	Local Co-ordinate Reference:	Well Blehm 16-19
Project:	SEC.19-T7N-R67W	TVD Reference:	WELL @ 4994.0ft (Original Well Elev)
Reference Site:	Blehm 19-L Pad Sec.19-T7N-R67W	MD Reference:	WELL @ 4994.0ft (Original Well Elev)
Site Error:	0.0ft	North Reference:	True
Reference Well:	Blehm 16-19	Survey Calculation Method:	Minimum Curvature
Well Error:	0.0ft	Output errors are at	2.00 sigma
Reference Wellbore	Wellbore #1	Database:	Landmark
Reference Design:	Plan #1 (5-20-13)	Offset TVD Reference:	Offset Datum

Reference Depths are relative to WELL @ 4994.0ft (Original Well Elev) Coordinates are relative to: Blehm 16-19
 Offset Depths are relative to Offset Datum Coordinate System is US State Plane 1983, Colorado Northern Zone
 Central Meridian is -105.500000 ° Grid Convergence at Surface is: 0.37°



Company:	Bayswater Exploration & Production, LLC	Local Co-ordinate Reference:	Well Blehm 16-19
Project:	SEC.19-T7N-R67W	TVD Reference:	WELL @ 4994.0ft (Original Well Elev)
Reference Site:	Blehm 19-L Pad Sec.19-T7N-R67W	MD Reference:	WELL @ 4994.0ft (Original Well Elev)
Site Error:	0.0ft	North Reference:	True
Reference Well:	Blehm 16-19	Survey Calculation Method:	Minimum Curvature
Well Error:	0.0ft	Output errors are at	2.00 sigma
Reference Wellbore	Wellbore #1	Database:	Landmark
Reference Design:	Plan #1 (5-20-13)	Offset TVD Reference:	Offset Datum

Reference Depths are relative to WELL @ 4994.0ft (Original Well Elev) Coordinates are relative to: Blehm 16-19
Offset Depths are relative to Offset Datum Coordinate System is US State Plane 1983, Colorado Northern Zone
Central Meridian is -105.500000 ° Grid Convergence at Surface is: 0.37°

