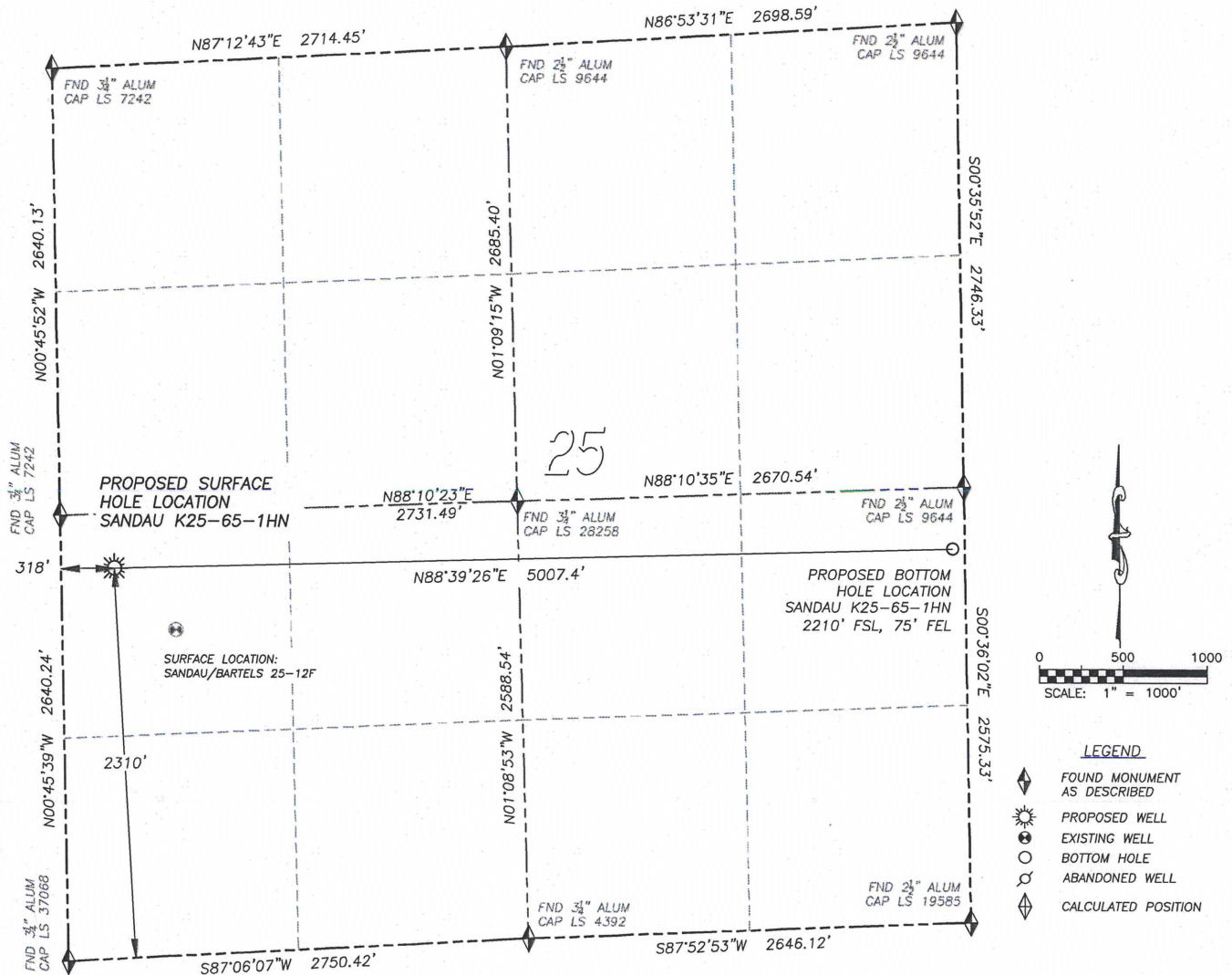


# WELL LOCATION CERTIFICATE SANDAU K25-65-1HN

SECTION 25, TOWNSHIP 4 NORTH, RANGE 66 WEST OF THE 6TH PRINCIPAL MERIDIAN

**NAD 83 LATITUDE AND LONGITUDE****SANDAU K25-65-1HN****SURFACE HOLE:**

LATITUDE: N40.28208°

LONGITUDE: W104.73374°

ELEVATION: 4780'

FOOTAGE: 2310' FSL, 318' FWL

PDOP: 1.4

QTR/QTR: NW4/SW4 SEC 25

PROP LINE: 318'± WEST

**BOTTOM HOLE:**

LATITUDE: N40.28228°

LONGITUDE: W104.71579°

FOOTAGE: 2210' FSL, 75' FEL

**NEAREST EXISTING WELL:****SANDAU BARTELS 25-12F**

LATITUDE: N40.28107°

LONGITUDE: W104.73244°

ELEVATION: 4786'

516' SOUTHEAST

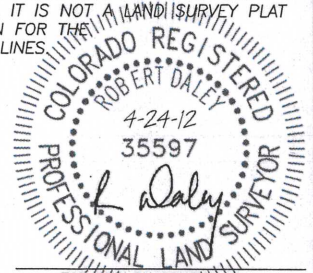
IN ACCORDANCE WITH A REQUEST FROM BRIAN DeROSE OF NOBLE ENERGY INC., DALEY LAND SURVEYING, INC. HAS DETERMINED THE SURFACE LOCATION OF THE SANDAU K25-65-1HN WELL TO BE 2310' FSL, 318' FWL, AS MEASURED AT NINETY (90) DEGREES FROM THE SECTION LINES OF SECTION 25, TOWNSHIP 4 NORTH, RANGE 66 WEST OF THE 6TH PRINCIPAL MERIDIAN, WELD COUNTY, COLORADO. THE BOTTOM HOLE LOCATION, PROVIDED BY THE CLIENT, IS TO BE 2210' FSL, 75' FEL.

I HEREBY CERTIFY THAT THIS WELL LOCATION CERTIFICATE WAS PREPARED BY ME OR UNDER MY DIRECT SUPERVISION, THAT THE WORK WAS COMPLETED ON 4/2/2012 FOR AND ON BEHALF OF NOBLE ENERGY, INC., AND THAT THIS MAP DOES NOT REPRESENT A BOUNDARY SURVEY, IT IS NOT A LAND SURVEY PLAT OR AN IMPROVEMENT SURVEY PLAT AND IT IS NOT TO BE RELIED UPON FOR THE ESTABLISHMENT OF FENCE, BUILDING OR OTHER FUTURE IMPROVEMENT LINES.

**NOTES:**

- 1) BEARINGS FOR THIS MAP ARE ASSUMED AND BASED UPON GPS OBSERVATIONS MADE BETWEEN MONUMENTS LOCATED AT THE SOUTHWEST CORNER AND WEST QUARTER CORNER OF SECTION 25, T.4N., R.66W.
- 2) HORIZONTAL DATUM IS NAD83.
- 3) VERTICAL DATUM IS NAVD88 AND ORIGINATES FROM THE LOCAL C.O.R.S. NETWORK, UTILIZING THE GEOID09 MODEL.
- 4) SEE LOCATION DRAWING FOR VISIBLE IMPROVEMENTS WITHIN 400' OF PROPOSED DISTURBED AREA.
- 5) SURFACE USE: AGRICULTURAL.

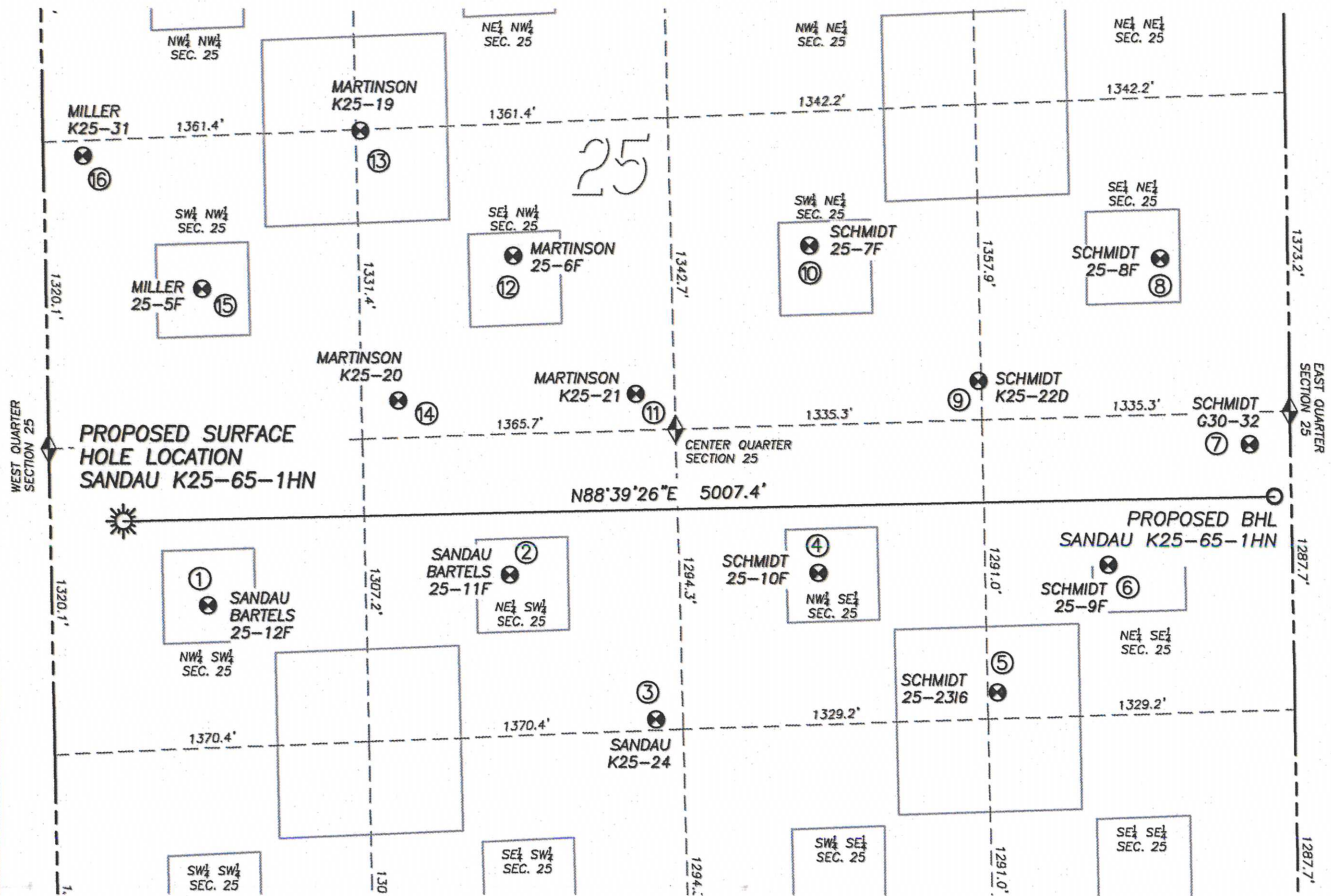
NOTICE: According to Colorado law you MUST commence any legal action based upon any defect in this W.L.C. within three years after you first discover such defect. In no event may any action based upon any such defect in this W.L.C. be commenced more than ten years from the date of the certification shown hereon.



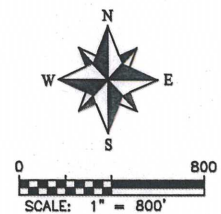
FOR AND ON BEHALF OF  
DALEY LAND SURVEYING INC.,  
Robert Daley, PLS 35597

## SITE SKETCH SANDAU K25-65-1HN

SECTION 25, TOWNSHIP 4 NORTH, RANGE 66 WEST OF THE 6TH PRINCIPAL MERIDIAN



	Well Name	Qtr - Qtr	Footage		Latitude	Longitude	Elevation	PDOP
1	SANDAU/BARTELS 25-12F	NW SW 25	1928' FSL	679' FWL	40.28107	-104.73244	4786	1.3
2	SANDAU/BARTELS 25-11F	NE SW 25	1994' FSL	1996' FWL	40.28140	-104.72772	4787	1.3
3	SANDAU K25-24	NE SW 25	1341' FSL	2621' FWL	40.27968	-104.72547	4796	1.3
4	SCHMIDT 25-10F	NW SE 25	1945' FSL	2056' FEL	40.28140	-104.72289	4785	1.3
5	SCHMIDT 25-2316	NE SE 25	1404' FSL	1288' FEL	40.27997	-104.72013	4791	1.3
6	SCHMIDT 25-9F	NE SE 25	1936' FSL	797' FEL	40.28147	-104.71838	4794	1.3
7	SCHMIDT G30-32	NE SE 25	2435' FSL	179' FEL	40.28289	-104.71617	4791	1.2
8	SCHMIDT 25-8F	SE NE 25	2059' FNL	552' FEL	40.28510	-104.71751	4781	1.2
9	SCHMIDT K25-22D	SE NE 25	2547' FNL	1348' FEL	40.28366	-104.72036	4780	1.3
10	SCHMIDT 25-7F	SW NE 25	772' FSL	2073' FEL	40.28527	-104.72296	4768	1.3
11	MARTINSON K25-21	SE NW 25	2524' FNL	2562' FWL	40.28354	-104.72570	4778	1.3
12	MARTINSON 25-6F	SE NW 25	1907' FNL	2036' FWL	40.28517	-104.72760	4774	1.3
13	MARTINSON K25-19	SE NW 25	1336' FNL	1379' FWL	40.28667	-104.72996	4762	1.4
14	MARTINSON K25-20	SE NW 25	2504' FNL	1525' FWL	40.28348	-104.72942	4780	1.3
15	MILLER 25-5F	SW NW 25	1984' FNL	679' FWL	40.28481	-104.73246	4774	1.4
16	MILLER K25-31	SW NW 25	1387' FNL	170' FWL	40.28640	-104.73429	4762	1.4



## LEGEND

- ◆ FOUND MONUMENT AS DESCRIBED
- ☀ PROPOSED WELL
- EXISTING WELL
- BOTTOM HOLE
- ⊗ ABANDONED WELL
- ◆ CALCULATED POSITION

NOTES:  
 1. THIS DOES NOT REPRESENT A BOUNDARY SURVEY  
 2. HORIZONTAL DATUM IS NAD83  
 3. VERTICAL DATUM IS NAVD88 AND ORIGINATES FROM THE LOCAL C.O.R.S. NETWORK, UTILIZING THE GEOID09 MODEL.