

**T10N, R58W, 6th P.M.**

2010 Alum. Cap,  
0.5' Below Ground  
Lat: 40.816692°  
Long: 103.860906°

2012 Alum. Cap,  
0.2' High  
Lat: 40.816800°  
Long: 103.851339°

2010 Alum. Cap,  
#17492, Flush  
W/Ground  
Lat: 40.816906°  
Long: 103.841850°

**WHITING OIL & GAS CORP.**

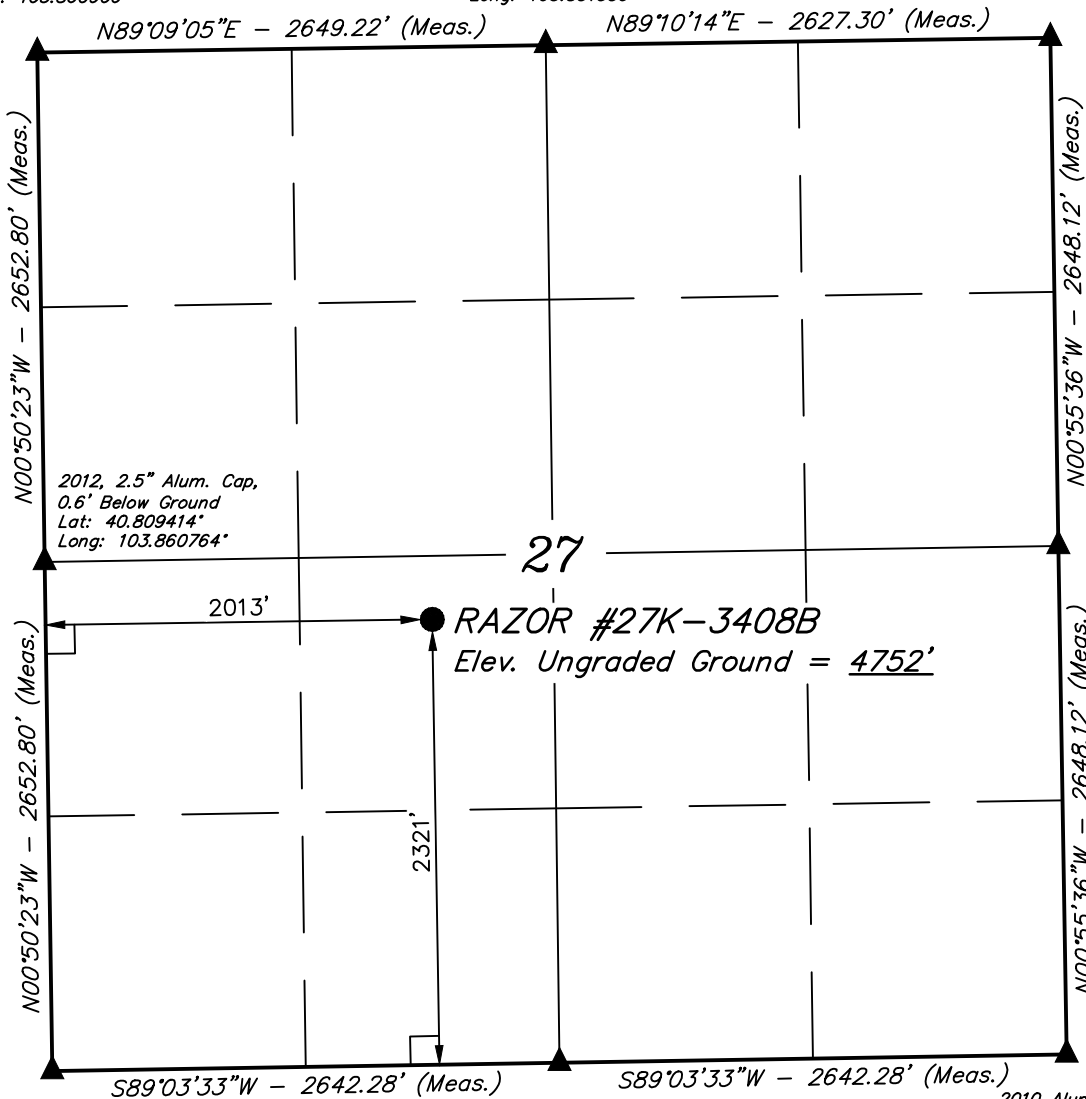
Well location, RAZOR #27K-3408B (SURFACE LOCATION), located as shown in the NE 1/4 SW 1/4 of Section 27, T10N, R58W, 6th P.M., Weld County, Colorado.

**BASIS OF ELEVATION**

SPOT ELEVATION LOCATED AT THE NORTHEAST CORNER OF SECTION 15, T9N, R58W, 6th P.M. TAKEN FROM THE GATEHOOK SPRING, QUADRANGLE, COLORADO, WELD COUNTY, 7.5 MINUTE QUAD (TOPOGRAPHIC MAP) PUBLISHED BY THE UNITED STATES DEPARTMENT OF THE INTERIOR, GEOLOGICAL SURVEY. SAID ELEVATION IS MARKED AS BEING 4679 FEET.

**BASIS OF BEARINGS**

BASIS OF BEARINGS IS A G.P.S. OBSERVATION.



2010 Alum. Cap,  
Flush W/Ground,  
#17492, E-W Fence  
Lat: 40.809642°  
Long: 103.841694°



SCALE

**CERTIFICATE**

THIS IS TO CERTIFY THAT THE ABOVE PLAT WAS PREPARED FROM FIELD NOTES OF ACTUAL SURVEYS MADE BY ME OR UNDER MY SUPERVISION AND THAT THE SAME ARE TRUE AND CORRECT TO THE BEST OF MY KNOWLEDGE AND BELIEF.

*[Signature]*  
REGISTERED LAND SURVEYOR  
REGISTRATION NO. 17492  
STATE OF COLORADO  
04-08-13

REV: 04-04-13 B.D.H.

**UINTAH ENGINEERING & LAND SURVEYING**  
85 SOUTH 200 EAST - VERNAL, UTAH 84078  
(435) 789-1017

**LEGEND:**

- └─┘ = 90° SYMBOL
- = PROPOSED WELL HEAD.
- ▲ = SECTION CORNERS LOCATED.

PDOP = 2.1

NAD 83 (SURFACE LOCATION)	
LATITUDE	= 40°48'30.94" (40.808594)
LONGITUDE	= 103°51'12.52" (103.853478)
NAD 27 (SURFACE LOCATION)	
LATITUDE	= 40°48'30.99" (40.808608)
LONGITUDE	= 103°51'10.71" (103.852975)

SCALE 1" = 1000'	DATE SURVEYED: 03-20-13	DATE DRAWN: 03-26-13
PARTY T.B. C.B. A.D.	REFERENCES G.L.O. PLAT	
WEATHER COOL	FILE WHITING OIL & GAS CORP.	

**T10N, R58W, 6th P.M.**

**WHITING OIL & GAS CORP.**

2010 Alum. Cap,  
0.5' Below Ground  
Lat: 40.802136°  
Long: 103.860622°

Surface  
Location

2010, 2.5" Alum. Cap,  
0.1' Below Ground  
Lat: 40.802256°  
Long: 103.851081°

2010 Alum. Cap,  
Flush W/Ground,  
E-W Fence  
Lat: 40.802375°  
Long: 103.841542°

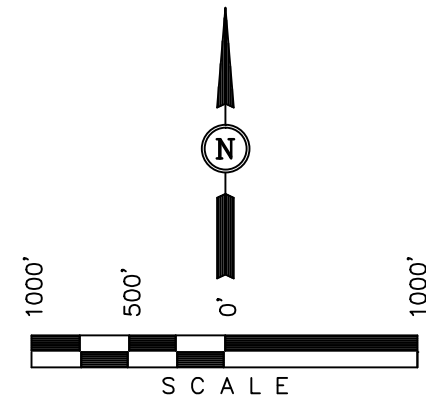
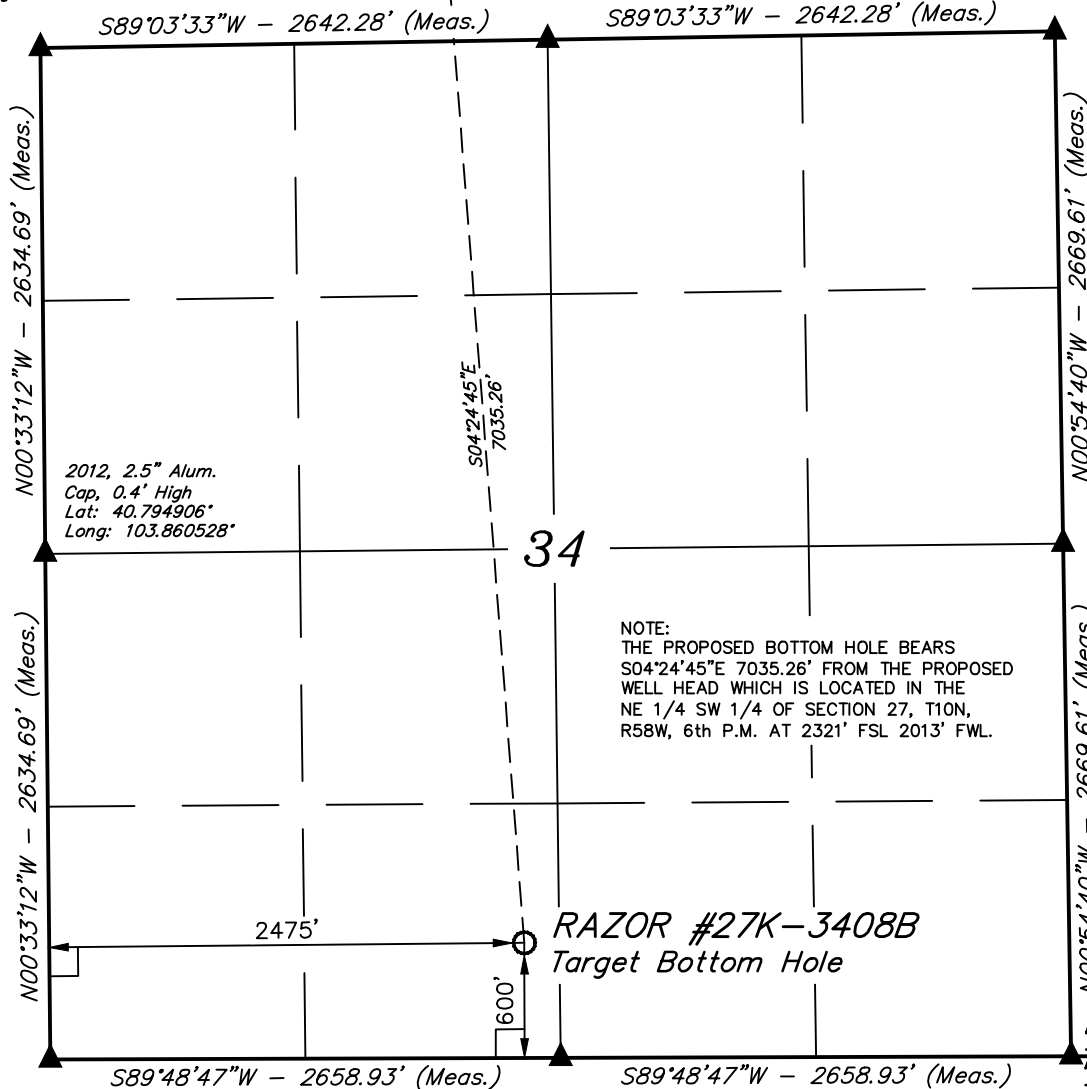
Well location, RAZOR #27K-3408B (TARGET BOTTOM HOLE), located as shown in the SE 1/4 SW 1/4 of Section 34, T10N, R58W, 6th P.M., Weld County, Colorado.

**BASIS OF ELEVATION**

SPOT ELEVATION LOCATED AT THE NORTHEAST CORNER OF SECTION 15, T9N, R58W, 6th P.M. TAKEN FROM THE GATEHOOK SPRING, QUADRANGLE, COLORADO, WELD COUNTY, 7.5 MINUTE QUAD (TOPOGRAPHIC MAP) PUBLISHED BY THE UNITED STATES DEPARTMENT OF THE INTERIOR, GEOLOGICAL SURVEY. SAID ELEVATION IS MARKED AS BEING 4679 FEET.

**BASIS OF BEARINGS**

BASIS OF BEARINGS IS A G.P.S. OBSERVATION.



**CERTIFICATE**

THIS IS TO CERTIFY THAT THE ABOVE PLAT WAS PREPARED FROM FIELD NOTES OF ACTUAL SURVEYS MADE BY ME OR UNDER MY SUPERVISION AND THAT THE SAME ARE TRUE AND CORRECT TO THE BEST OF MY KNOWLEDGE AND BELIEF.

REGISTERED LAND SURVEYOR  
REGISTRATION NO. 17492  
STATE OF COLORADO

REV: 04-04-13 B.D.H.  
REVISED: 03-29-13

**LEGEND:**

- └─┘ = 90° SYMBOL
- = PROPOSED WELL HEAD.
- ▲ = SECTION CORNERS LOCATED.

NAD 83 (TARGET BOTTOM HOLE)	
LATITUDE	= 40°47'21.64" (40.789344)
LONGITUDE	= 103°51'05.47" (103.851519)
NAD 27 (TARGET BOTTOM HOLE)	
LATITUDE	= 40°47'21.69" (40.789358)
LONGITUDE	= 103°51'03.66" (103.851017)

<b>UINTAH ENGINEERING &amp; LAND SURVEYING</b> <b>85 SOUTH 200 EAST - VERNAL, UTAH 84078</b> <b>(435) 789-1017</b>		
SCALE 1" = 1000'	DATE SURVEYED: 03-20-13	DATE DRAWN: 03-26-13
PARTY T.B. C.B. A.D.	REFERENCES G.L.O. PLAT	
WEATHER COOL	FILE WHITING OIL & GAS CORP.	