

T10N, R58W, 6th P.M.

WHITING OIL & GAS CORP.

2010 UELS Alum. Cap  
Flush W/Ground  
Lat: 40.816906°  
Long: 103.841850°

N89°43'12"E - 2634.39' (Meas.)

N89°43'12"E - 2634.39' (Meas.)

2012 UELS Alum.  
Cap, 0.1 High  
Lat: 40.816942°  
Long: 103.832336°

S01°13'45"E - 2661.92' (Meas.)

N00°55'36"W - 2648.12' (Meas.)

2012 UELS Alum. Cap  
Flush W/Ground  
Lat: 40.809642°  
Long: 103.841694°

26

RAZOR #26K-2306B  
Elev. Graded Ground = 4737'

1948'

N00°55'36"W - 2648.12' (Meas.)

S01°13'45"E - 2661.92' (Meas.)

2012 UELS Alum. Cap  
Flush W/Ground  
Lat: 40.802372°  
Long: 103.831975°

N89°59'08"W - 2648.64' (Meas.)

N89°59'08"W - 2648.64' (Meas.)

2010 UELS Alum. Cap  
Flush W/Ground  
E/W Fence  
Lat: 40.802375°  
Long: 103.841542°

2010 UELS Alum. Cap  
Flush W/Ground  
Fence Corner  
Lat: 40.802369°  
Long: 103.822411°

LEGEND:

└─ = 90° SYMBOL

● = PROPOSED WELL HEAD.

▲ = SECTION CORNERS LOCATED.

PDOP = 1.4

NAD 83 (SURFACE LOCATION)

LATITUDE = 40°48'31.99" (40.808886)  
LONGITUDE = 103°50'04.72" (103.834644)

NAD 27 (SURFACE LOCATION)

LATITUDE = 40°48'32.04" (40.808900)  
LONGITUDE = 103°50'02.91" (103.834142)

Well location, RAZOR #26K-2306B (SURFACE LOCATION), located as shown in the NE 1/4 SW 1/4 of Section 26, T10N, R58W, 6th P.M., Weld County, Colorado.

### BASIS OF ELEVATION

SPOT ELEVATION LOCATED AT THE NORTHEAST CORNER OF SECTION 15, T9N, R58W, 6th P.M. TAKEN FROM THE GATEHOOK SPRING, QUADRANGLE, COLORADO, WELD COUNTY, 7.5 MINUTE QUAD (TOPOGRAPHIC MAP) PUBLISHED BY THE UNITED STATES DEPARTMENT OF THE INTERIOR, GEOLOGICAL SURVEY. SAID ELEVATION IS MARKED AS BEING 4679 FEET.

### BASIS OF BEARINGS

BASIS OF BEARINGS IS A G.P.S. OBSERVATION.



2012 UELS Alum.  
Cap, 0.1 High  
Lat: 40.809672°  
Long: 103.822617°

1000'  
500'  
0'  
500'  
1000'

S C A L E

### CERTIFICATE

THIS IS TO CERTIFY THAT THE ABOVE PLAT WAS PREPARED FROM FIELD NOTES OF ACTUAL SURVEYS MADE BY ME OR UNDER MY SUPERVISION AND THAT THE SAME ARE TRUE AND CORRECT TO THE BEST OF MY KNOWLEDGE AND BELIEF.

REGISTERED LAND SURVEYOR  
REGISTRATION NO. 17492  
STATE OF COLORADO  
03-25-13

UINTAH ENGINEERING & LAND SURVEYING  
85 SOUTH 200 EAST - VERNAL, UTAH 84078  
(435) 789-1017

SCALE 1" = 1000'  
DATE SURVEYED: 03-18-13  
DATE DRAWN: 03-25-13

PARTY J.H. T.B. Z.L.  
REFERENCES G.L.O. PLAT

WEATHER WARM  
FILE WHITING OIL & GAS CORP.

T10N, R58W, 6th P.M.

WHITING OIL & GAS CORP.

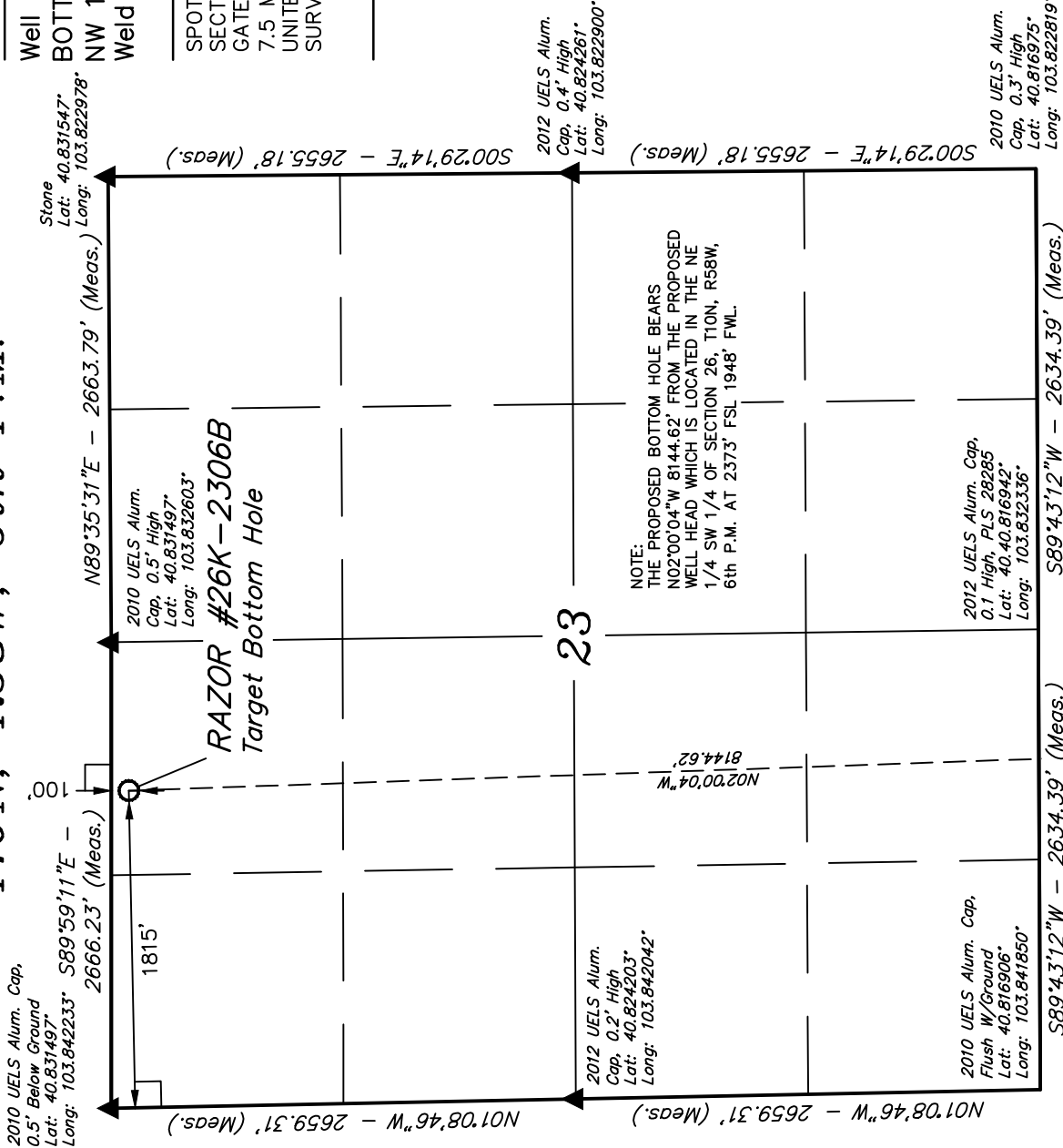
Well location, RAZOR #26K-2306B (TARGET BOTTOM HOLE), located as shown in the NE 1/4 NW 1/4 of Section 23, T10N, R58W, 6th P.M., Weld County, Colorado.

BASIS OF ELEVATION

SPOT ELEVATION LOCATED AT THE NORTHEAST CORNER OF SECTION 15, T9N, R58W, 6th P.M. TAKEN FROM THE GATEHOOK SPRING, QUADRANGLE, COLORADO, WELD COUNTY, 7.5 MINUTE QUAD (TOPOGRAPHIC MAP) PUBLISHED BY THE UNITED STATES DEPARTMENT OF THE INTERIOR, GEOLOGICAL SURVEY. SAID ELEVATION IS MARKED AS BEING 4679 FEET.

BASIS OF BEARINGS

BASIS OF BEARINGS IS A G.P.S. OBSERVATION.



NOTE:  
THE PROPOSED BOTTOM HOLE BEARS  
N02°00'04"W 8144.62' FROM THE PROPOSED  
WELL HEAD WHICH IS LOCATED IN THE NE  
1/4 SW 1/4 OF SECTION 26, T10N, R58W,  
6th P.M. AT 2373' FSL 1948' FWL.

CERTIFICATE  
THIS IS TO CERTIFY THAT THE ABOVE PLAT WAS PREPARED FROM  
FIELD NOTES OF ACTUAL SURVEYS MADE BY ME OR UNDER MY  
SUPERVISION AND THAT THE SAME ARE TRUE AND CORRECT TO THE  
BEST OF MY KNOWLEDGE AND BELIEF.  
REGISTERED LAND SURVEYOR  
REGISTRATION NO. 171492  
STATE OF COLORADO  
03-25-13

LEGEND:

- 90° SYMBOL
- PROPOSED WELL HEAD.
- SECTION CORNERS LOCATED.

Surface Location

NAD 83 (TARGET BOTTOM HOLE)
LATITUDE = 40°49'52.40" (40.831222)
LONGITUDE = 103°50'08.41" (103.835669)
NAD 27 (TARGET BOTTOM HOLE)
LATITUDE = 40°49'52.45" (40.831236)
LONGITUDE = 103°50'06.60" (103.835167)

UNTAAH ENGINEERING & LAND SURVEYING
85 SOUTH 200 EAST - VERNAL, UTAH 84078
(435) 789-1017
SCALE 1" = 1000'
DATE SURVEYED: 03-18-13
DATE DRAWN: 03-25-13
PARTY J.H. T.B. Z.L.
REFERENCES G.L.O. PLAT
WEATHER WARM
FILE
WHITING OIL & GAS CORP.