

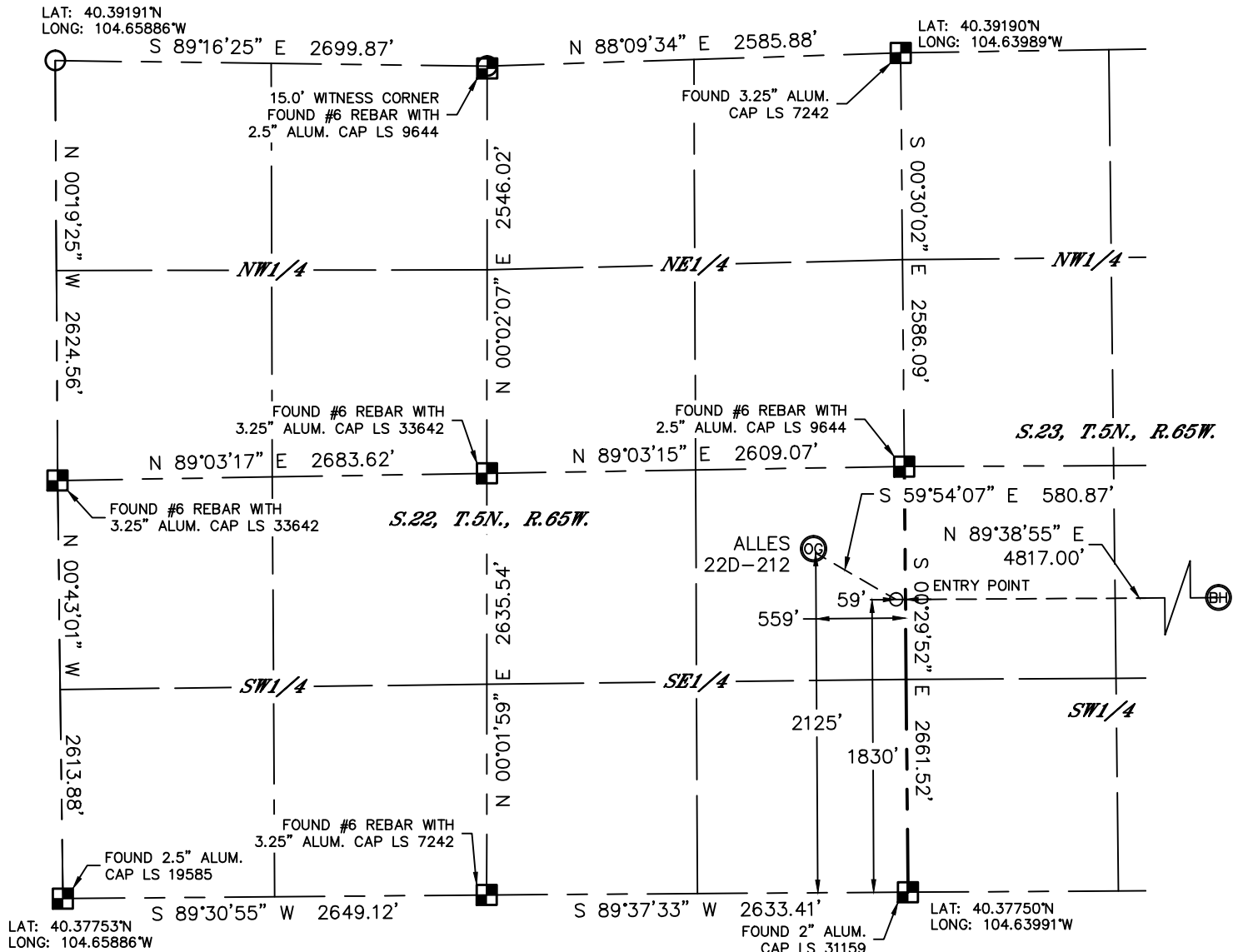


Lat40°, Inc. 1635 Foxtrail Drive, Suite 325 Loveland, CO 970-776-3321

WELL LOCATION CERTIFICATE

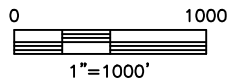
THIS MAP DOES NOT REPRESENT A BOUNDARY SURVEY

SECTION: 22
TOWNSHIP: 5N
RANGE: 65W



In accordance with a request from MARK ALESSI with PDC ENERGY Lat40°, Inc. has determined the surface location of the ALLES 22D-212 to be 2125' from the SOUTH line and 559' from the EAST line as measured at right angles from the section lines of Section 22, Township 5 North, Range 65 West and the bottom hole to be 1830' from the SOUTH line and 500' from the EAST line as measured at right angles from the section lines of Section 23, Township 5 North, Range 65 West of the Sixth Principal Meridian, County of Weld, State of Colorado.

I hereby state that this Well Location Certificate was prepared by me, or under my direct supervision, that the fieldwork was completed on 3/20/2013, for and on behalf of PDC ENERGY. That this is not a Land Survey Plat or an Improvement Survey Plat, and that it is not to be relied upon for establishment of fence, building, or other future improvement lines.



NOTE:

- 1) Bearings shown are Grid Bearings of the Colorado State Plane Coordinate System, North Zone, North American Datum 1983/2007. The lineal dimensions as contained herein are based upon the "U.S. Survey Foot."
- 2) Ground elevations are based on an observed GPS elevation (NAVD 1988 DATUM).
- 3) IMPROVEMENTS: See LOCATION DRAWING for all visible improvements within 400' of disturbed area.
- 4) SURFACE USE: CROPLAND
- 5) INSTRUMENT OPERATOR: BRIAN ROTTINGHAUS

SURFACE LOCATION

LAT: 40.38334°N
LONG: 104.64191°W
PDOP: 1.6
ELEV: 4645'
1/4, 1/4: NE1/4SE1/4
NEAREST PROPERTY LINE:
186' SOUTHWEST

BOTTOM HOLE

LAT: 40.38248°N
LONG: 104.62283°W

ENTRY POINT

LAT: 40.38252°N
LONG: 104.64011°W

NOTE

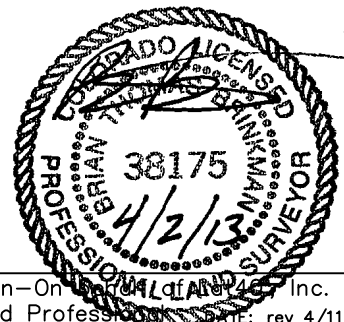
According to Colorado law, you must commence any legal action based upon any defect in this W.L.C. within three years after you discover such defect. In no event, may any action based upon any defect in this survey be commenced more than ten years after the date of the certificate shown hereon. (13-80-105 C.R.S.)

LEGEND

- = ALIQUOT MONUMENT AS DESCRIBED
○ = CALCULATED POSITION

SHEET 1 OF 2

Brian T. Brinkman—On behalf of Lat40°, Inc.
Colorado Licensed Professional Land Surveyor No. 38175
DATE: rev 4/11/2013
PROJECT#: 2013036





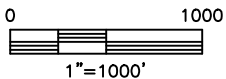
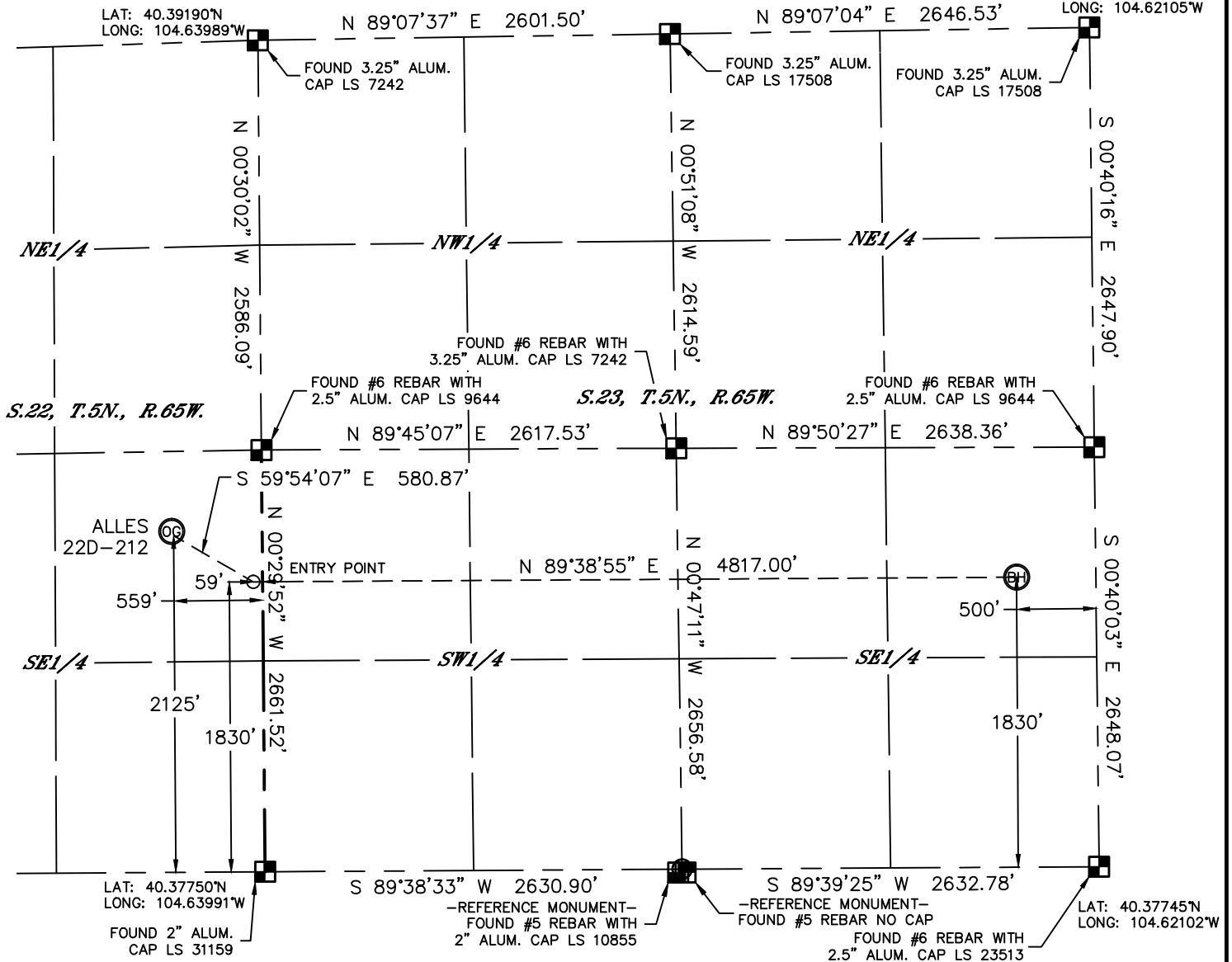
Lat40°, Inc. 1635 Foxtrail Drive, Suite 325 Loveland, CO 970-776-3321

WELL LOCATION CERTIFICATE

THIS MAP DOES NOT REPRESENT A BOUNDARY SURVEY

SECTION: 22
TOWNSHIP: 5N
RANGE: 65W

LAT: 40.39198°N
LONG: 104.62105°W



NOTE

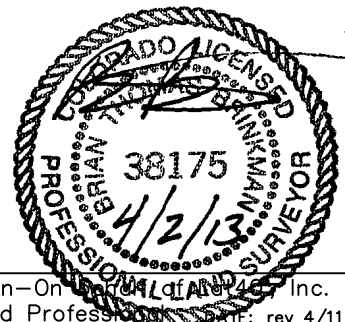
According to Colorado law, you must commence any legal action based upon any defect in this W.L.C. within three years after you discover such defect. In no event, may any action based upon any defect in this survey be commenced more than ten years after the date of the certificate shown hereon. (13-80-105 C.R.S.)

LEGEND

- = ALIQUOT MONUMENT AS DESCRIBED
- = CALCULATED POSITION

SHEET 2 OF 2

Brian T. Brinkman—On behalf of Lat40°, Inc.
Colorado Licensed Professional Land Surveyor No. 38175
DATE: rev 4/11/2013
PROJECT#: 2013036



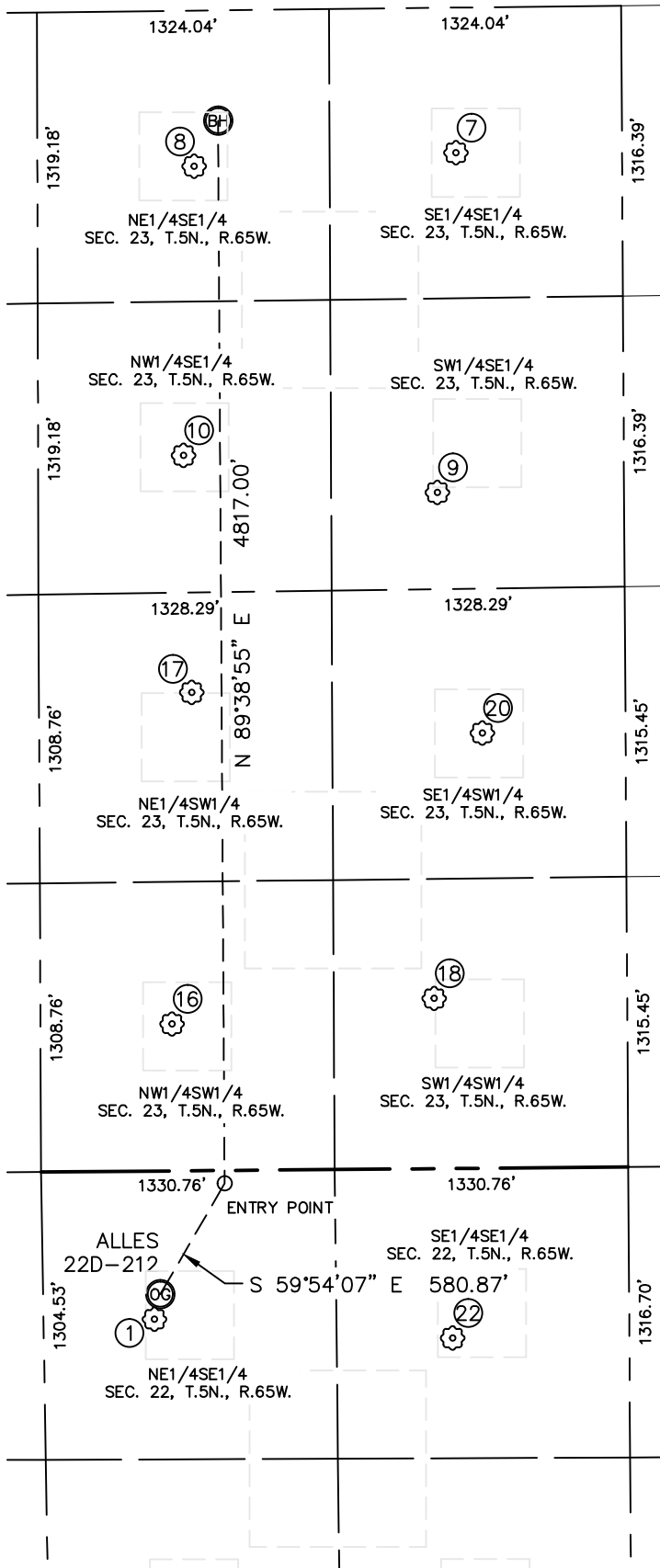


Lat40°, Inc. 1635 Foxtrail Drive, Suite 325 Loveland, CO 970-776-3321

SITE SKETCH

ALLES 22D-212

SECTION: 22
TOWNSHIP: 5N
RANGE: 65W



①
ALLES 9-22
NE1/4SE1/4
2152' FSL
672' FEL
LAT-40.38341°N
LONG-104.64231°W
PDOP: 1.5
ELEV: 4646'

⑦
BROWN 1-23
SE1/4SE1/4
753' FSL
658' FEL
LAT-40.37952°N
LONG-104.62339°W
PDOP: 1.7
ELEV: 4642'

⑧
ESTHER 1-23
NE1/4SE1/4
1940' FSL
705' FEL
LAT-40.38278°N
LONG-104.62356°W
PDOP: 1.7
ELEV: 4641'

⑨
BROWN 23-43
SW1/4SE1/4
847' FSL
2197' FEL
LAT-40.37980°N
LONG-104.62891°W
PDOP: 1.8
ELEV: 4644'

⑩
LILLIE 1-23
NW1/4SE1/4
1996' FSL
2016' FEL
LAT-40.38295°N
LONG-104.62827°W
PDOP: 1.9
ELEV: 4643'

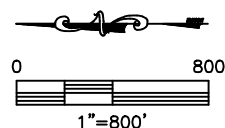
⑩
BUDERUS 12-23
NW1/4SW1/4
2064' FSL
665' FWL
LAT-40.38316°N
LONG-104.63751°W
PDOP: 2.3
ELEV: 4645'

⑪
BADLEY 23-31
NE1/4SW1/4
1966' FSL
2168' FWL
LAT-40.38288°N
LONG-104.63212°W
PDOP: 1.8
ELEV: 4643'

⑪
BUDERUS 13-23
SW1/4SW1/4
875' FSL
771' FWL
LAT-40.37989°N
LONG-104.63714°W
PDOP: 1.7
ELEV: 4646'

⑪
MARIE 1-23
SE1/4SW1/4
650' FSL
1972' FWL
LAT-40.37927°N
LONG-104.63283°W
PDOP: 1.9
ELEV: 4645'

⑪
LOFLAND 44-22
SE1/4SE1/4
802' FSL
769' FEL
LAT-40.37971°N
LONG-104.64266°W
PDOP: 2.1
ELEV: 4648'



DATE: rev 4/11/2013
PROJECT#: 2013036