

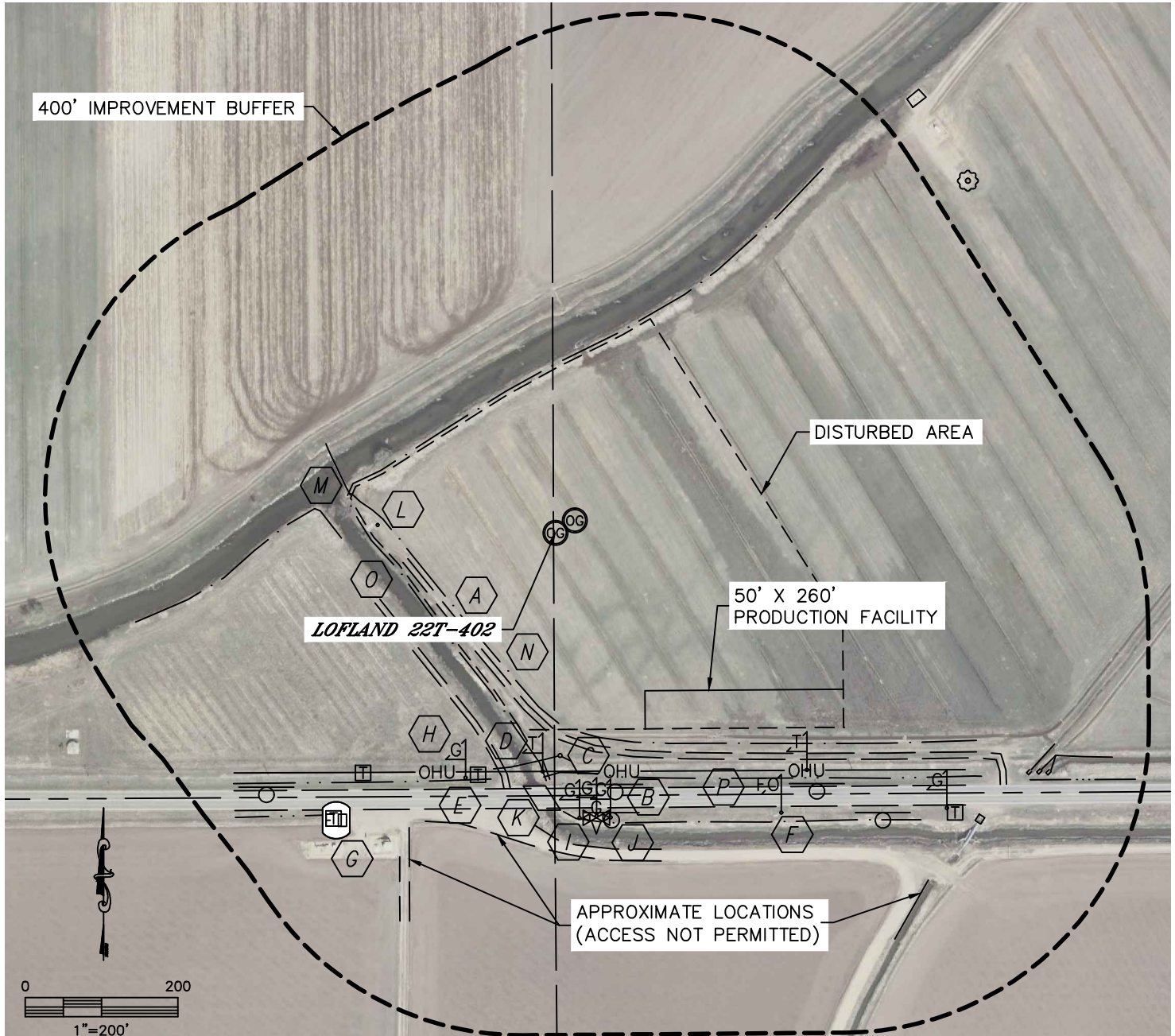


Lat40°, Inc. 1635 Foxtrail Drive, Suite 325 Loveland, CO 970-776-3321

LOCATION DRAWING

LOFLAND 22T-HZ PAD

SECTION: 22
TOWNSHIP: 5N
RANGE: 65W



IMPROVEMENTS:

(MEASURED FROM THE PROPOSED LOFLAND 22T-402 WELL LOCATION)

- | | | |
|--|---|--|
| A FIELD ROAD 172' SW, 234' SW,
(384' S & 431' SW APPROX. LOC.) | G FIBER OPTIC VAULT 473' SW | M IRRIGATION PIPE 273' NW, 292' SW |
| B COUNTY ROAD 54 335' S | H GAS MARKER 342' SW,
375', 379' & 384' S, 626' SE | N DITCH 164' SW, 710' & 717' SE
(667' SE APPROX. LOC.) |
| C OVERHEAD UTILITY LINE 312' S | I GAS VALVE 377' S | O CANAL 195' SW, 192' NW, 365' SE |
| D TELEPHONE MARKER 313' S,
452' SE | J SIGN 348', 383', 481' &
571' SE, 511' SW | P BARROW DITCH 314' S, 480' SW,
701' SE |
| E TELEPHONE PEDESTAL 333',
403' & 474' SW, 639' SE | K BRIDGE 332' S | |
| F FIBER OPTIC MARKER 471' SE | L CONCRETE STRUCTURE 233' W,
292' S, 666', 692', 704' & 715' SE | |

NEAREST: BUILDING 865' SW (OUT-BUILDING), PUBLIC ROAD 335' S (CR 54),
ABOVE GROUND UTILITY 312' S, RAILROAD 4300' SE, PROPERTY LINE 344' S

DATE: rev 5/01/2013
PROJECT#: 2013036