

# WELL LOCATION CERTIFICATE

SECTION 34, TOWNSHIP 7 NORTH, RANGE 66 WEST, 6TH P.M.

NW CRN SEC. 34  
2.5" AC LS 23513  
N 40.53862°  
W 104.77417°

N89°22'01"E 2783.5'

N89°09'55"E 2774.2'

NE CRN SEC. 34  
2.5" AC LS 23513  
N 40.53877°  
W 104.75417°

N1/4 CRN SEC. 34  
2.5" AC LS 12374  
N 40.53869°  
W 104.76415°

BASIS OF BEARINGS  
N02°03'23"E 2664.7'

## NOTES:

THIS IS A HORIZONTAL DRILL WELL.  
BOTTOM HOLE AT 500' FSL, 1610' FWL.  
WELL FALLS IN A PLOWED FIELD.  
SEE LOCATION DRAWING FOR IMPROVEMENTS

GROUND ELEVATION = 4915'  
LAT. & LONG. = N 40.53773°  
W 104.76569°

W1/4 CRN SEC. 34  
2.5" AC LS 23513  
N 40.53131°  
W 104.77453°

2665.2'

N02°03'35"E

N 40.52400°  
W 104.77490°

SW CRN SEC. 34  
2.5" AC LS 23513

BH = 500' FSL,  
1610' FWL.  
LAT. & LONG. = N 40.52543°  
W 104.76905°

N89°11'19"E 2635.4'

S1/4 CRN SEC. 34  
2.5" AC LS ILLEGIBLE  
N 40.52409°  
W 104.76544°

N89°03'00"E 2685.9'

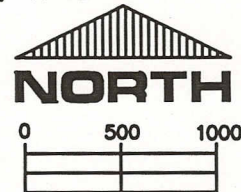
SE CRN SEC. 34  
2.5" AC LS 23513  
N 40.52418°  
W 104.75576°

I HEREBY STATE TO PDC ENERGY THAT THE SURFACE LOCATION OF THE WELL  
ANDERSON 34J-323 IS LOCATED 346' FNL & 2371' FWL, SEC. 34, T7N, R66W, 6PM.



## LEGEND

- FOUND MONUMENT
- PROPOSED WELL
- BOTTOM HOLE



SCALE 1" = 1000'

ELEVATION SOURCE = USGS 7.5' QUAD.MAP CONTOURS  
NGVD 1929 DATUM.

LAT. & LONG. ARE DIFFERENTIALLY CORRECTED (WGS'84)  
USING (DGPS) WITH A (PDOP) VALUE OF 1.6.

THOMAS G. CARLSON, PLS 24657  
HORSESHOE SURVEYING, LLC

SHOWN DISTANCES ARE FIELD MEASURED - EXTERIOR SECTION LINES  
ARE DRAWN TO SCALE (BEST APPROX. OR FOUND MONUMENT).

THIS IS NOT A MONUMENTED BOUNDARY SURVEY, IT IS ONLY A  
DRAWING INTENDED TO DEPICT THE WELL LOCATION TO SECTION LINES.

DISTANCES TO WELL SHOWN PERPENDICULAR  
TO SECTION LINES.

PREPARED BY:

HORSESHOE SURVEYING, LLC  
PO BOX 150458  
LAKEWOOD, CO 80215  
(720)872-0196

DRAWING DATE:

3-30-13

FIELD DATE:

3-28-13

BY:

TGC

ANDERSON 34J-323

LOCATION:

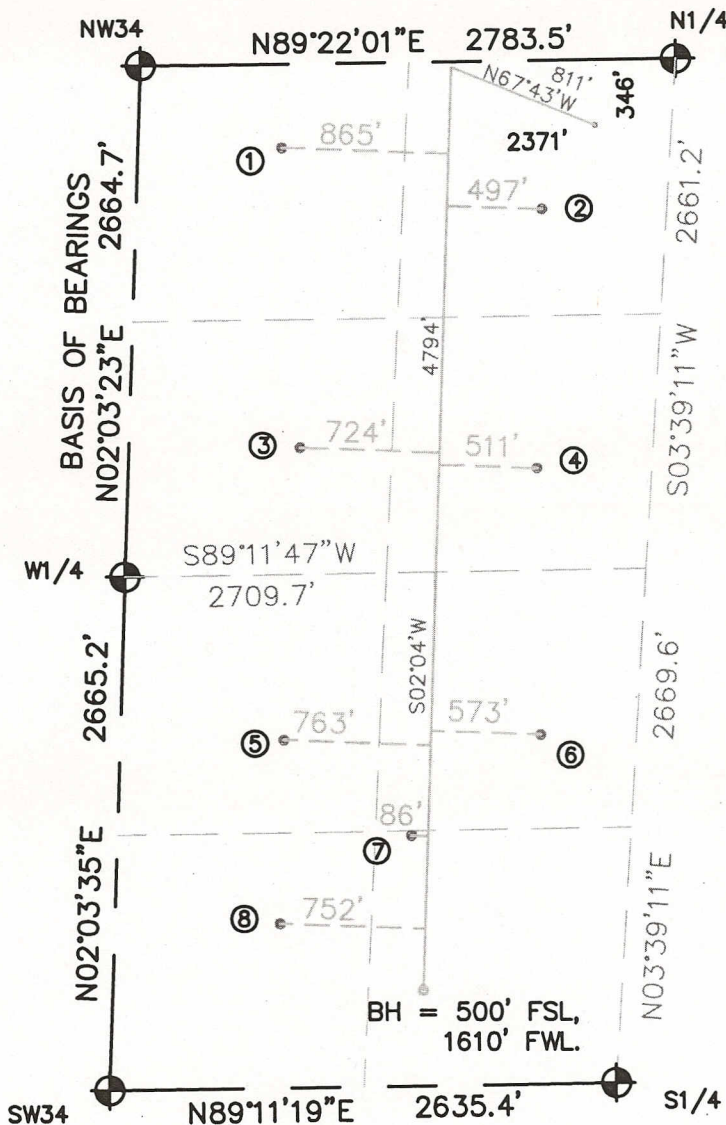
WELD COUNTY, CO

NW1/4, SEC. 34, T7N, R66W, 6TH P.M.



# EXISTING WELL LOCATIONS DRAWING

W1/2 SECTION 34, TOWNSHIP 7 NORTH, RANGE 66 WEST, 6TH P.M.

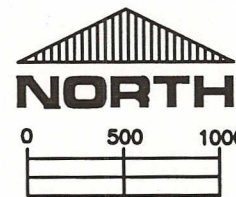


- ① NWNW- ANDERSON 1-34  
441' FNL, 745' FWL  
N 40.53743°, W 104.77156°
- ② NENW- ANDERSON 21-34  
771' FNL, 2107' FWL  
N 40.53655°, W 104.76670°
- ③ SWNW- ANDERSON 12-34  
1989' FNL, 886' FWL  
N 40.53318°, W 104.77126°
- ④ SENW- ANDERSON 22-34  
2112' FNL, 2121' FWL  
N 40.53287°, W 104.76683°
- ⑤ NWSW- ANDERSON 13-34  
1809' FSL, 847' FWL  
N 40.52900°, W 104.77161°
- ⑥ NESW- ANDERSON 23-34  
1816' FSL, 2183' FWL  
N 40.52906°, W 104.76680°
- ⑦ SW- ANDERSON 34B  
1307' FSL, 1524' FWL  
N 40.52764°, W 104.76924°
- ⑧ SWSW- ANDERSON 14-34  
858' FSL, 858' FWL  
N 40.52639°, W 104.77178°

NO OTHER VISIBLE WELLS  
IN THE W1/2 SECTION 34

## LEGEND

- ⊕ = FOUND MONUMENT
- = PROPOSED/EXISTING WELL
- = BOTTOM HOLE



SCALE 1" = 1000'

LAT. & LONG. ARE DIFFERENTIALLY CORRECTED (WGS'84)  
USING (DGPS) WITH (PDOP) VALUES LESS THAN SIX (6).

THIS IS NOT A MONUMENTED BOUNDARY SURVEY, IT IS ONLY A  
DRAWING INTENDED TO SHOW EXISTING WELL LOCATIONS TO SECTION LINES.

DISTANCES TO WELLS SHOWN PERPENDICULAR  
TO SECTION LINES.

PREPARED BY:

HORSESHOE SURVEYING, LLC  
PO BOX 150458  
LAKEWOOD, CO 80215  
(720)872-0196

DRAWING DATE:  
3-30-13

FIELD DATE:  
3-28-13

BY:  
TGC

ANDERSON 34M-HZ 6Pad  
34J-323

LOCATION:

WELD COUNTY, CO  
W1/2, SEC. 34, T7N, R66W, 6TH P.M.