

WELL LOCATION CERTIFICATE

SECTION 34, TOWNSHIP 7 NORTH, RANGE 66 WEST, 6TH P.M.

NW CRN SEC. 34
2.5" AC LS 23513
N 40.53862°
W 104.77417°

N89°22'01"E 2783.5'

N89°09'55"E 2774.2'

NE CRN SEC. 34
2.5" AC LS 23513
N 40.53877°
W 104.75417°

N1/4 CRN SEC. 34
2.5" AC LS 12374
N 40.53869°
W 104.76415°

2461'
351'
N25°21'E

4791'

S02°04'W

S02°04'W

S02°04'W

S02°04'W

S02°04'W

S02°04'W

NOTES:

THIS IS A HORIZONTAL DRILL WELL
BOTTOM HOLE AT 500' FSL, 2600' FWL
WELL FALLS IN A PLOWED FIELD.
SEE LOCATION DRAWING FOR IMPROVEMENTS

GROUND ELEVATION = 4915'
LAT. & LONG. = N 40.53773°
W 104.76536°

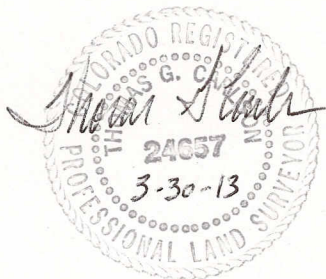
BH = 500' FSL,
2600' FWL
LAT. & LONG. = N 40.52546°
W 104.76550°

S1/4 CRN SEC. 34
2.5" AC LS ILLEGIBLE
N 40.52409°
W 104.76544°

E1/4 CRN SEC. 34
2.5" AC LS 23513
N 40.53148°
W 104.75497°

SE CRN SEC. 34
2.5" AC LS 23513
N 40.52418°
W 104.75576°

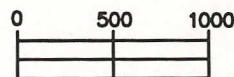
I HEREBY STATE TO PDC ENERGY THAT THE SURFACE LOCATION OF THE WELL
ANDERSON 34M-403 IS LOCATED 346' FNL & 2461' FWL, SEC. 34, T7N, R66W, 6PM.



LEGEND

- FOUND MONUMENT
- PROPOSED WELL
- BOTTOM HOLE

NORTH



SCALE 1" = 1000'

ELEVATION SOURCE = USGS 7.5' QUAD.MAP CONTOURS
NGVD 1929 DATUM.

LAT. & LONG. ARE DIFFERENTIALLY CORRECTED (WGS'84)
USING (DGPS) WITH A (PDOP) VALUE OF 1.6.

SHOWN DISTANCES ARE FIELD MEASURED - EXTERIOR SECTION LINES
ARE DRAWN TO SCALE (BEST APPROX. OR FOUND MONUMENT).

DISTANCES TO WELL SHOWN PERPENDICULAR
TO SECTION LINES.

THOMAS G. CARLSON, PLS 24657
HORSESHOE SURVEYING, LLC

THIS IS NOT A MONUMENTED BOUNDARY SURVEY, IT IS ONLY A
DRAWING INTENDED TO DEPICT THE WELL LOCATION TO SECTION LINES.

PREPARED BY:

HORSESHOE SURVEYING, LLC
PO BOX 150458
LAKEWOOD, CO 80215
(720)872-0196

DRAWING DATE:
3-30-13

FIELD DATE:
3-28-13

BY:
TGC

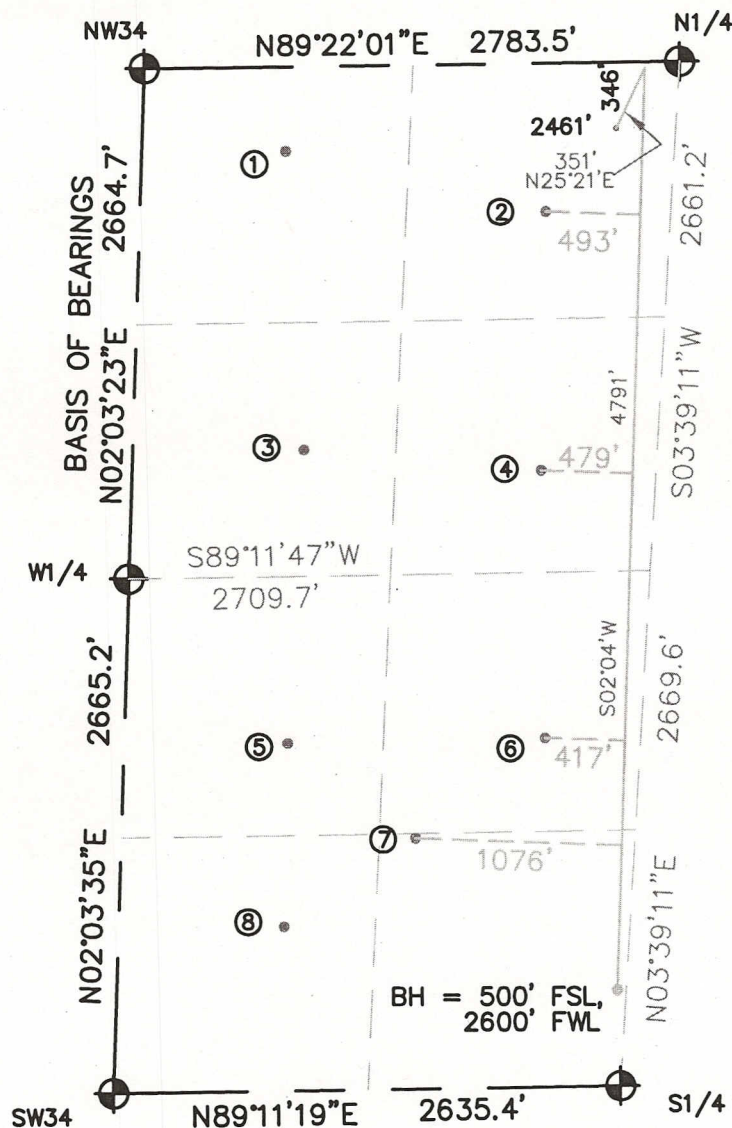
ANDERSON 34M-403

LOCATION:

WELD COUNTY, CO
NW1/4, SEC. 34, T7N, R66W, 6TH P.M.

EXISTING WELL LOCATIONS DRAWING

W1/2 SECTION 34, TOWNSHIP 7 NORTH, RANGE 66 WEST, 6TH P.M.

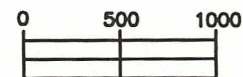


- ① NWNW- ANDERSON 1-34
441' FNL, 745' FWL
N 40.53743°, W 104.77156°
- ② NENW- ANDERSON 21-34
771' FNL, 2107' FWL
N 40.53655°, W 104.76670°
- ③ SWNW- ANDERSON 12-34
1989' FNL, 886' FWL
N 40.53318°, W 104.77126°
- ④ SENW- ANDERSON 22-34
2112' FNL, 2121' FWL
N 40.53287°, W 104.76683°
- ⑤ NWSW- ANDERSON 13-34
1809' FSL, 847' FWL
N 40.52900°, W 104.77161°
- ⑥ NESW- ANDERSON 23-34
1816' FSL, 2183' FWL
N 40.52906°, W 104.76680°
- ⑦ SW- ANDERSON 34B
1307' FSL, 1524' FWL
N 40.52764°, W 104.76924°
- ⑧ SWSW- ANDERSON 14-34
858' FSL, 858' FWL
N 40.52639°, W 104.77178°

NO OTHER VISIBLE WELLS
IN THE W1/2 SECTION 34

LEGEND

- ⊕ = FOUND MONUMENT
- = PROPOSED/EXISTING WELL
- = BOTTOM HOLE



SCALE 1" = 1000'

LAT. & LONG. ARE DIFFERENTIALLY CORRECTED (WGS'84)
USING (DGPS) WITH (PDOP) VALUES LESS THAN SIX (6).

THIS IS NOT A MONUMENTED BOUNDARY SURVEY, IT IS ONLY A
DRAWING INTENDED TO SHOW EXISTING WELL LOCATIONS TO SECTION LINES.

DISTANCES TO WELLS SHOWN PERPENDICULAR
TO SECTION LINES.

PREPARED BY:

HORSESHOE SURVEYING, LLC
PO BOX 150458
LAKEWOOD, CO 80215
(720)872-0196

ANDERSON 34M-HZ 6Pad
34M-403

DRAWING DATE:
3-30-13

FIELD DATE:
3-28-13

BY:
TGC

LOCATION:

WELD COUNTY, CO
W1/2, SEC. 34, T7N, R66W, 6TH P.M.