



VDL CCL GAMMA-RAY CEMENT BOND LOG

Pioneer Energy Services

Company COMET RIDGE OIL & GAS
Well #1 SMOKER 22-11"
Field LONG SHADOW
County LINCOLN State COLORADO

Location: API # : 05-073-06259

Other Services

SHL 2307' FWL 1898' FNL

SEC 11 TWP 13S RGE 54W

PERF.

Permanent Datum	GL	Elevation	4882'	Elevation
Log Measured From	KB			K.B. 4892'
Drilling Measured From	KB			D.F. 4891'
				G.L. 4882'

Date 5/31/13

Run Number	ONE		
Depth Driller	7496'		
Depth Logger	7420'		
Bottom Logged Interval	7404'		
Top Log Interval	5400'		
Open Hole Size	7.45"		
Type Fluid	WATER		
Density / Viscosity	NA		
Max. Recorded Temp.	184 DEG.F		
Estimated Cement Top	6850'		
Time Well Ready	NA		
Time Logger on Bottom	NA		
Equipment Number	9605		
Location	FT MORGAN		
Recorded By	TODD YOUNG		
Witnessed By	GARY OHLMAN		

Borehole Record			Tubing Record				
Run Number	Bit	From	To	Size	Weight	From	To

Casing Record	Size	Wgt/Ft	Top	Bottom
Surface String				
Prot. String				
Production String				
Liner	3.5"	9.3#	5408'	7479'

<<< Fold Here >>>

All interpretations are opinions based on inferences from electrical or other measurements and we cannot and do not guarantee the accuracy or correctness of any interpretation, and we shall not, except in the case of gross or willful negligence on our part, be liable or responsible for any loss, costs, damages, or expenses incurred or sustained by anyone resulting from any interpretation made by any of our officers, agents or employees. These interpretations are also subject to our general terms and conditions set out in our current Price Schedule.

Comments

SO # 2-204140

LOG CORRILATED TO WEATHERFORD LOG
DATED MAY-21-13

PERFS

7110'-7130'

7160'-7200'

7222'-7292' 4 SPF

7314'-7344'

7380'-7400'

Sensor	Offset (ft)	Schematic	Description	Len (ft)	OD (in)	Wt (lb)
CCL	19.32		CCL-168tekco (001) TFKCO 1 11/16" 450 Deg F CCL	1.67	1.69	9.00

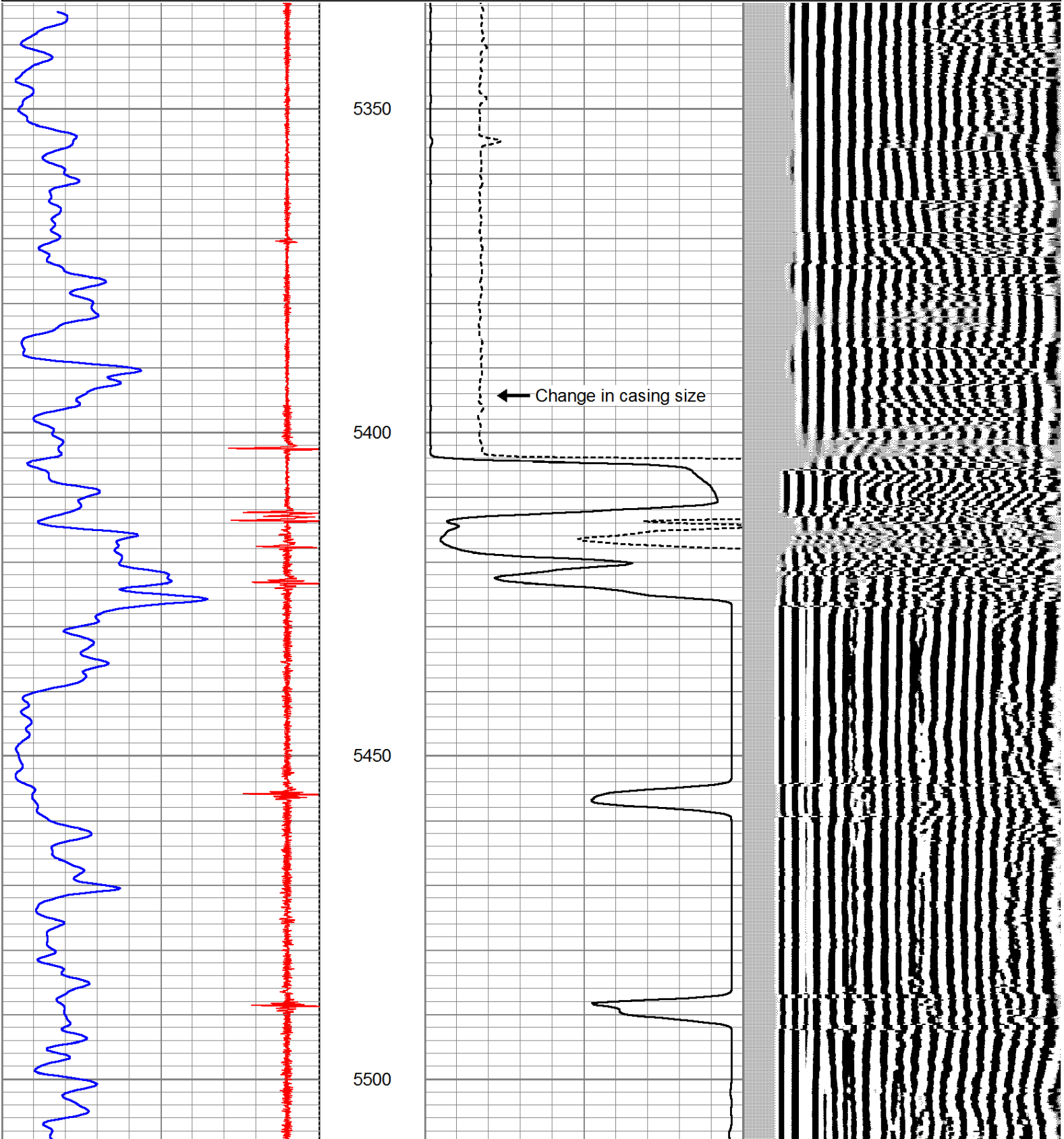
			1.69 1 11/16" Tekco Adjustable Centralizer	2.21	1.69	10.00
TEMP	12.53					
WVFCAL	11.87					
WVFS1	11.12		SCBLTEKSLIM-T169Temp (ICRZ9-03) Tekco 1 11/16" 400 Deg F Sector with Temp	10.48	1.69	53.00
WVFS2	11.12					
WVFS3	11.12					
WVFS4	11.12					
WVFS5	11.12					
WVFS6	11.12					
WVF3FT	10.37					
WVF5FT	9.37					
WVFTEMP	6.03					
			1.69 1 11/16" Tekco Adjustable Centralizer	2.21	1.69	10.00
			GR-Tek-Co (011) TEKCO 1 11/16" 400 Deg. F Scintillation Logging Gamma Ray	3.82	1.68	18.00
GR	1.00					
Dataset: smoker 22-11 #1 swd.db: field/well/run1/pass13 Total Length: 20.39 ft Total Weight: 100.00 lb O.D. 1.69 in						

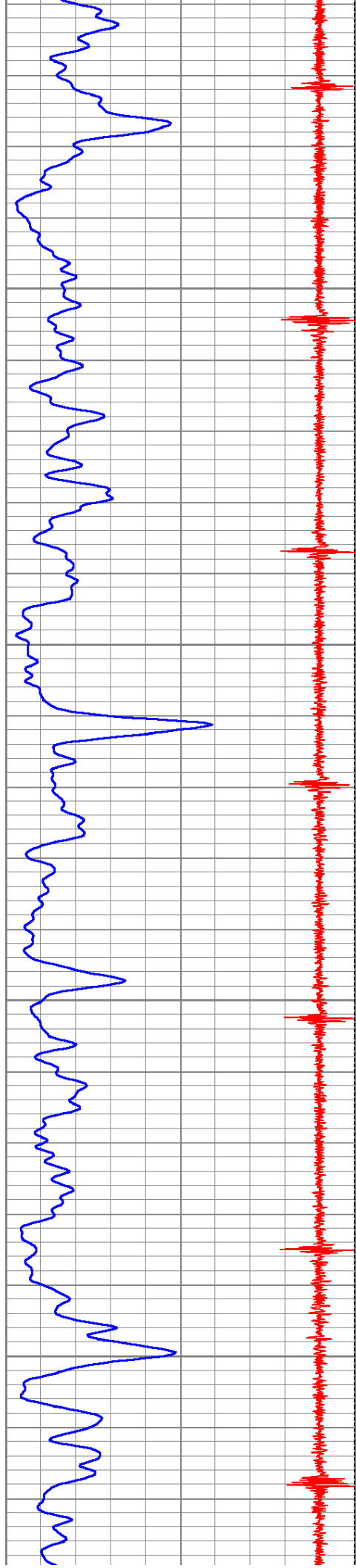


Through liner ton no press

Database File: smoker 22-11 #1 swd.db
Dataset Pathname: pass13
Presentation Format: cbl_dr
Dataset Creation: Fri May 31 12:00:21 2013 by Log SCH 120126
Charted by: Depth in Feet scaled 1:240

9	Collar Locator	-1	LTEN	0	Amplified Amplitude (mV)	10	200	Variable Density	1200
0	Gamma Ray	200	0 (lb)2000	0	Amplitude (mV)	100			



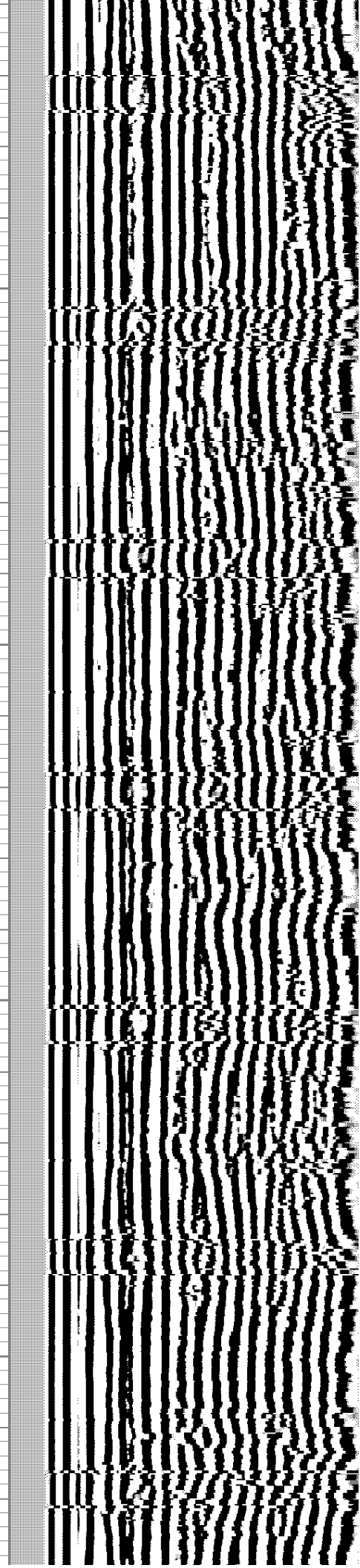
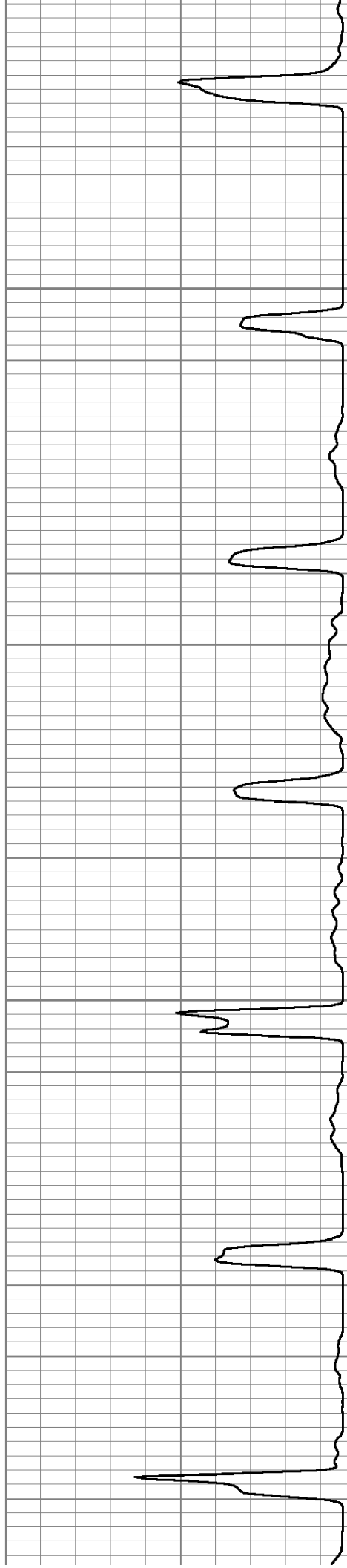


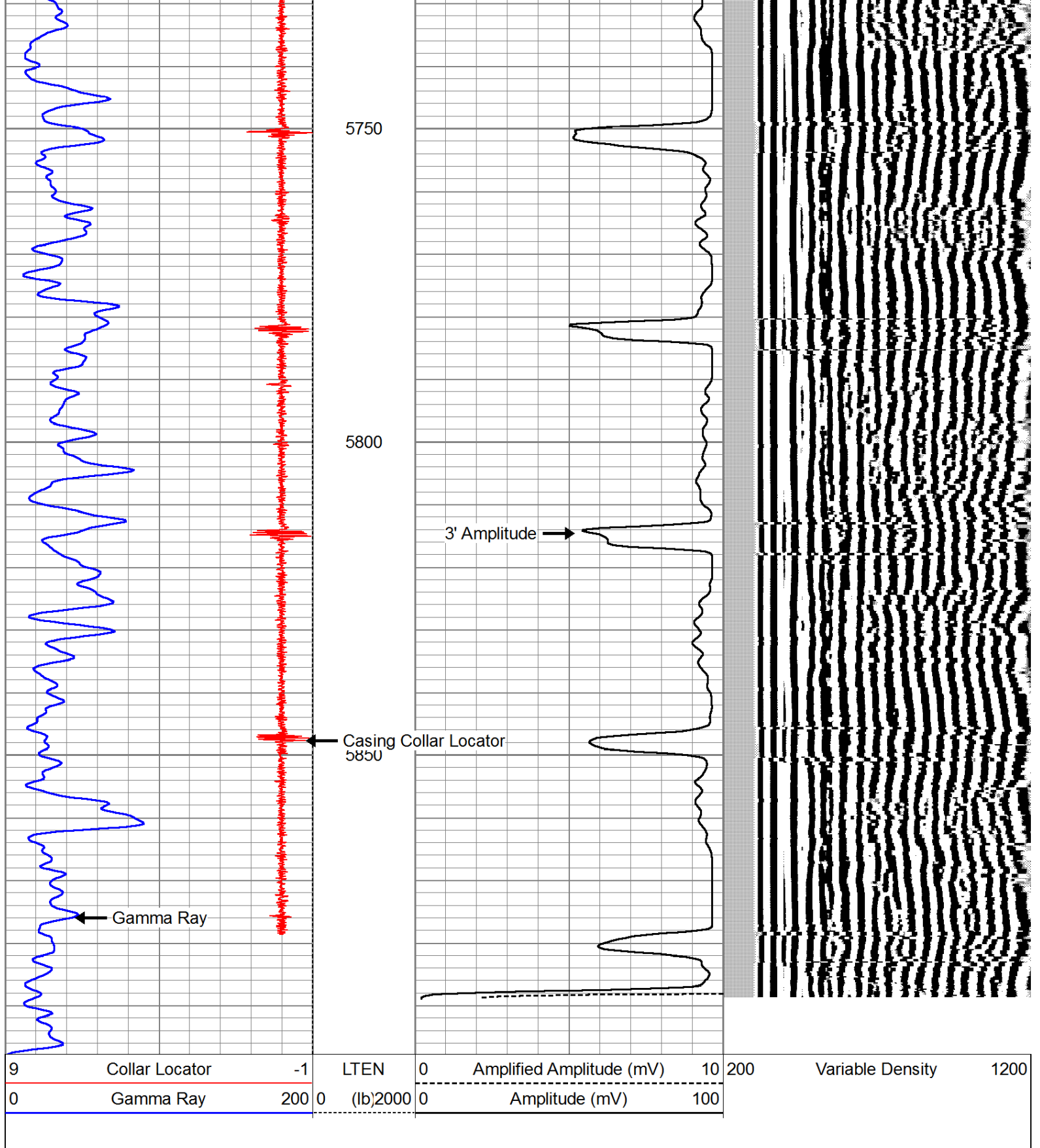
5550

5600

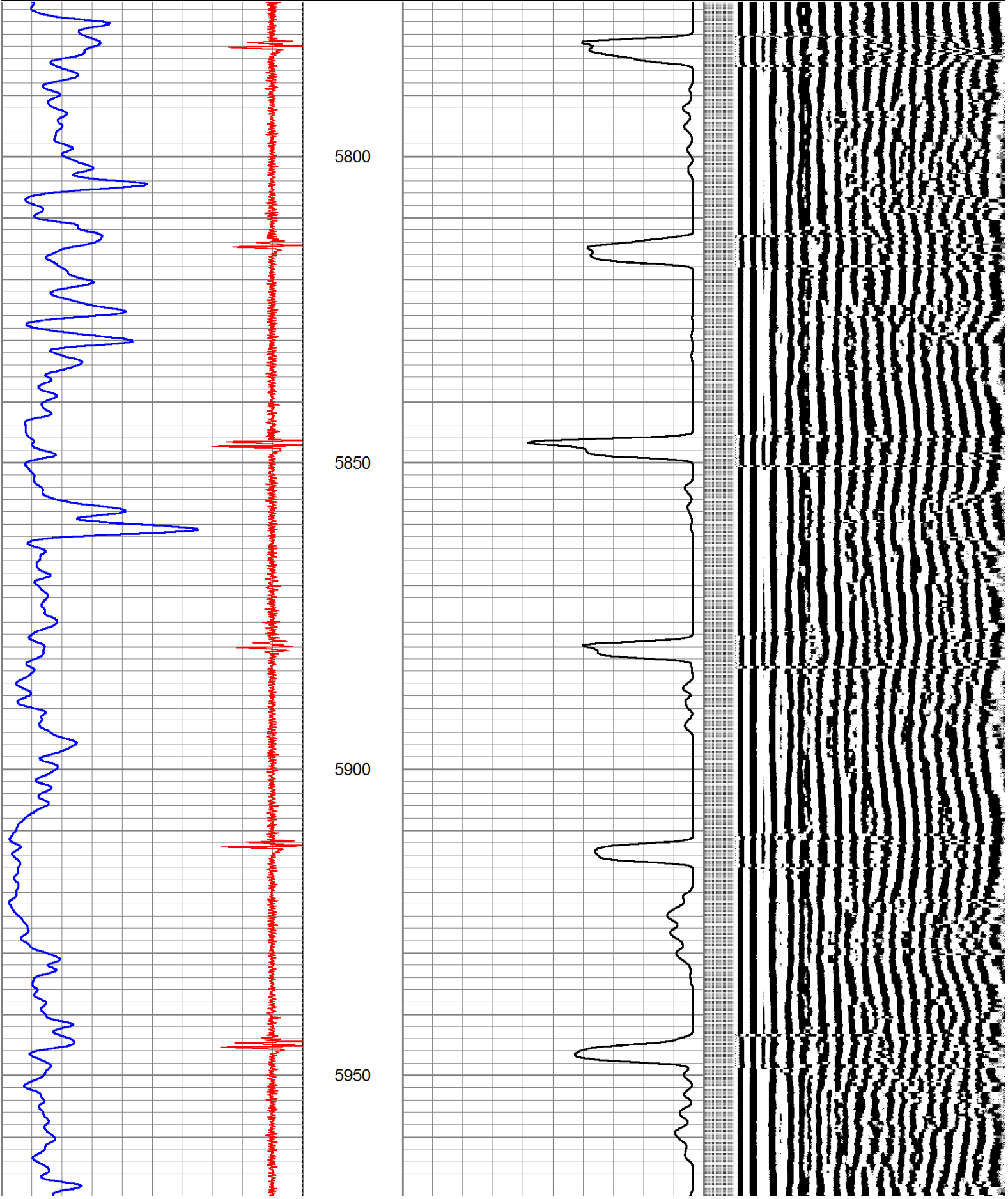
5650

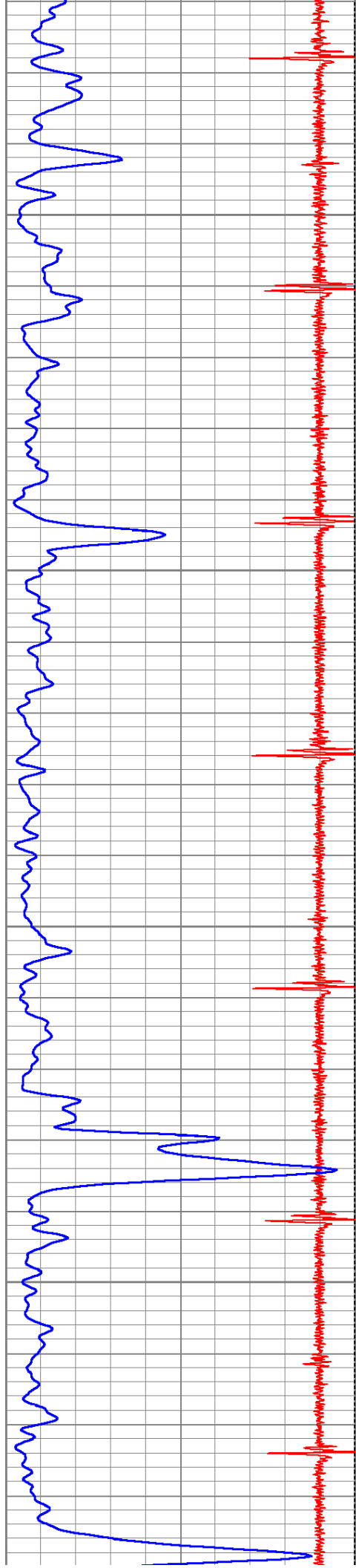
5700





Dataset Creation:		Fri May 31 10:57:19 2013 by Log SCH 120126							
Charted by:		Depth in Feet scaled 1:240							
9	Collar Locator	-1	LTEN	0	Amplified Amplitude (mV)	10	200	Variable Density	1200
0	Gamma Ray	200	0 (lb)2000	0	Amplitude (mV)	100			



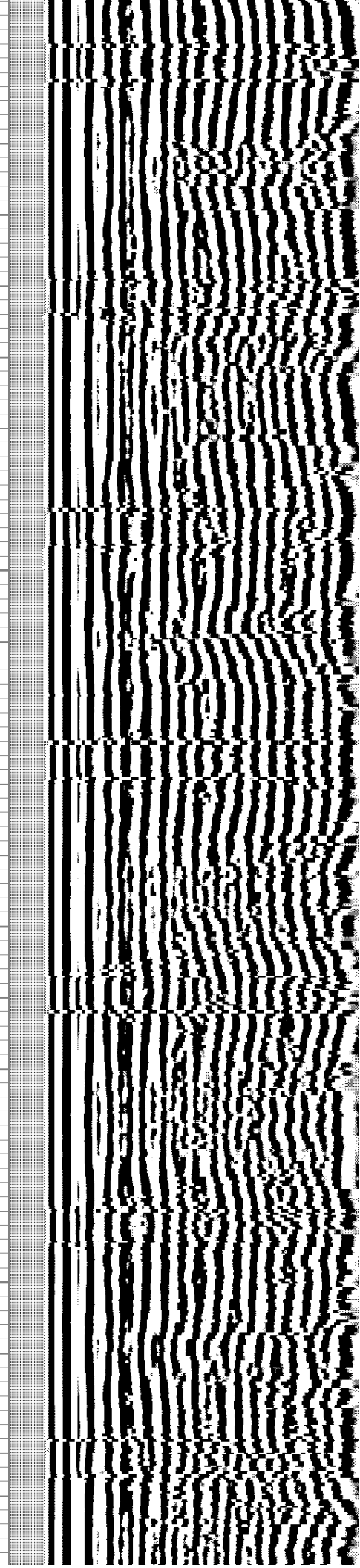
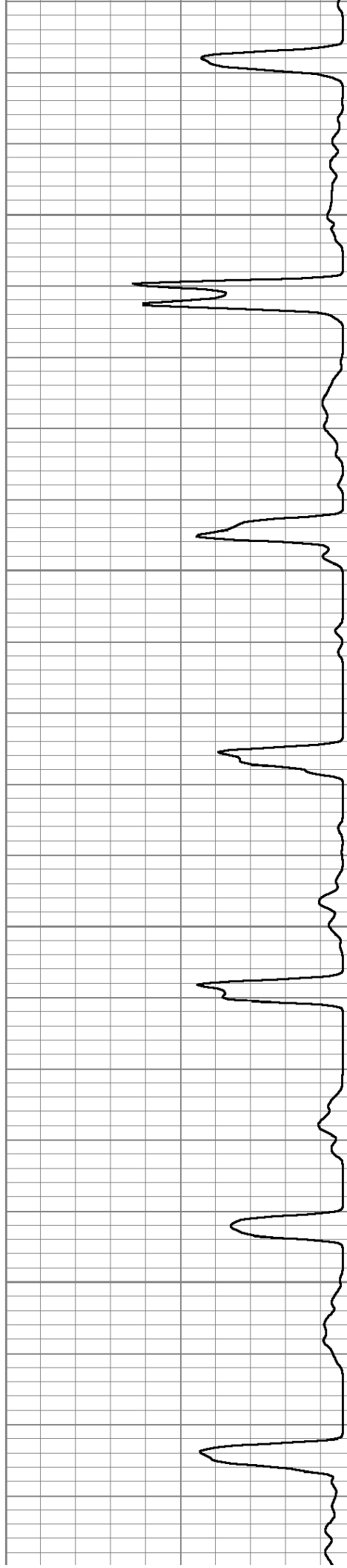


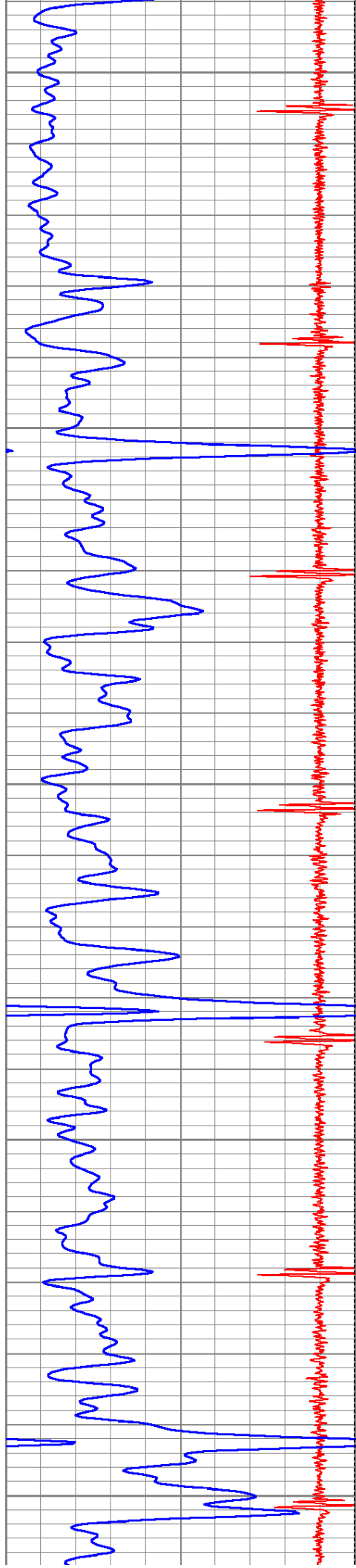
6000

6050

6100

6150





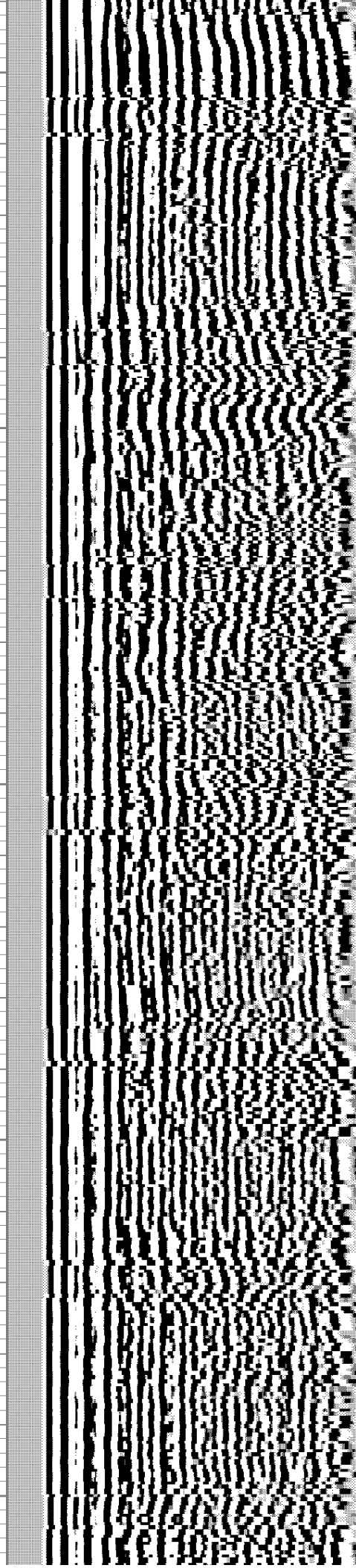
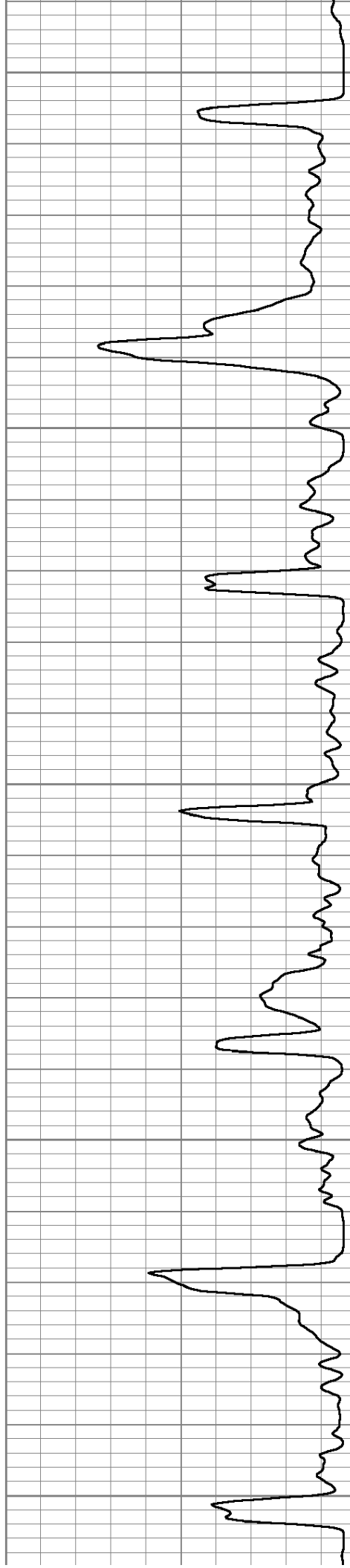
6200

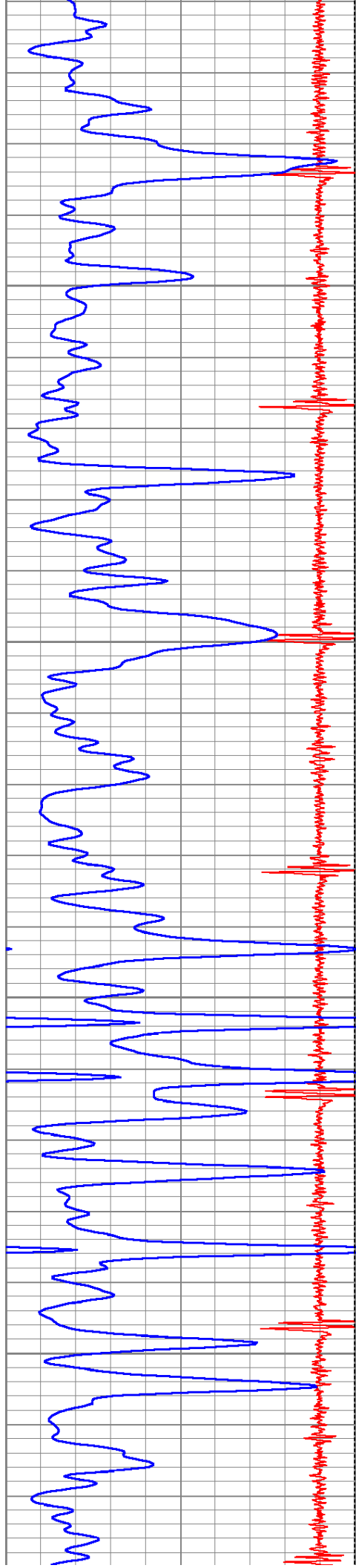
6250

6300

6350

6400



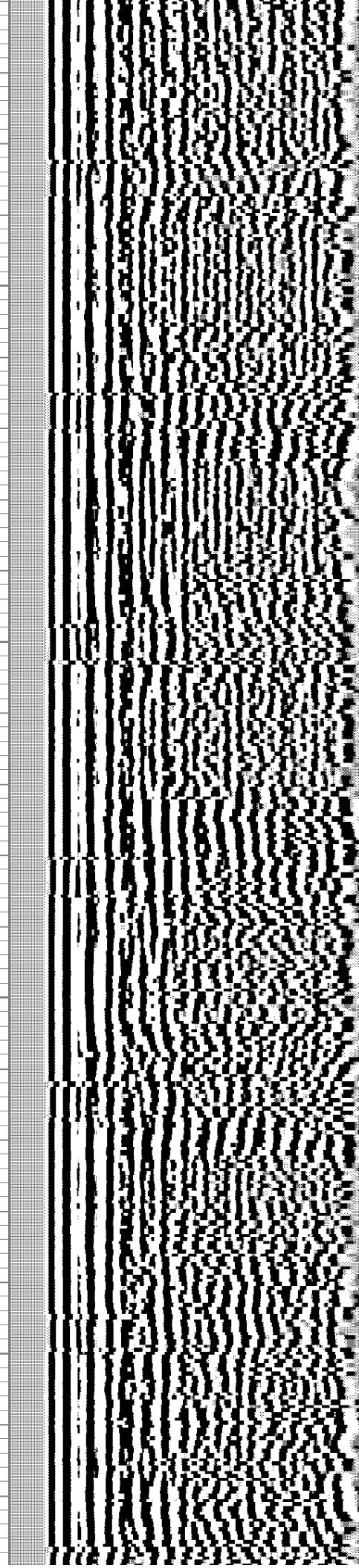
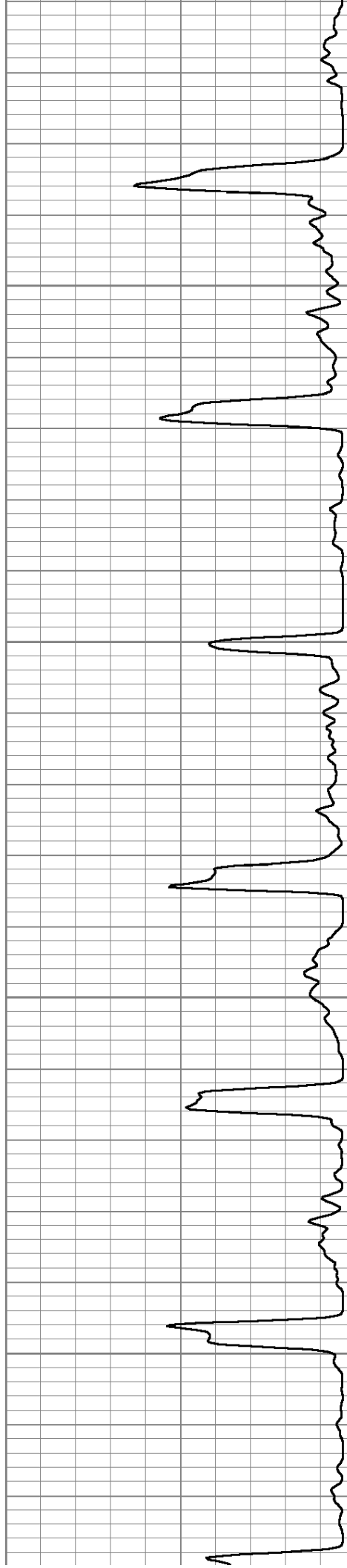


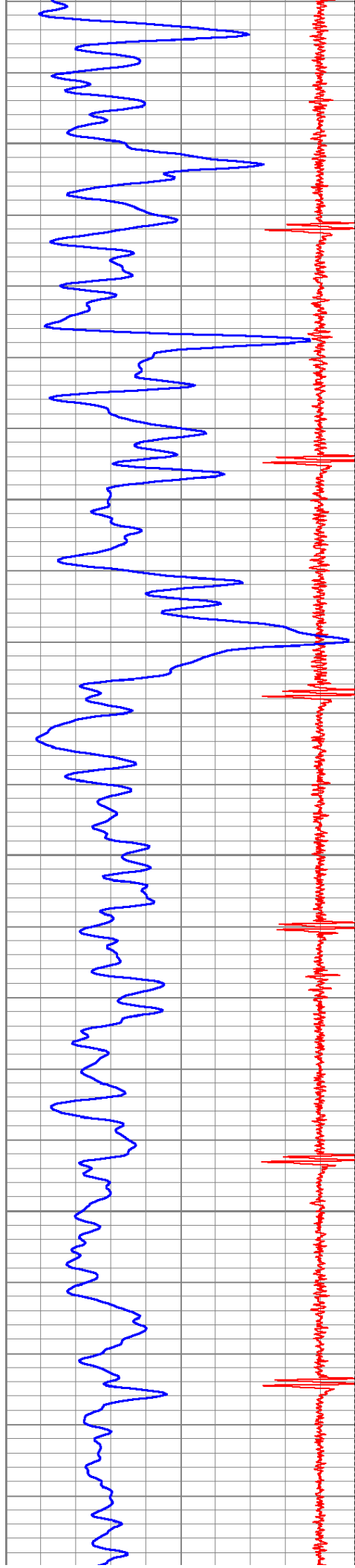
6450

6500

6550

6600





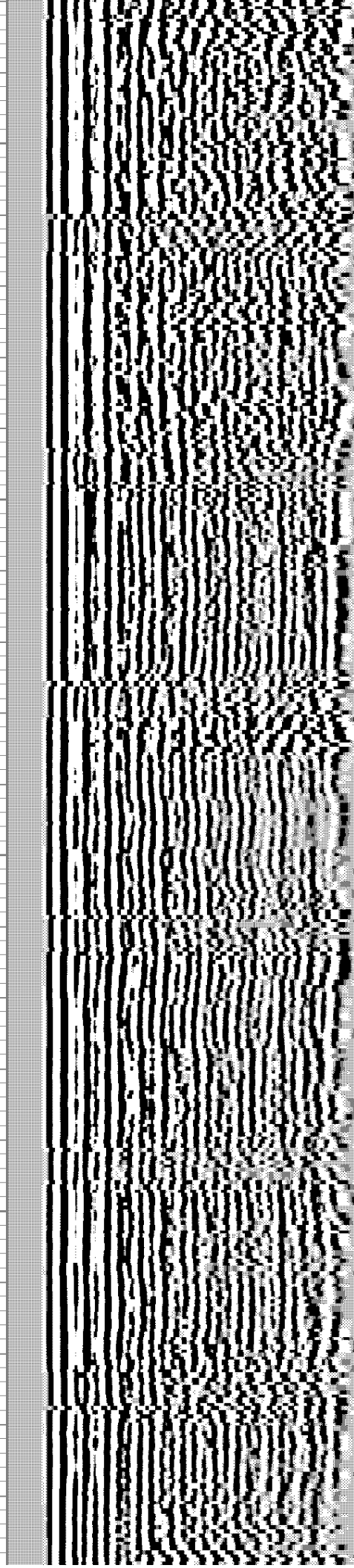
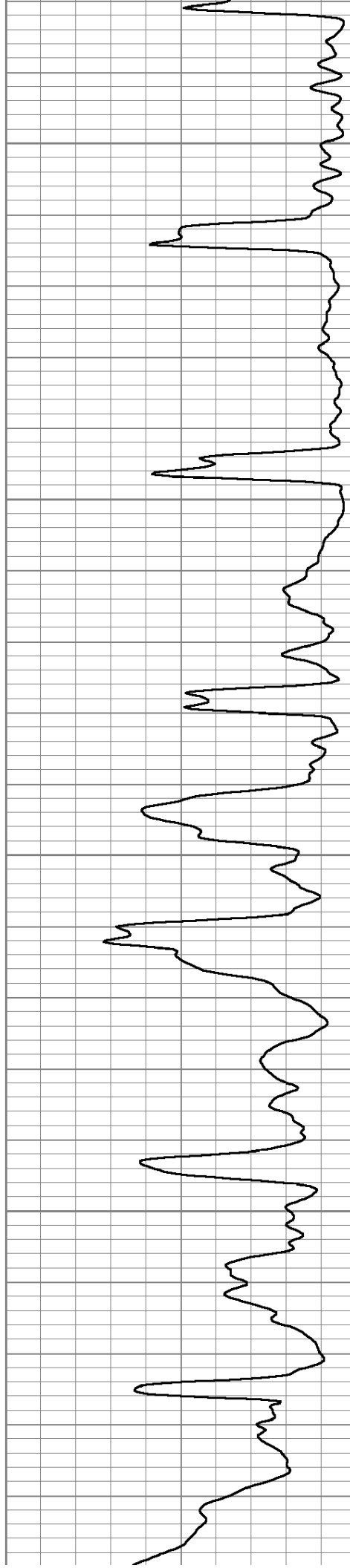
6650

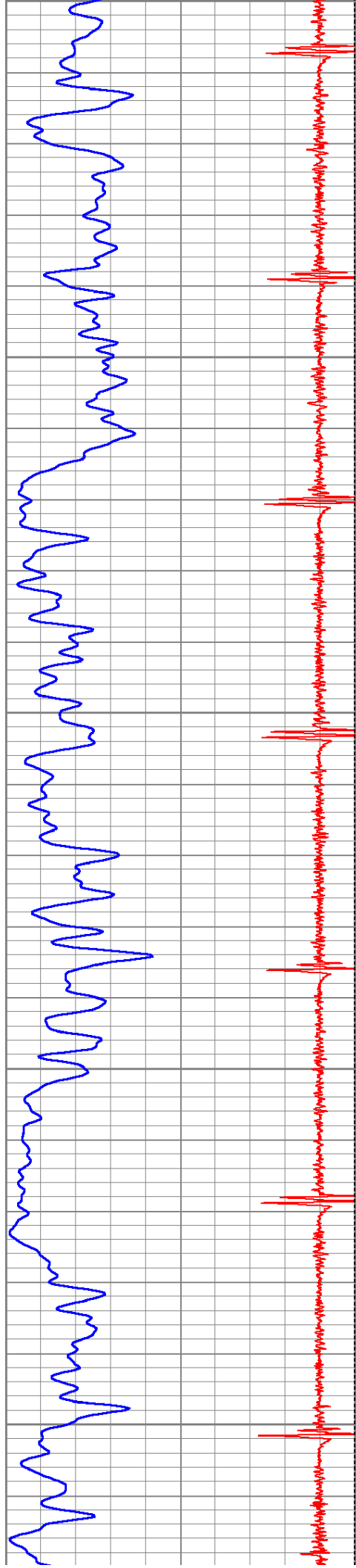
6700

6750

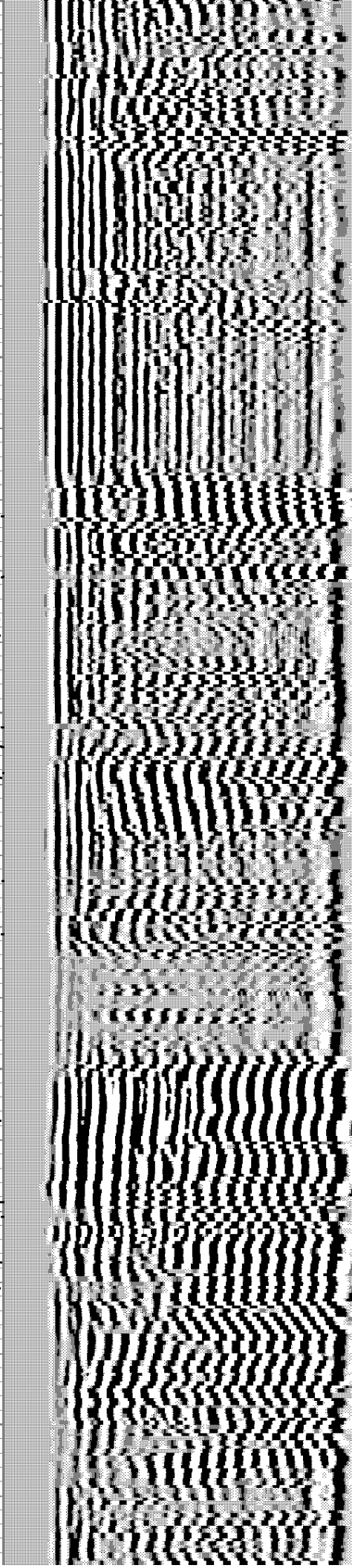
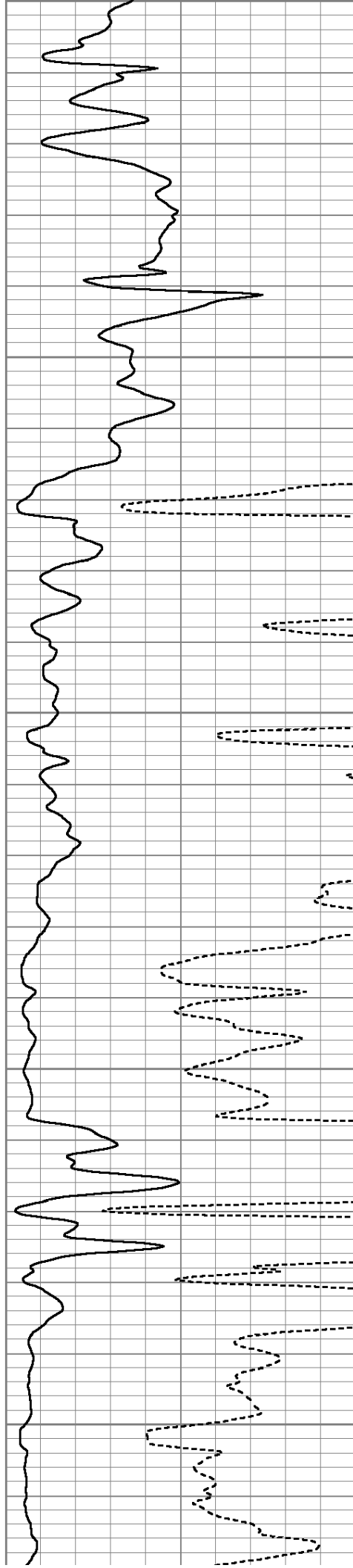
6800

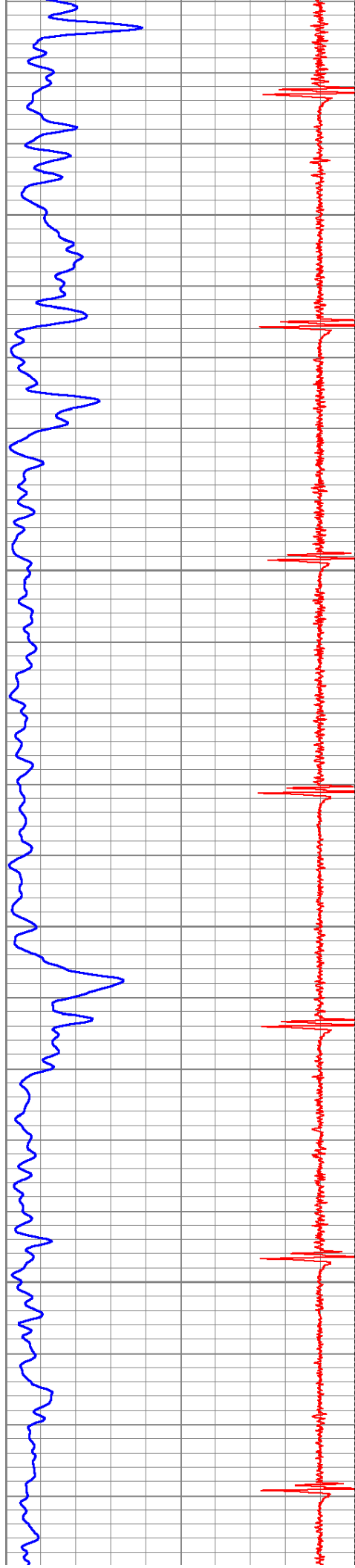
6850





6850
6900
6950
7000
7050



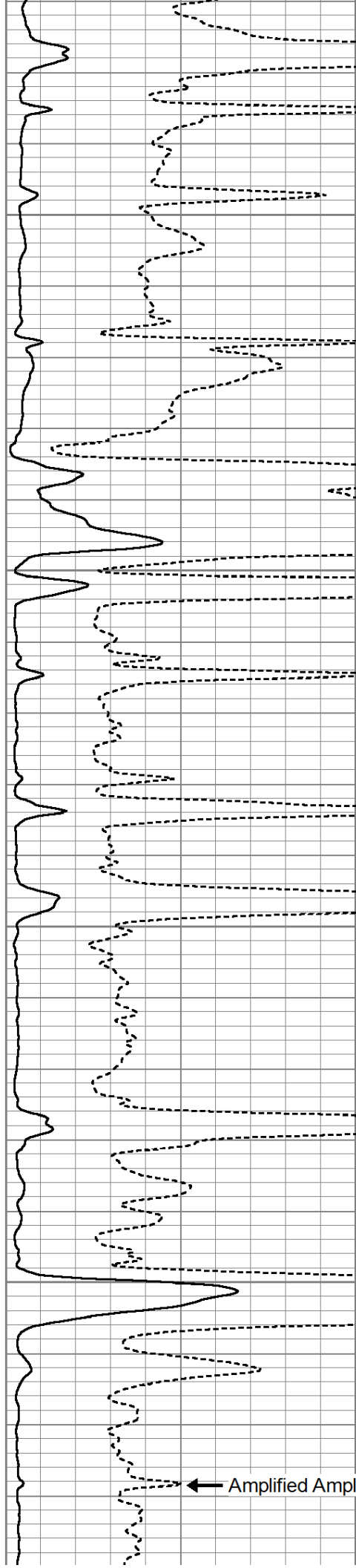


7100

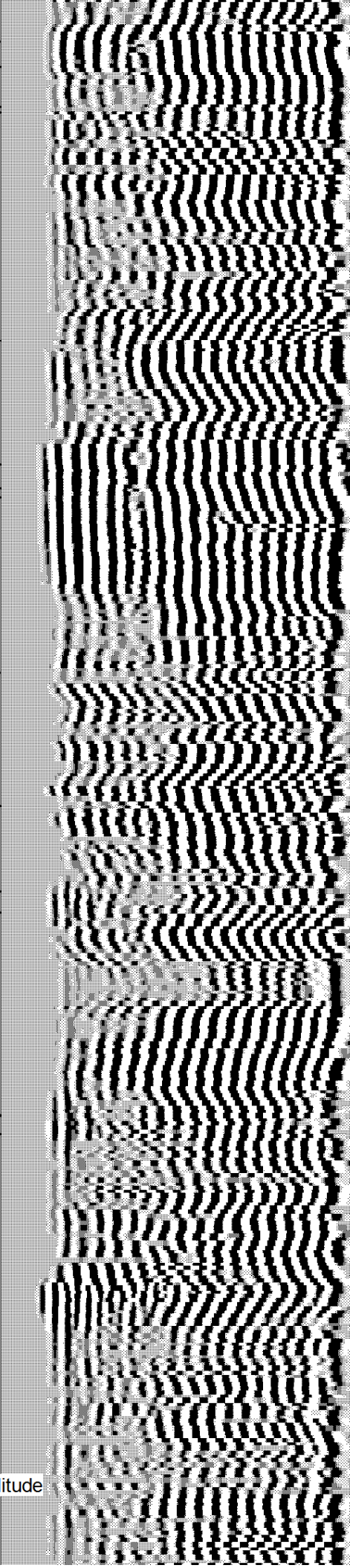
7150

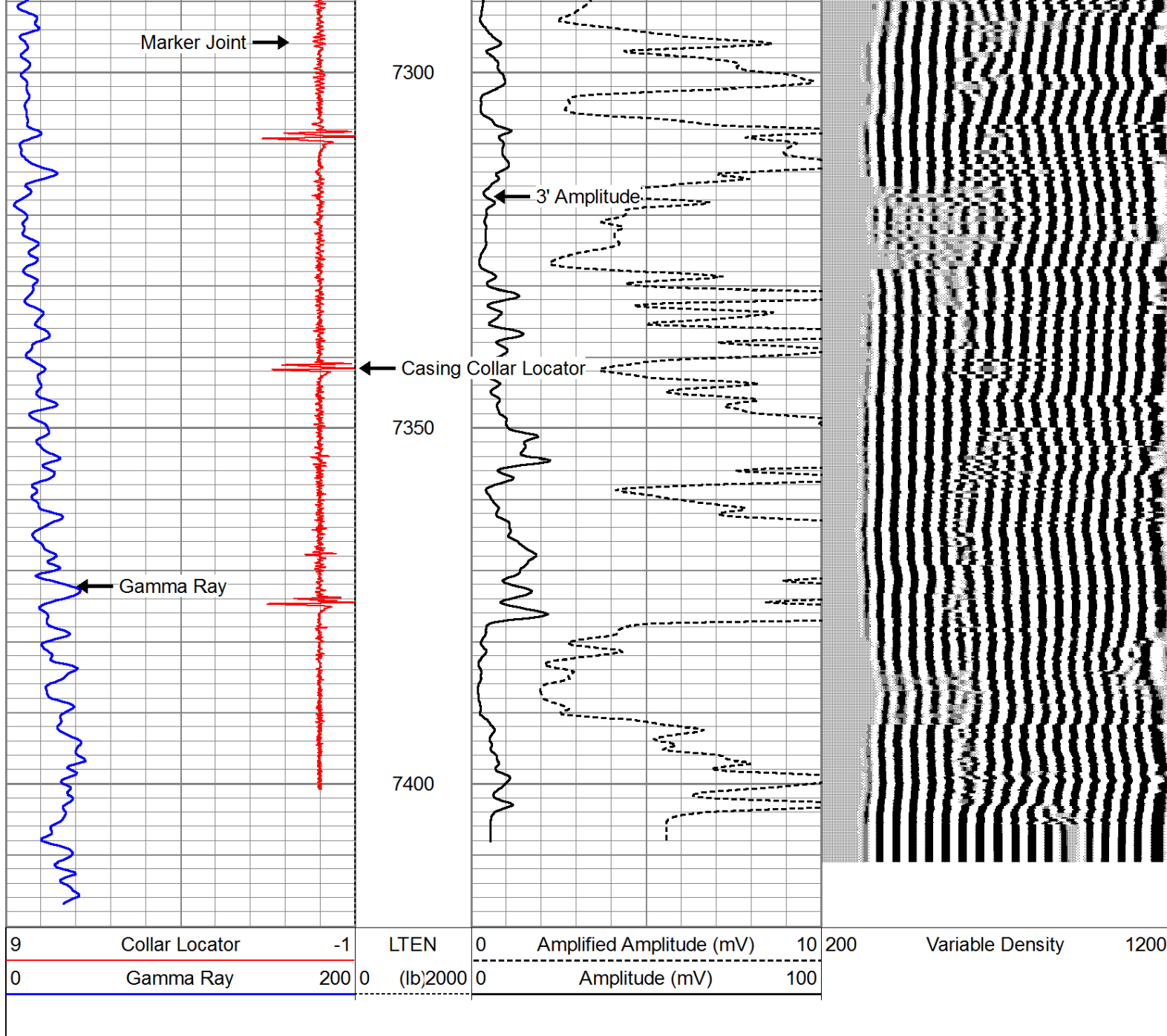
7200

7250



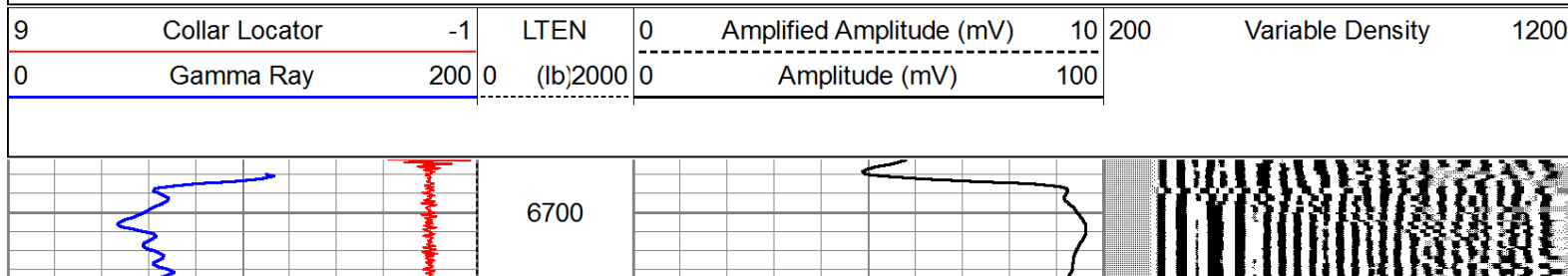
Amplified Amplitude

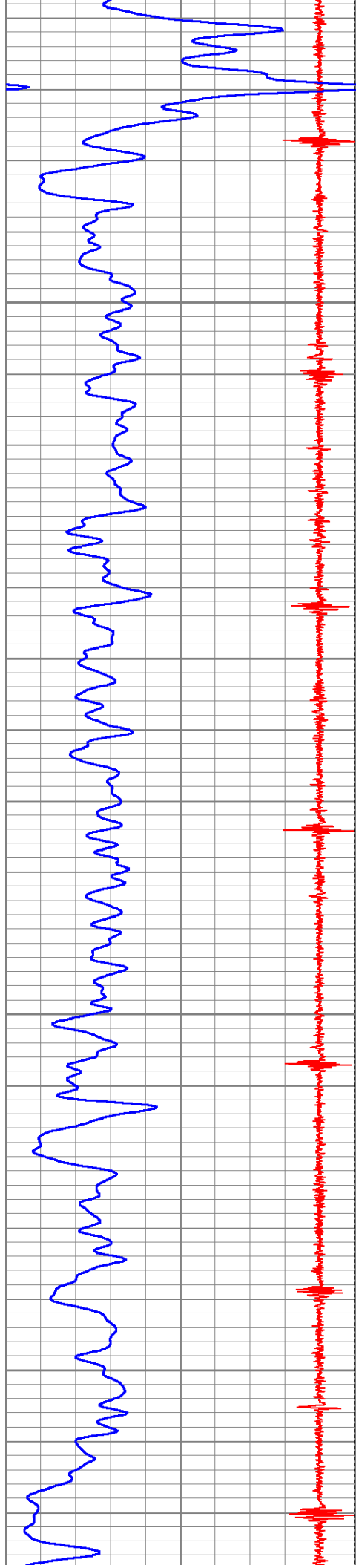




logged under 500# pressure

Database File: smoker 22-11 #1 swd.db
 Dataset Pathname: pass12
 Presentation Format: cbl_dr
 Dataset Creation: Fri May 31 11:13:19 2013 by Log SCH 120126
 Charted by: Depth in Feet scaled 1:240



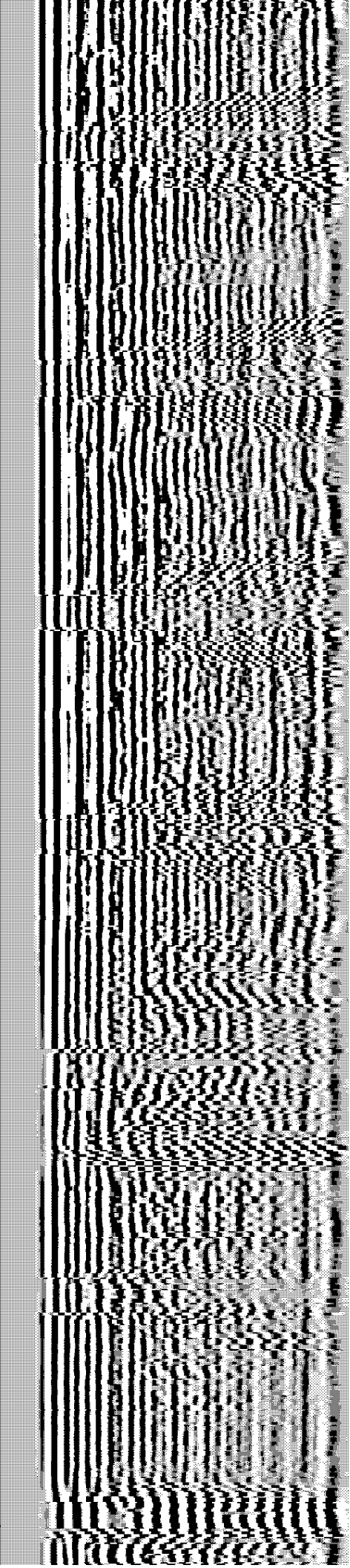
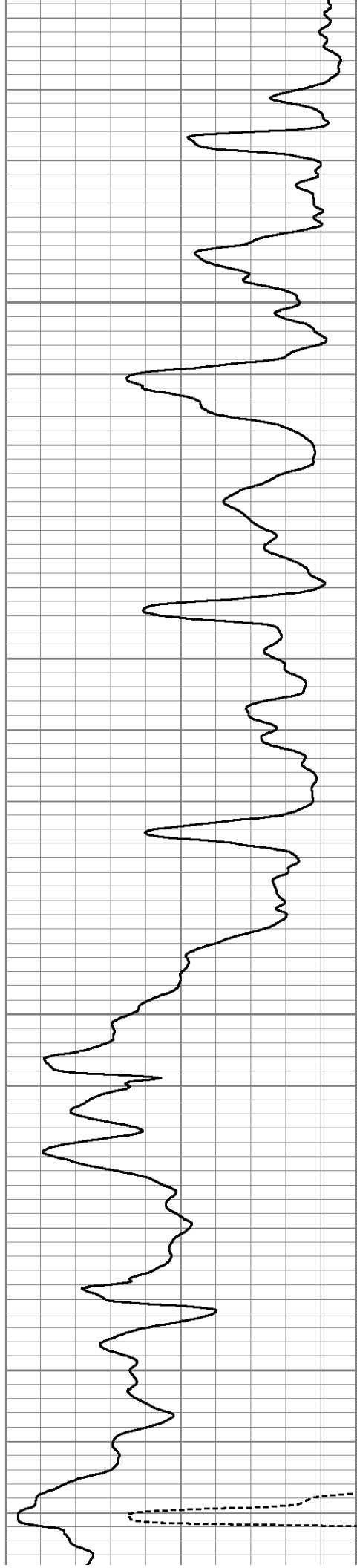


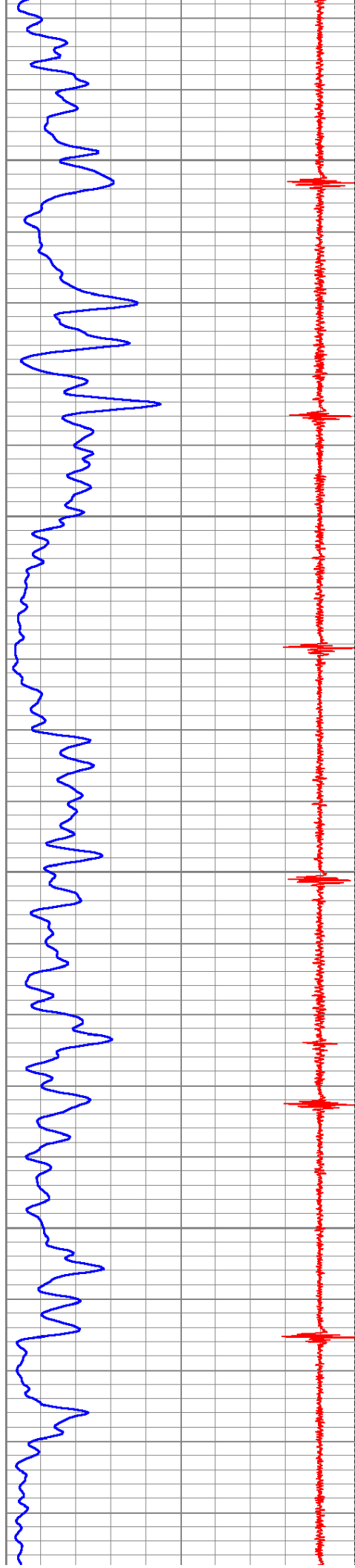
6750

6800

6850

6900



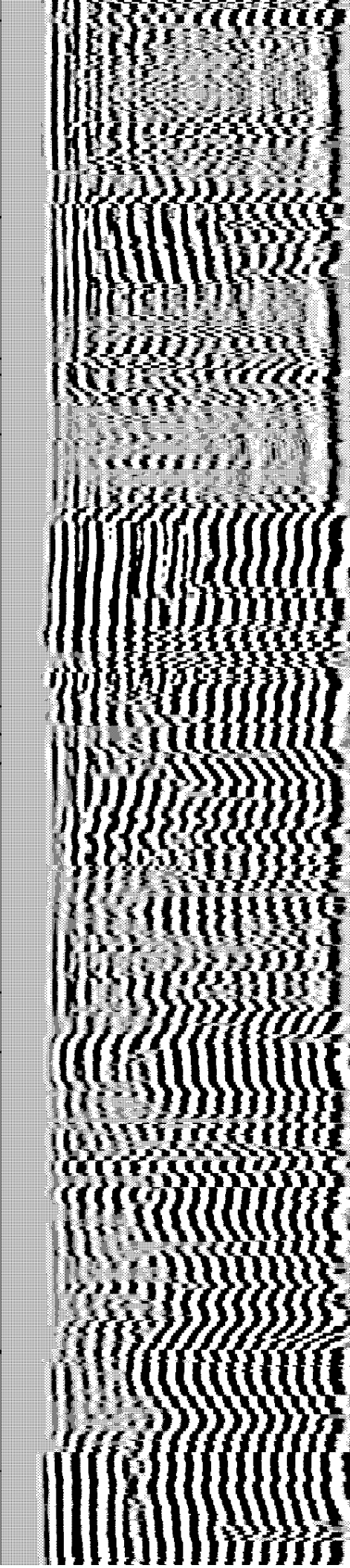
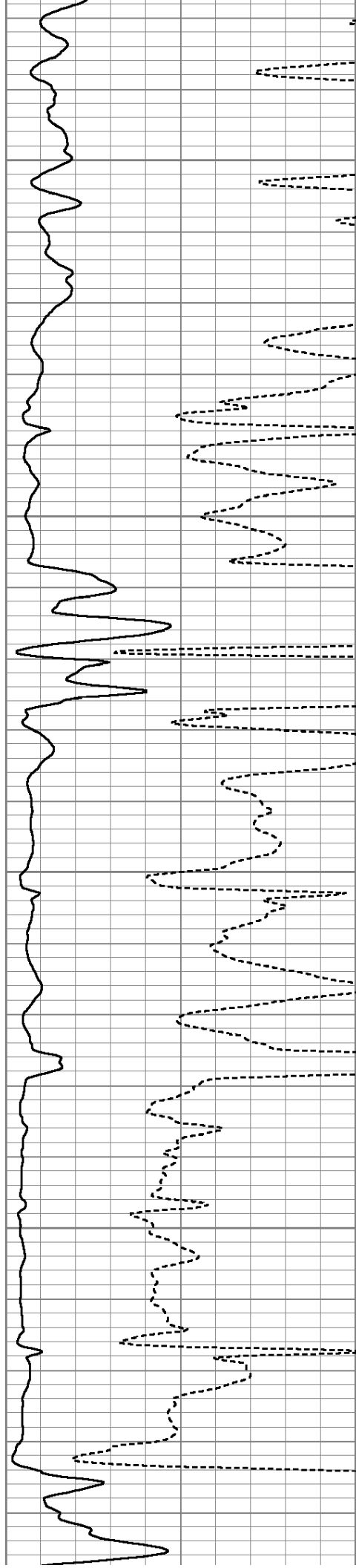


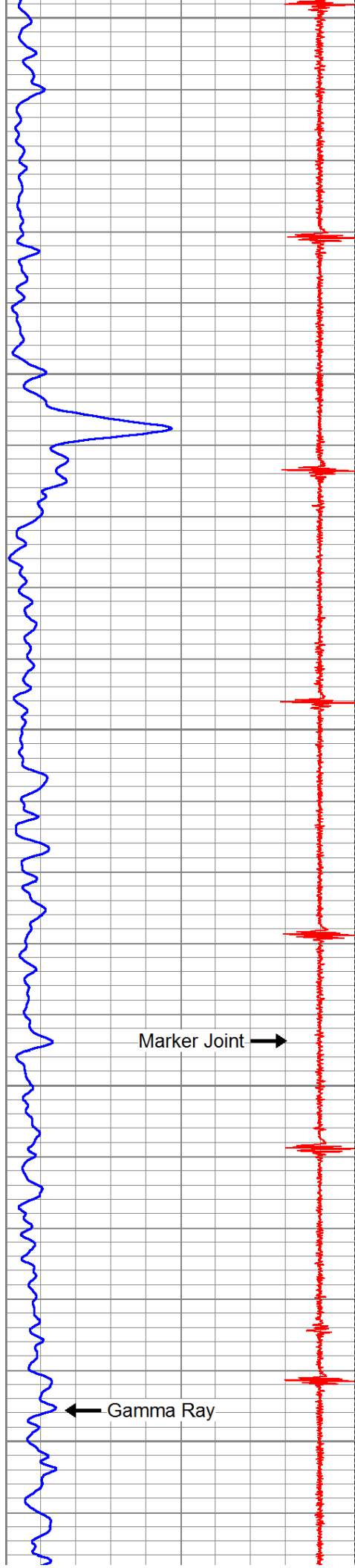
6950

7000

7050

7100





7150

7200

7250

7300

7350

