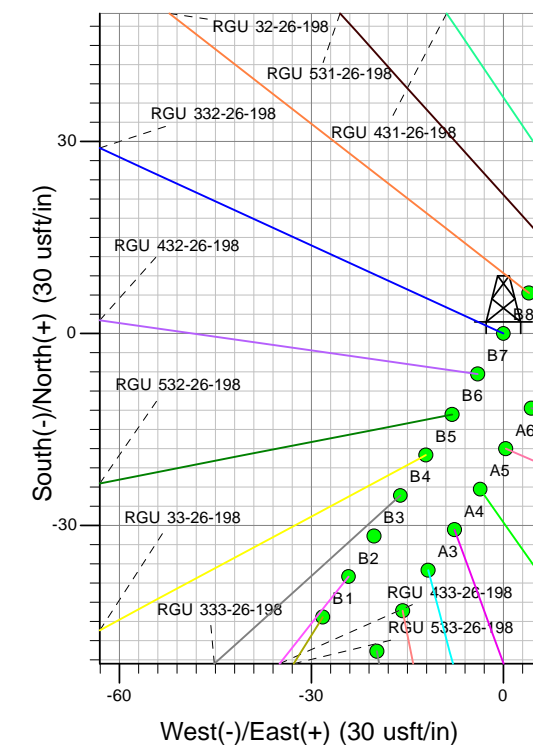
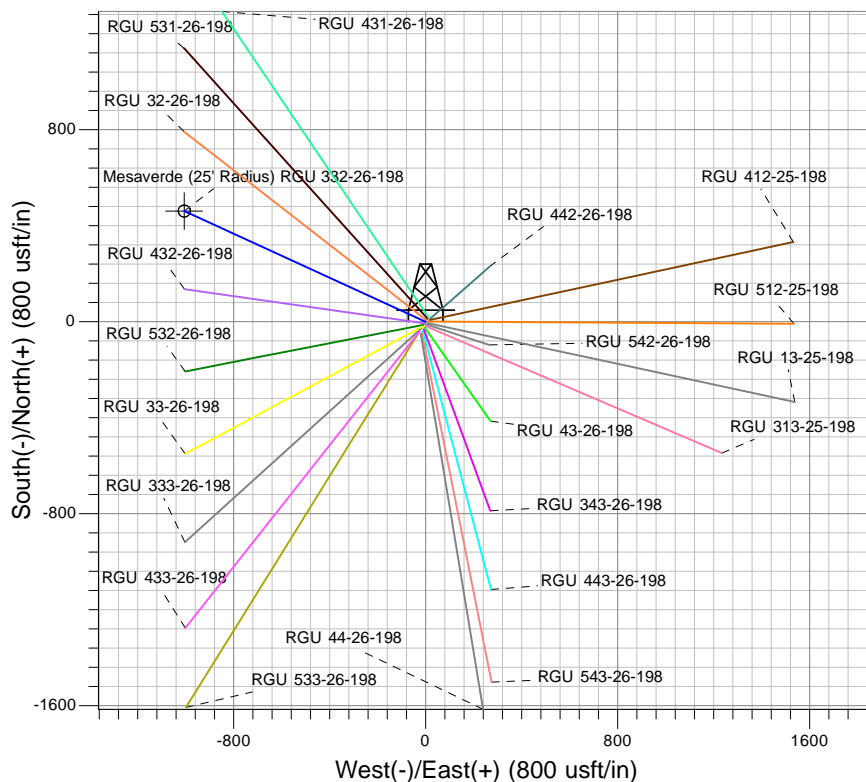
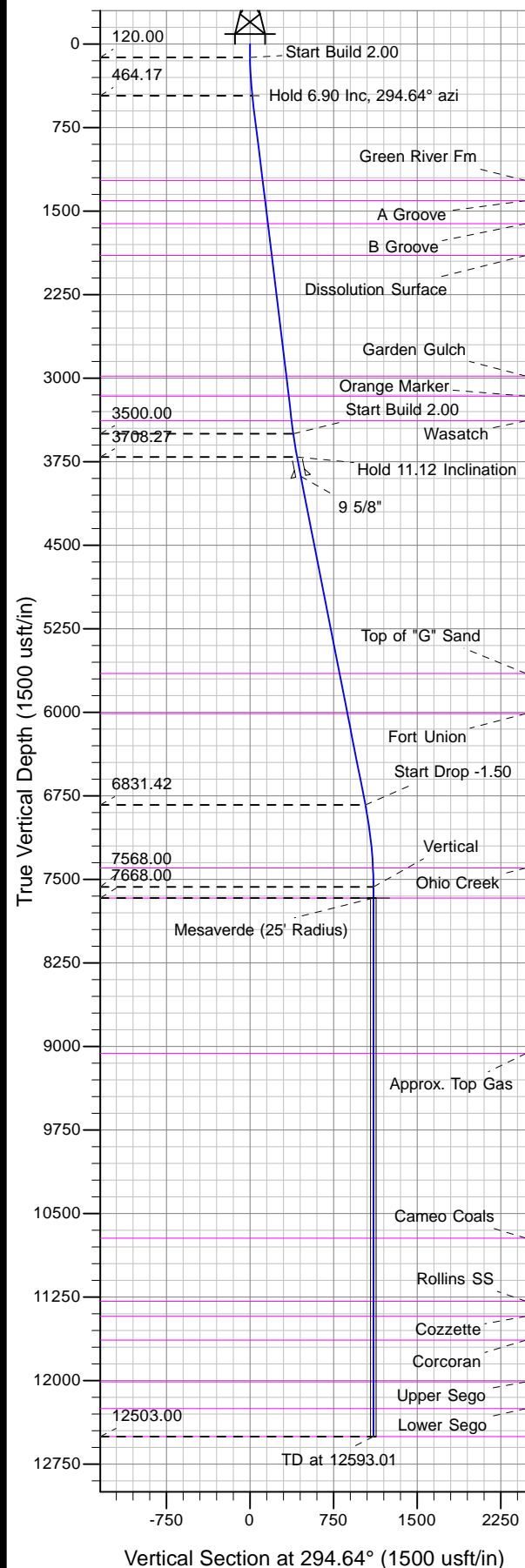




Well Name: RGU 332-26-198
Surface Location: RGU 42-26-198
North American Datum 1983 , US State Plane 1983 , Colorado Central Zone
Ground Elevation: 6622.00
+N/-S 0.00 +E/-W 0.00 Northing 1778103.30 Easting 2199603.00 Latitude 39.93519 Longitude -108.35455 Slot B8
KELLY BUSHING @ 6643.00usft (Cyclone 29 (21' RKB) kjs)



Project: RG 26-01S-098W
Site: RGU 42-26-198
Well: RGU 332-26-198
Design #1 24Jan13 kjs



Azimuths to True North
Magnetic North: 10.36°
Magnetic Field
Strength: 52273.7nT
Dip Angle: 65.99°
Date: 1/24/2013
Model: IGRF2010

ANNOTATIONS

MD	Inc	Azi	TVD	+N/-S	+E/-W	Vsect	Departure	Annotation
120.00	0.00	0.00	120.00	0.00	0.00	0.00	0.00	Start Build 2.00
465.00	6.90	294.64	464.17	8.65	-18.86	20.75	20.75	Hold 6.90 Inc, 294.64° azi
3522.98	6.90	294.64	3500.00	161.85	-352.77	388.12	388.12	Start Build 2.00
3733.90	11.12	294.64	3708.27	175.61	-382.78	421.15	421.15	Hold 11.12 Inclination
6916.79	11.12	294.64	6831.42	431.54	-940.65	1034.92	1034.92	Start Drop -1.50
7658.01	0.00	0.00	7568.00	461.44	-1005.82	1106.61	1106.61	Vertical
7758.01	0.00	0.00	7668.00	461.44	-1005.82	1106.61	1106.61	Mesaverde
12593.01	0.00	0.00	12503.00	461.44	-1005.82	1106.61	1106.61	TD at 12593.01