
WPX ENERGY ROCKY MOUNTAIN LLC-EBUS

PA 423-4
PARACHUTE
Garfield County , Colorado

Cement Surface Casing

26-Jan-2013

Job Site Documents

NOTES PARACH	RIG: 577
DATE 1-26-2013	
PA 423-4	
SG 80-4	
8300-8400/8300-8891	
Ron Tonges	
SIGNATURE: <i>Ron Tonges</i>	

The Road to Excellence Starts with Safety

Sold To #: 300721		Ship To #: 2973229		Quote #:		Sales Order #: 900121747	
Customer: WPX ENERGY ROCKY MOUNTAIN LLC-EBUS				Customer Rep: Towers, Ron			
Well Name: PA			Well #: 423-4		API/UWI #: 05-045-20066		
Field: PARACHUTE		City (SAP): PARACHUTE		County/Parish: Garfield		State: Colorado	
Lat: N 39.464 deg. OR N 39 deg. 27 min. 48.719 secs.				Long: W 108.007 deg. OR W -109 deg. 59 min. 35.124 secs.			
Contractor: NABORS 577			Rig/Platform Name/Num: NABORS 577				
Job Purpose: Cement Surface Casing							
Well Type: Development Well			Job Type: Cement Surface Casing				
Sales Person: MAYO, MARK			Srvc Supervisor: SLAUGHTER, JESSE		MBU ID Emp #: 454315		

Job Personnel

HES Emp Name	Exp Hrs	Emp #	HES Emp Name	Exp Hrs	Emp #	HES Emp Name	Exp Hrs	Emp #
BURKE, BRENDAN Patrick	6	487782	KAMMEIER, CHRISTOPHER Michael	6	524554	ROMKEE, DALE Alan	6	488215
SLAUGHTER, JESSE Dean	6	454315						

Equipment

HES Unit #	Distance-1 way	HES Unit #	Distance-1 way	HES Unit #	Distance-1 way	HES Unit #	Distance-1 way
10867531	60 mile	10872429	60 mile	10897925	60 mile	11259885	60 mile
11808847	60 mile						

Job Hours

Date	On Location Hours	Operating Hours	Date	On Location Hours	Operating Hours	Date	On Location Hours	Operating Hours
1-26-2013	6	3						
TOTAL			Total is the sum of each column separately					

Job

Formation Name				Job Times			
Formation Depth (MD)	Top	Bottom		Date	Time	Time Zone	
Form Type		BHST		Called Out	26 - Jan - 2013	03:00	MST
Job depth MD	761. ft	Job Depth TVD	761. ft	On Location	26 - Jan - 2013	07:00	MST
Water Depth		Wk Ht Above Floor	5. ft	Job Started	26 - Jan - 2013	10:57	MST
Perforation Depth (MD)	From	To		Job Completed	26 - Jan - 2013	11:55	MST
				Departed Loc	26 - Jan - 2013	13:00	MST

Well Data

Description	New / Used	Max pressure psig	Size in	ID in	Weight lbm/ft	Thread	Grade	Top MD ft	Bottom MD ft	Top TVD ft	Bottom TVD ft
-------------	---------------	-------------------------	------------	----------	------------------	--------	-------	--------------	--------------------	------------------	---------------------

Sales/Rental/3rd Party (HES)

Description	Qty	Qty uom	Depth	Supplier
PLUG,CMTG,TOP,9 5/8,HWE,8.16 MIN/9.06 MA	1	EA		

Tools and Accessories

Type	Size	Qty	Make	Depth	Type	Size	Qty	Make	Depth	Type	Size	Qty	Make
Guide Shoe					Packer					Top Plug	9.625	1	HES
Float Shoe					Bridge Plug					Bottom Plug			
Float Collar					Retainer					SSR plug set			
Insert Float										Plug Container	9.625	1	HES
Stage Tool										Centralizers			

Miscellaneous Materials

Gelling Agt		Conc		Surfactant		Conc		Acid Type		Qty		Conc	%
Treatment Fld		Conc		Inhibitor		Conc		Sand Type		Size		Qty	

Fluid Data

Stage/Plug #: 1													
Fluid #	Stage Type	Fluid Name			Qty	Qty uom	Mixing Density lbm/gal	Yield ft3/sk	Mix Fluid Gal/sk	Rate bbl/min	Total Mix Fluid Gal/sk		

1	Water Spacer	FRESH WATER	20.00	bbl	8.33	.0	.0	4	
2	Tail Cement	VERSACEM (TM) SYSTEM (452010)	225.0	sacks	12.8	2.11	11.75	6	11.75
3	Displacement	FRESH WATER	56.4	bbl	8.33	.0	.0	10	
Calculated Values			Pressures		Volumes				
Displacement	56.4	Shut In: Instant		Lost Returns	NO	Cement Slurry	84.6	Pad	
Top Of Cement	SURFACE	5 Min		Cement Returns	30	Actual Displacement	56.4	Treatment	
Frac Gradient		15 Min		Spacers	20	Load and Breakdown		Total Job	161
Rates									
Circulating		Mixing	6	Displacement	10	Avg. Job	8		
Cement Left In Pipe	Amount	0 ft	Reason	Shoe Joint					
Frac Ring # 1 @	ID	Frac ring # 2 @	ID	Frac Ring # 3 @	ID	Frac Ring # 4 @	ID		
The Information Stated Herein Is Correct				Customer Representative Signature					

The Road to Excellence Starts with Safety

Sold To #: 300721	Ship To #: 2973229	Quote #:	Sales Order #: 900121747
Customer: WPX ENERGY ROCKY MOUNTAIN LLC-EBUS	Customer Rep: Towers, Ron		
Well Name: PA	Well #: 423-4	API/UWI #: 05-045-20066	
Field: PARACHUTE	City (SAP): PARACHUTE	County/Parish: Garfield	State: Colorado
Legal Description:			
Lat: N 39.464 deg. OR N 39 deg. 27 min. 48.719 secs.		Long: W 108.007 deg. OR W -109 deg. 59 min. 35.124 secs.	
Contractor: NABORS 577	Rig/Platform Name/Num: NABORS 577		
Job Purpose: Cement Surface Casing	Ticket Amount:		
Well Type: Development Well	Job Type: Cement Surface Casing		
Sales Person: MAYO, MARK	Srvc Supervisor: SLAUGHTER, JESSE	MBU ID Emp #: 454315	

Activity Description	Date/Time	Cht #	Rate bbl/ min	Volume bbl		Pressure psig		Comments
				Stage	Total	Tubing	Casing	
Call Out	01/26/2013 03:00							TD 775 FT, TP 761 FT, SHOE 44 FT, CSG 9 5/8 IN 32.3 LB/FT, HOLE 13 1/2 IN, MUD WT 9.3 PPG 80 VISC
Pre-Convoy Safety Meeting	01/26/2013 05:20							WITH ALL HES PERSONNEL
Crew Leave Yard	01/26/2013 05:30							
Arrive At Loc	01/26/2013 07:00							RIG WAS RUNNING CASING UPON HES ARRIVAL
Assessment Of Location Safety Meeting	01/26/2013 08:30							WITH ALL HES PERSONNEL
Other	01/26/2013 08:40							SPOT EQUIPMENT
Pre-Rig Up Safety Meeting	01/26/2013 08:50							WITH ALL HES PERSONNEL
Rig-Up Equipment	01/26/2013 09:00							
Pre-Job Safety Meeting	01/26/2013 10:45							WITH ALL PERSONNEL ON LOCATION
Start Job	01/26/2013 10:57							
Other	01/26/2013 10:57		2	2			60.0	FILL LINES WITH FRESH WATER
Test Lines	01/26/2013 10:59							TESTED LINES TO 2930 PSI PRESSURE HOLDING
Pump Spacer 1	01/26/2013 11:04		4	20			125.0	FRESH WATER
Pump Tail Cement	01/26/2013 11:16		6	84.6			235.0	225 SKS AT 12.8 PPG, 2.11 FT3/SK, 11.75 GAL/SK
Shutdown	01/26/2013 11:35							

Sold To #: 300721

Ship To #: 2973229

Quote #:

Sales Order #: 900121747

SUMMIT Version: 7.3.0073

Saturday, January 26, 2013 12:20:00

Activity Description	Date/Time	Cht #	Rate bbl/ min	Volume bbl		Pressure psig		Comments
				Stage	Total	Tubing	Casing	
Drop Top Plug	01/26/2013 11:37							PLUG LAUNCHED
Pump Displacement	01/26/2013 11:40		10	46.4			540.0	FRESH WATER
Slow Rate	01/26/2013 11:47		2	10			190.0	SLOW RATE 10 BBLS PRIOR TO CALCULATED DISPLACEMENT
Bump Plug	01/26/2013 11:52		2		56.4		1000. 0	PLUG BUMPED
Check Floats	01/26/2013 11:54							FLOATS HOLDING. HES RETURNED 1 1/2 BBL H2O TO SURFACE
End Job	01/26/2013 11:55							PIPE WAS STATIC DURING JOB, GOOD CIRCULATION THROUGHOUT JOB. HES RETURNED 30 BBL CEMENT TO SURFACE. 20 LB SUGAR USED FOR JOB
Pre-Rig Down Safety Meeting	01/26/2013 12:00							WITH ALL HES PERSONNEL
Rig-Down Equipment	01/26/2013 12:05							
Pre-Convoy Safety Meeting	01/26/2013 12:50							WITH ALL HES PERSONNEL
Crew Leave Location	01/26/2013 13:00							
Comment	01/26/2013 13:01							THANK YOU FOR USING HALLIBURTON CEMENT DEPARTMENT. JESSE SLAUGHTER AND CREW.

Sold To # : 300721

Ship To # :2973229

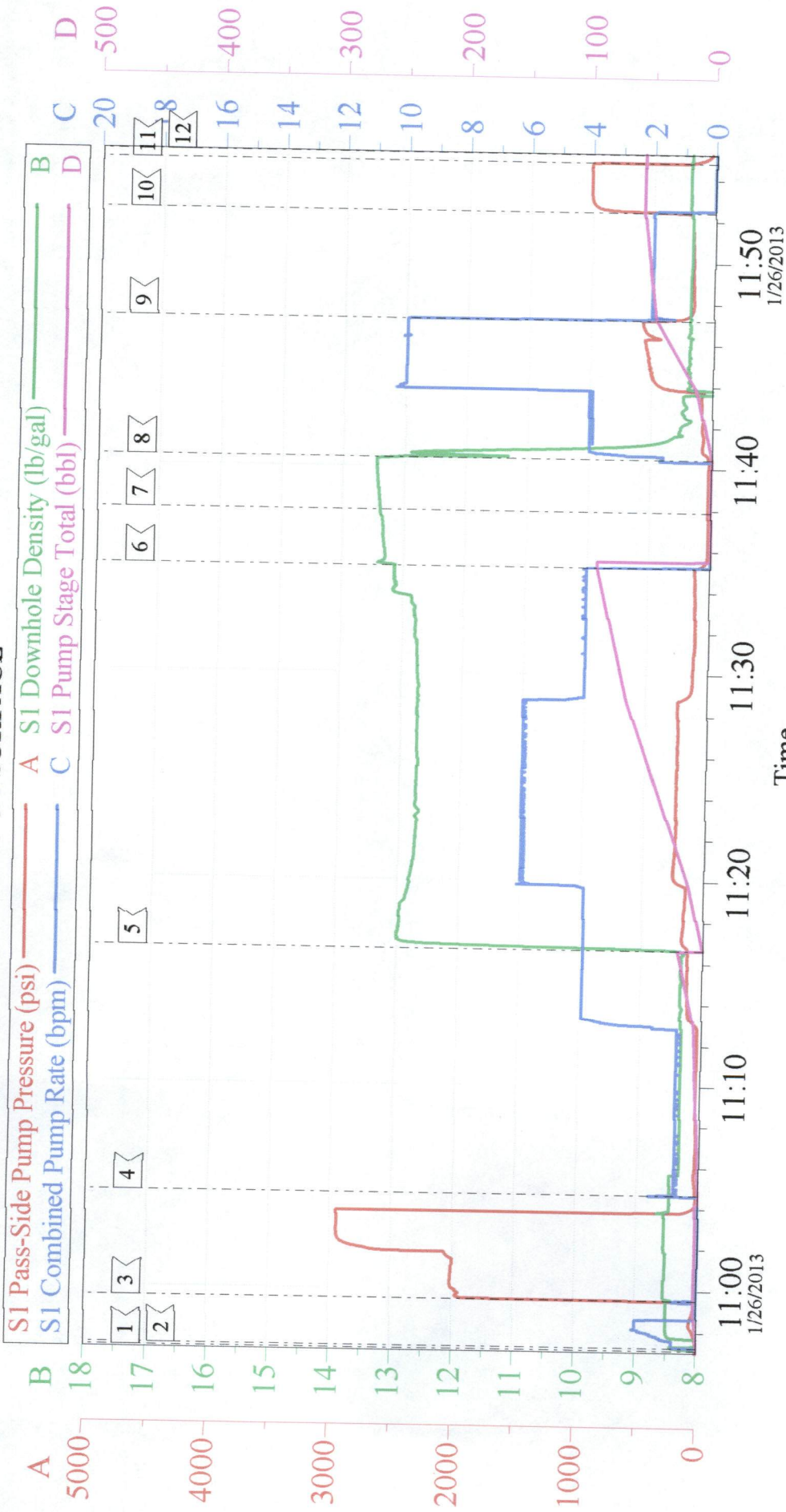
Quote # :

Sales Order # : 900121747

SUMMIT Version: 7.3.0073

Saturday, January 26, 2013 12:20:00

WPX PA 423-4
9 5/8 SURFACE



Local Event Log

1	START JOB	10:57:09	2	PRIME LINES	10:57:17	3	TEST LINES	10:59:32
4	PUMP H2O SPACER	11:04:38	5	PUMP TAIL CEMENT	11:16:38	6	SHUTDOWN	11:35:12
7	DROP TOP PLUG	11:37:54	8	PUMP DISPLACEMENT	11:40:27	9	SLOW RATE	11:47:11
10	BUMP PLUG	11:52:26	11	CHECK FLOATS	11:54:52	12	END JOB	11:55:14

Customer: WPX	Job Date: 26-Jan-2013	Sales Order #: 900121747
Well Description: PA 423-4	Job Type: SURFACE	ADC Used: YES
Customer Rep: RON TOWERS	Cement Supervisor: JESSE SLAUGHTER	Elite #: CHRIS KAMMEIER

OptiCem v6.4.10
26-Jan-13 12:08