

T11N, R97W, 6th P.M.

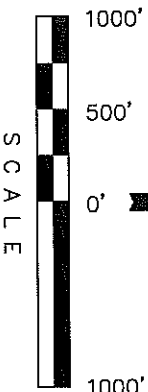
WEXPRO COMPANY

Well location, MUSSER #68, located as shown in the NE 1/4 SE 1/4 of Section 6, T11N, R97W, 6th P.M., Moffat County, Colorado.

BASIS OF ELEVATION

SPOT ELEVATION LOCATED AT THE SOUTHEAST CORNER OF SECTION 4, T11N, R97W, 6th P.M. TAKEN FROM THE POWDER WASH QUADRANGLE, COLORADO, MOFFAT COUNTY, 7.5 MINUTE SERIES (TOPOGRAPHICAL MAP) PUBLISHED BY THE UNITED STATES DEPARTMENT OF THE INTERIOR, GEOLOGICAL SURVEY. SAID ELEVATION IS MARKED AS BEING 6644 FEET.

NOTE:  
SEE ADDENDUM TO LEGAL PLAT FOR  
EXISTING IMPROVEMENTS WITHIN 400'  
OF THE PROPOSED WELL DISTURBANCE.



CERTIFICATE

THIS IS TO CERTIFY THAT THE ABOVE PLAT WAS PREPARED FROM FIELD NOTES OF ACTUAL SURVEYS MADE BY ME OR UNDER MY SUPERVISION AND THAT THE SAME ARE TRUE AND CORRECT TO THE BEST OF MY KNOWLEDGE AND BELIEF.

REGISTERED AND SIGNATORY  
REGISTRATION NO. 1081933  
STATE OF COLORADO  
07-28-11

REVISED: 07-12-11  
REVISED: 01-03-11  
REVISED: 12-27-10

UTAH ENGINEERING & LAND SURVEYING  
85 SOUTH 200 EAST - VERNAL, UTAH 84078  
(435) 789-1017

PDOP = 1.2

SCALE  
1" = 1000'

DATE SURVEYED: 07-21-10  
DATE DRAWN: 08-02-10

PARTY  
D.K. B.H. S.L.

REFERENCES  
G.L.O. PLAT

WEATHER  
HOT

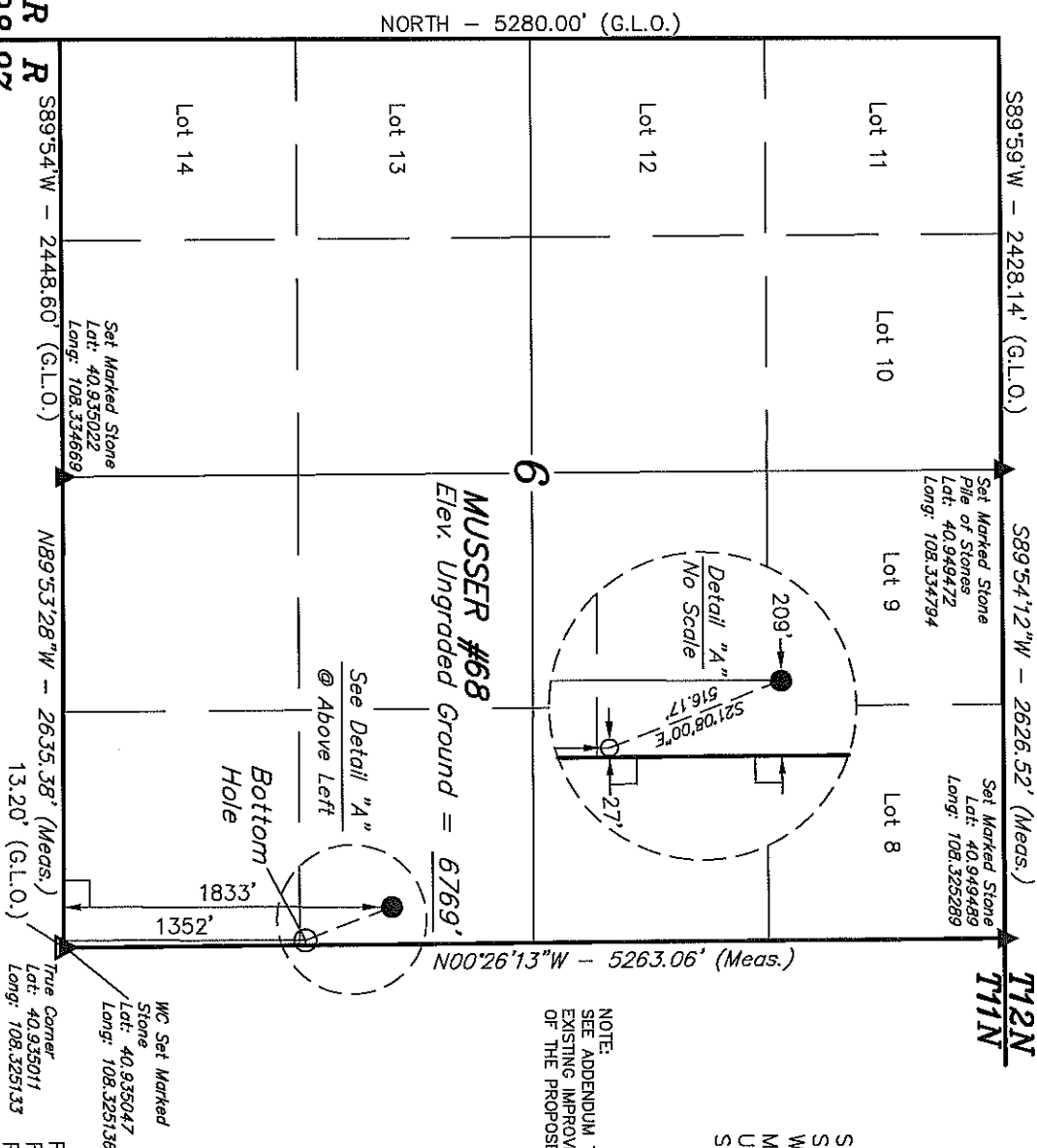
FILE  
WEXPRO COMPANY

LEGEND:

- = 90° SYMBOL
- = PROPOSED WELL HEAD.
- ▲ = SECTION CORNERS LOCATED.

BASIS OF BEARINGS IS A G.P.S. OBSERVATION.

BASIS OF BEARINGS



NAD 83 (TARGET BOTTOM HOLE)	NAD 83 (SURFACE LOCATION)
LATITUDE = 40°56'19.40" (40.938722)	LATITUDE = 40°56'24.15" (40.940042)
LONGITUDE = 108°19'30.96" (108.325272)	LONGITUDE = 108°19'33.40" (108.325944)
NAD 27 (TARGET BOTTOM HOLE)	NAD 27 (SURFACE LOCATION)
LATITUDE = 40°56'19.53" (40.938758)	LATITUDE = 40°56'24.28" (40.940078)
LONGITUDE = 108°19'28.63" (108.324619)	LONGITUDE = 108°19'31.05" (108.325292)