

DATE: 05-8-13
DRAWN BY: C.J.C.
REVISED: 05-16-13 D.B.S.
06-03-13 D.B.S.

NOTE:
Only 6" Topsoil Stripping
On Cuttings Area.

Encana OIL & GAS (USA) INC.
CONSTRUCTION LAYOUT FOR
CUTTINGS AREA FOR WELL PAD H04 596
SECTIONS 33 & 34, T4S, R96W, 6th P.M.

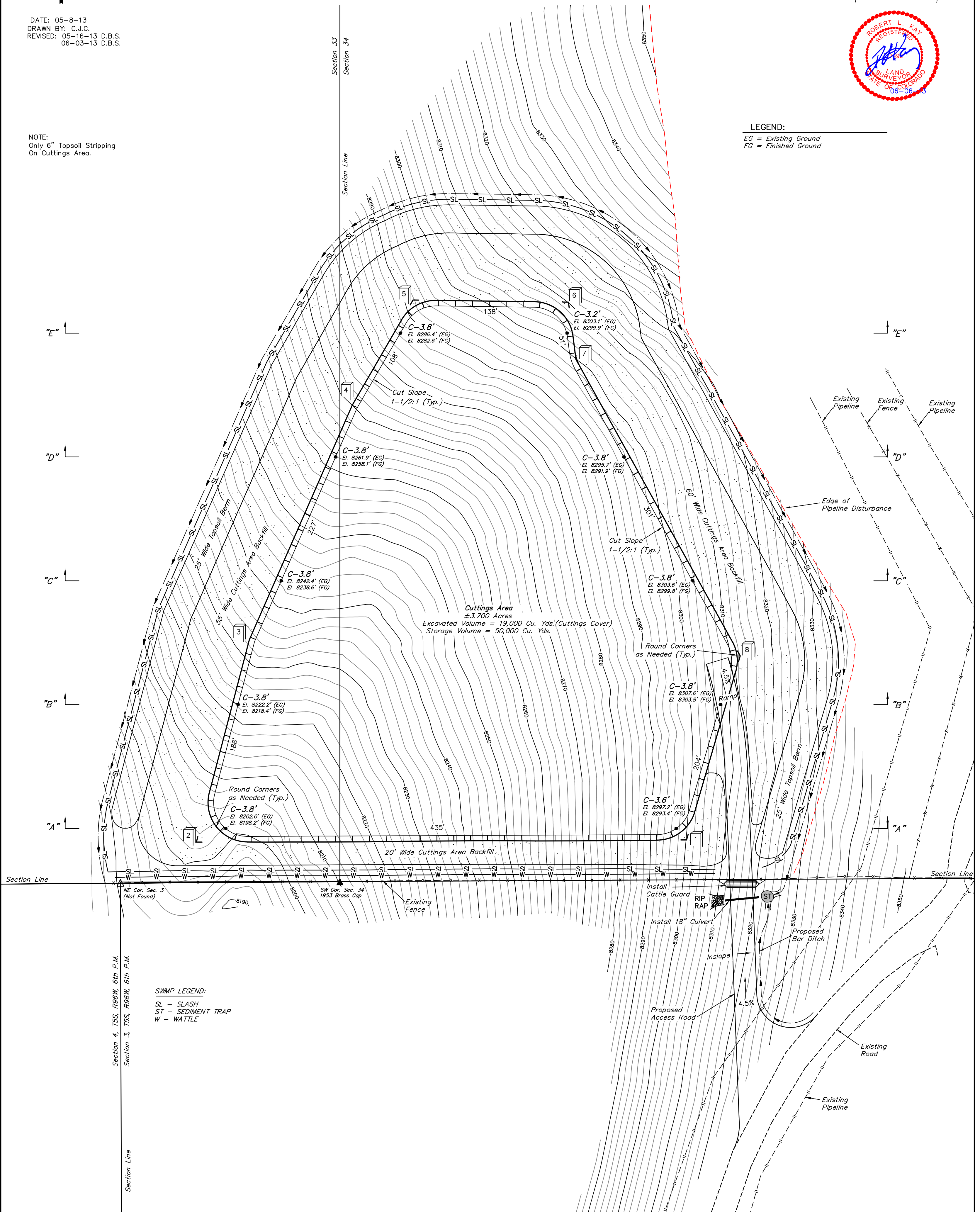


Sheet 1 of 8



LEGEND:

EG = Existing Ground
FG = Finished Ground



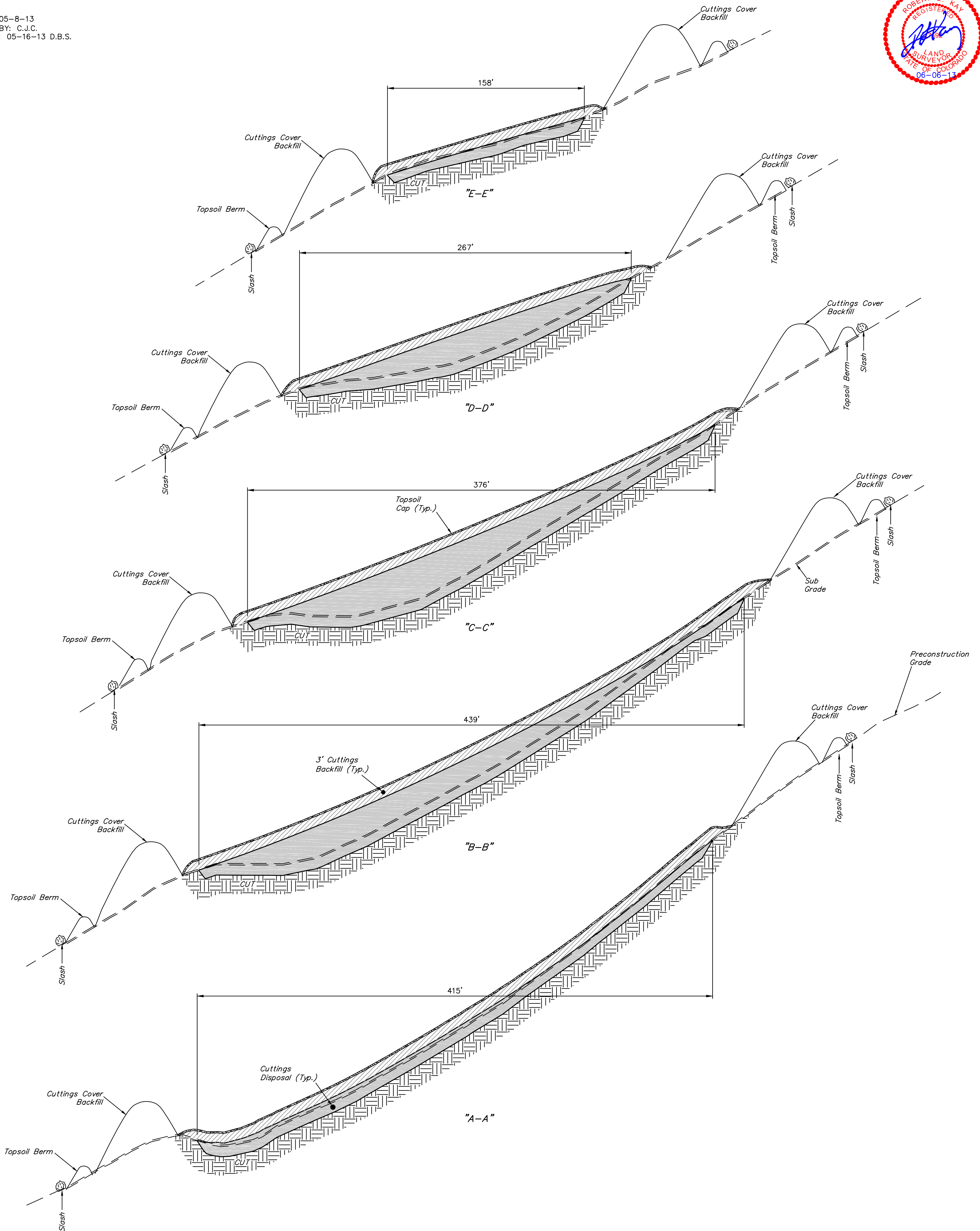
SWMP LEGEND:
SL - SLASH
ST - SEDIMENT TRAP
W - WATTLE

1" = 20'
X-Section
Scale
1" = 50'

Encana OIL & GAS (USA) INC.
CONSTRUCTION LAYOUT CROSS SECTIONS FOR
CUTTINGS AREA FOR WELL PAD H04 596
SECTIONS 33 & 34, T4S, R96W, 6th P.M.

Sheet 2 of 8

DATE: 05-8-13
DRAWN BY: C.J.C.
REVISED: 05-16-13 D.B.S.



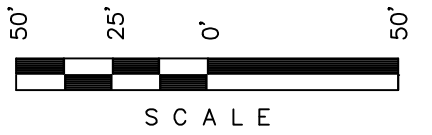
APPROXIMATE YARDAGES

(6") Topsoil Stripping = 5,430 Cu. Yds.
Remaining Location = 19,000 Cu. Yds.
TOTAL CUT = 24,430 CU. YDS.
FILL = 0 CU. YDS.

EXCESS MATERIAL = 24,430 Cu. Yds.
Topsoil = 5,430 Cu. Yds.
3' Cutting Backfill = 19,000 Cu. Yds.
EXCESS UNBALANCE = 0 Cu. Yds.
(After Interim Rehabilitation)



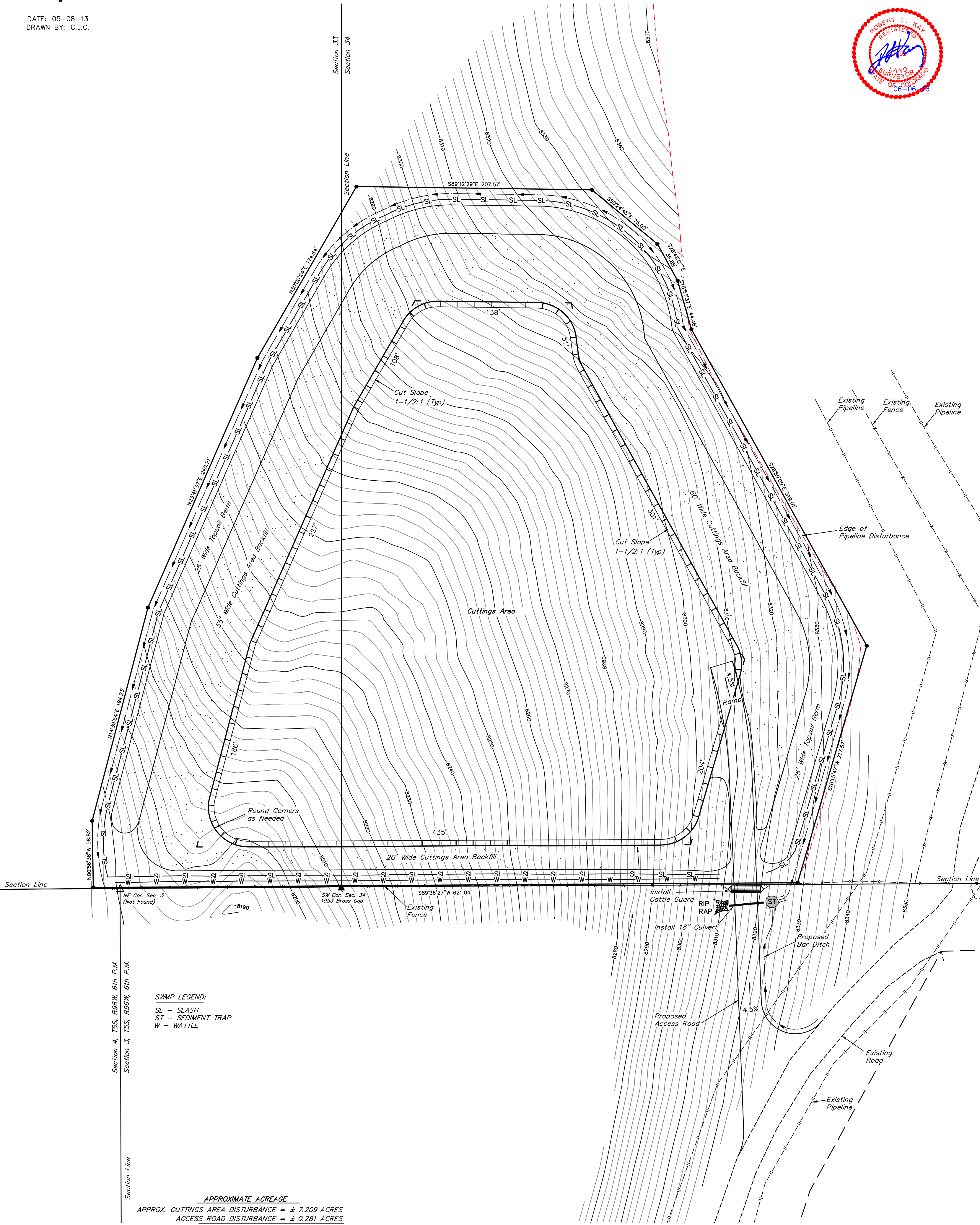
Encana OIL & GAS (USA) INC.
SURFACE DISTURBANCE AREA FOR
CUTTINGS AREA FOR WELL PAD H04 596
SECTIONS 33 & 34, T4S, R96W, 6th P.M.



Sheet 3 of 8



DATE: 05-08-13
DRAWN BY: C.J.C.



SWMP LEGEND:
SL - SLASH
ST - SEDIMENT TRAP
W - WATTLE

Section 4, T5S, R96W, 6th P.M.
Section 3, T5S, R96W, 6th P.M.

APPROXIMATE ACREAGE
APPROX. CUTTINGS AREA DISTURBANCE = ± 7.209 ACRES
ACCESS ROAD DISTURBANCE = ± 0.281 ACRES
TOTAL = ± 7.490 ACRES