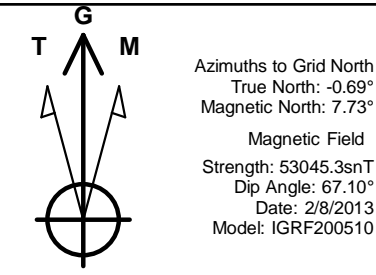
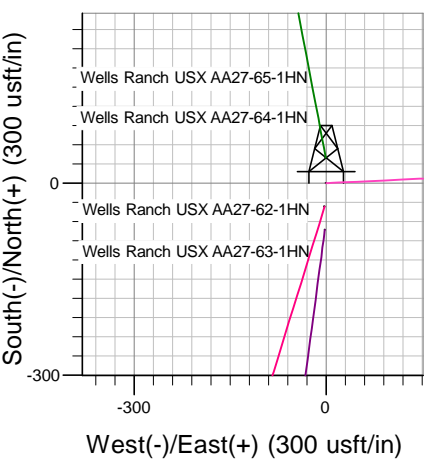
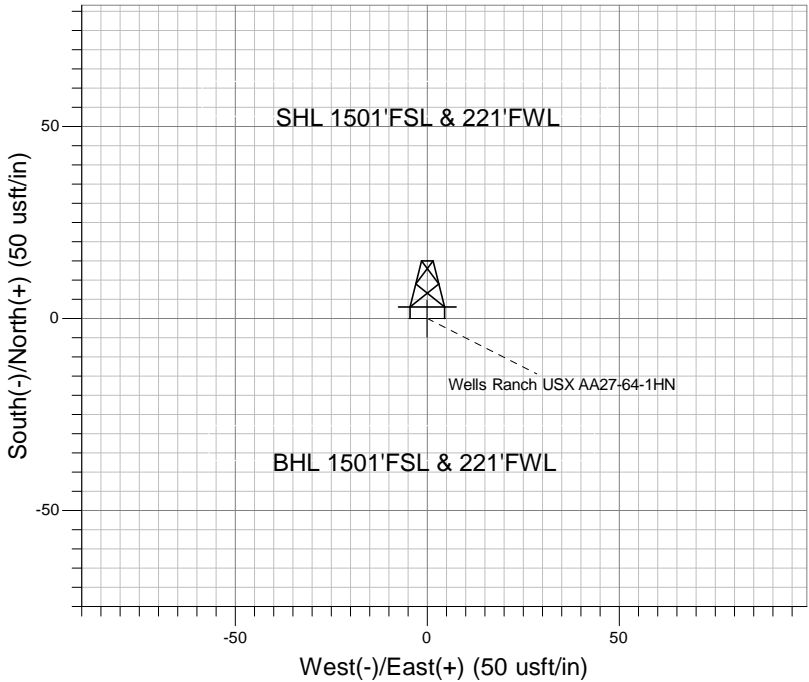
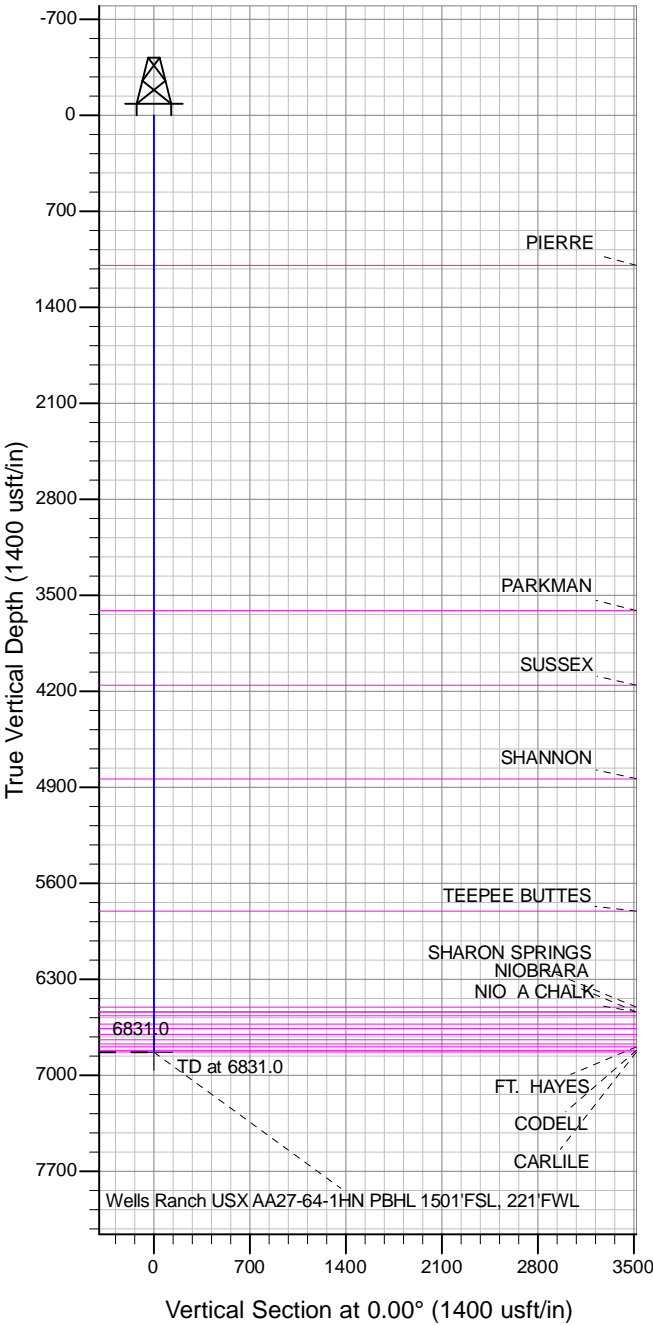


Project: Wattenberg Field
Site: AA (Sec.27-T06N-R63W) Weld County, CO
Well: Wells Ranch USX AA27-64-1HN
Wellbore: Original Drilling
Design: APD - Rev 1 (Pilot Hole)

Northern Region Drilling

Geodetic System: US State Plane 1983
Datum: North American Datum 1983
Ellipsoid: GRS 1980
Zone: Colorado Northern Zone
System Datum: Mean Sea Level



Created by: Shailey Jewell
Date: 15:35, June 04 2013
Approved by:
Date:

Well Details: Wells Ranch USX AA27-64-1HN

Ground Level: 4794.0
Northing: 1410132.33 Easting: 3297264.85
Latitude: 40.454300 Longitude: -104.431780

WELLBORE TARGET DETAILS (LAT/LONG)

Name	TVD	+N/-S	+E/-W	Latitude	Longitude	Shape
Wells Ranch USX AA27-64-1HN PBHL 1501'FSL, 221'FWL	6831.0	0.0	0.0	40.454300	-104.431780	Point

SECTION DETAILS

Sec	MD	Inc	Azi	TVD	+N/-S	+E/-W	Dleg	TFace	VSect	Target
1	0.0	0.00	0.00	0.0	0.0	0.0	0.00	0.00	0.0	
2	6831.0	0.00	0.00	6831.0	0.0	0.0	0.00	0.00	0.0	