

T11N, R97W, 6th P.M.

WEXPRO COMPANY

Well location, MUSSER #43 (SURFACE LOCATION), located as shown in the NE 1/4 SE 1/4 of Section 8, T11N, R97W, 6th P.M., Moffat County, Colorado.

BASIS OF ELEVATION

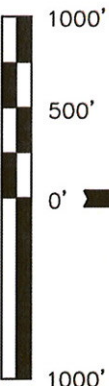
SPOT ELEVATION LOCATED AT THE SOUTHEAST CORNER OF SECTION 4, T11N, R97W, 6th P.M. TAKEN FROM THE POWDER WASH QUADRANGLE, COLORADO, MOFFAT COUNTY, 7.5 MINUTE SERIES (TOPOGRAPHICAL MAP) PUBLISHED BY THE UNITED STATES DEPARTMENT OF THE INTERIOR, GEOLOGICAL SURVEY. SAID ELEVATION IS MARKED AS BEING 6644 FEET.

BASIS OF BEARINGS

BASIS OF BEARINGS IS A G.P.S. OBSERVATION.

LINE	DIRECTION	LENGTH
L1	N57°03'40"E	834.95'

Bottom
Hole



CERTIFICATE

THIS IS TO CERTIFY THAT THE ABOVE LOCATION WAS PREPARED FROM FIELD NOTES OF ACTUAL SURVEYS MADE BY ME OR UNDER MY SUPERVISION AND THAT THE SAME ARE TRUE AND CORRECT TO THE BEST OF MY KNOWLEDGE AND BELIEF.

REGISTERED LAND SURVEYOR
REGISTRATION NO. 91-28-11
STATE OF COLORADO

REVISED: 11-28-11 S.L.

UINTAH ENGINEERING & LAND SURVEYING
85 SOUTH 200 EAST - VERNAL, UTAH 84078
(435) 789-1017

SCALE 1" = 1000'

DATE SURVEYED:	DATE DRAWN:
07-21-10	08-31-10

PARTY D.K. J.D. C.H.

REFERENCES
G.L.O. PLAT

WEATHER WARM

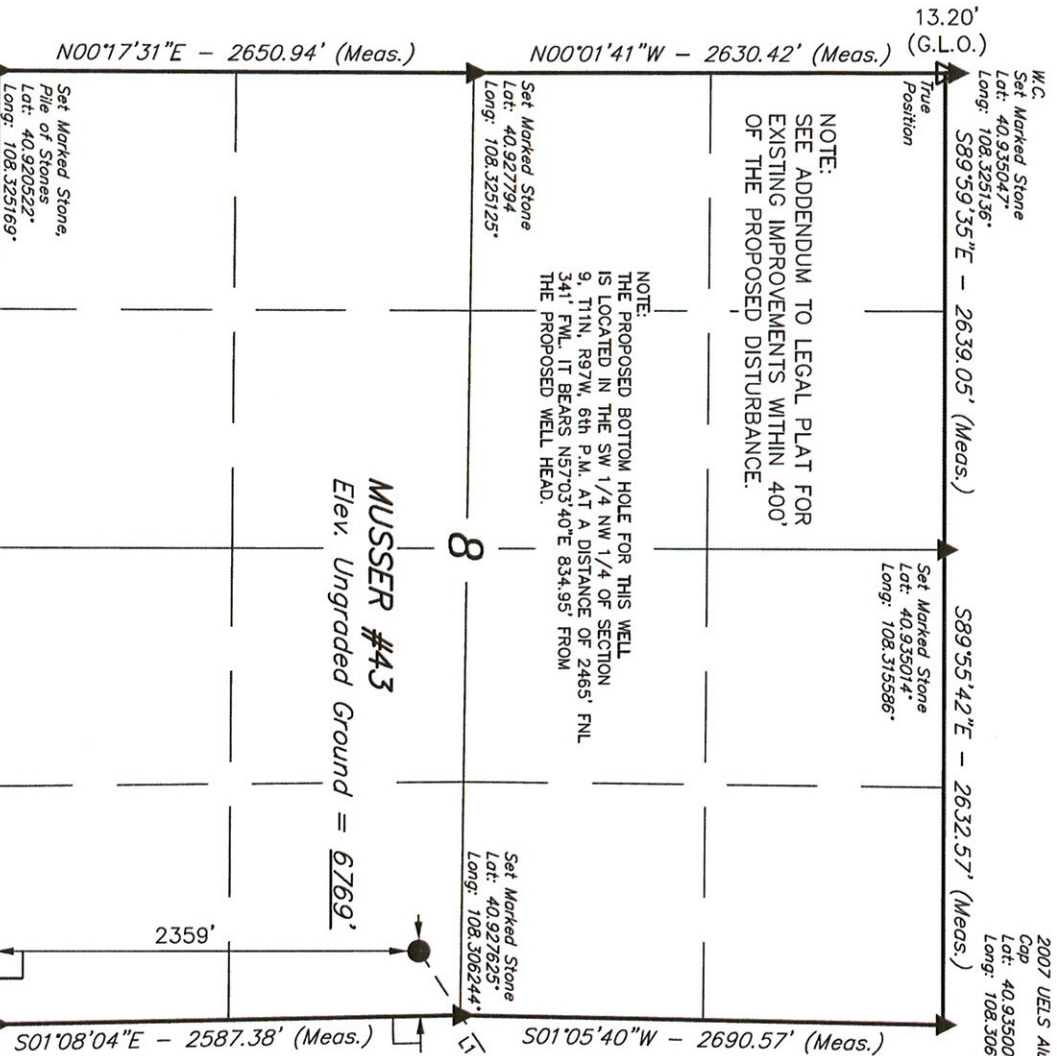
FILE
WEXPRO COMPANY

LEGEND:

— = 90° SYMBOL

● = PROPOSED WELL HEAD.

▲ = SECTION CORNERS LOCATED.



T11N, R97W, 6th P.M.

WEXPRO COMPANY

2007 UELS Alum.
Cap
Lat: 40.935006°
Long: 108.306061°

S89°44'38"W - 2636.04' (Meas.)

S89°46'50"W - 2626.53' (Meas.)

Set Marked Stone,
Pile of Stones,
Steel Post
Lat: 40.935039
Long: 108.296525

Set Marked Stone,
Pile of Stones,
Steel Post
Lat: 40.935067
Long: 108.287022

NOTE:
THE PROPOSED BOTTOM HOLE FOR THIS WELL
BEARS N57°03'40"E 834.95' FROM THE
PROPOSED WELL HEAD.

MUSSER #43
TARGET BOTTOM HOLE

9

Set Marked Stone
Lat: 40.927625°
Long: 108.306244°
Surface
Location

S01°08'04"E - 2587.38' (Meas.)

S01°05'40"W - 2690.57' (Meas.)

2010 UELS Alum.
Cap
Lat: 40.920528°
Long: 108.306058°

Set Marked Stone,
Pile of Stones,
Steel Post
Lat: 40.920547°
Long: 108.296636°

Set Marked Stone,
Pile of Stones,
Steel Post
Lat: 40.920600°
Long: 108.287078°

N00°23'13"E - 2656.91' (Meas.)

N00°03'04"W - 2616.53' (Meas.)

Set Marked Stone,
Steel Post 3' NW
of Stone
Lat: 40.927889
Long: 108.287014

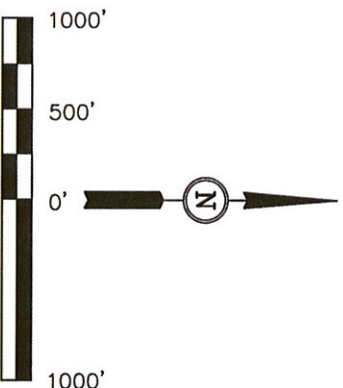
Well location, MUSSER #43 (TARGET BOTTOM HOLE), located as shown in the SW 1/4 NW 1/4 of Section 9, T11N, R97W, 6th P.M., Moffat County, Colorado.

BASIS OF ELEVATION

SPOT ELEVATION LOCATED AT THE SOUTHEAST CORNER OF SECTION 4, T11N, R97W, 6th P.M. TAKEN FROM THE POWDER WASH QUADRANGLE, COLORADO, MOFFAT COUNTY, 7.5 MINUTE SERIES (TOPOGRAPHICAL MAP) PUBLISHED BY THE UNITED STATES DEPARTMENT OF THE INTERIOR, GEOLOGICAL SURVEY. SAID ELEVATION IS MARKED AS BEING 6644 FEET.

BASIS OF BEARINGS

BASIS OF BEARINGS IS A G.P.S. OBSERVATION.



CERTIFICATE

THIS IS TO CERTIFY THAT THE ABOVE PLAT WAS PREPARED FROM FIELD NOTES OF ACTUAL SURVEYS MADE BY ME OR UNDER MY SUPERVISION AND THAT THE SAME ARE TRUE AND CORRECT TO THE BEST OF MY KNOWLEDGE AND BELIEF.

REGISTERED LAND SURVEYOR
REGISTRATION NO. 12492
STATE OF COLORADO
EXPIRES 09-28-11

REVISED: 11-28-11 S.L.

UINTAH ENGINEERING & LAND SURVEYING
85 SOUTH 200 EAST - VERNAL, UTAH 84078
(435) 789-1017

LEGEND:

— = 90° SYMBOL

● = PROPOSED WELL HEAD.

▲ = SECTION CORNERS LOCATED.

LINE	DIRECTION	LENGTH
L1	N57°03'40"E	834.95'

NAD 83 (TARGET BOTTOM HOLE)
LATITUDE = 40°55'41.69" (40.928247)
LONGITUDE = 108°18'17.99" (108.304997)
NAD 27 (TARGET BOTTOM HOLE)
LATITUDE = 40°55'41.82" (40.928283)
LONGITUDE = 108°18'15.65" (108.304347)

SCALE	1" = 1000'	DATE SURVEYED:	07-21-10	DATE DRAWN:	08-31-10
PARTY	D.K. J.D. C.H.	REFERENCES	G.L.O. PLAT		
WEATHER	WARM	FILE	WEXPRO COMPANY		