

Think Oil, Incorporated



Exposed well casing and adjacent areas.



Viewing southwest, exposed well pipe racks, w/tubing rods in background.

Vaughn #1 Well API #081-05332



Viewing west: U-nreclaimed well pad devoid of vegetation & BMPS.



Viewing east: northern edge of well location with abandoned oil & gas machinery, equipment & supplies, (pipe racks, tubing rods, casing, pumping units).

June 5, 2013



Close up view of well.



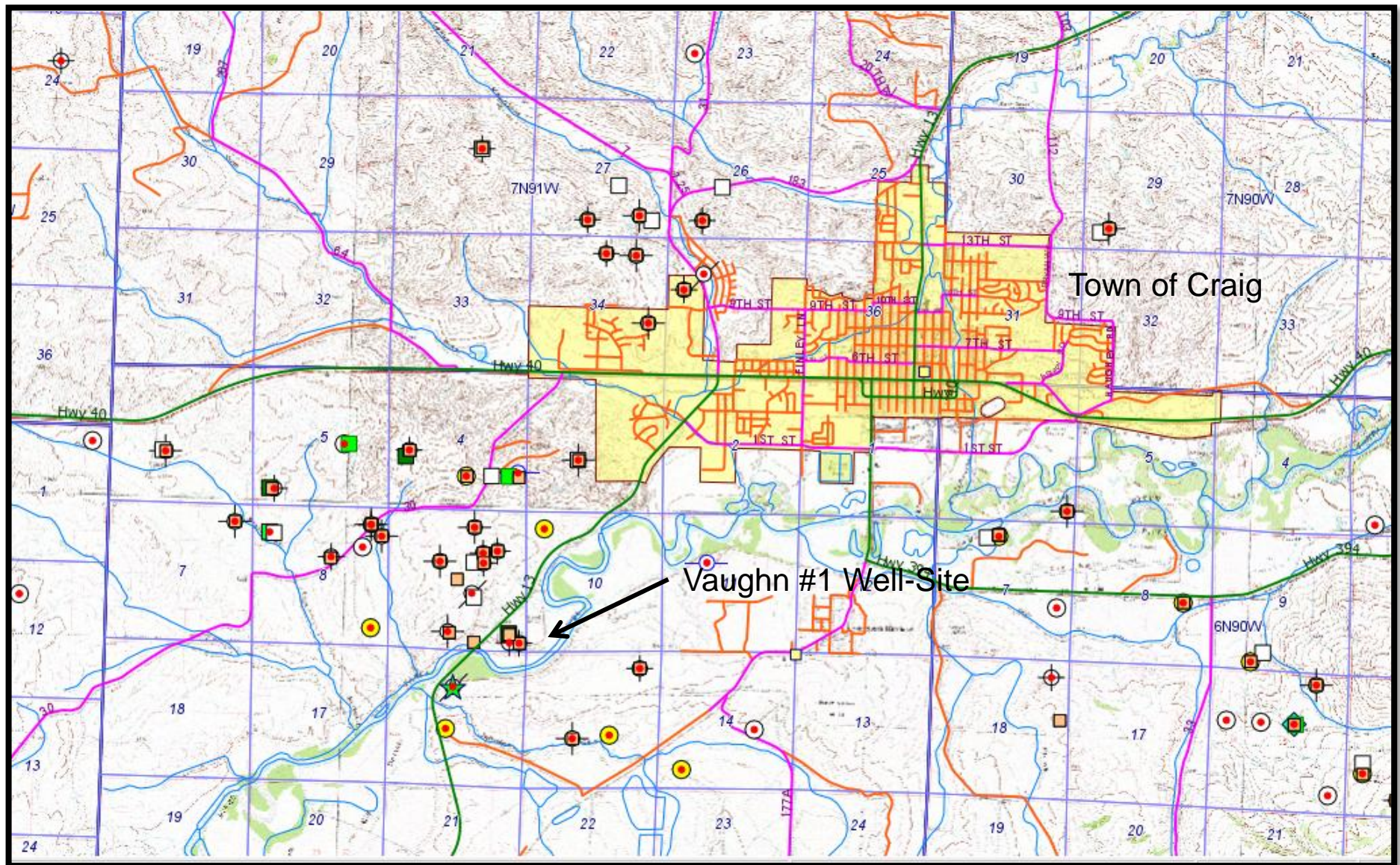
Close up view of oil saturation surrounding well piping exterior, casing-head, and adjacent soils and vegetation.



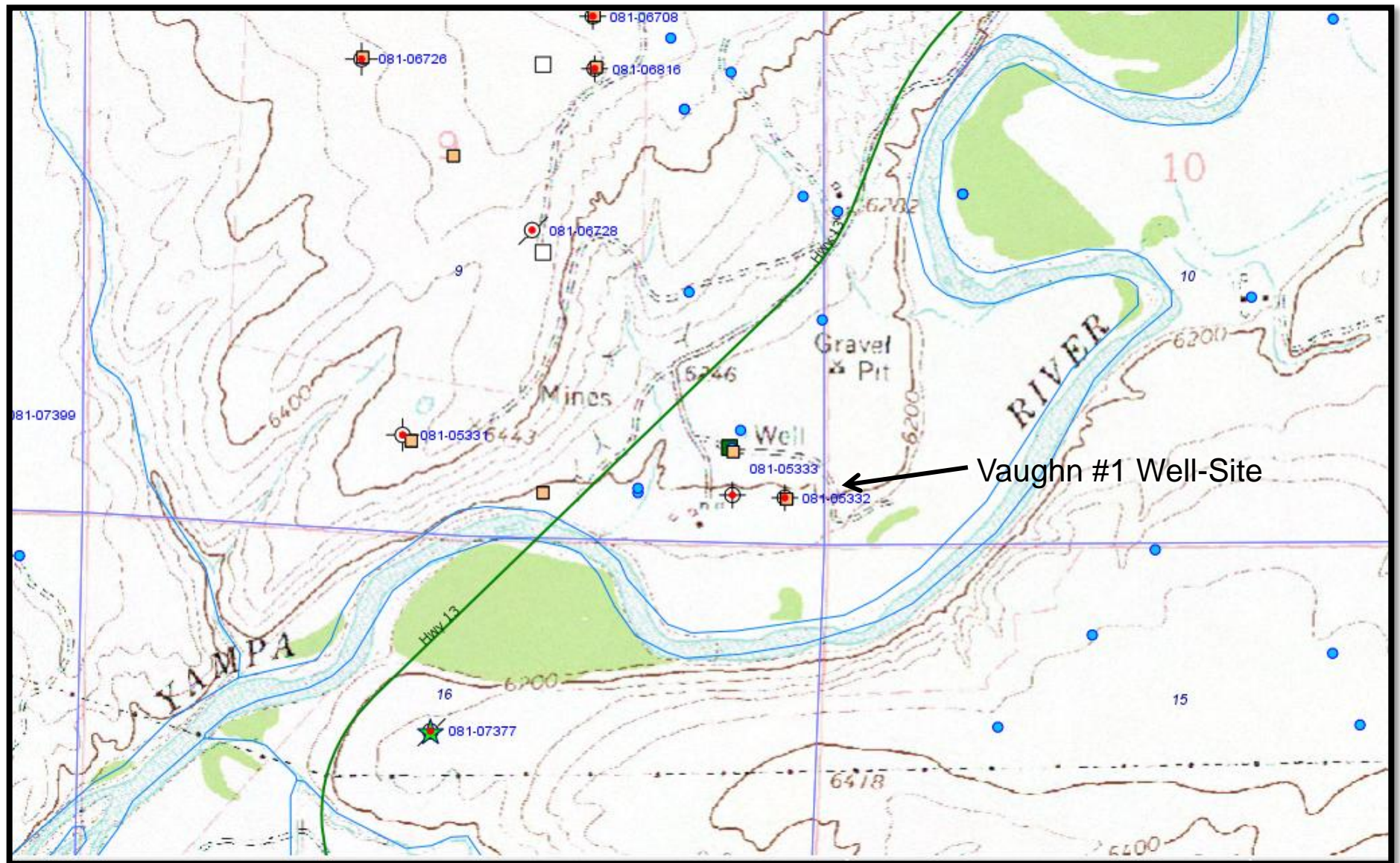
Close up view of oil saturation surrounding well piping exterior, casing-head, and adjacent soils and vegetation.



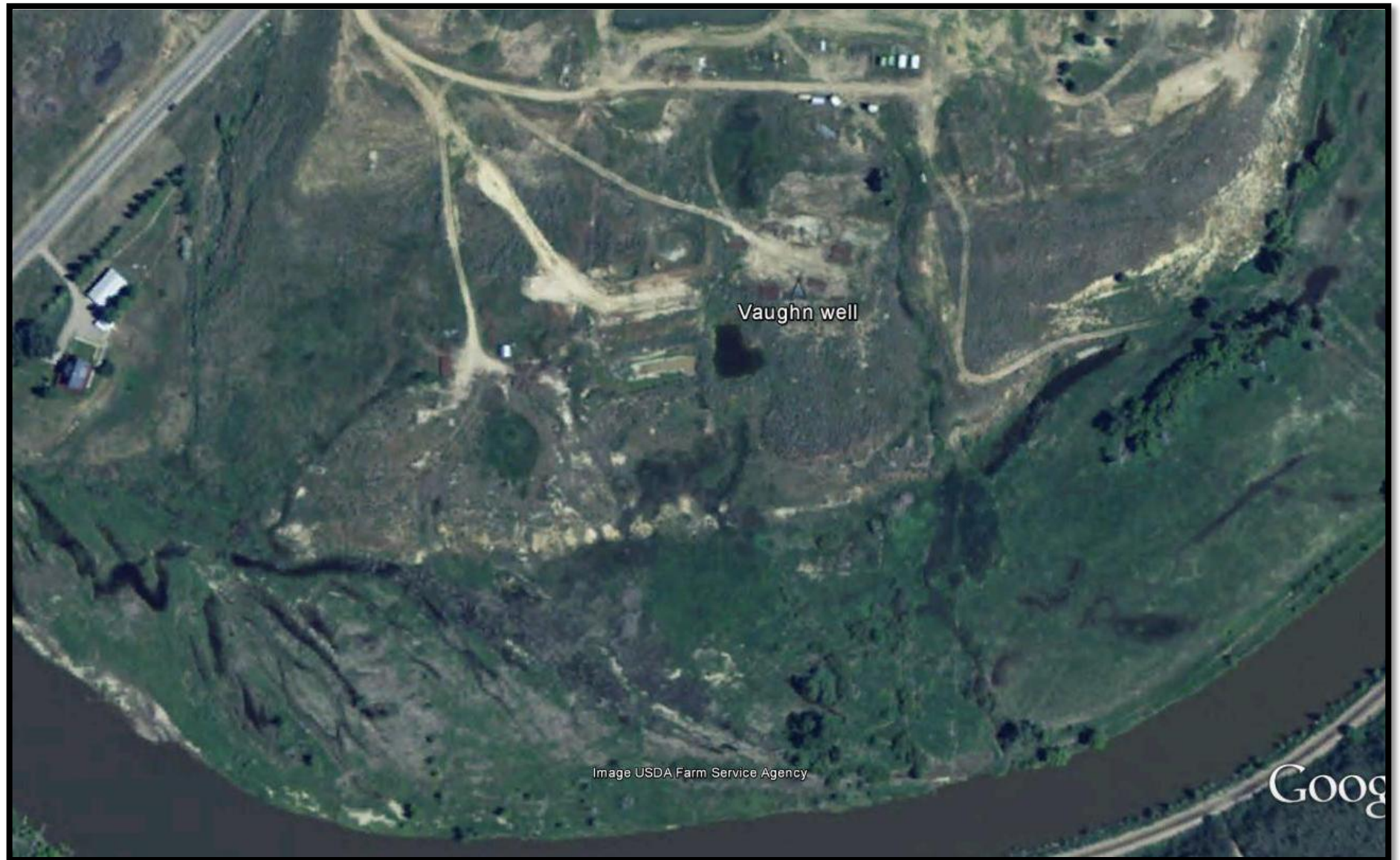
Interior view of production casing (~4'') showing present hydrostatic level of viscid brown oil. (bubbling at time of inspection).



Site Location – Regional Map



Site Location – USGS topographic map



8/18/2011 Aerial Image – Google Earth



2009Aerial Image – COGcc GISOnline