



GAMMA RAY CCL
CEMENT BOND VDL

Company NOBLE ENERGY INC.

Well Lucid BCB 1-10

Field WATTENBERG

County WELD

State COLORADO

Location: API #: 0572314285

Other Services

SEC 1 NE / SE

Perment Datum TWP 5N R3E 64W

Log Measured from KB

Drilling Measured from KB

Date May 13, 2013

Run Number 6348

Depth Logger 1000'

Bottom Logged Interval 1000'-0'

Top Log Interval

Open Hole Size

Type Fluid WATER

Estimated Cement Top

Time Well Ready

Equipment Number 1-11/16 Tekco

Recorded By MCS253 3/24/10 S2716 S10210 Emic

Witnessed By

Run Number

Boothie Record

Run Number

Size

Weight

Production String 3.5"

<<< Fold Here >>>

All interpretations are opinions based on inferences from electrical or other measurements and we cannot and do not guarantee the accuracy or correctness of any interpretation, and we shall not, except in the case of gross or willful negligence on our part, be liable or responsible for any loss, costs, damages, or expenses incurred or sustained by anyone resulting from any interpretation made by any of our officers, agents or employees. These interpretations are also subject to our general terms and conditions set out in our current Price Schedule.

Comments

Thank You For Using Nabors!!

Calibration Report

Database File: lucicbcb1-10.db
Dataset Pathname: pass1
Dataset Creation: Mon May 13 07:48:36 2013 by Log Std Casedhole 10081

Gamma Ray Calibration Report

Serial Number: 1-11/16T
Tool Model: T1-11/16
Performed: Mon Mar 19 12:14:55 2012
Calibrator Value: 1.0 GAPI
Background Reading: 0.0 cps
Calibrator Reading: 1.0 cps
Sensitivity: 1.0000 GAPI/cps

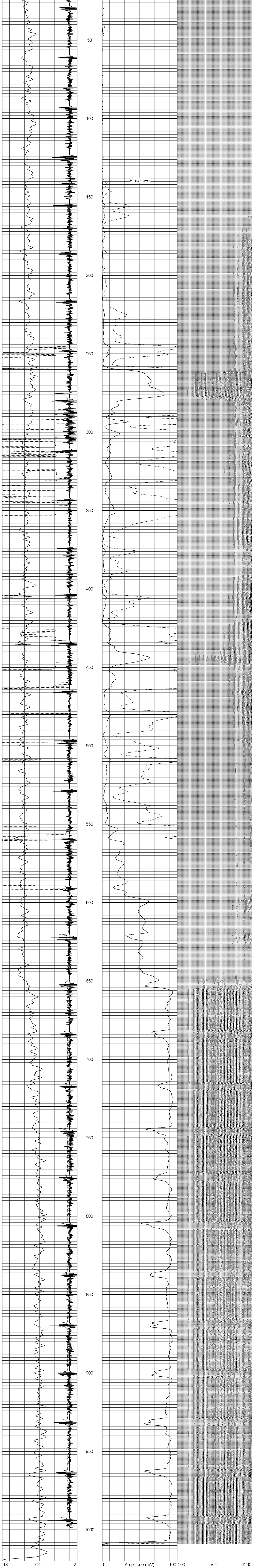
Cement Bond Log Calibration Report

Serial Number: TEKCO-01
Tool Model: TEKCO-1x2
Performed: Mon May 13 07:46:33 2013
Depth: 755.308 ft
Casing Diameter: 3.5 in
Signal Zero: 0.8 mV
Calibrated Amplitude: 94.5169 mV
Reading at Signal Zero: 0.00913086 mV
Reading in Free Pipe: 0.00915527 mV
Gain: 119.316
Offset: -0.28946

Sensor	Offset (ft)	Schematic	Description	Len (ft)	OD (in)	Wt (lb)
			CHD-STNDRD (1) Standard Cable Head	1.00	1.69	5.00
CCL	20.80		CCL-T1-11/16 (1-11/16T) Titan 1-11/16 collar locator	1.83	1.69	20.00
			1.69 MOT 1 11/16" MOT Tekco Adjustable Centralizer	2.83	1.69	10.00
WVF3	11.94		CBL-TEKCO-1x2 (TEKCO-01) TEKCO Cement Bond 1x2	9.68	1.69	40.00
WVF5	10.96					
			1.69 MOT 1 11/16" MOT Tekco Adjustable Centralizer	2.83	1.69	10.00
GR	1.43		GR-T1-11/16 (1-11/16T) Titan 1-11/16 Gamma Ray	4.75	1.69	20.00

Dataset: lucicbcb1-10.db; field/well/run1/pass1
Total Length: 22.93 ft
Total Weight: 105.00 lb
O.D.: 1.69 in

18	CCL	-2	0	Amplitude (mV)	100	200	VDL	1200
0	Gamma Ray (GAPI)	200	0	Amplified Amplitude (mV)	10			
400	TT3 (usec)	200						
200	GR (GAPI)	400						



18	CCL	-2	0	Amplitude (mV)	100	200	VDL	1200
0	Gamma Ray (GAPI)	200	0	Amplified Amplitude (mV)	10			
400	TT3 (usec)	200						
200	GR (GAPI)	400						