

---

# **WPX ENERGY ROCKY MOUNTAIN LLC-EBUS**

---

**PA 323-4  
PARACHUTE  
Garfield County , Colorado**

**Cement Surface Casing  
08-Feb-2013**

**Post Job Report**

## The Road to Excellence Starts with Safety

Sold To #: 300721	Ship To #: 2974072	Quote #:	Sales Order #: 900134336
Customer: WPX ENERGY ROCKY MOUNTAIN LLC-EBUS	Customer Rep: Towers, Ron		
Well Name: PA	Well #: 323-4	API/UWI #: 05-045-20080	
Field: PARACHUTE	City (SAP): PARACHUTE	County/Parish: Garfield	State: Colorado
Lat: N 39.464 deg. OR N 39 deg. 27 min. 48.78 secs.	Long: W 108.007 deg. OR W -109 deg. 59 min. 35.077 secs.		
Contractor: NABORS 577	Rig/Platform Name/Num: NABORS 577		
Job Purpose: Cement Surface Casing			
Well Type: Development Well	Job Type: Cement Surface Casing		
Sales Person: MAYO, MARK	Srvc Supervisor: KUKUS, CHRISTOPHER	MBU ID Emp #: 413952	

## Job Personnel

HES Emp Name	Exp Hrs	Emp #	HES Emp Name	Exp Hrs	Emp #	HES Emp Name	Exp Hrs	Emp #
GOWEN, WESLEY M	0.0	496205	KAMMEIER, CHRISTOPHER Michael	0.0	524554	KUKUS, CHRISTOPHER A	0.0	413952

## Equipment

HES Unit #	Distance-1 way	HES Unit #	Distance-1 way	HES Unit #	Distance-1 way	HES Unit #	Distance-1 way

## Job Hours

Date	On Location Hours	Operating Hours	Date	On Location Hours	Operating Hours	Date	On Location Hours	Operating Hours

TOTAL	Total is the sum of each column separately							
-------	--------------------------------------------	--	--	--	--	--	--	--

## Job

Formation Name	Top	Bottom	Called Out	Date	Time	Time Zone
Formation Depth (MD)			On Location	08 - Feb - 2013	04:30	MST
Form Type	BHST		Job Started	08 - Feb - 2013	08:04	MST
Job depth MD	750. ft	Job Depth TVD	Job Completed	08 - Feb - 2013	08:54	MST
Water Depth		Wk Ht Above Floor	Departed Loc	08 - Feb - 2013	10:00	MST
Perforation Depth (MD)	From	To				

## Well Data

Description	New / Used	Max pressure psig	Size in	ID in	Weight lbm/ft	Thread	Grade	Top MD ft	Bottom MD ft	Top TVD ft	Bottom TVD ft
OPEN HOLE				13.5				.	750.		
SURFACE CASING	New		9.625	9.001	32.3		I-80	.	738.		

Sales/Rental/3<sup>rd</sup> Party (HES)

Description	Qty	Qty uom	Depth	Supplier
PLUG,CMTG,TOP,9 5/8,HWE,8.16 MIN/9.06 MA	1	EA		

## Tools and Accessories

Type	Size	Qty	Make	Depth	Type	Size	Qty	Make	Depth	Type	Size	Qty	Make
Guide Shoe					Packer					Top Plug			
Float Shoe					Bridge Plug					Bottom Plug			
Float Collar					Retainer					SSR plug set			
Insert Float										Plug Container			
Stage Tool										Centralizers			

## Miscellaneous Materials

Gelling Agt	Conc	Surfactant	Conc	Acid Type	Qty	Conc	%
Treatment Fld	Conc	Inhibitor	Conc	Sand Type	Size	Qty	

## Fluid Data

Stage/Plug #: 1
-----------------

Fluid #	Stage Type	Fluid Name	Qty	Qty uom	Mixing Density lbm/gal	Yield ft <sup>3</sup> /sk	Mix Fluid Gal/sk	Rate bbl/min	Total Mix Fluid Gal/sk
1	Water Spacer		20.00	bbl	8.33	.0	.0	.0	
2	Tail Cement	VERSACEM (TM) SYSTEM (452010)	210.0	sacks	12.8	2.11	11.75		11.75
3	Displacement		54.00	bbl	8.33	.0	.0	.0	
<b>Calculated Values</b>		<b>Pressures</b>		<b>Volumes</b>					
Displacement		Shut In: Instant		Lost Returns		Cement Slurry		Pad	
Top Of Cement		5 Min		Cement Returns		Actual Displacement		Treatment	
Frac Gradient		15 Min		Spacers		Load and Breakdown		Total Job	
<b>Rates</b>									
Circulating		Mixing		Displacement		Avg. Job			
Cement Left In Pipe	Amount	44 ft	Reason	Shoe Joint					
Frac Ring # 1 @	ID		Frac ring # 2 @	ID		Frac Ring # 3 @	ID		Frac Ring # 4 @
The Information Stated Herein Is Correct				Customer Representative Signature					

*The Road to Excellence Starts with Safety*

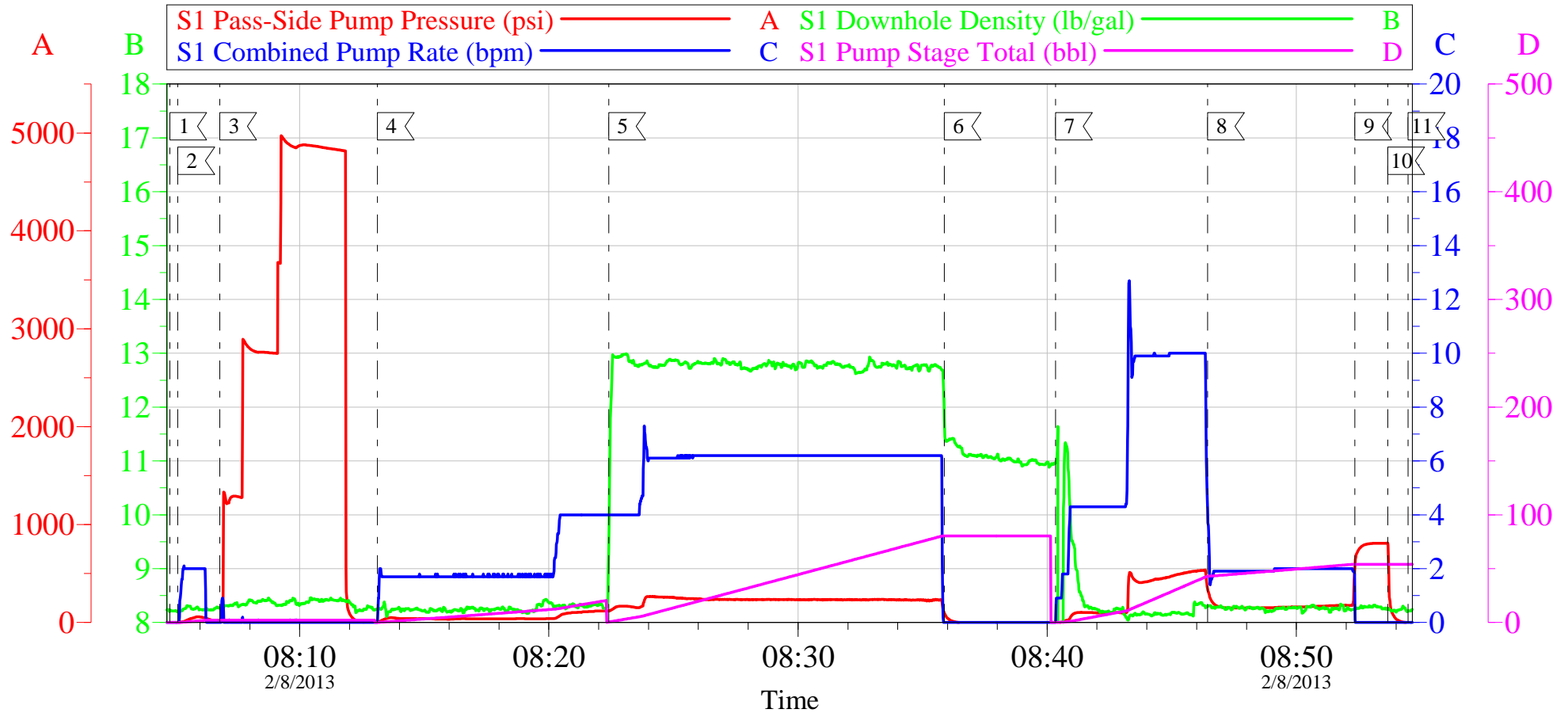
<b>Sold To #:</b> 300721		<b>Ship To #:</b> 2974072		<b>Quote #:</b>		<b>Sales Order #:</b> 900134336	
<b>Customer:</b> WPX ENERGY ROCKY MOUNTAIN LLC-EBUS				<b>Customer Rep:</b> Towers, Ron			
<b>Well Name:</b> PA			<b>Well #:</b> 323-4			<b>API/UWI #:</b> 05-045-20080	
<b>Field:</b> PARACHUTE		<b>City (SAP):</b> PARACHUTE		<b>County/Parish:</b> Garfield		<b>State:</b> Colorado	
<b>Legal Description:</b>							
<b>Lat:</b> N 39.464 deg. OR N 39 deg. 27 min. 48.78 secs.				<b>Long:</b> W 108.007 deg. OR W -109 deg. 59 min. 35.077 secs.			
<b>Contractor:</b> NABORS 577			<b>Rig/Platform Name/Num:</b> NABORS 577				
<b>Job Purpose:</b> Cement Surface Casing						<b>Ticket Amount:</b>	
<b>Well Type:</b> Development Well			<b>Job Type:</b> Cement Surface Casing				
<b>Sales Person:</b> MAYO, MARK			<b>Srv Supervisor:</b> KUKUS, CHRISTOPHER			<b>MBU ID Emp #:</b> 413952	

Activity Description	Date/Time	Cht #	Rate bbl/min	Volume bbl		Pressure psig		Comments
				Stage	Total	Tubing	Casing	
Call Out	02/08/2013 01:00							ELITE # 9
Depart Yard Safety Meeting	02/08/2013 03:00							ALL HES EMPLOYEES
Arrive At Loc	02/08/2013 04:30							HES CREW ARRIVED 30 MINS EARLY AND WAITED OFF LOCATION FOR RIG TO START CASING AND MOVE PIPE RACKS
Assessment Of Location Safety Meeting	02/08/2013 05:15							ALL HES EMPLOYEES
Pre-Rig Up Safety Meeting	02/08/2013 05:20							ALL HES EMPLOYEES
Rig-Up Equipment	02/08/2013 05:30							1 F-550 PICKUP 1 HT-400 PUMP TRUCK 1 660 BULK TRUCK
Pre-Job Safety Meeting	02/08/2013 07:45							ALL HES EMPLOYEES AND RIG CREW
Start Job	02/08/2013 08:04							TD: 750 TP: 738 SJ: 44 CSG: 9 5/8 32.3# OH: 13 1/2 MUD WT: 9.9 PPG VISC: 80 PH: 9.6 RIG GOING TO CIRCULATE FOR 1 HOUR
Test Lines	02/08/2013 08:06					4910.0		PRESSURE TEST OK
Pump Spacer	02/08/2013 08:13		4	20	20		115.0	FRESH WATER SPACER
Activity Description	Date/Time	Cht #	Rate bbl/min	Volume bbl		Pressure psig		Comments
				Stage	Total	Tubing	Casing	

Pump Tail Cement	02/08/2013 08:22		7	78.9	78.9		230.0	210 SKS 12.8 PPG 2.11 YEILD 11.75 GAL / SK TAIL CEMENT WEIGHT VERIFIED VIA MUD SCALES THROUGH OUT TAIL CEMENT
Shutdown	02/08/2013 08:35							HES WASHED PUMP ONTOP OF THE PLUG PER CO-REP REQUEST
Drop Plug	02/08/2013 08:36							PLUG AWAY NO PROBLEMS
Pump Displacement	02/08/2013 08:40		10	54.6	54.6		553.0	FRESH WATER DISPLACEMENT
Slow Rate	02/08/2013 08:46		2	44.6	44.6		153.0	SLOW RATE TO BUMP PLUG
Bump Plug	02/08/2013 08:52		2	54.6	54.2		175.0	BUMP PLUG @ 175 AND TOOK PRESSURE UP TO 810 PSI
Check Floats	02/08/2013 08:53							FLOATS HELD .5 BBL BACK TO DISPLACEMENT TANKS
End Job	02/08/2013 08:54							WELL HAD GOOD CIRCULATION THROUGH OUT CEMENT JOB GOT 17 BBLs OF CEMENT TO SURFACE RIG USED NO SUGAR TICKET CHANGES: TOOK OFF ADD HOURS, DRRECK CHARGE, SUGAR
Pre-Rig Down Safety Meeting	02/08/2013 09:10							ALL HES EMPLOYEES
Rig-Down Equipment	02/08/2013 09:15							
Pre-Convoy Safety Meeting	02/08/2013 09:50							ALL HES EMPLOYEES
Crew Leave Location	02/08/2013 10:00							THANKS FOR USING HALLIBURTON CEMENT CHRIS KUKUS AND CREW

# WPX ENERGY - PA 323-4

9 5/8 SURFACE



## Local Event Log

1	START JOB	08:04:47	2	FILL LINES	08:05:06
3	TEST LINES	08:06:48	4	PUMP FRESH WATER SPACER	08:13:07
5	PUMP TAIL CEMENT	08:22:24	6	SHUTDOWN / DROP PLUG	08:35:52
7	PUMP FRESH WATER DISPLACEMENT	08:40:20	8	SLOW RATE	08:46:26
9	BUMP PLUG	08:52:21	10	CHECK FLOATS	08:53:40
11	END JOB	08:54:29			

Customer: WPX  
Well Description: PA 323-4  
Company Rep: RON TOWERS

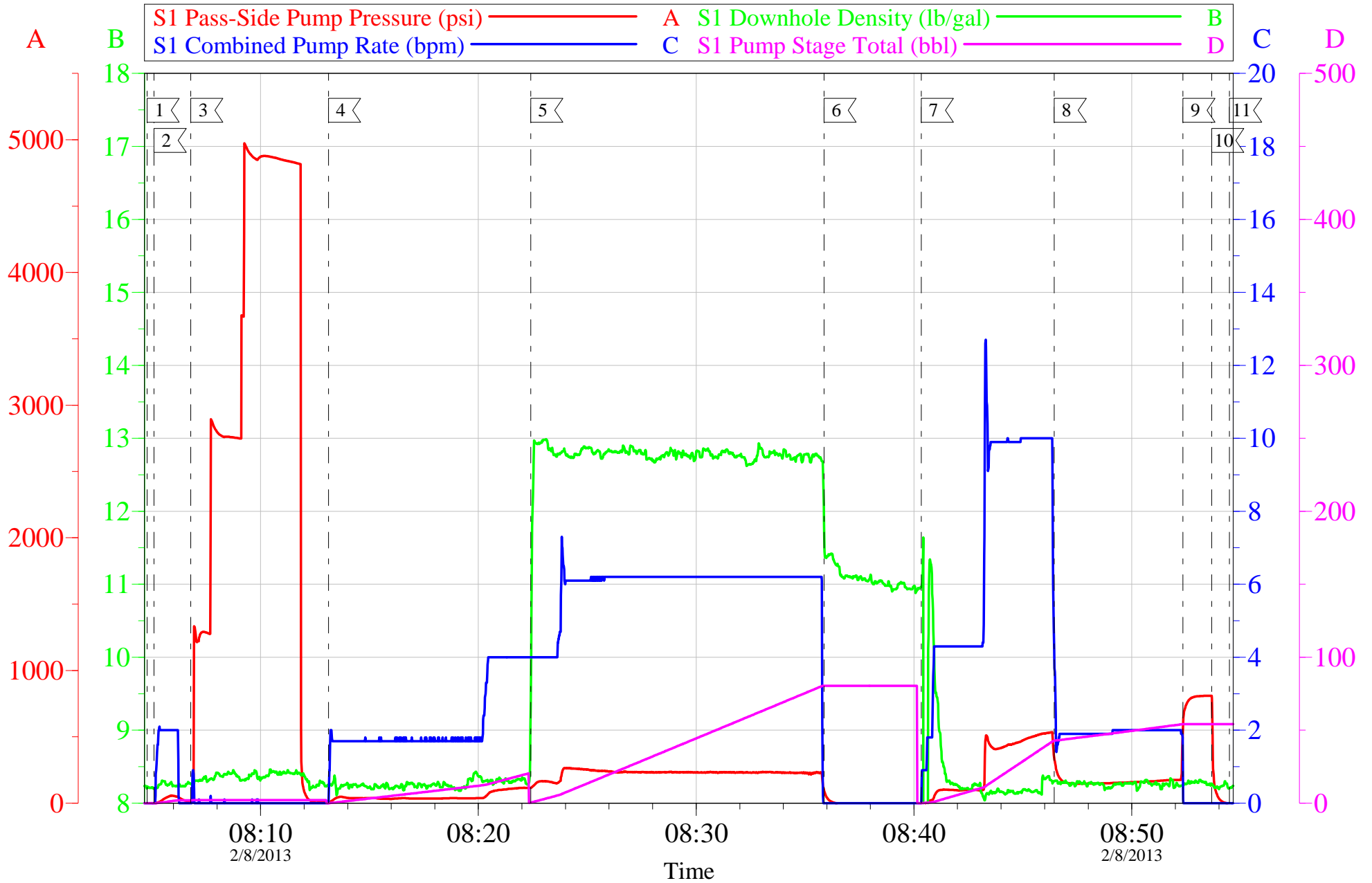
Job Date: 08-Feb-2013  
Job Type: SURFACE  
Cement Supervisor: CHRIS KUKUS

Sales Order #: 900134336  
ADC Used: YES  
Elite # 9: WESLEY GOWEN

OptiCem v6.4.10  
08-Feb-13 09:23

# WPX ENERGY - PA 323-4

9 5/8 SURFACE



Customer: WPX	Job Date: 08-Feb-2013	Sales Order #: 900134336
Well Description: PA 323-4	Job Type: SURFACE	ADC Used: YES
Company Rep: RON TOWERS	Cement Supervisor: CHRIS KUKUS	Elite # 9: WESLEY GOWEN

OptiCem v6.4.10  
08-Feb-13 09:23

# HALLIBURTON

## Water Analysis Report

Company: WPX

Submitted by: CHRIS KUKUS

Attention: J. TROUT/C.MARTINEZ

Lease PA

Well # 323-4

Date: 2/8/2013

Date Rec.: 2/8/2013

S.O.# 900134336

Job Type: SURFACE

Specific Gravity	<i>MAX</i>	<b>1</b>
pH	<i>8</i>	<b>6.8</b>
Potassium (K)	<i>5000</i>	<b>0</b> Mg / L
Calcium (Ca)	<i>500</i>	<b>120</b> Mg / L
Iron (FE2)	<i>300</i>	<b>0</b> Mg / L
Chlorides (Cl)	<i>3000</i>	<b>0</b> Mg / L
Sulfates (SO <sub>4</sub> )	<i>1500</i>	<b>UNDER 200</b> Mg / L
Chlorine (Cl <sub>2</sub> )		<b>0</b> Mg / L
Temp	<i>40-80</i>	<b>50</b> Deg
Total Dissolved Solids		<b>430</b> Mg / L

Respectfully: CHRIS KUKUS

Title: CEMENTING SUPERVISOR

Location: Grand Junction, CO

NOTICE:

This report is limited to the described sample tested. Any person using or relying on this report agrees that Halliburton shall not be liable for any loss or damage whether due to act or omission resulting from such report or its



<b>Sales Order #:</b> 900134336	<b>Line Item:</b> 10	<b>Survey Conducted Date:</b> 2/8/2013
<b>Customer:</b> WPX ENERGY ROCKY MOUNTAIN LLC-EBUS		<b>Job Type (BOM):</b> CMT SURFACE CASING BOM
<b>Customer Representative:</b> RON TOWERS		<b>API / UWI: (leave blank if unknown)</b> 05-045-20080
<b>Well Name:</b> PA		<b>Well Number:</b> 323-4
<b>Well Type:</b> Development Well	<b>Well Country:</b> United States of America	
<b>H2S Present:</b> No	<b>Well State:</b> Colorado	<b>Well County:</b> Garfield

Dear Customer,

We hope that you were satisfied with the service quality of this job performed by Halliburton. It is the aim of our management and service personnel to deliver equipment and service of a standard unmatched in the service sector of the energy industry.

Please take the time to let us know if our performance met with your satisfaction. Please be as critical as possible to ensure we constantly improve our service. Your comments are of great value to us and are intended for the exclusive use of Halliburton.

#### CUSTOMER SATISFACTION SURVEY

CATEGORY	CUSTOMER SATISFACTION RESPONSE	
Survey Conducted Date	The date the survey was conducted	2/8/2013
Survey Interviewer	The survey interviewer is the person who initiated the survey.	CHRISTOPHER KUKUS (HX35027)
Customer Participation	Did the customer participate in this survey? (Y/N)	Yes
Customer Representative	Enter the Customer representative name	RON TOWERS
HSE	Was our HSE performance satisfactory? Circle Y or N	Yes
Equipment	Were you satisfied with our Equipment? Circle Y or N	Yes
Personnel	Were you satisfied with our people? Circle Y or N	Yes
Customer Comment	Customer's Comment	

CUSTOMER SIGNATURE

<b>Sales Order #:</b> 900134336	<b>Line Item:</b> 10	<b>Survey Conducted Date:</b> 2/8/2013
<b>Customer:</b> WPX ENERGY ROCKY MOUNTAIN LLC-EBUS		<b>Job Type (BOM):</b> CMT SURFACE CASING BOM
<b>Customer Representative:</b> RON TOWERS		<b>API / UWI: (leave blank if unknown)</b> 05-045-20080
<b>Well Name:</b> PA		<b>Well Number:</b> 323-4
<b>Well Type:</b> Development Well	<b>Well Country:</b> United States of America	
<b>H2S Present:</b> No	<b>Well State:</b> Colorado	<b>Well County:</b> Garfield

*KEY PERFORMANCE INDICATORS*

General	
<b>Survey Conducted Date</b> The date the survey was conducted	2/8/2013

Cementing KPI Survey	
<b>Type of Job</b> Select the type of job. (Cementing or Non-Cementing)	0
<b>Select the Maximum Deviation range for this Job</b> What is the highest deviation for the job you just completed? This may not be the maximum well deviation.	Vertical
<b>Total Operating Time (hours)</b> Total Operating Hours Including Rig-up, Pumping, Rig-down. Enter in decimal format.	2.5
<b>HSE Incident, Accident, Injury</b> HSE Incident, Accident, Injury. This should be recordable incidents only.	No
<b>Was the job purpose achieved?</b> Was the job delivered correctly as per customer agreed design?	Yes
<b>Operating Hours (Pumping Hours)</b> Total number of hours pumping fluid on this job. Enter in decimal format.	1
<b>Customer Non-Productive Rig Time (hrs)</b> Lost time due to Halliburton in the start, execution, or completion of an ordered service or product, or delays in a follow-on service. Enter in decimal format. 0 if none.	0
<b>Type of Rig Classification Job Was Performed</b> Type Of Rig (classification) Job Was Performed On	Drilling Rig (Portable)
<b>Number Of JSAs Performed</b> Number Of Jsas Performed	6
<b>Number of Unplanned Shutdowns</b> Unplanned shutdown is when injection stops for any period of time.	0
<b>Was this a Primary Cement Job (Yes / No)</b>	Yes

<b>Sales Order #:</b> 900134336	<b>Line Item:</b> 10	<b>Survey Conducted Date:</b> 2/8/2013
<b>Customer:</b> WPX ENERGY ROCKY MOUNTAIN LLC-EBUS		<b>Job Type (BOM):</b> CMT SURFACE CASING BOM
<b>Customer Representative:</b> RON TOWERS		<b>API / UWI: (leave blank if unknown)</b> 05-045-20080
<b>Well Name:</b> PA		<b>Well Number:</b> 323-4
<b>Well Type:</b> Development Well	<b>Well Country:</b> United States of America	
<b>H2S Present:</b> No	<b>Well State:</b> Colorado	<b>Well County:</b> Garfield

Primary Cement Job= Casing job, Liner job, or Tie-back job.	
<b>Did We Run Wiper Plugs?</b> Did We Run Top And Bottom Casing Wiper Plugs?	Top
<b>Mixing Density of Job Stayed in Designed Density Range (0-100%)</b> Density Range defined as +/- .20 ppg. Calculation: Total BBLs cement mixed at designed density divided by total BBLs of cement multiplied by 100	90
<b>Was Automated Density Control Used?</b> Was Automated Density Control (ADC) Used ?	Yes
<b>Pump Rate (percent) of Job Stayed At Designed Pump Rate</b> Pump Rate range defined as +/- 1bbl/min. Calculation: Total BBLs of fluid pumped at the designed rate divided by Total BBLs of fluid pumped, multiplied by 100	90
<b>Nbr of Remedial Sqz Jobs Rqd - Competition</b> Number Of Remedial Squeeze Jobs Required After Primary Job Performed By Competition	0
<b>Nbr of Remedial Plug Jobs Rqd - HES</b> Number Of Remedial Plug Jobs Needed After Primary Plug Pumped By HES	0
<b>Nbr of Remedial Sqz Jobs Rqd - HES</b> Number Of Remedial Squeeze Jobs Required After Primary Job Performed By HES	0