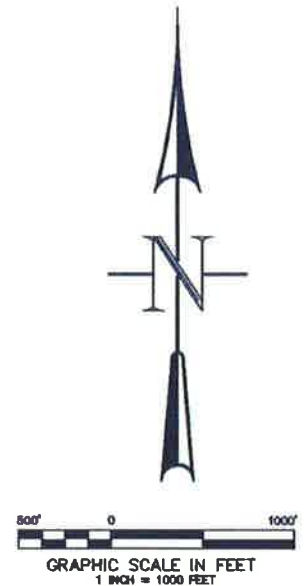
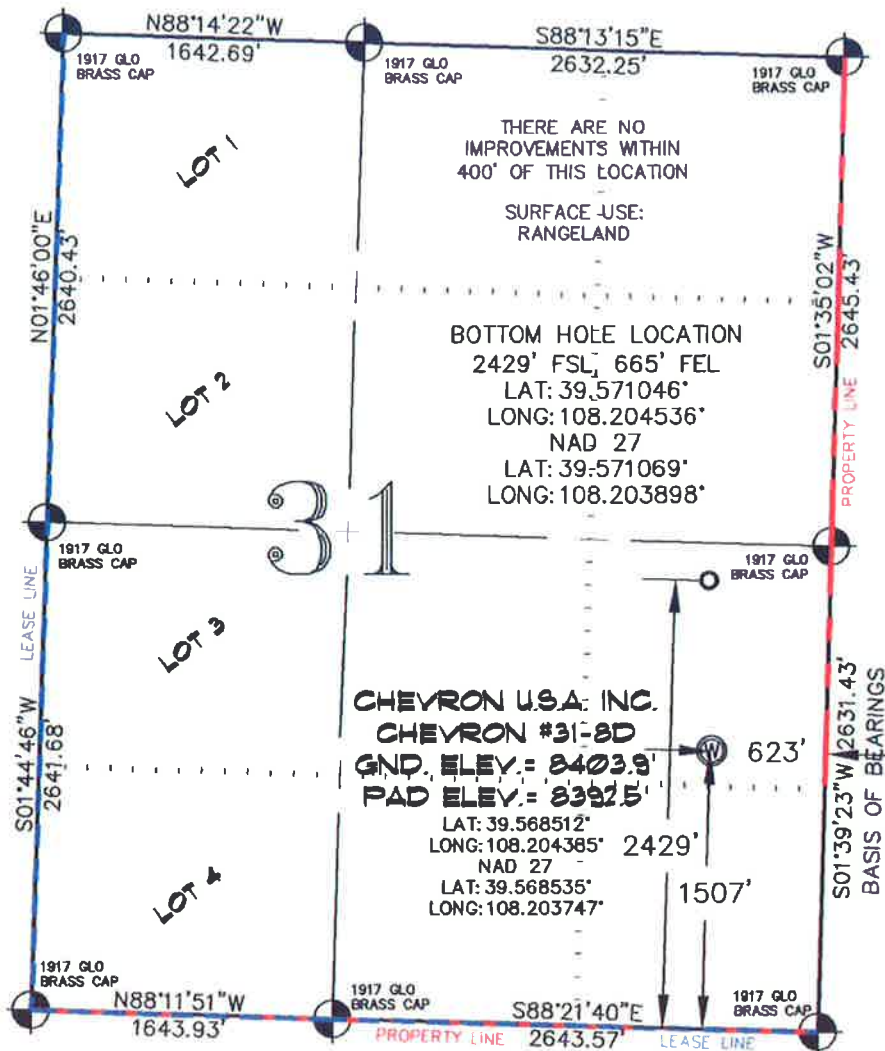


SEC. 31, T. 5 S., R. 96 W. OF THE 6TH P.M.

Chevron 131-596
Pad Location



-LEGEND-

- SECTION CORNER LOCATION
BASED ON GLO RECORD
INFORMATION
- ⊙ FIELD SURVEYED SECTION
CORNER LOCATIONS
- ⊙ FIELD SURVEYED PAD
LOCATION
- CALCULATED BOTTOM
HOLE LOCATION

THIS WELL LOCATION PLAT WAS PREPARED FOR BERRY PETROLEUM COMPANY, TO LOCATE THE CHEVRON #31-8D WELL, 1507 FEET FROM THE SOUTH LINE AND 623 FEET FROM THE EAST LINE IN THE NE 1/4 SE 1/4 OF SECTION 31, T. 5 S., R. 96 W. OF THE 6TH P.M. GARFIELD COUNTY, COLORADO.

REFERENCE NOTES

- 1) T. 5 S., R. 96 W., 6TH P.M. GLO PLAT.
- 2) U.S.G.S. QUAD: CIRLCE DOT GULCH, CO
- 3) ELEVATIONS BASED ON N.A.V.D. 1988
- 4) LATITUDES AND LONGITUDES ARE BASED ON NAD 83, COLORADO CENTRAL ZONE.
- 5) GPS OPERATOR ROBERT WOOD, OBSERVED A PDOP OF 2.5.
- 6) ALL GPS OBSERVATIONS ARE IN COMPLIANCE WITH COGCC RULE NO. 215.
- 7) SURFACE AND BOTTOM HOLE LOCATIONS ARE MEASURED 90° FROM SECTION LINES.

SURVEYOR'S CERTIFICATE

I, George R. Bauer: a Professional Land Surveyor in the State of Colorado do hereby certify that this Survey was made under my direct supervision, and that this Plat represents said Survey.

COLORADO P.L.S. 27925



CONSTRUCTION SURVEYS, INC.
2012 SUNRISE BLVD.
SILT, CO 81652
(970)876-5753

VIEW: 1H

SURVEYED: 09/24/07	SCALE: 1" = 1000'
DRAFTED: 05/03/10	DWG: BERRY/CHEVRON 131-596
CHECKED: 05/04/10	SHEET: 1 of 11