

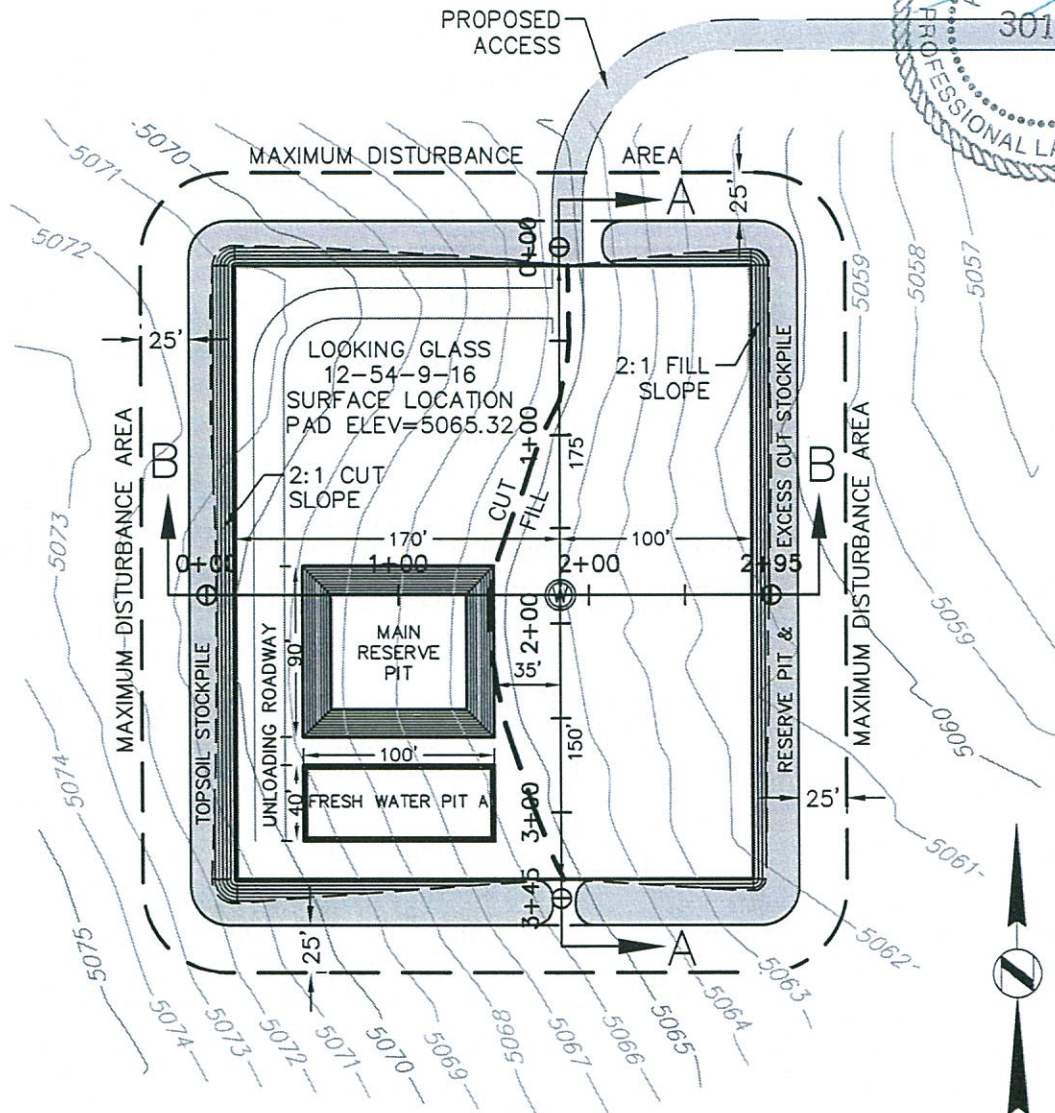
## Site Layout

# LOOKING GLASS 12-54-9-16

High Prairie Surveying of Kiowa, Colorado in accordance with a request from Pine Ridge Oil & Gas, LLC has determined the location of LOOKING GLASS 12-54-9-16 to be 1314 feet FSL, and 886 feet FEL, (90° off Section lines) of SECTION 9, Township 12s, Range 54w of the 6th Principal Meridian, Lincoln County, Colorado.

Date: Staked on 05/23/13 drawn on 05/28/13.

Re: Staked by Elijah Frane  
 Drawn: Drawn by Dustin Cotter



EARTHWORK VOLUME SUMMARY (CY)

	CUT	FILL	5% COMPACTION	EXCESS
6" TOPSOIL	1625			
PAD	555	266	13	279
MAIN PIT	2389			
PIT A	1104			
TOTAL				279

