

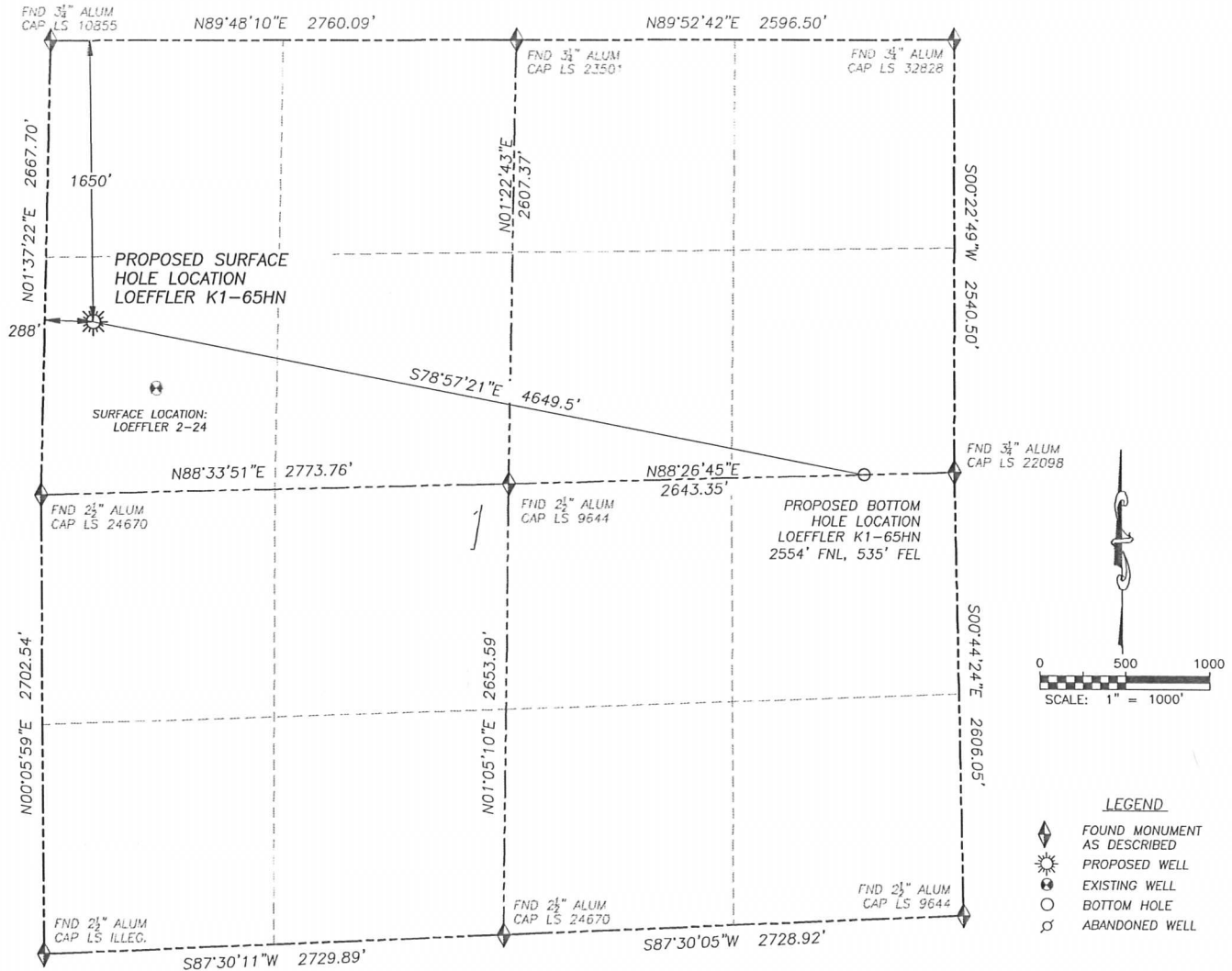
DALEY LAND SURVEYING, INC.

PARKER, CO. 80134

303.953.9841

# WELL LOCATION CERTIFICATE LOEFFLER K1-65HN

SECTION 1, TOWNSHIP 4 NORTH, RANGE 66 WEST OF THE 6TH PRINCIPAL MERIDIAN



## LEGEND

- ◆ FOUND MONUMENT AS DESCRIBED
- ☼ PROPOSED WELL
- EXISTING WELL
- ⊙ BOTTOM HOLE
- ⊘ ABANDONED WELL

**NAD 83 LATITUDE AND LONGITUDE**

LOEFFLER K1-65HN

SURFACE HOLE:

LATITUDE: N40.34390°

LONGITUDE: W104.73388°

ELEVATION: 4666'

FOOTAGE: 1650' FNL, 288' FWL

PDOP: 1.4

QTR/QTR: SW4/NW4

PROP LINE: 288'± WEST

BOTTOM HOLE:

LATITUDE: N40.34145°

LONGITUDE: W104.71751°

FOOTAGE: 2554' FNL, 535' FEL

**NEAREST EXISTING WELL:**

LOEFFLER 2-24 SURFACE HOLE

LATITUDE: N40.34282°

LONGITUDE: W104.73255°

ELEVATION: 4666'

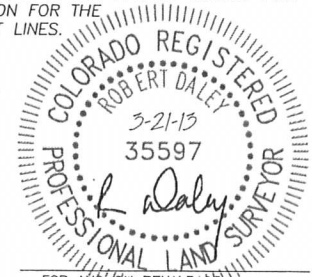
537' SOUTHEAST

IN ACCORDANCE WITH A REQUEST FROM BRIAN JAMES OF NOBLE ENERGY INC., DALEY LAND SURVEYING, INC. HAS DETERMINED THE SURFACE LOCATION OF THE LOEFFLER K1-65HN WELL TO BE 1650' FNL, 288' FWL, AS MEASURED AT NINETY (90) DEGREES FROM THE SECTION LINES OF SECTION 1, T.4N., R.66W. NORTH, RANGE 66 WEST OF THE 6TH PRINCIPAL MERIDIAN, WELD COUNTY, COLORADO. THE BOTTOM HOLE LOCATION, PROVIDED BY THE CLIENT, IS TO BE 2554' FNL, 535' FEL.

I HEREBY CERTIFY THAT THIS WELL LOCATION CERTIFICATE WAS PREPARED BY ME OR UNDER MY DIRECT SUPERVISION, THAT THE WORK WAS COMPLETED ON 2/20/2013 FOR AND ON BEHALF OF NOBLE ENERGY, INC., AND THAT THIS MAP DOES NOT REPRESENT A BOUNDARY SURVEY, IT IS NOT A LAND SURVEY PLAT OR AN IMPROVEMENT SURVEY PLAT AND IT IS NOT TO BE RELIED UPON FOR THE ESTABLISHMENT OF FENCE, BUILDING OR OTHER FUTURE IMPROVEMENT LINES.

## NOTES:

- 1) BEARINGS FOR THIS MAP ARE ASSUMED AND BASED UPON GPS OBSERVATIONS MADE BETWEEN MONUMENTS LOCATED AT THE NORTHWEST CORNER AND NORTH QUARTER CORNER OF SECTION 1, T.4N., R.66W.
- 2) HORIZONTAL DATUM IS NAD83.
- 3) VERTICAL DATUM IS NAVD88 AND ORIGINATES FROM LOCAL C.O.R.S. STATIONS, UTILIZING THE GEOID09 MODEL.
- 4) SEE LOCATION DRAWING FOR VISIBLE IMPROVEMENTS WITHIN 400' OF PROPOSED DISTURBED AREA.
- 5) SURFACE USE: AGRICULTURAL.

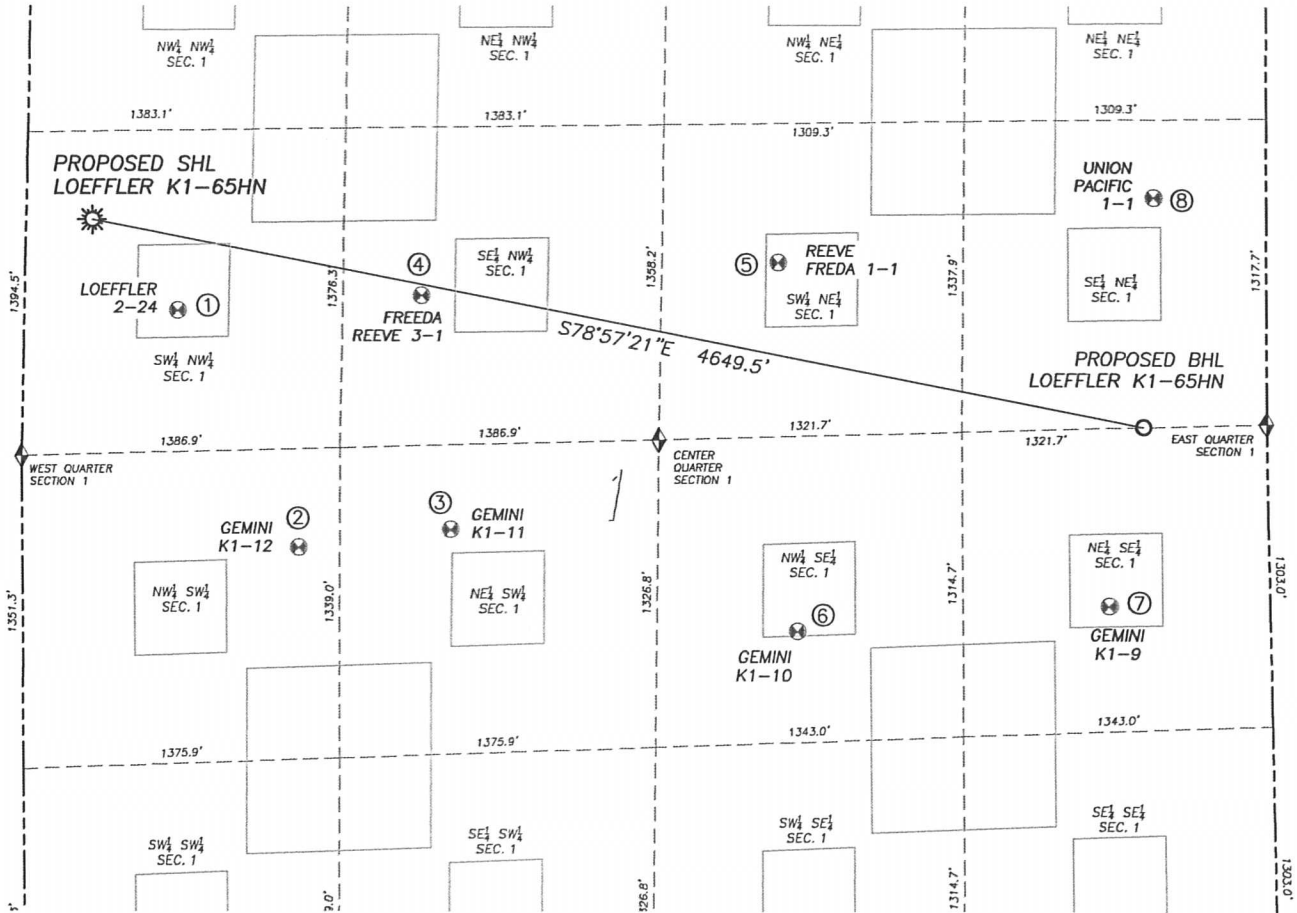


NOTICE: According to Colorado law you MUST commence any legal action based upon any defect in this W.L.C. within three years after you first discover such defect. In no event may any action based upon any such defect in this W.L.C. be commenced more than ten years from the date of the certification shown herein.

FOR AND ON BEHALF OF  
DALEY LAND SURVEYING INC.,  
Robert Daley, PLS 35597

# SITE SKETCH LOEFFLER K1-65HN

SECTION 1, TOWNSHIP 4 NORTH, RANGE 66 WEST OF THE 6TH PRINCIPAL MERIDIAN



	Well Name	Qtr - Qtr	Footage		Latitude	Longitude	Elevation	PDOP
1	LOEFFLER 2-24	SW NW	2042' FNL	667' FWL	N40.34282	W104.73255	4666	2.0
2	GEMINI K1-12	NW SW	2252' FSL	1203' FWL	N40.34002	W104.73070	4687	2.1
3	GEMINI K1-11	NE SW	2302' FSL	1866' FWL	N40.34023	W104.72832	4685	1.9
4	FREEDA REEVE 3-1	SE NW	1982' FNL	1726' FWL	N40.34300	W104.72875	4665	1.9
5	REEVE FREDA 1-1	SW NE	1843' FNL	2120' FEL	N40.34339	W104.72318	4673	1.9
6	GEMINI K1-10	NW SE	1797' FSL	2055' FEL	N40.33902	W104.72292	4705	1.8
7	GEMINI K1-9	NE SE	1847' FSL	696' FEL	N40.33932	W104.71805	4697	1.8
8	UNION PACIFIC 1-1	SE NE	1564' FNL	490' FEL	N40.34417	W104.71732	4692	1.4

NOTES:  
 1. THIS DOES NOT REPRESENT A BOUNDARY SURVEY  
 2. HORIZONTAL DATUM IS NAD83  
 3. VERTICAL DATUM IS NAVD88 AND ORIGINATES FROM  
 LOCAL C.O.R.S. STATIONS, UTILIZING THE GEOID09 MODEL.

**LEGEND**  
 FOUND MONUMENT AS DESCRIBED  
 PROPOSED WELL  
 EXISTING WELL  
 BOTTOM HOLE  
 ABANDONED WELL

