

CEMENT BOND LOG & V.D.
GAMMA-RAY & C.C.L.

Company	RENEGADE OIL & GAS
Well	STATE OF COLORADO "U" 2
Field	LOWRY
County	ARAPAHOE
State	COLORADO

Company	RENEGADE OIL & GAS
Well	STATE OF COLORADO "U" 2
Field	LOWRY
County	ARAPAHOE
	State
	COLORADO

Location: AP# : 0500050656000000 Other Services	SEC 30 TWP 5S RGE 64W			Elevation	
	Permanent Datum	GL	Elevation		5965'
	Log Measured From	KB			
	Drilling Measured From	KB			
					K.B. 5965' D.F. NA G.L. 5965'

Date	6-3-13		
Run Number	1		
Depth Driller	8615'		
Depth Logger	2426'		
Bottom Logged Interval	2414'		
Top Log Interval	SURFACE		
Open Hole Size	7 7/8"		
Type Fluid	WATER		
Density / Viscosity			
Max. Recorded Temp.	NA		
Estimated Cement Top	542'		
Time Well Ready	ROA		
Time Logger on Bottom	AM		
Equipment Number	24		
Location	FT. MORGAN		
Recorded By	JOHN HOLLIS		
Witnessed By	ED INGVE		

Borehole Record				Lining Record			
Run Number	Bit	From	To	Size	Weight	From	To
Casing Record		Size		Wgt/Ft		Top	Bottom
Surface String							
Prot. String							
Production String		5.5"		15.5#			
Liner							


<<< Fold Here >>>

All interpretations are opinions based on inferences from electrical or other measurements and we cannot and do not guarantee the accuracy or correctness of any interpretation, and we shall not, except in the case of gross or willful negligence on our part, be liable or responsible for any loss, costs, damages, or expenses incurred or sustained by anyone resulting from any interpretation made by any of our officers, agents or employees. These interpretations are also subject to our general terms and conditions set out in our current Price Schedule.

Comments

S.O.# 2-203950
CORRECTED 6 FEET TO GROUND LEVEL BEING ZERO
NORTH OF ROAD 50 & ROAD 107

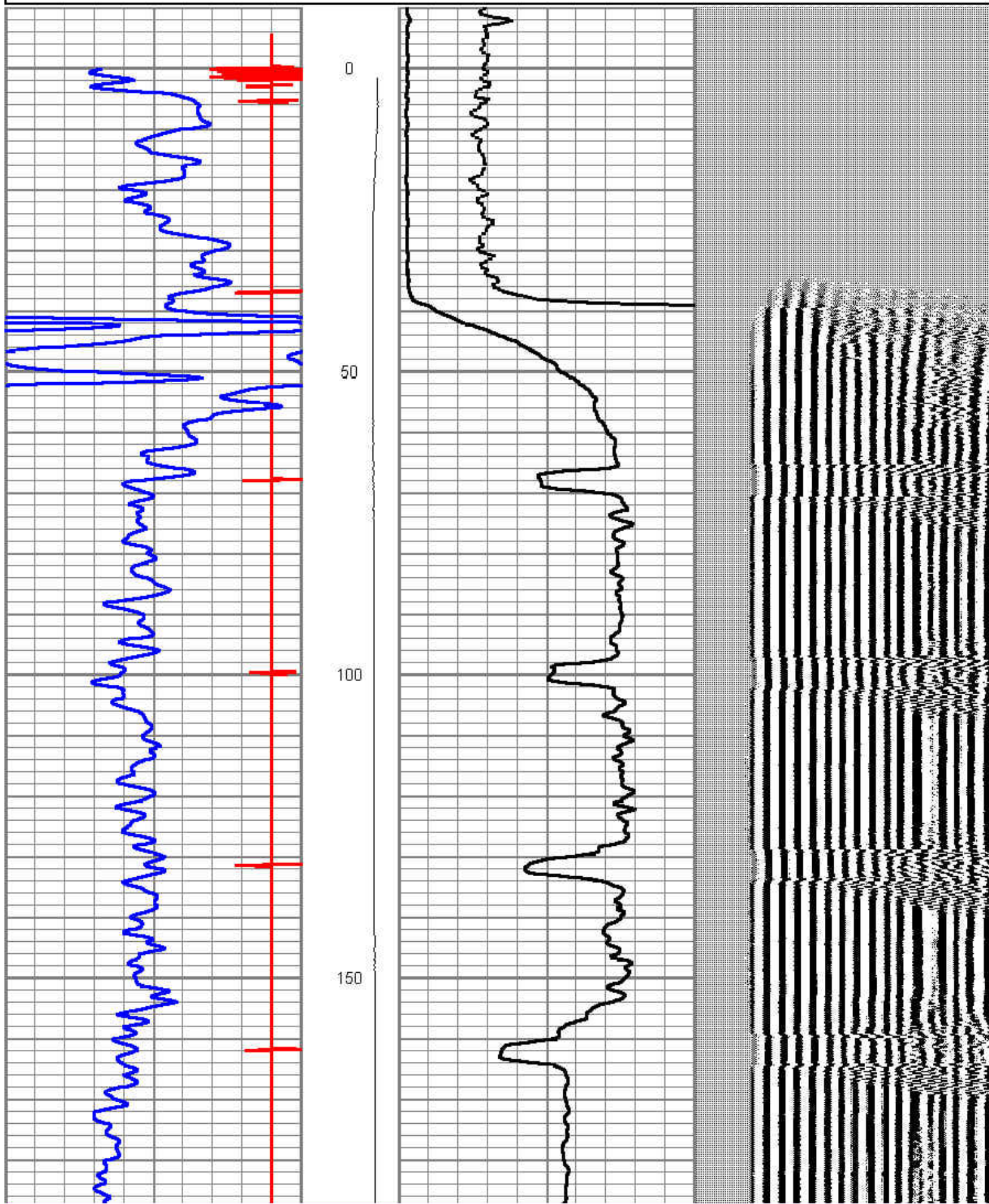
THANK YOU FOR USING PIONEER ENERGY SERVICES

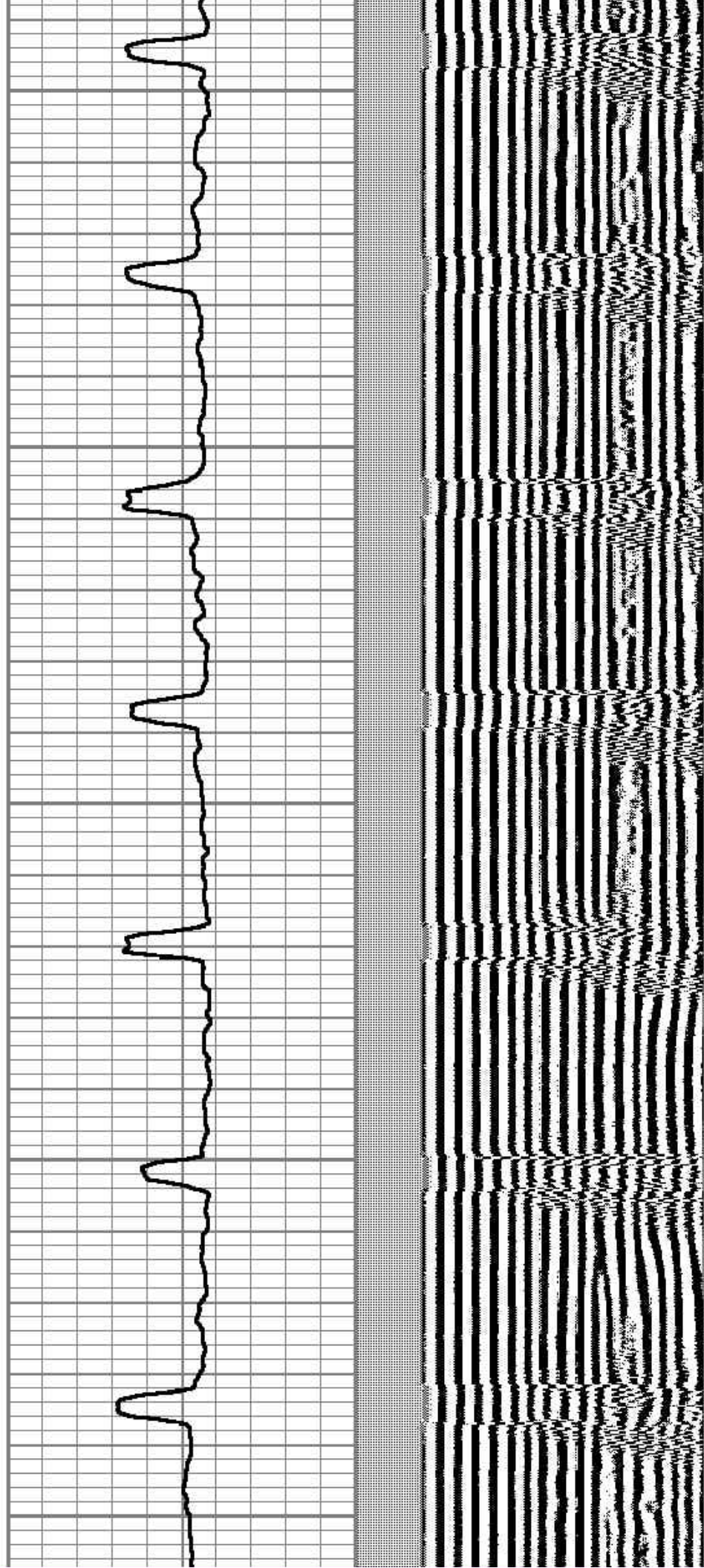
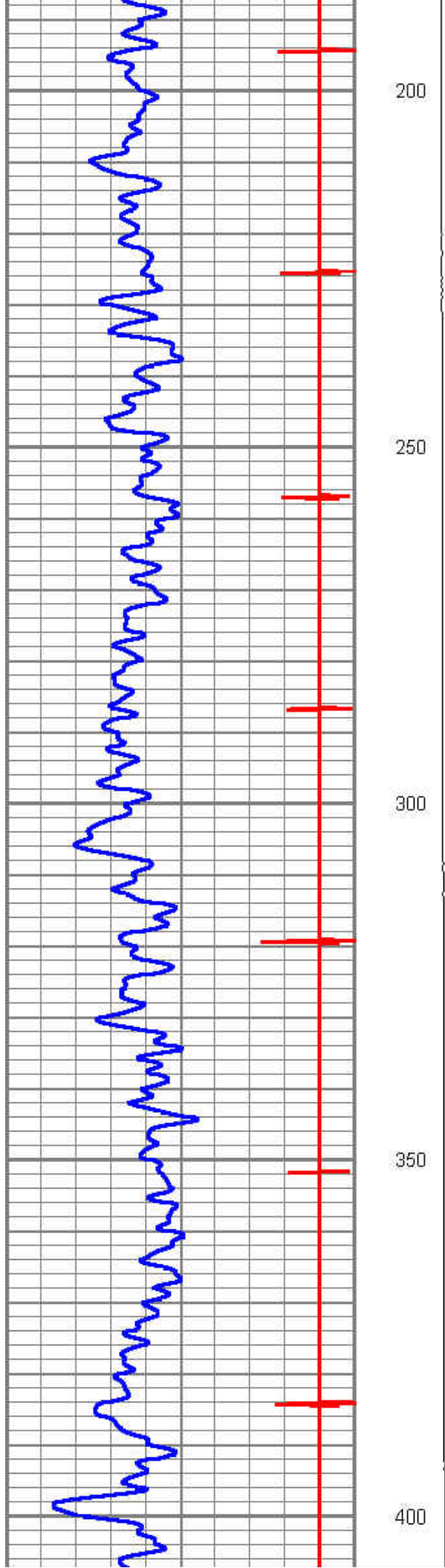
Sensor	Offset (ft)	Schematic	Description	Len (ft)	OD (in)	Wt (lb)
			SDSCHD Cable Head for Testing	1.00	1.44	1.00

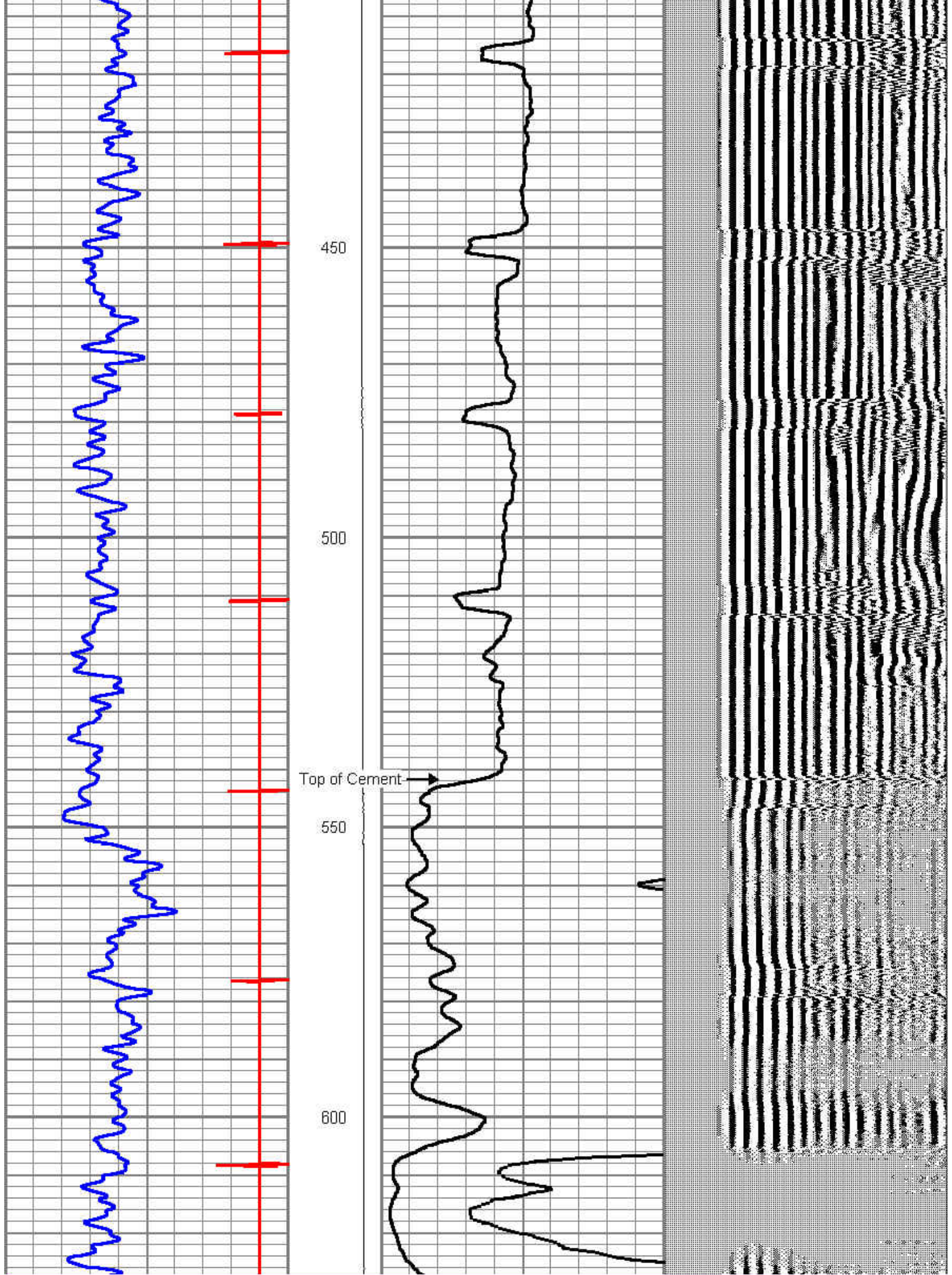
			cent.-Probe (cent) probe cent.	2.88	2.75	25.00
			cent.-Probe (cent) probe cent.	2.88	2.75	25.00
WVF3	15.35		CBL-Probe (110215) 2.75 digital probe	8.75	2.75	106.50
WVF5	14.35					
			cent.-Probe (cent) probe cent.	2.88	2.75	25.00
CCL	7.00		CCL-Probe (081119)	2.02	2.75	
GR	3.67		GR-Probe275dig (110249) Probe Digital Gamma-Ray	3.33	2.75	57.00
			cent.-Probe (cent) probe cent.	2.88	2.75	25.00
Dataset: state of colorado unit #2.db: field/well/run1/pass1 Total Length: 26.60 ft Total Weight: 264.50 lb O.D.: 2.75 in						

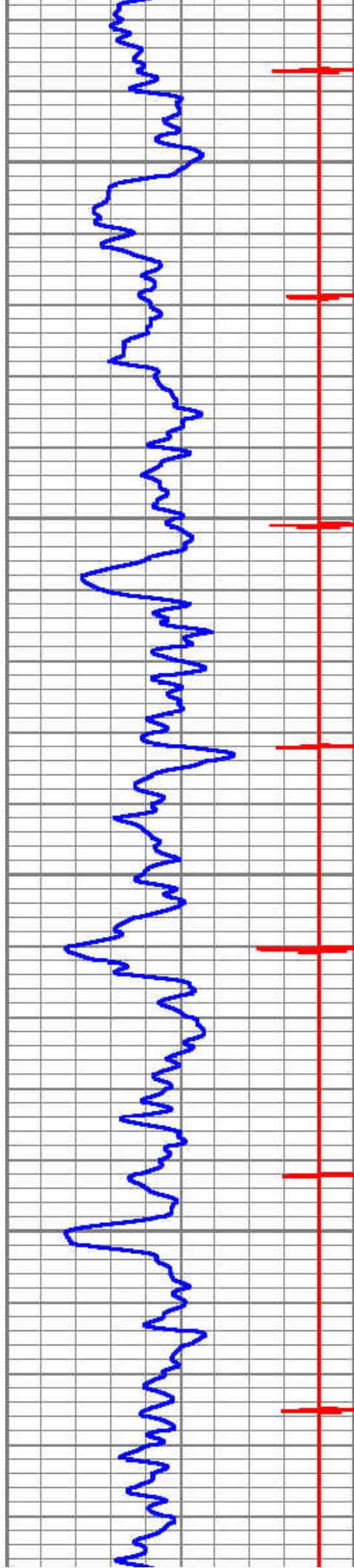
Database File: state of colorado unit #2.db
 Dataset Pathname: pass1
 Presentation Format: cbl_dr
 Dataset Creation: Mon Jul 03 09:58:04 2012 by Log SCH 120428

9	Collar Locator	-1	LTEN	0	Amplified Amplitude (mV)	10	200	Variable Density	1200
0	Gamma Ray (GAPI)	150	0	(lb)1000	0	Amplitude (mV)	100		







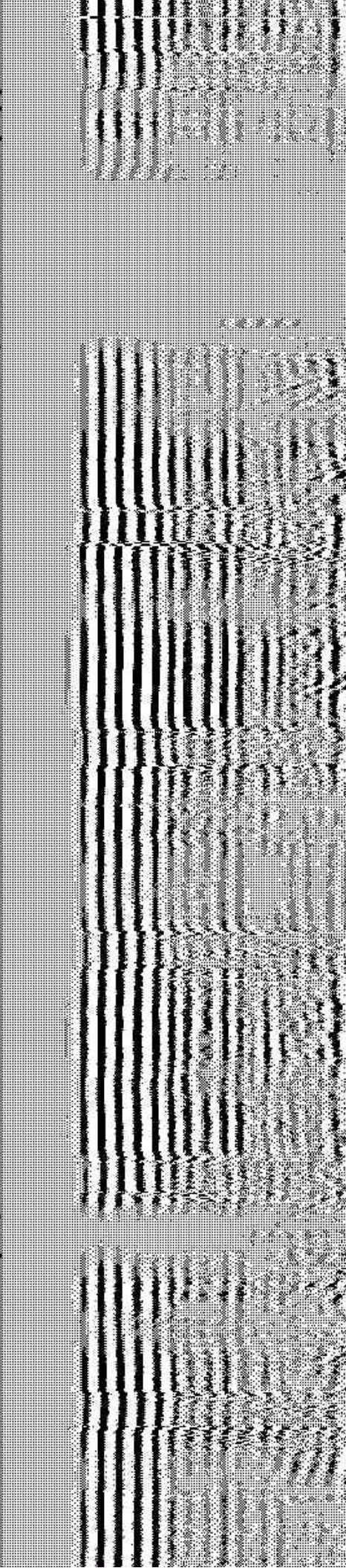
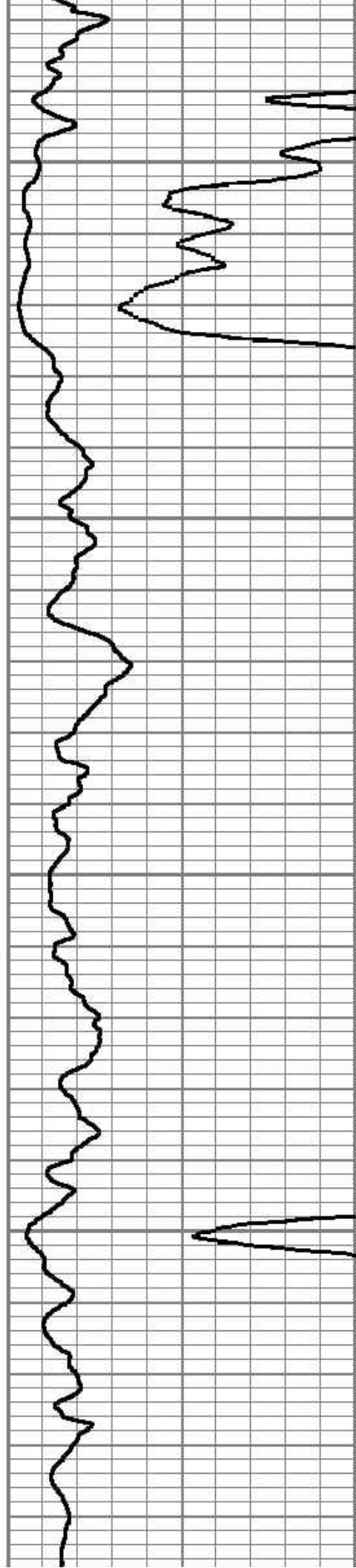


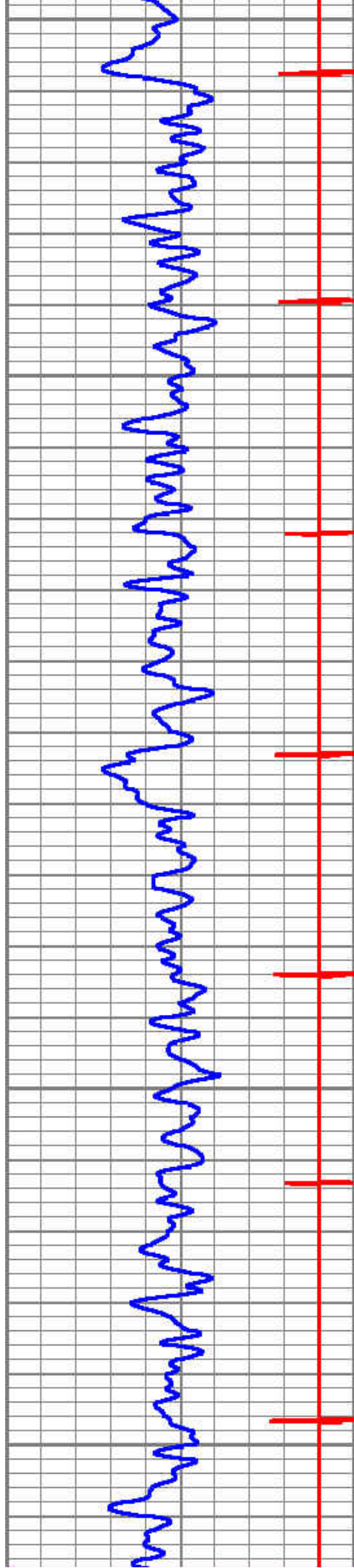
650

700

750

800





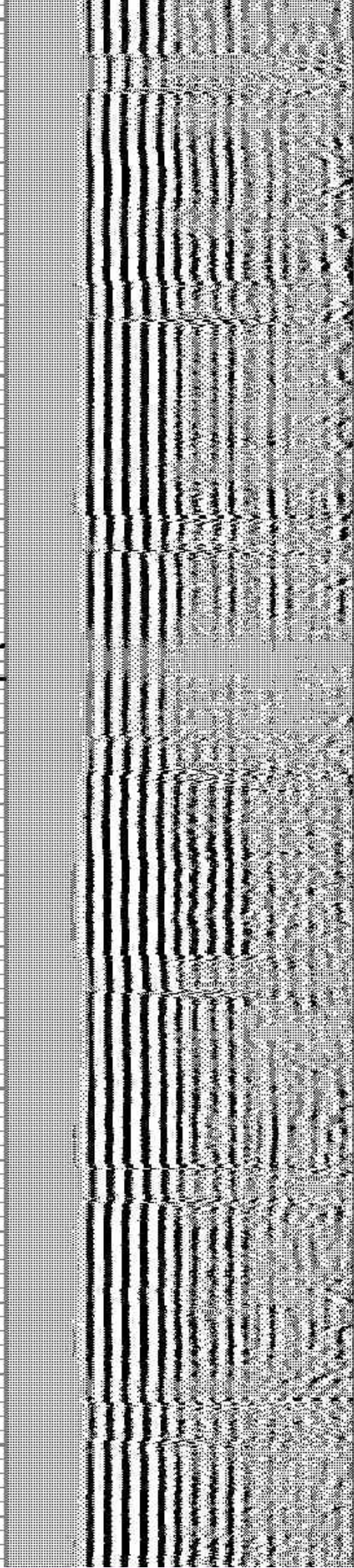
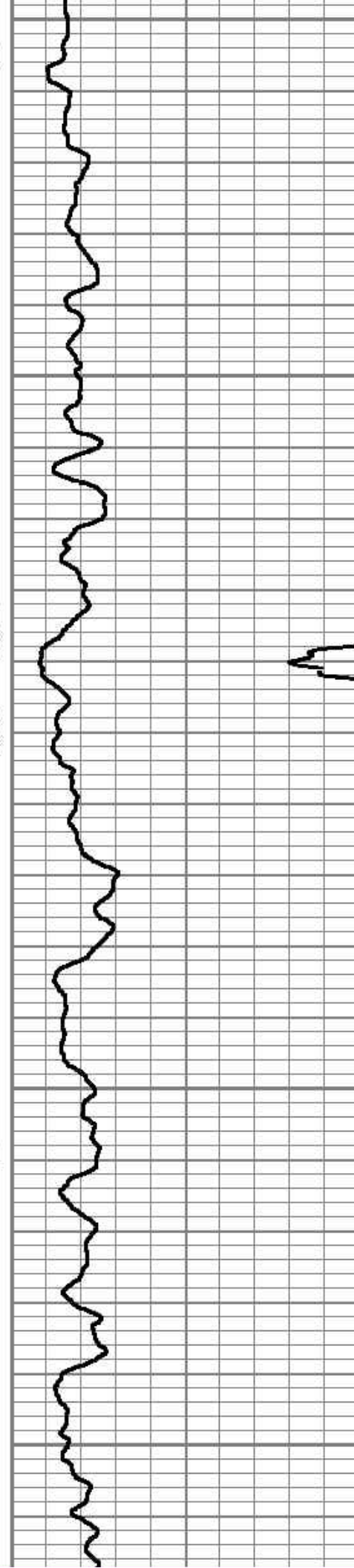
850

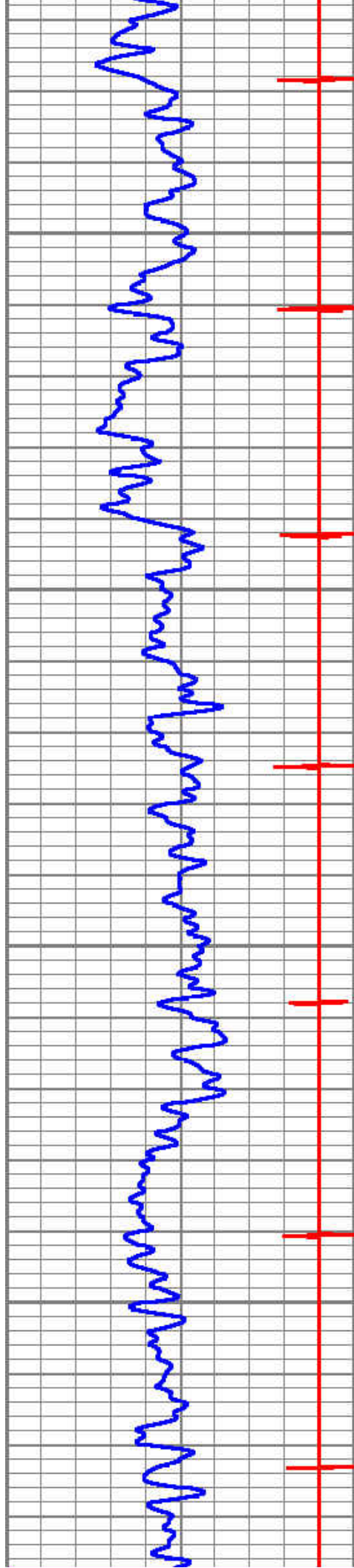
900

950

1000

1050



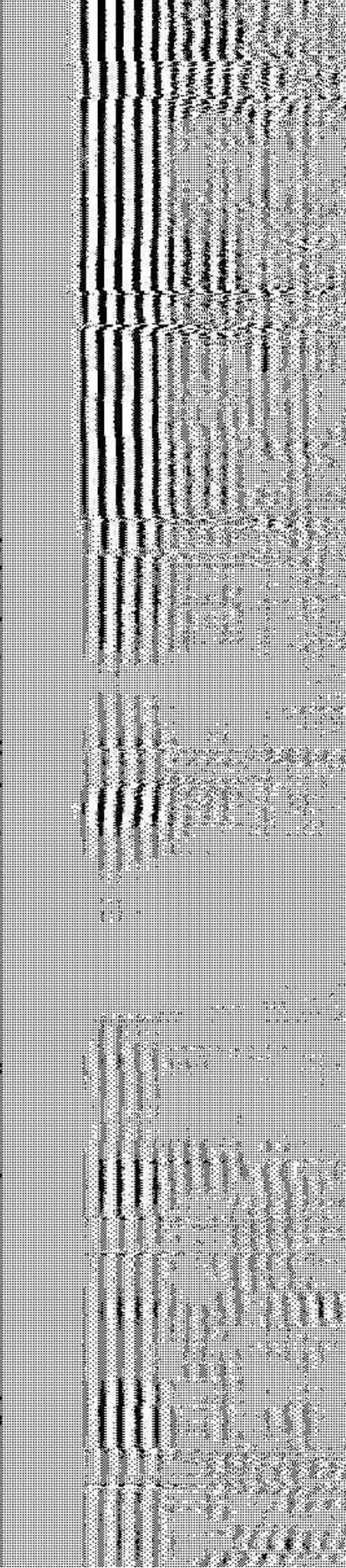
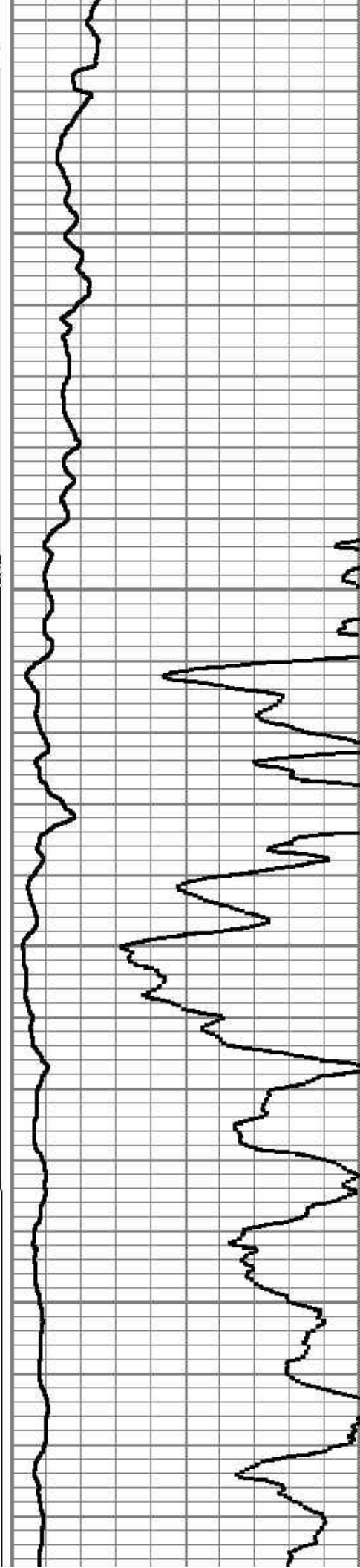


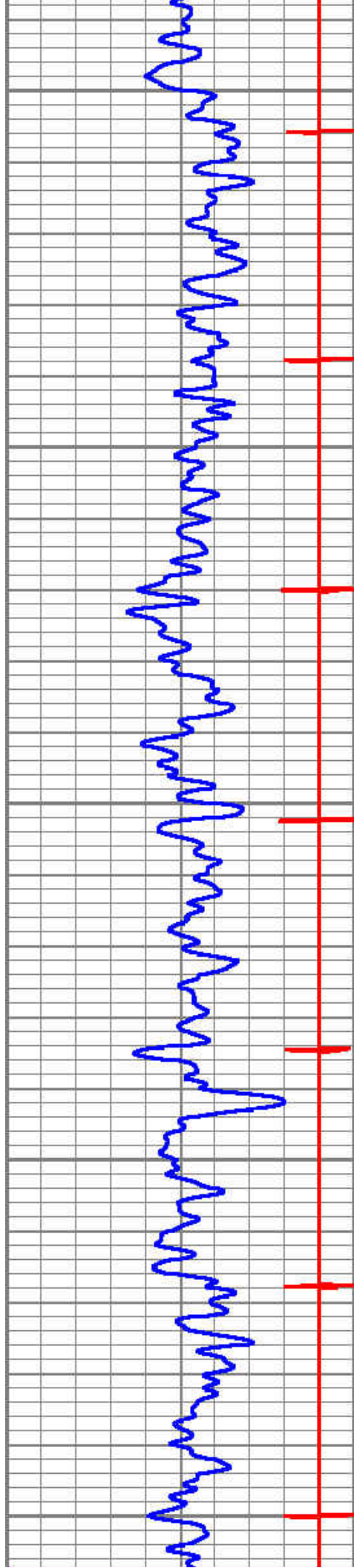
1100

1150

1200

1250





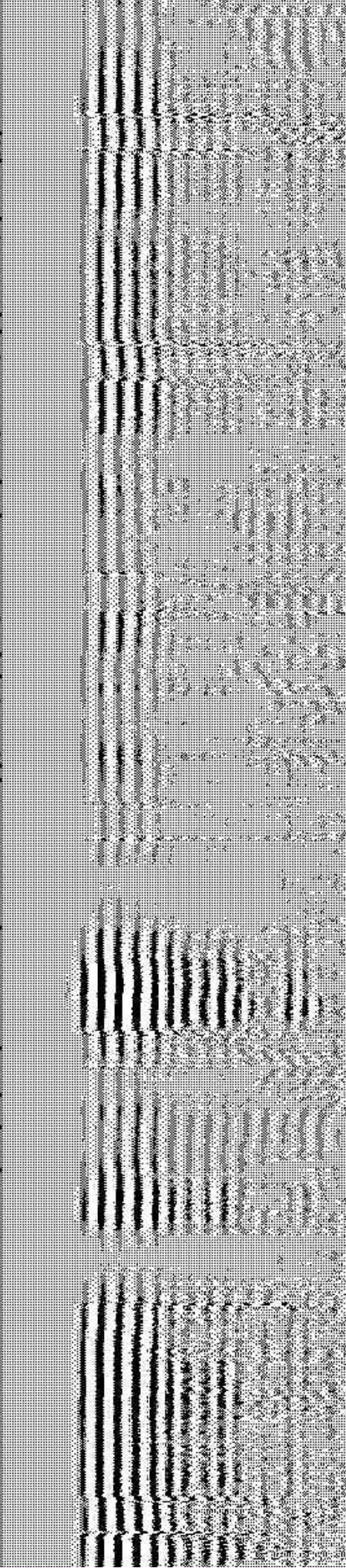
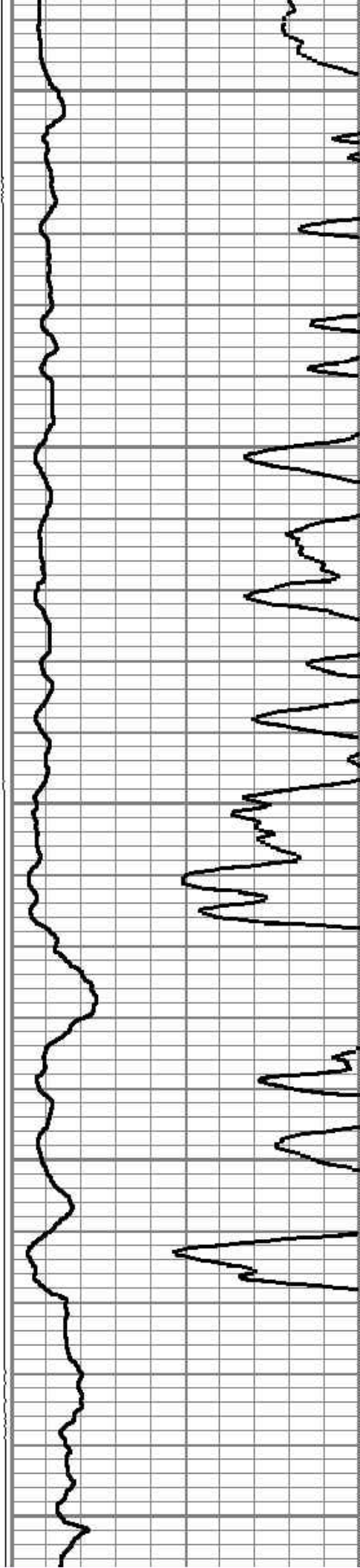
1300

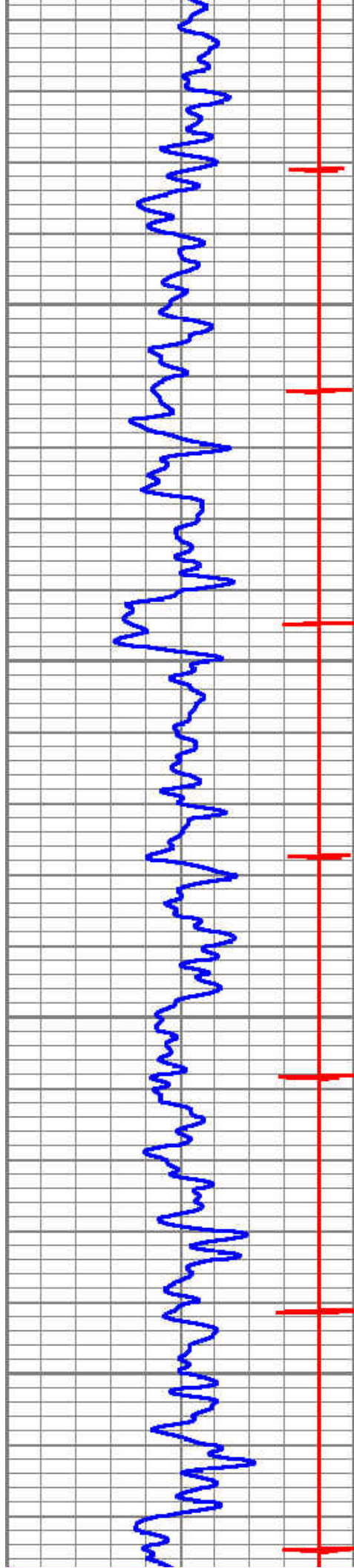
1350

1400

1450

1500



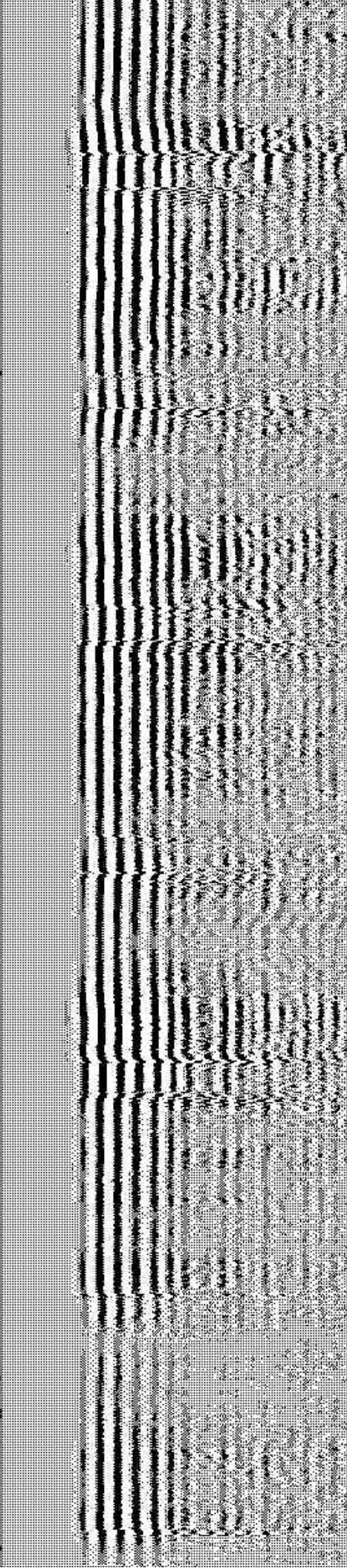
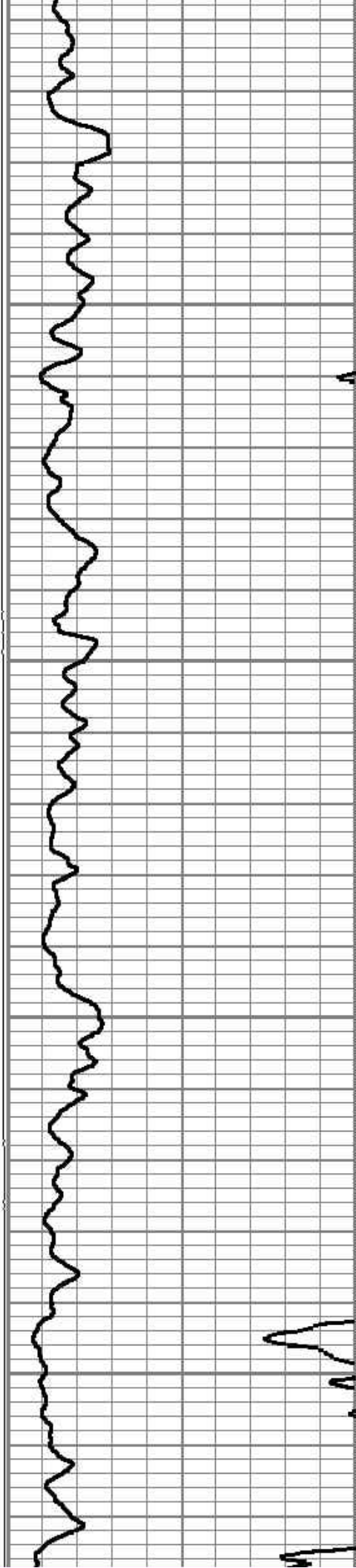


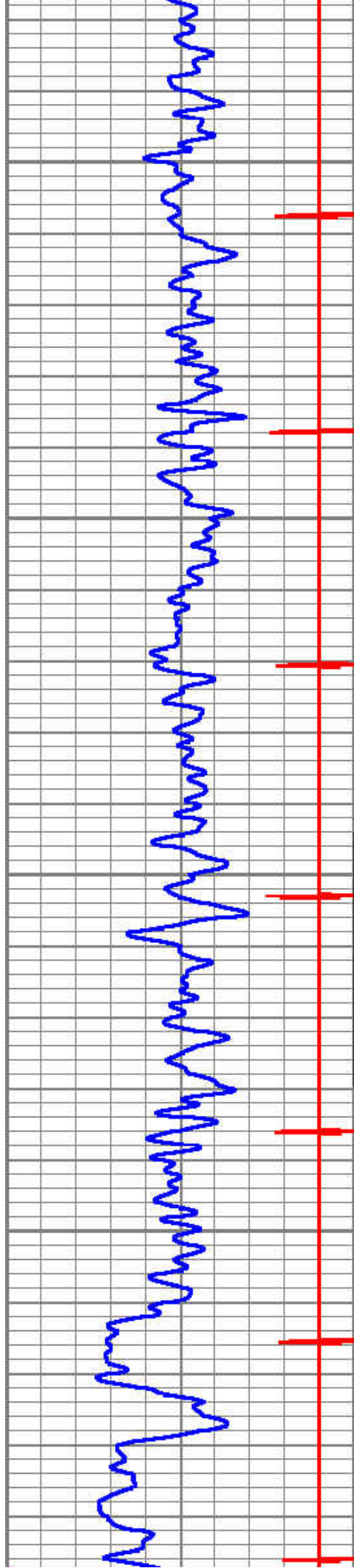
1550

1600

1650

1700



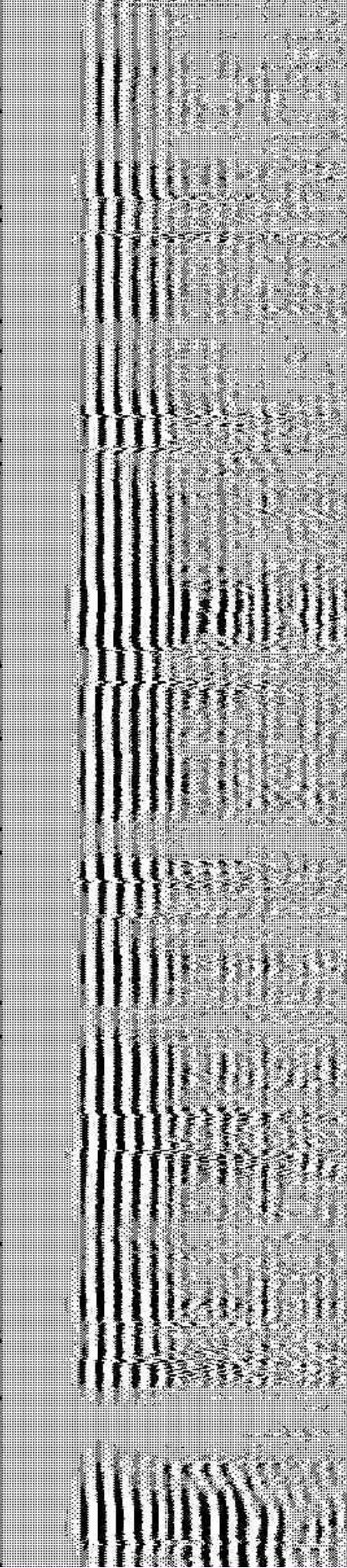
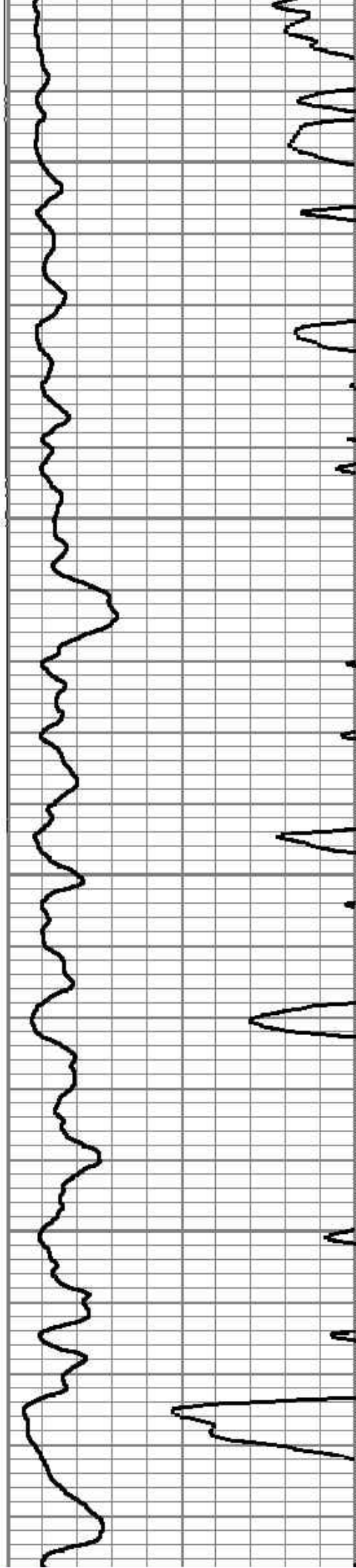


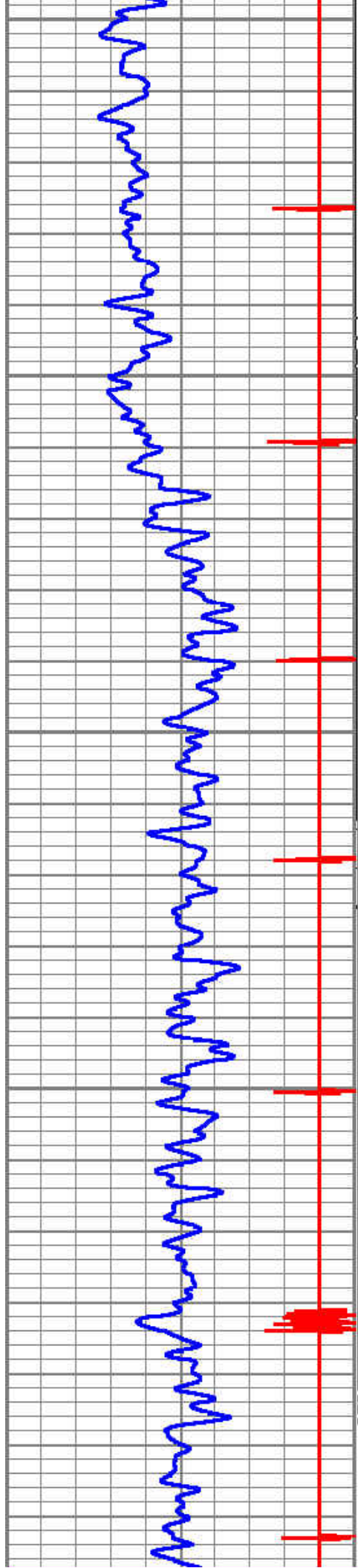
1750

1800

1850

1900





1950

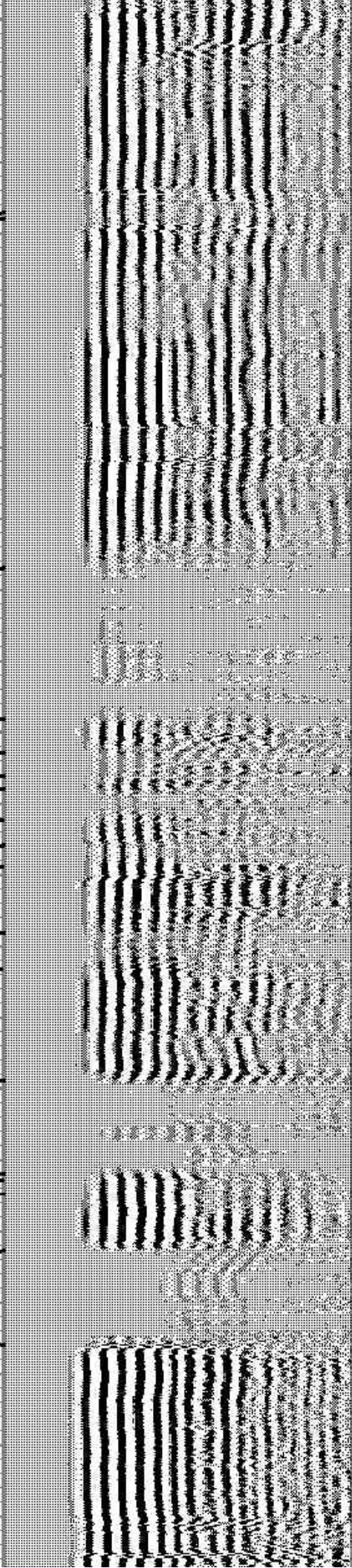
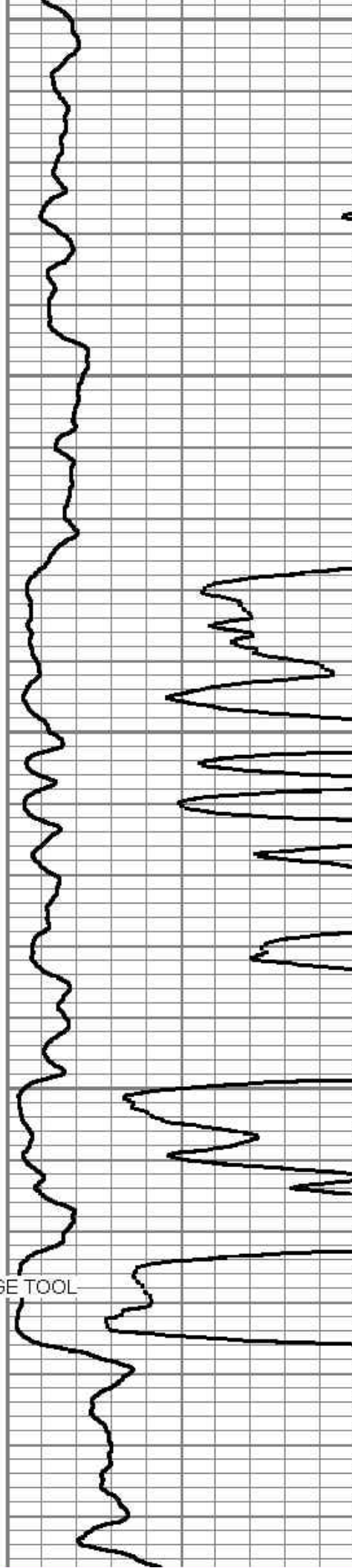
2000

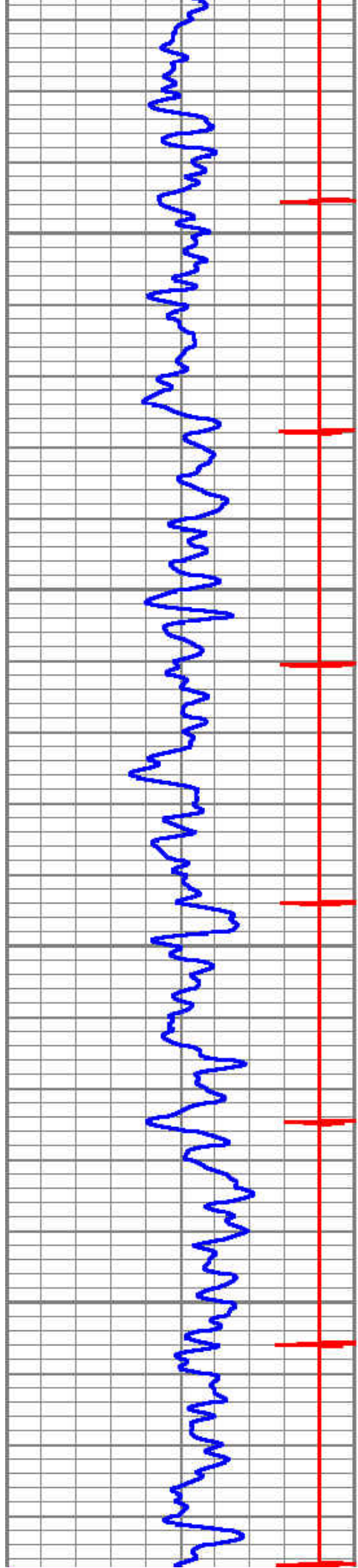
2050

2100

2150

← STAGE TOOL





2200

2250

2300

2350

