

# Synergy Resources

Well Name: **SRC Kelly Farms 22-4-3NHZ**

Surface Location: SRC Kelly Farms Pad Sec.4-T5N-R66W  
North American Datum 1983 , US State Plane 1983 , Colorado Northern Zone

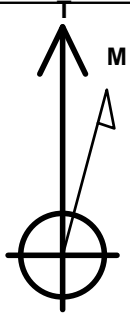
Ground Elevation: 4753.0

+N/-S	+E/-W	Northing	Easting	Latitude	Longitude	Slot
0.0	0.0	1400847.56	3199112.80	40.431524	-104.784739	

Original Well Elev WELL @ 4766.0ft (Original Well Elev)

## WELLBORE TARGET DETAILS

Name	TVD	+N/-S	+E/-W	Shape
SHL 2130'FNL & 2330'FWL, Sec.4	1.0	0.0	0.0	Point
BHL 2180'FNL & 2118'FWL, Sec. 3	7051.0	-48.6	5134.4	Point



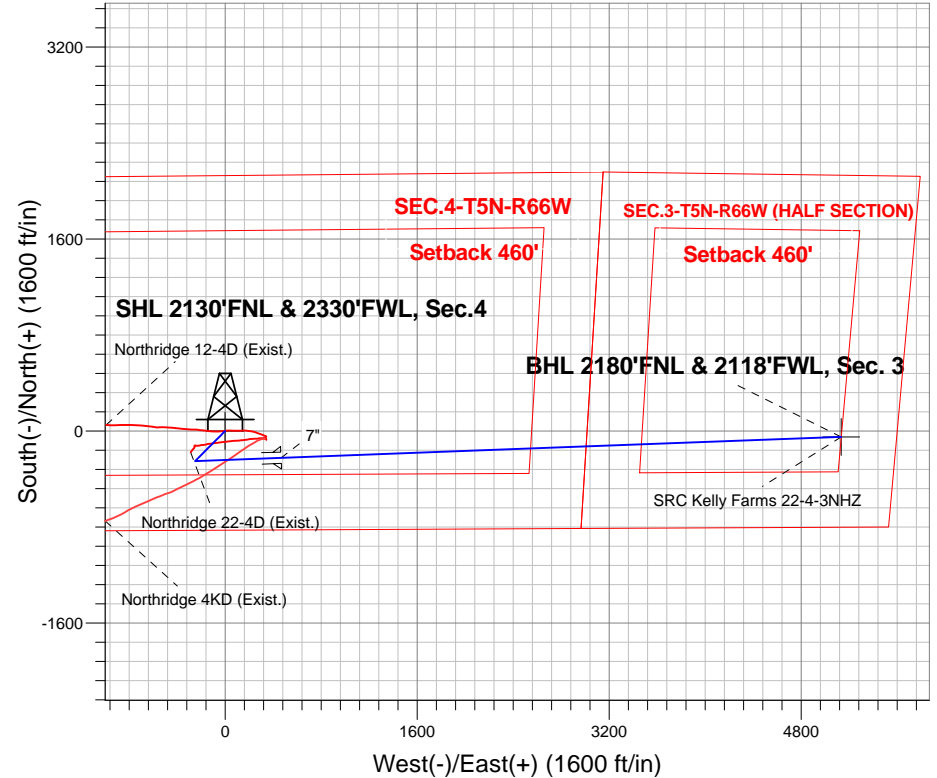
Azimuths to True North  
Magnetic North: 8.62°

Magnetic Field  
Strength: 52943.1nT  
Dip Angle: 67.01°  
Date: 5/20/2013  
Model: IGRF2010

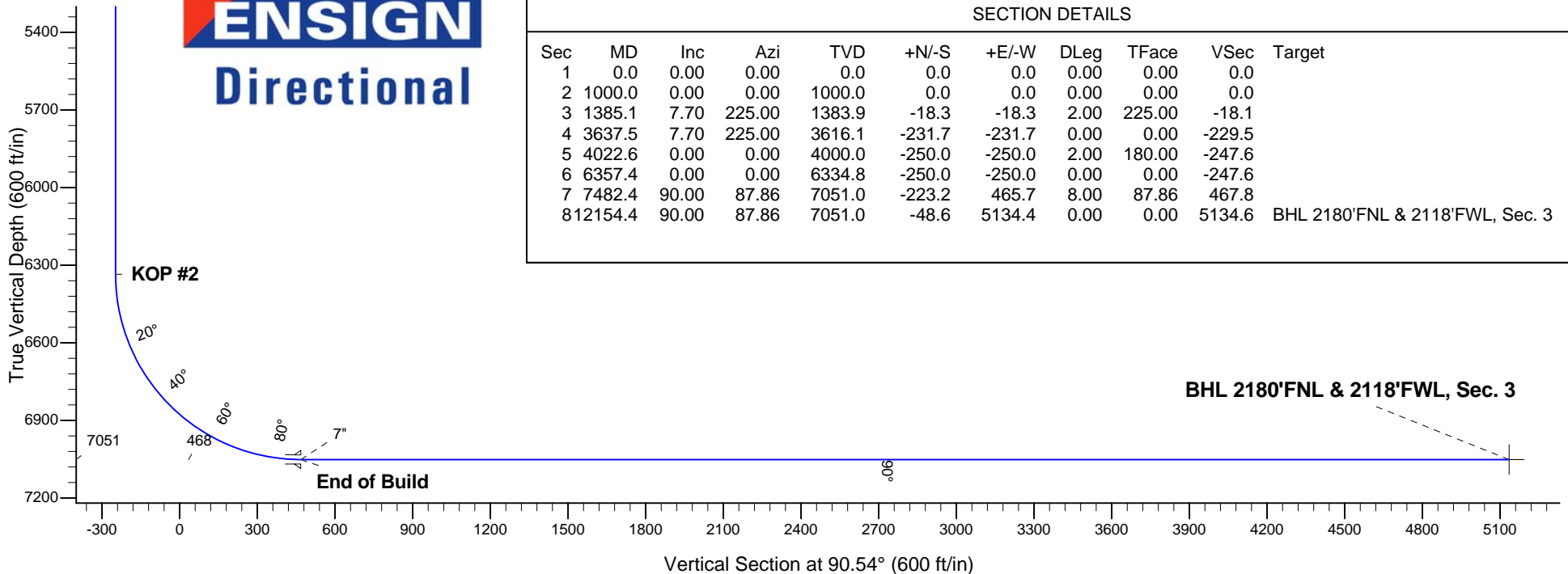
SRC Kelly Farms Pad Sec.4-T5N-R66W  
SRC Kelly Farms 22-4-3NHZ  
Plan #1 (5-20-13)  
11:29, May 29 2013

## ANNOTATIONS

TVD	MD	Annotation
1000.0	1000.0	KOP
6334.8	6357.4	KOP #2
7051.0	7482.4	End of Build



**ENSIGN**  
Directional



## SECTION DETAILS

Sec	MD	Inc	Azi	TVD	+N/-S	+E/-W	DLeg	TFace	VSec	Target
1	0.0	0.00	0.00	0.0	0.0	0.0	0.00	0.00	0.0	
2	1000.0	0.00	0.00	1000.0	0.0	0.0	0.00	0.00	0.0	
3	1385.1	7.70	225.00	1383.9	-18.3	-18.3	2.00	225.00	-18.1	
4	3637.5	7.70	225.00	3616.1	-231.7	-231.7	0.00	0.00	-229.5	
5	4022.6	0.00	0.00	4000.0	-250.0	-250.0	2.00	180.00	-247.6	
6	6357.4	0.00	0.00	6334.8	-250.0	-250.0	0.00	0.00	-247.6	
7	7482.4	90.00	87.86	7051.0	-223.2	465.7	8.00	87.86	467.8	
8	12154.4	90.00	87.86	7051.0	-48.6	5134.4	0.00	0.00	5134.6	BHL 2180'FNL & 2118'FWL, Sec. 3



## **Synergy Resources**

**SEC.4-T5N-R66W**

**SRC Kelly Farms Pad Sec.4-T5N-R66W**

**SRC Kelly Farms 22-4-3NHZ**

**Wellbore #1**

**Plan: Plan #1 (5-20-13)**

## **Standard Planning Report**

**29 May, 2013**

Plan Sections										
Measured Depth (ft)	Inclination (°)	Azimuth (°)	Vertical Depth (ft)	+N/-S (ft)	+E/-W (ft)	Dogleg Rate (°/100ft)	Build Rate (°/100ft)	Turn Rate (°/100ft)	TFO (°)	Target
0.0	0.00	0.00	0.0	0.0	0.0	0.00	0.00	0.00	0.00	
1,000.0	0.00	0.00	1,000.0	0.0	0.0	0.00	0.00	0.00	0.00	
1,385.1	7.70	225.00	1,383.9	-18.3	-18.3	2.00	2.00	0.00	225.00	
3,637.5	7.70	225.00	3,616.1	-231.7	-231.7	0.00	0.00	0.00	0.00	
4,022.6	0.00	0.00	4,000.0	-250.0	-250.0	2.00	-2.00	0.00	180.00	
6,357.4	0.00	0.00	6,334.8	-250.0	-250.0	0.00	0.00	0.00	0.00	
7,482.4	90.00	87.86	7,051.0	-223.2	465.7	8.00	8.00	0.00	87.86	
12,154.4	90.00	87.86	7,051.0	-48.6	5,134.4	0.00	0.00	0.00	0.00	BHL 2180'FNL & 2180'FNL

**Database:** Landmark  
**Company:** Synergy Resources  
**Project:** SEC.4-T5N-R66W  
**Site:** SRC Kelly Farms Pad Sec.4-T5N-R66W  
**Well:** SRC Kelly Farms 22-4-3NHZ  
**Wellbore:** Wellbore #1  
**Design:** Plan #1 (5-20-13)

**Local Co-ordinate Reference:** Well SRC Kelly Farms 22-4-3NHZ  
**TVD Reference:** WELL @ 4766.0ft (Original Well Elev)  
**MD Reference:** WELL @ 4766.0ft (Original Well Elev)  
**North Reference:** True  
**Survey Calculation Method:** Minimum Curvature

#### Planned Survey

Measured Depth (ft)	Inclination (°)	Azimuth (°)	Vertical Depth (ft)	+N/-S (ft)	+E/-W (ft)	Vertical Section (ft)	Dogleg Rate (°/100ft)	Build Rate (°/100ft)	Turn Rate (°/100ft)
0.0	0.00	0.00	0.0	0.0	0.0	0.0	0.00	0.00	0.00
1.0	0.00	0.00	1.0	0.0	0.0	0.0	0.00	0.00	0.00
<b>SHL 2130'FNL &amp; 2330'FWL, Sec.4</b>									
100.0	0.00	0.00	100.0	0.0	0.0	0.0	0.00	0.00	0.00
200.0	0.00	0.00	200.0	0.0	0.0	0.0	0.00	0.00	0.00
300.0	0.00	0.00	300.0	0.0	0.0	0.0	0.00	0.00	0.00
400.0	0.00	0.00	400.0	0.0	0.0	0.0	0.00	0.00	0.00
500.0	0.00	0.00	500.0	0.0	0.0	0.0	0.00	0.00	0.00
600.0	0.00	0.00	600.0	0.0	0.0	0.0	0.00	0.00	0.00
700.0	0.00	0.00	700.0	0.0	0.0	0.0	0.00	0.00	0.00
800.0	0.00	0.00	800.0	0.0	0.0	0.0	0.00	0.00	0.00
900.0	0.00	0.00	900.0	0.0	0.0	0.0	0.00	0.00	0.00
1,000.0	0.00	0.00	1,000.0	0.0	0.0	0.0	0.00	0.00	0.00
<b>KOP</b>									
1,100.0	2.00	225.00	1,100.0	-1.2	-1.2	-1.2	2.00	2.00	0.00
1,200.0	4.00	225.00	1,199.8	-4.9	-4.9	-4.9	2.00	2.00	0.00
1,300.0	6.00	225.00	1,299.5	-11.1	-11.1	-11.0	2.00	2.00	0.00
1,385.1	7.70	225.00	1,383.9	-18.3	-18.3	-18.1	2.00	2.00	0.00
1,400.0	7.70	225.00	1,398.7	-19.7	-19.7	-19.5	0.00	0.00	0.00
1,500.0	7.70	225.00	1,497.8	-29.2	-29.2	-28.9	0.00	0.00	0.00
1,600.0	7.70	225.00	1,596.9	-38.6	-38.6	-38.3	0.00	0.00	0.00
1,700.0	7.70	225.00	1,696.0	-48.1	-48.1	-47.7	0.00	0.00	0.00
1,800.0	7.70	225.00	1,795.1	-57.6	-57.6	-57.0	0.00	0.00	0.00
1,900.0	7.70	225.00	1,894.2	-67.1	-67.1	-66.4	0.00	0.00	0.00
2,000.0	7.70	225.00	1,993.3	-76.5	-76.5	-75.8	0.00	0.00	0.00
2,100.0	7.70	225.00	2,092.4	-86.0	-86.0	-85.2	0.00	0.00	0.00
2,200.0	7.70	225.00	2,191.5	-95.5	-95.5	-94.6	0.00	0.00	0.00
2,300.0	7.70	225.00	2,290.6	-105.0	-105.0	-104.0	0.00	0.00	0.00
2,400.0	7.70	225.00	2,389.7	-114.5	-114.5	-113.4	0.00	0.00	0.00
2,500.0	7.70	225.00	2,488.8	-123.9	-123.9	-122.7	0.00	0.00	0.00
2,600.0	7.70	225.00	2,587.9	-133.4	-133.4	-132.1	0.00	0.00	0.00
2,700.0	7.70	225.00	2,687.0	-142.9	-142.9	-141.5	0.00	0.00	0.00
2,800.0	7.70	225.00	2,786.1	-152.4	-152.4	-150.9	0.00	0.00	0.00
2,900.0	7.70	225.00	2,885.2	-161.8	-161.8	-160.3	0.00	0.00	0.00
3,000.0	7.70	225.00	2,984.3	-171.3	-171.3	-169.7	0.00	0.00	0.00
3,100.0	7.70	225.00	3,083.4	-180.8	-180.8	-179.1	0.00	0.00	0.00
3,200.0	7.70	225.00	3,182.5	-190.3	-190.3	-188.5	0.00	0.00	0.00
3,300.0	7.70	225.00	3,281.6	-199.7	-199.7	-197.8	0.00	0.00	0.00
3,400.0	7.70	225.00	3,380.7	-209.2	-209.2	-207.2	0.00	0.00	0.00
3,500.0	7.70	225.00	3,479.8	-218.7	-218.7	-216.6	0.00	0.00	0.00
3,600.0	7.70	225.00	3,578.9	-228.2	-228.2	-226.0	0.00	0.00	0.00
3,637.5	7.70	225.00	3,616.1	-231.7	-231.7	-229.5	0.00	0.00	0.00
3,700.0	6.45	225.00	3,678.0	-237.2	-237.2	-234.9	2.00	-2.00	0.00
3,800.0	4.45	225.00	3,777.6	-243.9	-243.9	-241.6	2.00	-2.00	0.00
3,900.0	2.45	225.00	3,877.4	-248.1	-248.1	-245.8	2.00	-2.00	0.00
4,000.0	0.45	225.00	3,977.4	-249.9	-249.9	-247.6	2.00	-2.00	0.00
4,022.6	0.00	0.00	4,000.0	-250.0	-250.0	-247.6	2.00	-2.00	0.00
4,100.0	0.00	0.00	4,077.4	-250.0	-250.0	-247.6	0.00	0.00	0.00
4,200.0	0.00	0.00	4,177.4	-250.0	-250.0	-247.6	0.00	0.00	0.00
4,300.0	0.00	0.00	4,277.4	-250.0	-250.0	-247.6	0.00	0.00	0.00
4,400.0	0.00	0.00	4,377.4	-250.0	-250.0	-247.6	0.00	0.00	0.00
4,500.0	0.00	0.00	4,477.4	-250.0	-250.0	-247.6	0.00	0.00	0.00
4,600.0	0.00	0.00	4,577.4	-250.0	-250.0	-247.6	0.00	0.00	0.00
4,700.0	0.00	0.00	4,677.4	-250.0	-250.0	-247.6	0.00	0.00	0.00

<b>Database:</b>	Landmark	<b>Local Co-ordinate Reference:</b>	Well SRC Kelly Farms 22-4-3NHZ
<b>Company:</b>	Synergy Resources	<b>TVD Reference:</b>	WELL @ 4766.0ft (Original Well Elev)
<b>Project:</b>	SEC.4-T5N-R66W	<b>MD Reference:</b>	WELL @ 4766.0ft (Original Well Elev)
<b>Site:</b>	SRC Kelly Farms Pad Sec.4-T5N-R66W	<b>North Reference:</b>	True
<b>Well:</b>	SRC Kelly Farms 22-4-3NHZ	<b>Survey Calculation Method:</b>	Minimum Curvature
<b>Wellbore:</b>	Wellbore #1		
<b>Design:</b>	Plan #1 (5-20-13)		

Planned Survey									
Measured Depth (ft)	Inclination (°)	Azimuth (°)	Vertical Depth (ft)	+N/-S (ft)	+E/-W (ft)	Vertical Section (ft)	Dogleg Rate (°/100ft)	Build Rate (°/100ft)	Turn Rate (°/100ft)
4,800.0	0.00	0.00	4,777.4	-250.0	-250.0	-247.6	0.00	0.00	0.00
4,900.0	0.00	0.00	4,877.4	-250.0	-250.0	-247.6	0.00	0.00	0.00
5,000.0	0.00	0.00	4,977.4	-250.0	-250.0	-247.6	0.00	0.00	0.00
5,100.0	0.00	0.00	5,077.4	-250.0	-250.0	-247.6	0.00	0.00	0.00
5,200.0	0.00	0.00	5,177.4	-250.0	-250.0	-247.6	0.00	0.00	0.00
5,300.0	0.00	0.00	5,277.4	-250.0	-250.0	-247.6	0.00	0.00	0.00
5,400.0	0.00	0.00	5,377.4	-250.0	-250.0	-247.6	0.00	0.00	0.00
5,500.0	0.00	0.00	5,477.4	-250.0	-250.0	-247.6	0.00	0.00	0.00
5,600.0	0.00	0.00	5,577.4	-250.0	-250.0	-247.6	0.00	0.00	0.00
5,700.0	0.00	0.00	5,677.4	-250.0	-250.0	-247.6	0.00	0.00	0.00
5,800.0	0.00	0.00	5,777.4	-250.0	-250.0	-247.6	0.00	0.00	0.00
5,900.0	0.00	0.00	5,877.4	-250.0	-250.0	-247.6	0.00	0.00	0.00
6,000.0	0.00	0.00	5,977.4	-250.0	-250.0	-247.6	0.00	0.00	0.00
6,100.0	0.00	0.00	6,077.4	-250.0	-250.0	-247.6	0.00	0.00	0.00
6,200.0	0.00	0.00	6,177.4	-250.0	-250.0	-247.6	0.00	0.00	0.00
6,300.0	0.00	0.00	6,277.4	-250.0	-250.0	-247.6	0.00	0.00	0.00
6,357.4	0.00	0.00	6,334.8	-250.0	-250.0	-247.6	0.00	0.00	0.00
<b>KOP #2</b>									
6,400.0	3.40	87.86	6,377.3	-250.0	-248.7	-246.4	7.99	7.99	0.00
6,500.0	11.40	87.86	6,476.4	-249.5	-235.9	-233.5	8.00	8.00	0.00
6,600.0	19.40	87.86	6,572.8	-248.5	-209.3	-207.0	8.00	8.00	0.00
6,700.0	27.40	87.86	6,664.5	-247.0	-169.7	-167.3	8.00	8.00	0.00
6,800.0	35.40	87.86	6,749.7	-245.1	-117.7	-115.3	8.00	8.00	0.00
6,900.0	43.40	87.86	6,826.9	-242.7	-54.3	-52.0	8.00	8.00	0.00
7,000.0	51.40	87.86	6,894.6	-239.9	19.2	21.5	8.00	8.00	0.00
7,100.0	59.40	87.86	6,951.3	-236.9	101.4	103.7	8.00	8.00	0.00
7,200.0	67.40	87.86	6,996.0	-233.5	190.7	192.9	8.00	8.00	0.00
7,300.0	75.40	87.86	7,027.9	-230.0	285.4	287.5	8.00	8.00	0.00
7,400.0	83.40	87.86	7,046.3	-226.3	383.5	385.6	8.00	8.00	0.00
7,482.4	90.00	87.86	7,051.0	-223.2	465.7	467.8	8.00	8.00	0.00
<b>End of Build - 7"</b>									
7,500.0	90.00	87.86	7,051.0	-222.6	483.2	485.3	0.02	0.02	0.00
7,600.0	90.00	87.86	7,051.0	-218.8	583.2	585.2	0.00	0.00	0.00
7,700.0	90.00	87.86	7,051.0	-215.1	683.1	685.1	0.00	0.00	0.00
7,800.0	90.00	87.86	7,051.0	-211.4	783.0	785.0	0.00	0.00	0.00
7,900.0	90.00	87.86	7,051.0	-207.6	883.0	884.9	0.00	0.00	0.00
8,000.0	90.00	87.86	7,051.0	-203.9	982.9	984.8	0.00	0.00	0.00
8,100.0	90.00	87.86	7,051.0	-200.2	1,082.8	1,084.7	0.00	0.00	0.00
8,200.0	90.00	87.86	7,051.0	-196.4	1,182.8	1,184.6	0.00	0.00	0.00
8,300.0	90.00	87.86	7,051.0	-192.7	1,282.7	1,284.5	0.00	0.00	0.00
8,400.0	90.00	87.86	7,051.0	-188.9	1,382.6	1,384.3	0.00	0.00	0.00
8,500.0	90.00	87.86	7,051.0	-185.2	1,482.5	1,484.2	0.00	0.00	0.00
8,600.0	90.00	87.86	7,051.0	-181.5	1,582.5	1,584.1	0.00	0.00	0.00
8,700.0	90.00	87.86	7,051.0	-177.7	1,682.4	1,684.0	0.00	0.00	0.00
8,800.0	90.00	87.86	7,051.0	-174.0	1,782.3	1,783.9	0.00	0.00	0.00
8,900.0	90.00	87.86	7,051.0	-170.3	1,882.3	1,883.8	0.00	0.00	0.00
9,000.0	90.00	87.86	7,051.0	-166.5	1,982.2	1,983.7	0.00	0.00	0.00
9,100.0	90.00	87.86	7,051.0	-162.8	2,082.1	2,083.6	0.00	0.00	0.00
9,200.0	90.00	87.86	7,051.0	-159.0	2,182.1	2,183.5	0.00	0.00	0.00
9,300.0	90.00	87.86	7,051.0	-155.3	2,282.0	2,283.4	0.00	0.00	0.00
9,400.0	90.00	87.86	7,051.0	-151.6	2,381.9	2,383.2	0.00	0.00	0.00
9,500.0	90.00	87.86	7,051.0	-147.8	2,481.8	2,483.1	0.00	0.00	0.00
9,600.0	90.00	87.86	7,051.0	-144.1	2,581.8	2,583.0	0.00	0.00	0.00
9,700.0	90.00	87.86	7,051.0	-140.4	2,681.7	2,682.9	0.00	0.00	0.00

**Database:** Landmark  
**Company:** Synergy Resources  
**Project:** SEC.4-T5N-R66W  
**Site:** SRC Kelly Farms Pad Sec.4-T5N-R66W  
**Well:** SRC Kelly Farms 22-4-3NHZ  
**Wellbore:** Wellbore #1  
**Design:** Plan #1 (5-20-13)

**Local Co-ordinate Reference:** Well SRC Kelly Farms 22-4-3NHZ  
**TVD Reference:** WELL @ 4766.0ft (Original Well Elev)  
**MD Reference:** WELL @ 4766.0ft (Original Well Elev)  
**North Reference:** True  
**Survey Calculation Method:** Minimum Curvature

## Planned Survey

Measured Depth (ft)	Inclination (°)	Azimuth (°)	Vertical Depth (ft)	+N/-S (ft)	+E/-W (ft)	Vertical Section (ft)	Dogleg Rate (°/100ft)	Build Rate (°/100ft)	Turn Rate (°/100ft)
9,800.0	90.00	87.86	7,051.0	-136.6	2,781.6	2,782.8	0.00	0.00	0.00
9,900.0	90.00	87.86	7,051.0	-132.9	2,881.6	2,882.7	0.00	0.00	0.00
10,000.0	90.00	87.86	7,051.0	-129.2	2,981.5	2,982.6	0.00	0.00	0.00
10,100.0	90.00	87.86	7,051.0	-125.4	3,081.4	3,082.5	0.00	0.00	0.00
10,200.0	90.00	87.86	7,051.0	-121.7	3,181.4	3,182.4	0.00	0.00	0.00
10,300.0	90.00	87.86	7,051.0	-117.9	3,281.3	3,282.3	0.00	0.00	0.00
10,400.0	90.00	87.86	7,051.0	-114.2	3,381.2	3,382.2	0.00	0.00	0.00
10,500.0	90.00	87.86	7,051.0	-110.5	3,481.2	3,482.0	0.00	0.00	0.00
10,600.0	90.00	87.86	7,051.0	-106.7	3,581.1	3,581.9	0.00	0.00	0.00
10,700.0	90.00	87.86	7,051.0	-103.0	3,681.0	3,681.8	0.00	0.00	0.00
10,800.0	90.00	87.86	7,051.0	-99.3	3,780.9	3,781.7	0.00	0.00	0.00
10,900.0	90.00	87.86	7,051.0	-95.5	3,880.9	3,881.6	0.00	0.00	0.00
11,000.0	90.00	87.86	7,051.0	-91.8	3,980.8	3,981.5	0.00	0.00	0.00
11,100.0	90.00	87.86	7,051.0	-88.0	4,080.7	4,081.4	0.00	0.00	0.00
11,200.0	90.00	87.86	7,051.0	-84.3	4,180.7	4,181.3	0.00	0.00	0.00
11,300.0	90.00	87.86	7,051.0	-80.6	4,280.6	4,281.2	0.00	0.00	0.00
11,400.0	90.00	87.86	7,051.0	-76.8	4,380.5	4,381.1	0.00	0.00	0.00
11,500.0	90.00	87.86	7,051.0	-73.1	4,480.5	4,480.9	0.00	0.00	0.00
11,600.0	90.00	87.86	7,051.0	-69.4	4,580.4	4,580.8	0.00	0.00	0.00
11,700.0	90.00	87.86	7,051.0	-65.6	4,680.3	4,680.7	0.00	0.00	0.00
11,800.0	90.00	87.86	7,051.0	-61.9	4,780.2	4,780.6	0.00	0.00	0.00
11,900.0	90.00	87.86	7,051.0	-58.1	4,880.2	4,880.5	0.00	0.00	0.00
12,000.0	90.00	87.86	7,051.0	-54.4	4,980.1	4,980.4	0.00	0.00	0.00
12,100.0	90.00	87.86	7,051.0	-50.7	5,080.0	5,080.3	0.00	0.00	0.00
12,154.4	90.00	87.86	7,051.0	-48.6	5,134.4	5,134.6	0.00	0.00	0.00

BHL 2180'FNL & 2118'FWL, Sec. 3

## Targets

### Target Name

- hit/miss target - Shape	Dip Angle (°)	Dip Dir. (°)	TVD (ft)	+N/-S (ft)	+E/-W (ft)	Northing (ft)	Easting (ft)	Latitude	Longitude
SHL 2130'FNL & 2330'FWL - plan hits target center - Point	0.00	0.00	1.0	0.0	0.0	1,400,847.56	3,199,112.80	40.431524	-104.784739
BHL 2180'FNL & 2118'FWL - plan hits target center - Point	0.00	0.00	7,051.0	-48.6	5,134.4	1,400,840.33	3,204,247.22	40.431389	-104.766296

## Casing Points

Measured Depth (ft)	Vertical Depth (ft)	Name	Casing Diameter (")	Hole Diameter (")
7,482.4	7,051.0	7"	7	7-1/2

<b>Database:</b>	Landmark	<b>Local Co-ordinate Reference:</b>	Well SRC Kelly Farms 22-4-3NHZ
<b>Company:</b>	Synergy Resources	<b>TVD Reference:</b>	WELL @ 4766.0ft (Original Well Elev)
<b>Project:</b>	SEC.4-T5N-R66W	<b>MD Reference:</b>	WELL @ 4766.0ft (Original Well Elev)
<b>Site:</b>	SRC Kelly Farms Pad Sec.4-T5N-R66W	<b>North Reference:</b>	True
<b>Well:</b>	SRC Kelly Farms 22-4-3NHZ	<b>Survey Calculation Method:</b>	Minimum Curvature
<b>Wellbore:</b>	Wellbore #1		
<b>Design:</b>	Plan #1 (5-20-13)		

Plan Annotations					
Measured Depth (ft)	Vertical Depth (ft)	Local Coordinates		Comment	
		+N/-S (ft)	+E/-W (ft)		
1,000.0	1,000.0	0.0	0.0	KOP	
6,357.4	6,334.8	-250.0	-250.0	KOP #2	
7,482.4	7,051.0	-223.2	465.7	End of Build	



# **Synergy Resources**

**SEC.4-T5N-R66W**

**SRC Kelly Farms Pad Sec.4-T5N-R66W**

**SRC Kelly Farms 22-4-3NHZ**

**Wellbore #1**

**Plan #1 (5-20-13)**

## **Anticollision Report**

**29 May, 2013**





<b>Company:</b>	Synergy Resources	<b>Local Co-ordinate Reference:</b>	Well SRC Kelly Farms 22-4-3NHZ
<b>Project:</b>	SEC.4-T5N-R66W	<b>TVD Reference:</b>	WELL @ 4766.0ft (Original Well Elev)
<b>Reference Site:</b>	SRC Kelly Farms Pad Sec.4-T5N-R66W	<b>MD Reference:</b>	WELL @ 4766.0ft (Original Well Elev)
<b>Site Error:</b>	0.0ft	<b>North Reference:</b>	True
<b>Reference Well:</b>	SRC Kelly Farms 22-4-3NHZ	<b>Survey Calculation Method:</b>	Minimum Curvature
<b>Well Error:</b>	0.0ft	<b>Output errors are at</b>	2.00 sigma
<b>Reference Wellbore</b>	Wellbore #1	<b>Database:</b>	Landmark
<b>Reference Design:</b>	Plan #1 (5-20-13)	<b>Offset TVD Reference:</b>	Offset Datum

Offset Design Northridge Pad Sec.4-T5N-R66W - Northridge 12-4D (Exist.) - Wellbore #1 - Wellbore #1													Offset Site Error:	0.0 ft
Survey Program: 182-MWD													Offset Well Error:	0.0 ft
Reference		Offset		Semi Major Axis			Distance							Warning
Measured Depth (ft)	Vertical Depth (ft)	Measured Depth (ft)	Vertical Depth (ft)	Reference (ft)	Offset (ft)	Highside Toolface (°)	Offset Wellbore Centre +N/-S (ft)	+E/-W (ft)	Between Centres (ft)	Between Ellipses (ft)	Minimum Separation (ft)	Separation Factor		
1,100.0	1,100.0	1,144.6	1,134.3	2.3	3.2	-134.42	-4.6	230.8	236.6	231.8	4.84	48.891		
1,200.0	1,199.8	1,249.9	1,237.3	2.5	3.6	-136.70	-0.7	208.7	219.3	214.0	5.31	41.308		
1,300.0	1,299.5	1,354.4	1,338.5	2.7	4.1	-139.83	2.4	183.2	201.4	195.6	5.83	34.570		
1,400.0	1,398.7	1,450.1	1,431.2	2.9	4.6	-143.26	3.5	159.3	185.9	179.6	6.33	29.385		
1,500.0	1,497.8	1,546.5	1,525.1	3.2	5.0	-146.49	2.4	137.3	174.0	167.1	6.84	25.424		
1,600.0	1,596.9	1,651.2	1,626.4	3.5	5.5	-151.23	2.7	111.0	160.7	153.2	7.47	21.515		
1,700.0	1,696.0	1,752.3	1,723.5	3.7	6.1	-156.89	2.8	82.9	146.0	137.8	8.18	17.840		
1,800.0	1,795.1	1,852.1	1,818.7	4.0	6.7	-164.28	3.2	52.9	131.1	122.0	9.04	14.503		
1,900.0	1,894.2	1,951.6	1,913.1	4.3	7.3	-173.77	3.6	21.4	117.3	107.3	10.07	11.650		
2,000.0	1,993.3	2,050.5	2,006.8	4.6	7.9	-175.85	0.5	-10.2	104.8	93.6	11.22	9.340		
2,100.0	2,092.4	2,147.8	2,098.4	4.9	8.5	-162.89	-2.6	-42.4	95.9	83.3	12.55	7.639		
2,169.4	2,161.2	2,214.0	2,160.3	5.2	9.0	-151.66	-3.4	-66.3	93.7	80.1	13.54	6.917 CC, ES		
2,200.0	2,191.5	2,243.1	2,187.3	5.3	9.2	-146.59	-3.6	-76.8	94.1	80.2	13.94	6.748 SF		
2,300.0	2,290.6	2,336.0	2,274.1	5.6	9.8	-131.64	-3.2	-110.0	102.0	87.1	14.98	6.811		
2,400.0	2,389.7	2,430.4	2,362.9	5.9	10.4	-120.48	0.4	-141.9	119.0	103.3	15.68	7.589		
2,500.0	2,488.8	2,526.7	2,453.7	6.2	11.0	-112.41	4.4	-173.7	139.6	123.3	16.27	8.582		
2,600.0	2,587.9	2,621.5	2,542.5	6.5	11.7	-105.94	7.9	-206.5	162.6	145.8	16.80	9.680		
2,700.0	2,687.0	2,714.5	2,629.2	6.9	12.4	-100.76	11.5	-240.2	188.2	170.8	17.33	10.859		
2,800.0	2,786.1	2,804.3	2,711.1	7.2	13.2	-95.74	13.7	-276.9	216.9	199.1	17.82	12.172		
2,900.0	2,885.2	2,900.0	2,797.3	7.5	14.0	-91.11	15.6	-318.2	248.4	230.1	18.30	13.575		
3,000.0	2,984.3	2,991.3	2,880.5	7.9	14.7	-87.97	17.6	-356.0	279.7	260.9	18.80	14.881		
3,100.0	3,083.4	3,077.8	2,958.9	8.2	15.5	-85.83	21.8	-392.3	313.7	294.4	19.35	16.215		
3,200.0	3,182.5	3,179.5	3,050.5	8.5	16.4	-83.62	26.4	-436.2	349.0	329.1	19.94	17.507		
3,300.0	3,281.6	3,279.6	3,142.3	8.9	17.2	-82.08	29.8	-475.9	381.0	360.4	20.54	18.547		
3,400.0	3,380.7	3,389.5	3,243.8	9.2	18.0	-80.77	33.0	-517.9	411.8	390.6	21.20	19.427		
3,500.0	3,479.8	3,517.7	3,364.3	9.5	18.8	-79.23	30.3	-561.4	436.1	414.2	21.85	19.956		
3,600.0	3,578.9	3,620.3	3,463.1	9.9	19.4	-79.25	33.2	-588.8	457.3	434.8	22.55	20.277		
3,700.0	3,678.0	3,721.9	3,561.6	10.2	19.9	-79.69	36.7	-613.3	476.9	453.6	23.25	20.513		
3,800.0	3,777.6	3,806.7	3,643.6	10.4	20.3	-79.90	40.0	-634.9	498.3	474.6	23.78	20.953		
3,900.0	3,877.4	3,887.3	3,720.6	10.6	20.8	-79.66	42.9	-658.5	523.6	499.3	24.23	21.608		
4,000.0	3,977.4	3,972.7	3,801.4	10.8	21.4	-78.95	45.4	-686.3	551.8	527.2	24.61	22.423		
4,100.0	4,077.4	4,056.0	3,879.3	10.9	22.0	-57.46	47.0	-715.4	582.6	553.9	28.72	20.288		
4,200.0	4,177.4	4,138.1	3,955.5	11.1	22.6	-58.97	48.3	-745.9	615.6	585.9	29.70	20.725		
4,300.0	4,277.4	4,248.1	4,057.7	11.2	23.4	-60.78	50.1	-786.6	649.0	618.0	30.91	20.998		
4,400.0	4,377.4	4,359.2	4,162.3	11.4	24.2	-62.36	50.7	-824.2	679.2	647.2	32.01	21.221		
4,500.0	4,477.4	4,437.3	4,235.5	11.6	24.7	-63.44	50.6	-851.3	710.4	677.6	32.85	21.624		
4,600.0	4,577.4	4,529.0	4,321.0	11.7	25.4	-64.70	49.9	-884.4	743.0	709.2	33.86	21.948		
4,700.0	4,677.4	4,612.5	4,398.5	11.9	26.0	-65.80	49.0	-915.3	776.7	741.9	34.79	22.321		
4,800.0	4,777.4	4,690.5	4,470.6	12.1	26.6	-66.76	48.5	-945.2	812.0	776.3	35.71	22.741		
4,900.0	4,877.4	4,771.7	4,545.2	12.3	27.3	-67.65	49.0	-977.3	849.1	812.4	36.65	23.166		
5,000.0	4,977.4	4,869.4	4,634.8	12.4	28.1	-68.58	50.5	-1,016.2	886.9	849.2	37.72	23.510		
5,100.0	5,077.4	4,966.2	4,724.0	12.6	28.8	-69.39	52.1	-1,053.5	923.8	885.1	38.76	23.832		
5,200.0	5,177.4	5,057.1	4,807.8	12.8	29.6	-70.12	53.3	-1,088.7	960.9	921.1	39.76	24.168		
5,300.0	5,277.4	5,140.6	4,884.6	13.0	30.3	-70.81	53.4	-1,121.7	998.5	957.7	40.71	24.527		

<b>Company:</b>	Synergy Resources	<b>Local Co-ordinate Reference:</b>	Well SRC Kelly Farms 22-4-3NHZ
<b>Project:</b>	SEC.4-T5N-R66W	<b>TVD Reference:</b>	WELL @ 4766.0ft (Original Well Elev)
<b>Reference Site:</b>	SRC Kelly Farms Pad Sec.4-T5N-R66W	<b>MD Reference:</b>	WELL @ 4766.0ft (Original Well Elev)
<b>Site Error:</b>	0.0ft	<b>North Reference:</b>	True
<b>Reference Well:</b>	SRC Kelly Farms 22-4-3NHZ	<b>Survey Calculation Method:</b>	Minimum Curvature
<b>Well Error:</b>	0.0ft	<b>Output errors are at</b>	2.00 sigma
<b>Reference Wellbore</b>	Wellbore #1	<b>Database:</b>	Landmark
<b>Reference Design:</b>	Plan #1 (5-20-13)	<b>Offset TVD Reference:</b>	Offset Datum

Offset Design Northridge Pad Sec.4-T5N-R66W - Northridge 22-4D (Exist.) - Wellbore #1 - Wellbore #1													Offset Site Error:	0.0 ft
Survey Program: 182-MWD													Offset Well Error:	0.0 ft
Reference	Offset	Semi Major Axis		Distance										Warning
Measured Depth (ft)	Vertical Depth (ft)	Measured Depth (ft)	Vertical Depth (ft)	Reference (ft)	Offset (ft)	Highside Toolface (°)	Offset Wellbore Centre +N/-S (ft)	+E/-W (ft)	Between Centres (ft)	Between Ellipses (ft)	Minimum Separation (ft)	Separation Factor		
0.0	0.0	0.0	0.0	0.0	0.0	99.37	-55.7	337.7	342.5					
100.0	100.0	85.3	85.3	0.1	0.1	99.48	-56.4	337.9	342.6	342.4	0.21	1,605.860		
200.0	200.0	182.2	182.1	0.3	0.2	99.87	-58.9	338.7	343.8	343.3	0.55	622.064		
300.0	300.0	283.0	282.9	0.6	0.4	100.39	-62.3	339.7	345.4	344.4	0.99	349.256		
400.0	400.0	383.7	383.5	0.8	0.6	100.83	-65.1	340.6	346.8	345.4	1.42	243.701		
500.0	500.0	484.4	484.2	1.0	0.9	101.19	-67.5	341.4	348.0	346.2	1.87	186.363		
600.0	600.0	585.1	584.9	1.2	1.1	101.50	-69.5	341.9	348.9	346.6	2.31	150.895		
700.0	700.0	685.4	685.2	1.5	1.3	101.76	-71.3	342.5	349.9	347.1	2.75	127.183		
800.0	800.0	787.5	787.3	1.7	1.5	101.98	-72.7	342.7	350.4	347.2	3.19	109.723		
900.0	900.0	888.9	888.7	1.9	1.7	101.89	-72.2	342.8	350.3	346.7	3.63	96.408		
1,000.0	1,000.0	991.7	991.4	2.1	1.9	101.54	-70.0	342.8	349.9	345.8	4.07	85.925		
1,073.2	1,073.2	1,066.5	1,066.2	2.3	2.1	-123.77	-68.7	342.0	349.4	345.1	4.37	80.042		
1,100.0	1,100.0	1,093.5	1,093.2	2.3	2.1	-123.94	-68.3	341.7	349.5	345.0	4.47	78.137		
1,200.0	1,199.8	1,194.0	1,193.8	2.5	2.3	-124.82	-66.9	340.4	350.9	346.0	4.86	72.160		
1,300.0	1,299.5	1,294.0	1,293.7	2.7	2.6	-126.12	-65.3	338.9	354.2	348.9	5.27	67.220		
1,400.0	1,398.7	1,394.1	1,393.7	2.9	2.8	-127.84	-63.7	337.2	359.7	354.0	5.69	63.186		
1,500.0	1,497.8	1,492.2	1,491.8	3.2	3.0	-129.66	-62.3	335.6	366.3	360.2	6.12	59.860		
1,600.0	1,596.9	1,591.3	1,590.9	3.5	3.2	-131.38	-61.1	334.1	373.5	366.9	6.56	56.963		
1,700.0	1,696.0	1,693.5	1,693.1	3.7	3.4	-133.07	-60.1	332.1	380.5	373.5	7.01	54.257		
1,800.0	1,795.1	1,794.0	1,793.6	4.0	3.6	-134.56	-59.8	329.4	387.2	379.7	7.47	51.840		
1,900.0	1,894.2	1,893.5	1,893.0	4.3	3.8	-135.97	-59.6	326.9	394.2	386.2	7.92	49.740		
2,000.0	1,993.3	1,997.7	1,997.2	4.6	4.0	-137.39	-59.5	323.4	400.6	392.2	8.40	47.711		
2,100.0	2,092.4	2,100.1	2,099.4	4.9	4.3	-138.76	-59.3	318.8	406.1	397.3	8.87	45.800		
2,200.0	2,191.5	2,204.9	2,204.2	5.3	4.5	-140.07	-59.5	313.5	411.3	402.0	9.34	44.032		
2,300.0	2,290.6	2,312.6	2,311.5	5.6	4.7	-141.40	-59.8	305.9	414.6	404.8	9.82	42.203		
2,400.0	2,389.7	2,430.0	2,428.4	5.9	5.0	-142.88	-60.2	294.3	415.4	405.1	10.33	40.209		
2,500.0	2,488.8	2,539.7	2,537.1	6.2	5.3	-144.14	-62.0	279.8	412.9	402.1	10.82	38.152		
2,600.0	2,587.9	2,657.0	2,652.7	6.5	5.6	-145.73	-63.1	260.0	407.0	395.6	11.33	35.917		
2,700.0	2,687.0	2,766.0	2,759.3	6.9	6.0	-147.36	-64.1	237.7	397.6	385.8	11.82	33.641		
2,800.0	2,786.1	2,877.3	2,867.8	7.2	6.4	-148.99	-66.5	212.6	386.5	374.1	12.32	31.371		
2,900.0	2,885.2	2,989.4	2,976.0	7.5	6.8	-150.67	-70.6	183.6	371.8	359.0	12.83	28.985		
3,000.0	2,984.3	3,084.0	3,067.1	7.9	7.2	-152.20	-74.1	158.4	356.6	343.3	13.29	26.839		
3,100.0	3,083.4	3,176.5	3,156.5	8.2	7.5	-153.78	-77.5	135.0	343.0	329.3	13.73	24.980		
3,200.0	3,182.5	3,281.5	3,257.7	8.5	8.0	-156.08	-79.6	106.9	328.9	314.7	14.22	23.129		
3,300.0	3,281.6	3,369.3	3,342.4	8.9	8.4	-158.30	-80.4	84.0	316.3	301.7	14.68	21.550		
3,400.0	3,380.7	3,468.5	3,438.6	9.2	8.8	-160.63	-82.5	60.2	305.8	290.7	15.17	20.165		
3,500.0	3,479.8	3,572.5	3,539.4	9.5	9.2	-163.11	-85.8	34.5	294.8	279.1	15.70	18.783		
3,600.0	3,578.9	3,675.4	3,638.5	9.9	9.7	-166.03	-88.8	7.0	282.6	266.3	16.26	17.376		
3,700.0	3,678.0	3,776.2	3,735.3	10.2	10.2	-169.14	-92.1	-21.1	269.3	252.5	16.86	15.972		
3,800.0	3,777.6	3,877.0	3,831.7	10.4	10.8	-172.45	-96.2	-50.1	252.5	235.0	17.48	14.445		
3,900.0	3,877.4	3,974.6	3,924.7	10.6	11.3	-176.34	-100.0	-79.5	232.2	214.1	18.14	12.802		
4,000.0	3,977.4	4,067.5	4,013.4	10.8	11.8	179.26	-103.3	-107.1	210.3	191.4	18.84	11.163		
4,100.0	4,077.4	4,159.4	4,101.9	10.9	12.2	39.69	-107.1	-131.4	189.3	167.4	21.86	8.658		
4,200.0	4,177.4	4,253.2	4,192.9	11.1	12.6	34.63	-110.6	-153.7	171.7	149.6	22.04	7.788		
4,300.0	4,277.4	4,348.1	4,285.6	11.2	13.0	29.21	-114.0	-174.0	157.1	135.0	22.12	7.103		
4,400.0	4,377.4	4,444.1	4,379.8	11.4	13.4	23.55	-117.0	-192.0	145.8	123.7	22.12	6.592		
4,500.0	4,477.4	4,540.8	4,475.1	11.6	13.7	17.62	-119.5	-208.5	137.3	115.2	22.06	6.223		
4,600.0	4,577.4	4,637.9	4,571.1	11.7	14.0	12.22	-121.6	-222.2	131.6	109.5	22.03	5.972		
4,700.0	4,677.4	4,735.3	4,668.0	11.9	14.3	7.97	-122.9	-232.2	128.3	106.2	22.10	5.808		
4,781.5	4,758.9	4,814.4	4,746.9	12.0	14.5	5.10	-123.0	-238.7	127.5	105.3	22.20	5.741		
4,800.0	4,777.4	4,832.3	4,764.8	12.1	14.5	4.56	-122.9	-239.9	127.5	105.3	22.24	5.734		
4,900.0	4,877.4	4,931.7	4,863.9	12.3	14.7	2.32	-121.5	-244.8	128.6	106.1	22.47	5.723		

CC - Min centre to center distance or convergent point, SF - min separation factor, ES - min ellipse separation

<b>Company:</b>	Synergy Resources	<b>Local Co-ordinate Reference:</b>	Well SRC Kelly Farms 22-4-3NHZ
<b>Project:</b>	SEC.4-T5N-R66W	<b>TVD Reference:</b>	WELL @ 4766.0ft (Original Well Elev)
<b>Reference Site:</b>	SRC Kelly Farms Pad Sec.4-T5N-R66W	<b>MD Reference:</b>	WELL @ 4766.0ft (Original Well Elev)
<b>Site Error:</b>	0.0ft	<b>North Reference:</b>	True
<b>Reference Well:</b>	SRC Kelly Farms 22-4-3NHZ	<b>Survey Calculation Method:</b>	Minimum Curvature
<b>Well Error:</b>	0.0ft	<b>Output errors are at</b>	2.00 sigma
<b>Reference Wellbore</b>	Wellbore #1	<b>Database:</b>	Landmark
<b>Reference Design:</b>	Plan #1 (5-20-13)	<b>Offset TVD Reference:</b>	Offset Datum

<b>Offset Design</b> Northridge Pad Sec.4-T5N-R66W - Northridge 22-4D (Exist.) - Wellbore #1 - Wellbore #1												<b>Offset Site Error:</b>	0.0 ft
Survey Program: 182-MWD												<b>Offset Well Error:</b>	0.0 ft
Reference		Offset		Semi Major Axis			Distance						
Measured Depth (ft)	Vertical Depth (ft)	Measured Depth (ft)	Vertical Depth (ft)	Reference (ft)	Offset (ft)	Highside Toolface (°)	Offset Wellbore Centre +N/-S (ft)	+E/-W (ft)	Between Centres (ft)	Between Ellipses (ft)	Minimum Separation (ft)	Separation Factor	Warning
5,000.0	4,977.4	5,032.4	4,964.6	12.4	14.9	1.02	-120.6	-247.7	129.5	106.7	22.77	5.686	
5,100.0	5,077.4	5,132.9	5,065.2	12.6	15.1	0.15	-120.2	-249.7	129.8	106.7	23.10	5.620	
5,200.0	5,177.4	5,233.0	5,165.2	12.8	15.2	-0.56	-120.0	-251.3	130.0	106.5	23.44	5.544	
5,300.0	5,277.4	5,333.3	5,265.5	13.0	15.4	-1.14	-120.0	-252.6	130.0	106.2	23.80	5.462	
5,400.0	5,377.4	5,433.9	5,366.1	13.1	15.5	-1.63	-120.4	-253.7	129.6	105.5	24.16	5.366	
5,500.0	5,477.4	5,534.5	5,466.7	13.3	15.7	-1.90	-121.3	-254.3	128.8	104.3	24.54	5.250	
5,600.0	5,577.4	5,634.9	5,567.1	13.5	15.9	-2.05	-122.5	-254.6	127.6	102.6	24.92	5.119	
5,700.0	5,677.4	5,734.7	5,666.9	13.7	16.0	-2.13	-123.8	-254.7	126.3	101.0	25.31	4.990	
5,800.0	5,777.4	5,834.7	5,766.9	13.9	16.2	-2.17	-125.0	-254.7	125.1	99.4	25.70	4.867	
5,900.0	5,877.4	5,934.6	5,866.7	14.1	16.3	-2.22	-126.2	-254.8	123.9	97.8	26.09	4.749	
6,000.0	5,977.4	6,034.6	5,966.8	14.2	16.5	-2.34	-127.3	-255.0	122.8	96.3	26.48	4.639	
6,100.0	6,077.4	6,134.9	6,067.0	14.4	16.6	-2.47	-128.6	-255.2	121.6	94.7	26.87	4.524	
6,200.0	6,177.4	6,234.9	6,167.0	14.6	16.8	-2.56	-130.0	-255.4	120.2	92.9	27.26	4.408	
6,300.0	6,277.4	6,335.3	6,267.5	14.8	17.0	-2.66	-131.5	-255.5	118.6	90.9	27.66	4.288	
6,400.0	6,377.3	6,435.8	6,367.9	15.0	17.1	-91.31	-133.5	-255.6	116.6	85.1	31.55	3.697	
6,492.6	6,469.1	6,527.7	6,459.8	15.1	17.3	-97.07	-135.7	-255.5	115.3	83.4	31.95	3.608 CC	
6,500.0	6,476.4	6,535.0	6,467.0	15.1	17.3	-97.78	-135.9	-255.5	115.3	83.3	31.99	3.605 ES, SF	
6,600.0	6,572.8	6,630.5	6,562.6	15.2	17.5	-110.12	-138.1	-256.4	120.0	87.9	32.10	3.740	
6,700.0	6,664.5	6,721.4	6,653.4	15.2	17.6	-124.30	-140.1	-257.8	138.5	107.3	31.25	4.432	
6,800.0	6,749.7	6,805.7	6,737.6	15.3	17.8	-136.06	-142.1	-259.3	175.1	145.6	29.53	5.929	
6,900.0	6,826.9	6,881.6	6,813.6	15.3	17.9	-143.97	-143.9	-260.7	228.8	201.3	27.54	8.309	
7,000.0	6,894.6	6,947.4	6,879.3	15.5	18.1	-148.44	-145.6	-261.9	296.6	270.9	25.73	11.528	
7,100.0	6,951.3	7,001.9	6,933.8	16.1	18.2	-150.00	-147.1	-263.1	375.5	351.0	24.49	15.333	
7,200.0	6,996.0	7,044.4	6,976.3	17.2	18.2	-148.42	-148.3	-264.0	462.7	438.3	24.41	18.957	
7,300.0	7,027.9	7,073.9	7,005.7	18.6	18.3	-141.60	-149.1	-264.7	556.1	529.3	26.79	20.758	
7,400.0	7,046.3	7,089.8	7,021.6	20.3	18.3	-121.37	-149.6	-265.1	653.2	618.9	34.28	19.053	
7,500.0	7,051.0	7,092.1	7,023.9	22.1	18.3	-81.48	-149.7	-265.1	752.1	712.1	39.94	18.828	
7,600.0	7,051.0	7,089.7	7,021.5	24.2	18.3	-80.16	-149.6	-265.1	851.2	809.4	41.82	20.356	
7,700.0	7,051.0	7,087.3	7,019.1	26.4	18.3	-78.86	-149.5	-265.0	950.6	906.8	43.80	21.705	

Northridge Pad Sec.4-T5N-R66W - Northridge 4KD (Exist.) - Wellbore #1 - Wellbore #1													Offset Site Error:	0.0 ft
Survey Program: 124-MWD													Offset Well Error:	0.0 ft
Reference		Offset		Semi Major Axis			Distance							
Measured Depth (ft)	Vertical Depth (ft)	Measured Depth (ft)	Vertical Depth (ft)	Reference (ft)	Offset (ft)	Highside Toolface (°)	Offset Wellbore Centre +N/-S (ft)	+E/-W (ft)	Between Centres (ft)	Between Ellipses (ft)	Minimum Separation (ft)	Separation Factor	Warning	
0.0	0.0	0.0	0.0	0.0	0.0	101.30	-66.3	331.8	338.6					
100.0	100.0	91.0	91.0	0.1	0.1	101.24	-65.9	331.5	338.0	337.8	0.22	1,564.654		
200.0	200.0	193.8	193.8	0.3	0.3	101.11	-64.9	330.3	336.7	336.0	0.63	533.266		
300.0	300.0	299.8	299.7	0.6	0.5	101.07	-64.1	327.7	334.2	333.1	1.09	305.188		
400.0	400.0	404.9	404.7	0.8	0.8	101.22	-64.1	323.2	330.0	328.4	1.56	210.942		
500.0	500.0	525.8	525.1	1.0	1.2	101.92	-65.9	312.4	321.4	319.3	2.11	152.614		
600.0	600.0	634.6	632.6	1.2	1.7	103.22	-69.6	296.6	307.9	305.2	2.63	117.098		
700.0	700.0	734.1	730.6	1.5	2.2	105.12	-75.7	280.1	293.3	290.2	3.10	94.532		
800.0	800.0	831.9	826.7	1.7	2.7	107.62	-83.7	263.7	279.3	275.8	3.54	78.908		
900.0	900.0	936.4	928.4	1.9	3.4	111.57	-96.2	243.3	264.7	260.7	4.00	66.227		
1,000.0	1,000.0	1,038.2	1,026.8	2.1	4.2	116.28	-108.9	220.5	249.0	244.5	4.50	55.367		
1,100.0	1,100.0	1,134.4	1,119.3	2.3	4.9	-103.87	-122.4	197.4	234.8	228.1	6.66	35.263		
1,200.0	1,199.8	1,228.9	1,209.5	2.5	5.8	-98.79	-137.9	174.3	224.2	216.4	7.78	28.813		
1,300.0	1,299.5	1,328.9	1,304.5	2.7	6.6	-93.24	-156.4	149.1	216.9	207.9	8.99	24.143		
1,400.0	1,398.7	1,427.2	1,398.1	2.9	7.3	-88.66	-172.2	123.7	209.7	199.6	10.05	20.873		
1,500.0	1,497.8	1,523.9	1,490.5	3.2	8.1	-84.25	-188.6	100.1	205.3	194.1	11.14	18.435		
1,600.0	1,596.9	1,621.4	1,583.4	3.5	8.8	-79.51	-205.6	76.0	202.5	190.2	12.26	16.519		
1,700.0	1,696.0	1,719.8	1,677.4	3.7	9.6	-74.80	-222.8	52.4	201.6	188.3	13.33	15.127		
1,719.6	1,715.5	1,739.3	1,695.9	3.8	9.8	-73.84	-226.2	47.6	201.6	188.1	13.53	14.897	CC	
1,800.0	1,795.1	1,819.8	1,772.6	4.0	10.5	-69.76	-240.3	27.5	201.8	187.4	14.43	13.991		
1,900.0	1,894.2	1,922.9	1,870.5	4.3	11.4	-64.25	-257.4	0.2	202.2	186.8	15.46	13.083		
1,908.4	1,902.5	1,931.6	1,878.8	4.4	11.5	-63.77	-258.8	-2.3	202.2	186.7	15.54	13.015	ES	
2,000.0	1,993.3	2,019.9	1,962.9	4.6	12.1	-59.21	-272.4	-25.6	203.2	186.9	16.24	12.511		
2,100.0	2,092.4	2,116.5	2,055.0	4.9	12.9	-54.52	-287.8	-50.2	206.5	189.6	16.96	12.175		
2,200.0	2,191.5	2,214.0	2,148.0	5.3	13.7	-50.00	-303.7	-75.0	211.6	194.0	17.58	12.032	SF	
2,300.0	2,290.6	2,309.7	2,239.4	5.6	14.4	-46.11	-320.0	-98.0	218.7	200.6	18.09	12.090		
2,400.0	2,389.7	2,415.9	2,340.9	5.9	15.3	-41.96	-337.4	-124.0	226.2	207.6	18.55	12.192		
2,500.0	2,488.8	2,517.1	2,437.9	6.2	16.0	-38.04	-351.2	-149.4	232.0	213.1	18.89	12.280		
2,600.0	2,587.9	2,609.9	2,526.8	6.5	16.7	-35.02	-365.4	-171.4	240.2	221.0	19.23	12.489		
2,700.0	2,687.0	2,709.5	2,622.1	6.9	17.5	-31.87	-381.6	-195.7	250.2	230.6	19.56	12.791		
2,800.0	2,786.1	2,809.4	2,717.2	7.2	18.4	-28.33	-395.9	-222.5	259.7	239.9	19.79	13.120		
2,900.0	2,885.2	2,906.5	2,809.3	7.5	19.3	-24.89	-410.3	-249.9	271.3	251.3	19.96	13.589		
3,000.0	2,984.3	3,004.9	2,902.9	7.9	20.1	-21.68	-423.6	-277.3	282.3	262.2	20.10	14.045		
3,100.0	3,083.4	3,096.0	2,988.7	8.2	21.0	-18.71	-437.5	-304.5	296.7	276.5	20.22	14.675		
3,200.0	3,182.5	3,199.9	3,086.4	8.5	21.9	-15.57	-453.2	-335.9	312.1	291.8	20.31	15.369		
3,300.0	3,281.6	3,299.8	3,181.2	8.9	22.8	-12.83	-466.1	-364.9	325.6	305.2	20.40	15.964		
3,400.0	3,380.7	3,390.3	3,266.7	9.2	23.6	-10.63	-479.2	-391.5	341.3	320.8	20.55	16.608		
3,500.0	3,479.8	3,491.7	3,362.2	9.5	24.6	-8.52	-495.4	-421.3	358.8	338.1	20.73	17.307		
3,600.0	3,578.9	3,600.3	3,465.3	9.9	25.5	-6.32	-509.8	-452.2	373.9	353.0	20.91	17.888		
3,700.0	3,678.0	3,713.0	3,572.9	10.2	26.4	-3.80	-520.1	-484.2	387.0	366.0	21.00	18.427		
3,800.0	3,777.6	3,787.2	3,643.7	10.4	27.0	-2.32	-527.8	-505.2	404.7	383.5	21.14	19.145		
3,900.0	3,877.4	3,864.3	3,715.8	10.6	27.8	-0.80	-538.4	-530.3	431.5	410.3	21.28	20.282		
4,000.0	3,977.4	3,949.5	3,794.2	10.8	28.8	1.01	-550.4	-561.3	465.3	443.9	21.37	21.771		
4,100.0	4,077.4	4,033.7	3,871.4	10.9	29.8	-132.35	-562.3	-592.7	502.6	462.5	40.13	12.525		
4,200.0	4,177.4	4,115.7	3,946.0	11.1	30.7	-131.11	-576.2	-623.8	542.5	501.2	41.33	13.127		
4,300.0	4,277.4	4,218.8	4,039.9	11.2	31.9	-129.78	-593.6	-662.7	582.4	539.7	42.71	13.637		
4,400.0	4,377.4	4,333.6	4,146.0	11.4	33.0	-128.54	-610.9	-703.0	619.3	575.2	44.08	14.051		
4,500.0	4,477.4	4,420.1	4,226.6	11.6	33.9	-127.72	-622.9	-732.2	654.7	609.5	45.15	14.501		
4,600.0	4,577.4	4,504.4	4,304.4	11.7	34.8	-127.10	-636.7	-761.3	692.2	646.0	46.22	14.975		
4,700.0	4,677.4	4,603.8	4,396.4	11.9	35.8	-126.53	-653.6	-794.9	729.5	682.0	47.44	15.377		
4,800.0	4,777.4	4,704.8	4,490.4	12.1	36.8	-126.20	-672.2	-826.9	765.9	717.3	48.62	15.754		
4,900.0	4,877.4	4,843.2	4,620.5	12.3	38.0	-125.76	-695.1	-867.9	799.9	749.9	50.07	15.976		

COMPASS 2003.21 Build 46

<b>Company:</b>	Synergy Resources	<b>Local Co-ordinate Reference:</b>	Well SRC Kelly Farms 22-4-3NHZ
<b>Project:</b>	SEC.4-T5N-R66W	<b>TVD Reference:</b>	WELL @ 4766.0ft (Original Well Elev)
<b>Reference Site:</b>	SRC Kelly Farms Pad Sec.4-T5N-R66W	<b>MD Reference:</b>	WELL @ 4766.0ft (Original Well Elev)
<b>Site Error:</b>	0.0ft	<b>North Reference:</b>	True
<b>Reference Well:</b>	SRC Kelly Farms 22-4-3NHZ	<b>Survey Calculation Method:</b>	Minimum Curvature
<b>Well Error:</b>	0.0ft	<b>Output errors are at</b>	2.00 sigma
<b>Reference Wellbore</b>	Wellbore #1	<b>Database:</b>	Landmark
<b>Reference Design:</b>	Plan #1 (5-20-13)	<b>Offset TVD Reference:</b>	Offset Datum

<b>Offset Design</b> Northridge Pad Sec.4-T5N-R66W - Northridge 4KD (Exist.) - Wellbore #1 - Wellbore #1												<b>Offset Site Error:</b>	0.0 ft
Survey Program: 124-MWD												<b>Offset Well Error:</b>	0.0 ft
Reference		Offset		Semi Major Axis			Distance						
Measured Depth (ft)	Vertical Depth (ft)	Measured Depth (ft)	Vertical Depth (ft)	Reference (ft)	Offset (ft)	Highside Toolface (°)	Offset Wellbore Centre +N/-S (ft)	+E/-W (ft)	Between Centres (ft)	Between Ellipses (ft)	Minimum Separation (ft)	Separation Factor	Warning
5,000.0	4,977.4	4,999.1	4,770.4	12.4	39.2	-125.23	-713.8	-906.6	827.2	775.8	51.41	16.090	
5,100.0	5,077.4	5,110.6	4,878.9	12.6	39.9	-124.85	-723.6	-930.1	849.5	797.2	52.30	16.243	
5,200.0	5,177.4	5,239.3	5,004.7	12.8	40.6	-124.43	-733.4	-955.3	870.0	816.8	53.22	16.349	
5,300.0	5,277.4	5,391.2	5,154.7	13.0	41.3	-124.06	-741.9	-977.7	885.3	831.3	54.07	16.374	
5,400.0	5,377.4	5,525.0	5,287.7	13.1	41.7	-123.84	-746.9	-991.2	895.7	841.1	54.67	16.385	
5,500.0	5,477.4	5,645.7	5,408.0	13.3	42.0	-123.71	-750.3	-999.8	903.2	848.0	55.14	16.381	
5,600.0	5,577.4	5,770.6	5,532.8	13.5	42.2	-123.65	-753.0	-1,005.5	908.2	852.7	55.54	16.352	
5,700.0	5,677.4	5,888.3	5,650.5	13.7	42.3	-123.61	-754.0	-1,008.3	910.7	854.8	55.87	16.300	
5,800.0	5,777.4	5,991.5	5,753.6	13.9	42.4	-123.58	-754.6	-1,009.9	912.2	856.1	56.15	16.246	
5,900.0	5,877.4	6,097.3	5,859.4	14.1	42.5	-123.57	-754.9	-1,010.7	913.1	856.7	56.43	16.182	
6,000.0	5,977.4	6,198.3	5,960.4	14.2	42.6	-123.57	-755.2	-1,011.3	913.7	857.0	56.69	16.117	
6,100.0	6,077.4	6,300.4	6,062.5	14.4	42.7	-123.57	-755.5	-1,011.6	914.1	857.2	56.95	16.050	
6,200.0	6,177.4	6,402.5	6,164.6	14.6	42.7	-123.58	-755.7	-1,011.7	914.3	857.1	57.21	15.980	
6,300.0	6,277.4	6,504.0	6,266.1	14.8	42.8	-123.59	-755.8	-1,011.7	914.3	856.8	57.47	15.909	
6,340.1	6,317.4	6,544.6	6,306.7	14.9	42.8	-148.56	-755.8	-1,011.6	914.7	884.1	30.54	29.946	
6,400.0	6,377.3	6,605.1	6,367.2	15.0	42.9	148.54	-755.9	-1,011.4	915.2	884.6	30.61	29.901	
6,500.0	6,476.4	6,704.4	6,466.5	15.1	42.9	148.47	-756.2	-1,010.9	926.0	895.8	30.20	30.663	
6,600.0	6,572.8	6,797.9	6,560.0	15.2	43.0	148.27	-756.7	-1,010.5	948.8	919.2	29.60	32.050	
6,700.0	6,664.5	6,888.7	6,650.9	15.2	43.0	147.87	-757.2	-1,010.3	983.4	954.4	28.97	33.945	



<b>Company:</b>	Synergy Resources	<b>Local Co-ordinate Reference:</b>	Well SRC Kelly Farms 22-4-3NHZ
<b>Project:</b>	SEC.4-T5N-R66W	<b>TVD Reference:</b>	WELL @ 4766.0ft (Original Well Elev)
<b>Reference Site:</b>	SRC Kelly Farms Pad Sec.4-T5N-R66W	<b>MD Reference:</b>	WELL @ 4766.0ft (Original Well Elev)
<b>Site Error:</b>	0.0ft	<b>North Reference:</b>	True
<b>Reference Well:</b>	SRC Kelly Farms 22-4-3NHZ	<b>Survey Calculation Method:</b>	Minimum Curvature
<b>Well Error:</b>	0.0ft	<b>Output errors are at</b>	2.00 sigma
<b>Reference Wellbore</b>	Wellbore #1	<b>Database:</b>	Landmark
<b>Reference Design:</b>	Plan #1 (5-20-13)	<b>Offset TVD Reference:</b>	Offset Datum

Offset Design													Offset Site Error:	0.0 ft
Survey Program: 0-MWD													Offset Well Error:	0.0 ft
Reference		Offset		Semi Major Axis			Distance							Warning
Measured Depth (ft)	Vertical Depth (ft)	Measured Depth (ft)	Vertical Depth (ft)	Reference (ft)	Offset (ft)	Highside Toolface (°)	Offset Wellbore Centre +N/-S (ft)	+E/-W (ft)	Between Centres (ft)	Between Ellipses (ft)	Minimum Separation (ft)	Separation Factor		
0.0	0.0	1.0	1.0	0.0	0.0	168.67	-22.2	4.5	22.7	22.7	0.00	N/A		
100.0	100.0	101.0	101.0	0.1	0.1	168.67	-22.2	4.5	22.7	22.4	0.23	99.840		
200.0	200.0	201.0	201.0	0.3	0.3	168.67	-22.2	4.5	22.7	22.0	0.68	33.501		
300.0	300.0	301.0	301.0	0.6	0.6	168.67	-22.2	4.5	22.7	21.5	1.13	20.128		
400.0	400.0	401.0	401.0	0.8	0.8	168.67	-22.2	4.5	22.7	21.1	1.58	14.385		
500.0	500.0	501.0	501.0	1.0	1.0	168.67	-22.2	4.5	22.7	20.6	2.03	11.192		
600.0	600.0	601.0	601.0	1.2	1.2	168.67	-22.2	4.5	22.7	20.2	2.47	9.159		
700.0	700.0	701.0	701.0	1.5	1.5	168.67	-22.2	4.5	22.7	19.7	2.92	7.751		
766.3	766.3	767.3	767.3	1.6	1.6	168.67	-22.2	4.5	22.7	19.4	3.22	7.034 CC		
800.0	800.0	801.0	801.0	1.7	1.7	168.67	-22.2	4.5	22.7	19.3	3.37	6.719 ES		
900.0	900.0	900.4	900.3	1.9	1.9	171.40	-23.8	3.6	24.0	20.2	3.80	6.333		
1,000.0	1,000.0	999.5	999.3	2.1	2.1	177.87	-28.3	1.1	28.3	24.1	4.20	6.747		
1,100.0	1,100.0	1,098.8	1,098.2	2.3	2.3	-41.71	-35.8	-3.2	34.7	30.1	4.60	7.553		
1,200.0	1,199.8	1,198.1	1,197.0	2.5	2.5	-40.09	-44.8	-8.2	40.2	35.2	4.98	8.073		
1,300.0	1,299.5	1,298.1	1,296.4	2.7	2.7	-41.79	-53.9	-13.3	43.0	37.7	5.38	7.998		
1,400.0	1,398.7	1,398.0	1,395.8	2.9	3.0	-46.43	-63.0	-18.4	43.5	37.6	5.82	7.472		
1,467.8	1,465.9	1,465.7	1,463.2	3.1	3.2	-50.37	-69.1	-21.9	43.4	37.2	6.14	7.060		
1,500.0	1,497.8	1,497.9	1,495.2	3.2	3.2	-52.24	-72.0	-23.5	43.4	37.1	6.30	6.887		
1,600.0	1,596.9	1,597.8	1,594.5	3.5	3.5	-58.02	-81.1	-28.6	43.7	36.9	6.82	6.418		
1,700.0	1,696.0	1,697.7	1,693.9	3.7	3.8	-63.64	-90.2	-33.7	44.5	37.2	7.37	6.048		
1,800.0	1,795.1	1,797.6	1,793.3	4.0	4.1	-69.02	-99.2	-38.8	45.8	37.8	7.94	5.762		
1,900.0	1,894.2	1,897.5	1,892.6	4.3	4.3	-74.07	-108.3	-43.9	47.4	38.8	8.54	5.546		
2,000.0	1,993.3	1,997.4	1,992.0	4.6	4.6	-78.77	-117.4	-49.0	49.3	40.1	9.15	5.388		
2,100.0	2,092.4	2,097.3	2,091.3	4.9	4.9	-83.08	-126.4	-54.1	51.5	41.8	9.77	5.277		
2,200.0	2,191.5	2,197.2	2,190.7	5.3	5.2	-87.01	-135.5	-59.2	54.1	43.7	10.39	5.203		
2,300.0	2,290.6	2,297.1	2,290.1	5.6	5.5	-90.58	-144.6	-64.3	56.8	45.8	11.01	5.159		
2,400.0	2,389.7	2,397.0	2,389.4	5.9	5.8	-93.81	-153.6	-69.4	59.7	48.1	11.63	5.137		
2,500.0	2,488.8	2,496.9	2,488.8	6.2	6.1	-96.73	-162.7	-74.5	62.9	50.6	12.25	5.133		
2,600.0	2,587.9	2,596.8	2,588.1	6.5	6.4	-99.37	-171.8	-79.6	66.1	53.3	12.86	5.141		
2,700.0	2,687.0	2,696.7	2,687.5	6.9	6.6	-101.75	-180.8	-84.7	69.5	56.0	13.47	5.160		
2,800.0	2,786.1	2,796.6	2,786.9	7.2	6.9	-103.91	-189.9	-89.7	73.0	58.9	14.08	5.187		
2,900.0	2,885.2	2,896.5	2,886.2	7.5	7.2	-105.87	-199.0	-94.8	76.6	61.9	14.68	5.218		
3,000.0	2,984.3	2,996.4	2,985.6	7.9	7.5	-107.65	-208.0	-99.9	80.3	65.0	15.28	5.254		
3,100.0	3,083.4	3,096.3	3,084.9	8.2	7.8	-109.28	-217.1	-105.0	84.0	68.1	15.87	5.292		
3,200.0	3,182.5	3,196.2	3,184.3	8.5	8.1	-110.76	-226.2	-110.1	87.8	71.4	16.47	5.332		
3,300.0	3,281.6	3,296.1	3,283.7	8.9	8.4	-112.12	-235.2	-115.2	91.7	74.6	17.06	5.374		
3,400.0	3,380.7	3,396.0	3,383.0	9.2	8.7	-113.37	-244.3	-120.3	95.6	77.9	17.65	5.415		
3,500.0	3,479.8	3,495.9	3,482.4	9.5	9.0	-114.53	-253.4	-125.4	99.5	81.3	18.24	5.457		
3,600.0	3,578.9	3,595.9	3,581.7	9.9	9.3	-115.59	-262.4	-130.5	103.5	84.7	18.83	5.499		
3,700.0	3,678.0	3,695.8	3,681.1	10.2	9.6	-116.29	-271.5	-135.6	107.2	87.8	19.40	5.529		
3,800.0	3,777.6	3,795.7	3,780.5	10.4	9.9	-115.43	-280.6	-140.7	109.5	89.6	19.94	5.492		
3,900.0	3,877.4	3,895.6	3,879.9	10.6	10.2	-112.94	-289.6	-145.8	110.5	89.9	20.52	5.384		
4,000.0	3,977.4	3,995.3	3,979.0	10.8	10.5	-108.80	-298.7	-150.9	110.4	89.3	21.09	5.235		
4,058.2	4,035.5	4,053.2	4,036.6	10.9	10.7	-105.83	-303.9	-153.8	110.3	88.9	21.42	5.152		
4,100.0	4,077.4	4,094.7	4,077.9	10.9	10.8	121.53	-307.7	-155.9	110.4	92.4	17.99	6.133		
4,200.0	4,177.4	4,194.2	4,176.8	11.1	11.1	126.87	-316.7	-161.0	111.3	92.8	18.41	6.043		
4,300.0	4,277.4	4,293.7	4,275.8	11.2	11.4	132.08	-325.8	-166.1	113.1	94.2	18.90	5.984		
4,400.0	4,377.4	4,393.1	4,374.7	11.4	11.7	137.08	-334.8	-171.2	115.9	96.4	19.46	5.954		
4,500.0	4,477.4	4,492.6	4,473.6	11.6	12.0	141.82	-343.8	-176.2	119.5	99.4	20.07	5.953		
4,600.0	4,577.4	4,592.0	4,572.5	11.7	12.3	146.26	-352.9	-181.3	123.8	103.1	20.71	5.978		
4,700.0	4,677.4	4,691.5	4,671.4	11.9	12.6	150.37	-361.9	-186.4	128.9	107.5	21.38	6.029		
4,800.0	4,777.4	4,792.8	4,772.3	12.1	12.9	153.92	-370.3	-191.1	134.1	112.1	22.02	6.089		

CC - Min centre to center distance or convergent point, SF - min separation factor, ES - min ellipse separation

<b>Company:</b>	Synergy Resources	<b>Local Co-ordinate Reference:</b>	Well SRC Kelly Farms 22-4-3NHZ
<b>Project:</b>	SEC.4-T5N-R66W	<b>TVD Reference:</b>	WELL @ 4766.0ft (Original Well Elev)
<b>Reference Site:</b>	SRC Kelly Farms Pad Sec.4-T5N-R66W	<b>MD Reference:</b>	WELL @ 4766.0ft (Original Well Elev)
<b>Site Error:</b>	0.0ft	<b>North Reference:</b>	True
<b>Reference Well:</b>	SRC Kelly Farms 22-4-3NHZ	<b>Survey Calculation Method:</b>	Minimum Curvature
<b>Well Error:</b>	0.0ft	<b>Output errors are at</b>	2.00 sigma
<b>Reference Wellbore</b>	Wellbore #1	<b>Database:</b>	Landmark
<b>Reference Design:</b>	Plan #1 (5-20-13)	<b>Offset TVD Reference:</b>	Offset Datum

Offset Design												Offset Site Error:	0.0ft
Survey Program: 0-MWD												Offset Well Error:	0.0ft
Reference		Offset		Semi Major Axis			Distance						Warning
Measured Depth (ft)	Vertical Depth (ft)	Measured Depth (ft)	Vertical Depth (ft)	Reference (ft)	Offset (ft)	Highside Toolface (°)	Offset Wellbore Centre +N/-S (ft)	+E/-W (ft)	Between Centres (ft)	Between Ellipses (ft)	Minimum Separation (ft)	Separation Factor	
4,900.0	4,877.4	4,895.5	4,874.8	12.3	13.1	156.09	-375.8	-194.2	137.7	115.2	22.55	6.107	
5,000.0	4,977.4	4,998.5	4,977.7	12.4	13.2	156.96	-378.1	-195.5	139.3	116.3	22.97	6.062	
5,100.0	5,077.4	5,099.1	5,078.4	12.6	13.4	156.99	-378.2	-195.5	139.3	116.0	23.35	5.965	
5,200.0	5,177.4	5,199.1	5,178.4	12.8	13.6	156.99	-378.2	-195.5	139.3	115.6	23.72	5.874	
5,300.0	5,277.4	5,299.1	5,278.4	13.0	13.7	156.99	-378.2	-195.5	139.3	115.2	24.08	5.785	
5,400.0	5,377.4	5,399.1	5,378.4	13.1	13.9	156.99	-378.2	-195.5	139.3	114.9	24.45	5.697	
5,500.0	5,477.4	5,499.1	5,478.4	13.3	14.0	156.99	-378.2	-195.5	139.3	114.5	24.82	5.612	
5,600.0	5,577.4	5,599.1	5,578.4	13.5	14.2	156.99	-378.2	-195.5	139.3	114.1	25.20	5.529	
5,700.0	5,677.4	5,699.1	5,678.4	13.7	14.3	156.99	-378.2	-195.5	139.3	113.7	25.57	5.447	
5,800.0	5,777.4	5,799.1	5,778.4	13.9	14.5	156.99	-378.2	-195.5	139.3	113.4	25.95	5.368	
5,900.0	5,877.4	5,899.1	5,878.4	14.1	14.7	156.99	-378.2	-195.5	139.3	113.0	26.33	5.290	
6,000.0	5,977.4	5,999.1	5,978.4	14.2	14.8	156.99	-378.2	-195.5	139.3	112.6	26.71	5.215	
6,100.0	6,077.4	6,099.1	6,078.4	14.4	15.0	156.99	-378.2	-195.5	139.3	112.2	27.10	5.141	
6,200.0	6,177.4	6,199.1	6,178.4	14.6	15.2	156.99	-378.2	-195.5	139.3	111.8	27.49	5.068	
6,300.0	6,277.4	6,299.1	6,278.4	14.8	15.3	156.99	-378.2	-195.5	139.3	111.4	27.87	4.998	
6,400.0	6,377.3	6,396.5	6,375.7	15.0	15.5	69.27	-378.2	-194.7	139.2	109.5	29.67	4.692	
6,500.0	6,476.4	6,489.5	6,468.1	15.1	15.6	69.90	-378.2	-184.1	139.1	109.2	29.83	4.663	
6,550.8	6,525.8	6,536.9	6,514.4	15.2	15.7	70.37	-378.2	-174.2	139.0	109.2	29.83	4.662	
6,600.0	6,572.8	6,582.8	6,558.5	15.2	15.7	70.93	-378.2	-161.6	139.1	109.3	29.81	4.666	
6,700.0	6,664.5	6,676.4	6,645.6	15.2	15.8	72.34	-378.2	-127.5	139.3	109.6	29.71	4.688	
6,800.0	6,749.7	6,770.4	6,727.8	15.3	15.8	74.10	-378.2	-82.0	139.8	110.1	29.67	4.711	
6,900.0	6,826.9	6,865.0	6,803.8	15.3	15.9	76.17	-378.2	-25.8	140.6	110.7	29.86	4.707	
7,000.0	6,894.6	6,960.2	6,872.1	15.5	15.9	78.49	-378.2	40.4	141.8	111.3	30.50	4.651	
7,100.0	6,951.3	7,056.2	6,931.5	16.1	16.0	81.00	-378.2	115.7	143.6	111.8	31.74	4.524	
7,200.0	6,996.0	7,152.9	6,980.7	17.2	16.7	83.63	-378.2	198.9	145.8	112.2	33.68	4.330	
7,300.0	7,027.9	7,250.6	7,018.5	18.6	17.9	86.30	-378.2	288.9	148.6	112.3	36.32	4.092	
7,400.0	7,046.3	7,349.2	7,043.9	20.3	19.5	88.95	-378.2	384.2	151.9	112.4	39.54	3.842	
7,500.0	7,051.0	7,448.9	7,056.0	22.1	21.3	91.48	-378.2	483.0	155.7	112.5	43.16	3.607	
7,600.0	7,051.0	7,549.1	7,057.0	24.2	23.4	91.80	-378.2	583.2	159.4	112.2	47.20	3.377	
7,700.0	7,051.0	7,649.0	7,057.0	26.4	25.5	91.76	-378.2	683.1	163.2	111.6	51.53	3.166	
7,800.0	7,051.0	7,749.0	7,057.0	28.7	27.8	91.72	-378.2	783.0	166.9	110.8	56.08	2.976	
7,900.0	7,051.0	7,848.9	7,057.0	31.0	30.1	91.68	-378.2	883.0	170.6	109.8	60.81	2.806	
8,000.0	7,051.0	7,948.8	7,057.0	33.5	32.6	91.64	-378.2	982.9	174.3	108.7	65.67	2.655	
8,100.0	7,051.0	8,048.8	7,057.0	36.0	35.0	91.61	-378.2	1,082.8	178.1	107.4	70.65	2.521	
8,200.0	7,051.0	8,148.7	7,057.0	38.5	37.6	91.58	-378.2	1,182.8	181.8	106.1	75.71	2.401	
8,300.0	7,051.0	8,248.6	7,057.0	41.1	40.1	91.55	-378.2	1,282.7	185.5	104.7	80.85	2.295	
8,400.0	7,051.0	8,348.5	7,057.0	43.7	42.7	91.51	-378.2	1,382.6	189.3	103.2	86.04	2.200	
8,500.0	7,051.0	8,448.5	7,057.0	46.3	45.3	91.49	-378.1	1,482.6	193.0	101.7	91.28	2.114	
8,600.0	7,051.0	8,548.4	7,057.0	48.9	48.0	91.46	-378.1	1,582.5	196.7	100.2	96.56	2.037	
8,700.0	7,051.0	8,648.3	7,057.0	51.6	50.6	91.43	-378.1	1,682.4	200.5	98.6	101.88	1.968	
8,800.0	7,051.0	8,748.3	7,057.0	54.3	53.3	91.40	-378.1	1,782.3	204.2	97.0	107.23	1.904	
8,900.0	7,051.0	8,848.2	7,057.0	56.9	56.0	91.38	-378.1	1,882.3	207.9	95.3	112.60	1.847	
9,000.0	7,051.0	8,948.1	7,057.0	59.6	58.7	91.35	-378.1	1,982.2	211.7	93.7	117.99	1.794	
9,100.0	7,051.0	9,048.1	7,057.0	62.3	61.4	91.33	-378.1	2,082.1	215.4	92.0	123.40	1.745	
9,200.0	7,051.0	9,148.0	7,057.0	65.0	64.1	91.31	-378.1	2,182.1	219.1	90.3	128.83	1.701	
9,300.0	7,051.0	9,247.9	7,057.0	67.8	66.8	91.29	-378.1	2,282.0	222.9	88.6	134.27	1.660	
9,400.0	7,051.0	9,347.9	7,057.0	70.5	69.6	91.27	-378.1	2,381.9	226.6	86.9	139.73	1.622	
9,500.0	7,051.0	9,447.8	7,057.0	73.2	72.3	91.24	-378.1	2,481.9	230.3	85.1	145.19	1.586	
9,600.0	7,051.0	9,547.7	7,057.0	76.0	75.0	91.22	-378.1	2,581.8	234.1	83.4	150.67	1.553	
9,700.0	7,051.0	9,647.6	7,057.0	78.7	77.8	91.21	-378.1	2,681.7	237.8	81.6	156.15	1.523	
9,800.0	7,051.0	9,747.6	7,057.0	81.4	80.5	91.19	-378.1	2,781.7	241.5	79.9	161.65	1.494 Level 3	
9,900.0	7,051.0	9,847.5	7,057.0	84.2	83.3	91.17	-378.1	2,881.6	245.2	78.1	167.15	1.467 Level 3	

CC - Min centre to center distance or convergent point, SF - min separation factor, ES - min ellipse separation



<b>Company:</b>	Synergy Resources	<b>Local Co-ordinate Reference:</b>	Well SRC Kelly Farms 22-4-3NHZ
<b>Project:</b>	SEC.4-T5N-R66W	<b>TVD Reference:</b>	WELL @ 4766.0ft (Original Well Elev)
<b>Reference Site:</b>	SRC Kelly Farms Pad Sec.4-T5N-R66W	<b>MD Reference:</b>	WELL @ 4766.0ft (Original Well Elev)
<b>Site Error:</b>	0.0ft	<b>North Reference:</b>	True
<b>Reference Well:</b>	SRC Kelly Farms 22-4-3NHZ	<b>Survey Calculation Method:</b>	Minimum Curvature
<b>Well Error:</b>	0.0ft	<b>Output errors are at</b>	2.00 sigma
<b>Reference Wellbore</b>	Wellbore #1	<b>Database:</b>	Landmark
<b>Reference Design:</b>	Plan #1 (5-20-13)	<b>Offset TVD Reference:</b>	Offset Datum

<b>Offset Design</b>												<b>Offset Site Error:</b>	0.0 ft
Survey Program: 0-MWD												<b>Offset Well Error:</b>	0.0 ft
Reference		Offset		Semi Major Axis			Distance						
Measured Depth (ft)	Vertical Depth (ft)	Measured Depth (ft)	Vertical Depth (ft)	Reference (ft)	Offset (ft)	Highside Toolface (°)	Offset Wellbore Centre +N/-S (ft)	+E/-W (ft)	Between Centres (ft)	Between Ellipses (ft)	Minimum Separation (ft)	Separation Factor	Warning
10,000.0	7,051.0	9,947.4	7,057.0	86.9	86.1	91.15	-378.1	2,981.5	249.0	76.3	172.66	1.442	Level 3
10,100.0	7,051.0	10,047.4	7,057.0	89.7	88.8	91.13	-378.1	3,081.4	252.7	74.5	178.17	1.418	Level 3
10,200.0	7,051.0	10,147.3	7,057.0	92.4	91.6	91.12	-378.1	3,181.4	256.4	72.8	183.69	1.396	Level 3
10,300.0	7,051.0	10,247.2	7,057.0	95.2	94.3	91.10	-378.1	3,281.3	260.2	71.0	189.21	1.375	Level 3
10,400.0	7,051.0	10,347.2	7,057.0	98.0	97.1	91.09	-378.1	3,381.2	263.9	69.2	194.74	1.355	Level 3
10,500.0	7,051.0	10,447.1	7,057.0	100.7	99.9	91.07	-378.1	3,481.2	267.6	67.4	200.27	1.336	Level 3
10,600.0	7,051.0	10,547.0	7,057.0	103.5	102.6	91.06	-378.1	3,581.1	271.4	65.6	205.81	1.319	Level 3
10,700.0	7,051.0	10,646.9	7,057.0	106.3	105.4	91.04	-378.1	3,681.0	275.1	63.8	211.35	1.302	Level 3
10,800.0	7,051.0	10,746.9	7,057.0	109.0	108.2	91.03	-378.0	3,781.0	278.8	61.9	216.89	1.286	Level 3
10,900.0	7,051.0	10,846.8	7,057.0	111.8	111.0	91.01	-378.0	3,880.9	282.6	60.1	222.44	1.270	Level 3
11,000.0	7,051.0	10,946.7	7,057.0	114.6	113.7	91.00	-378.0	3,980.8	286.3	58.3	227.99	1.256	Level 3
11,100.0	7,051.0	11,046.7	7,057.0	117.3	116.5	90.99	-378.0	4,080.7	290.0	56.5	233.54	1.242	Level 2
11,200.0	7,051.0	11,146.6	7,057.0	120.1	119.3	90.98	-378.0	4,180.7	293.8	54.7	239.09	1.229	Level 2
11,300.0	7,051.0	11,246.5	7,057.0	122.9	122.1	90.96	-378.0	4,280.6	297.5	52.9	244.65	1.216	Level 2
11,400.0	7,051.0	11,346.5	7,057.0	125.7	124.9	90.95	-378.0	4,380.5	301.2	51.0	250.20	1.204	Level 2
11,500.0	7,051.0	11,446.4	7,057.0	128.4	127.7	90.94	-378.0	4,480.5	305.0	49.2	255.76	1.192	Level 2
11,600.0	7,051.0	11,546.3	7,057.0	131.2	130.4	90.93	-378.0	4,580.4	308.7	47.4	261.33	1.181	Level 2
11,700.0	7,051.0	11,646.2	7,057.0	134.0	133.2	90.92	-378.0	4,680.3	312.4	45.5	266.89	1.171	Level 2
11,800.0	7,051.0	11,746.2	7,057.0	136.8	136.0	90.91	-378.0	4,780.3	316.2	43.7	272.45	1.160	Level 2
11,900.0	7,051.0	11,846.1	7,057.0	139.6	138.8	90.90	-378.0	4,880.2	319.9	41.9	278.02	1.151	Level 2
12,000.0	7,051.0	11,946.0	7,057.0	142.3	141.6	90.89	-378.0	4,980.1	323.6	40.0	283.59	1.141	Level 2
12,100.0	7,051.0	12,046.0	7,057.0	145.1	144.4	90.88	-378.0	5,080.0	327.4	38.2	289.16	1.132	Level 2, SF
12,154.4	7,051.0	12,070.6	7,057.0	146.6	145.1	90.87	-378.0	5,104.7	330.7	39.4	291.36	1.135	Level 2

<b>Company:</b>	Synergy Resources	<b>Local Co-ordinate Reference:</b>	Well SRC Kelly Farms 22-4-3NHZ
<b>Project:</b>	SEC.4-T5N-R66W	<b>TVD Reference:</b>	WELL @ 4766.0ft (Original Well Elev)
<b>Reference Site:</b>	SRC Kelly Farms Pad Sec.4-T5N-R66W	<b>MD Reference:</b>	WELL @ 4766.0ft (Original Well Elev)
<b>Site Error:</b>	0.0ft	<b>North Reference:</b>	True
<b>Reference Well:</b>	SRC Kelly Farms 22-4-3NHZ	<b>Survey Calculation Method:</b>	Minimum Curvature
<b>Well Error:</b>	0.0ft	<b>Output errors are at</b>	2.00 sigma
<b>Reference Wellbore</b>	Wellbore #1	<b>Database:</b>	Landmark
<b>Reference Design:</b>	Plan #1 (5-20-13)	<b>Offset TVD Reference:</b>	Offset Datum

Offset Design													Offset Site Error:	0.0 ft
Survey Program: 0-MWD													Offset Well Error:	0.0 ft
Reference		Offset		Semi Major Axis			Distance							Warning
Measured Depth (ft)	Vertical Depth (ft)	Measured Depth (ft)	Vertical Depth (ft)	Reference (ft)	Offset (ft)	Highside Toolface (°)	Offset Wellbore Centre +N/-S (ft)	+E/-W (ft)	Between Centres (ft)	Between Ellipses (ft)	Minimum Separation (ft)	Separation Factor		
0.0	0.0	0.0	0.0	0.0	0.0	78.46	8.0	39.3	40.1					
100.0	100.0	99.0	99.0	0.1	0.1	78.46	8.0	39.3	40.1	39.8	0.22	179.138		
200.0	200.0	199.0	199.0	0.3	0.3	78.46	8.0	39.3	40.1	39.4	0.67	59.613		
300.0	300.0	299.0	299.0	0.6	0.6	78.46	8.0	39.3	40.1	38.9	1.12	35.720		
400.0	400.0	399.0	399.0	0.8	0.8	78.46	8.0	39.3	40.1	38.5	1.57	25.500		
500.0	500.0	499.0	499.0	1.0	1.0	78.46	8.0	39.3	40.1	38.0	2.02	19.827		
600.0	600.0	599.0	599.0	1.2	1.2	78.46	8.0	39.3	40.1	37.6	2.47	16.219		
700.0	700.0	699.0	699.0	1.5	1.5	78.46	8.0	39.3	40.1	37.1	2.92	13.722		
800.0	800.0	799.0	799.0	1.7	1.7	78.46	8.0	39.3	40.1	36.7	3.37	11.891		
900.0	900.0	899.0	899.0	1.9	1.9	78.46	8.0	39.3	40.1	36.2	3.82	10.491		
1,000.0	1,000.0	999.0	999.0	2.1	2.1	78.46	8.0	39.3	40.1	35.8	4.27	9.386 CC, ES		
1,100.0	1,100.0	1,098.3	1,098.3	2.3	2.4	-147.93	8.2	39.6	41.9	37.2	4.69	8.947 SF		
1,200.0	1,199.8	1,196.4	1,196.3	2.5	2.6	-151.64	9.4	42.7	49.8	44.8	5.08	9.816		
1,300.0	1,299.5	1,293.3	1,293.0	2.7	2.8	-155.74	12.0	48.8	64.4	58.9	5.47	11.765		
1,400.0	1,398.7	1,389.6	1,388.9	2.9	3.0	-159.10	15.6	57.5	85.4	79.5	5.88	14.517		
1,500.0	1,497.8	1,486.9	1,485.6	3.2	3.2	-161.45	19.5	66.9	108.2	101.9	6.29	17.200		
1,600.0	1,596.9	1,584.2	1,582.4	3.5	3.5	-162.98	23.3	76.2	131.2	124.5	6.71	19.546		
1,700.0	1,696.0	1,681.5	1,679.1	3.7	3.7	-164.06	27.2	85.5	154.2	147.1	7.14	21.603		
1,800.0	1,795.1	1,778.7	1,775.9	4.0	4.0	-164.85	31.1	94.8	177.3	169.7	7.57	23.414		
1,900.0	1,894.2	1,876.0	1,872.6	4.3	4.2	-165.46	34.9	104.1	200.4	192.4	8.01	25.014		
2,000.0	1,993.3	1,973.3	1,969.4	4.6	4.5	-165.95	38.8	113.5	223.5	215.0	8.45	26.439		
2,100.0	2,092.4	2,070.6	2,066.1	4.9	4.8	-166.34	42.7	122.8	246.6	237.7	8.90	27.712		
2,200.0	2,191.5	2,167.8	2,162.9	5.3	5.0	-166.67	46.6	132.1	269.7	260.4	9.35	28.854		
2,300.0	2,290.6	2,265.1	2,259.6	5.6	5.3	-166.94	50.4	141.4	292.9	283.1	9.80	29.884		
2,400.0	2,389.7	2,362.4	2,356.4	5.9	5.6	-167.18	54.3	150.8	316.0	305.7	10.25	30.817		
2,500.0	2,488.8	2,459.7	2,453.1	6.2	5.9	-167.38	58.2	160.1	339.1	328.4	10.71	31.665		
2,600.0	2,587.9	2,557.0	2,549.9	6.5	6.1	-167.56	62.0	169.4	362.3	351.1	11.17	32.439		
2,700.0	2,687.0	2,654.2	2,646.7	6.9	6.4	-167.72	65.9	178.7	385.4	373.8	11.63	33.147		
2,800.0	2,786.1	2,751.5	2,743.4	7.2	6.7	-167.85	69.8	188.0	408.6	396.5	12.09	33.798		
2,900.0	2,885.2	2,848.8	2,840.2	7.5	7.0	-167.98	73.6	197.4	431.7	419.2	12.55	34.397		
3,000.0	2,984.3	2,946.1	2,936.9	7.9	7.2	-168.09	77.5	206.7	454.9	441.9	13.02	34.951		
3,100.0	3,083.4	3,043.3	3,033.7	8.2	7.5	-168.19	81.4	216.0	478.1	464.6	13.48	35.465		
3,200.0	3,182.5	3,140.6	3,130.4	8.5	7.8	-168.28	85.2	225.3	501.2	487.3	13.95	35.942		
3,300.0	3,281.6	3,237.9	3,227.2	8.9	8.1	-168.36	89.1	234.6	524.4	510.0	14.41	36.386		
3,400.0	3,380.7	3,335.2	3,323.9	9.2	8.4	-168.44	93.0	244.0	547.5	532.7	14.88	36.800		
3,500.0	3,479.8	3,432.5	3,420.7	9.5	8.6	-168.51	96.8	253.3	570.7	555.4	15.35	37.188		
3,600.0	3,578.9	3,529.7	3,517.4	9.9	8.9	-168.57	100.7	262.6	593.9	578.0	15.81	37.551		
3,700.0	3,678.0	3,627.2	3,614.3	10.2	9.2	-168.67	104.6	271.9	616.4	600.1	16.30	37.808		
3,800.0	3,777.6	3,725.3	3,711.9	10.4	9.5	-168.74	108.5	281.3	635.8	619.0	16.77	37.911		
3,900.0	3,877.4	3,824.0	3,810.1	10.6	9.8	-168.72	112.4	290.8	651.8	634.6	17.22	37.855		
4,000.0	3,977.4	3,923.1	3,908.7	10.8	10.1	-168.64	116.4	300.3	664.5	646.8	17.65	37.653		
4,100.0	4,077.4	4,022.6	4,007.6	10.9	10.4	56.52	120.3	309.8	674.7	653.6	21.12	31.949		
4,200.0	4,177.4	4,122.1	4,106.5	11.1	10.6	56.68	124.3	319.4	684.9	663.4	21.57	31.757		
4,300.0	4,277.4	4,221.5	4,205.5	11.2	10.9	56.84	128.2	328.9	695.1	673.1	22.02	31.570		
4,400.0	4,377.4	4,321.0	4,304.4	11.4	11.2	57.00	132.2	338.4	705.3	682.8	22.47	31.386		
4,500.0	4,477.4	4,420.4	4,403.3	11.6	11.5	57.15	136.1	348.0	715.5	692.6	22.93	31.208		
4,600.0	4,577.4	4,519.9	4,502.2	11.7	11.8	57.29	140.1	357.5	725.7	702.4	23.39	31.033		
4,700.0	4,677.4	4,619.4	4,601.2	11.9	12.1	57.44	144.0	367.0	736.0	712.1	23.85	30.862		
4,800.0	4,777.4	4,718.8	4,700.1	12.1	12.4	57.58	148.0	376.5	746.2	721.9	24.31	30.696		
4,900.0	4,877.4	4,818.3	4,799.0	12.3	12.7	57.71	151.9	386.1	756.4	731.6	24.77	30.533		
5,000.0	4,977.4	4,917.7	4,897.9	12.4	13.0	57.84	155.9	395.6	766.6	741.4	25.24	30.374		
5,100.0	5,077.4	5,017.2	4,996.9	12.6	13.3	57.97	159.9	405.1	776.9	751.1	25.71	30.219		

CC - Min centre to center distance or convergent point, SF - min separation factor, ES - min ellipse separation

Offset Design													Offset Site Error:	
Survey Program: 0-MWD													Offset Well Error:	
Reference		Offset		Semi Major Axis			Distance							
Measured Depth	Vertical Depth	Measured Depth	Vertical Depth	Reference	Offset	Highside Toolface	Offset Wellbore Centre		Between Centres	Between Ellipses	Minimum Separation	Separation Factor	Warning	
(ft)	(ft)	(ft)	(ft)	(ft)	(ft)	(°)	+N/-S (ft)	+E/-W (ft)	(ft)	(ft)	(ft)			
5,200.0	5,177.4	5,116.7	5,095.8	12.8	13.6	58.09	163.8	414.7	787.1	760.9	26.18	30.068		
5,300.0	5,277.4	5,216.1	5,194.7	13.0	13.9	58.22	167.8	424.2	797.3	770.7	26.65	29.920		
5,400.0	5,377.4	5,350.7	5,328.8	13.1	14.2	58.34	172.1	434.5	805.6	778.4	27.14	29.679		
5,500.0	5,477.4	5,489.2	5,467.2	13.3	14.4	58.40	173.9	439.1	809.1	781.5	27.57	29.344		
5,600.0	5,577.4	5,598.4	5,576.4	13.5	14.6	58.40	174.0	439.3	809.2	781.3	27.94	28.967		
5,700.0	5,677.4	5,698.4	5,676.4	13.7	14.8	58.40	174.0	439.3	809.2	780.9	28.30	28.591		
5,800.0	5,777.4	5,798.4	5,776.4	13.9	15.0	58.40	174.0	439.3	809.2	780.6	28.67	28.222		
5,900.0	5,877.4	5,898.4	5,876.4	14.1	15.1	58.40	174.0	439.3	809.2	780.2	29.05	27.861		
6,000.0	5,977.4	5,998.4	5,976.4	14.2	15.3	58.40	174.0	439.3	809.2	779.8	29.42	27.507		
6,100.0	6,077.4	6,098.4	6,076.4	14.4	15.5	58.40	174.0	439.3	809.2	779.4	29.80	27.159		
6,200.0	6,177.4	6,198.4	6,176.4	14.6	15.7	58.40	174.0	439.3	809.2	779.1	30.17	26.819		
6,300.0	6,277.4	6,298.4	6,276.4	14.8	15.9	58.40	174.0	439.3	809.2	778.7	30.55	26.485		
6,400.0	6,377.3	6,882.5	6,816.8	15.0	16.1	-39.34	177.7	260.9	797.8	769.2	28.67	27.833		
6,500.0	6,476.4	7,231.5	7,013.6	15.1	17.9	-74.50	183.4	-23.2	722.7	690.7	31.93	22.634		
6,600.0	6,572.8	7,259.3	7,022.9	15.2	18.2	-87.83	184.0	-49.4	645.1	612.3	32.76	19.694		
6,700.0	6,664.5	7,241.5	7,017.1	15.2	18.0	-93.61	183.6	-32.6	573.8	541.2	32.67	17.563		
6,800.0	6,749.7	7,209.2	7,005.4	15.3	17.7	-95.64	183.0	-2.5	512.2	479.8	32.41	15.804		
6,900.0	6,826.9	7,170.5	6,989.6	15.3	17.3	-95.10	182.3	32.9	463.7	431.4	32.26	14.374		
7,000.0	6,894.6	7,128.3	6,970.2	15.5	17.0	-92.49	181.5	70.3	431.4	399.0	32.37	13.329		
7,100.0	6,951.3	7,084.2	6,947.6	16.1	16.7	-88.12	180.8	108.2	417.7	384.9	32.78	12.743		
7,123.3	6,962.8	7,073.7	6,941.9	16.4	16.6	-86.88	180.6	117.1	417.2	384.2	32.94	12.665		
7,200.0	6,996.0	7,038.7	6,922.0	17.2	16.4	-82.30	180.0	145.8	422.3	388.9	33.38	12.651		
7,300.0	7,027.9	6,992.4	6,893.5	18.6	16.3	-75.47	179.3	182.2	442.6	408.7	33.94	13.039		
7,400.0	7,046.3	6,950.0	6,865.3	20.3	16.2	-68.61	178.6	213.9	474.4	440.1	34.33	13.821		
7,500.0	7,051.0	6,900.0	6,829.8	22.1	16.1	-61.70	177.9	249.1	513.5	479.1	34.37	14.939		
7,600.0	7,051.0	6,850.0	6,792.0	24.2	16.1	-57.63	177.2	281.7	560.6	525.7	34.94	16.045		
7,700.0	7,051.0	6,817.2	6,765.9	26.4	16.1	-55.01	176.8	301.7	616.3	580.4	35.90	17.168		
7,800.0	7,051.0	6,784.3	6,738.9	28.7	16.1	-52.46	176.4	320.4	679.1	642.3	36.81	18.450		
7,900.0	7,051.0	6,750.0	6,709.8	31.0	16.1	-49.89	176.1	338.7	747.8	710.2	37.61	19.881		
8,000.0	7,051.0	6,729.9	6,692.4	33.5	16.1	-48.43	175.9	348.7	821.1	782.3	38.82	21.150		
8,100.0	7,051.0	6,700.0	6,666.0	36.0	16.1	-46.34	175.6	362.7	898.4	858.8	39.66	22.655		
8,200.0	7,051.0	6,700.0	6,666.0	38.5	16.1	-46.34	175.6	362.7	978.9	937.4	41.53	23.570		

<b>Company:</b>	Synergy Resources	<b>Local Co-ordinate Reference:</b>	Well SRC Kelly Farms 22-4-3NHZ
<b>Project:</b>	SEC.4-T5N-R66W	<b>TVD Reference:</b>	WELL @ 4766.0ft (Original Well Elev)
<b>Reference Site:</b>	SRC Kelly Farms Pad Sec.4-T5N-R66W	<b>MD Reference:</b>	WELL @ 4766.0ft (Original Well Elev)
<b>Site Error:</b>	0.0ft	<b>North Reference:</b>	True
<b>Reference Well:</b>	SRC Kelly Farms 22-4-3NHZ	<b>Survey Calculation Method:</b>	Minimum Curvature
<b>Well Error:</b>	0.0ft	<b>Output errors are at</b>	2.00 sigma
<b>Reference Wellbore</b>	Wellbore #1	<b>Database:</b>	Landmark
<b>Reference Design:</b>	Plan #1 (5-20-13)	<b>Offset TVD Reference:</b>	Offset Datum

Offset Design													Offset Site Error:	0.0 ft
Survey Program: 0-MWD													Offset Well Error:	0.0 ft
Reference		Offset		Semi Major Axis			Distance							Warning
Measured Depth (ft)	Vertical Depth (ft)	Measured Depth (ft)	Vertical Depth (ft)	Reference (ft)	Offset (ft)	Highside Toolface (°)	Offset Wellbore Centre +N/-S (ft)	+E/-W (ft)	Between Centres (ft)	Between Ellipses (ft)	Minimum Separation (ft)	Separation Factor		
0.0	0.0	0.0	0.0	0.0	0.0	108.01	-14.2	43.7	46.0					
100.0	100.0	98.0	98.0	0.1	0.1	108.01	-14.2	43.7	46.0	45.7	0.22	206.536		
200.0	200.0	198.0	198.0	0.3	0.3	108.01	-14.2	43.7	46.0	45.3	0.67	68.616		
300.0	300.0	298.0	298.0	0.6	0.6	108.01	-14.2	43.7	46.0	44.8	1.12	41.059		
400.0	400.0	398.0	398.0	0.8	0.8	108.01	-14.2	43.7	46.0	44.4	1.57	29.294		
500.0	500.0	498.0	498.0	1.0	1.0	108.01	-14.2	43.7	46.0	43.9	2.02	22.770		
600.0	600.0	598.0	598.0	1.2	1.2	108.01	-14.2	43.7	46.0	43.5	2.47	18.622		
700.0	700.0	698.0	698.0	1.5	1.5	108.01	-14.2	43.7	46.0	43.0	2.92	15.753		
800.0	800.0	798.0	798.0	1.7	1.7	108.01	-14.2	43.7	46.0	42.6	3.37	13.650		
900.0	900.0	898.0	898.0	1.9	1.9	108.01	-14.2	43.7	46.0	42.1	3.82	12.042		
1,000.0	1,000.0	998.0	998.0	2.1	2.1	108.01	-14.2	43.7	46.0	41.7	4.27	10.773		
1,100.0	1,100.0	1,098.0	1,098.0	2.3	2.4	-118.88	-14.2	43.7	46.8	42.1	4.69	9.972		
1,200.0	1,199.8	1,197.8	1,197.8	2.5	2.6	-124.14	-14.2	43.7	49.5	44.4	5.10	9.715		
1,300.0	1,299.5	1,299.1	1,299.1	2.7	2.8	-130.96	-14.8	42.1	53.4	47.9	5.49	9.715		
1,400.0	1,398.7	1,400.7	1,400.5	2.9	3.0	-137.97	-16.8	37.2	57.1	51.2	5.88	9.704		
1,500.0	1,497.8	1,502.4	1,501.9	3.2	3.2	-144.06	-20.1	28.9	59.1	52.8	6.29	9.393		
1,600.0	1,596.9	1,604.3	1,603.0	3.5	3.4	-149.24	-24.8	17.3	58.2	51.4	6.71	8.670		
1,700.0	1,696.0	1,705.2	1,702.7	3.7	3.7	-154.35	-30.6	2.8	54.6	47.4	7.13	7.651		
1,800.0	1,795.1	1,805.0	1,801.2	4.0	4.0	-160.09	-36.5	-11.9	51.0	43.4	7.55	6.747		
1,900.0	1,894.2	1,904.8	1,899.7	4.3	4.3	-166.62	-42.4	-26.7	47.9	40.0	7.98	6.006		
2,000.0	1,993.3	2,004.6	1,998.2	4.6	4.6	-173.92	-48.3	-41.4	45.6	37.2	8.43	5.410		
2,100.0	2,092.4	2,104.4	2,096.8	4.9	4.9	178.16	-54.2	-56.2	44.1	35.2	8.93	4.942		
2,200.0	2,191.5	2,204.2	2,195.3	5.3	5.2	169.85	-60.1	-70.9	43.5	34.0	9.49	4.586		
2,214.6	2,206.0	2,218.8	2,209.7	5.3	5.3	168.62	-60.9	-73.1	43.5	33.9	9.58	4.542 CC		
2,300.0	2,290.6	2,304.0	2,293.8	5.6	5.6	161.48	-66.0	-85.7	43.9	33.7	10.13	4.329 ES		
2,400.0	2,389.7	2,403.8	2,392.3	5.9	5.9	153.41	-71.8	-100.4	45.1	34.3	10.84	4.160		
2,500.0	2,488.8	2,503.6	2,490.9	6.2	6.3	145.91	-77.7	-115.1	47.2	35.6	11.61	4.066		
2,600.0	2,587.9	2,603.4	2,589.4	6.5	6.6	139.15	-83.6	-129.9	50.0	37.6	12.40	4.034 SF		
2,700.0	2,687.0	2,703.2	2,687.9	6.9	7.0	133.18	-89.5	-144.6	53.4	40.3	13.20	4.050		
2,800.0	2,786.1	2,803.0	2,786.4	7.2	7.3	127.97	-95.4	-159.4	57.4	43.4	13.99	4.103		
2,900.0	2,885.2	2,902.8	2,885.0	7.5	7.7	123.47	-101.3	-174.1	61.8	47.0	14.77	4.180		
3,000.0	2,984.3	3,002.6	2,983.5	7.9	8.0	119.58	-107.2	-188.9	66.4	50.9	15.54	4.275		
3,100.0	3,083.4	3,102.4	3,082.0	8.2	8.4	116.22	-113.1	-203.6	71.4	55.1	16.30	4.381		
3,200.0	3,182.5	3,202.2	3,180.5	8.5	8.8	113.30	-119.0	-218.3	76.6	59.5	17.04	4.493		
3,300.0	3,281.6	3,301.9	3,279.1	8.9	9.1	110.76	-124.9	-233.1	81.9	64.1	17.78	4.608		
3,400.0	3,380.7	3,401.7	3,377.6	9.2	9.5	108.53	-130.8	-247.8	87.4	68.9	18.50	4.724		
3,500.0	3,479.8	3,501.5	3,476.1	9.5	9.9	106.56	-136.7	-262.6	93.0	73.8	19.22	4.838		
3,600.0	3,578.9	3,601.3	3,574.6	9.9	10.2	104.82	-142.6	-277.3	98.7	78.8	19.93	4.951		
3,700.0	3,678.0	3,701.1	3,673.1	10.2	10.6	102.98	-148.5	-292.1	104.3	83.7	20.61	5.060		
3,800.0	3,777.6	3,800.8	3,771.5	10.4	11.0	99.70	-154.4	-306.8	109.5	88.2	21.20	5.162		
3,900.0	3,877.4	3,900.2	3,869.7	10.6	11.3	95.03	-160.3	-321.5	114.6	92.9	21.71	5.277		
4,000.0	3,977.4	3,999.3	3,967.5	10.8	11.7	89.17	-166.1	-336.1	120.5	98.4	22.09	5.452		
4,100.0	4,077.4	4,098.0	4,065.0	10.9	12.1	-52.23	-172.0	-350.7	127.8	109.0	18.77	6.809		
4,200.0	4,177.4	4,196.7	4,162.4	11.1	12.5	-57.94	-177.8	-365.3	136.6	117.1	19.57	6.981		
4,300.0	4,277.4	4,295.5	4,259.9	11.2	12.8	-62.93	-183.6	-379.9	146.7	126.3	20.40	7.188		
4,400.0	4,377.4	4,394.2	4,357.4	11.4	13.2	-67.27	-189.5	-394.5	157.7	136.4	21.23	7.424		
4,500.0	4,477.4	4,492.9	4,454.8	11.6	13.6	-71.02	-195.3	-409.0	169.4	147.4	22.05	7.684		
4,600.0	4,577.4	4,592.1	4,552.7	11.7	13.9	-74.29	-201.2	-423.7	181.8	159.0	22.84	7.961		
4,700.0	4,677.4	4,696.7	4,656.3	11.9	14.2	-76.92	-206.5	-437.1	193.0	169.5	23.52	8.206		
4,800.0	4,777.4	4,802.2	4,761.3	12.1	14.4	-78.67	-210.5	-447.0	201.5	177.4	24.10	8.359		
4,900.0	4,877.4	4,908.4	4,867.2	12.3	14.7	-79.71	-213.1	-453.4	206.9	182.3	24.59	8.415		
5,000.0	4,977.4	5,014.9	4,973.7	12.4	14.8	-80.14	-214.2	-456.2	209.3	184.3	25.00	8.372		

CC - Min centre to center distance or convergent point, SF - min separation factor, ES - min ellipse separation

<b>Company:</b>	Synergy Resources	<b>Local Co-ordinate Reference:</b>	Well SRC Kelly Farms 22-4-3NHZ
<b>Project:</b>	SEC.4-T5N-R66W	<b>TVD Reference:</b>	WELL @ 4766.0ft (Original Well Elev)
<b>Reference Site:</b>	SRC Kelly Farms Pad Sec.4-T5N-R66W	<b>MD Reference:</b>	WELL @ 4766.0ft (Original Well Elev)
<b>Site Error:</b>	0.0ft	<b>North Reference:</b>	True
<b>Reference Well:</b>	SRC Kelly Farms 22-4-3NHZ	<b>Survey Calculation Method:</b>	Minimum Curvature
<b>Well Error:</b>	0.0ft	<b>Output errors are at</b>	2.00 sigma
<b>Reference Wellbore</b>	Wellbore #1	<b>Database:</b>	Landmark
<b>Reference Design:</b>	Plan #1 (5-20-13)	<b>Offset TVD Reference:</b>	Offset Datum

<b>Offset Design</b>												<b>Offset Site Error:</b>	0.0 ft
Survey Program: 0-MWD												<b>Offset Well Error:</b>	0.0 ft
Reference		Offset		Semi Major Axis			Distance						
Measured Depth (ft)	Vertical Depth (ft)	Measured Depth (ft)	Vertical Depth (ft)	Reference (ft)	Offset (ft)	Highside Toolface (°)	Offset Wellbore Centre +N/-S (ft)	+E/-W (ft)	Between Centres (ft)	Between Ellipses (ft)	Minimum Separation (ft)	Separation Factor	Warning
5,100.0	5,077.4	5,116.5	5,075.4	12.6	15.0	-80.16	-214.2	-456.3	209.4	184.0	25.36	8.258	
5,200.0	5,177.4	5,216.5	5,175.4	12.8	15.1	-80.16	-214.2	-456.3	209.4	183.7	25.72	8.142	
5,300.0	5,277.4	5,316.5	5,275.4	13.0	15.3	-80.16	-214.2	-456.3	209.4	183.3	26.08	8.029	
5,400.0	5,377.4	5,416.5	5,375.4	13.1	15.4	-80.16	-214.2	-456.3	209.4	182.9	26.44	7.918	
5,500.0	5,477.4	5,516.5	5,475.4	13.3	15.6	-80.16	-214.2	-456.3	209.4	182.6	26.81	7.809	
5,600.0	5,577.4	5,616.5	5,575.4	13.5	15.7	-80.16	-214.2	-456.3	209.4	182.2	27.18	7.702	
5,700.0	5,677.4	5,716.5	5,675.4	13.7	15.9	-80.16	-214.2	-456.3	209.4	181.8	27.56	7.598	
5,800.0	5,777.4	5,816.5	5,775.4	13.9	16.1	-80.16	-214.2	-456.3	209.4	181.4	27.93	7.496	
5,900.0	5,877.4	5,916.5	5,875.4	14.1	16.2	-80.16	-214.2	-456.3	209.4	181.1	28.31	7.396	
6,000.0	5,977.4	6,016.5	5,975.4	14.2	16.4	-80.16	-214.2	-456.3	209.4	180.7	28.69	7.299	
6,100.0	6,077.4	6,116.5	6,075.4	14.4	16.6	-80.16	-214.2	-456.3	209.4	180.3	29.07	7.203	
6,200.0	6,177.4	6,216.5	6,175.4	14.6	16.7	-80.16	-214.2	-456.3	209.4	179.9	29.45	7.109	
6,300.0	6,277.4	6,316.5	6,275.4	14.8	16.9	-80.16	-214.2	-456.3	209.4	179.5	29.84	7.018	
6,340.2	6,317.6	6,356.8	6,315.6	14.9	17.0	-168.04	-214.2	-456.3	209.8	180.7	29.16	7.196	
6,400.0	6,377.3	6,409.4	6,368.2	15.0	17.1	-168.06	-214.2	-456.7	211.1	181.8	29.30	7.206	
6,500.0	6,476.4	6,484.1	6,442.6	15.1	17.3	-168.44	-213.9	-463.1	232.2	203.2	29.05	7.995	
6,600.0	6,572.8	6,550.0	6,507.4	15.2	17.5	-168.87	-213.5	-475.2	275.5	247.2	28.35	9.720	
6,700.0	6,664.5	6,600.0	6,555.6	15.2	17.7	-168.82	-213.0	-488.3	337.8	310.5	27.26	12.389	
6,800.0	6,749.7	6,650.0	6,602.8	15.3	18.0	-168.43	-212.3	-504.7	414.6	388.7	25.89	16.017	
6,900.0	6,826.9	6,675.8	6,626.7	15.3	18.2	-166.34	-211.9	-514.5	502.0	477.6	24.45	20.532	
7,000.0	6,894.6	6,700.0	6,648.8	15.5	18.3	-161.76	-211.6	-524.4	596.5	573.0	23.49	25.397	
7,100.0	6,951.3	6,700.0	6,648.8	16.1	18.3	-140.55	-211.6	-524.4	694.7	667.4	27.31	25.442	
7,200.0	6,996.0	6,700.0	6,648.8	17.2	18.3	-47.57	-211.6	-524.4	794.4	766.8	27.66	28.721	
7,300.0	7,027.9	6,700.0	6,648.8	18.6	18.3	-16.80	-211.6	-524.4	893.5	875.4	18.10	49.371	
7,400.0	7,046.3	6,700.0	6,648.8	20.3	18.3	-9.57	-211.6	-524.4	990.4	974.1	16.33	60.665	

Reference Depths are relative to WELL @ 4766.0ft (Original Well Elev)Coordinates are relative to: SRC Kelly Farms 22-4-3NHZ  
Offset Depths are relative to Offset DatumCoordinate System is US State Plane 1983, Colorado Northern Zone  
Central Meridian is -105.500000 °Grid Convergence at Surface is: 0.46°



<b>Company:</b>	Synergy Resources	<b>Local Co-ordinate Reference:</b>	Well SRC Kelly Farms 22-4-3NHZ
<b>Project:</b>	SEC.4-T5N-R66W	<b>TVD Reference:</b>	WELL @ 4766.0ft (Original Well Elev)
<b>Reference Site:</b>	SRC Kelly Farms Pad Sec.4-T5N-R66W	<b>MD Reference:</b>	WELL @ 4766.0ft (Original Well Elev)
<b>Site Error:</b>	0.0ft	<b>North Reference:</b>	True
<b>Reference Well:</b>	SRC Kelly Farms 22-4-3NHZ	<b>Survey Calculation Method:</b>	Minimum Curvature
<b>Well Error:</b>	0.0ft	<b>Output errors are at</b>	2.00 sigma
<b>Reference Wellbore</b>	Wellbore #1	<b>Database:</b>	Landmark
<b>Reference Design:</b>	Plan #1 (5-20-13)	<b>Offset TVD Reference:</b>	Offset Datum

Reference Depths are relative to WELL @ 4766.0ft (Original Well Elev) Coordinates are relative to: SRC Kelly Farms 22-4-3NHZ  
Offset Depths are relative to Offset Datum Coordinate System is US State Plane 1983, Colorado Northern Zone  
Central Meridian is -105.500000 ° Grid Convergence at Surface is: 0.46°

