

# Synergy Resources

Well Name: **SRC Kelly Farms A-4-3NHZ**

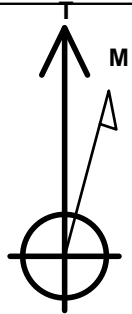
Surface Location: SRC Kelly Farms Pad Sec.4-T5N-R66W  
North American Datum 1983 , US State Plane 1983 , Colorado Northern Zone

Ground Elevation: 4754.0

+N/-S	+E/-W	Northing	Easting	Latitude	Longitude	Slot
0.0	0.0	1400935.56	3199094.28	40.431766	-104.784803	
Original Well Elev WELL @ 4767.0ft (Original Well Elev)						

## WELLBORE TARGET DETAILS

Name	TVD	+N/-S	+E/-W	Shape
SHL 2041'FNL & 2304'FWL, Sec. 4	1.0	0.0	0.0	Point
BHL 1520'FNL & 2137'FWL, Sec. 3	7055.0	522.6	5211.9	Point



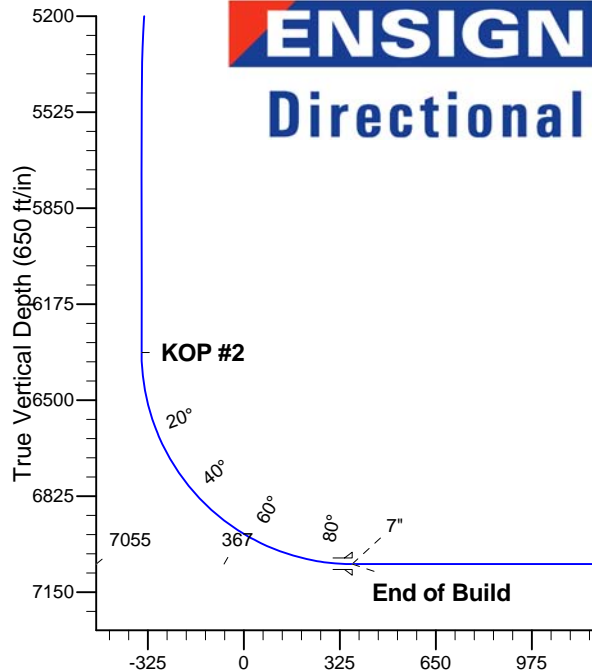
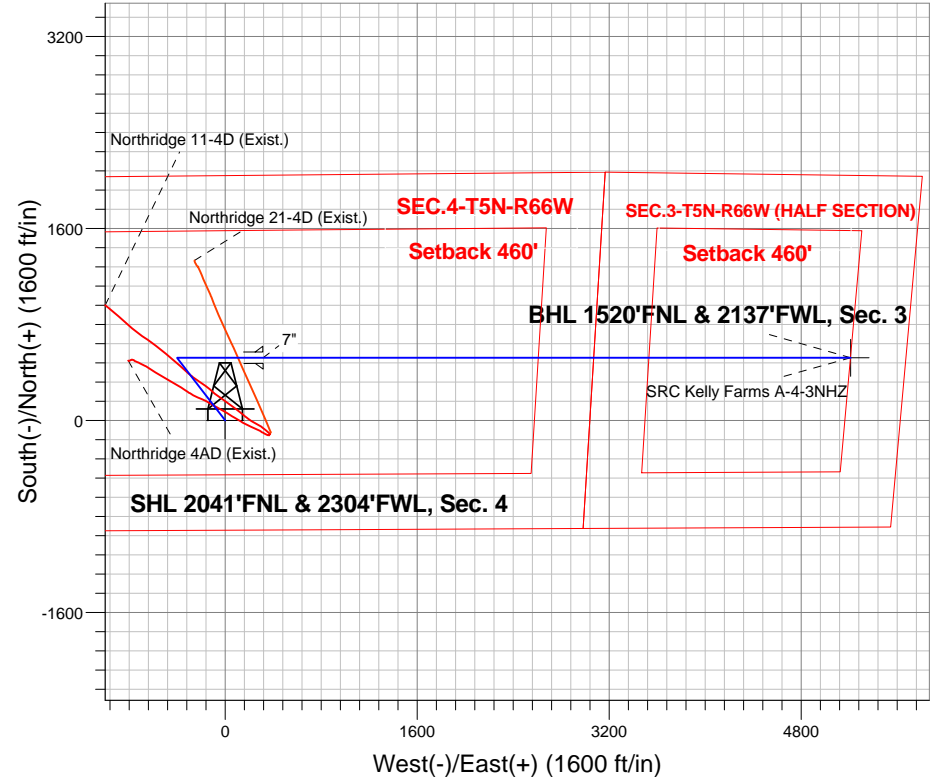
Azimuths to True North  
Magnetic North: 8.62°

Magnetic Field  
Strength: 52943.2srT  
Dip Angle: 67.01°  
Date: 5/20/2013  
Model: IGRF2010

SRC Kelly Farms Pad Sec.4-T5N-R66W  
SRC Kelly Farms A-4-3NHZ  
Plan #1 (5-20-13)  
12:20, May 29 2013

## ANNOTATIONS

TVD	MD	Annotation
400.0	400.0	KOP
6338.8	6383.3	KOP #2
7055.0	7508.3	End of Build



## SECTION DETAILS

Sec	MD	Inc	Azi	TVD	+N/-S	+E/-W	DLeg	TFace	VSec	Target
1	0.0	0.00	0.00	0.0	0.0	0.0	0.00	0.00	0.0	
2	400.0	0.00	0.00	400.0	0.0	0.0	0.00	0.00	0.0	
3	798.2	7.96	322.54	796.9	21.9	-16.8	2.00	322.54	-14.5	
4	5146.3	7.96	322.54	5103.1	500.1	-383.2	0.00	0.00	-331.4	
5	5544.5	0.00	0.00	5500.0	522.0	-400.0	2.00	180.00	-345.9	
6	6383.3	0.00	0.00	6338.8	522.0	-400.0	0.00	0.00	-345.9	
7	7508.3	90.00	89.99	7055.0	522.1	316.2	8.00	89.99	366.7	
8	12404.0	90.00	89.99	7055.0	522.6	5211.9	0.00	0.00	5238.1	BHL 1520'FNL & 2137'FWL, Sec. 3

BHL 1520'FNL & 2137'FWL, Sec. 3

Vertical Section at 84.27° (650 ft/in)



## **Synergy Resources**

**SEC.4-T5N-R66W**

**SRC Kelly Farms Pad Sec.4-T5N-R66W**

**SRC Kelly Farms A-4-3NHZ**

**Wellbore #1**

**Plan: Plan #1 (5-20-13)**

## **Standard Planning Report**

**29 May, 2013**

<b>Database:</b>	Landmark	<b>Local Co-ordinate Reference:</b>	Well SRC Kelly Farms A-4-3NHZ
<b>Company:</b>	Synergy Resources	<b>TVD Reference:</b>	WELL @ 4767.0ft (Original Well Elev)
<b>Project:</b>	SEC.4-T5N-R66W	<b>MD Reference:</b>	WELL @ 4767.0ft (Original Well Elev)
<b>Site:</b>	SRC Kelly Farms Pad Sec.4-T5N-R66W	<b>North Reference:</b>	True
<b>Well:</b>	SRC Kelly Farms A-4-3NHZ	<b>Survey Calculation Method:</b>	Minimum Curvature
<b>Wellbore:</b>	Wellbore #1		
<b>Design:</b>	Plan #1 (5-20-13)		

<b>Project</b>	SEC.4-T5N-R66W, Weld County, Colorado		
<b>Map System:</b>	US State Plane 1983	<b>System Datum:</b>	Mean Sea Level
<b>Geo Datum:</b>	North American Datum 1983		Using Well Reference Point
<b>Map Zone:</b>	Colorado Northern Zone		Using geodetic scale factor

Site						SRC Kelly Farms Pad Sec.4-T5N-R66W											
Site Position:						Northing:			1,400,891.57 ft			Latitude:			40.431645		
From:			Lat/Long			Easting:			3,199,103.54 ft			Longitude:			-104.784771		
Position Uncertainty:			0.0 ft			Slot Radius:			"			Grid Convergence:			0.46 °		

Well	SRC Kelly Farms A-4-3NHZ					
Well Position	+N/-S	44.1 ft	Northing:	1,400,935.56 ft	Latitude:	40.431766
	+E/-W	-8.9 ft	Easting:	3,199,094.28 ft	Longitude:	-104.784803
Position Uncertainty		0.0 ft	Wellhead Elevation:	ft	Ground Level:	4,754.0 ft

<b>Wellbore</b>	Wellbore #1				
<b>Magnetics</b>	<b>Model Name</b>	<b>Sample Date</b>	<b>Declination (°)</b>	<b>Dip Angle (°)</b>	<b>Field Strength (nT)</b>
	IGRF2010	5/20/2013	8.62	67.01	52,943

<b>Design</b>	Plan #1 (5-20-13)			
<b>Audit Notes:</b>				
<b>Version:</b>	<b>Phase:</b>	PROTOTYPE	<b>Tie On Depth:</b>	0.0
<b>Vertical Section:</b>	<b>Depth From (TVD) (ft)</b>	<b>+N/-S (ft)</b>	<b>+E/-W (ft)</b>	<b>Direction (°)</b>
	0.0	0.0	0.0	84.27

<b>Plan Sections</b>										
Measured Depth (ft)	Inclination (°)	Azimuth (°)	Vertical Depth (ft)	+N/-S (ft)	+E/-W (ft)	Dogleg Rate (°/100ft)	Build Rate (°/100ft)	Turn Rate (°/100ft)	TFO (°)	Target
0.0	0.00	0.00	0.0	0.0	0.0	0.00	0.00	0.00	0.00	
400.0	0.00	0.00	400.0	0.0	0.0	0.00	0.00	0.00	0.00	
798.2	7.96	322.54	796.9	21.9	-16.8	2.00	2.00	0.00	322.54	
5,146.3	7.96	322.54	5,103.1	500.1	-383.2	0.00	0.00	0.00	0.00	
5,544.5	0.00	0.00	5,500.0	522.0	-400.0	2.00	-2.00	0.00	180.00	
6,383.3	0.00	0.00	6,338.8	522.0	-400.0	0.00	0.00	0.00	0.00	
7,508.3	90.00	89.99	7,055.0	522.1	316.2	8.00	8.00	0.00	89.99	
12,404.0	90.00	89.99	7,055.0	522.6	5,211.9	0.00	0.00	0.00	0.00	BHL 1520'FNL & 21

<b>Database:</b>	Landmark	<b>Local Co-ordinate Reference:</b>	Well SRC Kelly Farms A-4-3NHZ
<b>Company:</b>	Synergy Resources	<b>TVD Reference:</b>	WELL @ 4767.0ft (Original Well Elev)
<b>Project:</b>	SEC.4-T5N-R66W	<b>MD Reference:</b>	WELL @ 4767.0ft (Original Well Elev)
<b>Site:</b>	SRC Kelly Farms Pad Sec.4-T5N-R66W	<b>North Reference:</b>	True
<b>Well:</b>	SRC Kelly Farms A-4-3NHZ	<b>Survey Calculation Method:</b>	Minimum Curvature
<b>Wellbore:</b>	Wellbore #1		
<b>Design:</b>	Plan #1 (5-20-13)		

Planned Survey									
Measured Depth (ft)	Inclination (°)	Azimuth (°)	Vertical Depth (ft)	+N/-S (ft)	+E/-W (ft)	Vertical Section (ft)	Dogleg Rate (°/100ft)	Build Rate (°/100ft)	Turn Rate (°/100ft)
0.0	0.00	0.00	0.0	0.0	0.0	0.0	0.00	0.00	0.00
1.0	0.00	0.00	1.0	0.0	0.0	0.0	0.00	0.00	0.00
<b>SHL 2041'FNL &amp; 2304'FWL, Sec. 4</b>									
100.0	0.00	0.00	100.0	0.0	0.0	0.0	0.00	0.00	0.00
200.0	0.00	0.00	200.0	0.0	0.0	0.0	0.00	0.00	0.00
300.0	0.00	0.00	300.0	0.0	0.0	0.0	0.00	0.00	0.00
400.0	0.00	0.00	400.0	0.0	0.0	0.0	0.00	0.00	0.00
<b>KOP</b>									
500.0	2.00	322.54	500.0	1.4	-1.1	-0.9	2.00	2.00	0.00
600.0	4.00	322.54	599.8	5.5	-4.2	-3.7	2.00	2.00	0.00
700.0	6.00	322.54	699.5	12.5	-9.5	-8.3	2.00	2.00	0.00
798.2	7.96	322.54	796.9	21.9	-16.8	-14.5	2.00	2.00	0.00
800.0	7.96	322.54	798.7	22.1	-17.0	-14.7	0.00	0.00	0.00
900.0	7.96	322.54	897.7	33.1	-25.4	-22.0	0.00	0.00	0.00
1,000.0	7.96	322.54	996.8	44.1	-33.8	-29.2	0.00	0.00	0.00
1,100.0	7.96	322.54	1,095.8	55.1	-42.2	-36.5	0.00	0.00	0.00
1,200.0	7.96	322.54	1,194.8	66.1	-50.7	-43.8	0.00	0.00	0.00
1,300.0	7.96	322.54	1,293.9	77.1	-59.1	-51.1	0.00	0.00	0.00
1,400.0	7.96	322.54	1,392.9	88.1	-67.5	-58.4	0.00	0.00	0.00
1,500.0	7.96	322.54	1,492.0	99.1	-75.9	-65.7	0.00	0.00	0.00
1,600.0	7.96	322.54	1,591.0	110.1	-84.4	-73.0	0.00	0.00	0.00
1,700.0	7.96	322.54	1,690.0	121.1	-92.8	-80.2	0.00	0.00	0.00
1,800.0	7.96	322.54	1,789.1	132.1	-101.2	-87.5	0.00	0.00	0.00
1,900.0	7.96	322.54	1,888.1	143.1	-109.6	-94.8	0.00	0.00	0.00
2,000.0	7.96	322.54	1,987.1	154.1	-118.1	-102.1	0.00	0.00	0.00
2,100.0	7.96	322.54	2,086.2	165.1	-126.5	-109.4	0.00	0.00	0.00
2,200.0	7.96	322.54	2,185.2	176.1	-134.9	-116.7	0.00	0.00	0.00
2,300.0	7.96	322.54	2,284.2	187.1	-143.4	-124.0	0.00	0.00	0.00
2,400.0	7.96	322.54	2,383.3	198.1	-151.8	-131.3	0.00	0.00	0.00
2,500.0	7.96	322.54	2,482.3	209.1	-160.2	-138.5	0.00	0.00	0.00
2,600.0	7.96	322.54	2,581.3	220.1	-168.6	-145.8	0.00	0.00	0.00
2,700.0	7.96	322.54	2,680.4	231.1	-177.1	-153.1	0.00	0.00	0.00
2,800.0	7.96	322.54	2,779.4	242.1	-185.5	-160.4	0.00	0.00	0.00
2,900.0	7.96	322.54	2,878.5	253.1	-193.9	-167.7	0.00	0.00	0.00
3,000.0	7.96	322.54	2,977.5	264.1	-202.3	-175.0	0.00	0.00	0.00
3,100.0	7.96	322.54	3,076.5	275.0	-210.8	-182.3	0.00	0.00	0.00
3,200.0	7.96	322.54	3,175.6	286.0	-219.2	-189.6	0.00	0.00	0.00
3,300.0	7.96	322.54	3,274.6	297.0	-227.6	-196.8	0.00	0.00	0.00
3,400.0	7.96	322.54	3,373.6	308.0	-236.0	-204.1	0.00	0.00	0.00
3,500.0	7.96	322.54	3,472.7	319.0	-244.5	-211.4	0.00	0.00	0.00
3,600.0	7.96	322.54	3,571.7	330.0	-252.9	-218.7	0.00	0.00	0.00
3,700.0	7.96	322.54	3,670.7	341.0	-261.3	-226.0	0.00	0.00	0.00
3,800.0	7.96	322.54	3,769.8	352.0	-269.8	-233.3	0.00	0.00	0.00
3,900.0	7.96	322.54	3,868.8	363.0	-278.2	-240.6	0.00	0.00	0.00
4,000.0	7.96	322.54	3,967.8	374.0	-286.6	-247.9	0.00	0.00	0.00
4,100.0	7.96	322.54	4,066.9	385.0	-295.0	-255.1	0.00	0.00	0.00
4,200.0	7.96	322.54	4,165.9	396.0	-303.5	-262.4	0.00	0.00	0.00
4,300.0	7.96	322.54	4,265.0	407.0	-311.9	-269.7	0.00	0.00	0.00
4,400.0	7.96	322.54	4,364.0	418.0	-320.3	-277.0	0.00	0.00	0.00
4,500.0	7.96	322.54	4,463.0	429.0	-328.7	-284.3	0.00	0.00	0.00
4,600.0	7.96	322.54	4,562.1	440.0	-337.2	-291.6	0.00	0.00	0.00
4,700.0	7.96	322.54	4,661.1	451.0	-345.6	-298.9	0.00	0.00	0.00
4,800.0	7.96	322.54	4,760.1	462.0	-354.0	-306.2	0.00	0.00	0.00
4,900.0	7.96	322.54	4,859.2	473.0	-362.4	-313.4	0.00	0.00	0.00

**Database:** Landmark  
**Company:** Synergy Resources  
**Project:** SEC.4-T5N-R66W  
**Site:** SRC Kelly Farms Pad Sec.4-T5N-R66W  
**Well:** SRC Kelly Farms A-4-3NHZ  
**Wellbore:** Wellbore #1  
**Design:** Plan #1 (5-20-13)

**Local Co-ordinate Reference:** Well SRC Kelly Farms A-4-3NHZ  
**TVD Reference:** WELL @ 4767.0ft (Original Well Elev)  
**MD Reference:** WELL @ 4767.0ft (Original Well Elev)  
**North Reference:** True  
**Survey Calculation Method:** Minimum Curvature

Planned Survey									
Measured Depth (ft)	Inclination (°)	Azimuth (°)	Vertical Depth (ft)	+N/-S (ft)	+E/-W (ft)	Vertical Section (ft)	Dogleg Rate (°/100ft)	Build Rate (°/100ft)	Turn Rate (°/100ft)
5,000.0	7.96	322.54	4,958.2	484.0	-370.9	-320.7	0.00	0.00	0.00
5,100.0	7.96	322.54	5,057.2	495.0	-379.3	-328.0	0.00	0.00	0.00
5,146.3	7.96	322.54	5,103.1	500.1	-383.2	-331.4	0.00	0.00	0.00
5,200.0	6.89	322.54	5,156.3	505.6	-387.4	-335.0	2.00	-2.00	0.00
5,300.0	4.89	322.54	5,255.8	513.7	-393.7	-340.4	2.00	-2.00	0.00
5,400.0	2.89	322.54	5,355.6	519.1	-397.8	-344.0	2.00	-2.00	0.00
5,500.0	0.89	322.54	5,455.5	521.7	-399.8	-345.7	2.00	-2.00	0.00
5,544.5	0.00	0.00	5,500.0	522.0	-400.0	-345.9	2.00	-2.00	0.00
5,600.0	0.00	0.00	5,555.5	522.0	-400.0	-345.9	0.00	0.00	0.00
5,700.0	0.00	0.00	5,655.5	522.0	-400.0	-345.9	0.00	0.00	0.00
5,800.0	0.00	0.00	5,755.5	522.0	-400.0	-345.9	0.00	0.00	0.00
5,900.0	0.00	0.00	5,855.5	522.0	-400.0	-345.9	0.00	0.00	0.00
6,000.0	0.00	0.00	5,955.5	522.0	-400.0	-345.9	0.00	0.00	0.00
6,100.0	0.00	0.00	6,055.5	522.0	-400.0	-345.9	0.00	0.00	0.00
6,200.0	0.00	0.00	6,155.5	522.0	-400.0	-345.9	0.00	0.00	0.00
6,300.0	0.00	0.00	6,255.5	522.0	-400.0	-345.9	0.00	0.00	0.00
6,383.3	0.00	0.00	6,338.8	522.0	-400.0	-345.9	0.00	0.00	0.00
KOP #2									
6,400.0	1.34	89.99	6,355.5	522.0	-399.8	-345.7	8.00	8.00	0.00
6,500.0	9.34	89.99	6,455.0	522.0	-390.5	-336.5	8.00	8.00	0.00
6,600.0	17.34	89.99	6,552.2	522.0	-367.5	-313.5	8.00	8.00	0.00
6,700.0	25.34	89.99	6,645.3	522.0	-331.1	-277.4	8.00	8.00	0.00
6,800.0	33.34	89.99	6,732.4	522.0	-282.2	-228.7	8.00	8.00	0.00
6,900.0	41.34	89.99	6,811.8	522.0	-221.6	-168.4	8.00	8.00	0.00
7,000.0	49.34	89.99	6,882.1	522.0	-150.5	-97.7	8.00	8.00	0.00
7,100.0	57.34	89.99	6,941.7	522.0	-70.3	-17.9	8.00	8.00	0.00
7,200.0	65.34	89.99	6,989.7	522.0	17.3	69.3	8.00	8.00	0.00
7,300.0	73.34	89.99	7,024.9	522.1	110.8	162.4	8.00	8.00	0.00
7,400.0	81.34	89.99	7,046.8	522.1	208.3	259.4	8.00	8.00	0.00
7,500.0	89.34	89.99	7,055.0	522.1	307.9	358.5	8.00	8.00	0.00
7,508.3	90.00	89.99	7,055.0	522.1	316.2	366.7	7.99	7.99	0.00
End of Build - 7"									
7,600.0	90.00	89.99	7,055.0	522.1	407.9	458.0	0.00	0.00	0.00
7,700.0	90.00	89.99	7,055.0	522.1	507.9	557.5	0.00	0.00	0.00
7,800.0	90.00	89.99	7,055.0	522.1	607.9	657.0	0.00	0.00	0.00
7,900.0	90.00	89.99	7,055.0	522.1	707.9	756.5	0.00	0.00	0.00
8,000.0	90.00	89.99	7,055.0	522.1	807.9	856.0	0.00	0.00	0.00
8,100.0	90.00	89.99	7,055.0	522.1	907.9	955.5	0.00	0.00	0.00
8,200.0	90.00	89.99	7,055.0	522.2	1,007.9	1,055.0	0.00	0.00	0.00
8,300.0	90.00	89.99	7,055.0	522.2	1,107.9	1,154.5	0.00	0.00	0.00
8,400.0	90.00	89.99	7,055.0	522.2	1,207.9	1,254.0	0.00	0.00	0.00
8,500.0	90.00	89.99	7,055.0	522.2	1,307.9	1,353.5	0.00	0.00	0.00
8,600.0	90.00	89.99	7,055.0	522.2	1,407.9	1,453.0	0.00	0.00	0.00
8,700.0	90.00	89.99	7,055.0	522.2	1,507.9	1,552.5	0.00	0.00	0.00
8,800.0	90.00	89.99	7,055.0	522.2	1,607.9	1,652.0	0.00	0.00	0.00
8,900.0	90.00	89.99	7,055.0	522.2	1,707.9	1,751.5	0.00	0.00	0.00
9,000.0	90.00	89.99	7,055.0	522.2	1,807.9	1,851.0	0.00	0.00	0.00
9,100.0	90.00	89.99	7,055.0	522.3	1,907.9	1,950.5	0.00	0.00	0.00
9,200.0	90.00	89.99	7,055.0	522.3	2,007.9	2,050.0	0.00	0.00	0.00
9,300.0	90.00	89.99	7,055.0	522.3	2,107.9	2,149.5	0.00	0.00	0.00
9,400.0	90.00	89.99	7,055.0	522.3	2,207.9	2,249.0	0.00	0.00	0.00
9,500.0	90.00	89.99	7,055.0	522.3	2,307.9	2,348.5	0.00	0.00	0.00
9,600.0	90.00	89.99	7,055.0	522.3	2,407.9	2,448.0	0.00	0.00	0.00
9,700.0	90.00	89.99	7,055.0	522.3	2,507.9	2,547.5	0.00	0.00	0.00

<b>Database:</b>	Landmark	<b>Local Co-ordinate Reference:</b>	Well SRC Kelly Farms A-4-3NHZ
<b>Company:</b>	Synergy Resources	<b>TVD Reference:</b>	WELL @ 4767.0ft (Original Well Elev)
<b>Project:</b>	SEC.4-T5N-R66W	<b>MD Reference:</b>	WELL @ 4767.0ft (Original Well Elev)
<b>Site:</b>	SRC Kelly Farms Pad Sec.4-T5N-R66W	<b>North Reference:</b>	True
<b>Well:</b>	SRC Kelly Farms A-4-3NHZ	<b>Survey Calculation Method:</b>	Minimum Curvature
<b>Wellbore:</b>	Wellbore #1		
<b>Design:</b>	Plan #1 (5-20-13)		

Planned Survey										
Measured Depth (ft)	Inclination (°)	Azimuth (°)	Vertical Depth (ft)	+N/-S (ft)	+E/-W (ft)	Vertical Section (ft)	Dogleg Rate (°/100ft)	Build Rate (°/100ft)	Turn Rate (°/100ft)	
9,800.0	90.00	89.99	7,055.0	522.3	2,607.9	2,647.0	0.00	0.00	0.00	
9,900.0	90.00	89.99	7,055.0	522.3	2,707.9	2,746.5	0.00	0.00	0.00	
10,000.0	90.00	89.99	7,055.0	522.4	2,807.9	2,846.0	0.00	0.00	0.00	
10,100.0	90.00	89.99	7,055.0	522.4	2,907.9	2,945.5	0.00	0.00	0.00	
10,200.0	90.00	89.99	7,055.0	522.4	3,007.9	3,045.0	0.00	0.00	0.00	
10,300.0	90.00	89.99	7,055.0	522.4	3,107.9	3,144.5	0.00	0.00	0.00	
10,400.0	90.00	89.99	7,055.0	522.4	3,207.9	3,244.0	0.00	0.00	0.00	
10,500.0	90.00	89.99	7,055.0	522.4	3,307.9	3,343.5	0.00	0.00	0.00	
10,600.0	90.00	89.99	7,055.0	522.4	3,407.9	3,443.0	0.00	0.00	0.00	
10,700.0	90.00	89.99	7,055.0	522.4	3,507.9	3,542.5	0.00	0.00	0.00	
10,800.0	90.00	89.99	7,055.0	522.4	3,607.9	3,642.0	0.00	0.00	0.00	
10,900.0	90.00	89.99	7,055.0	522.5	3,707.9	3,741.5	0.00	0.00	0.00	
11,000.0	90.00	89.99	7,055.0	522.5	3,807.9	3,841.0	0.00	0.00	0.00	
11,100.0	90.00	89.99	7,055.0	522.5	3,907.9	3,940.5	0.00	0.00	0.00	
11,200.0	90.00	89.99	7,055.0	522.5	4,007.9	4,040.0	0.00	0.00	0.00	
11,300.0	90.00	89.99	7,055.0	522.5	4,107.9	4,139.5	0.00	0.00	0.00	
11,400.0	90.00	89.99	7,055.0	522.5	4,207.9	4,239.0	0.00	0.00	0.00	
11,500.0	90.00	89.99	7,055.0	522.5	4,307.9	4,338.5	0.00	0.00	0.00	
11,600.0	90.00	89.99	7,055.0	522.5	4,407.9	4,438.0	0.00	0.00	0.00	
11,700.0	90.00	89.99	7,055.0	522.5	4,507.9	4,537.5	0.00	0.00	0.00	
11,800.0	90.00	89.99	7,055.0	522.6	4,607.9	4,637.1	0.00	0.00	0.00	
11,900.0	90.00	89.99	7,055.0	522.6	4,707.9	4,736.6	0.00	0.00	0.00	
12,000.0	90.00	89.99	7,055.0	522.6	4,807.9	4,836.1	0.00	0.00	0.00	
12,100.0	90.00	89.99	7,055.0	522.6	4,907.9	4,935.6	0.00	0.00	0.00	
12,200.0	90.00	89.99	7,055.0	522.6	5,007.9	5,035.1	0.00	0.00	0.00	
12,300.0	90.00	89.99	7,055.0	522.6	5,107.9	5,134.6	0.00	0.00	0.00	
12,400.0	90.00	89.99	7,055.0	522.6	5,207.9	5,234.1	0.00	0.00	0.00	
12,404.0	90.00	89.99	7,055.0	522.6	5,211.9	5,238.1	0.00	0.00	0.00	
BHL 1520'FNL & 2137'FWL, Sec. 3										

Targets										
Target Name	Dip Angle (°)	Dip Dir. (°)	TVD (ft)	+N/-S (ft)	+E/-W (ft)	Northing (ft)	Easting (ft)	Latitude	Longitude	
- hit/miss target										
- Shape										
SHL 2041'FNL & 2304	0.00	0.00	1.0	0.0	0.0	1,400,935.58	3,199,094.28	40.431766	-104.784803	
- plan hits target center										
- Point										
BHL 1520'FNL & 2137	0.00	0.00	7,055.0	522.6	5,211.9	1,401,500.19	3,204,301.61	40.433199	-104.766081	
- plan hits target center										
- Point										

Casing Points						
Measured Depth (ft)	Vertical Depth (ft)	Name	Casing Diameter (")	Hole Diameter (")		
7,508.3	7,055.0	7"	7	7-1/2		

<b>Database:</b>	Landmark	<b>Local Co-ordinate Reference:</b>	Well SRC Kelly Farms A-4-3NHZ
<b>Company:</b>	Synergy Resources	<b>TVD Reference:</b>	WELL @ 4767.0ft (Original Well Elev)
<b>Project:</b>	SEC.4-T5N-R66W	<b>MD Reference:</b>	WELL @ 4767.0ft (Original Well Elev)
<b>Site:</b>	SRC Kelly Farms Pad Sec.4-T5N-R66W	<b>North Reference:</b>	True
<b>Well:</b>	SRC Kelly Farms A-4-3NHZ	<b>Survey Calculation Method:</b>	Minimum Curvature
<b>Wellbore:</b>	Wellbore #1		
<b>Design:</b>	Plan #1 (5-20-13)		

Plan Annotations				
Measured Depth (ft)	Vertical Depth (ft)	Local Coordinates		Comment
		+N/-S (ft)	+E/-W (ft)	
400.0	400.0	0.0	0.0	KOP
6,383.3	6,338.8	522.0	-400.0	KOP #2
7,508.3	7,055.0	522.1	316.2	End of Build



## **Synergy Resources**

**SEC.4-T5N-R66W**

**SRC Kelly Farms Pad Sec.4-T5N-R66W**

**SRC Kelly Farms A-4-3NHZ**

**Wellbore #1**

**Plan #1 (5-20-13)**

## **Anticollision Report**

**29 May, 2013**



<b>Company:</b>	Synergy Resources	<b>Local Co-ordinate Reference:</b>	Well SRC Kelly Farms A-4-3NHZ
<b>Project:</b>	SEC.4-T5N-R66W	<b>TVD Reference:</b>	WELL @ 4767.0ft (Original Well Elev)
<b>Reference Site:</b>	SRC Kelly Farms Pad Sec.4-T5N-R66W	<b>MD Reference:</b>	WELL @ 4767.0ft (Original Well Elev)
<b>Site Error:</b>	0.0ft	<b>North Reference:</b>	True
<b>Reference Well:</b>	SRC Kelly Farms A-4-3NHZ	<b>Survey Calculation Method:</b>	Minimum Curvature
<b>Well Error:</b>	0.0ft	<b>Output errors are at</b>	2.00 sigma
<b>Reference Wellbore</b>	Wellbore #1	<b>Database:</b>	Landmark
<b>Reference Design:</b>	Plan #1 (5-20-13)	<b>Offset TVD Reference:</b>	Offset Datum

<b>Reference</b>	Plan #1 (5-20-13)		
<b>Filter type:</b>	NO GLOBAL FILTER: Using user defined selection & filtering criteria		
<b>Interpolation Method:</b>	MD Interval 100.0ft	<b>Error Model:</b>	ISCWSA
<b>Depth Range:</b>	Unlimited	<b>Scan Method:</b>	Closest Approach 3D
<b>Results Limited by:</b>	Maximum center-center distance of 1,000.0ft	<b>Error Surface:</b>	Elliptical Conic
<b>Warning Levels Evaluated at:</b>	2.00 Sigma		

<b>Survey Tool Program</b>	<b>Date</b> 5/29/2013			
<b>From (ft)</b>	<b>To (ft)</b>	<b>Survey (Wellbore)</b>	<b>Tool Name</b>	<b>Description</b>
0.0	12,404.0	Plan #1 (5-20-13) (Wellbore #1)	MWD	MWD - Standard

Summary						
Site Name	Reference Measured Depth (ft)	Offset Measured Depth (ft)	Distance Between Centres (ft)	Distance Between Ellipses (ft)	Separation Factor	Warning
Northridge Pad Sec.4-T5N-R66W						
Northridge 11-4D (Exist.) - Wellbore #1 - Wellbore #1	2,148.1	2,223.9	69.7	51.6	3.843	CC, ES, SF
Northridge 21-4D (Exist.) - Wellbore #1 - Wellbore #1	1,672.7	1,713.9	350.2	338.7	30.640	CC
Northridge 21-4D (Exist.) - Wellbore #1 - Wellbore #1	1,700.0	1,740.5	350.2	338.5	29.984	ES
Northridge 21-4D (Exist.) - Wellbore #1 - Wellbore #1	3,800.0	3,813.7	506.0	478.0	18.088	SF
Northridge 4AD (Exist.) - Wellbore #1 - Wellbore #1	3,876.1	3,950.1	123.9	95.8	4.412	CC
Northridge 4AD (Exist.) - Wellbore #1 - Wellbore #1	3,900.0	3,973.6	124.0	95.6	4.359	ES
Northridge 4AD (Exist.) - Wellbore #1 - Wellbore #1	4,000.0	4,070.3	127.1	97.4	4.280	SF
SRC Kelly Farms Pad Sec.4-T5N-R66W						
SRC Kelly Farms 21-4-3NHZ - Wellbore #1 - Plan #1 (5-	317.8	315.8	40.0	38.8	33.307	CC
SRC Kelly Farms 21-4-3NHZ - Wellbore #1 - Plan #1 (5-	400.0	397.8	40.2	38.7	25.549	ES
SRC Kelly Farms 21-4-3NHZ - Wellbore #1 - Plan #1 (5-	12,404.0	12,533.7	988.4	684.6	3.254	SF
SRC Kelly Farms 21-4-3NHZ #2 - Wellbore #1 - Plan #1	400.0	399.0	67.6	66.1	43.051	CC, ES
SRC Kelly Farms 21-4-3NHZ #2 - Wellbore #1 - Plan #1	12,404.0	12,531.9	659.1	354.6	2.165	SF
SRC Kelly Farms 22-4-3CHZ - Wellbore #1 - Plan #1 (5-	400.0	399.0	45.0	43.4	28.622	CC, ES
SRC Kelly Farms 22-4-3CHZ - Wellbore #1 - Plan #1 (5-	12,400.0	12,515.0	370.9	97.1	1.354	Level 3, SF
SRC Kelly Farms 22-4-3NHZ #2 - Wellbore #1 - Plan #1	400.0	400.0	112.6	111.0	71.569	CC, ES
SRC Kelly Farms 22-4-3NHZ #2 - Wellbore #1 - Plan #1	12,404.0	12,070.6	992.8	695.6	3.340	SF
SRC Kelly Farms A-4-3CHZ - Wellbore #1 - Plan #1 (5-2	400.0	400.0	22.7	21.1	14.400	CC
SRC Kelly Farms A-4-3CHZ - Wellbore #1 - Plan #1 (5-2	1,505.2	1,512.4	23.5	15.6	2.964	ES
SRC Kelly Farms A-4-3CHZ - Wellbore #1 - Plan #1 (5-2	12,404.0	12,641.1	370.6	98.9	1.364	Level 3, SF
SRC Northridge C-4-5CHZ - Wellbore #1 - Plan #1 (5-21	400.0	398.0	60.2	58.6	38.349	CC, ES
SRC Northridge C-4-5CHZ - Wellbore #1 - Plan #1 (5-21	7,134.8	7,193.3	141.3	106.5	4.064	SF
SRC Northridge C-4-5NHZ - Wellbore #1 - Plan #1 (5-21	400.0	398.0	78.5	77.0	50.052	CC, ES
SRC Northridge C-4-5NHZ - Wellbore #1 - Plan #1 (5-21	7,127.4	7,148.0	188.7	154.0	5.445	SF

<b>Offset Design</b>	Northridge Pad Sec.4-T5N-R66W - Northridge 11-4D (Exist.) - Wellbore #1 - Wellbore #1											<b>Offset Site Error:</b>	0.0ft
<b>Survey Program:</b>	147-MWD											<b>Offset Well Error:</b>	0.0ft
Reference	Offset	Semi Major Axis		Distance									
Measured Depth (ft)	Vertical Depth (ft)	Measured Depth (ft)	Vertical Depth (ft)	Reference (ft)	Offset (ft)	Highside Toolface (°)	Offset Wellbore Centre +N/-S (ft)	+E/-W (ft)	Between Centres (ft)	Between Ellipses (ft)	Minimum Separation (ft)	Separation Factor	Warning
0.0	0.0	0.0	0.0	0.0	0.0	106.78	-112.6	373.3	390.2				
100.0	100.0	80.3	80.2	0.1	0.1	106.82	-113.0	373.8	390.6	390.4	0.20	1,906.939	
200.0	200.0	180.9	180.9	0.3	0.2	106.96	-114.5	375.5	392.6	392.0	0.57	683.801	
300.0	300.0	299.5	299.5	0.6	0.5	106.96	-114.2	374.3	391.5	390.5	1.04	375.014	

CC - Min centre to center distance or convergent point, SF - min separation factor, ES - min ellipse separation

<b>Company:</b>	Synergy Resources	<b>Local Co-ordinate Reference:</b>	Well SRC Kelly Farms A-4-3NHZ
<b>Project:</b>	SEC.4-T5N-R66W	<b>TVD Reference:</b>	WELL @ 4767.0ft (Original Well Elev)
<b>Reference Site:</b>	SRC Kelly Farms Pad Sec.4-T5N-R66W	<b>MD Reference:</b>	WELL @ 4767.0ft (Original Well Elev)
<b>Site Error:</b>	0.0ft	<b>North Reference:</b>	True
<b>Reference Well:</b>	SRC Kelly Farms A-4-3NHZ	<b>Survey Calculation Method:</b>	Minimum Curvature
<b>Well Error:</b>	0.0ft	<b>Output errors are at</b>	2.00 sigma
<b>Reference Wellbore</b>	Wellbore #1	<b>Database:</b>	Landmark
<b>Reference Design:</b>	Plan #1 (5-20-13)	<b>Offset TVD Reference:</b>	Offset Datum

Offset Design Northridge Pad Sec.4-T5N-R66W - Northridge 11-4D (Exist.) - Wellbore #1 - Wellbore #1													Offset Site Error:	0.0 ft
Survey Program: 147-MWD													Offset Well Error:	0.0 ft
Reference		Offset		Semi Major Axis			Distance							Warning
Measured Depth (ft)	Vertical Depth (ft)	Measured Depth (ft)	Vertical Depth (ft)	Reference (ft)	Offset (ft)	Highside Toolface (°)	Offset Wellbore Centre +N/-S (ft)	+E/-W (ft)	Between Centres (ft)	Between Ellipses (ft)	Minimum Separation (ft)	Separation Factor		
400.0	400.0	413.7	413.4	0.8	0.7	106.54	-109.6	369.2	386.1	384.6	1.53	252.540		
500.0	500.0	534.7	533.6	1.0	1.0	143.31	-100.1	359.5	377.6	375.6	2.03	185.651		
600.0	599.8	648.1	645.6	1.2	1.4	142.71	-87.8	346.0	367.3	364.8	2.54	144.372		
700.0	699.5	749.1	744.9	1.5	1.8	142.51	-76.2	331.4	357.3	354.2	3.03	117.935		
800.0	798.7	850.6	844.7	1.7	2.1	142.62	-64.9	317.4	350.6	347.1	3.52	99.620		
900.0	897.7	963.9	955.5	2.0	2.6	142.54	-49.7	299.2	342.6	338.5	4.09	83.818		
1,000.0	996.8	1,081.3	1,069.4	2.4	3.2	143.03	-35.8	274.3	329.9	325.2	4.68	70.534		
1,100.0	1,095.8	1,190.2	1,173.7	2.7	3.8	143.45	-21.2	247.0	313.0	307.7	5.27	59.414		
1,200.0	1,194.8	1,299.2	1,276.8	3.0	4.5	143.23	-2.4	216.7	292.2	286.3	5.90	49.493		
1,300.0	1,293.9	1,401.8	1,372.7	3.3	5.2	142.48	18.1	186.6	269.2	262.6	6.56	41.008		
1,400.0	1,392.9	1,502.7	1,465.6	3.6	5.9	140.60	42.7	156.2	244.2	236.9	7.31	33.388		
1,500.0	1,492.0	1,603.0	1,557.7	4.0	6.7	138.16	67.7	124.9	218.4	210.2	8.15	26.805		
1,600.0	1,591.0	1,701.9	1,647.4	4.3	7.6	134.88	93.3	92.1	190.8	181.7	9.11	20.948		
1,700.0	1,690.0	1,798.9	1,735.0	4.6	8.4	130.48	118.6	59.2	163.0	152.8	10.22	15.948		
1,800.0	1,789.1	1,895.7	1,822.4	5.0	9.2	125.06	142.2	25.0	135.2	123.7	11.52	11.736		
1,900.0	1,888.1	1,990.1	1,907.1	5.3	10.0	116.49	166.4	-8.8	108.7	95.4	13.22	8.217		
2,000.0	1,987.1	2,084.8	1,992.1	5.7	10.9	102.72	191.7	-42.3	86.7	71.3	15.41	5.626		
2,100.0	2,086.2	2,179.6	2,077.2	6.0	11.7	82.78	216.1	-76.0	72.0	54.4	17.55	4.102		
2,148.1	2,133.8	2,223.9	2,116.6	6.2	12.1	70.77	228.5	-92.1	69.7	51.6	18.14	3.843	CC, ES, SF	
2,200.0	2,185.2	2,270.9	2,158.3	6.3	12.5	58.02	242.5	-108.7	72.5	54.3	18.23	3.977		
2,300.0	2,284.2	2,367.4	2,244.1	6.7	13.4	37.48	272.0	-141.5	88.8	71.5	17.35	5.118		
2,400.0	2,383.3	2,466.8	2,333.7	7.0	14.2	22.83	297.6	-176.2	108.5	92.3	16.25	6.678		
2,500.0	2,482.3	2,560.4	2,418.2	7.3	15.1	12.65	319.6	-209.9	131.2	115.7	15.52	8.454		
2,600.0	2,581.3	2,653.9	2,502.0	7.7	15.9	5.65	343.0	-244.0	158.3	143.1	15.22	10.399		
2,700.0	2,680.4	2,741.8	2,580.5	8.0	16.7	1.39	366.9	-275.7	188.6	173.3	15.29	12.329		
2,800.0	2,779.4	2,825.2	2,653.3	8.4	17.6	-1.14	393.2	-306.5	223.8	208.2	15.59	14.358		
2,900.0	2,878.5	2,914.6	2,729.8	8.7	18.5	-2.98	424.2	-340.9	262.8	246.8	15.98	16.440		
3,000.0	2,977.5	3,024.5	2,825.2	9.0	19.6	-4.75	460.1	-382.0	299.8	283.3	16.45	18.221		
3,100.0	3,076.5	3,120.9	2,911.1	9.4	20.4	-5.97	488.4	-415.4	332.1	315.2	16.92	19.625		
3,200.0	3,175.6	3,215.9	2,995.5	9.7	21.3	-6.75	517.5	-447.7	365.2	347.7	17.44	20.940		
3,300.0	3,274.6	3,326.5	3,094.8	10.1	22.3	-7.66	549.3	-484.6	396.4	378.4	17.99	22.028		
3,400.0	3,373.6	3,440.9	3,200.0	10.4	23.1	-8.73	576.8	-520.2	422.5	403.9	18.55	22.780		
3,500.0	3,472.7	3,521.4	3,273.8	10.7	23.8	-9.42	596.1	-545.7	449.1	430.1	19.02	23.606		
3,600.0	3,571.7	3,624.0	3,367.6	11.1	24.6	-10.06	622.6	-578.1	476.9	457.3	19.59	24.345		
3,700.0	3,670.7	3,742.7	3,477.5	11.4	25.5	-10.82	649.9	-613.5	501.5	481.4	20.19	24.846		
3,800.0	3,769.8	3,849.1	3,577.3	11.8	26.2	-11.46	672.1	-643.0	523.1	502.4	20.74	25.216		
3,900.0	3,868.8	3,928.1	3,651.2	12.1	26.8	-12.06	687.5	-665.9	545.0	523.8	21.23	25.668		
4,000.0	3,967.8	3,990.7	3,708.5	12.5	27.3	-12.49	702.1	-686.6	572.5	550.9	21.69	26.397		
4,100.0	4,066.9	4,080.0	3,789.1	12.8	28.1	-13.10	723.9	-718.3	603.0	580.8	22.26	27.095		
4,200.0	4,165.9	4,152.4	3,853.6	13.1	28.7	-13.57	742.4	-745.3	635.7	613.0	22.77	27.920		
4,300.0	4,265.0	4,226.5	3,918.6	13.5	29.5	-13.87	764.1	-773.8	671.9	648.6	23.30	28.836		
4,400.0	4,364.0	4,318.0	3,997.6	13.8	30.4	-13.88	794.8	-808.0	709.9	686.0	23.89	29.712		
4,500.0	4,463.0	4,479.1	4,140.6	14.2	31.9	-13.91	844.7	-862.9	743.8	719.1	24.71	30.102		
4,600.0	4,562.1	4,582.6	4,235.1	14.5	32.7	-13.98	872.9	-894.4	771.9	746.6	25.31	30.500		
4,700.0	4,661.1	4,670.3	4,315.0	14.8	33.4	-14.07	896.4	-921.6	800.3	774.5	25.86	30.947		
4,800.0	4,760.1	4,760.3	4,396.7	15.2	34.2	-14.20	920.7	-950.5	829.7	803.2	26.43	31.393		
4,900.0	4,859.2	4,856.0	4,483.6	15.5	35.0	-14.40	945.8	-981.8	859.0	832.0	27.02	31.793		
5,000.0	4,958.2	4,931.0	4,551.3	15.9	35.7	-14.48	966.6	-1,006.4	889.5	862.0	27.54	32.305		
5,100.0	5,057.2	5,025.0	4,635.6	16.2	36.5	-14.60	993.2	-1,038.4	921.3	893.2	28.13	32.754		
5,200.0	5,156.3	5,096.9	4,699.7	16.5	37.2	-14.83	1,013.4	-1,064.1	954.8	926.3	28.56	33.431		
5,300.0	5,255.8	5,171.7	4,765.6	16.8	37.9	-15.13	1,035.3	-1,091.8	993.1	964.2	28.87	34.392		

<b>Company:</b>	Synergy Resources	<b>Local Co-ordinate Reference:</b>	Well SRC Kelly Farms A-4-3NHZ
<b>Project:</b>	SEC.4-T5N-R66W	<b>TVD Reference:</b>	WELL @ 4767.0ft (Original Well Elev)
<b>Reference Site:</b>	SRC Kelly Farms Pad Sec.4-T5N-R66W	<b>MD Reference:</b>	WELL @ 4767.0ft (Original Well Elev)
<b>Site Error:</b>	0.0ft	<b>North Reference:</b>	True
<b>Reference Well:</b>	SRC Kelly Farms A-4-3NHZ	<b>Survey Calculation Method:</b>	Minimum Curvature
<b>Well Error:</b>	0.0ft	<b>Output errors are at</b>	2.00 sigma
<b>Reference Wellbore</b>	Wellbore #1	<b>Database:</b>	Landmark
<b>Reference Design:</b>	Plan #1 (5-20-13)	<b>Offset TVD Reference:</b>	Offset Datum

Offset Design Northridge Pad Sec.4-T5N-R66W - Northridge 21-4D (Exist.) - Wellbore #1 - Wellbore #1													Offset Site Error:	0.0 ft
Survey Program: 150-MWD													Offset Well Error:	0.0 ft
Reference	Offset	Semi Major Axis		Distance										Warning
Measured Depth (ft)	Vertical Depth (ft)	Measured Depth (ft)	Vertical Depth (ft)	Reference (ft)	Offset (ft)	Highside Toolface (°)	Offset Wellbore Centre +N/-S (ft)	+E/-W (ft)	Between Centres (ft)	Between Ellipses (ft)	Minimum Separation (ft)	Separation Factor		
0.0	0.0	0.0	0.0	0.0	0.0	105.06	-102.0	379.2	392.9					
100.0	100.0	85.2	85.2	0.1	0.1	105.02	-101.7	379.3	392.7	392.5	0.21	1,883.492		
200.0	200.0	187.9	187.9	0.3	0.3	104.84	-100.6	379.8	392.9	392.3	0.59	663.604		
300.0	300.0	299.7	299.6	0.6	0.5	104.23	-96.1	378.8	391.0	390.0	1.08	362.791		
400.0	400.0	409.7	409.2	0.8	0.8	103.15	-87.7	375.3	386.1	384.6	1.57	246.243		
500.0	500.0	516.2	515.1	1.0	1.1	139.48	-77.1	370.2	380.6	378.5	2.07	183.571		
600.0	599.8	622.1	619.8	1.2	1.4	138.17	-63.0	364.0	376.1	373.5	2.61	144.068		
700.0	699.5	721.6	718.0	1.5	1.8	136.97	-47.8	357.8	373.6	370.5	3.16	118.062		
739.3	738.6	760.7	756.5	1.6	1.9	136.58	-41.7	355.4	373.4	370.0	3.39	110.141		
800.0	798.7	825.1	819.9	1.7	2.2	135.97	-31.3	351.2	373.7	369.9	3.76	99.309		
900.0	897.7	932.7	925.3	2.0	2.6	134.66	-11.1	342.9	373.3	368.8	4.44	83.999		
1,000.0	996.8	1,038.9	1,028.2	2.4	3.1	132.74	13.1	333.2	371.1	365.9	5.20	71.300		
1,100.0	1,095.8	1,149.9	1,134.7	2.7	3.7	130.16	41.9	320.6	366.9	360.8	6.08	60.378		
1,200.0	1,194.8	1,250.2	1,229.7	3.0	4.3	127.28	71.0	307.4	361.4	354.4	6.98	51.754		
1,300.0	1,293.9	1,346.0	1,319.8	3.3	4.9	124.05	101.2	294.9	357.1	349.1	7.93	45.033		
1,400.0	1,392.9	1,444.5	1,412.4	3.6	5.5	120.69	132.2	282.4	354.2	345.4	8.87	39.914		
1,500.0	1,492.0	1,545.1	1,507.3	4.0	6.1	117.36	162.8	268.9	351.9	342.1	9.82	35.832		
1,600.0	1,591.0	1,643.1	1,600.0	4.3	6.7	114.25	191.6	255.7	350.5	339.7	10.76	32.584		
1,672.7	1,662.9	1,713.9	1,667.2	4.6	7.1	112.05	212.1	246.3	350.2	338.7	11.43	30.640 CC		
1,700.0	1,690.0	1,740.5	1,692.4	4.6	7.2	111.25	219.7	242.8	350.2	338.5	11.68	29.984 ES		
1,800.0	1,789.1	1,837.9	1,785.1	5.0	7.7	108.43	246.8	230.5	351.1	338.6	12.59	27.881		
1,900.0	1,888.1	1,935.3	1,878.2	5.3	8.3	105.79	273.2	218.7	353.2	339.8	13.49	26.178		
2,000.0	1,987.1	2,034.5	1,973.2	5.7	8.8	103.27	299.4	207.2	356.3	341.9	14.39	24.761		
2,100.0	2,086.2	2,135.5	2,069.9	6.0	9.4	100.80	325.5	195.2	359.5	344.2	15.29	23.510		
2,200.0	2,185.2	2,235.2	2,165.2	6.3	9.9	98.25	352.0	182.4	362.9	346.7	16.18	22.426		
2,300.0	2,284.2	2,331.6	2,257.7	6.7	10.5	96.01	376.7	170.7	367.1	350.0	17.03	21.559		
2,400.0	2,383.3	2,427.9	2,350.2	7.0	11.0	93.91	401.3	160.0	372.6	354.8	17.85	20.874		
2,500.0	2,482.3	2,525.0	2,443.0	7.3	11.5	91.65	427.5	148.8	379.3	360.6	18.69	20.299		
2,600.0	2,581.3	2,626.1	2,539.2	7.7	12.1	89.18	455.9	136.4	386.6	367.0	19.53	19.793		
2,700.0	2,680.4	2,720.1	2,628.3	8.0	12.7	86.81	482.9	124.1	394.4	374.1	20.34	19.396		
2,800.0	2,779.4	2,814.7	2,717.4	8.4	13.3	84.22	512.4	111.2	404.3	383.1	21.14	19.127		
2,900.0	2,878.5	2,918.4	2,815.1	8.7	14.0	81.63	544.1	97.5	414.8	392.8	21.93	18.909		
3,000.0	2,977.5	3,018.0	2,909.7	9.0	14.6	79.47	572.7	84.6	424.8	402.1	22.68	18.733		
3,100.0	3,076.5	3,111.0	2,997.6	9.4	15.1	77.42	600.4	72.2	436.1	412.7	23.39	18.646		
3,200.0	3,175.6	3,219.3	3,100.2	9.7	15.8	75.25	631.7	58.0	447.2	423.1	24.11	18.547		
3,300.0	3,274.6	3,317.5	3,194.2	10.1	16.3	73.68	657.8	46.2	457.8	433.0	24.78	18.474		
3,400.0	3,373.6	3,418.2	3,290.5	10.4	16.9	72.17	684.5	34.3	468.6	443.2	25.44	18.423		
3,500.0	3,472.7	3,525.4	3,393.8	10.7	17.5	70.83	710.9	22.2	478.4	452.3	26.11	18.322		
3,600.0	3,571.7	3,628.0	3,492.9	11.1	18.0	69.69	734.7	10.5	487.2	460.4	26.75	18.210		
3,700.0	3,670.7	3,724.9	3,586.6	11.4	18.5	68.70	756.8	-0.3	495.9	468.5	27.37	18.116		
3,800.0	3,769.8	3,813.7	3,672.2	11.8	18.9	67.79	778.1	-9.9	506.0	478.0	27.98	18.088 SF		
3,900.0	3,868.8	3,901.3	3,755.7	12.1	19.4	66.57	802.6	-21.0	518.8	490.3	28.56	18.168		
4,000.0	3,967.8	3,991.8	3,840.9	12.5	20.0	65.11	829.9	-33.8	533.4	504.3	29.13	18.309		
4,100.0	4,066.9	4,082.9	3,926.2	12.8	20.6	63.62	859.1	-46.9	549.9	520.3	29.70	18.519		
4,200.0	4,165.9	4,188.5	4,025.3	13.1	21.3	62.10	892.7	-60.9	567.1	536.8	30.28	18.727		
4,300.0	4,265.0	4,294.0	4,125.7	13.5	21.9	61.00	922.9	-73.1	582.1	551.2	30.88	18.850		
4,400.0	4,364.0	4,385.1	4,212.4	13.8	22.5	60.13	949.0	-83.1	597.7	566.2	31.44	19.007		
4,500.0	4,463.0	4,480.9	4,303.0	14.2	23.0	59.16	978.0	-94.3	614.6	582.6	32.01	19.200		
4,600.0	4,562.1	4,580.0	4,396.7	14.5	23.7	58.13	1,008.0	-106.6	631.4	598.9	32.58	19.384		
4,700.0	4,661.1	4,683.6	4,475.3	14.8	24.2	57.22	1,034.1	-117.7	649.2	616.1	33.10	19.616		
4,800.0	4,760.1	4,771.6	4,576.2	15.2	24.9	56.03	1,069.9	-132.2	669.1	635.4	33.66	19.875		
4,900.0	4,859.2	4,874.9	4,673.3	15.5	25.6	54.91	1,101.6	-147.4	686.2	652.0	34.20	20.063		

CC - Min centre to center distance or convergent point, SF - min separation factor, ES - min ellipse separation

<b>Company:</b>	Synergy Resources	<b>Local Co-ordinate Reference:</b>	Well SRC Kelly Farms A-4-3NHZ
<b>Project:</b>	SEC.4-T5N-R66W	<b>TVD Reference:</b>	WELL @ 4767.0ft (Original Well Elev)
<b>Reference Site:</b>	SRC Kelly Farms Pad Sec.4-T5N-R66W	<b>MD Reference:</b>	WELL @ 4767.0ft (Original Well Elev)
<b>Site Error:</b>	0.0ft	<b>North Reference:</b>	True
<b>Reference Well:</b>	SRC Kelly Farms A-4-3NHZ	<b>Survey Calculation Method:</b>	Minimum Curvature
<b>Well Error:</b>	0.0ft	<b>Output errors are at</b>	2.00 sigma
<b>Reference Wellbore</b>	Wellbore #1	<b>Database:</b>	Landmark
<b>Reference Design:</b>	Plan #1 (5-20-13)	<b>Offset TVD Reference:</b>	Offset Datum

<b>Offset Design</b> Northridge Pad Sec.4-T5N-R66W - Northridge 21-4D (Exist.) - Wellbore #1 - Wellbore #1												<b>Offset Site Error:</b>	0.0 ft
Survey Program: 150-MWD												<b>Offset Well Error:</b>	0.0 ft
Reference		Offset		Semi Major Axis			Distance						Warning
Measured Depth (ft)	Vertical Depth (ft)	Measured Depth (ft)	Vertical Depth (ft)	Reference (ft)	Offset (ft)	Highside Toolface (°)	Offset Wellbore Centre +N/-S (ft)	+E/-W (ft)	Between Centres (ft)	Between Ellipses (ft)	Minimum Separation (ft)	Separation Factor	
5,000.0	4,958.2	4,976.4	4,769.0	15.9	26.2	53.98	1,132.3	-161.3	703.5	668.8	34.74	20.249	
5,100.0	5,057.2	5,073.6	4,860.9	16.2	26.8	53.18	1,161.3	-174.0	720.6	685.3	35.28	20.423	
5,200.0	5,156.3	5,197.2	4,978.6	16.5	27.6	52.45	1,196.0	-188.9	736.8	701.0	35.87	20.540	
5,300.0	5,255.8	5,342.9	5,119.8	16.8	28.3	51.87	1,228.8	-202.9	750.1	713.7	36.38	20.616	
5,400.0	5,355.6	5,497.1	5,272.1	17.0	28.8	51.51	1,250.8	-212.4	758.0	721.2	36.81	20.589	
5,500.0	5,455.5	5,613.9	5,388.3	17.1	29.0	51.25	1,261.6	-217.6	763.9	726.8	37.08	20.600	
5,600.0	5,555.5	5,723.7	5,497.8	17.2	29.3	13.46	1,269.6	-221.1	769.9	730.1	39.79	19.352	
5,700.0	5,655.5	5,831.4	5,605.2	17.4	29.5	13.17	1,275.9	-223.5	775.1	734.9	40.23	19.264	
5,800.0	5,755.5	5,951.4	5,725.1	17.6	29.6	13.00	1,280.3	-225.0	778.4	737.8	40.64	19.155	
5,900.0	5,855.5	6,061.8	5,835.5	17.7	29.8	12.89	1,282.0	-226.0	779.7	738.7	40.98	19.027	
6,000.0	5,955.5	6,164.3	5,938.0	17.9	29.9	12.79	1,282.9	-227.2	780.2	738.9	41.30	18.892	
6,100.0	6,055.5	6,264.5	6,038.1	18.0	30.0	12.67	1,283.7	-228.8	780.7	739.0	41.62	18.756	
6,200.0	6,155.5	6,362.5	6,136.1	18.2	30.1	12.53	1,284.6	-230.5	781.2	739.3	41.96	18.620	
6,300.0	6,255.5	6,459.6	6,233.2	18.4	30.2	12.38	1,285.8	-232.3	782.1	739.8	42.29	18.491	
6,400.0	6,355.5	6,555.3	6,328.9	18.5	30.3	-77.76	1,287.5	-234.0	783.4	743.8	39.55	19.806	
6,500.0	6,455.0	6,651.2	6,424.8	18.6	30.5	-78.55	1,289.7	-235.7	783.3	743.7	39.58	19.793	
6,600.0	6,552.2	6,745.5	6,519.0	18.6	30.6	-80.40	1,292.1	-237.1	781.3	742.2	39.13	19.968	
6,700.0	6,645.3	6,838.5	6,611.9	18.6	30.7	-83.21	1,294.7	-238.5	778.4	740.1	38.36	20.294	
6,800.0	6,732.4	6,923.2	6,696.6	18.5	30.8	-86.49	1,296.9	-239.7	776.4	738.9	37.52	20.695	
6,816.7	6,746.2	6,936.0	6,709.4	18.5	30.9	-87.04	1,297.3	-239.9	776.3	738.9	37.40	20.760	
6,900.0	6,811.8	6,996.4	6,769.8	18.4	31.0	-89.71	1,299.3	-241.2	778.0	741.2	36.86	21.109	
7,000.0	6,882.1	7,059.9	6,833.2	18.3	31.1	-92.47	1,301.7	-242.8	785.9	749.4	36.55	21.502	
7,100.0	6,941.7	7,112.4	6,885.6	18.2	31.2	-94.27	1,304.1	-244.3	802.3	765.5	36.76	21.822	
7,200.0	6,989.7	7,153.6	6,926.8	18.2	31.2	-94.76	1,306.1	-245.6	828.4	790.8	37.59	22.041	
7,300.0	7,024.9	7,183.0	6,956.1	18.9	31.3	-93.64	1,307.7	-246.5	864.8	825.8	39.03	22.158	
7,400.0	7,046.8	7,205.0	6,978.1	20.3	31.3	-91.05	1,308.9	-247.3	910.9	870.0	40.90	22.271	
7,500.0	7,055.0	7,205.0	6,978.1	22.0	31.3	-85.90	1,308.9	-247.3	965.0	922.1	42.91	22.490	

<b>Company:</b>	Synergy Resources	<b>Local Co-ordinate Reference:</b>	Well SRC Kelly Farms A-4-3NHZ
<b>Project:</b>	SEC.4-T5N-R66W	<b>TVD Reference:</b>	WELL @ 4767.0ft (Original Well Elev)
<b>Reference Site:</b>	SRC Kelly Farms Pad Sec.4-T5N-R66W	<b>MD Reference:</b>	WELL @ 4767.0ft (Original Well Elev)
<b>Site Error:</b>	0.0ft	<b>North Reference:</b>	True
<b>Reference Well:</b>	SRC Kelly Farms A-4-3NHZ	<b>Survey Calculation Method:</b>	Minimum Curvature
<b>Well Error:</b>	0.0ft	<b>Output errors are at</b>	2.00 sigma
<b>Reference Wellbore</b>	Wellbore #1	<b>Database:</b>	Landmark
<b>Reference Design:</b>	Plan #1 (5-20-13)	<b>Offset TVD Reference:</b>	Offset Datum

Offset Design Northridge Pad Sec.4-T5N-R66W - Northridge 4AD (Exist.) - Wellbore #1 - Wellbore #1												Offset Site Error:	0.0 ft
Survey Program: 182-MWD												Offset Well Error:	0.0 ft
Reference	Offset	Semi Major Axis		Distance		Warning							
Measured Depth (ft)	Vertical Depth (ft)	Measured Depth (ft)	Vertical Depth (ft)	Reference (ft)	Offset (ft)	Highside Toolface (°)	Offset Wellbore Centre +N/-S (ft)	+E/-W (ft)	Between Centres (ft)	Between Ellipses (ft)	Minimum Separation (ft)	Separation Factor	
0.0	0.0	0.0	0.0	0.0	0.0	108.47	-122.8	367.5	387.7				
100.0	100.0	88.0	88.0	0.1	0.1	108.47	-122.7	367.3	387.2	387.0	0.21	1,828.626	
200.0	200.0	189.5	189.5	0.3	0.2	108.48	-122.5	366.5	386.4	385.9	0.56	692.833	
252.8	252.8	238.8	238.8	0.5	0.3	108.46	-122.3	366.3	386.2	385.4	0.78	497.607	
300.0	300.0	283.8	283.8	0.6	0.4	108.43	-122.2	366.5	386.4	385.4	0.97	396.820	
400.0	400.0	388.8	388.8	0.8	0.6	108.48	-122.4	366.4	386.3	384.9	1.42	272.745	
461.9	461.9	454.8	454.8	0.9	0.8	146.05	-122.5	365.5	386.1	384.4	1.70	227.411	
500.0	500.0	492.5	492.4	1.0	0.9	146.15	-122.3	364.9	386.3	384.5	1.86	207.435	
600.0	599.8	590.7	590.6	1.2	1.1	146.43	-121.3	363.8	389.3	387.0	2.29	169.849	
700.0	699.5	690.1	690.1	1.5	1.3	147.21	-121.8	362.3	395.4	392.7	2.73	144.823	
800.0	798.7	793.8	793.7	1.7	1.5	148.30	-122.6	360.3	404.2	401.0	3.19	126.688	
900.0	897.7	893.2	893.1	2.0	1.7	149.40	-122.4	357.9	413.8	410.1	3.64	113.624	
1,000.0	996.8	1,008.9	1,008.7	2.4	2.0	150.54	-120.9	353.6	421.9	417.7	4.13	102.118	
1,100.0	1,095.8	1,128.2	1,127.5	2.7	2.2	151.79	-117.7	343.2	424.9	420.3	4.64	91.551	
1,200.0	1,194.8	1,234.7	1,233.3	3.0	2.5	152.58	-111.7	332.6	425.7	420.6	5.13	83.031	
1,300.0	1,293.9	1,353.7	1,351.1	3.3	2.9	153.48	-103.7	317.7	424.0	418.3	5.65	75.046	
1,400.0	1,392.9	1,468.8	1,464.1	3.6	3.2	154.19	-92.5	299.2	417.5	411.3	6.18	67.612	
1,500.0	1,492.0	1,569.8	1,563.0	4.0	3.6	154.95	-82.7	281.0	409.5	402.8	6.66	61.449	
1,600.0	1,591.0	1,681.1	1,671.5	4.3	4.0	156.06	-72.3	258.4	399.7	392.5	7.19	55.621	
1,700.0	1,690.0	1,785.7	1,772.8	4.6	4.5	157.12	-61.1	235.3	387.6	379.9	7.70	50.329	
1,800.0	1,789.1	1,884.2	1,868.2	5.0	4.9	158.29	-51.1	212.7	375.2	367.1	8.19	45.806	
1,900.0	1,888.1	1,988.2	1,968.8	5.3	5.4	159.50	-39.7	189.1	362.8	354.1	8.70	41.690	
2,000.0	1,987.1	2,094.9	2,071.4	5.7	6.0	160.75	-26.4	163.2	348.3	339.1	9.24	37.698	
2,100.0	2,086.2	2,201.9	2,173.8	6.0	6.6	161.94	-10.8	135.8	331.8	322.0	9.79	33.890	
2,200.0	2,185.2	2,302.9	2,269.7	6.3	7.1	163.07	5.4	108.8	313.5	303.1	10.33	30.354	
2,300.0	2,284.2	2,398.0	2,360.1	6.7	7.7	164.37	20.2	83.2	295.4	284.6	10.84	27.251	
2,400.0	2,383.3	2,496.1	2,453.5	7.0	8.2	165.91	35.0	57.2	278.1	266.7	11.37	24.461	
2,500.0	2,482.3	2,599.5	2,551.6	7.3	8.8	167.52	52.2	29.5	259.9	247.9	11.94	21.770	
2,600.0	2,581.3	2,697.9	2,644.8	7.7	9.4	169.10	69.6	3.1	241.1	228.6	12.50	19.284	
2,700.0	2,680.4	2,799.1	2,740.2	8.0	10.1	171.48	86.9	-26.1	221.4	208.2	13.13	16.857	
2,800.0	2,779.4	2,894.1	2,829.4	8.4	10.7	174.52	102.5	-54.7	201.7	187.9	13.82	14.596	
2,900.0	2,878.5	2,986.1	2,916.8	8.7	11.3	177.68	116.3	-79.7	185.7	171.2	14.54	12.774	
3,000.0	2,977.5	3,086.3	3,012.1	9.0	11.8	-178.13	130.7	-107.1	171.0	155.5	15.42	11.084	
3,100.0	3,076.5	3,184.6	3,105.4	9.4	12.4	-173.69	146.4	-133.6	156.1	139.6	16.42	9.506	
3,200.0	3,175.6	3,278.5	3,195.1	9.7	13.0	-168.87	160.3	-157.7	143.9	126.4	17.51	8.221	
3,300.0	3,274.6	3,374.0	3,286.9	10.1	13.5	-162.96	171.4	-181.6	136.4	117.6	18.82	7.246	
3,400.0	3,373.6	3,472.1	3,381.5	10.4	14.0	-156.63	182.6	-205.3	131.0	110.7	20.29	6.456	
3,500.0	3,472.7	3,570.4	3,476.4	10.7	14.5	-149.91	192.8	-228.8	128.5	106.6	21.86	5.878	
3,600.0	3,571.7	3,670.1	3,572.8	11.1	15.0	-143.37	204.0	-251.7	126.9	103.5	23.42	5.419	
3,700.0	3,670.7	3,772.0	3,670.9	11.4	15.6	-136.07	216.2	-276.2	126.5	101.4	25.08	5.044	
3,800.0	3,769.8	3,874.4	3,768.5	11.8	16.2	-127.47	232.4	-302.8	124.7	97.9	26.81	4.652	
3,876.1	3,845.1	3,950.1	3,839.7	12.0	16.7	-119.94	246.5	-324.1	123.9	95.8	28.08	4.412 CC	
3,900.0	3,868.8	3,973.6	3,861.7	12.1	16.9	-117.46	251.0	-331.0	124.0	95.6	28.45	4.359 ES	
4,000.0	3,967.8	4,070.3	3,952.1	12.5	17.5	-107.11	270.1	-359.8	127.1	97.4	29.69	4.280 SF	
4,100.0	4,066.9	4,167.4	4,043.1	12.8	18.2	-97.97	288.2	-388.2	134.7	104.3	30.45	4.424	
4,200.0	4,165.9	4,264.1	4,135.0	13.1	18.8	-91.53	303.2	-414.2	145.5	114.5	30.92	4.704	
4,300.0	4,265.0	4,360.0	4,226.2	13.5	19.4	-86.21	317.3	-440.6	158.8	127.5	31.29	5.076	
4,400.0	4,364.0	4,461.0	4,321.4	13.8	20.0	-80.63	334.2	-469.6	173.6	142.1	31.50	5.510	
4,500.0	4,463.0	4,555.0	4,409.9	14.2	20.6	-75.96	351.1	-496.3	188.9	157.2	31.66	5.966	
4,600.0	4,562.1	4,649.0	4,497.5	14.5	21.3	-71.71	367.9	-525.8	208.2	176.4	31.78	6.551	
4,700.0	4,661.1	4,751.9	4,593.5	14.8	22.1	-67.91	386.2	-558.0	228.5	196.6	31.92	7.158	
4,800.0	4,760.1	4,851.3	4,686.8	15.2	22.7	-64.75	404.8	-586.8	247.0	214.9	32.07	7.700	

CC - Min centre to center distance or convergent point, SF - min separation factor, ES - min ellipse separation

<b>Company:</b>	Synergy Resources	<b>Local Co-ordinate Reference:</b>	Well SRC Kelly Farms A-4-3NHZ
<b>Project:</b>	SEC.4-T5N-R66W	<b>TVD Reference:</b>	WELL @ 4767.0ft (Original Well Elev)
<b>Reference Site:</b>	SRC Kelly Farms Pad Sec.4-T5N-R66W	<b>MD Reference:</b>	WELL @ 4767.0ft (Original Well Elev)
<b>Site Error:</b>	0.0ft	<b>North Reference:</b>	True
<b>Reference Well:</b>	SRC Kelly Farms A-4-3NHZ	<b>Survey Calculation Method:</b>	Minimum Curvature
<b>Well Error:</b>	0.0ft	<b>Output errors are at</b>	2.00 sigma
<b>Reference Wellbore</b>	Wellbore #1	<b>Database:</b>	Landmark
<b>Reference Design:</b>	Plan #1 (5-20-13)	<b>Offset TVD Reference:</b>	Offset Datum

Offset Design Northridge Pad Sec.4-T5N-R66W - Northridge 4AD (Exist.) - Wellbore #1 - Wellbore #1												Offset Site Error:	0.0 ft
Survey Program: 182-MWD												Offset Well Error:	0.0 ft
Reference		Offset		Semi Major Axis			Distance						
Measured Depth (ft)	Vertical Depth (ft)	Measured Depth (ft)	Vertical Depth (ft)	Reference (ft)	Offset (ft)	Highside Toolface (°)	Offset Wellbore Centre +N/-S (ft)	+E/-W (ft)	Between Centres (ft)	Between Ellipses (ft)	Minimum Separation (ft)	Separation Factor	Warning
4,900.0	4,859.2	4,951.8	4,781.9	15.5	23.3	-62.51	421.7	-614.7	265.0	232.7	32.36	8.191	
5,000.0	4,958.2	5,053.3	4,878.1	15.9	24.0	-60.50	439.1	-641.8	282.5	249.8	32.66	8.651	
5,100.0	5,057.2	5,157.1	4,977.4	16.2	24.6	-59.18	454.7	-667.5	298.3	265.2	33.08	9.019	
5,200.0	5,156.3	5,267.2	5,084.0	16.5	25.1	-58.75	467.3	-692.3	312.8	279.1	33.63	9.300	
5,300.0	5,255.8	5,375.3	5,189.9	16.8	25.6	-58.55	477.0	-711.5	324.2	290.1	34.09	9.508	
5,400.0	5,355.6	5,483.8	5,296.7	17.0	26.0	-58.10	485.1	-728.6	335.6	301.2	34.42	9.750	
5,500.0	5,455.5	5,597.3	5,409.3	17.1	26.3	-57.68	490.5	-742.1	345.2	310.6	34.68	9.956	
5,600.0	5,555.5	5,706.8	5,518.4	17.2	26.5	-94.46	494.7	-750.9	352.7	314.7	38.04	9.272	
5,700.0	5,655.5	5,810.3	5,621.5	17.4	26.7	-93.54	499.9	-757.7	359.0	320.3	38.65	9.288	
5,800.0	5,755.5	5,917.3	5,728.3	17.6	26.9	-92.98	503.1	-762.7	363.5	324.3	39.15	9.284	
5,900.0	5,855.5	6,016.4	5,827.4	17.7	27.1	-92.68	504.8	-766.2	366.9	327.3	39.56	9.273	
6,000.0	5,955.5	6,115.1	5,925.9	17.9	27.2	-92.54	505.6	-770.4	371.1	331.2	39.94	9.291	
6,100.0	6,055.5	6,216.6	6,027.4	18.0	27.4	-92.41	506.2	-774.5	375.1	334.8	40.32	9.302	
6,200.0	6,155.5	6,316.6	6,127.3	18.2	27.5	-92.38	506.3	-778.3	378.8	338.2	40.68	9.313	
6,300.0	6,255.5	6,419.1	6,229.8	18.4	27.7	-92.48	505.4	-781.9	382.4	341.4	41.00	9.328	
6,400.0	6,355.5	6,524.7	6,335.3	18.5	27.8	177.31	503.9	-784.3	385.0	348.1	36.91	10.429	
6,500.0	6,455.0	6,620.4	6,431.0	18.6	27.9	177.17	502.7	-786.2	396.3	359.9	36.43	10.878	
6,600.0	6,552.2	6,715.2	6,525.7	18.6	28.0	177.17	502.2	-788.9	422.1	386.8	35.31	11.956	
6,700.0	6,645.3	6,809.5	6,620.0	18.6	28.2	177.09	501.0	-791.4	460.9	427.3	33.65	13.699	
6,800.0	6,732.4	6,897.0	6,707.4	18.5	28.3	176.91	499.2	-793.3	511.8	480.3	31.52	16.237	
6,900.0	6,811.8	6,976.2	6,786.6	18.4	28.3	176.73	497.8	-794.9	574.0	545.0	29.00	19.790	
7,000.0	6,882.1	7,040.6	6,851.0	18.3	28.4	176.49	496.9	-796.3	646.5	620.2	26.26	24.620	
7,100.0	6,941.7	7,092.2	6,902.6	18.2	28.5	176.08	496.5	-797.8	728.4	704.9	23.53	30.961	
7,200.0	6,989.7	7,132.0	6,942.3	18.2	28.6	175.28	496.3	-799.3	817.7	796.6	21.17	38.635	
7,300.0	7,024.9	7,163.3	6,973.6	18.9	28.6	173.51	496.3	-800.6	912.6	892.8	19.79	46.121	



<b>Company:</b>	Synergy Resources	<b>Local Co-ordinate Reference:</b>	Well SRC Kelly Farms A-4-3NHZ
<b>Project:</b>	SEC.4-T5N-R66W	<b>TVD Reference:</b>	WELL @ 4767.0ft (Original Well Elev)
<b>Reference Site:</b>	SRC Kelly Farms Pad Sec.4-T5N-R66W	<b>MD Reference:</b>	WELL @ 4767.0ft (Original Well Elev)
<b>Site Error:</b>	0.0ft	<b>North Reference:</b>	True
<b>Reference Well:</b>	SRC Kelly Farms A-4-3NHZ	<b>Survey Calculation Method:</b>	Minimum Curvature
<b>Well Error:</b>	0.0ft	<b>Output errors are at</b>	2.00 sigma
<b>Reference Wellbore</b>	Wellbore #1	<b>Database:</b>	Landmark
<b>Reference Design:</b>	Plan #1 (5-20-13)	<b>Offset TVD Reference:</b>	Offset Datum

Offset Design													Offset Site Error:	0.0 ft
Survey Program: 0-MWD													Offset Well Error:	0.0 ft
Reference		Offset		Semi Major Axis			Distance							Warning
Measured Depth (ft)	Vertical Depth (ft)	Measured Depth (ft)	Vertical Depth (ft)	Reference (ft)	Offset (ft)	Highside Toolface (°)	Offset Wellbore Centre +N/-S (ft)	+E/-W (ft)	Between Centres (ft)	Between Ellipses (ft)	Minimum Separation (ft)	Separation Factor		
0.0	0.0	0.0	0.0	0.0	0.0	78.45	8.0	39.3	40.1					
100.0	100.0	98.0	98.0	0.1	0.1	78.45	8.0	39.3	40.1	39.8	0.22	180.048		
200.0	200.0	198.0	198.0	0.3	0.3	78.45	8.0	39.3	40.1	39.4	0.67	59.816		
300.0	300.0	298.0	298.0	0.6	0.6	76.05	9.6	38.8	40.0	38.9	1.12	35.724		
317.8	317.8	315.8	315.8	0.6	0.6	75.10	10.3	38.7	40.0	38.8	1.20	33.307 CC		
400.0	400.0	397.8	397.7	0.8	0.8	68.70	14.6	37.5	40.2	38.7	1.58	25.549 ES		
500.0	500.0	497.3	496.8	1.0	1.0	96.76	22.9	35.3	42.3	40.2	2.05	20.648		
600.0	599.8	596.5	595.2	1.2	1.3	88.78	34.5	32.2	46.6	44.1	2.55	18.303		
700.0	699.5	695.4	692.9	1.5	1.6	82.72	49.3	28.3	53.0	49.9	3.09	17.154		
800.0	798.7	794.0	789.7	1.7	2.0	78.49	67.3	23.5	61.0	57.3	3.68	16.568		
900.0	897.7	892.0	885.3	2.0	2.4	74.50	88.4	17.9	71.0	66.6	4.32	16.410		
1,000.0	996.8	989.3	979.4	2.4	2.9	69.76	112.4	11.5	83.4	78.4	4.98	16.760		
1,100.0	1,095.8	1,086.9	1,072.9	2.7	3.4	65.05	139.3	4.3	98.4	92.8	5.62	17.498		
1,200.0	1,194.8	1,185.4	1,167.2	3.0	4.0	61.42	166.8	-3.0	114.3	108.0	6.26	18.247		
1,300.0	1,293.9	1,283.9	1,261.5	3.3	4.5	58.68	194.3	-10.3	130.5	123.6	6.89	18.925		
1,400.0	1,392.9	1,382.4	1,355.8	3.6	5.1	56.54	221.8	-17.6	146.9	139.4	7.52	19.527		
1,500.0	1,492.0	1,480.9	1,450.1	4.0	5.6	54.84	249.3	-24.9	163.5	155.4	8.15	20.062		
1,600.0	1,591.0	1,579.4	1,544.4	4.3	6.2	53.45	276.8	-32.3	180.2	171.4	8.78	20.536		
1,700.0	1,690.0	1,677.9	1,638.7	4.6	6.8	52.30	304.3	-39.6	197.0	187.6	9.40	20.957		
1,800.0	1,789.1	1,776.4	1,733.1	5.0	7.3	51.32	331.8	-46.9	213.9	203.8	10.02	21.334		
1,900.0	1,888.1	1,874.9	1,827.4	5.3	7.9	50.49	359.3	-54.2	230.8	220.1	10.65	21.672		
2,000.0	1,987.1	1,973.5	1,921.7	5.7	8.5	49.78	386.8	-61.5	247.7	236.4	11.27	21.976		
2,100.0	2,086.2	2,072.0	2,016.0	6.0	9.0	49.15	414.3	-68.9	264.7	252.8	11.90	22.251		
2,200.0	2,185.2	2,170.5	2,110.3	6.3	9.6	48.60	441.8	-76.2	281.7	269.2	12.52	22.501		
2,300.0	2,284.2	2,269.0	2,204.6	6.7	10.2	48.11	469.3	-83.5	298.7	285.6	13.14	22.729		
2,400.0	2,383.3	2,367.5	2,298.9	7.0	10.8	47.68	496.8	-90.8	315.8	302.0	13.77	22.937		
2,500.0	2,482.3	2,466.0	2,393.2	7.3	11.3	47.29	524.3	-98.1	332.8	318.5	14.39	23.128		
2,600.0	2,581.3	2,564.5	2,487.5	7.7	11.9	46.94	551.8	-105.5	349.9	334.9	15.02	23.304		
2,700.0	2,680.4	2,663.0	2,581.8	8.0	12.5	46.62	579.3	-112.8	367.0	351.4	15.64	23.467		
2,800.0	2,779.4	2,761.5	2,676.1	8.4	13.1	46.33	606.8	-120.1	384.1	367.9	16.26	23.617		
2,900.0	2,878.5	2,860.0	2,770.5	8.7	13.7	46.06	634.3	-127.4	401.2	384.3	16.89	23.757		
3,000.0	2,977.5	2,958.5	2,864.8	9.0	14.2	45.82	661.8	-134.7	418.3	400.8	17.51	23.887		
3,100.0	3,076.5	3,057.1	2,959.1	9.4	14.8	45.59	689.3	-142.0	435.5	417.3	18.14	24.009		
3,200.0	3,175.6	3,155.6	3,053.4	9.7	15.4	45.38	716.8	-149.4	452.6	433.8	18.76	24.123		
3,300.0	3,274.6	3,254.1	3,147.7	10.1	16.0	45.19	744.3	-156.7	469.7	450.3	19.39	24.229		
3,400.0	3,373.6	3,352.6	3,242.0	10.4	16.5	45.01	771.8	-164.0	486.9	466.9	20.01	24.329		
3,500.0	3,472.7	3,451.1	3,336.3	10.7	17.1	44.84	799.3	-171.3	504.0	483.4	20.64	24.423		
3,600.0	3,571.7	3,549.6	3,430.6	11.1	17.7	44.69	826.8	-178.6	521.2	499.9	21.26	24.511		
3,700.0	3,670.7	3,648.1	3,524.9	11.4	18.3	44.54	854.3	-186.0	538.3	516.4	21.89	24.595		
3,800.0	3,769.8	3,746.6	3,619.2	11.8	18.8	44.40	881.8	-193.3	555.5	533.0	22.51	24.674		
3,900.0	3,868.8	3,845.1	3,713.5	12.1	19.4	44.28	909.3	-200.6	572.6	549.5	23.14	24.749		
4,000.0	3,967.8	3,943.6	3,807.9	12.5	20.0	44.15	936.8	-207.9	589.8	566.0	23.76	24.820		
4,100.0	4,066.9	4,042.1	3,902.2	12.8	20.6	44.04	964.3	-215.2	606.9	582.6	24.39	24.887		
4,200.0	4,165.9	4,140.7	3,996.5	13.1	21.2	43.93	991.8	-222.6	624.1	599.1	25.01	24.951		
4,300.0	4,265.0	4,239.2	4,090.8	13.5	21.7	43.83	1,019.3	-229.9	641.3	615.6	25.64	25.012		
4,400.0	4,364.0	4,337.7	4,185.1	13.8	22.3	43.73	1,046.8	-237.2	658.4	632.2	26.26	25.070		
4,500.0	4,463.0	4,436.2	4,279.4	14.2	22.9	43.64	1,074.3	-244.5	675.6	648.7	26.89	25.125		
4,600.0	4,562.1	4,534.7	4,373.7	14.5	23.5	43.55	1,101.8	-251.8	692.8	665.3	27.52	25.178		
4,700.0	4,661.1	4,633.2	4,468.0	14.8	24.0	43.47	1,129.3	-259.1	710.0	681.8	28.14	25.229		
4,800.0	4,760.1	4,731.7	4,562.3	15.2	24.6	43.39	1,156.8	-266.5	727.1	698.4	28.77	25.277		
4,900.0	4,859.2	4,830.2	4,656.6	15.5	25.2	43.31	1,184.3	-273.8	744.3	714.9	29.39	25.323		
5,000.0	4,958.2	4,928.7	4,750.9	15.9	25.8	43.24	1,211.8	-281.1	761.5	731.5	30.02	25.368		

CC - Min centre to center distance or convergent point, SF - min separation factor, ES - min ellipse separation

<b>Company:</b>	Synergy Resources	<b>Local Co-ordinate Reference:</b>	Well SRC Kelly Farms A-4-3NHZ
<b>Project:</b>	SEC.4-T5N-R66W	<b>TVD Reference:</b>	WELL @ 4767.0ft (Original Well Elev)
<b>Reference Site:</b>	SRC Kelly Farms Pad Sec.4-T5N-R66W	<b>MD Reference:</b>	WELL @ 4767.0ft (Original Well Elev)
<b>Site Error:</b>	0.0ft	<b>North Reference:</b>	True
<b>Reference Well:</b>	SRC Kelly Farms A-4-3NHZ	<b>Survey Calculation Method:</b>	Minimum Curvature
<b>Well Error:</b>	0.0ft	<b>Output errors are at</b>	2.00 sigma
<b>Reference Wellbore</b>	Wellbore #1	<b>Database:</b>	Landmark
<b>Reference Design:</b>	Plan #1 (5-20-13)	<b>Offset TVD Reference:</b>	Offset Datum

Offset Design												Offset Site Error:	0.0 ft
Survey Program: 0-MWDD												Offset Well Error:	0.0 ft
Reference		Offset		Semi Major Axis			Distance						Warning
Measured Depth (ft)	Vertical Depth (ft)	Measured Depth (ft)	Vertical Depth (ft)	Reference (ft)	Offset (ft)	Highside Toolface (°)	Offset Wellbore Centre +N/-S (ft)	+E/-W (ft)	Between Centres (ft)	Between Ellipses (ft)	Minimum Separation (ft)	Separation Factor	
5,100.0	5,057.2	5,027.2	4,845.3	16.2	26.4	43.17	1,239.3	-288.4	778.7	748.0	30.64	25.410	
5,200.0	5,156.3	5,125.7	4,939.5	16.5	26.9	43.21	1,266.8	-295.7	796.2	765.0	31.24	25.485	
5,300.0	5,255.8	5,223.6	5,033.3	16.8	27.5	43.25	1,294.1	-303.0	816.0	784.3	31.73	25.718	
5,400.0	5,355.6	5,321.0	5,126.5	17.0	28.1	43.17	1,321.3	-310.2	838.3	806.1	32.15	26.077	
5,500.0	5,455.5	5,417.5	5,218.9	17.1	28.6	42.99	1,348.2	-317.4	863.1	830.6	32.50	26.558	
5,600.0	5,555.5	5,513.3	5,310.6	17.2	29.2	5.06	1,375.0	-324.5	890.1	846.9	43.21	20.598	
5,700.0	5,655.5	5,622.7	5,415.4	17.4	29.8	4.37	1,405.2	-332.6	917.2	873.1	44.08	20.805	
5,800.0	5,755.5	5,762.6	5,550.8	17.6	30.4	3.65	1,439.0	-341.6	941.0	896.0	44.95	20.934	
5,900.0	5,855.5	5,905.7	5,691.0	17.7	30.9	3.09	1,467.0	-349.0	960.2	914.5	45.71	21.005	
6,000.0	5,955.5	6,051.5	5,835.0	17.9	31.3	2.68	1,488.5	-354.7	974.8	928.4	46.36	21.025	
6,100.0	6,055.5	6,199.2	5,982.0	18.0	31.6	2.42	1,503.0	-358.6	984.5	937.6	46.90	20.989	
6,200.0	6,155.5	6,348.0	6,130.6	18.2	31.8	2.29	1,510.2	-360.5	989.3	941.9	47.32	20.907	
6,300.0	6,255.5	6,470.9	6,253.5	18.4	31.9	2.27	1,511.0	-360.7	989.8	942.2	47.62	20.787	
6,334.3	6,289.8	6,505.2	6,287.8	18.4	32.0	-87.73	1,511.0	-360.7	989.8	954.4	35.43	27.934	
6,400.0	6,355.5	6,570.0	6,352.5	18.5	32.0	-87.72	1,511.0	-360.5	989.8	954.1	35.65	27.761	
6,500.0	6,455.0	6,664.8	6,446.9	18.6	32.1	-87.73	1,511.0	-351.9	989.8	953.9	35.85	27.611	
6,600.0	6,552.2	6,759.6	6,539.3	18.6	32.1	-87.79	1,511.0	-330.9	989.8	953.9	35.87	27.589	
6,700.0	6,645.3	6,854.7	6,628.3	18.6	32.1	-87.88	1,511.0	-297.8	989.7	953.9	35.79	27.654	
6,800.0	6,732.4	6,950.0	6,712.4	18.5	32.0	-88.02	1,511.0	-253.1	989.6	953.9	35.68	27.737	
6,900.0	6,811.8	7,045.5	6,790.0	18.4	31.9	-88.19	1,511.0	-197.5	989.5	953.8	35.67	27.740	
7,000.0	6,882.1	7,141.5	6,859.8	18.3	31.9	-88.40	1,511.0	-131.7	989.4	953.5	35.92	27.543	
7,100.0	6,941.7	7,238.0	6,920.5	18.2	31.8	-88.63	1,511.0	-56.8	989.3	952.7	36.60	27.030	
7,200.0	6,989.7	7,335.0	6,970.8	18.2	31.7	-88.90	1,511.0	26.1	989.2	951.3	37.84	26.141	
7,300.0	7,024.9	7,432.6	7,009.6	18.9	31.7	-89.18	1,511.0	115.6	989.1	949.4	39.71	24.905	
7,400.0	7,046.8	7,530.9	7,036.1	20.3	31.7	-89.48	1,511.0	210.1	989.0	946.8	42.21	23.431	
7,500.0	7,055.0	7,629.9	7,049.4	22.0	31.8	-89.80	1,511.0	308.1	989.0	943.7	45.22	21.868	
7,600.0	7,055.0	7,729.7	7,051.0	23.9	32.0	-89.88	1,511.0	407.9	988.9	940.2	48.69	20.310	
7,700.0	7,055.0	7,829.7	7,051.0	25.9	32.4	-89.88	1,511.0	507.9	988.9	936.4	52.52	18.828	
7,800.0	7,055.0	7,929.7	7,051.0	28.1	33.2	-89.88	1,511.0	607.9	988.9	932.3	56.65	17.455	
7,900.0	7,055.0	8,029.7	7,051.0	30.4	34.4	-89.88	1,511.0	707.9	988.9	927.9	61.02	16.206	
8,000.0	7,055.0	8,129.7	7,051.0	32.7	36.0	-89.88	1,511.0	807.9	988.9	923.3	65.58	15.080	
8,100.0	7,055.0	8,229.7	7,051.0	35.1	37.9	-89.88	1,511.0	907.9	988.9	918.6	70.29	14.069	
8,200.0	7,055.0	8,329.7	7,051.0	37.6	40.0	-89.88	1,511.0	1,007.9	988.9	913.7	75.12	13.164	
8,300.0	7,055.0	8,429.7	7,051.0	40.1	42.2	-89.88	1,511.0	1,107.9	988.9	908.8	80.06	12.352	
8,400.0	7,055.0	8,529.7	7,051.0	42.6	44.5	-89.88	1,511.0	1,207.9	988.8	903.8	85.08	11.623	
8,500.0	7,055.0	8,629.7	7,051.0	45.2	46.9	-89.88	1,511.0	1,307.9	988.8	898.7	90.17	10.966	
8,600.0	7,055.0	8,729.7	7,051.0	47.8	49.3	-89.88	1,511.0	1,407.9	988.8	893.5	95.32	10.374	
8,700.0	7,055.0	8,829.7	7,051.0	50.5	51.8	-89.88	1,511.0	1,507.9	988.8	888.3	100.52	9.837	
8,800.0	7,055.0	8,929.7	7,051.0	53.1	54.3	-89.88	1,511.0	1,607.9	988.8	883.0	105.76	9.349	
8,900.0	7,055.0	9,029.7	7,051.0	55.8	56.9	-89.88	1,511.0	1,707.9	988.8	877.7	111.04	8.905	
9,000.0	7,055.0	9,129.7	7,051.0	58.4	59.4	-89.88	1,511.0	1,807.9	988.8	872.4	116.35	8.498	
9,100.0	7,055.0	9,229.7	7,051.0	61.1	62.0	-89.88	1,511.0	1,907.9	988.8	867.1	121.69	8.125	
9,200.0	7,055.0	9,329.7	7,051.0	63.8	64.6	-89.88	1,511.0	2,007.9	988.8	861.7	127.05	7.782	
9,300.0	7,055.0	9,429.7	7,051.0	66.5	67.3	-89.88	1,511.0	2,107.9	988.7	856.3	132.44	7.466	
9,400.0	7,055.0	9,529.7	7,051.0	69.2	69.9	-89.88	1,511.0	2,207.9	988.7	850.9	137.84	7.173	
9,500.0	7,055.0	9,629.7	7,051.0	71.9	72.6	-89.88	1,511.0	2,307.9	988.7	845.5	143.26	6.902	
9,600.0	7,055.0	9,729.7	7,051.0	74.7	75.2	-89.88	1,511.0	2,407.9	988.7	840.0	148.69	6.650	
9,700.0	7,055.0	9,829.7	7,051.0	77.4	77.9	-89.88	1,511.0	2,507.9	988.7	834.6	154.13	6.415	
9,800.0	7,055.0	9,929.7	7,051.0	80.1	80.6	-89.88	1,511.0	2,607.9	988.7	829.1	159.59	6.195	
9,900.0	7,055.0	10,029.7	7,051.0	82.9	83.3	-89.88	1,511.0	2,707.9	988.7	823.6	165.06	5.990	
10,000.0	7,055.0	10,129.7	7,051.0	85.6	86.0	-89.88	1,511.0	2,807.9	988.7	818.1	170.54	5.797	
10,100.0	7,055.0	10,229.7	7,051.0	88.4	88.7	-89.88	1,511.0	2,907.9	988.7	812.6	176.03	5.617	

CC - Min centre to center distance or convergent point, SF - min separation factor, ES - min ellipse separation



<b>Company:</b>	Synergy Resources	<b>Local Co-ordinate Reference:</b>	Well SRC Kelly Farms A-4-3NHZ
<b>Project:</b>	SEC.4-T5N-R66W	<b>TVD Reference:</b>	WELL @ 4767.0ft (Original Well Elev)
<b>Reference Site:</b>	SRC Kelly Farms Pad Sec.4-T5N-R66W	<b>MD Reference:</b>	WELL @ 4767.0ft (Original Well Elev)
<b>Site Error:</b>	0.0ft	<b>North Reference:</b>	True
<b>Reference Well:</b>	SRC Kelly Farms A-4-3NHZ	<b>Survey Calculation Method:</b>	Minimum Curvature
<b>Well Error:</b>	0.0ft	<b>Output errors are at</b>	2.00 sigma
<b>Reference Wellbore</b>	Wellbore #1	<b>Database:</b>	Landmark
<b>Reference Design:</b>	Plan #1 (5-20-13)	<b>Offset TVD Reference:</b>	Offset Datum

Offset Design												Offset Site Error:	0.0 ft
SRC Kelly Farms Pad Sec.4-T5N-R66W - SRC Kelly Farms 21-4-3NHZ - Wellbore #1 - Plan #1 (5-20-1												Offset Well Error:	0.0 ft
Survey Program: 0-MWD													
Reference		Offset		Semi Major Axis			Distance						
Measured Depth (ft)	Vertical Depth (ft)	Measured Depth (ft)	Vertical Depth (ft)	Reference (ft)	Offset (ft)	Highside Toolface (°)	Offset Wellbore Centre +N/-S (ft)	+E/-W (ft)	Between Centres (ft)	Between Ellipses (ft)	Minimum Separation (ft)	Separation Factor	Warning
10,200.0	7,055.0	10,329.7	7,051.0	91.1	91.4	-89.88	1,511.0	3,007.9	988.6	807.1	181.52	5.446	
10,300.0	7,055.0	10,429.7	7,051.0	93.9	94.1	-89.88	1,511.0	3,107.9	988.6	801.6	187.02	5.286	
10,400.0	7,055.0	10,529.7	7,051.0	96.6	96.9	-89.88	1,511.0	3,207.9	988.6	796.1	192.53	5.135	
10,500.0	7,055.0	10,629.7	7,051.0	99.4	99.6	-89.88	1,511.0	3,307.9	988.6	790.6	198.04	4.992	
10,600.0	7,055.0	10,729.7	7,051.0	102.2	102.3	-89.88	1,511.0	3,407.9	988.6	785.0	203.56	4.856	
10,700.0	7,055.0	10,829.7	7,051.0	104.9	105.1	-89.88	1,511.0	3,507.9	988.6	779.5	209.09	4.728	
10,800.0	7,055.0	10,929.7	7,051.0	107.7	107.8	-89.88	1,511.0	3,607.9	988.6	774.0	214.62	4.606	
10,900.0	7,055.0	11,029.7	7,051.0	110.5	110.5	-89.88	1,511.0	3,707.9	988.6	768.4	220.15	4.490	
11,000.0	7,055.0	11,129.7	7,051.0	113.2	113.3	-89.88	1,511.0	3,807.9	988.6	762.9	225.69	4.380	
11,100.0	7,055.0	11,229.7	7,051.0	116.0	116.0	-89.88	1,511.0	3,907.9	988.5	757.3	231.23	4.275	
11,200.0	7,055.0	11,329.7	7,051.0	118.8	118.8	-89.88	1,511.0	4,007.9	988.5	751.8	236.78	4.175	
11,300.0	7,055.0	11,429.7	7,051.0	121.6	121.5	-89.88	1,511.0	4,107.9	988.5	746.2	242.33	4.079	
11,400.0	7,055.0	11,529.7	7,051.0	124.3	124.3	-89.88	1,511.0	4,207.9	988.5	740.6	247.88	3.988	
11,500.0	7,055.0	11,629.7	7,051.0	127.1	127.1	-89.88	1,511.0	4,307.9	988.5	735.1	253.43	3.900	
11,600.0	7,055.0	11,729.7	7,051.0	129.9	129.8	-89.88	1,511.0	4,407.9	988.5	729.5	258.99	3.817	
11,700.0	7,055.0	11,829.7	7,051.0	132.7	132.6	-89.88	1,511.0	4,507.9	988.5	723.9	264.55	3.736	
11,800.0	7,055.0	11,929.7	7,051.0	135.5	135.4	-89.88	1,511.0	4,607.9	988.5	718.4	270.11	3.659	
11,900.0	7,055.0	12,029.7	7,051.0	138.2	138.1	-89.88	1,511.0	4,707.9	988.5	712.8	275.68	3.586	
12,000.0	7,055.0	12,129.7	7,051.0	141.0	140.9	-89.88	1,511.0	4,807.9	988.4	707.2	281.24	3.515	
12,100.0	7,055.0	12,229.7	7,051.0	143.8	143.7	-89.88	1,511.0	4,907.9	988.4	701.6	286.81	3.446	
12,200.0	7,055.0	12,329.7	7,051.0	146.6	146.4	-89.88	1,511.0	5,007.9	988.4	696.0	292.38	3.381	
12,300.0	7,055.0	12,429.7	7,051.0	149.4	149.2	-89.88	1,511.0	5,107.9	988.4	690.5	297.95	3.317	
12,400.0	7,055.0	12,529.7	7,051.0	152.2	152.0	-89.88	1,511.0	5,207.9	988.4	684.9	303.53	3.256	
12,404.0	7,055.0	12,533.7	7,051.0	152.3	152.1	-89.88	1,511.0	5,211.9	988.4	684.6	303.75	3.254 SF	

<b>Company:</b>	Synergy Resources	<b>Local Co-ordinate Reference:</b>	Well SRC Kelly Farms A-4-3NHZ
<b>Project:</b>	SEC.4-T5N-R66W	<b>TVD Reference:</b>	WELL @ 4767.0ft (Original Well Elev)
<b>Reference Site:</b>	SRC Kelly Farms Pad Sec.4-T5N-R66W	<b>MD Reference:</b>	WELL @ 4767.0ft (Original Well Elev)
<b>Site Error:</b>	0.0ft	<b>North Reference:</b>	True
<b>Reference Well:</b>	SRC Kelly Farms A-4-3NHZ	<b>Survey Calculation Method:</b>	Minimum Curvature
<b>Well Error:</b>	0.0ft	<b>Output errors are at</b>	2.00 sigma
<b>Reference Wellbore</b>	Wellbore #1	<b>Database:</b>	Landmark
<b>Reference Design:</b>	Plan #1 (5-20-13)	<b>Offset TVD Reference:</b>	Offset Datum

Offset Design													Offset Site Error:	0.0 ft
Survey Program: 0-MWD													Offset Well Error:	0.0 ft
Reference		Offset		Semi Major Axis			Distance							Warning
Measured Depth (ft)	Vertical Depth (ft)	Measured Depth (ft)	Vertical Depth (ft)	Reference (ft)	Offset (ft)	Highside Toolface (°)	Offset Wellbore Centre +N/-S (ft)	+E/-W (ft)	Between Centres (ft)	Between Ellipses (ft)	Minimum Separation (ft)	Separation Factor		
0.0	0.0	0.0	0.0	0.0	0.0	168.61	-66.3	13.4	67.6					
100.0	100.0	99.0	99.0	0.1	0.1	168.61	-66.3	13.4	67.6	67.4	0.22	302.437		
200.0	200.0	199.0	199.0	0.3	0.3	168.61	-66.3	13.4	67.6	67.0	0.67	100.645		
300.0	300.0	299.0	299.0	0.6	0.6	168.61	-66.3	13.4	67.6	66.5	1.12	60.306		
400.0	400.0	399.0	399.0	0.8	0.8	168.61	-66.3	13.4	67.6	66.1	1.57	43.051 CC, ES		
500.0	500.0	499.0	499.0	1.0	1.0	-154.55	-66.3	13.4	69.2	67.2	2.02	34.239		
600.0	599.8	598.8	598.8	1.2	1.2	-156.26	-66.3	13.4	74.0	71.5	2.47	29.899		
700.0	699.5	698.5	698.5	1.5	1.5	-158.65	-66.3	13.4	82.0	79.1	2.93	27.999		
800.0	798.7	797.7	797.7	1.7	1.7	-161.29	-66.3	13.4	93.5	90.1	3.39	27.603		
900.0	897.7	896.7	896.7	2.0	1.9	-163.68	-66.3	13.4	106.7	102.9	3.84	27.771		
1,000.0	996.8	995.8	995.8	2.4	2.1	-165.54	-66.3	13.4	120.1	115.8	4.30	27.924		
1,100.0	1,095.8	1,094.8	1,094.8	2.7	2.3	-167.02	-66.3	13.4	133.5	128.8	4.76	28.061		
1,200.0	1,194.8	1,193.8	1,193.8	3.0	2.6	-168.23	-66.3	13.4	147.1	141.9	5.22	28.182		
1,300.0	1,293.9	1,298.3	1,298.3	3.3	2.8	-169.38	-64.7	12.8	159.1	153.4	5.69	27.977		
1,400.0	1,392.9	1,403.8	1,403.6	3.6	3.0	-170.61	-59.4	11.2	167.6	161.4	6.16	27.226		
1,500.0	1,492.0	1,509.8	1,509.2	4.0	3.3	-171.97	-50.4	8.3	172.5	165.9	6.63	26.029		
1,600.0	1,591.0	1,616.0	1,614.5	4.3	3.5	-173.54	-37.6	4.2	173.9	166.8	7.10	24.481		
1,700.0	1,690.0	1,722.0	1,719.1	4.6	3.8	-175.41	-21.1	-1.1	171.9	164.3	7.59	22.654		
1,800.0	1,789.1	1,827.7	1,822.7	5.0	4.2	-177.71	-1.1	-7.5	166.5	158.4	8.08	20.607		
1,900.0	1,888.1	1,932.6	1,924.7	5.3	4.5	179.39	22.4	-15.1	157.9	149.3	8.58	18.387		
2,000.0	1,987.1	2,036.7	2,024.8	5.7	4.9	175.59	49.2	-23.7	146.3	137.2	9.12	16.036		
2,100.0	2,086.2	2,137.2	2,120.7	6.0	5.4	170.67	78.0	-32.9	132.8	123.0	9.72	13.663		
2,200.0	2,185.2	2,235.5	2,214.4	6.3	5.9	164.73	106.4	-42.0	120.0	109.6	10.40	11.538		
2,300.0	2,284.2	2,333.9	2,308.1	6.7	6.4	157.49	134.9	-51.1	108.9	97.6	11.23	9.690		
2,400.0	2,383.3	2,432.2	2,401.7	7.0	6.9	148.83	163.3	-60.2	99.8	87.6	12.26	8.142		
2,500.0	2,482.3	2,530.5	2,495.4	7.3	7.4	138.77	191.8	-69.4	93.6	80.1	13.49	6.935		
2,600.0	2,581.3	2,628.8	2,589.1	7.7	8.0	127.71	220.2	-78.5	90.6	75.7	14.84	6.105		
2,631.9	2,613.0	2,660.2	2,619.0	7.8	8.2	124.07	229.3	-81.4	90.4	75.1	15.27	5.920		
2,700.0	2,680.4	2,727.1	2,682.7	8.0	8.5	116.37	248.7	-87.6	91.2	75.1	16.15	5.649		
2,800.0	2,779.4	2,825.4	2,776.4	8.4	9.1	105.60	277.1	-96.7	95.5	78.2	17.30	5.519		
2,900.0	2,878.5	2,923.8	2,870.1	8.7	9.7	96.02	305.6	-105.8	102.8	84.6	18.22	5.644		
3,000.0	2,977.5	3,022.1	2,963.7	9.0	10.2	87.88	334.0	-115.0	112.7	93.7	18.95	5.947		
3,100.0	3,076.5	3,120.4	3,057.4	9.4	10.8	81.14	362.5	-124.1	124.5	104.9	19.55	6.366		
3,200.0	3,175.6	3,218.7	3,151.1	9.7	11.4	75.60	390.9	-133.2	137.7	117.6	20.08	6.857		
3,300.0	3,274.6	3,317.0	3,244.7	10.1	12.0	71.05	419.4	-142.3	151.9	131.4	20.57	7.387		
3,400.0	3,373.6	3,415.3	3,338.4	10.4	12.5	67.30	447.8	-151.4	167.0	145.9	21.04	7.934		
3,500.0	3,472.7	3,513.6	3,432.1	10.7	13.1	64.17	476.3	-160.5	182.6	161.1	21.52	8.485		
3,600.0	3,571.7	3,612.0	3,525.7	11.1	13.7	61.53	504.8	-169.7	198.7	176.7	22.01	9.029		
3,700.0	3,670.7	3,710.3	3,619.4	11.4	14.3	59.29	533.2	-178.8	215.1	192.6	22.50	9.562		
3,800.0	3,769.8	3,808.6	3,713.1	11.8	14.9	57.37	561.7	-187.9	231.8	208.8	23.00	10.080		
3,900.0	3,868.8	3,906.9	3,806.7	12.1	15.5	55.71	590.1	-197.0	248.8	225.3	23.51	10.582		
4,000.0	3,967.8	4,005.2	3,900.4	12.5	16.1	54.26	618.6	-206.1	265.9	241.9	24.03	11.065		
4,100.0	4,066.9	4,103.5	3,994.1	12.8	16.7	52.99	647.0	-215.3	283.1	258.6	24.56	11.530		
4,200.0	4,165.9	4,201.9	4,087.7	13.1	17.3	51.86	675.5	-224.4	300.5	275.4	25.09	11.976		
4,300.0	4,265.0	4,300.2	4,181.4	13.5	17.9	50.86	703.9	-233.5	318.0	292.4	25.63	12.405		
4,400.0	4,364.0	4,398.5	4,275.0	13.8	18.4	49.96	732.4	-242.6	335.6	309.4	26.18	12.816		
4,500.0	4,463.0	4,496.8	4,368.7	14.2	19.0	49.15	760.8	-251.7	353.2	326.5	26.74	13.211		
4,600.0	4,562.1	4,595.1	4,462.4	14.5	19.6	48.41	789.3	-260.9	370.9	343.6	27.29	13.589		
4,700.0	4,661.1	4,693.4	4,556.0	14.8	20.2	47.75	817.7	-270.0	388.6	360.8	27.86	13.952		
4,800.0	4,760.1	4,791.7	4,649.7	15.2	20.8	47.14	846.2	-279.1	406.4	378.0	28.42	14.301		
4,900.0	4,859.2	4,890.1	4,743.4	15.5	21.4	46.58	874.6	-288.2	424.3	395.3	28.99	14.635		
5,000.0	4,958.2	4,988.4	4,837.0	15.9	22.0	46.07	903.1	-297.3	442.2	412.6	29.56	14.957		

CC - Min centre to center distance or convergent point, SF - min separation factor, ES - min ellipse separation

<b>Company:</b>	Synergy Resources	<b>Local Co-ordinate Reference:</b>	Well SRC Kelly Farms A-4-3NHZ
<b>Project:</b>	SEC.4-T5N-R66W	<b>TVD Reference:</b>	WELL @ 4767.0ft (Original Well Elev)
<b>Reference Site:</b>	SRC Kelly Farms Pad Sec.4-T5N-R66W	<b>MD Reference:</b>	WELL @ 4767.0ft (Original Well Elev)
<b>Site Error:</b>	0.0ft	<b>North Reference:</b>	True
<b>Reference Well:</b>	SRC Kelly Farms A-4-3NHZ	<b>Survey Calculation Method:</b>	Minimum Curvature
<b>Well Error:</b>	0.0ft	<b>Output errors are at</b>	2.00 sigma
<b>Reference Wellbore</b>	Wellbore #1	<b>Database:</b>	Landmark
<b>Reference Design:</b>	Plan #1 (5-20-13)	<b>Offset TVD Reference:</b>	Offset Datum

Offset Design												Offset Site Error:	0.0 ft
Survey Program: 0-MWDD												Offset Well Error:	0.0 ft
Reference		Offset		Semi Major Axis			Distance						Warning
Measured Depth (ft)	Vertical Depth (ft)	Measured Depth (ft)	Vertical Depth (ft)	Reference (ft)	Offset (ft)	Highside Toolface (°)	Offset Wellbore Centre +N/-S (ft)	+E/-W (ft)	Between Centres (ft)	Between Ellipses (ft)	Minimum Separation (ft)	Separation Factor	
5,100.0	5,057.2	5,086.7	4,930.7	16.2	22.6	45.59	931.6	-306.5	460.1	429.9	30.14	15.265	
5,200.0	5,156.3	5,184.9	5,024.3	16.5	23.2	45.26	960.0	-315.6	478.4	447.7	30.69	15.585	
5,300.0	5,255.8	5,282.6	5,117.4	16.8	23.8	44.85	988.3	-324.6	498.8	467.7	31.12	16.028	
5,400.0	5,355.6	5,379.6	5,209.8	17.0	24.4	44.27	1,016.3	-333.6	521.8	490.4	31.47	16.583	
5,500.0	5,455.5	5,475.8	5,301.4	17.1	25.0	43.54	1,044.2	-342.6	547.4	515.7	31.74	17.249	
5,600.0	5,555.5	5,586.2	5,407.0	17.2	25.6	4.91	1,075.1	-352.5	574.4	534.9	39.54	14.528	
5,700.0	5,655.5	5,705.6	5,522.4	17.4	26.1	3.75	1,104.3	-361.8	598.3	557.9	40.41	14.804	
5,800.0	5,755.5	5,827.5	5,641.4	17.6	26.6	2.84	1,129.3	-369.9	618.5	577.3	41.18	15.019	
5,900.0	5,855.5	5,951.5	5,763.4	17.7	26.9	2.15	1,149.8	-376.4	634.8	593.0	41.86	15.168	
6,000.0	5,955.5	6,077.1	5,888.0	17.9	27.3	1.65	1,165.5	-381.4	647.2	604.7	42.44	15.250	
6,100.0	6,055.5	6,204.0	6,014.4	18.0	27.5	1.33	1,176.0	-384.8	655.4	612.4	42.92	15.268	
6,200.0	6,155.5	6,331.6	6,141.9	18.2	27.7	1.18	1,181.1	-386.5	659.4	616.1	43.31	15.225	
6,300.0	6,255.5	6,444.3	6,254.5	18.4	27.8	1.16	1,181.7	-386.6	659.8	616.2	43.61	15.130	
6,350.0	6,305.5	6,494.3	6,304.5	18.4	27.9	-88.86	1,181.7	-386.6	659.8	625.6	34.22	19.281	
6,400.0	6,355.5	6,543.9	6,354.1	18.5	27.9	-88.83	1,181.7	-386.4	659.8	625.4	34.40	19.181	
6,500.0	6,455.0	6,642.1	6,451.8	18.6	28.0	-88.81	1,181.7	-377.0	659.8	625.2	34.60	19.069	
6,600.0	6,552.2	6,740.2	6,547.2	18.6	28.0	-88.81	1,181.7	-354.4	659.8	625.2	34.65	19.043	
6,700.0	6,645.3	6,838.3	6,638.6	18.6	28.0	-88.83	1,181.7	-319.0	659.8	625.2	34.60	19.072	
6,800.0	6,732.4	6,936.5	6,724.4	18.5	27.9	-88.88	1,181.7	-271.4	659.8	625.3	34.54	19.105	
6,900.0	6,811.8	7,034.8	6,803.0	18.4	27.9	-88.95	1,181.7	-212.4	659.8	625.2	34.60	19.071	
7,000.0	6,882.1	7,133.2	6,872.8	18.3	27.8	-89.04	1,181.7	-143.2	659.8	624.8	34.94	18.883	
7,100.0	6,941.7	7,231.8	6,932.6	18.2	27.7	-89.15	1,181.7	-64.9	659.7	624.0	35.74	18.461	
7,200.0	6,989.7	7,330.5	6,981.1	18.2	27.6	-89.27	1,181.7	21.0	659.7	622.6	37.12	17.773	
7,300.0	7,024.9	7,429.5	7,017.4	18.9	27.6	-89.41	1,181.7	112.9	659.7	620.5	39.15	16.850	
7,400.0	7,046.8	7,528.6	7,040.8	20.3	27.6	-89.56	1,181.7	209.2	659.6	617.8	41.80	15.780	
7,500.0	7,055.0	7,628.0	7,050.7	22.0	27.7	-89.72	1,181.7	308.0	659.6	614.7	44.96	14.671	
7,600.0	7,055.0	7,727.9	7,051.0	23.9	28.1	-89.74	1,181.7	407.9	659.6	611.1	48.54	13.588	
7,700.0	7,055.0	7,827.9	7,051.0	25.9	29.0	-89.74	1,181.7	507.9	659.6	607.1	52.48	12.570	
7,800.0	7,055.0	7,927.9	7,051.0	28.1	30.5	-89.74	1,181.7	607.9	659.6	602.9	56.69	11.635	
7,900.0	7,055.0	8,027.9	7,051.0	30.4	32.4	-89.74	1,181.7	707.9	659.6	598.4	61.13	10.790	
8,000.0	7,055.0	8,127.9	7,051.0	32.7	34.5	-89.74	1,181.7	807.9	659.6	593.8	65.75	10.031	
8,100.0	7,055.0	8,227.9	7,051.0	35.1	36.8	-89.74	1,181.7	907.9	659.6	589.0	70.52	9.353	
8,200.0	7,055.0	8,327.9	7,051.0	37.6	39.1	-89.74	1,181.7	1,007.9	659.5	584.1	75.40	8.747	
8,300.0	7,055.0	8,427.9	7,051.0	40.1	41.5	-89.74	1,181.7	1,107.9	659.5	579.2	80.38	8.205	
8,400.0	7,055.0	8,527.9	7,051.0	42.6	44.0	-89.74	1,181.7	1,207.9	659.5	574.1	85.44	7.720	
8,500.0	7,055.0	8,627.9	7,051.0	45.2	46.5	-89.74	1,181.7	1,307.9	659.5	568.9	90.56	7.283	
8,600.0	7,055.0	8,727.9	7,051.0	47.8	49.0	-89.74	1,181.7	1,407.9	659.5	563.8	95.74	6.889	
8,700.0	7,055.0	8,827.9	7,051.0	50.5	51.6	-89.74	1,181.7	1,507.9	659.5	558.5	100.96	6.532	
8,800.0	7,055.0	8,927.9	7,051.0	53.1	54.1	-89.74	1,181.7	1,607.9	659.5	553.2	106.23	6.208	
8,900.0	7,055.0	9,027.9	7,051.0	55.8	56.7	-89.74	1,181.7	1,707.9	659.5	547.9	111.53	5.913	
9,000.0	7,055.0	9,127.9	7,051.0	58.4	59.4	-89.74	1,181.7	1,807.9	659.4	542.6	116.86	5.643	
9,100.0	7,055.0	9,227.9	7,051.0	61.1	62.0	-89.74	1,181.7	1,907.9	659.4	537.2	122.21	5.396	
9,200.0	7,055.0	9,327.9	7,051.0	63.8	64.7	-89.74	1,181.7	2,007.9	659.4	531.8	127.59	5.168	
9,300.0	7,055.0	9,427.9	7,051.0	66.5	67.3	-89.74	1,181.7	2,107.9	659.4	526.4	132.99	4.959	
9,400.0	7,055.0	9,527.9	7,051.0	69.2	70.0	-89.74	1,181.7	2,207.9	659.4	521.0	138.40	4.764	
9,500.0	7,055.0	9,627.9	7,051.0	71.9	72.7	-89.74	1,181.7	2,307.9	659.4	515.6	143.83	4.585	
9,600.0	7,055.0	9,727.9	7,051.0	74.7	75.4	-89.74	1,181.7	2,407.9	659.4	510.1	149.27	4.417	
9,700.0	7,055.0	9,827.9	7,051.0	77.4	78.1	-89.74	1,181.7	2,507.9	659.4	504.6	154.73	4.261	
9,800.0	7,055.0	9,927.9	7,051.0	80.1	80.8	-89.74	1,181.7	2,607.9	659.4	499.2	160.20	4.116	
9,900.0	7,055.0	10,027.9	7,051.0	82.9	83.5	-89.74	1,181.7	2,707.9	659.3	493.7	165.67	3.980	
10,000.0	7,055.0	10,127.9	7,051.0	85.6	86.2	-89.74	1,181.7	2,807.9	659.3	488.2	171.16	3.852	
10,100.0	7,055.0	10,227.9	7,051.0	88.4	89.0	-89.74	1,181.7	2,907.9	659.3	482.7	176.65	3.732	

CC - Min centre to center distance or convergent point, SF - min separation factor, ES - min ellipse separation

<b>Company:</b>	Synergy Resources	<b>Local Co-ordinate Reference:</b>	Well SRC Kelly Farms A-4-3NHZ
<b>Project:</b>	SEC.4-T5N-R66W	<b>TVD Reference:</b>	WELL @ 4767.0ft (Original Well Elev)
<b>Reference Site:</b>	SRC Kelly Farms Pad Sec.4-T5N-R66W	<b>MD Reference:</b>	WELL @ 4767.0ft (Original Well Elev)
<b>Site Error:</b>	0.0ft	<b>North Reference:</b>	True
<b>Reference Well:</b>	SRC Kelly Farms A-4-3NHZ	<b>Survey Calculation Method:</b>	Minimum Curvature
<b>Well Error:</b>	0.0ft	<b>Output errors are at</b>	2.00 sigma
<b>Reference Wellbore</b>	Wellbore #1	<b>Database:</b>	Landmark
<b>Reference Design:</b>	Plan #1 (5-20-13)	<b>Offset TVD Reference:</b>	Offset Datum

Offset Design													Offset Site Error:	0.0 ft
Survey Program: 0-MWD													Offset Well Error:	0.0 ft
Reference		Offset		Semi Major Axis			Distance						Warning	
Measured Depth (ft)	Vertical Depth (ft)	Measured Depth (ft)	Vertical Depth (ft)	Reference (ft)	Offset (ft)	Highside Toolface (°)	Offset Wellbore Centre +N/-S (ft)	+E/-W (ft)	Between Centres (ft)	Between Ellipses (ft)	Minimum Separation (ft)	Separation Factor		
10,200.0	7,055.0	10,327.9	7,051.0	91.1	91.7	-89.74	1,181.7	3,007.9	659.3	477.2	182.15	3.620		
10,300.0	7,055.0	10,427.9	7,051.0	93.9	94.4	-89.74	1,181.7	3,107.9	659.3	471.6	187.66	3.513		
10,400.0	7,055.0	10,527.9	7,051.0	96.6	97.2	-89.74	1,181.7	3,207.9	659.3	466.1	193.18	3.413		
10,500.0	7,055.0	10,627.9	7,051.0	99.4	99.9	-89.74	1,181.7	3,307.9	659.3	460.6	198.70	3.318		
10,600.0	7,055.0	10,727.9	7,051.0	102.2	102.7	-89.74	1,181.7	3,407.9	659.3	455.0	204.22	3.228		
10,700.0	7,055.0	10,827.9	7,051.0	104.9	105.4	-89.74	1,181.7	3,507.9	659.3	449.5	209.75	3.143		
10,800.0	7,055.0	10,927.9	7,051.0	107.7	108.2	-89.74	1,181.7	3,607.9	659.2	444.0	215.29	3.062		
10,900.0	7,055.0	11,027.9	7,051.0	110.5	110.9	-89.74	1,181.7	3,707.9	659.2	438.4	220.83	2.985		
11,000.0	7,055.0	11,127.9	7,051.0	113.2	113.7	-89.74	1,181.7	3,807.9	659.2	432.9	226.37	2.912		
11,100.0	7,055.0	11,227.9	7,051.0	116.0	116.4	-89.74	1,181.7	3,907.9	659.2	427.3	231.91	2.842		
11,200.0	7,055.0	11,327.9	7,051.0	118.8	119.2	-89.74	1,181.7	4,007.9	659.2	421.7	237.46	2.776		
11,300.0	7,055.0	11,427.9	7,051.0	121.6	122.0	-89.74	1,181.7	4,107.9	659.2	416.2	243.02	2.713		
11,400.0	7,055.0	11,527.9	7,051.0	124.3	124.7	-89.74	1,181.7	4,207.9	659.2	410.6	248.57	2.652		
11,500.0	7,055.0	11,627.9	7,051.0	127.1	127.5	-89.74	1,181.7	4,307.9	659.2	405.0	254.13	2.594		
11,600.0	7,055.0	11,727.9	7,051.0	129.9	130.3	-89.74	1,181.7	4,407.9	659.2	399.5	259.69	2.538		
11,700.0	7,055.0	11,827.9	7,051.0	132.7	133.0	-89.74	1,181.7	4,507.9	659.1	393.9	265.25	2.485		
11,800.0	7,055.0	11,927.9	7,051.0	135.5	135.8	-89.74	1,181.7	4,607.9	659.1	388.3	270.82	2.434		
11,900.0	7,055.0	12,027.9	7,051.0	138.2	138.6	-89.74	1,181.7	4,707.9	659.1	382.7	276.38	2.385		
12,000.0	7,055.0	12,127.9	7,051.0	141.0	141.4	-89.74	1,181.7	4,807.9	659.1	377.2	281.95	2.338		
12,100.0	7,055.0	12,227.9	7,051.0	143.8	144.1	-89.74	1,181.7	4,907.9	659.1	371.6	287.52	2.292		
12,200.0	7,055.0	12,327.9	7,051.0	146.6	146.9	-89.74	1,181.7	5,007.9	659.1	366.0	293.10	2.249		
12,300.0	7,055.0	12,427.9	7,051.0	149.4	149.7	-89.74	1,181.7	5,107.9	659.1	360.4	298.67	2.207		
12,400.0	7,055.0	12,527.9	7,051.0	152.2	152.5	-89.74	1,181.7	5,207.9	659.1	354.8	304.25	2.166		
12,404.0	7,055.0	12,531.9	7,051.0	152.3	152.6	-89.74	1,181.7	5,211.9	659.1	354.6	304.47	2.165 SF		

<b>Company:</b>	Synergy Resources	<b>Local Co-ordinate Reference:</b>	Well SRC Kelly Farms A-4-3NHZ
<b>Project:</b>	SEC.4-T5N-R66W	<b>TVD Reference:</b>	WELL @ 4767.0ft (Original Well Elev)
<b>Reference Site:</b>	SRC Kelly Farms Pad Sec.4-T5N-R66W	<b>MD Reference:</b>	WELL @ 4767.0ft (Original Well Elev)
<b>Site Error:</b>	0.0ft	<b>North Reference:</b>	True
<b>Reference Well:</b>	SRC Kelly Farms A-4-3NHZ	<b>Survey Calculation Method:</b>	Minimum Curvature
<b>Well Error:</b>	0.0ft	<b>Output errors are at</b>	2.00 sigma
<b>Reference Wellbore</b>	Wellbore #1	<b>Database:</b>	Landmark
<b>Reference Design:</b>	Plan #1 (5-20-13)	<b>Offset TVD Reference:</b>	Offset Datum

Offset Design													Offset Site Error:	0.0 ft
Survey Program: 0-MWD													Offset Well Error:	0.0 ft
Measured Depth (ft)	Vertical Depth (ft)	Measured Depth (ft)	Vertical Depth (ft)	Reference (ft)	Offset (ft)	Semi Major Axis Highside Toolface (°)	Offset Wellbore Centre +N/-S (ft)	+E/-W (ft)	Between Centres (ft)	Between Ellipses (ft)	Minimum Separation (ft)	Separation Factor	Warning	
0.0	0.0	0.0	0.0	0.0	0.0	168.57	-44.1	8.9	45.0					
100.0	100.0	99.0	99.0	0.1	0.1	168.57	-44.1	8.9	45.0	44.7	0.22	201.075		
200.0	200.0	199.0	199.0	0.3	0.3	168.57	-44.1	8.9	45.0	44.3	0.67	66.913		
300.0	300.0	299.0	299.0	0.6	0.6	168.57	-44.1	8.9	45.0	43.8	1.12	40.094		
400.0	400.0	399.0	399.0	0.8	0.8	168.57	-44.1	8.9	45.0	43.4	1.57	28.622 CC, ES		
500.0	500.0	499.0	499.0	1.0	1.0	-154.89	-44.1	8.9	46.5	44.5	2.02	23.025		
600.0	599.8	598.8	598.8	1.2	1.2	-157.34	-44.1	8.9	51.3	48.9	2.47	20.748		
700.0	699.5	698.5	698.5	1.5	1.5	-160.52	-44.1	8.9	59.5	56.5	2.93	20.303		
800.0	798.7	797.7	797.7	1.7	1.7	-163.73	-44.1	8.9	71.1	67.7	3.38	20.999		
900.0	897.7	899.1	899.1	2.0	1.9	-165.73	-43.2	7.4	83.1	79.3	3.83	21.675		
1,000.0	996.8	1,001.2	1,001.0	2.4	2.1	-165.94	-40.5	2.8	92.3	88.1	4.29	21.535		
1,100.0	1,095.8	1,103.7	1,103.2	2.7	2.4	-164.87	-35.9	-4.9	98.7	93.9	4.76	20.731		
1,200.0	1,194.8	1,204.7	1,203.4	3.0	2.6	-162.94	-29.9	-15.1	102.8	97.5	5.25	19.569		
1,300.0	1,293.9	1,304.6	1,302.6	3.3	2.9	-161.08	-23.8	-25.4	106.8	101.0	5.76	18.539		
1,400.0	1,392.9	1,404.4	1,401.7	3.6	3.2	-159.36	-17.7	-35.7	110.9	104.6	6.28	17.656		
1,500.0	1,492.0	1,504.3	1,500.9	4.0	3.4	-157.77	-11.6	-45.9	115.1	108.3	6.81	16.891		
1,600.0	1,591.0	1,604.1	1,600.0	4.3	3.7	-156.29	-5.5	-56.2	119.4	112.0	7.36	16.227		
1,700.0	1,690.0	1,704.0	1,699.2	4.6	4.0	-154.91	0.6	-66.5	123.7	115.8	7.91	15.644		
1,800.0	1,789.1	1,803.9	1,798.3	5.0	4.3	-153.62	6.7	-76.8	128.2	119.7	8.47	15.130		
1,900.0	1,888.1	1,903.7	1,897.4	5.3	4.6	-152.42	12.8	-87.1	132.6	123.6	9.04	14.675		
2,000.0	1,987.1	2,003.6	1,996.6	5.7	4.9	-151.30	18.9	-97.4	137.2	127.6	9.61	14.270		
2,100.0	2,086.2	2,103.5	2,095.7	6.0	5.2	-150.25	25.0	-107.7	141.8	131.6	10.19	13.907		
2,200.0	2,185.2	2,203.3	2,194.9	6.3	5.5	-149.27	31.1	-117.9	146.4	135.6	10.78	13.581		
2,300.0	2,284.2	2,303.2	2,294.0	6.7	5.8	-148.35	37.2	-128.2	151.0	139.7	11.37	13.286		
2,400.0	2,383.3	2,403.0	2,393.2	7.0	6.1	-147.49	43.3	-138.5	155.8	143.8	11.96	13.019		
2,500.0	2,482.3	2,502.9	2,492.3	7.3	6.4	-146.67	49.4	-148.8	160.5	147.9	12.56	12.777		
2,600.0	2,581.3	2,602.8	2,591.5	7.7	6.8	-145.90	55.5	-159.1	165.3	152.1	13.16	12.556		
2,700.0	2,680.4	2,702.6	2,690.6	8.0	7.1	-145.18	61.6	-169.4	170.1	156.3	13.77	12.353		
2,800.0	2,779.4	2,802.5	2,789.7	8.4	7.4	-144.49	67.6	-179.7	174.9	160.5	14.37	12.167		
2,900.0	2,878.5	2,902.4	2,888.9	8.7	7.7	-143.84	73.7	-189.9	179.7	164.7	14.98	11.996		
3,000.0	2,977.5	3,002.2	2,988.0	9.0	8.0	-143.23	79.8	-200.2	184.6	169.0	15.59	11.838		
3,100.0	3,076.5	3,102.1	3,087.2	9.4	8.3	-142.65	85.9	-210.5	189.5	173.3	16.21	11.691		
3,200.0	3,175.6	3,201.9	3,186.3	9.7	8.6	-142.09	92.0	-220.8	194.4	177.6	16.82	11.555		
3,300.0	3,274.6	3,301.8	3,285.5	10.1	8.9	-141.57	98.1	-231.1	199.3	181.9	17.44	11.429		
3,400.0	3,373.6	3,401.7	3,384.6	10.4	9.2	-141.07	104.2	-241.4	204.3	186.2	18.06	11.311		
3,500.0	3,472.7	3,501.5	3,483.8	10.7	9.6	-140.59	110.3	-251.6	209.2	190.5	18.68	11.202		
3,600.0	3,571.7	3,601.4	3,582.9	11.1	9.9	-140.13	116.4	-261.9	214.2	194.9	19.30	11.099		
3,700.0	3,670.7	3,701.3	3,682.0	11.4	10.2	-139.70	122.5	-272.2	219.2	199.2	19.92	11.003		
3,800.0	3,769.8	3,801.1	3,781.2	11.8	10.5	-139.28	128.6	-282.5	224.1	203.6	20.54	10.912		
3,900.0	3,868.8	3,901.0	3,880.3	12.1	10.8	-138.89	134.7	-292.8	229.2	208.0	21.16	10.827		
4,000.0	3,967.8	4,000.8	3,979.5	12.5	11.1	-138.51	140.8	-303.1	234.2	212.4	21.79	10.747		
4,100.0	4,066.9	4,100.7	4,078.6	12.8	11.4	-138.14	146.9	-313.4	239.2	216.8	22.41	10.671		
4,200.0	4,165.9	4,200.6	4,177.8	13.1	11.8	-137.79	153.0	-323.6	244.2	221.2	23.04	10.600		
4,300.0	4,265.0	4,300.4	4,276.9	13.5	12.1	-137.46	159.1	-333.9	249.3	225.6	23.67	10.532		
4,400.0	4,364.0	4,400.3	4,376.0	13.8	12.4	-137.14	165.1	-344.2	254.3	230.0	24.29	10.468		
4,500.0	4,463.0	4,500.2	4,475.2	14.2	12.7	-136.83	171.2	-354.5	259.4	234.5	24.92	10.408		
4,600.0	4,562.1	4,600.0	4,574.3	14.5	13.0	-136.53	177.3	-364.8	264.4	238.9	25.55	10.350		
4,700.0	4,661.1	4,699.3	4,672.9	14.8	13.3	-136.26	183.4	-375.0	269.5	243.4	26.17	10.300		
4,800.0	4,760.1	4,795.3	4,768.4	15.2	13.5	-136.40	188.1	-383.0	275.5	248.9	26.66	10.337		
4,900.0	4,859.2	4,891.0	4,863.9	15.5	13.7	-137.12	191.3	-388.3	283.0	255.9	27.06	10.456		
5,000.0	4,958.2	4,986.2	4,959.1	15.9	13.9	-138.37	192.8	-390.8	291.9	264.5	27.39	10.657		
5,100.0	5,057.2	5,083.3	5,056.2	16.2	14.0	-140.03	192.9	-391.1	302.3	274.6	27.67	10.927		

CC - Min centre to center distance or convergent point, SF - min separation factor, ES - min ellipse separation

<b>Company:</b>	Synergy Resources	<b>Local Co-ordinate Reference:</b>	Well SRC Kelly Farms A-4-3NHZ
<b>Project:</b>	SEC.4-T5N-R66W	<b>TVD Reference:</b>	WELL @ 4767.0ft (Original Well Elev)
<b>Reference Site:</b>	SRC Kelly Farms Pad Sec.4-T5N-R66W	<b>MD Reference:</b>	WELL @ 4767.0ft (Original Well Elev)
<b>Site Error:</b>	0.0ft	<b>North Reference:</b>	True
<b>Reference Well:</b>	SRC Kelly Farms A-4-3NHZ	<b>Survey Calculation Method:</b>	Minimum Curvature
<b>Well Error:</b>	0.0ft	<b>Output errors are at</b>	2.00 sigma
<b>Reference Wellbore</b>	Wellbore #1	<b>Database:</b>	Landmark
<b>Reference Design:</b>	Plan #1 (5-20-13)	<b>Offset TVD Reference:</b>	Offset Datum

Offset Design												Offset Site Error:	0.0 ft
Survey Program: 0-MWD												Offset Well Error:	0.0 ft
Reference		Offset		Semi Major Axis			Distance						
Measured Depth (ft)	Vertical Depth (ft)	Measured Depth (ft)	Vertical Depth (ft)	Reference (ft)	Offset (ft)	Highside Toolface (°)	Offset Wellbore Centre +N/-S (ft)	+E/-W (ft)	Between Centres (ft)	Between Ellipses (ft)	Minimum Separation (ft)	Separation Factor	Warning
5,200.0	5,156.3	5,182.4	5,155.3	16.5	14.2	-141.66	192.9	-391.1	312.7	284.7	27.95	11.189	
5,300.0	5,255.8	5,281.9	5,254.8	16.8	14.4	-142.90	192.9	-391.1	320.8	292.6	28.20	11.378	
5,400.0	5,355.6	5,381.7	5,354.6	17.0	14.5	-143.68	192.9	-391.1	326.3	297.8	28.46	11.463	
5,500.0	5,455.5	5,481.6	5,454.5	17.1	14.7	-144.05	192.9	-391.1	328.9	300.2	28.74	11.446	
5,600.0	5,555.5	5,581.6	5,554.5	17.2	14.9	178.45	192.9	-391.1	329.2	300.3	28.91	11.385	
5,700.0	5,655.5	5,681.6	5,654.5	17.4	15.1	178.45	192.9	-391.1	329.2	299.9	29.28	11.243	
5,800.0	5,755.5	5,781.6	5,754.5	17.6	15.3	178.45	192.9	-391.1	329.2	299.6	29.65	11.104	
5,900.0	5,855.5	5,881.6	5,854.5	17.7	15.4	178.45	192.9	-391.1	329.2	299.2	30.01	10.968	
6,000.0	5,955.5	5,981.6	5,954.5	17.9	15.6	178.45	192.9	-391.1	329.2	298.8	30.39	10.834	
6,100.0	6,055.5	6,081.6	6,054.5	18.0	15.8	178.45	192.9	-391.1	329.2	298.4	30.76	10.703	
6,200.0	6,155.5	6,181.6	6,154.5	18.2	16.0	178.45	192.9	-391.1	329.2	298.1	31.13	10.574	
6,300.0	6,255.5	6,281.6	6,254.5	18.4	16.2	178.45	192.9	-391.1	329.2	297.7	31.51	10.447	
6,400.0	6,355.5	6,381.6	6,354.5	18.5	16.4	88.49	192.9	-391.1	329.2	297.1	32.07	10.264	
6,496.1	6,451.2	6,477.3	6,450.2	18.6	16.5	90.00	192.9	-391.1	329.1	296.6	32.51	10.123	
6,500.0	6,455.0	6,481.1	6,454.0	18.6	16.6	90.11	192.9	-391.1	329.1	296.5	32.53	10.116	
6,600.0	6,552.2	6,579.8	6,552.7	18.6	16.7	93.75	192.9	-389.6	329.8	296.8	33.07	9.974	
6,700.0	6,645.3	6,681.9	6,653.7	18.6	16.8	97.67	192.9	-375.7	332.2	298.8	33.42	9.942	
6,800.0	6,732.4	6,787.7	6,755.2	18.5	16.8	101.45	192.9	-346.3	336.1	302.6	33.53	10.025	
6,900.0	6,811.8	6,897.4	6,854.8	18.4	16.8	105.00	192.9	-300.3	341.2	307.8	33.45	10.200	
7,000.0	6,882.1	7,011.4	6,949.4	18.3	16.7	108.22	192.9	-237.1	347.1	313.8	33.34	10.412	
7,100.0	6,941.7	7,129.4	7,035.7	18.2	16.8	111.04	192.9	-156.7	353.3	319.8	33.42	10.571	
7,200.0	6,989.7	7,251.5	7,109.8	18.2	17.2	113.38	192.9	-59.8	359.1	325.1	33.99	10.565	
7,300.0	7,024.9	7,377.1	7,167.6	18.9	18.2	115.18	192.9	51.4	364.0	328.7	35.35	10.298	
7,400.0	7,046.8	7,505.4	7,205.8	20.3	19.7	116.40	192.9	173.7	367.6	330.0	37.63	9.768	
7,500.0	7,055.0	7,635.4	7,221.6	22.0	21.8	117.00	192.9	302.6	369.5	328.6	40.83	9.049	
7,600.0	7,055.0	7,740.7	7,222.0	23.9	23.7	117.04	192.9	407.9	369.6	325.4	44.19	8.363	
7,700.0	7,055.0	7,840.7	7,222.0	25.9	25.7	117.04	192.9	507.9	369.6	321.8	47.77	7.737	
7,800.0	7,055.0	7,940.7	7,222.0	28.1	27.9	117.04	192.9	607.9	369.6	318.0	51.59	7.164	
7,900.0	7,055.0	8,040.7	7,222.0	30.4	30.1	117.04	192.9	707.9	369.6	314.0	55.61	6.646	
8,000.0	7,055.0	8,140.7	7,222.0	32.7	32.5	117.04	192.9	807.9	369.6	309.8	59.79	6.182	
8,100.0	7,055.0	8,240.7	7,222.0	35.1	34.9	117.03	192.9	907.9	369.6	305.5	64.09	5.767	
8,200.0	7,055.0	8,340.7	7,222.0	37.6	37.3	117.03	192.9	1,007.9	369.6	301.1	68.50	5.396	
8,300.0	7,055.0	8,440.7	7,222.0	40.1	39.8	117.03	192.9	1,107.9	369.6	296.6	72.99	5.064	
8,400.0	7,055.0	8,540.7	7,222.0	42.6	42.4	117.03	192.9	1,207.9	369.6	292.1	77.55	4.766	
8,500.0	7,055.0	8,640.7	7,222.0	45.2	45.0	117.03	192.9	1,307.9	369.7	287.5	82.17	4.499	
8,600.0	7,055.0	8,740.7	7,222.0	47.8	47.6	117.03	192.9	1,407.9	369.7	282.8	86.83	4.257	
8,700.0	7,055.0	8,840.7	7,222.0	50.5	50.2	117.03	192.9	1,507.9	369.7	278.1	91.54	4.038	
8,800.0	7,055.0	8,940.7	7,222.0	53.1	52.8	117.03	192.9	1,607.9	369.7	273.4	96.28	3.840	
8,900.0	7,055.0	9,040.7	7,222.0	55.8	55.5	117.03	192.9	1,707.9	369.7	268.6	101.05	3.658	
9,000.0	7,055.0	9,140.7	7,222.0	58.4	58.2	117.03	192.9	1,807.9	369.7	263.9	105.85	3.493	
9,100.0	7,055.0	9,240.7	7,222.0	61.1	60.8	117.03	192.9	1,907.9	369.7	259.0	110.67	3.341	
9,200.0	7,055.0	9,340.7	7,222.0	63.8	63.5	117.03	192.9	2,007.9	369.7	254.2	115.51	3.201	
9,300.0	7,055.0	9,440.7	7,222.0	66.5	66.2	117.03	192.9	2,107.9	369.7	249.4	120.37	3.072	
9,400.0	7,055.0	9,540.7	7,222.0	69.2	69.0	117.02	192.9	2,207.9	369.7	244.5	125.25	2.952	
9,500.0	7,055.0	9,640.7	7,222.0	71.9	71.7	117.02	192.9	2,307.9	369.8	239.6	130.13	2.841	
9,600.0	7,055.0	9,740.7	7,222.0	74.7	74.4	117.02	192.9	2,407.9	369.8	234.7	135.03	2.738	
9,700.0	7,055.0	9,840.7	7,222.0	77.4	77.1	117.02	192.9	2,507.9	369.8	229.8	139.94	2.642	
9,800.0	7,055.0	9,940.7	7,222.0	80.1	79.9	117.02	192.9	2,607.9	369.8	224.9	144.86	2.553	
9,900.0	7,055.0	10,040.7	7,222.0	82.9	82.6	117.02	192.9	2,707.9	369.8	220.0	149.79	2.469	
10,000.0	7,055.0	10,140.7	7,222.0	85.6	85.4	117.02	192.9	2,807.9	369.8	215.1	154.73	2.390	
10,100.0	7,055.0	10,240.7	7,222.0	88.4	88.1	117.02	192.9	2,907.9	369.8	210.1	159.67	2.316	
10,200.0	7,055.0	10,340.7	7,222.0	91.1	90.9	117.02	192.9	3,007.9	369.8	205.2	164.63	2.246	

CC - Min centre to center distance or convergent point, SF - min separation factor, ES - min ellipse separation

<b>Company:</b>	Synergy Resources	<b>Local Co-ordinate Reference:</b>	Well SRC Kelly Farms A-4-3NHZ
<b>Project:</b>	SEC.4-T5N-R66W	<b>TVD Reference:</b>	WELL @ 4767.0ft (Original Well Elev)
<b>Reference Site:</b>	SRC Kelly Farms Pad Sec.4-T5N-R66W	<b>MD Reference:</b>	WELL @ 4767.0ft (Original Well Elev)
<b>Site Error:</b>	0.0ft	<b>North Reference:</b>	True
<b>Reference Well:</b>	SRC Kelly Farms A-4-3NHZ	<b>Survey Calculation Method:</b>	Minimum Curvature
<b>Well Error:</b>	0.0ft	<b>Output errors are at</b>	2.00 sigma
<b>Reference Wellbore</b>	Wellbore #1	<b>Database:</b>	Landmark
<b>Reference Design:</b>	Plan #1 (5-20-13)	<b>Offset TVD Reference:</b>	Offset Datum

<b>Offset Design</b>												<b>Offset Site Error:</b>	0.0 ft
Survey Program: 0-MWD												<b>Offset Well Error:</b>	0.0 ft
Reference		Offset		Semi Major Axis			Distance						
Measured Depth (ft)	Vertical Depth (ft)	Measured Depth (ft)	Vertical Depth (ft)	Reference (ft)	Offset (ft)	Highside Toolface (°)	Offset Wellbore Centre +N/-S (ft)	+E/-W (ft)	Between Centres (ft)	Between Ellipses (ft)	Minimum Separation (ft)	Separation Factor	Warning
10,300.0	7,055.0	10,440.7	7,222.0	93.9	93.6	117.02	192.9	3,107.9	369.8	200.3	169.58	2.181	
10,400.0	7,055.0	10,540.7	7,222.0	96.6	96.4	117.02	192.9	3,207.9	369.8	195.3	174.55	2.119	
10,500.0	7,055.0	10,640.7	7,222.0	99.4	99.2	117.02	192.9	3,307.9	369.9	190.3	179.51	2.060	
10,600.0	7,055.0	10,740.7	7,222.0	102.2	101.9	117.01	192.9	3,407.9	369.9	185.4	184.49	2.005	
10,700.0	7,055.0	10,840.7	7,222.0	104.9	104.7	117.01	192.9	3,507.9	369.9	180.4	189.46	1.952	
10,800.0	7,055.0	10,940.7	7,222.0	107.7	107.5	117.01	192.9	3,607.9	369.9	175.4	194.45	1.902	
10,900.0	7,055.0	11,040.7	7,222.0	110.5	110.2	117.01	192.9	3,707.9	369.9	170.5	199.43	1.855	
11,000.0	7,055.0	11,140.7	7,222.0	113.2	113.0	117.01	192.9	3,807.9	369.9	165.5	204.42	1.810	
11,100.0	7,055.0	11,240.7	7,222.0	116.0	115.8	117.01	192.9	3,907.9	369.9	160.5	209.41	1.766	
11,200.0	7,055.0	11,340.7	7,222.0	118.8	118.6	117.01	192.9	4,007.9	369.9	155.5	214.40	1.725	
11,300.0	7,055.0	11,440.7	7,222.0	121.6	121.3	117.01	192.9	4,107.9	369.9	150.5	219.40	1.686	
11,400.0	7,055.0	11,540.7	7,222.0	124.3	124.1	117.01	192.9	4,207.9	369.9	145.5	224.40	1.649	
11,500.0	7,055.0	11,640.7	7,222.0	127.1	126.9	117.01	192.9	4,307.9	370.0	140.6	229.40	1.613	
11,600.0	7,055.0	11,740.7	7,222.0	129.9	129.7	117.01	192.9	4,407.9	370.0	135.6	234.41	1.578	
11,700.0	7,055.0	11,840.7	7,222.0	132.7	132.5	117.01	192.9	4,507.9	370.0	130.6	239.41	1.545	
11,800.0	7,055.0	11,940.7	7,222.0	135.5	135.2	117.01	192.9	4,607.9	370.0	125.6	244.42	1.514	
11,900.0	7,055.0	12,040.7	7,222.0	138.2	138.0	117.00	192.9	4,707.9	370.0	120.6	249.43	1.483 Level 3	
12,000.0	7,055.0	12,140.7	7,222.0	141.0	140.8	117.00	192.9	4,807.9	370.0	115.6	254.45	1.454 Level 3	
12,100.0	7,055.0	12,240.7	7,222.0	143.8	143.6	117.00	192.9	4,907.9	370.0	110.6	259.46	1.426 Level 3	
12,200.0	7,055.0	12,340.7	7,222.0	146.6	146.4	117.00	192.9	5,007.9	370.0	105.6	264.48	1.399 Level 3	
12,300.0	7,055.0	12,440.7	7,222.0	149.4	149.2	117.00	192.9	5,107.9	370.0	100.5	269.49	1.373 Level 3	
12,349.5	7,055.0	12,490.2	7,222.0	150.8	150.6	117.00	192.9	5,157.4	370.0	98.1	271.97	1.361 Level 3	
12,400.0	7,055.0	12,515.0	7,222.0	152.2	151.3	117.00	192.9	5,182.2	370.9	97.1	273.87	1.354 Level 3, SF	
12,404.0	7,055.0	12,515.0	7,222.0	152.3	151.3	117.00	192.9	5,182.2	371.2	97.3	273.97	1.355 Level 3	



<b>Company:</b>	Synergy Resources	<b>Local Co-ordinate Reference:</b>	Well SRC Kelly Farms A-4-3NHZ
<b>Project:</b>	SEC.4-T5N-R66W	<b>TVD Reference:</b>	WELL @ 4767.0ft (Original Well Elev)
<b>Reference Site:</b>	SRC Kelly Farms Pad Sec.4-T5N-R66W	<b>MD Reference:</b>	WELL @ 4767.0ft (Original Well Elev)
<b>Site Error:</b>	0.0ft	<b>North Reference:</b>	True
<b>Reference Well:</b>	SRC Kelly Farms A-4-3NHZ	<b>Survey Calculation Method:</b>	Minimum Curvature
<b>Well Error:</b>	0.0ft	<b>Output errors are at</b>	2.00 sigma
<b>Reference Wellbore</b>	Wellbore #1	<b>Database:</b>	Landmark
<b>Reference Design:</b>	Plan #1 (5-20-13)	<b>Offset TVD Reference:</b>	Offset Datum

Offset Design													Offset Site Error:	0.0 ft
Survey Program: 0-MWD													Offset Well Error:	0.0 ft
Reference		Offset		Semi Major Axis			Distance							Warning
Measured Depth (ft)	Vertical Depth (ft)	Measured Depth (ft)	Vertical Depth (ft)	Reference (ft)	Offset (ft)	Highside Toolface (°)	Offset Wellbore Centre +N/-S (ft)	+E/-W (ft)	Between Centres (ft)	Between Ellipses (ft)	Minimum Separation (ft)	Separation Factor		
0.0	0.0	0.0	0.0	0.0	0.0	168.59	-110.4	22.3	112.6					
100.0	100.0	100.0	100.0	0.1	0.1	168.59	-110.4	22.3	112.6	112.4	0.22	500.981		
200.0	200.0	200.0	200.0	0.3	0.3	168.59	-110.4	22.3	112.6	111.9	0.67	166.994		
300.0	300.0	300.0	300.0	0.6	0.6	168.59	-110.4	22.3	112.6	111.5	1.12	100.196		
400.0	400.0	400.0	400.0	0.8	0.8	168.59	-110.4	22.3	112.6	111.0	1.57	71.569 CC, ES		
500.0	500.0	500.0	500.0	1.0	1.0	-154.32	-110.4	22.3	114.2	112.2	2.02	56.420		
600.0	599.8	599.8	599.8	1.2	1.2	-155.37	-110.4	22.3	118.9	116.4	2.48	48.021		
700.0	699.5	699.5	699.5	1.5	1.5	-156.95	-110.4	22.3	126.9	124.0	2.93	43.275		
800.0	798.7	798.7	798.7	1.7	1.7	-158.84	-110.4	22.3	138.2	134.8	3.39	40.752		
900.0	897.7	894.4	894.3	2.0	1.9	-160.24	-111.7	21.5	152.3	148.5	3.82	39.839		
1,000.0	996.8	989.4	989.3	2.4	2.1	-160.58	-115.8	19.2	168.7	164.4	4.25	39.713		
1,100.0	1,095.8	1,083.7	1,083.2	2.7	2.2	-160.15	-122.6	15.4	187.3	182.6	4.69	39.959		
1,200.0	1,194.8	1,180.9	1,180.0	3.0	2.4	-159.35	-131.4	10.5	207.3	202.2	5.15	40.287		
1,300.0	1,293.9	1,278.9	1,277.3	3.3	2.7	-158.68	-140.3	5.5	227.4	221.8	5.61	40.514		
1,400.0	1,392.9	1,376.8	1,374.7	3.6	2.9	-158.12	-149.2	0.5	247.5	241.4	6.09	40.646		
1,500.0	1,492.0	1,474.7	1,472.1	4.0	3.2	-157.64	-158.1	-4.5	267.6	261.1	6.57	40.713		
1,600.0	1,591.0	1,572.7	1,569.5	4.3	3.4	-157.23	-167.0	-9.5	287.8	280.7	7.06	40.737		
1,700.0	1,690.0	1,670.6	1,666.9	4.6	3.7	-156.87	-175.8	-14.5	308.0	300.4	7.56	40.738		
1,800.0	1,789.1	1,768.5	1,764.3	5.0	4.0	-156.56	-184.7	-19.5	328.1	320.1	8.06	40.708		
1,900.0	1,888.1	1,866.4	1,861.7	5.3	4.2	-156.28	-193.6	-24.5	348.3	339.8	8.56	40.676		
2,000.0	1,987.1	1,964.4	1,959.1	5.7	4.5	-156.04	-202.5	-29.5	368.5	359.4	9.07	40.634		
2,100.0	2,086.2	2,062.3	2,056.5	6.0	4.8	-155.82	-211.4	-34.5	388.7	379.1	9.58	40.587		
2,200.0	2,185.2	2,160.2	2,153.9	6.3	5.1	-155.62	-220.3	-39.5	408.9	398.8	10.09	40.537		
2,300.0	2,284.2	2,258.2	2,251.3	6.7	5.4	-155.44	-229.2	-44.5	429.1	418.5	10.60	40.487		
2,400.0	2,383.3	2,356.1	2,348.7	7.0	5.6	-155.27	-238.1	-49.5	449.3	438.2	11.11	40.436		
2,500.0	2,482.3	2,454.0	2,446.1	7.3	5.9	-155.12	-247.0	-54.5	469.5	457.9	11.63	40.385		
2,600.0	2,581.3	2,551.9	2,543.5	7.7	6.2	-154.99	-255.8	-59.5	489.7	477.6	12.14	40.336		
2,700.0	2,680.4	2,649.9	2,640.9	8.0	6.5	-154.86	-264.7	-64.4	510.0	497.3	12.66	40.287		
2,800.0	2,779.4	2,747.8	2,738.3	8.4	6.8	-154.74	-273.6	-69.4	530.2	517.0	13.18	40.241		
2,900.0	2,878.5	2,845.7	2,835.7	8.7	7.1	-154.63	-282.5	-74.4	550.4	536.7	13.69	40.195		
3,000.0	2,977.5	2,943.7	2,933.1	9.0	7.4	-154.53	-291.4	-79.4	570.6	556.4	14.21	40.151		
3,100.0	3,076.5	3,041.6	3,030.5	9.4	7.7	-154.44	-300.3	-84.4	590.8	576.1	14.73	40.109		
3,200.0	3,175.6	3,139.5	3,127.9	9.7	8.0	-154.35	-309.2	-89.4	611.1	595.8	15.25	40.068		
3,300.0	3,274.6	3,237.5	3,225.3	10.1	8.2	-154.27	-318.1	-94.4	631.3	615.5	15.77	40.029		
3,400.0	3,373.6	3,335.4	3,322.7	10.4	8.5	-154.19	-327.0	-99.4	651.5	635.2	16.29	39.991		
3,500.0	3,472.7	3,433.3	3,420.1	10.7	8.8	-154.12	-335.8	-104.4	671.8	654.9	16.81	39.955		
3,600.0	3,571.7	3,531.2	3,517.5	11.1	9.1	-154.05	-344.7	-109.4	692.0	674.6	17.33	39.920		
3,700.0	3,670.7	3,629.2	3,614.9	11.4	9.4	-153.99	-353.6	-114.4	712.2	694.4	17.86	39.886		
3,800.0	3,769.8	3,727.1	3,712.3	11.8	9.7	-153.93	-362.5	-119.4	732.4	714.1	18.38	39.854		
3,900.0	3,868.8	3,825.0	3,809.7	12.1	10.0	-153.87	-371.4	-124.4	752.7	733.8	18.90	39.823		
4,000.0	3,967.8	3,923.0	3,907.1	12.5	10.3	-153.82	-380.3	-129.4	772.9	753.5	19.42	39.793		
4,100.0	4,066.9	4,020.9	4,004.5	12.8	10.6	-153.77	-389.2	-134.4	793.1	773.2	19.95	39.764		
4,200.0	4,165.9	4,118.8	4,101.9	13.1	10.9	-153.72	-398.1	-139.3	813.4	792.9	20.47	39.736		
4,300.0	4,265.0	4,216.7	4,199.3	13.5	11.2	-153.67	-406.9	-144.3	833.6	812.6	20.99	39.709		
4,400.0	4,364.0	4,314.7	4,296.7	13.8	11.5	-153.63	-415.8	-149.3	853.8	832.3	21.52	39.684		
4,500.0	4,463.0	4,412.6	4,394.1	14.2	11.8	-153.58	-424.7	-154.3	874.1	852.0	22.04	39.659		
4,600.0	4,562.1	4,510.5	4,491.5	14.5	12.1	-153.54	-433.6	-159.3	894.3	871.8	22.56	39.634		
4,700.0	4,661.1	4,608.5	4,588.8	14.8	12.4	-153.50	-442.5	-164.3	914.6	891.5	23.09	39.611		
4,800.0	4,760.1	4,706.4	4,686.2	15.2	12.7	-153.47	-451.4	-169.3	934.8	911.2	23.61	39.589		
4,900.0	4,859.2	4,832.2	4,811.5	15.5	13.0	-153.51	-461.0	-174.7	953.8	929.7	24.16	39.485		
5,000.0	4,958.2	4,964.6	4,943.8	15.9	13.2	-153.77	-465.9	-177.5	969.5	944.8	24.66	39.320		
5,100.0	5,057.2	5,078.0	5,057.2	16.2	13.4	-154.16	-466.4	-177.7	982.3	957.1	25.11	39.111		

CC - Min centre to center distance or convergent point, SF - min separation factor, ES - min ellipse separation



Offset Design      SRC Kelly Farms Pad Sec.4-T5N-R66W - SRC Kelly Farms 22-4-3NHZ #2 - Wellbore #1 - Plan #1 (5-2)													Offset Site Error:	0.0 ft
Survey Program: 0-MWD													Offset Well Error:	0.0 ft
Reference		Offset		Semi Major Axis			Distance							
Measured Depth (ft)	Vertical Depth (ft)	Measured Depth (ft)	Vertical Depth (ft)	Reference (ft)	Offset (ft)	Highside Toolface (°)	Offset Wellbore Centre +N/-S (ft)	+E/-W (ft)	Between Centres (ft)	Between Ellipses (ft)	Minimum Separation (ft)	Separation Factor	Warning	
5,200.0	5,156.3	5,177.1	5,156.3	16.5	13.5	-154.55	-466.4	-177.7	994.3	968.8	25.55	38.909		
7,100.0	6,941.7	6,919.4	6,843.9	18.2	15.9	82.18	-466.4	28.8	998.2	966.5	31.69	31.500		
7,200.0	6,989.7	7,000.0	6,898.0	18.2	15.9	83.48	-466.4	88.5	995.2	962.3	32.88	30.269		
7,300.0	7,024.9	7,086.5	6,948.1	18.9	16.1	84.95	-466.4	158.9	992.6	957.9	34.66	28.634		
7,400.0	7,046.8	7,173.3	6,989.6	20.3	16.9	86.49	-466.4	235.1	990.4	953.4	37.01	26.764		
7,500.0	7,055.0	7,263.0	7,022.4	22.0	18.1	88.11	-466.4	318.5	989.0	949.1	39.88	24.798		
7,600.0	7,055.0	7,357.1	7,045.3	23.9	19.6	89.44	-466.4	409.7	988.5	945.2	43.26	22.851		
7,667.7	7,055.0	7,423.7	7,054.2	25.3	20.9	89.96	-466.3	475.7	988.4	942.6	45.84	21.565		
7,700.0	7,055.0	7,456.0	7,056.3	25.9	21.5	90.08	-466.3	507.9	988.5	941.4	47.10	20.986		
7,800.0	7,055.0	7,556.1	7,057.0	28.1	23.5	90.12	-466.3	607.9	988.5	937.2	51.29	19.274		
7,900.0	7,055.0	7,656.1	7,057.0	30.4	25.7	90.12	-466.3	707.9	988.5	932.8	55.70	17.745		
8,000.0	7,055.0	7,756.1	7,057.0	32.7	27.9	90.12	-466.3	807.9	988.5	928.1	60.33	16.386		
8,100.0	7,055.0	7,856.1	7,057.0	35.1	30.3	90.12	-466.3	907.9	988.5	923.4	65.10	15.183		
8,200.0	7,055.0	7,956.1	7,057.0	37.6	32.7	90.12	-466.3	1,007.9	988.5	918.5	70.01	14.119		
8,300.0	7,055.0	8,056.1	7,057.0	40.1	35.2	90.12	-466.3	1,107.9	988.5	913.5	75.02	13.177		
8,400.0	7,055.0	8,156.1	7,057.0	42.6	37.8	90.12	-466.3	1,207.9	988.5	908.4	80.10	12.340		
8,500.0	7,055.0	8,256.1	7,057.0	45.2	40.3	90.12	-466.3	1,307.9	988.5	903.2	85.26	11.594		
8,600.0	7,055.0	8,356.1	7,057.0	47.8	42.9	90.12	-466.3	1,407.9	988.5	898.0	90.47	10.927		
8,700.0	7,055.0	8,456.1	7,057.0	50.5	45.5	90.12	-466.3	1,507.9	988.5	892.8	95.72	10.327		
8,800.0	7,055.0	8,556.1	7,057.0	53.1	48.2	90.12	-466.3	1,607.9	988.5	887.5	101.02	9.786		
8,900.0	7,055.0	8,656.1	7,057.0	55.8	50.8	90.12	-466.3	1,707.9	988.5	882.2	106.34	9.296		
9,000.0	7,055.0	8,756.1	7,057.0	58.4	53.5	90.12	-466.3	1,807.9	988.5	876.8	111.70	8.850		
9,100.0	7,055.0	8,856.1	7,057.0	61.1	56.2	90.12	-466.3	1,907.9	988.5	871.5	117.08	8.443		
9,200.0	7,055.0	8,956.1	7,057.0	63.8	58.9	90.12	-466.3	2,007.9	988.6	866.1	122.48	8.071		
9,300.0	7,055.0	9,056.1	7,057.0	66.5	61.6	90.12	-466.3	2,107.9	988.6	860.7	127.90	7.729		
9,400.0	7,055.0	9,156.1	7,057.0	69.2	64.3	90.12	-466.3	2,207.9	988.6	855.2	133.34	7.414		
9,500.0	7,055.0	9,256.1	7,057.0	71.9	67.1	90.12	-466.3	2,307.9	988.6	849.8	138.79	7.123		
9,600.0	7,055.0	9,356.1	7,057.0	74.7	69.8	90.12	-466.3	2,407.9	988.6	844.3	144.25	6.853		
9,700.0	7,055.0	9,456.1	7,057.0	77.4	72.5	90.12	-466.3	2,507.9	988.6	838.9	149.72	6.603		
9,800.0	7,055.0	9,556.1	7,057.0	80.1	75.3	90.12	-466.3	2,607.9	988.6	833.4	155.21	6.369		
9,900.0	7,055.0	9,656.1	7,057.0	82.9	78.0	90.12	-466.3	2,707.9	988.6	827.9	160.70	6.152		
10,000.0	7,055.0	9,756.1	7,057.0	85.6	80.8	90.12	-466.2	2,807.9	988.6	822.4	166.20	5.948		
10,100.0	7,055.0	9,856.1	7,057.0	88.4	83.5	90.12	-466.2	2,907.9	988.6	816.9	171.71	5.757		
10,200.0	7,055.0	9,956.1	7,057.0	91.1	86.3	90.12	-466.2	3,007.9	988.6	811.4	177.23	5.578		
10,300.0	7,055.0	10,056.1	7,057.0	93.9	89.1	90.12	-466.2	3,107.9	988.6	805.9	182.75	5.410		
10,400.0	7,055.0	10,156.1	7,057.0	96.6	91.8	90.12	-466.2	3,207.9	988.6	800.4	188.28	5.251		
10,500.0	7,055.0	10,256.1	7,057.0	99.4	94.6	90.12	-466.2	3,307.9	988.6	794.8	193.81	5.101		
10,600.0	7,055.0	10,356.1	7,057.0	102.2	97.4	90.12	-466.2	3,407.9	988.6	789.3	199.35	4.959		
10,700.0	7,055.0	10,456.1	7,057.0	104.9	100.1	90.12	-466.2	3,507.9	988.7	783.8	204.89	4.825		
10,800.0	7,055.0	10,556.1	7,057.0	107.7	102.9	90.12	-466.2	3,607.9	988.7	778.2	210.44	4.698		
10,900.0	7,055.0	10,656.1	7,057.0	110.5	105.7	90.12	-466.2	3,707.9	988.7	772.7	215.98	4.577		
11,000.0	7,055.0	10,756.1	7,057.0	113.2	108.4	90.12	-466.2	3,807.9	988.7	767.1	221.54	4.463		
11,100.0	7,055.0	10,856.1	7,057.0	116.0	111.2	90.12	-466.2	3,907.9	988.7	761.6	227.09	4.354		
11,200.0	7,055.0	10,956.1	7,057.0	118.8	114.0	90.12	-466.2	4,007.9	988.7	756.0	232.65	4.250		
11,300.0	7,055.0	11,056.1	7,057.0	121.6	116.8	90.12	-466.2	4,107.9	988.7	750.5	238.21	4.150		
11,400.0	7,055.0	11,156.1	7,057.0	124.3	119.6	90.12	-466.2	4,207.9	988.7	744.9	243.78	4.056		
11,500.0	7,055.0	11,256.1	7,057.0	127.1	122.4	90.12	-466.2	4,307.9	988.7	739.4	249.34	3.965		
11,600.0	7,055.0	11,356.1	7,057.0	129.9	125.1	90.12	-466.2	4,407.9	988.7	733.8	254.91	3.879		
11,700.0	7,055.0	11,456.1	7,057.0	132.7	127.9	90.12	-466.2	4,507.9	988.7	728.2	260.48	3.796		
11,800.0	7,055.0	11,556.1	7,057.0	135.5	130.7	90.12	-466.2	4,607.9	988.7	722.7	266.05	3.716		
11,900.0	7,055.0	11,656.1	7,057.0	138.2	133.5	90.12	-466.2	4,707.9	988.7	717.1	271.63	3.640		
12,000.0	7,055.0	11,756.1	7,057.0	141.0	136.3	90.12	-466.2	4,807.9	988.7	711.5	277.20	3.567		

<b>Company:</b>	Synergy Resources	<b>Local Co-ordinate Reference:</b>	Well SRC Kelly Farms A-4-3NHZ
<b>Project:</b>	SEC.4-T5N-R66W	<b>TVD Reference:</b>	WELL @ 4767.0ft (Original Well Elev)
<b>Reference Site:</b>	SRC Kelly Farms Pad Sec.4-T5N-R66W	<b>MD Reference:</b>	WELL @ 4767.0ft (Original Well Elev)
<b>Site Error:</b>	0.0ft	<b>North Reference:</b>	True
<b>Reference Well:</b>	SRC Kelly Farms A-4-3NHZ	<b>Survey Calculation Method:</b>	Minimum Curvature
<b>Well Error:</b>	0.0ft	<b>Output errors are at</b>	2.00 sigma
<b>Reference Wellbore</b>	Wellbore #1	<b>Database:</b>	Landmark
<b>Reference Design:</b>	Plan #1 (5-20-13)	<b>Offset TVD Reference:</b>	Offset Datum

<b>Offset Design</b> SRC Kelly Farms Pad Sec.4-T5N-R66W - SRC Kelly Farms 22-4-3NHZ #2 - Wellbore #1 - Plan #1 (5-2												<b>Offset Site Error:</b>	0.0 ft
Survey Program: 0-MWD												<b>Offset Well Error:</b>	0.0 ft
Reference	Offset	Semi Major Axis			Distance								Warning
Measured Depth (ft)	Vertical Depth (ft)	Measured Depth (ft)	Vertical Depth (ft)	Reference (ft)	Offset (ft)	Highside Toolface (°)	Offset Wellbore Centre +N/-S (ft)	+E/-W (ft)	Between Centres (ft)	Between Ellipses (ft)	Minimum Separation (ft)	Separation Factor	
12,100.0	7,055.0	11,856.1	7,057.0	143.8	139.1	90.12	-466.2	4,907.9	988.7	706.0	282.78	3.497	
12,200.0	7,055.0	11,956.1	7,057.0	146.6	141.9	90.12	-466.1	5,007.9	988.8	700.4	288.36	3.429	
12,300.0	7,055.0	12,056.1	7,057.0	149.4	144.7	90.12	-466.1	5,107.9	988.8	694.8	293.94	3.364	
12,400.0	7,055.0	12,070.6	7,057.0	152.2	145.1	90.12	-466.1	5,122.5	992.5	695.3	297.13	3.340	
12,404.0	7,055.0	12,070.6	7,057.0	152.3	145.1	90.12	-466.1	5,122.5	992.8	695.6	297.25	3.340 SF	

SRC Kelly Farms Pad Sec.4-T5N-R66W - SRC Kelly Farms A-4-3CHZ - Wellbore #1 - Plan #1 (5-20-13)												Offset Site Error:	0.0 ft
Survey Program: 0-MWD												Offset Well Error:	0.0 ft
Reference		Offset		Semi Major Axis			Distance						
Measured Depth	Vertical Depth	Measured Depth	Vertical Depth	Reference	Offset	Highside Toolface	Offset Wellbore Centre		Between Centres	Between Ellipses	Minimum Separation	Separation Factor	Warning
(ft)	(ft)	(ft)	(ft)	(ft)	(ft)	(°)	+N/-S (ft)	+E/-W (ft)	(ft)	(ft)	(ft)		
0.0	0.0	0.0	0.0	0.0	0.0	168.66	-22.2	4.5	22.7				
100.0	100.0	100.0	100.0	0.1	0.1	168.66	-22.2	4.5	22.7	22.4	0.22	100.803	
200.0	200.0	200.0	200.0	0.3	0.3	168.66	-22.2	4.5	22.7	22.0	0.67	33.601	
300.0	300.0	300.0	300.0	0.6	0.6	168.66	-22.2	4.5	22.7	21.5	1.12	20.161	
400.0	400.0	400.0	400.0	0.8	0.8	168.66	-22.2	4.5	22.7	21.1	1.57	14.400 CC	
500.0	500.0	500.0	500.0	1.0	1.0	-155.68	-22.2	4.5	24.2	22.2	2.02	11.976	
600.0	599.8	599.8	599.8	1.2	1.2	-159.89	-22.2	4.5	29.1	26.6	2.48	11.746	
700.0	699.5	700.7	700.7	1.5	1.5	-164.37	-20.6	3.7	35.6	32.7	2.93	12.178	
800.0	798.7	801.8	801.7	1.7	1.7	-168.51	-15.8	1.5	42.2	38.9	3.37	12.520	
900.0	897.7	903.3	902.7	2.0	1.9	-172.19	-7.6	-2.2	47.1	43.3	3.83	12.315	
1,000.0	996.8	1,004.9	1,003.6	2.4	2.2	-175.75	3.8	-7.4	48.7	44.4	4.29	11.347	
1,100.0	1,095.8	1,106.5	1,103.9	2.7	2.5	-179.97	18.4	-14.1	46.9	42.2	4.76	9.852	
1,200.0	1,194.8	1,207.8	1,203.2	3.0	2.8	174.08	36.2	-22.3	42.1	36.8	5.26	8.002	
1,300.0	1,293.9	1,308.6	1,301.3	3.3	3.2	164.13	57.1	-31.8	34.7	28.8	5.83	5.947	
1,400.0	1,392.9	1,408.1	1,397.6	3.6	3.7	145.95	79.9	-42.3	26.9	20.3	6.65	4.048	
1,500.0	1,492.0	1,507.3	1,493.6	4.0	4.1	118.53	102.9	-52.8	23.5	15.7	7.87	2.989	
1,505.2	1,497.1	1,512.4	1,498.6	4.0	4.1	116.96	104.0	-53.3	23.5	15.6	7.94	2.964 ES	
1,600.0	1,591.0	1,606.5	1,589.6	4.3	4.6	90.43	125.8	-63.3	26.3	17.5	8.87	2.967	
1,700.0	1,690.0	1,705.7	1,685.5	4.6	5.1	71.23	148.7	-73.7	33.8	24.4	9.41	3.597	
1,800.0	1,789.1	1,804.9	1,781.5	5.0	5.6	59.75	171.6	-84.2	43.7	33.9	9.81	4.452	
1,900.0	1,888.1	1,904.1	1,877.4	5.3	6.1	52.65	194.5	-94.7	54.6	44.4	10.23	5.337	
2,000.0	1,987.1	2,003.4	1,973.4	5.7	6.6	47.96	217.5	-105.2	66.1	55.4	10.69	6.184	
2,100.0	2,086.2	2,102.6	2,069.4	6.0	7.1	44.67	240.4	-115.7	77.9	66.7	11.17	6.972	
2,200.0	2,185.2	2,201.8	2,165.3	6.3	7.6	42.25	263.3	-126.2	89.9	78.2	11.68	7.697	
2,300.0	2,284.2	2,301.0	2,261.3	6.7	8.1	40.40	286.2	-136.7	102.0	89.8	12.20	8.362	
2,400.0	2,383.3	2,400.2	2,357.3	7.0	8.6	38.94	309.1	-147.2	114.2	101.4	12.72	8.972	
2,500.0	2,482.3	2,499.5	2,453.2	7.3	9.1	37.77	332.1	-157.6	126.4	113.1	13.26	9.532	
2,600.0	2,581.3	2,598.7	2,549.2	7.7	9.6	36.80	355.0	-168.1	138.7	124.9	13.80	10.047	
2,700.0	2,680.4	2,697.9	2,645.1	8.0	10.1	35.99	377.9	-178.6	151.0	136.7	14.35	10.522	
2,800.0	2,779.4	2,797.1	2,741.1	8.4	10.7	35.31	400.8	-189.1	163.4	148.4	14.90	10.960	
2,900.0	2,878.5	2,896.3	2,837.1	8.7	11.2	34.72	423.7	-199.6	175.7	160.3	15.46	11.367	
3,000.0	2,977.5	2,995.5	2,933.0	9.0	11.7	34.20	446.7	-210.1	188.1	172.1	16.02	11.745	
3,100.0	3,076.5	3,094.8	3,029.0	9.4	12.2	33.75	469.6	-220.6	200.5	183.9	16.57	12.096	
3,200.0	3,175.6	3,194.0	3,125.0	9.7	12.7	33.36	492.5	-231.1	212.9	195.8	17.14	12.424	
3,300.0	3,274.6	3,293.2	3,220.9	10.1	13.2	33.00	515.4	-241.5	225.3	207.6	17.70	12.730	
3,400.0	3,373.6	3,392.4	3,316.9	10.4	13.8	32.69	538.3	-252.0	237.7	219.5	18.26	13.017	
3,500.0	3,472.7	3,491.6	3,412.8	10.7	14.3	32.40	561.3	-262.5	250.1	231.3	18.83	13.287	
3,600.0	3,571.7	3,590.8	3,508.8	11.1	14.8	32.14	584.2	-273.0	262.6	243.2	19.39	13.540	
3,700.0	3,670.7	3,690.1	3,604.8	11.4	15.3	31.91	607.1	-283.5	275.0	255.1	19.96	13.779	
3,800.0	3,769.8	3,789.3	3,700.7	11.8	15.9	31.69	630.0	-294.0	287.5	266.9	20.53	14.004	
3,900.0	3,868.8	3,888.5	3,796.7	12.1	16.4	31.50	652.9	-304.5	299.9	278.8	21.10	14.216	
4,000.0	3,967.8	3,987.7	3,892.7	12.5	16.9	31.32	675.9	-315.0	312.4	290.7	21.66	14.418	
4,100.0	4,066.9	4,086.9	3,988.6	12.8	17.4	31.15	698.8	-325.4	324.8	302.6	22.23	14.608	
4,200.0	4,165.9	4,186.2	4,084.6	13.1	17.9	30.99	721.7	-335.9	337.3	314.5	22.80	14.789	
4,300.0	4,265.0	4,285.4	4,180.5	13.5	18.5	30.85	744.6	-346.4	349.7	326.3	23.37	14.961	
4,400.0	4,364.0	4,385.2	4,277.1	13.8	19.0	30.72	767.7	-357.0	362.2	338.2	23.94	15.125	
4,500.0	4,463.0	4,498.5	4,387.2	14.2	19.4	30.69	791.7	-368.0	372.6	348.1	24.50	15.209	
4,600.0	4,562.1	4,612.5	4,499.1	14.5	19.8	30.88	811.8	-377.2	379.3	354.2	25.06	15.131	
4,700.0	4,661.1	4,726.8	4,612.0	14.8	20.2	31.27	828.0	-384.6	382.2	356.5	25.65	14.900	
4,800.0	4,760.1	4,841.2	4,725.6	15.2	20.4	31.88	840.0	-390.1	381.3	355.0	26.25	14.526	
4,900.0	4,859.2	4,955.2	4,839.3	15.5	20.6	32.73	847.9	-393.7	376.7	349.8	26.87	14.018	
5,000.0	4,958.2	5,068.5	4,952.5	15.9	20.8	33.83	851.6	-395.4	368.5	341.0	27.53	13.386	

COMPASS 2003.21 Build 46

<b>Company:</b>	Synergy Resources	<b>Local Co-ordinate Reference:</b>	Well SRC Kelly Farms A-4-3NHZ
<b>Project:</b>	SEC.4-T5N-R66W	<b>TVD Reference:</b>	WELL @ 4767.0ft (Original Well Elev)
<b>Reference Site:</b>	SRC Kelly Farms Pad Sec.4-T5N-R66W	<b>MD Reference:</b>	WELL @ 4767.0ft (Original Well Elev)
<b>Site Error:</b>	0.0ft	<b>North Reference:</b>	True
<b>Reference Well:</b>	SRC Kelly Farms A-4-3NHZ	<b>Survey Calculation Method:</b>	Minimum Curvature
<b>Well Error:</b>	0.0ft	<b>Output errors are at</b>	2.00 sigma
<b>Reference Wellbore</b>	Wellbore #1	<b>Database:</b>	Landmark
<b>Reference Design:</b>	Plan #1 (5-20-13)	<b>Offset TVD Reference:</b>	Offset Datum

Offset Design												Offset Site Error:	0.0 ft
Survey Program: 0-MWD												Offset Well Error:	0.0 ft
Reference		Offset		Semi Major Axis			Distance						Warning
Measured Depth (ft)	Vertical Depth (ft)	Measured Depth (ft)	Vertical Depth (ft)	Reference (ft)	Offset (ft)	Highside Toolface (°)	Offset Wellbore Centre +N/-S (ft)	+E/-W (ft)	Between Centres (ft)	Between Ellipses (ft)	Minimum Separation (ft)	Separation Factor	
5,100.0	5,057.2	5,173.2	5,057.2	16.2	20.9	35.12	852.0	-395.5	357.4	329.2	28.20	12.672	
5,200.0	5,156.3	5,272.3	5,156.3	16.5	21.0	36.32	852.0	-395.5	346.5	317.7	28.84	12.016	
5,300.0	5,255.8	5,371.8	5,255.8	16.8	21.1	37.24	852.0	-395.5	338.3	308.9	29.34	11.530	
5,400.0	5,355.6	5,471.6	5,355.6	17.0	21.3	37.88	852.0	-395.5	332.9	303.1	29.75	11.188	
5,500.0	5,455.5	5,571.5	5,455.5	17.1	21.4	38.20	852.0	-395.5	330.3	300.2	30.08	10.981	
5,565.0	5,520.5	5,636.5	5,520.5	17.2	21.5	38.27	852.0	-395.5	329.7	299.5	30.28	10.890	
5,600.0	5,555.5	5,671.5	5,555.5	17.2	21.5	0.77	852.0	-395.5	330.0	294.1	35.87	9.201	
5,700.0	5,655.5	5,771.5	5,655.5	17.4	21.6	0.77	852.0	-395.5	330.0	293.8	36.16	9.126	
5,800.0	5,755.5	5,871.5	5,755.5	17.6	21.7	0.77	852.0	-395.5	330.0	293.5	36.46	9.051	
5,900.0	5,855.5	5,971.5	5,855.5	17.7	21.9	0.77	852.0	-395.5	330.0	293.2	36.76	8.977	
6,000.0	5,955.5	6,071.5	5,955.5	17.9	22.0	0.77	852.0	-395.5	330.0	292.9	37.06	8.904	
6,100.0	6,055.5	6,171.5	6,055.5	18.0	22.1	0.77	852.0	-395.5	330.0	292.6	37.37	8.831	
6,200.0	6,155.5	6,271.5	6,155.5	18.2	22.3	0.77	852.0	-395.5	330.0	292.3	37.68	8.758	
6,300.0	6,255.5	6,371.5	6,255.5	18.4	22.4	0.77	852.0	-395.5	330.0	292.0	37.99	8.686	
6,400.0	6,355.5	6,471.5	6,355.5	18.5	22.5	-89.25	852.0	-395.5	330.0	296.7	33.25	9.924	
6,463.5	6,418.9	6,534.9	6,418.9	18.6	22.6	-90.00	852.0	-395.5	330.0	296.7	33.30	9.909	
6,500.0	6,455.0	6,571.0	6,455.0	18.6	22.7	-90.86	852.0	-395.5	330.0	296.8	33.25	9.925	
6,600.0	6,552.2	6,669.9	6,553.9	18.6	22.8	-94.49	852.0	-394.1	331.1	298.2	32.81	10.090	
6,700.0	6,645.3	6,772.7	6,655.6	18.6	22.8	-98.43	852.0	-380.3	333.8	301.5	32.26	10.347	
6,800.0	6,732.4	6,879.2	6,757.9	18.5	22.8	-102.20	852.0	-350.8	338.0	306.3	31.74	10.650	
6,900.0	6,811.8	6,989.8	6,858.2	18.4	22.8	-105.72	852.0	-304.5	343.4	312.1	31.31	10.966	
7,000.0	6,882.1	7,104.7	6,953.6	18.3	22.7	-108.90	852.0	-240.7	349.4	318.4	31.09	11.239	
7,100.0	6,941.7	7,223.7	7,040.3	18.2	22.6	-111.66	852.0	-159.4	355.7	324.4	31.23	11.389	
7,200.0	6,989.7	7,346.8	7,114.6	18.2	22.5	-113.92	852.0	-61.4	361.5	329.6	31.90	11.332	
7,300.0	7,024.9	7,473.3	7,172.3	18.9	22.3	-115.64	852.0	50.9	366.3	333.0	33.31	10.997	
7,400.0	7,046.8	7,602.4	7,209.9	20.3	22.3	-116.75	852.0	174.3	369.6	334.1	35.51	10.407	
7,500.0	7,055.0	7,733.1	7,224.8	22.0	23.1	-117.25	852.0	303.9	371.1	332.6	38.50	9.637	
7,600.0	7,055.0	7,837.1	7,225.0	23.9	24.9	-117.26	852.0	407.9	371.1	329.3	41.80	8.877	
7,700.0	7,055.0	7,937.1	7,225.0	25.9	26.9	-117.26	852.0	507.9	371.1	325.7	45.37	8.180	
7,800.0	7,055.0	8,037.1	7,225.0	28.1	29.0	-117.27	852.0	607.9	371.1	321.9	49.19	7.544	
7,900.0	7,055.0	8,137.1	7,225.0	30.4	31.2	-117.27	852.0	707.9	371.1	317.9	53.22	6.973	
8,000.0	7,055.0	8,237.1	7,225.0	32.7	33.5	-117.27	852.0	807.9	371.1	313.7	57.40	6.465	
8,100.0	7,055.0	8,337.1	7,225.0	35.1	35.9	-117.27	852.0	907.9	371.1	309.4	61.71	6.013	
8,200.0	7,055.0	8,437.1	7,225.0	37.6	38.3	-117.27	852.0	1,007.9	371.1	304.9	66.12	5.612	
8,300.0	7,055.0	8,537.1	7,225.0	40.1	40.8	-117.27	852.0	1,107.9	371.0	300.4	70.62	5.254	
8,400.0	7,055.0	8,637.1	7,225.0	42.6	43.3	-117.27	852.0	1,207.9	371.0	295.9	75.18	4.935	
8,500.0	7,055.0	8,737.1	7,225.0	45.2	45.9	-117.27	852.0	1,307.9	371.0	291.2	79.80	4.649	
8,600.0	7,055.0	8,837.1	7,225.0	47.8	48.5	-117.27	852.0	1,407.9	371.0	286.5	84.47	4.392	
8,700.0	7,055.0	8,937.1	7,225.0	50.5	51.1	-117.27	852.0	1,507.9	371.0	281.8	89.17	4.160	
8,800.0	7,055.0	9,037.1	7,225.0	53.1	53.7	-117.27	852.0	1,607.9	371.0	277.1	93.91	3.950	
8,900.0	7,055.0	9,137.1	7,225.0	55.8	56.3	-117.27	852.0	1,707.9	371.0	272.3	98.68	3.759	
9,000.0	7,055.0	9,237.1	7,225.0	58.4	59.0	-117.27	852.0	1,807.9	371.0	267.5	103.47	3.585	
9,100.0	7,055.0	9,337.1	7,225.0	61.1	61.6	-117.28	852.0	1,907.9	371.0	262.7	108.29	3.426	
9,200.0	7,055.0	9,437.1	7,225.0	63.8	64.3	-117.28	852.0	2,007.9	371.0	257.8	113.12	3.279	
9,300.0	7,055.0	9,537.1	7,225.0	66.5	67.0	-117.28	852.0	2,107.9	370.9	253.0	117.97	3.144	
9,400.0	7,055.0	9,637.1	7,225.0	69.2	69.7	-117.28	852.0	2,207.9	370.9	248.1	122.84	3.020	
9,500.0	7,055.0	9,737.1	7,225.0	71.9	72.4	-117.28	852.0	2,307.9	370.9	243.2	127.72	2.904	
9,600.0	7,055.0	9,837.1	7,225.0	74.7	75.1	-117.28	852.0	2,407.9	370.9	238.3	132.60	2.797	
9,700.0	7,055.0	9,937.1	7,225.0	77.4	77.9	-117.28	852.0	2,507.9	370.9	233.4	137.50	2.697	
9,800.0	7,055.0	10,037.1	7,225.0	80.1	80.6	-117.28	852.0	2,607.9	370.9	228.5	142.41	2.604	
9,900.0	7,055.0	10,137.1	7,225.0	82.9	83.3	-117.28	852.0	2,707.9	370.9	223.6	147.33	2.517	
10,000.0	7,055.0	10,237.1	7,225.0	85.6	86.0	-117.28	852.0	2,807.9	370.9	218.6	152.25	2.436	

CC - Min centre to center distance or convergent point, SF - min separation factor, ES - min ellipse separation

<b>Company:</b>	Synergy Resources	<b>Local Co-ordinate Reference:</b>	Well SRC Kelly Farms A-4-3NHZ
<b>Project:</b>	SEC.4-T5N-R66W	<b>TVD Reference:</b>	WELL @ 4767.0ft (Original Well Elev)
<b>Reference Site:</b>	SRC Kelly Farms Pad Sec.4-T5N-R66W	<b>MD Reference:</b>	WELL @ 4767.0ft (Original Well Elev)
<b>Site Error:</b>	0.0ft	<b>North Reference:</b>	True
<b>Reference Well:</b>	SRC Kelly Farms A-4-3NHZ	<b>Survey Calculation Method:</b>	Minimum Curvature
<b>Well Error:</b>	0.0ft	<b>Output errors are at</b>	2.00 sigma
<b>Reference Wellbore</b>	Wellbore #1	<b>Database:</b>	Landmark
<b>Reference Design:</b>	Plan #1 (5-20-13)	<b>Offset TVD Reference:</b>	Offset Datum

Offset Design													Offset Site Error:	0.0 ft
Survey Program: 0-MWD													Offset Well Error:	0.0 ft
Reference		Offset		Semi Major Axis			Distance						Warning	
Measured Depth (ft)	Vertical Depth (ft)	Measured Depth (ft)	Vertical Depth (ft)	Reference (ft)	Offset (ft)	Highside Toolface (°)	Offset Wellbore Centre +N/-S (ft)	+E/-W (ft)	Between Centres (ft)	Between Ellipses (ft)	Minimum Separation (ft)	Separation Factor		
10,100.0	7,055.0	10,337.1	7,225.0	88.4	88.8	-117.28	852.0	2,907.9	370.9	213.7	157.18	2.359		
10,200.0	7,055.0	10,437.1	7,225.0	91.1	91.5	-117.28	852.0	3,007.9	370.9	208.7	162.12	2.288		
10,300.0	7,055.0	10,537.1	7,225.0	93.9	94.3	-117.28	852.0	3,107.9	370.8	203.8	167.06	2.220		
10,400.0	7,055.0	10,637.1	7,225.0	96.6	97.0	-117.29	852.0	3,207.9	370.8	198.8	172.01	2.156		
10,500.0	7,055.0	10,737.1	7,225.0	99.4	99.8	-117.29	852.0	3,307.9	370.8	193.9	176.96	2.096		
10,600.0	7,055.0	10,837.1	7,225.0	102.2	102.5	-117.29	852.0	3,407.9	370.8	188.9	181.91	2.038		
10,700.0	7,055.0	10,937.1	7,225.0	104.9	105.3	-117.29	852.0	3,507.9	370.8	183.9	186.87	1.984		
10,800.0	7,055.0	11,037.1	7,225.0	107.7	108.1	-117.29	852.0	3,607.9	370.8	179.0	191.84	1.933		
10,900.0	7,055.0	11,137.1	7,225.0	110.5	110.8	-117.29	852.0	3,707.9	370.8	174.0	196.80	1.884		
11,000.0	7,055.0	11,237.1	7,225.0	113.2	113.6	-117.29	852.0	3,807.9	370.8	169.0	201.77	1.838		
11,100.0	7,055.0	11,337.1	7,225.0	116.0	116.4	-117.29	852.0	3,907.9	370.8	164.0	206.75	1.793		
11,200.0	7,055.0	11,437.1	7,225.0	118.8	119.1	-117.29	852.0	4,007.9	370.8	159.0	211.72	1.751		
11,300.0	7,055.0	11,537.1	7,225.0	121.6	121.9	-117.29	852.0	4,107.9	370.7	154.0	216.70	1.711		
11,400.0	7,055.0	11,637.1	7,225.0	124.3	124.7	-117.29	852.0	4,207.9	370.7	149.1	221.68	1.672		
11,500.0	7,055.0	11,737.1	7,225.0	127.1	127.5	-117.29	852.0	4,307.9	370.7	144.1	226.66	1.636		
11,600.0	7,055.0	11,837.1	7,225.0	129.9	130.2	-117.30	852.0	4,407.9	370.7	139.1	231.64	1.600		
11,700.0	7,055.0	11,937.1	7,225.0	132.7	133.0	-117.30	852.0	4,507.9	370.7	134.1	236.63	1.567		
11,800.0	7,055.0	12,037.1	7,225.0	135.5	135.8	-117.30	852.0	4,607.9	370.7	129.1	241.62	1.534		
11,900.0	7,055.0	12,137.1	7,225.0	138.2	138.6	-117.30	852.0	4,707.9	370.7	124.1	246.61	1.503		
12,000.0	7,055.0	12,237.1	7,225.0	141.0	141.3	-117.30	852.0	4,807.9	370.7	119.1	251.60	1.473 Level 3		
12,100.0	7,055.0	12,337.1	7,225.0	143.8	144.1	-117.30	852.0	4,907.9	370.7	114.1	256.59	1.445 Level 3		
12,200.0	7,055.0	12,437.1	7,225.0	146.6	146.9	-117.30	852.0	5,007.9	370.7	109.1	261.58	1.417 Level 3		
12,300.0	7,055.0	12,537.1	7,225.0	149.4	149.7	-117.30	852.0	5,107.9	370.6	104.1	266.58	1.390 Level 3		
12,400.0	7,055.0	12,637.1	7,225.0	152.2	152.5	-117.30	852.0	5,207.9	370.6	99.1	271.57	1.365 Level 3		
12,404.0	7,055.0	12,641.1	7,225.0	152.3	152.6	-117.30	852.0	5,211.9	370.6	98.9	271.77	1.364 Level 3, SF		

SRC Kelly Farms Pad Sec.4-T5N-R66W - SRC Northridge C-4-5CHZ - Wellbore #1 - Plan #1 (5-21-13)													Offset Site Error:	0.0 ft
Survey Program: 0-MWD													Offset Well Error:	0.0 ft
Reference		Offset		Semi Major Axis			Distance							
Measured Depth (ft)	Vertical Depth (ft)	Measured Depth (ft)	Vertical Depth (ft)	Reference (ft)	Offset (ft)	Highside Toolface (°)	Offset Wellbore Centre +N/-S (ft)	+E/-W (ft)	Between Centres (ft)	Between Ellipses (ft)	Minimum Separation (ft)	Separation Factor	Warning	
0.0	0.0	0.0	0.0	0.0	0.0	126.82	-36.1	48.2	60.2					
100.0	100.0	98.0	98.0	0.1	0.1	126.82	-36.1	48.2	60.2	59.9	0.22	270.376		
200.0	200.0	198.0	198.0	0.3	0.3	126.82	-36.1	48.2	60.2	59.5	0.67	89.825		
300.0	300.0	298.0	298.0	0.6	0.6	126.82	-36.1	48.2	60.2	59.0	1.12	53.750		
400.0	400.0	398.0	398.0	0.8	0.8	126.82	-36.1	48.2	60.2	58.6	1.57	38.349 CC, ES		
500.0	500.0	498.0	498.0	1.0	1.0	164.71	-36.1	48.2	61.8	59.8	2.02	30.635		
600.0	599.8	597.8	597.8	1.2	1.2	165.87	-36.1	48.2	66.9	64.4	2.47	27.094		
700.0	699.5	698.1	698.1	1.5	1.5	166.22	-34.5	48.8	74.9	72.0	2.92	25.668		
800.0	798.7	798.3	798.1	1.7	1.7	164.76	-29.8	50.9	85.5	82.1	3.37	25.352		
900.0	897.7	898.2	897.6	2.0	1.9	161.92	-21.9	54.4	96.9	93.1	3.84	25.251		
1,000.0	996.8	997.8	996.6	2.4	2.2	157.87	-10.8	59.3	108.1	103.7	4.34	24.914		
1,100.0	1,095.8	1,097.0	1,094.5	2.7	2.5	152.95	3.3	65.5	119.5	114.6	4.89	24.463		
1,200.0	1,194.8	1,195.5	1,191.2	3.0	2.8	147.45	20.4	73.0	131.8	126.3	5.49	24.011		
1,300.0	1,293.9	1,293.0	1,286.2	3.3	3.1	141.65	40.3	81.7	145.6	139.5	6.15	23.661		
1,400.0	1,392.9	1,389.3	1,379.4	3.6	3.6	135.80	62.9	91.6	161.5	154.7	6.87	23.498		
1,500.0	1,492.0	1,486.1	1,472.4	4.0	4.0	130.36	87.4	102.4	179.6	171.9	7.62	23.550		
1,600.0	1,591.0	1,583.1	1,565.6	4.3	4.5	125.90	111.9	113.2	198.9	190.5	8.38	23.747		
1,700.0	1,690.0	1,680.2	1,658.9	4.6	5.0	122.24	136.5	124.0	219.2	210.1	9.12	24.030		
1,800.0	1,789.1	1,777.2	1,752.1	5.0	5.5	119.20	161.1	134.7	240.3	230.4	9.86	24.362		
1,900.0	1,888.1	1,874.2	1,845.3	5.3	6.0	116.65	185.6	145.5	261.9	251.3	10.60	24.713		
2,000.0	1,987.1	1,971.2	1,938.6	5.7	6.5	114.48	210.2	156.3	283.9	272.6	11.33	25.067		
2,100.0	2,086.2	2,068.2	2,031.8	6.0	7.1	112.63	234.8	167.1	306.3	294.2	12.05	25.415		
2,200.0	2,185.2	2,165.3	2,125.1	6.3	7.6	111.03	259.3	177.9	328.9	316.1	12.77	25.752		
2,300.0	2,284.2	2,262.3	2,218.3	6.7	8.1	109.63	283.9	188.7	351.8	338.3	13.49	26.075		
2,400.0	2,383.3	2,359.3	2,311.5	7.0	8.6	108.41	308.5	199.5	374.8	360.6	14.21	26.382		
2,500.0	2,482.3	2,456.3	2,404.8	7.3	9.2	107.32	333.0	210.3	397.9	383.0	14.92	26.673		
2,600.0	2,581.3	2,553.3	2,498.0	7.7	9.7	106.36	357.6	221.1	421.2	405.6	15.63	26.949		
2,700.0	2,680.4	2,650.4	2,591.2	8.0	10.2	105.49	382.2	231.9	444.6	428.2	16.34	27.209		
2,800.0	2,779.4	2,747.4	2,684.5	8.4	10.8	104.72	406.8	242.7	468.1	451.0	17.05	27.454		
2,900.0	2,878.5	2,844.4	2,777.7	8.7	11.3	104.01	431.3	253.5	491.6	473.8	17.76	27.685		
3,000.0	2,977.5	2,941.4	2,870.9	9.0	11.8	103.37	455.9	264.2	515.2	496.7	18.46	27.903		
3,100.0	3,076.5	3,038.4	2,964.2	9.4	12.4	102.79	480.5	275.0	538.9	519.7	19.17	28.109		
3,200.0	3,175.6	3,135.5	3,057.4	9.7	12.9	102.25	505.0	285.8	562.6	542.7	19.88	28.304		
3,300.0	3,274.6	3,232.5	3,150.6	10.1	13.5	101.76	529.6	296.6	586.3	565.7	20.58	28.488		
3,400.0	3,373.6	3,336.7	3,250.9	10.4	14.0	101.30	555.7	308.1	609.9	588.6	21.28	28.663		
3,500.0	3,472.7	3,453.7	3,364.4	10.7	14.4	101.05	581.6	319.4	631.0	609.1	21.96	28.739		
3,600.0	3,571.7	3,572.1	3,480.4	11.1	14.9	101.10	603.4	329.1	649.1	626.5	22.63	28.680		
3,700.0	3,670.7	3,691.7	3,598.4	11.4	15.2	101.43	621.0	336.8	664.1	640.8	23.30	28.503		
3,800.0	3,769.8	3,812.0	3,717.8	11.8	15.5	102.03	634.2	342.6	676.0	652.1	23.95	28.225		
3,900.0	3,868.8	3,932.6	3,838.1	12.1	15.8	102.88	642.7	346.3	684.9	660.3	24.58	27.862		
4,000.0	3,967.8	4,053.2	3,958.5	12.5	16.0	104.00	646.7	348.0	690.8	665.6	25.19	27.423		
4,100.0	4,066.9	4,159.5	4,064.9	12.8	16.1	105.16	646.9	348.2	694.5	668.7	25.76	26.962		
4,200.0	4,165.9	4,258.5	4,163.9	13.1	16.2	106.25	646.9	348.2	698.3	672.0	26.31	26.544		
4,300.0	4,265.0	4,357.6	4,263.0	13.5	16.3	107.33	646.9	348.2	702.3	675.5	26.85	26.157		
4,400.0	4,364.0	4,456.6	4,362.0	13.8	16.4	108.39	646.9	348.2	706.6	679.2	27.39	25.799		
4,500.0	4,463.0	4,555.6	4,461.0	14.2	16.5	109.44	646.9	348.2	711.1	683.2	27.92	25.469		
4,600.0	4,562.1	4,654.7	4,560.1	14.5	16.7	110.48	646.9	348.2	715.9	687.4	28.45	25.165		
4,700.0	4,661.1	4,753.7	4,659.1	14.8	16.8	111.50	646.9	348.2	720.9	691.9	28.97	24.884		
4,800.0	4,760.1	4,852.8	4,758.1	15.2	16.9	112.51	646.9	348.2	726.1	696.6	29.49	24.626		
4,900.0	4,859.2	4,951.8	4,857.2	15.5	17.1	113.50	646.9	348.2	731.6	701.6	30.00	24.388		
5,000.0	4,958.2	5,050.8	4,956.2	15.9	17.2	114.48	646.9	348.2	737.3	706.8	30.50	24.169		
5,100.0	5,057.2	5,149.9	5,055.2	16.2	17.3	115.45	646.9	348.2	743.2	712.2	31.00	23.969		

COMPASS 2003.21 Build 46





<b>Company:</b>	Synergy Resources	<b>Local Co-ordinate Reference:</b>	Well SRC Kelly Farms A-4-3NHZ
<b>Project:</b>	SEC.4-T5N-R66W	<b>TVD Reference:</b>	WELL @ 4767.0ft (Original Well Elev)
<b>Reference Site:</b>	SRC Kelly Farms Pad Sec.4-T5N-R66W	<b>MD Reference:</b>	WELL @ 4767.0ft (Original Well Elev)
<b>Site Error:</b>	0.0ft	<b>North Reference:</b>	True
<b>Reference Well:</b>	SRC Kelly Farms A-4-3NHZ	<b>Survey Calculation Method:</b>	Minimum Curvature
<b>Well Error:</b>	0.0ft	<b>Output errors are at</b>	2.00 sigma
<b>Reference Wellbore</b>	Wellbore #1	<b>Database:</b>	Landmark
<b>Reference Design:</b>	Plan #1 (5-20-13)	<b>Offset TVD Reference:</b>	Offset Datum

Offset Design													Offset Site Error:	0.0 ft
Survey Program: 0-MWD													Offset Well Error:	0.0 ft
Reference		Offset		Semi Major Axis			Distance							Warning
Measured Depth (ft)	Vertical Depth (ft)	Measured Depth (ft)	Vertical Depth (ft)	Reference (ft)	Offset (ft)	Highside Toolface (°)	Offset Wellbore Centre +N/-S (ft)	+E/-W (ft)	Between Centres (ft)	Between Ellipses (ft)	Minimum Separation (ft)	Separation Factor		
0.0	0.0	0.0	0.0	0.0	0.0	137.93	-58.3	52.6	78.6					
100.0	100.0	98.0	98.0	0.1	0.1	137.93	-58.3	52.6	78.5	78.3	0.22	352.886		
200.0	200.0	198.0	198.0	0.3	0.3	137.93	-58.3	52.6	78.5	77.9	0.67	117.236		
300.0	300.0	298.0	298.0	0.6	0.6	137.93	-58.3	52.6	78.5	77.4	1.12	70.153		
400.0	400.0	398.0	398.0	0.8	0.8	137.93	-58.3	52.6	78.5	77.0	1.57	50.052 CC, ES		
500.0	500.0	498.0	498.0	1.0	1.0	175.49	-58.3	52.6	80.3	78.2	2.02	39.750		
600.0	599.8	597.8	597.8	1.2	1.2	175.76	-58.3	52.6	85.5	83.0	2.47	34.601		
700.0	699.5	697.5	697.5	1.5	1.5	176.14	-58.3	52.6	94.2	91.3	2.92	32.229		
800.0	798.7	796.7	796.7	1.7	1.7	176.57	-58.3	52.6	106.3	103.0	3.37	31.524		
900.0	897.7	896.5	896.4	2.0	1.9	176.19	-57.0	53.6	119.9	116.1	3.82	31.376		
1,000.0	996.8	996.2	996.1	2.4	2.1	174.41	-53.0	56.8	132.9	128.6	4.27	31.106		
1,100.0	1,095.8	1,095.8	1,095.3	2.7	2.4	171.59	-46.4	62.1	145.6	140.9	4.74	30.738		
1,200.0	1,194.8	1,194.8	1,193.6	3.0	2.6	168.09	-37.3	69.4	158.5	153.2	5.22	30.329		
1,300.0	1,293.9	1,293.5	1,291.5	3.3	2.9	164.92	-27.7	77.1	171.8	166.1	5.73	29.969		
1,400.0	1,392.9	1,392.1	1,389.4	3.6	3.1	162.21	-18.2	84.7	185.7	179.4	6.26	29.668		
1,500.0	1,492.0	1,490.8	1,487.3	4.0	3.4	159.87	-8.6	92.3	199.8	193.0	6.79	29.415		
1,600.0	1,591.0	1,589.5	1,585.2	4.3	3.7	157.85	0.9	100.0	214.3	207.0	7.34	29.200		
1,700.0	1,690.0	1,688.2	1,683.2	4.6	4.0	156.08	10.5	107.6	229.0	221.1	7.89	29.017		
1,800.0	1,789.1	1,786.9	1,781.1	5.0	4.3	154.53	20.0	115.3	243.9	235.4	8.45	28.859		
1,900.0	1,888.1	1,885.6	1,879.0	5.3	4.6	153.15	29.6	122.9	258.9	249.9	9.01	28.724		
2,000.0	1,987.1	1,984.2	1,976.9	5.7	4.9	151.93	39.1	130.6	274.0	264.5	9.58	28.607		
2,100.0	2,086.2	2,082.9	2,074.9	6.0	5.2	150.84	48.7	138.2	289.3	279.2	10.15	28.505		
2,200.0	2,185.2	2,181.6	2,172.8	6.3	5.5	149.85	58.3	145.9	304.7	294.0	10.72	28.416		
2,300.0	2,284.2	2,280.3	2,270.7	6.7	5.8	148.96	67.8	153.5	320.1	308.8	11.30	28.337		
2,400.0	2,383.3	2,379.0	2,368.6	7.0	6.1	148.15	77.4	161.1	335.6	323.8	11.87	28.268		
2,500.0	2,482.3	2,477.7	2,466.5	7.3	6.4	147.41	86.9	168.8	351.2	338.8	12.45	28.207		
2,600.0	2,581.3	2,576.3	2,564.5	7.7	6.7	146.74	96.5	176.4	366.8	353.8	13.03	28.152		
2,700.0	2,680.4	2,675.0	2,662.4	8.0	7.0	146.12	106.0	184.1	382.5	368.9	13.61	28.103		
2,800.0	2,779.4	2,773.7	2,760.3	8.4	7.3	145.55	115.6	191.7	398.2	384.0	14.19	28.059		
2,900.0	2,878.5	2,872.4	2,858.2	8.7	7.6	145.02	125.1	199.4	414.0	399.2	14.77	28.020		
3,000.0	2,977.5	2,971.1	2,956.2	9.0	7.9	144.53	134.7	207.0	429.7	414.4	15.36	27.984		
3,100.0	3,076.5	3,069.8	3,054.1	9.4	8.2	144.08	144.2	214.6	445.5	429.6	15.94	27.952		
3,200.0	3,175.6	3,168.4	3,152.0	9.7	8.5	143.65	153.8	222.3	461.4	444.8	16.52	27.922		
3,300.0	3,274.6	3,267.1	3,249.9	10.1	8.9	143.26	163.4	229.9	477.2	460.1	17.11	27.895		
3,400.0	3,373.6	3,365.8	3,347.8	10.4	9.2	142.89	172.9	237.6	493.1	475.4	17.69	27.871		
3,500.0	3,472.7	3,464.5	3,445.8	10.7	9.5	142.54	182.5	245.2	509.0	490.7	18.28	27.848		
3,600.0	3,571.7	3,563.2	3,543.7	11.1	9.8	142.22	192.0	252.9	524.9	506.0	18.86	27.827		
3,700.0	3,670.7	3,661.9	3,641.6	11.4	10.1	141.91	201.6	260.5	540.8	521.4	19.45	27.808		
3,800.0	3,769.8	3,760.5	3,739.5	11.8	10.4	141.62	211.1	268.1	556.8	536.7	20.03	27.790		
3,900.0	3,868.8	3,859.2	3,837.5	12.1	10.7	141.35	220.7	275.8	572.7	552.1	20.62	27.774		
4,000.0	3,967.8	3,957.9	3,935.4	12.5	11.0	141.09	230.2	283.4	588.7	567.5	21.21	27.759		
4,100.0	4,066.9	4,056.6	4,033.3	12.8	11.4	140.84	239.8	291.1	604.7	582.9	21.79	27.745		
4,200.0	4,165.9	4,155.3	4,131.2	13.1	11.7	140.61	249.3	298.7	620.6	598.3	22.38	27.731		
4,300.0	4,265.0	4,254.0	4,229.1	13.5	12.0	140.39	258.9	306.4	636.6	613.7	22.97	27.719		
4,400.0	4,364.0	4,352.6	4,327.1	13.8	12.3	140.18	268.4	314.0	652.6	629.1	23.55	27.708		
4,500.0	4,463.0	4,451.3	4,425.0	14.2	12.6	139.98	278.0	321.6	668.7	644.5	24.14	27.697		
4,600.0	4,562.1	4,550.0	4,522.9	14.5	12.9	139.79	287.6	329.3	684.7	659.9	24.73	27.687		
4,700.0	4,661.1	4,648.7	4,620.8	14.8	13.2	139.61	297.1	336.9	700.7	675.4	25.32	27.677		
4,800.0	4,760.1	4,756.6	4,728.1	15.2	13.5	139.51	306.6	344.5	716.3	690.4	25.88	27.680		
4,900.0	4,859.2	4,868.0	4,839.2	15.5	13.7	139.71	313.2	349.8	730.2	703.8	26.38	27.675		
5,000.0	4,958.2	4,979.6	4,950.7	15.9	13.9	140.20	316.4	352.4	742.4	715.6	26.85	27.654		
5,100.0	5,057.2	5,084.2	5,055.2	16.2	14.1	140.88	316.7	352.6	753.3	726.0	27.27	27.622		

CC - Min centre to center distance or convergent point, SF - min separation factor, ES - min ellipse separation

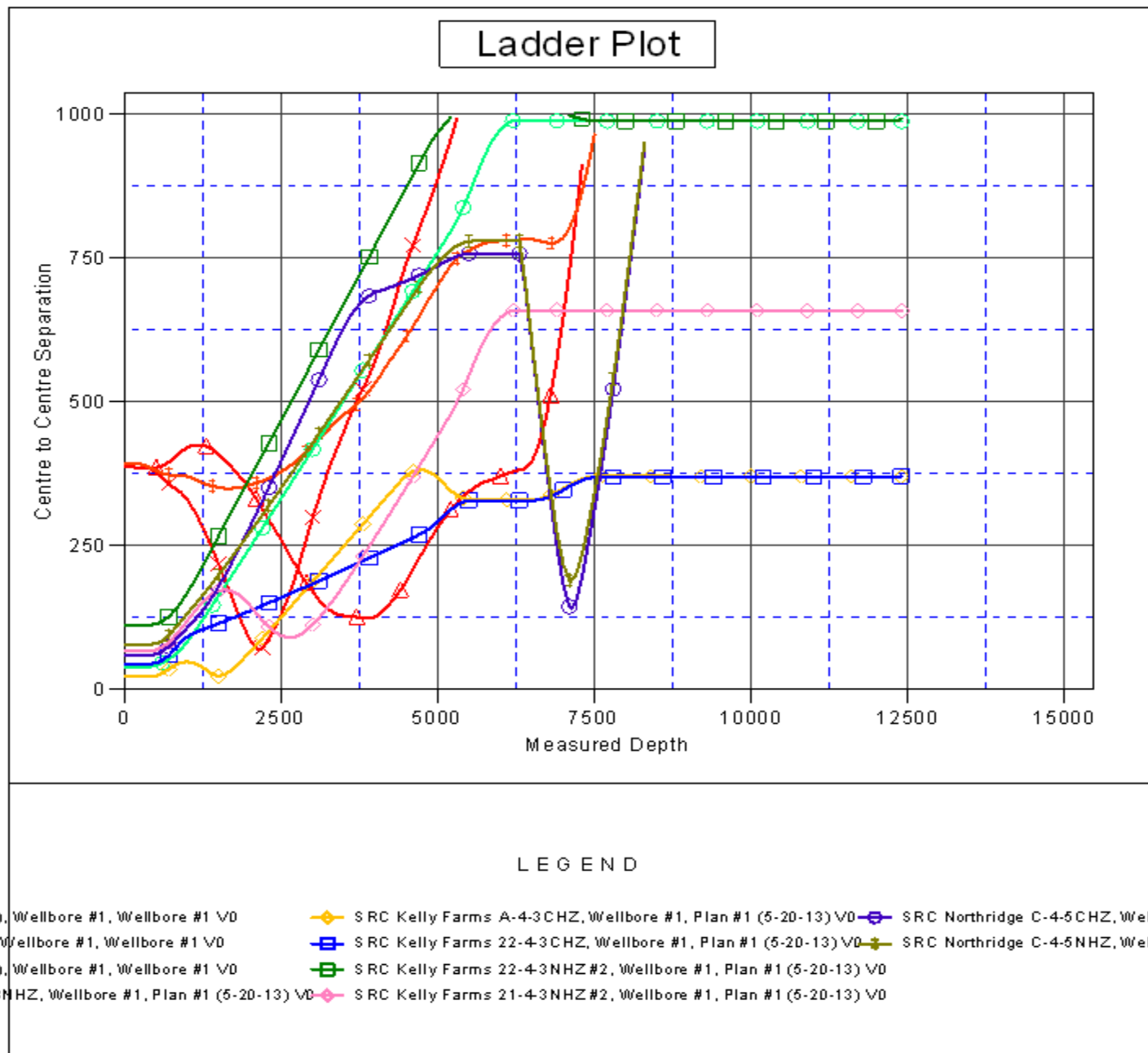


Offset Design      SRC Kelly Farms Pad Sec.4-T5N-R66W - SRC Northridge C-4-5NHZ - Wellbore #1 - Plan #1 (5-21-13)													Offset Site Error:      0.0 ft	
Survey Program:    0-MWD													Offset Well Error:      0.0 ft	
Reference		Offset		Semi Major Axis			Distance							Warning
Measured Depth (ft)	Vertical Depth (ft)	Measured Depth (ft)	Vertical Depth (ft)	Reference (ft)	Offset (ft)	Highside Toolface (°)	Offset Wellbore Centre +N/-S (ft)	+E/-W (ft)	Between Centres (ft)	Between Ellipses (ft)	Minimum Separation (ft)	Separation Factor		
5,200.0	5,156.3	5,183.3	5,154.3	16.5	14.3	141.58	316.7	352.6	763.8	736.0	27.71	27.564		
5,300.0	5,255.8	5,282.8	5,253.8	16.8	14.4	142.15	316.7	352.6	771.8	743.7	28.10	27.464		
5,400.0	5,355.6	5,382.5	5,353.6	17.0	14.6	142.52	316.7	352.6	777.2	748.7	28.47	27.299		
5,500.0	5,455.5	5,482.5	5,453.5	17.1	14.8	142.70	316.7	352.6	779.8	751.0	28.81	27.071		
5,600.0	5,555.5	5,582.5	5,553.5	17.2	15.0	105.26	316.7	352.6	780.1	751.2	28.96	26.940		
5,700.0	5,655.5	5,682.5	5,653.5	17.4	15.1	105.26	316.7	352.6	780.1	750.8	29.33	26.594		
5,800.0	5,755.5	5,782.5	5,753.5	17.6	15.3	105.26	316.7	352.6	780.1	750.4	29.71	26.255		
5,900.0	5,855.5	5,882.5	5,853.5	17.7	15.5	105.26	316.7	352.6	780.1	750.0	30.09	25.923		
6,000.0	5,955.5	5,982.5	5,953.5	17.9	15.7	105.26	316.7	352.6	780.1	749.6	30.48	25.598		
6,100.0	6,055.5	6,082.5	6,053.5	18.0	15.9	105.26	316.7	352.6	780.1	749.3	30.86	25.280		
6,200.0	6,155.5	6,182.5	6,153.5	18.2	16.0	105.26	316.7	352.6	780.1	748.9	31.24	24.968		
6,300.0	6,255.5	6,282.5	6,253.5	18.4	16.2	105.26	316.7	352.6	780.1	748.5	31.63	24.662		
6,400.0	6,355.5	7,514.9	7,033.0	18.5	23.1	97.59	348.4	-407.1	701.3	661.5	39.89	17.581		
6,500.0	6,455.0	7,505.6	7,033.0	18.6	22.9	120.21	348.1	-397.8	605.6	565.0	40.52	14.945		
6,600.0	6,552.2	7,482.6	7,033.0	18.6	22.5	130.78	347.1	-374.8	513.5	474.2	39.38	13.039		
6,700.0	6,645.3	7,417.1	7,031.0	18.6	21.2	129.48	344.4	-309.4	427.0	389.0	37.98	11.243		
6,800.0	6,732.4	7,345.0	7,022.0	18.5	20.0	124.31	341.4	-237.9	345.8	309.2	36.64	9.439		
6,900.0	6,811.8	7,280.8	7,007.9	18.4	19.0	117.69	338.8	-175.3	273.8	238.2	35.58	7.695		
7,000.0	6,882.1	7,220.8	6,989.8	18.3	18.1	108.54	336.4	-118.3	218.1	183.1	34.98	6.234		
7,100.0	6,941.7	7,163.4	6,968.1	18.2	17.4	96.40	334.2	-65.2	190.1	155.3	34.72	5.475		
7,127.4	6,956.1	7,148.0	6,961.5	18.2	17.3	92.60	333.6	-51.3	188.7	154.0	34.65	5.445 SF		
7,200.0	6,989.7	7,107.6	6,942.9	18.2	16.9	81.92	332.1	-15.5	197.9	163.8	34.09	5.806		
7,300.0	7,024.9	7,050.0	6,912.9	18.9	16.5	66.56	330.0	33.7	234.4	202.1	32.22	7.273		
7,400.0	7,046.8	7,000.0	6,883.8	20.3	16.5	54.33	328.3	74.3	285.4	255.6	29.78	9.583		
7,500.0	7,055.0	6,950.0	6,851.9	22.0	16.5	44.49	326.7	112.7	341.6	314.4	27.26	12.534		
7,600.0	7,055.0	6,900.0	6,817.3	23.9	16.5	39.87	325.2	148.8	401.8	375.2	26.60	15.103		
7,700.0	7,055.0	6,850.0	6,780.4	25.9	16.5	36.03	323.8	182.5	468.5	442.3	26.21	17.879		
7,800.0	7,055.0	6,813.3	6,751.9	28.1	16.5	33.49	322.9	205.5	540.7	514.4	26.32	20.539		
7,900.0	7,055.0	6,779.7	6,724.7	30.4	16.6	31.35	322.0	225.2	617.1	590.5	26.57	23.222		
8,000.0	7,055.0	6,750.0	6,699.9	32.7	16.6	29.62	321.3	241.6	696.9	669.9	26.96	25.848		
8,100.0	7,055.0	6,723.9	6,677.6	35.1	16.6	28.20	320.8	255.2	779.4	752.0	27.46	28.383		
8,200.0	7,055.0	6,700.0	6,656.8	37.6	16.6	26.99	320.3	266.9	864.2	836.2	28.03	30.837		
8,300.0	7,055.0	6,679.8	6,638.9	40.1	16.6	26.02	319.9	276.2	950.9	922.2	28.69	33.144		

**Company:** Synergy Resources  
**Project:** SEC.4-T5N-R66W  
**Reference Site:** SRC Kelly Farms Pad Sec.4-T5N-R66W  
**Site Error:** 0.0ft  
**Reference Well:** SRC Kelly Farms A-4-3NHZ  
**Well Error:** 0.0ft  
**Reference Wellbore:** Wellbore #1  
**Reference Design:** Plan #1 (5-20-13)

**Local Co-ordinate Reference:** Well SRC Kelly Farms A-4-3NHZ  
**TVD Reference:** WELL @ 4767.0ft (Original Well Elev)  
**MD Reference:** WELL @ 4767.0ft (Original Well Elev)  
**North Reference:** True  
**Survey Calculation Method:** Minimum Curvature  
**Output errors are at** 2.00 sigma  
**Database:** Landmark  
**Offset TVD Reference:** Offset Datum

Reference Depths are relative to WELL @ 4767.0ft (Original Well Elev) Coordinates are relative to: SRC Kelly Farms A-4-3NHZ  
 Offset Depths are relative to Offset Datum  
 Coordinate System is US State Plane 1983, Colorado Northern Zone  
 Central Meridian is -105.500000 °  
 Grid Convergence at Surface is: 0.46°



<b>Company:</b>	Synergy Resources	<b>Local Co-ordinate Reference:</b>	Well SRC Kelly Farms A-4-3NHZ
<b>Project:</b>	SEC.4-T5N-R66W	<b>TVD Reference:</b>	WELL @ 4767.0ft (Original Well Elev)
<b>Reference Site:</b>	SRC Kelly Farms Pad Sec.4-T5N-R66W	<b>MD Reference:</b>	WELL @ 4767.0ft (Original Well Elev)
<b>Site Error:</b>	0.0ft	<b>North Reference:</b>	True
<b>Reference Well:</b>	SRC Kelly Farms A-4-3NHZ	<b>Survey Calculation Method:</b>	Minimum Curvature
<b>Well Error:</b>	0.0ft	<b>Output errors are at</b>	2.00 sigma
<b>Reference Wellbore</b>	Wellbore #1	<b>Database:</b>	Landmark
<b>Reference Design:</b>	Plan #1 (5-20-13)	<b>Offset TVD Reference:</b>	Offset Datum

Reference Depths are relative to WELL @ 4767.0ft (Original Well Elev) Coordinates are relative to: SRC Kelly Farms A-4-3NHZ  
Offset Depths are relative to Offset Datum Coordinate System is US State Plane 1983, Colorado Northern Zone  
Central Meridian is -105.500000 ° Grid Convergence at Surface is: 0.46°

