



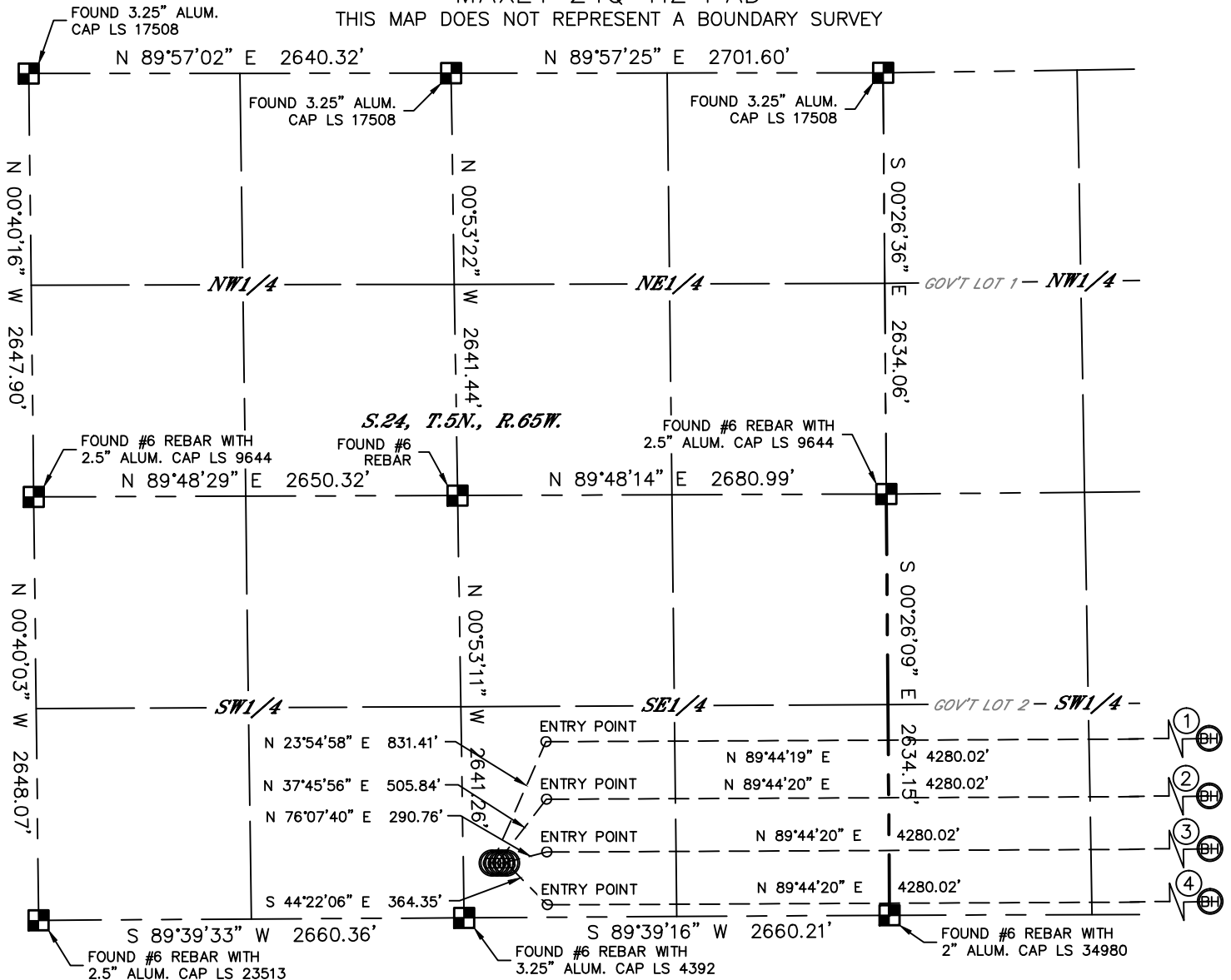
Lat40°, Inc. 1635 Foxtrail Drive, Suite 325 Loveland, CO 970-776-3321

# MULTI-WELL PLAN

MAXEY 24Q-HZ PAD

THIS MAP DOES NOT REPRESENT A BOUNDARY SURVEY

SECTION: 24  
TOWNSHIP: 5N  
RANGE: 65W

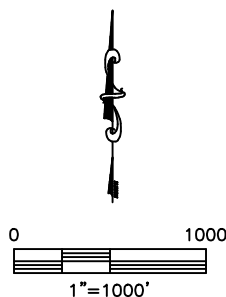


①  
-BOTTOM HOLE-  
MAXEY 24P-232  
1098' FSL  
2140' FWL  
LAT: 40.38036°N  
LONG: 104.59424°W

②  
-BOTTOM HOLE-  
MAXEY 24P-332  
738' FSL  
2140' FWL  
LAT: 40.37937°N  
LONG: 104.59424°W

③  
-BOTTOM HOLE-  
MAXEY 24Q-112  
408' FSL  
2140' FWL  
LAT: 40.37847°N  
LONG: 104.59425°W

④  
-BOTTOM HOLE-  
MAXEY 24Q-302  
78' FSL  
2140' FWL  
LAT: 40.37756°N  
LONG: 104.59425°W





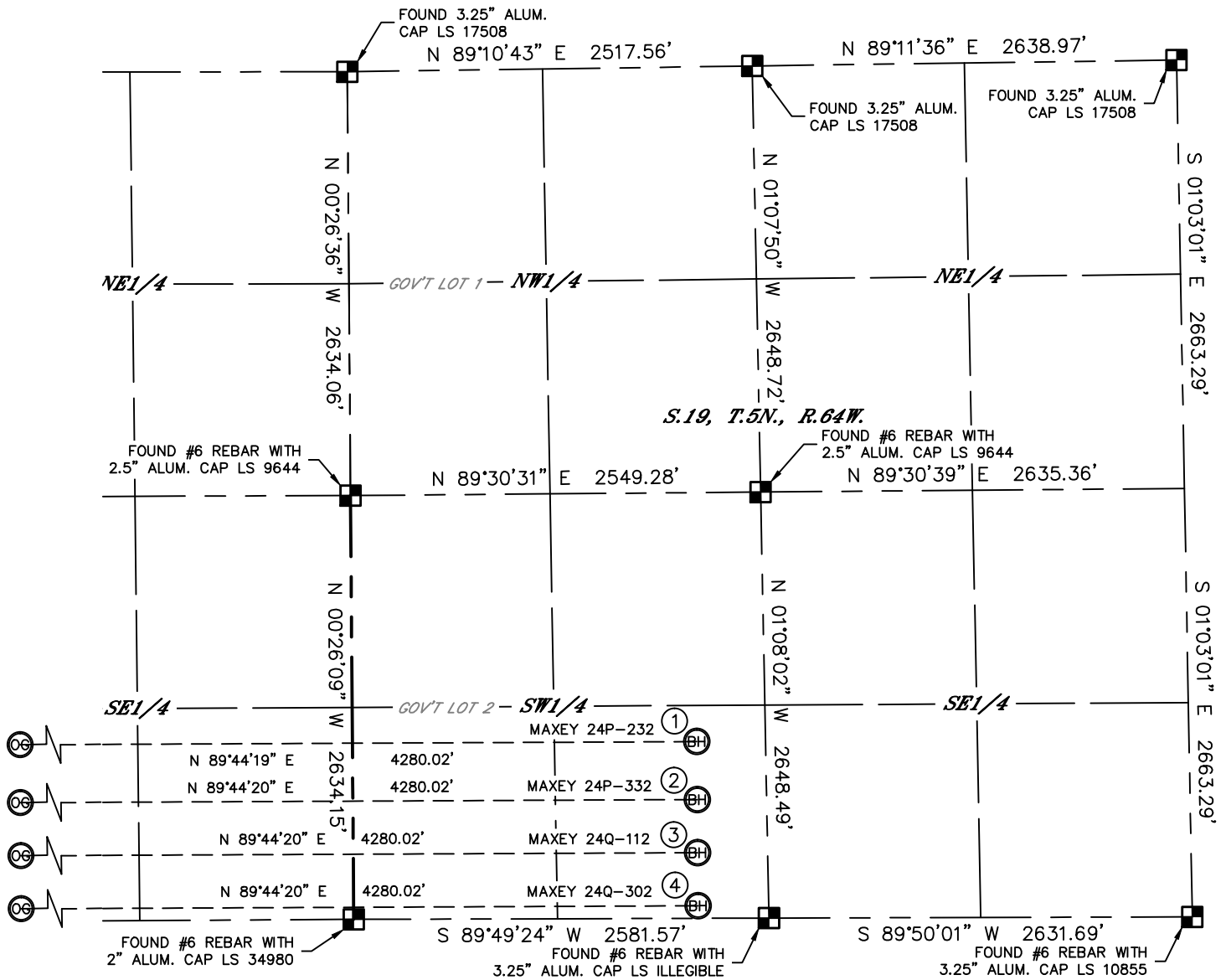
Lat40°, Inc. 1635 Foxtrail Drive, Suite 325 Loveland, CO 970-776-3321

## MULTI-WELL PLAN

MAXEY 24Q-HZ PAD

THIS MAP DOES NOT REPRESENT A BOUNDARY SURVEY

SECTION: 24  
TOWNSHIP: 5N  
RANGE: 65W

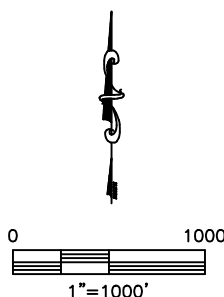


①  
-BOTTOM HOLE-  
MAXEY 24P-232  
1098' FSL  
2140' FWL  
LAT: 40.38036°N  
LONG: 104.59424°W

②  
-BOTTOM HOLE-  
MAXEY 24P-332  
738' FSL  
2140' FWL  
LAT: 40.37937°N  
LONG: 104.59424°W

③  
-BOTTOM HOLE-  
MAXEY 24Q-112  
408' FSL  
2140' FWL  
LAT: 40.37847°N  
LONG: 104.59425°W

④  
-BOTTOM HOLE-  
MAXEY 24Q-302  
78' FSL  
2140' FWL  
LAT: 40.37756°N  
LONG: 104.59425°W





Lat40°, Inc. 1635 Foxtrail Drive, Suite 325 Loveland, CO 970-776-3321

MULTI-WELL PLAN  
MAXEY 24Q-HZ PAD

SECTION: 24  
TOWNSHIP: 5N  
RANGE: 65W



DATE: rev 2/5/2013  
PROJECT#: 2013003