



RESERVOIR PERFORMANCE MONITOR

Baker Atlas

File No: CH072042	Company Well Field County	WPX ENERGY HOEPPLI RMF 333-36 RULLISON GARFIELD	State COLORADO
API No: 05045215470000			
56 GS 94W RMF 33-35 NABORS SSD 576	Location SHL: 2584' FNL & 2592' FEL BHL: 2156' FSL & 1779' FEL SEC 36 TWP 6S RGE 94W	Other Services BOND LOG	
Permanent Datum Log Measured From Drill Measured From	G.L. _____ Elevation 6528 ft K.B. _____ 26 ft Above P. D. KELLY BUSHING	Elevations KB 5554 ft DF GL 6528 ft	

Date	15/MAY/13	
Run	ONE	
Service Order	575077	
Depth Driller	8868 ft	
Depth Logger	8865 ft	
Bottom Logged Interval	8855 ft	
Top Logged Interval	4800 ft	
Time Started	12:00	
Time Finished	19:30	
Operator Rig Time	7.5	
Type of Fluid in Hole	WATER	
Fluid Density	N/A	
Salinity	N/A	
Fluid Level	78 ft	
Logged Cement Top	N/A	
Wellhead Pressure	0 psi	
Maximum Hole Deviation	N/A	
Nominal Logging Speed	10 fpm	
Maximum Recorded Temperature	241 degF	
Reference Log	BAKER HUGHES BOND LOG	
Reference Log Date	15/MAY/13	
Equipment No.	4271	GRAND JUNCTION
Recorded By	M. KINSEL	9721
Witnessed By	MR. BOB CADY	GRAND JUNCTION

- FOLD HERE

In making interpretations of logs, our employees will give the customer the benefit of their best judgement. But since all interpretations are opinions based on inferences from electrical or other measurements, we cannot, and we do not guarantee the accuracy or correctness of any interpretation. We shall not be liable or responsible for any loss, cost, damages, or expenses whatsoever incurred or sustained by the customer resulting from any interpretation made by any of our employees.

Borehole Record		
Bit Size	From	To
13.5 In	0 ft	1110.11 ft
8.75 In	0 ft	8968 ft

Casing Record				
Size	Weight	Grade	From	To
9.625 In	N/A	N/A	0 ft	1100 ft
4.5 In	11.6 lbm/ft	1-80	0 ft	8868 ft

Remarks
ALL DATA IN THIS LOG WAS DEPTH SHIFTED TO MATCH A BAKER HUGHES BOND LOG DATED 15 MAY 2013 AT THE CLIENT'S REQUEST. THE AMOUNT OF LINEAR SHIFT WAS 4 FEET UP. DEPTH SHIFTING PROCESS CREATES THE POTENTIAL FOR COLLAR LENGTHS TO VARY FROM OTHER CASED HOLE LOGS WITHOUT A GAMMA RAY REFERENCE. SHORT JOINT: 5638' - 5660' BHT: 241 degF

Equipment Data					
Run	Trip	Tool	Series Number	Serial Number	Position
1	1	RPM	8281FA	10401926	FREE
1	1	RPM	8281PA	10203151	FREE
1	1	RPM	8281EA	10423671	FREE
1	1	GAMMA RAY	8262XY	10485470	FREE
1	1	TEL/CCL	8248EA	10296408	FREE
1	1	PCM	8250EA	10397894	FREE

MAIN LOG
PNC 3D MODE

SPL PROCESSING					
MEASUREMENT TYPE	PARAMETER	VALUE	UNITS	TOP	BOTTOM
PNC Porosity	Borehole	Cased		4779.750	8877.000
PNC Porosity	Borehole Size	8.750	inch	4779.750	8877.000
PNC Porosity	Casing Size	4.500	inch	4779.750	8877.000
PNC Porosity	Gas Filled	Non Gas Filled		4779.750	8877.000
PNC Porosity	Matrix	Sandstone		4779.750	8877.000

DEPTH OFFSETS							
(for Acquired Curves)							
SERIES	DEPTH OFFSET	ACQUIRED CURVES					
8248EA	-15.320	FLTM					
8248EA	-13.320	CCL	CHV				
8262XY	-10.189	GR4					
8281XA	-0.662	HVC3Q0	SEQ3	AMA3	AML3	BKX	CXS
		CPT3Q0	CPT3Q2	CPT3Q3	CPT3Q4	ET3	IXS
		MCS3	MCS3Q0	QCAL3	RGN3	RICX	SDA3
		CDL3	CDL3	CDL3	CDL3	YD	LOG507

8281XA

-0.250

SDL3	SGA3	SGL3	STA3	X5	ASPEC3
AMB3	AMF3	CHF3	IXSC	IXSN	RAT023
RICXC	RIN13C	RIN23	RIN23C	SD3D	SG3D
SGB3	SGF3	WDTH3	CXSR	IXSR	XSR
RICXR					
HVC2Q0	SEQ2	AMA2	AMB2	AMF2	AML2
BKL	CHF2	CLS	CPT2Q0	CPT2Q2	CPT2Q3
CPT2Q4	ET2	ILS	LS	MCS2	MCS2Q0
QCAL2	RGN2	RICL	RONE23	RTW023	SDA2
SDL2	SGA2	SGB2	SGF2	SGK2	SGL2
STA2	ASPEC2	ILSC	ILSN	WDTH2	RICLC
CLSR	ILSR	LSR	RICLR		
CPRS	HVC1Q0	MV	SEQ	SEQ1	AMA1
AMB1	AME1	AMF1	AML1	BKS	CHF1
CSS	CORB	CORF	CPT1Q0	CPT1Q2	CPT1Q2A
CPT1Q2B	CPT1Q2C	CPT1Q3	CPT1Q4	CPT1Q5	ET1
G1	G2	GE1S	GE2S	ISS	MCS1
MCS1Q0	QA1	QCAL1	QM1	RAT0	RAT013
RBOR	RGN1	RICS	RIN	RONE	RPOR
RTW0	RIN13	RONE13	RTW013	SALB	SC1
SDA1	SDL1	SGA1	SGB1	SGBC	SGE1
SGF1	SGFC	SGK1	SGL1	SS	SS2
STA1	PD1S	PD2S	PD3S	MD1S	MD2S
MD3S	DG1S	DG2S	DG3S	PD1M	PD2M
PD3M	MD1M	MD2M	MD3M	DG1M	DG2M
DG3M	MVS	MA	MM	FILV	IAM
TA	PVM	PVS	IAS	SSTAT	QPD1
QPD2	QPD3	QMD1	QMD2	QMD3	QDG1
QDG2	QDG3	QMA	QTA	QFILV	QMV
QPV	QIA	DERR	DCNT	QPK1	QSA1
PKS1	ASPEC1	HOC	FE2XC	ISSC	RINC
ISSN	RDEN	WDTH1	RICSC	CSSR	G1R
G2R	ISSR	SSR	SS2R	RATOR	RAT013R
RBORR	RICSR	RINR	RIN13R	RONER	RPORR
RTWOR					
TEN	TEN				

SYSTEM

0.000

Created by : RPM9, v5.3.1.0

Plotted by : PlotMgr, v5.4.504

Company : WPX ENERGY

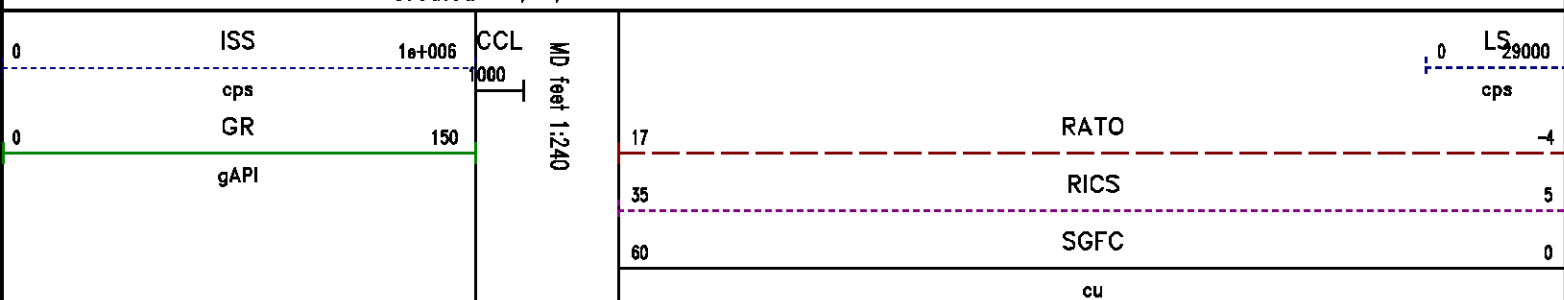
Well : HOEPPLI RWF 333-36

File Name : D:\WELLDATA\rp333\MAIN.XTF

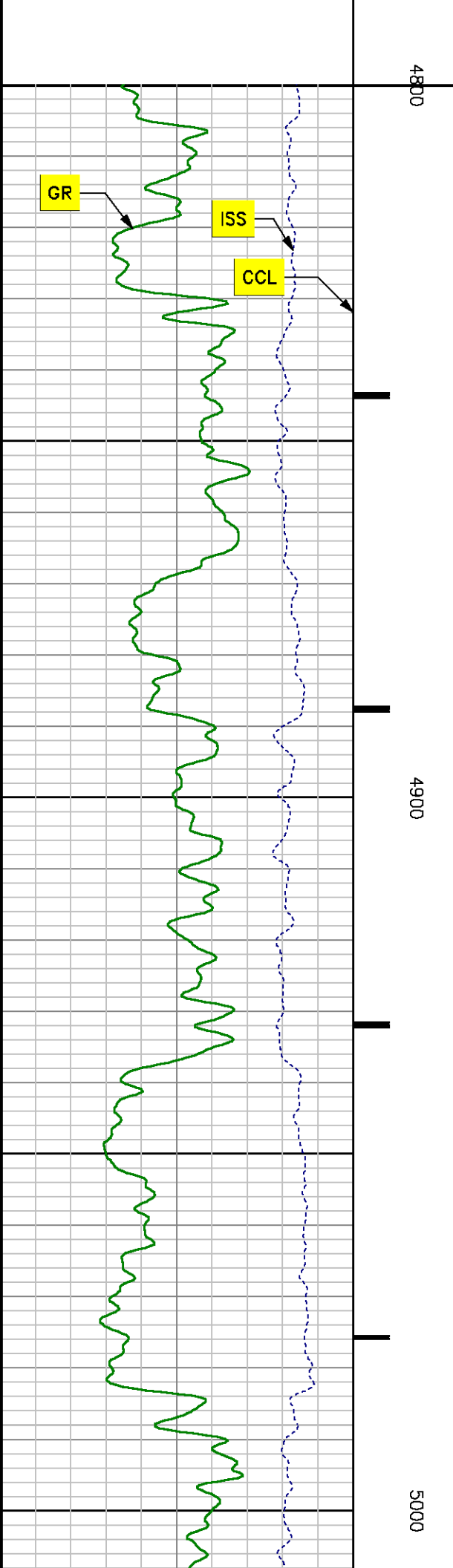
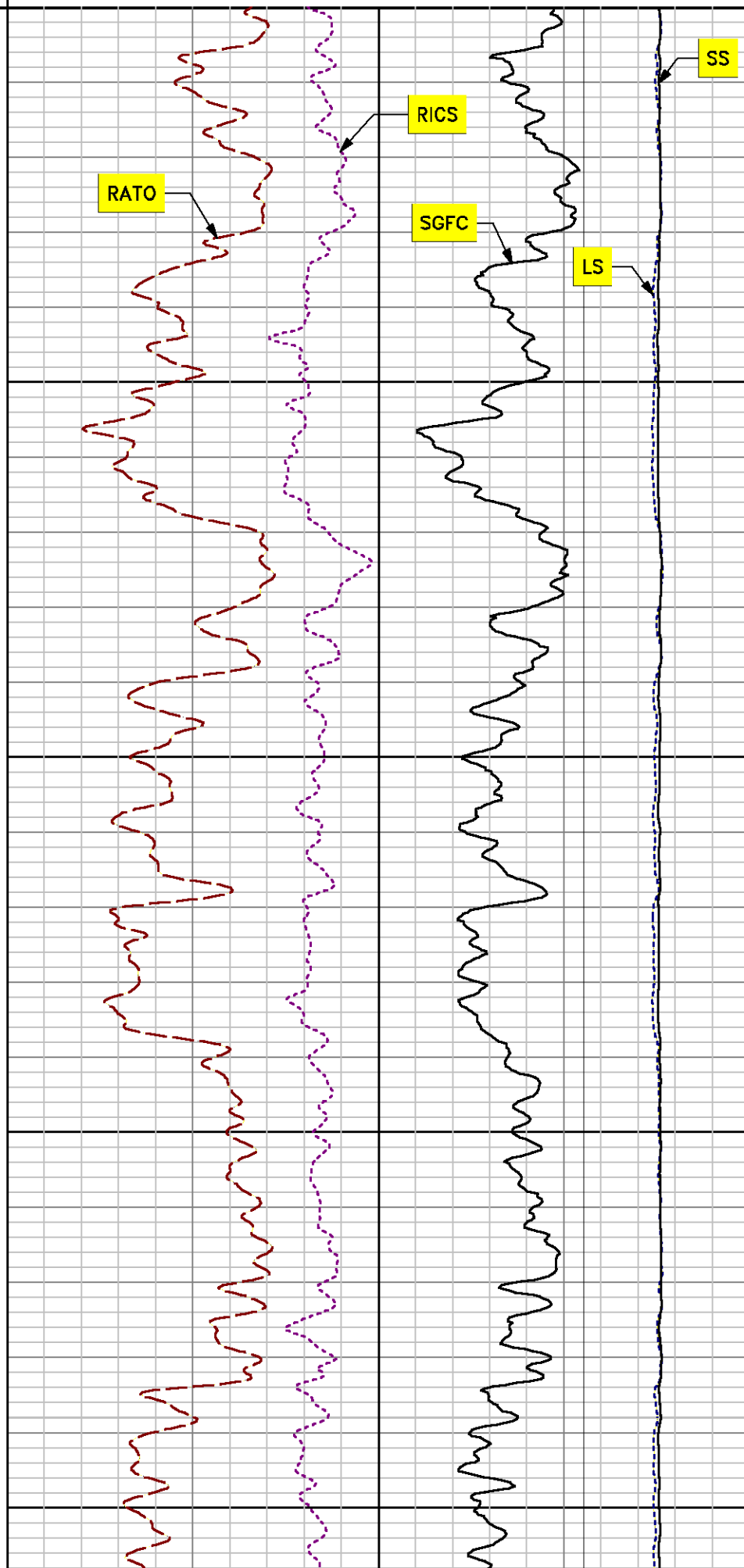
Mode : PlotMgr 5.4.504

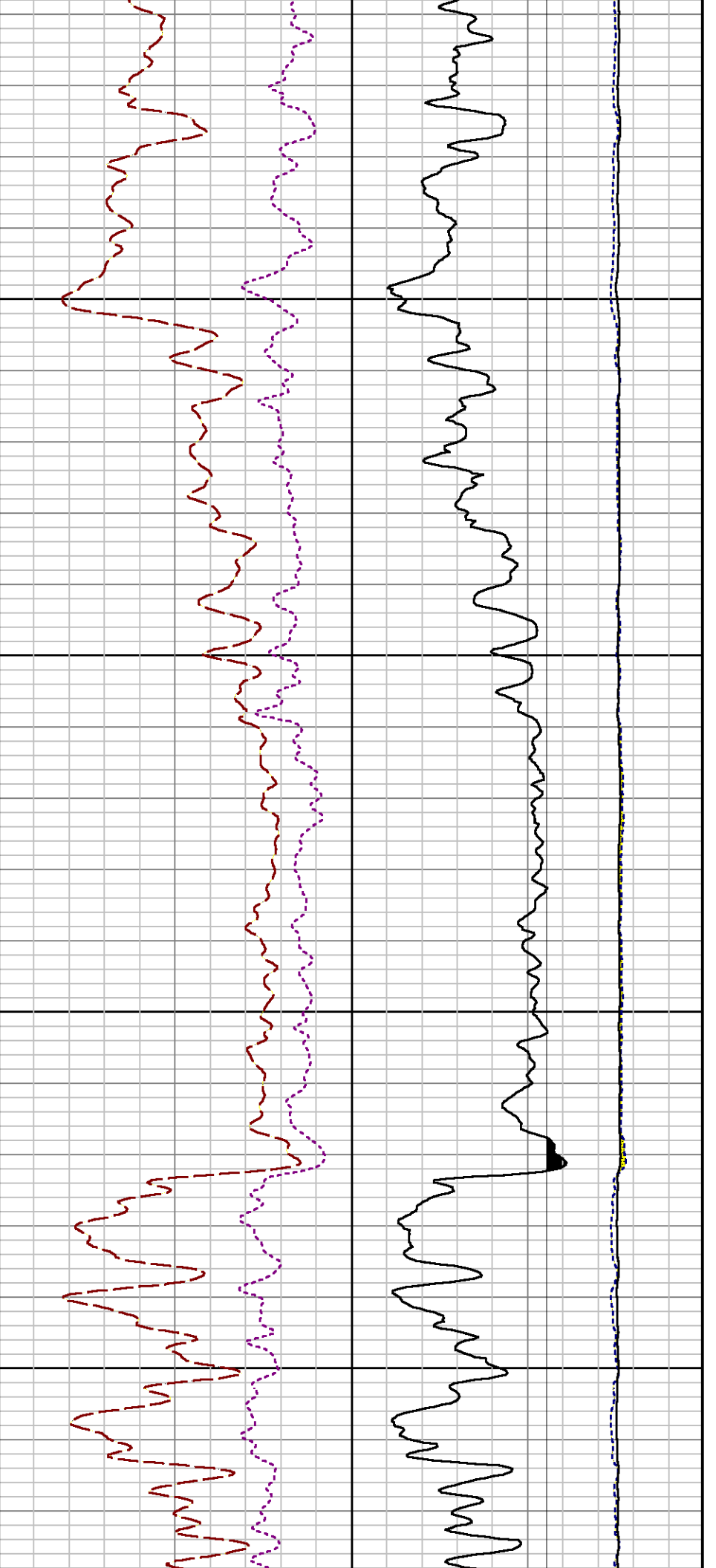
Interval : 4800.00 - 8870.00 feet UP

Created : 5/15/2013 1:55:56 PM



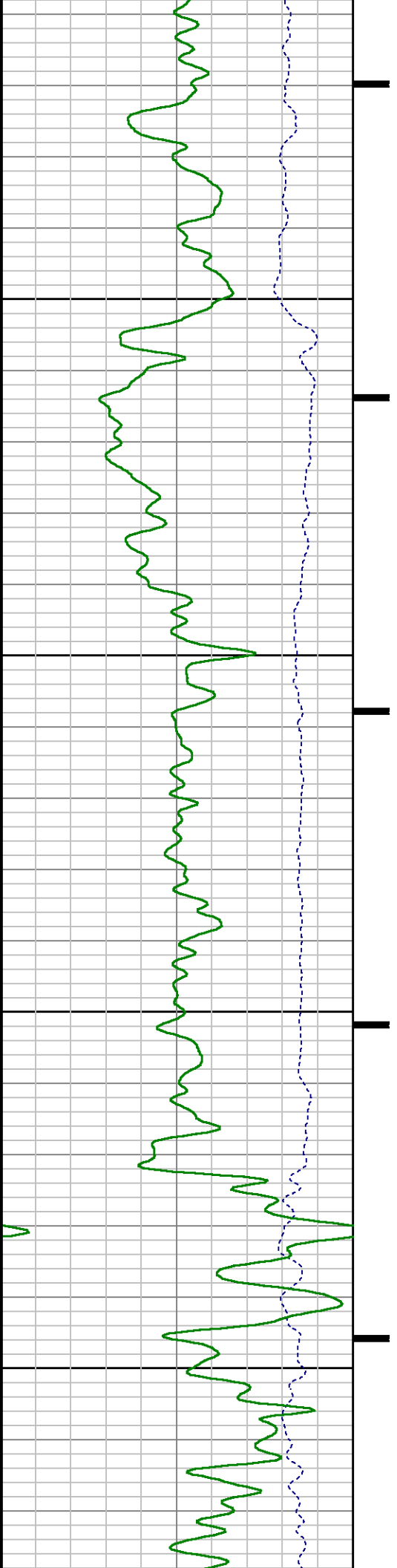
SS
0 290000
cps

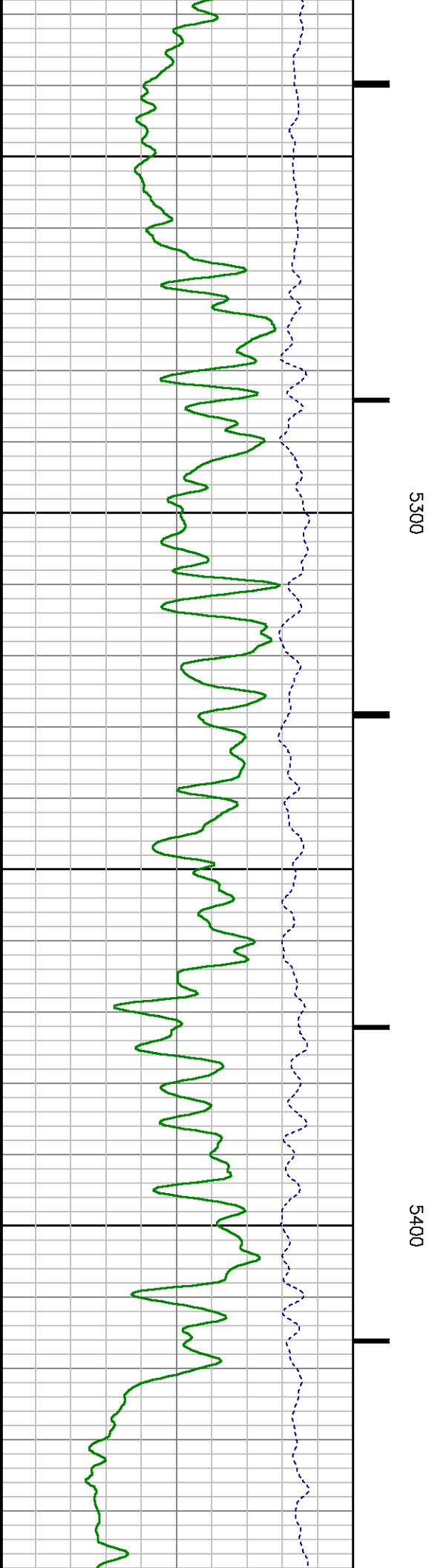
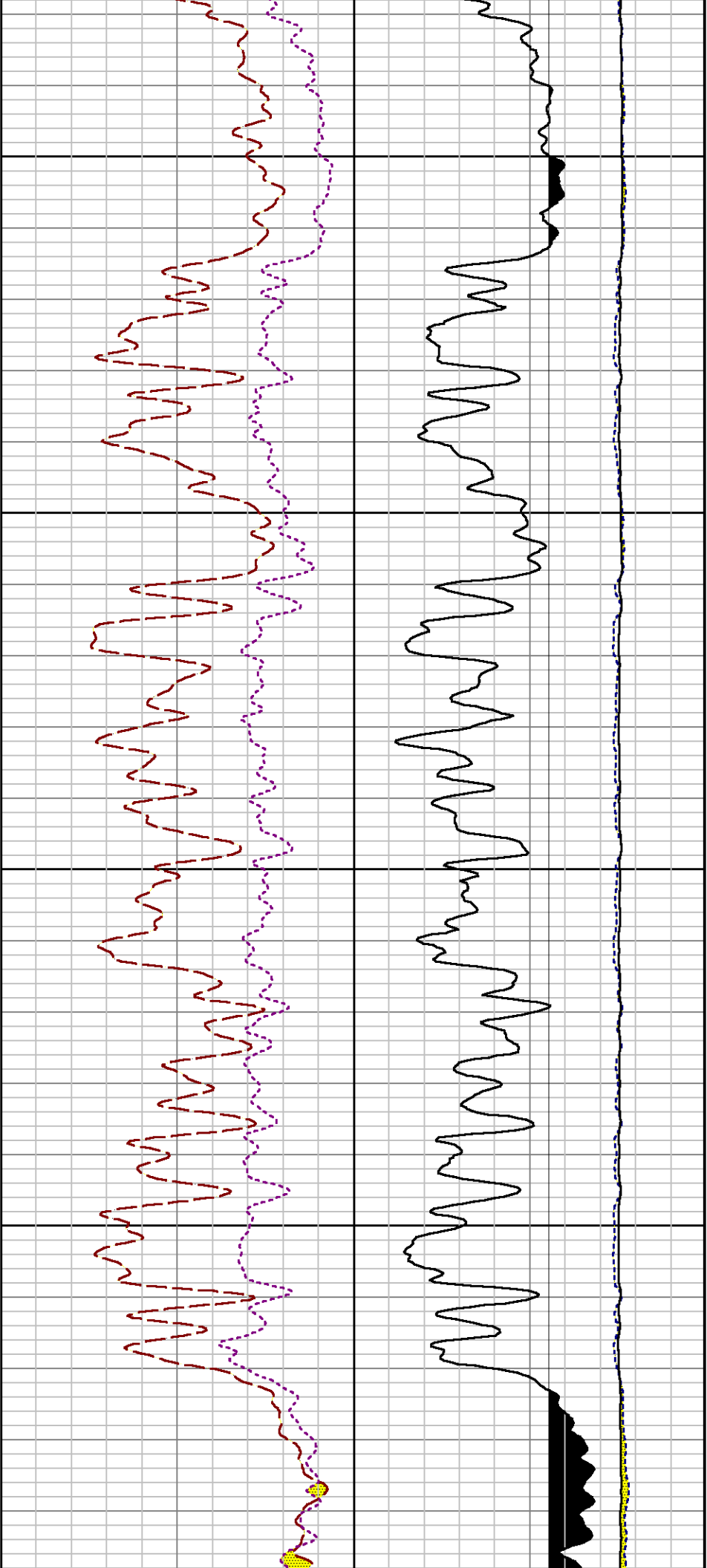


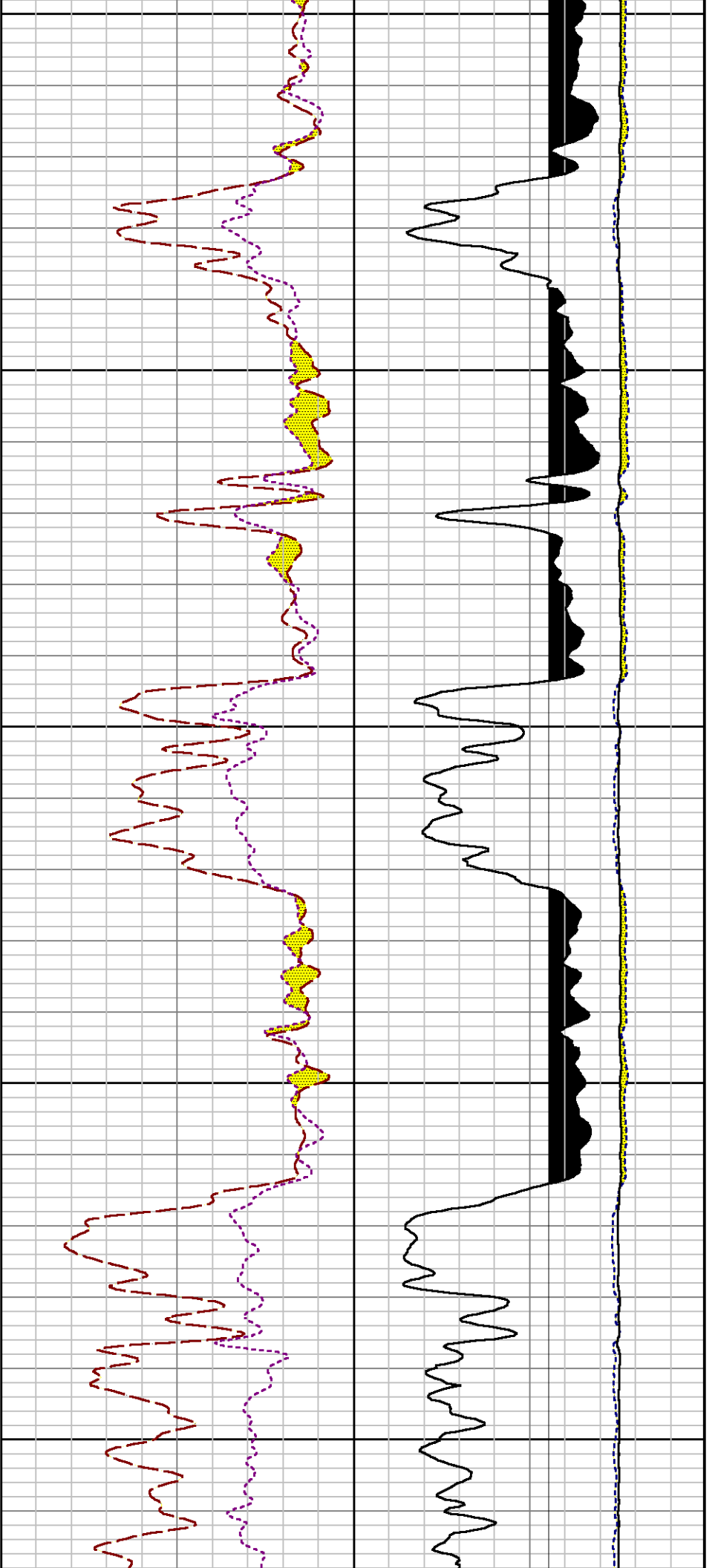


5100

5200

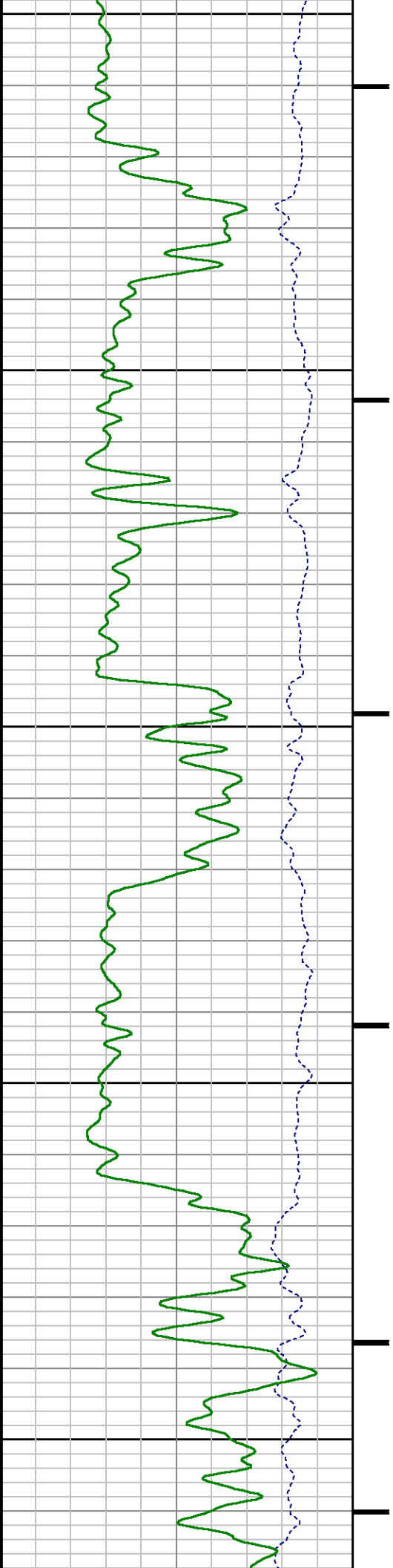


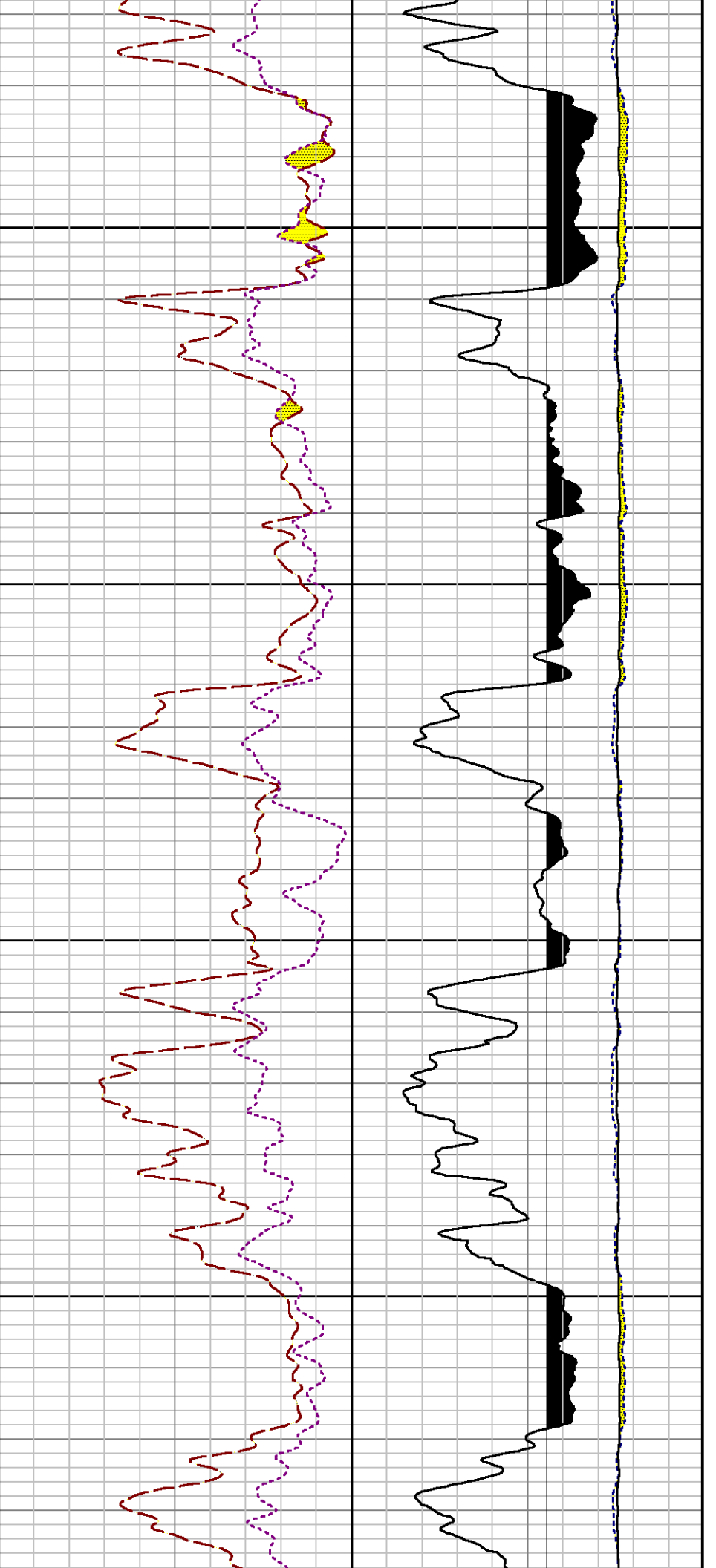




5500

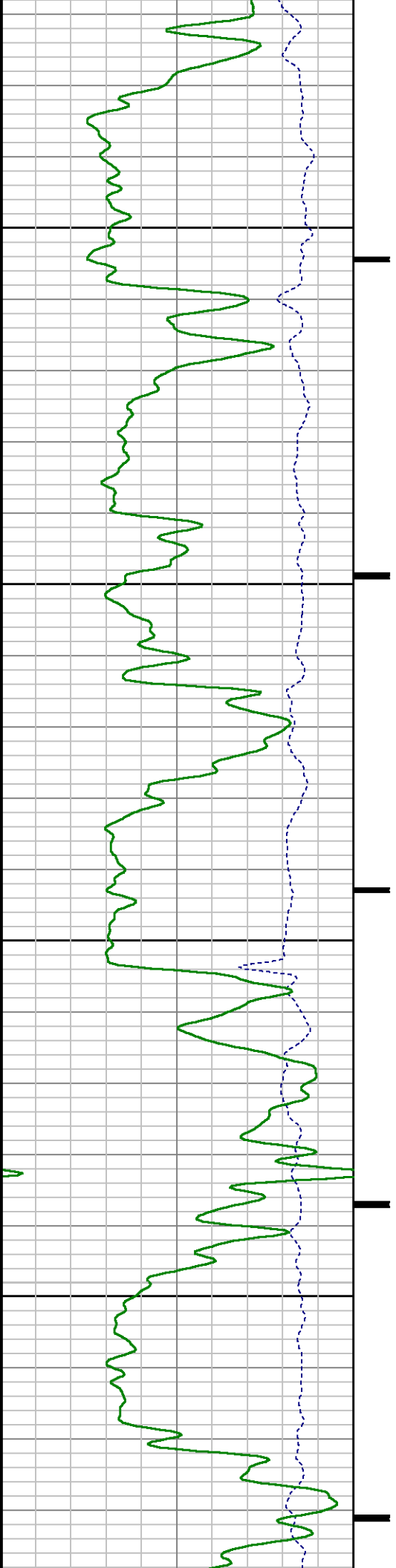
5600

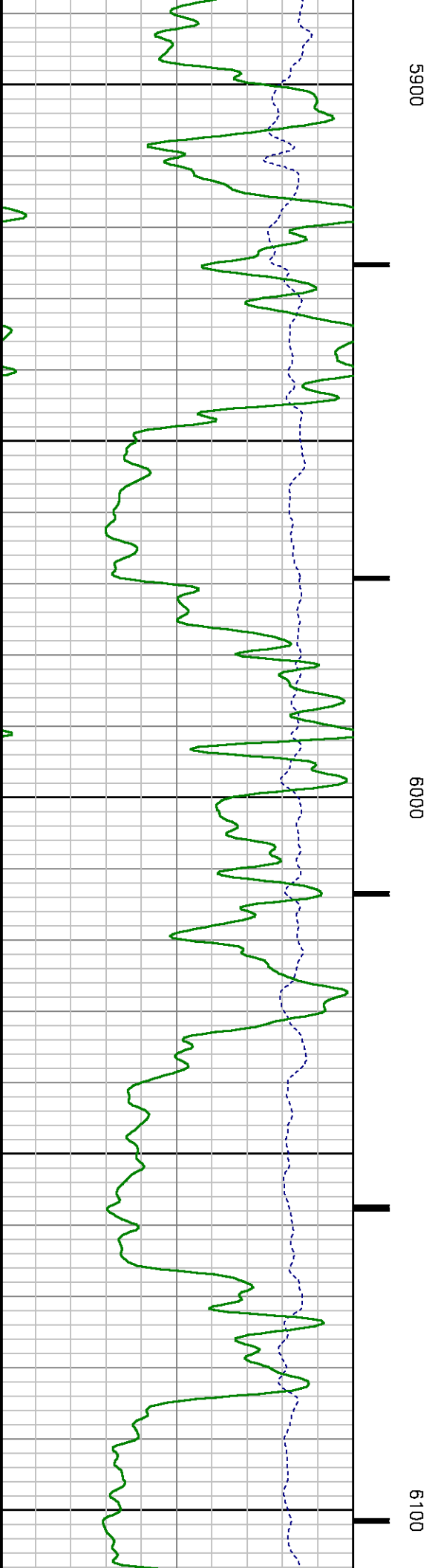
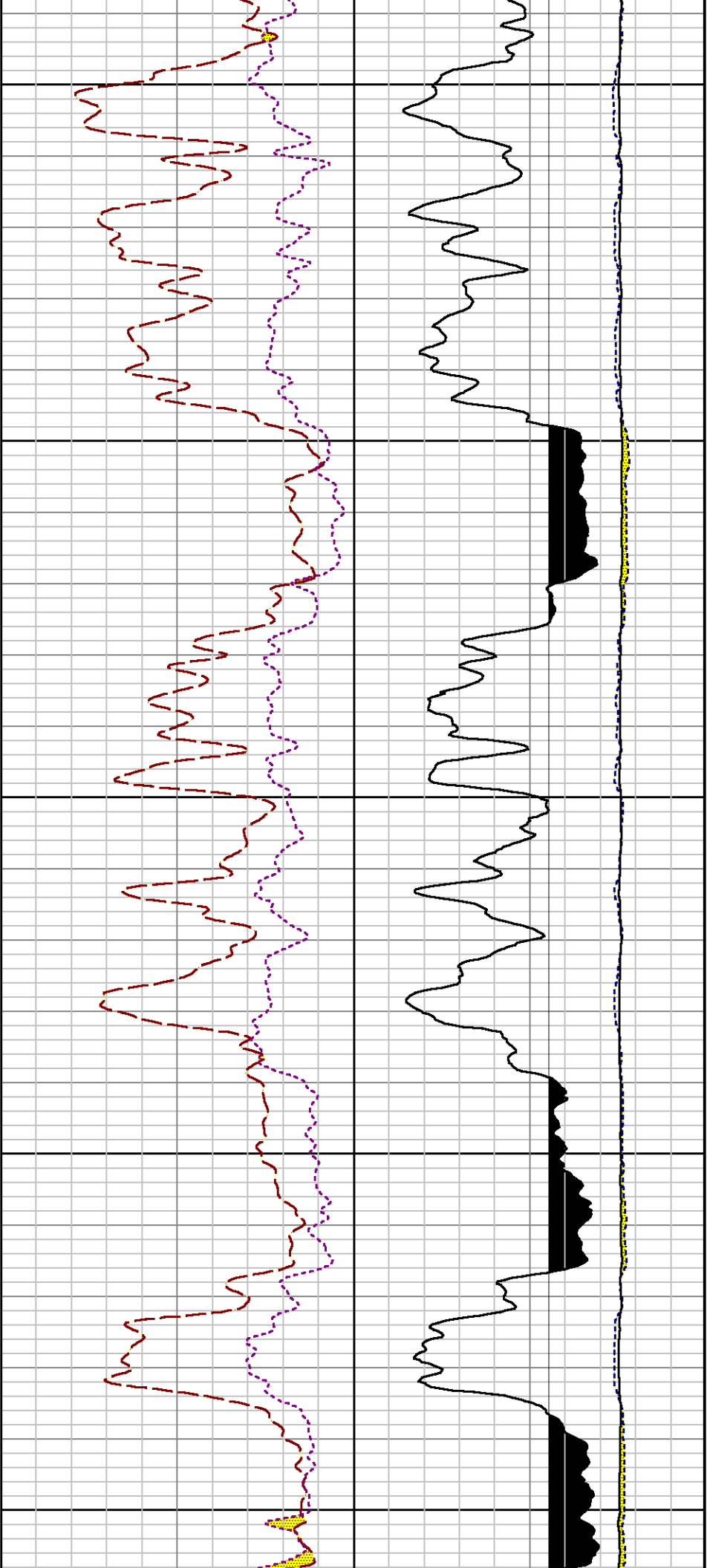


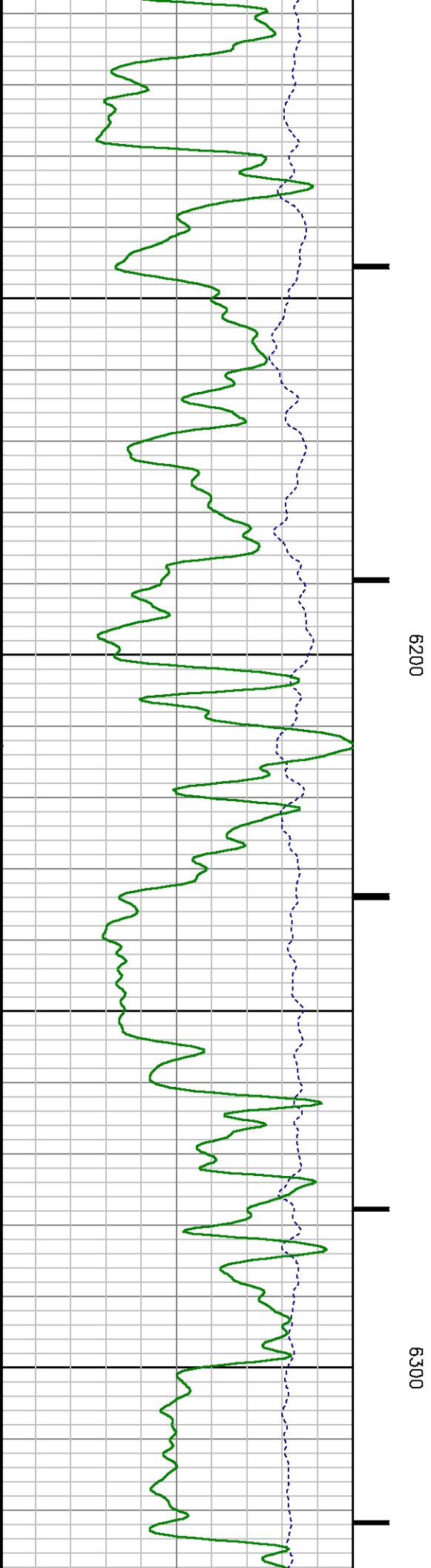
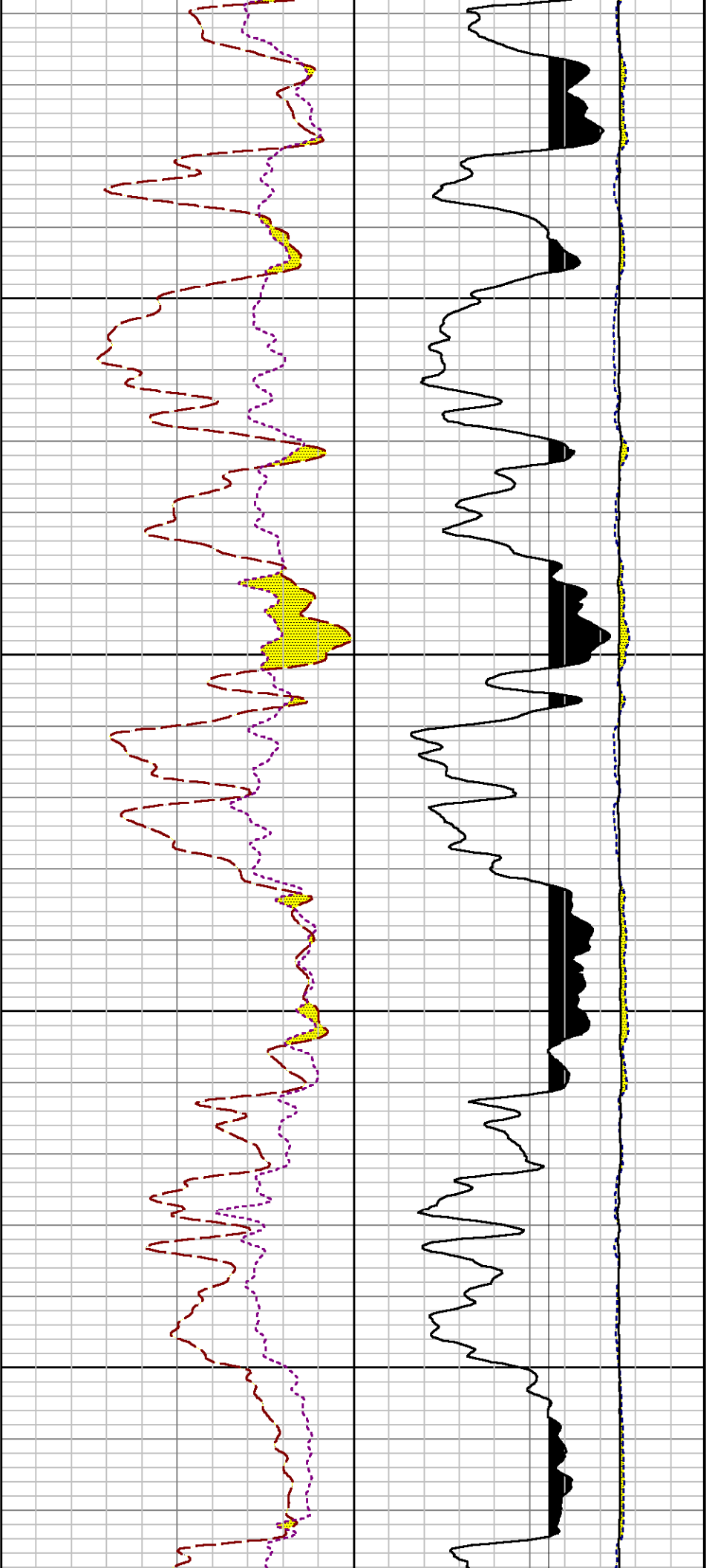


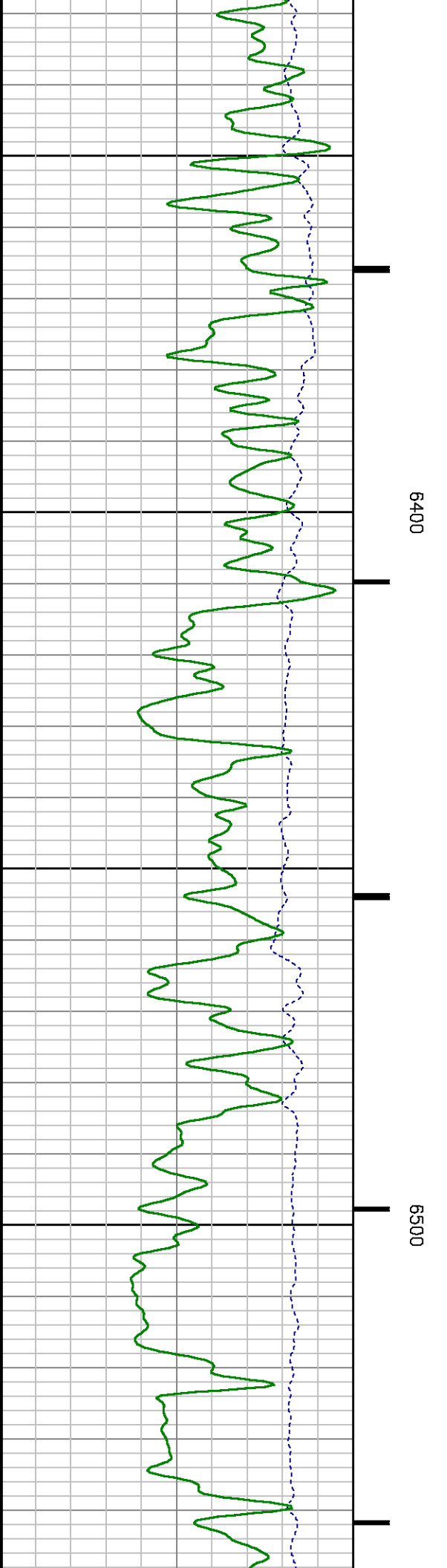
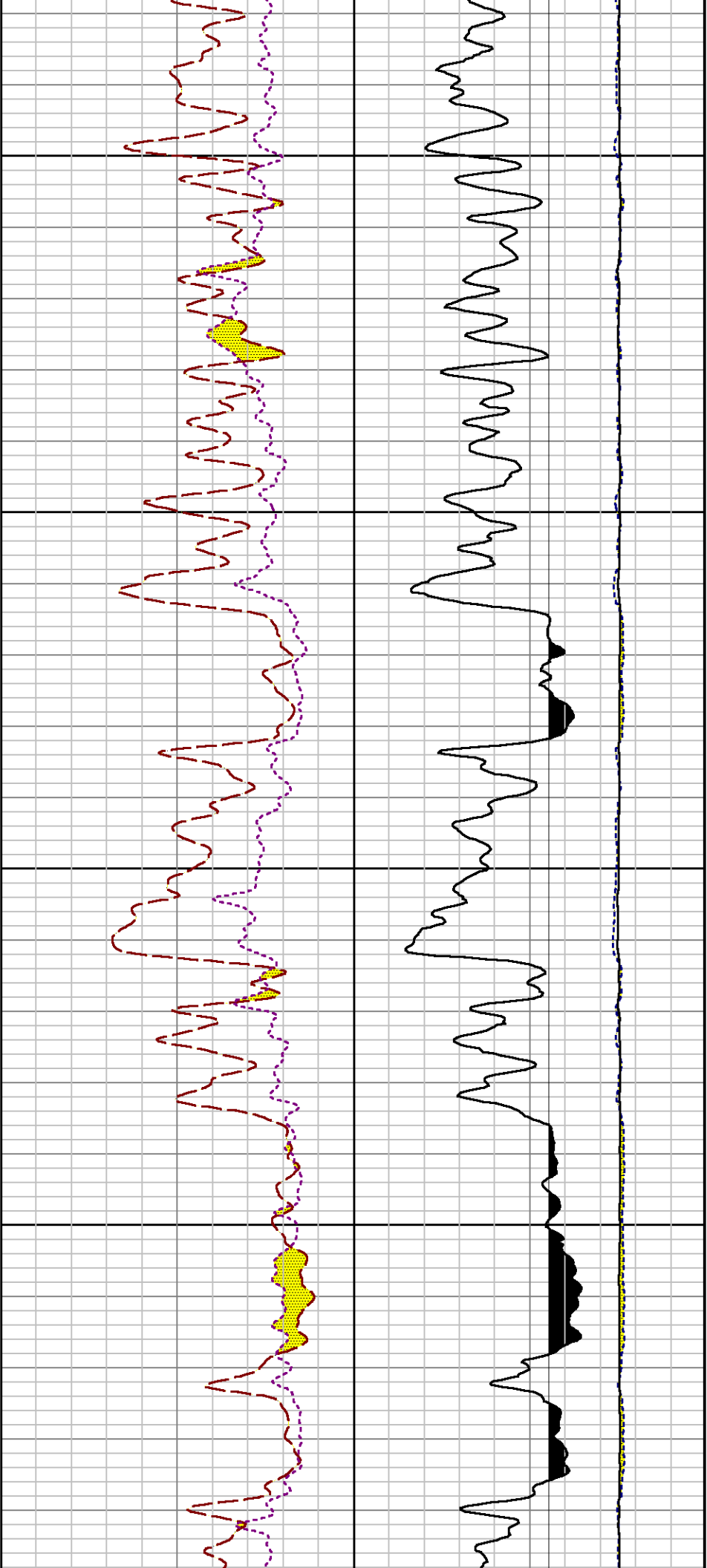
5700

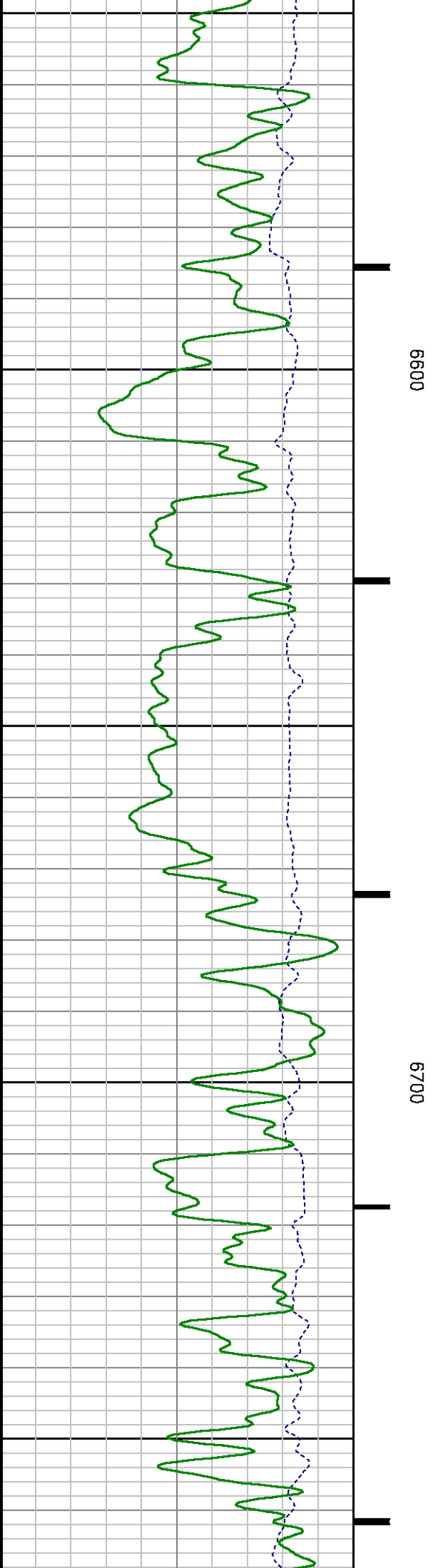
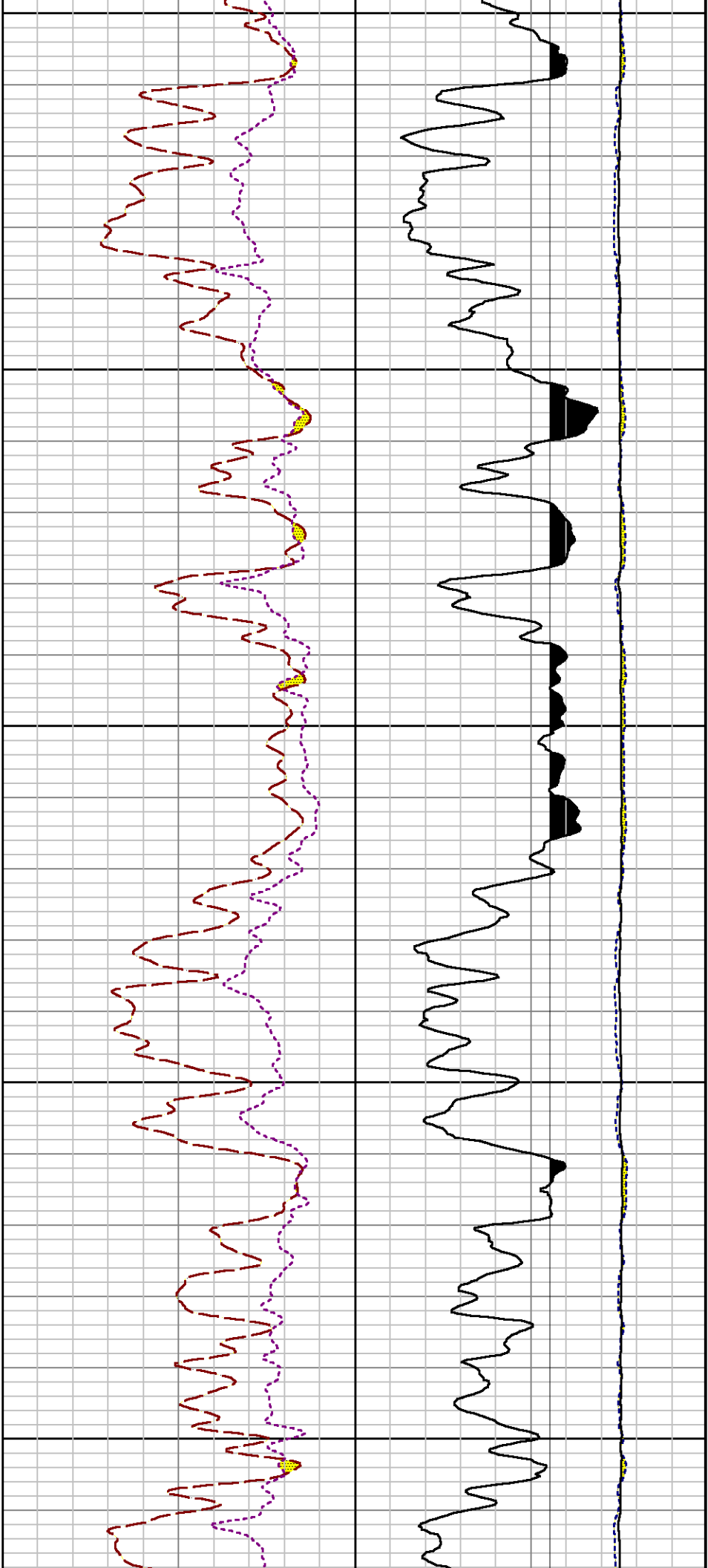
5800

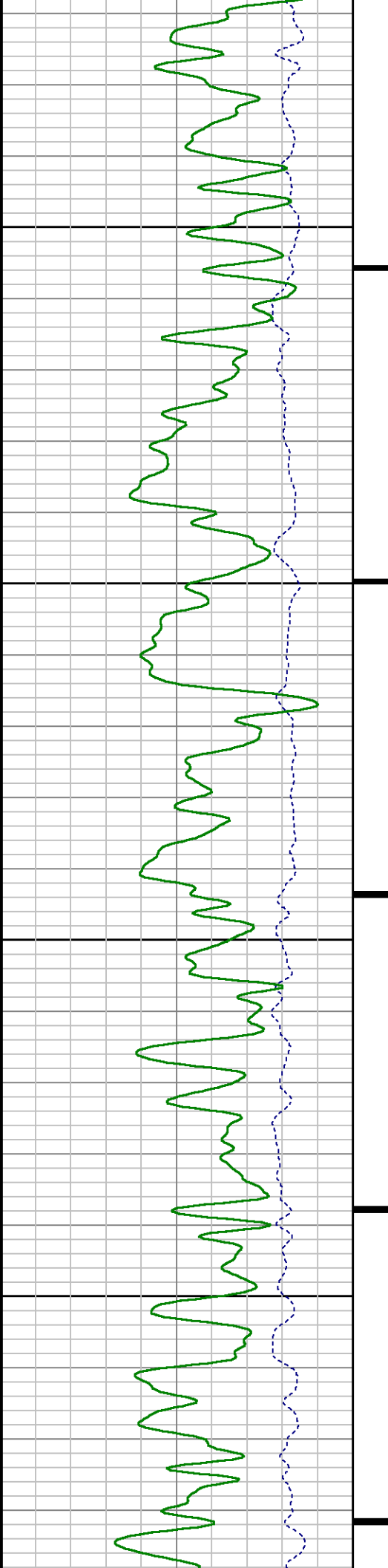






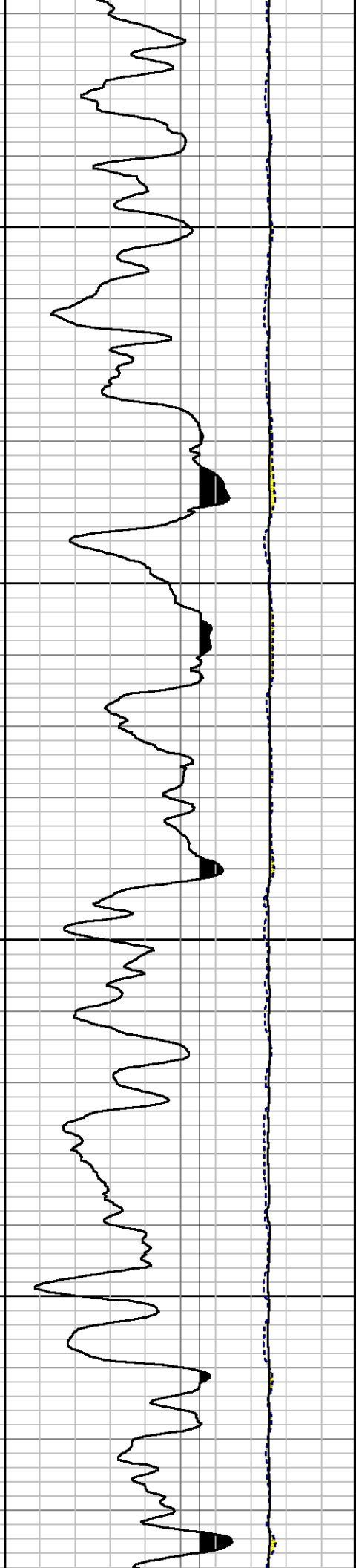
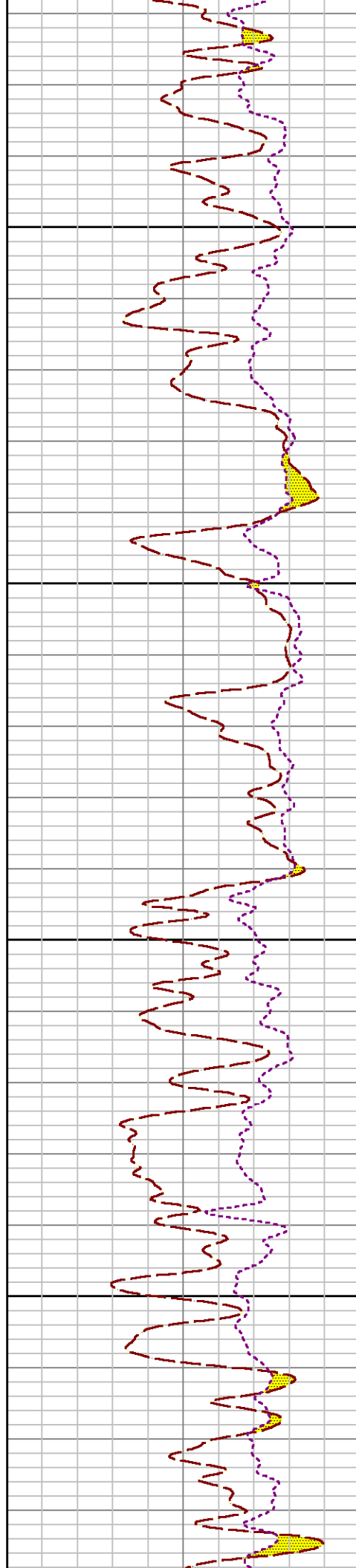


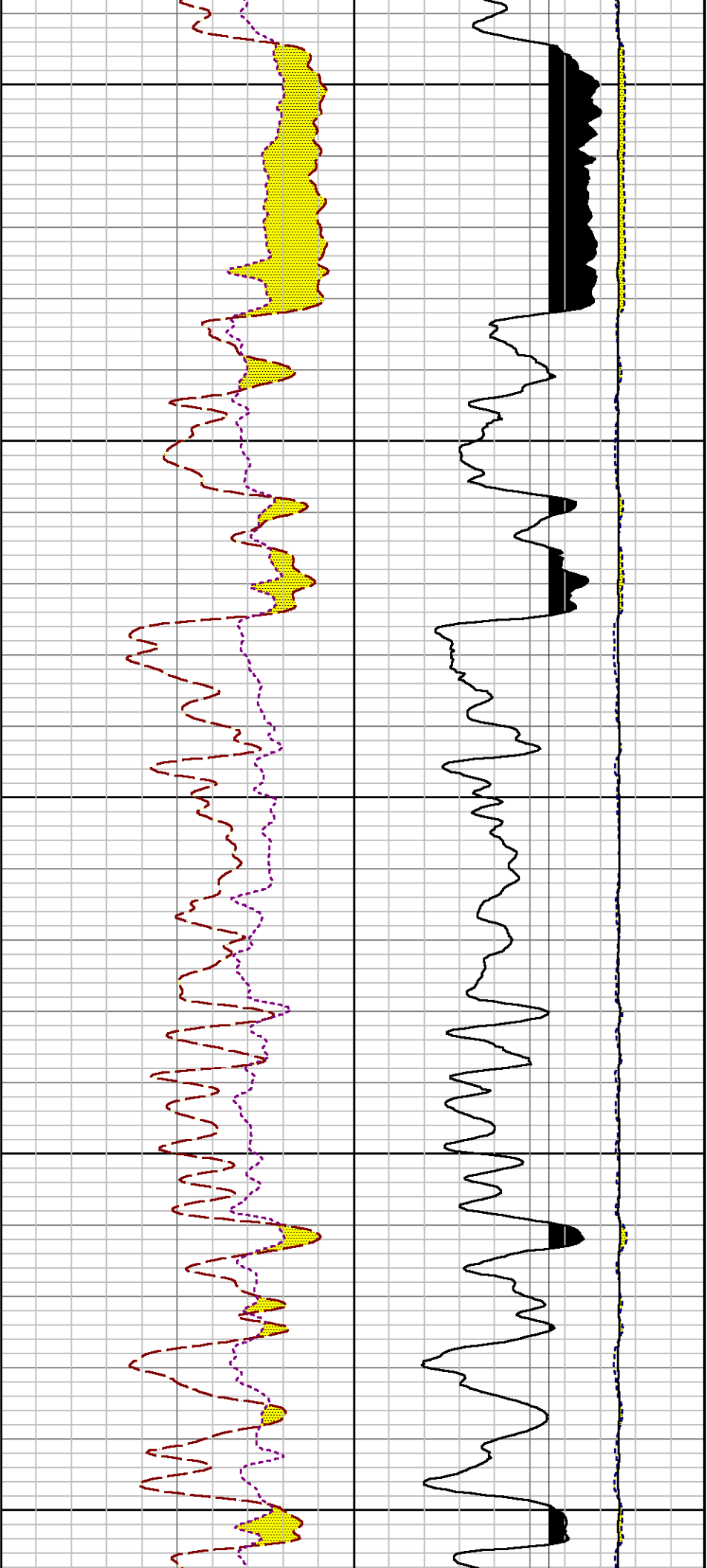




0089

0069

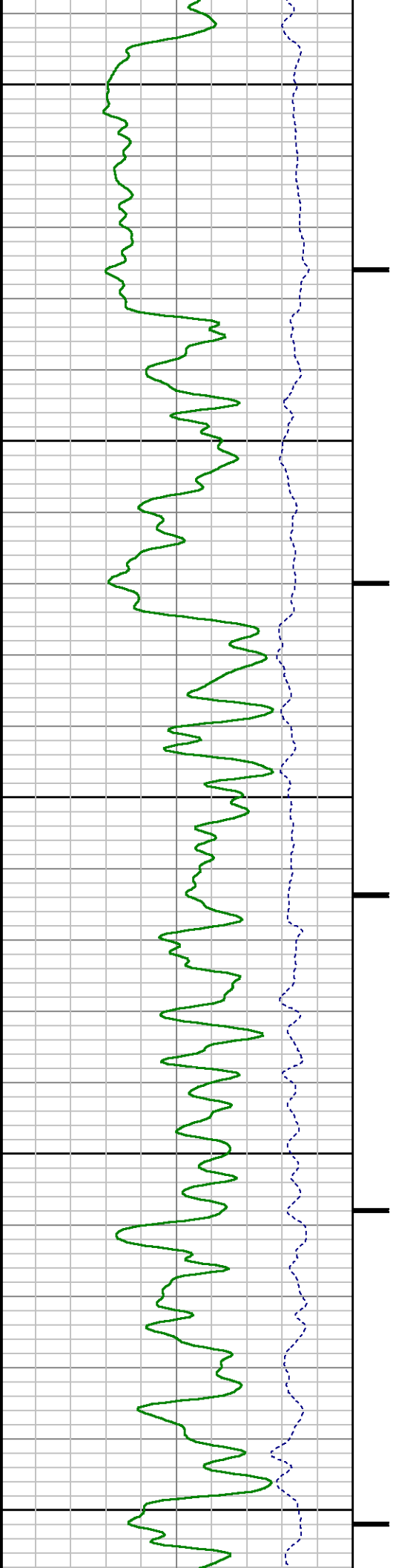


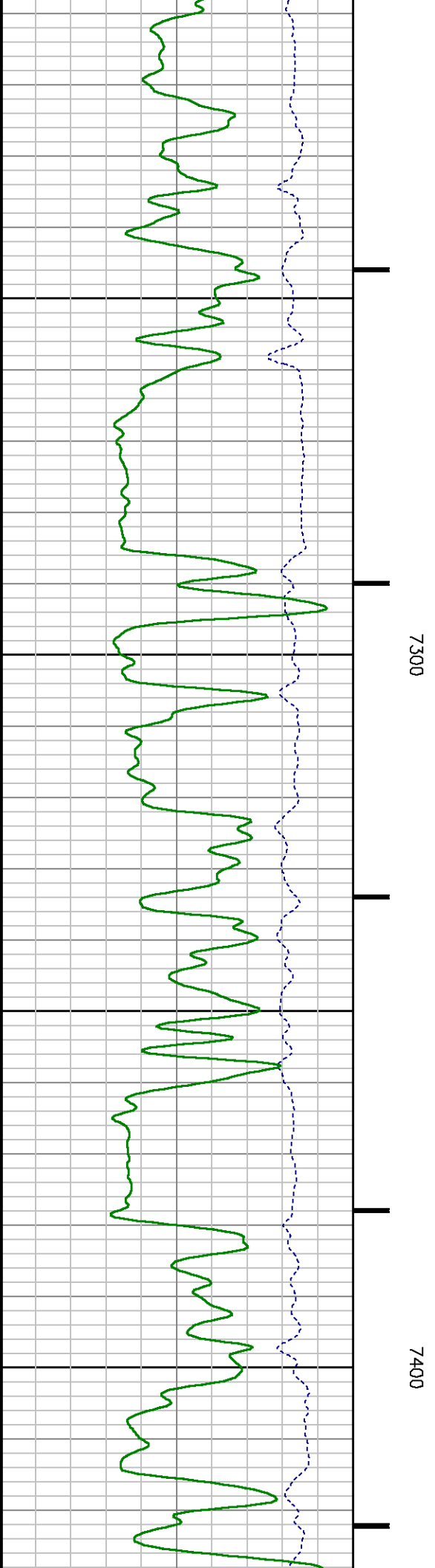
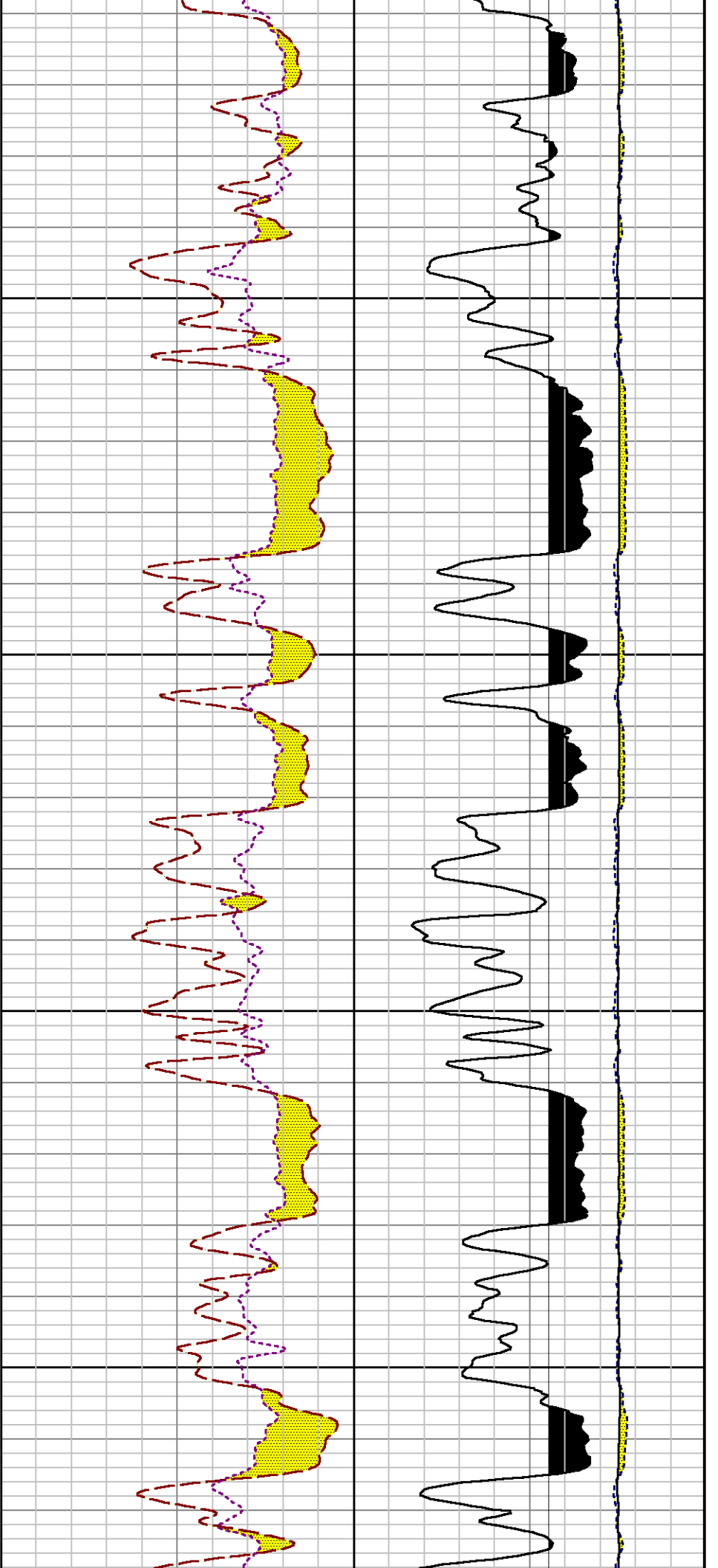


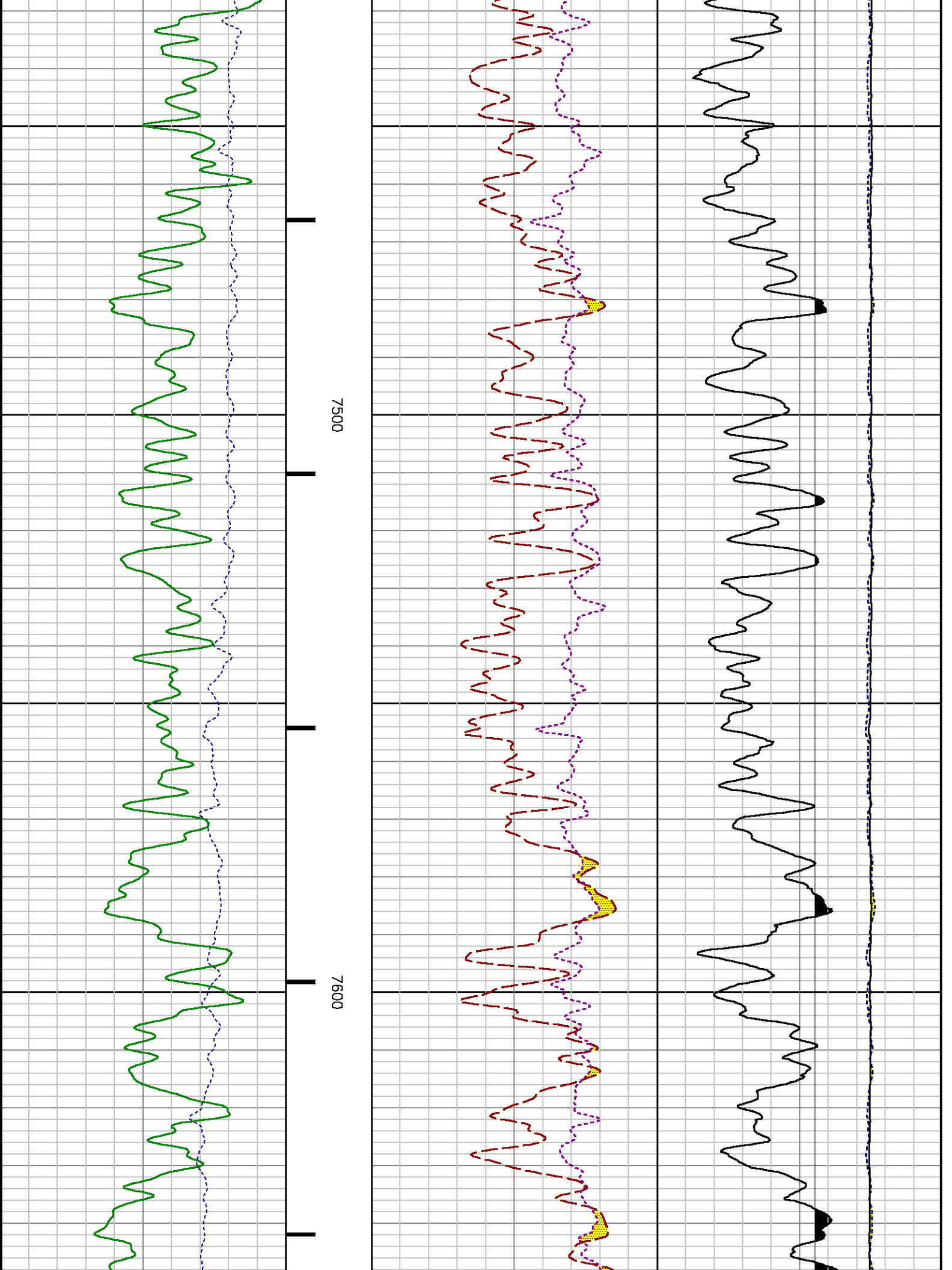
7000

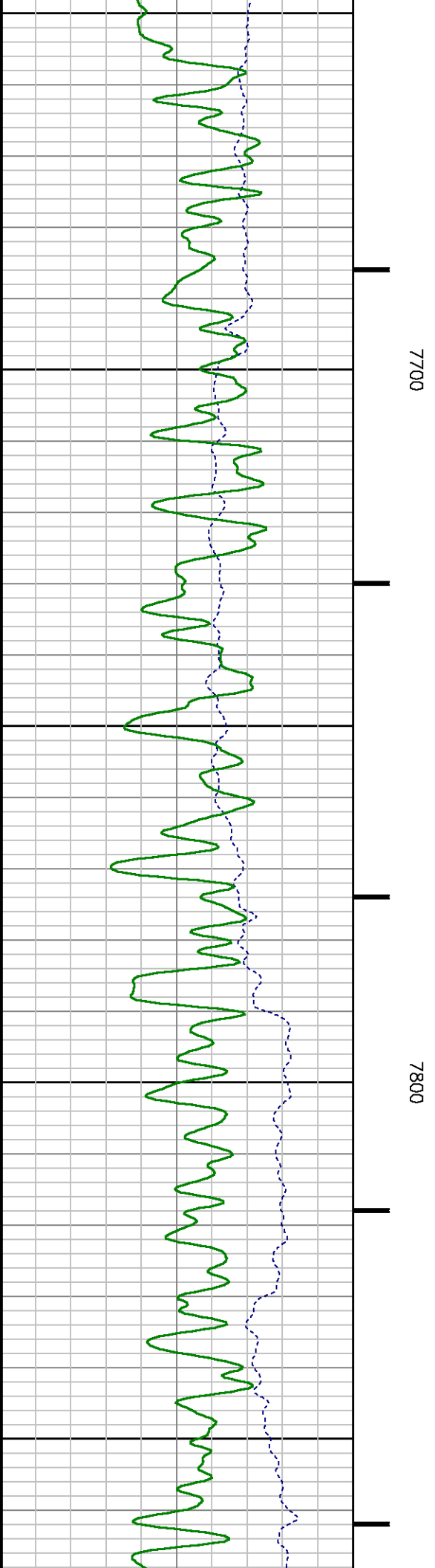
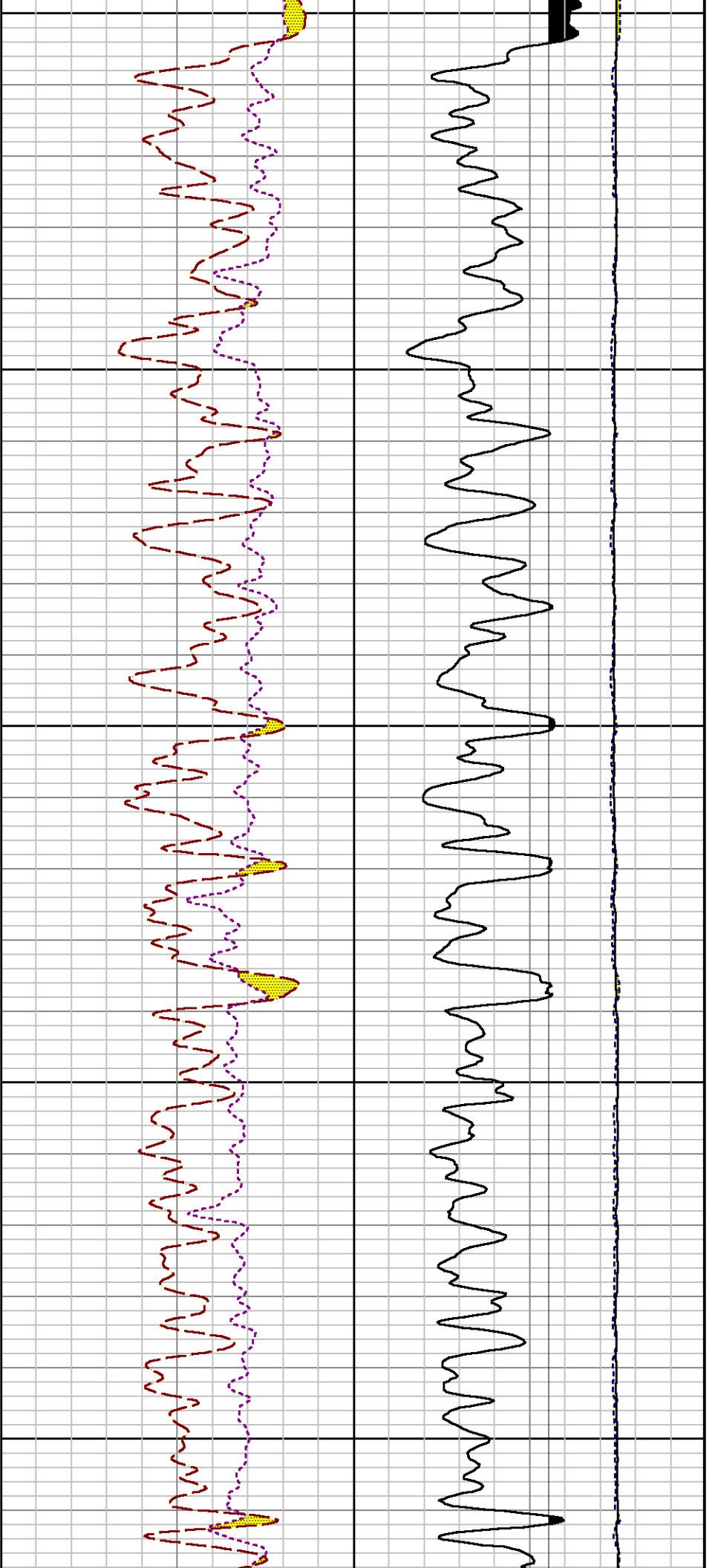
7100

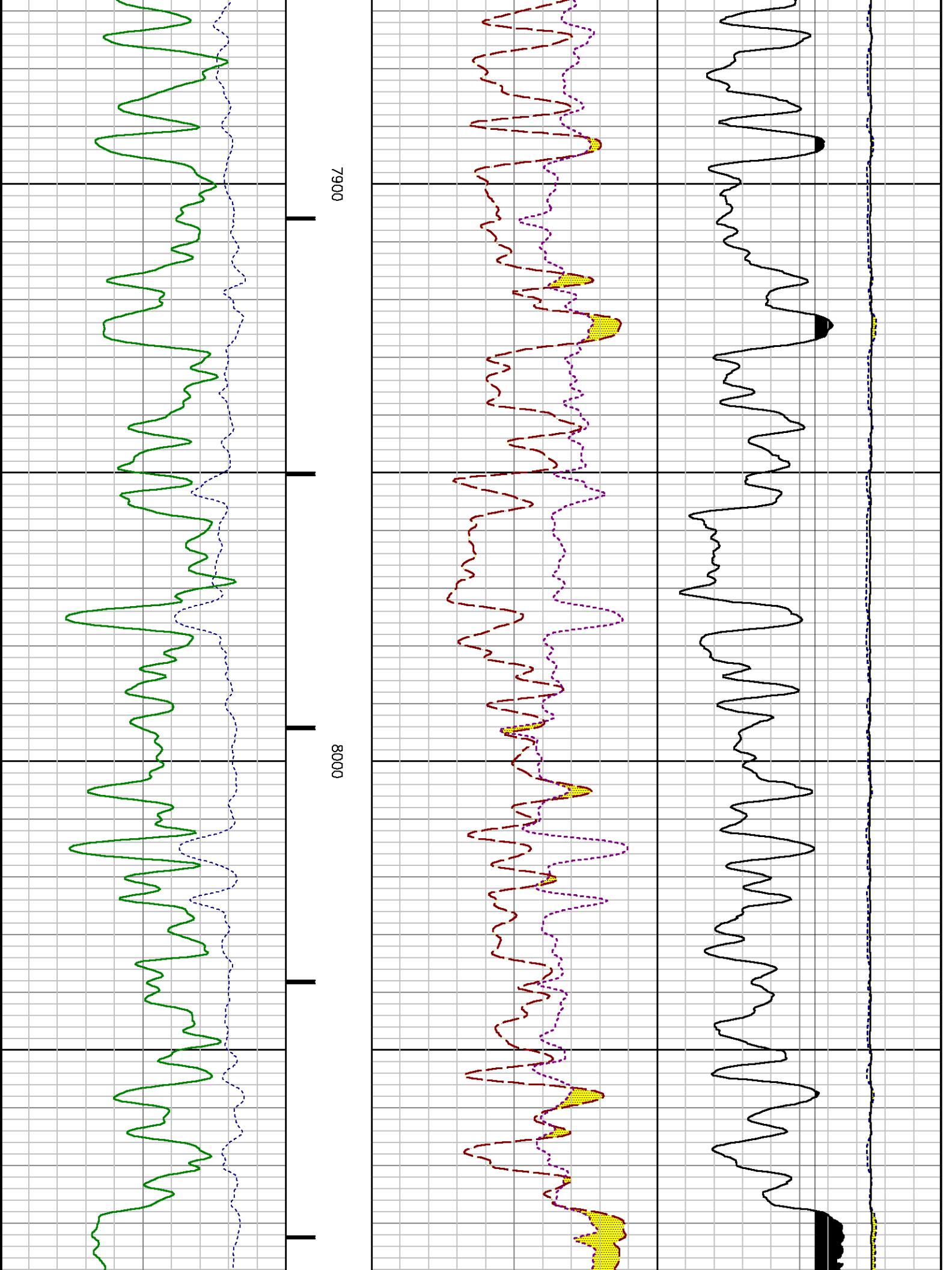
7200

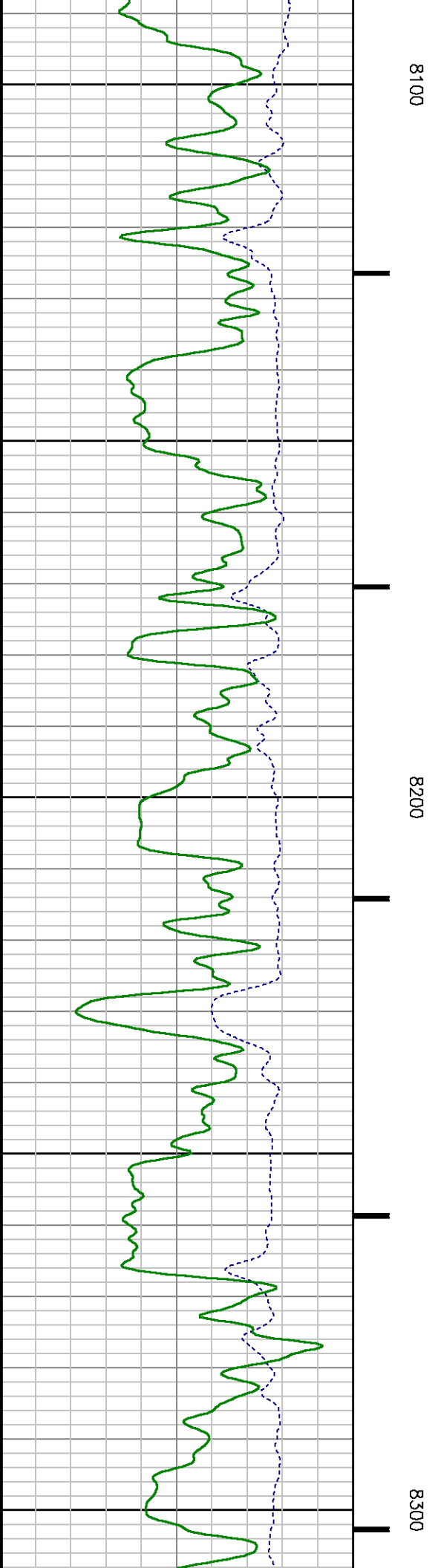
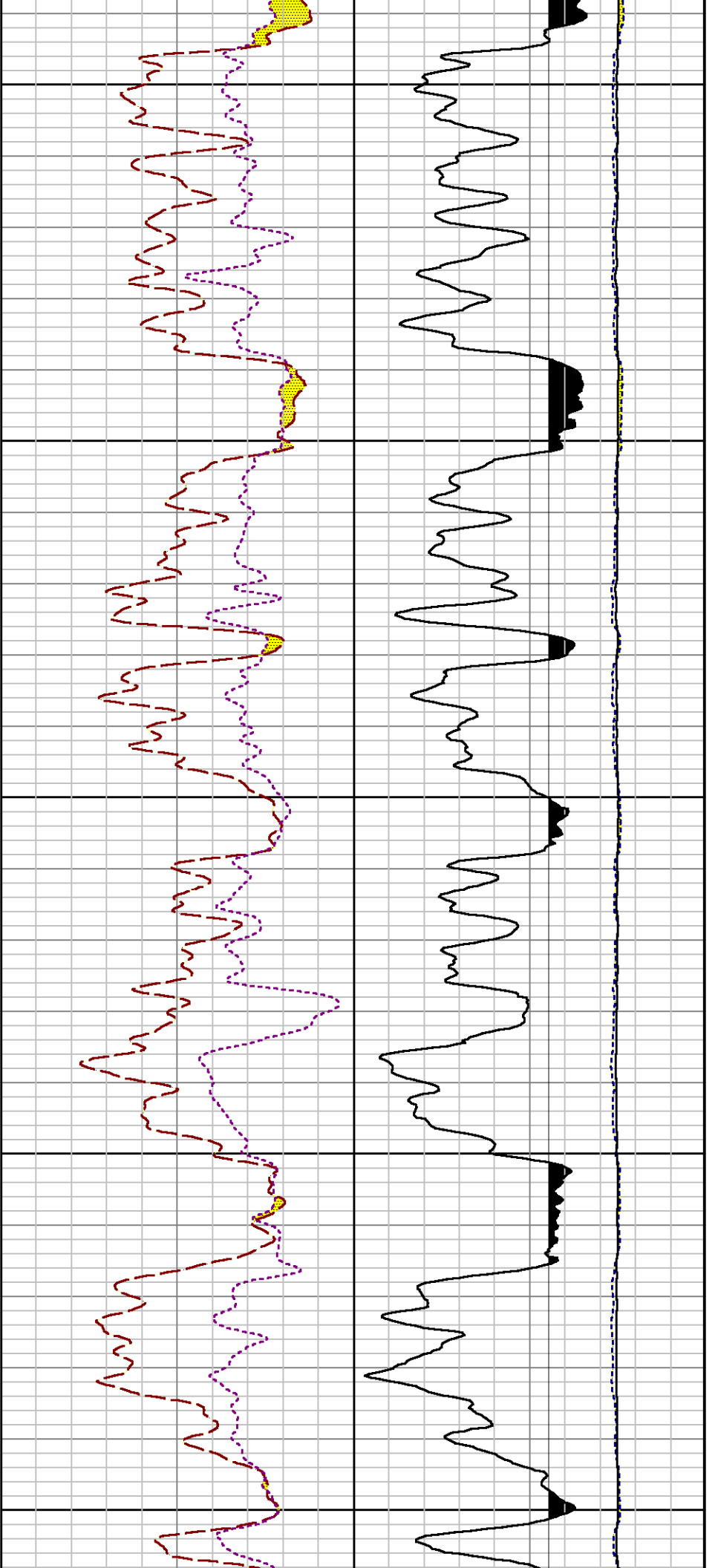


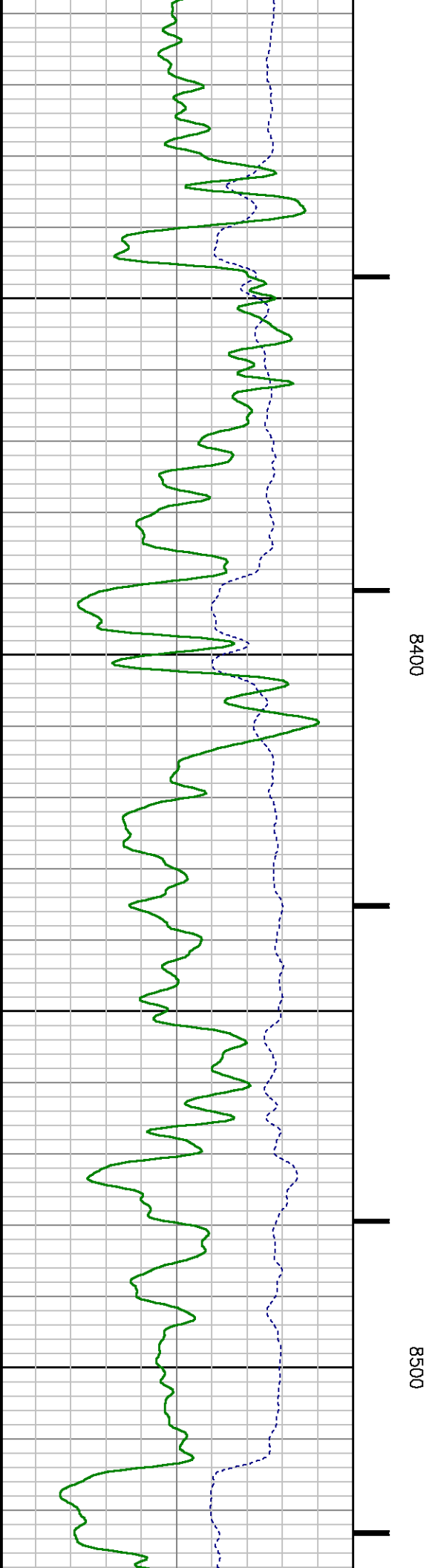
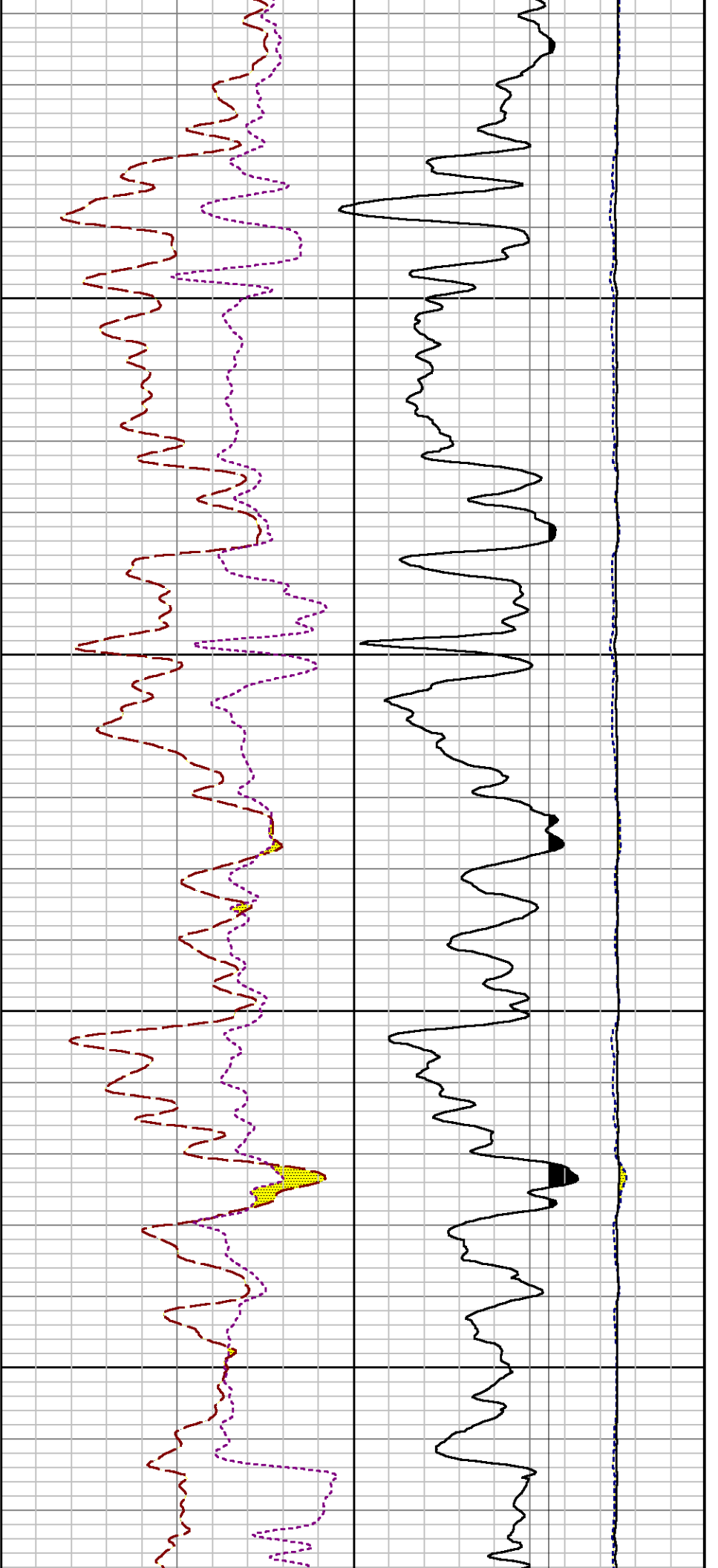


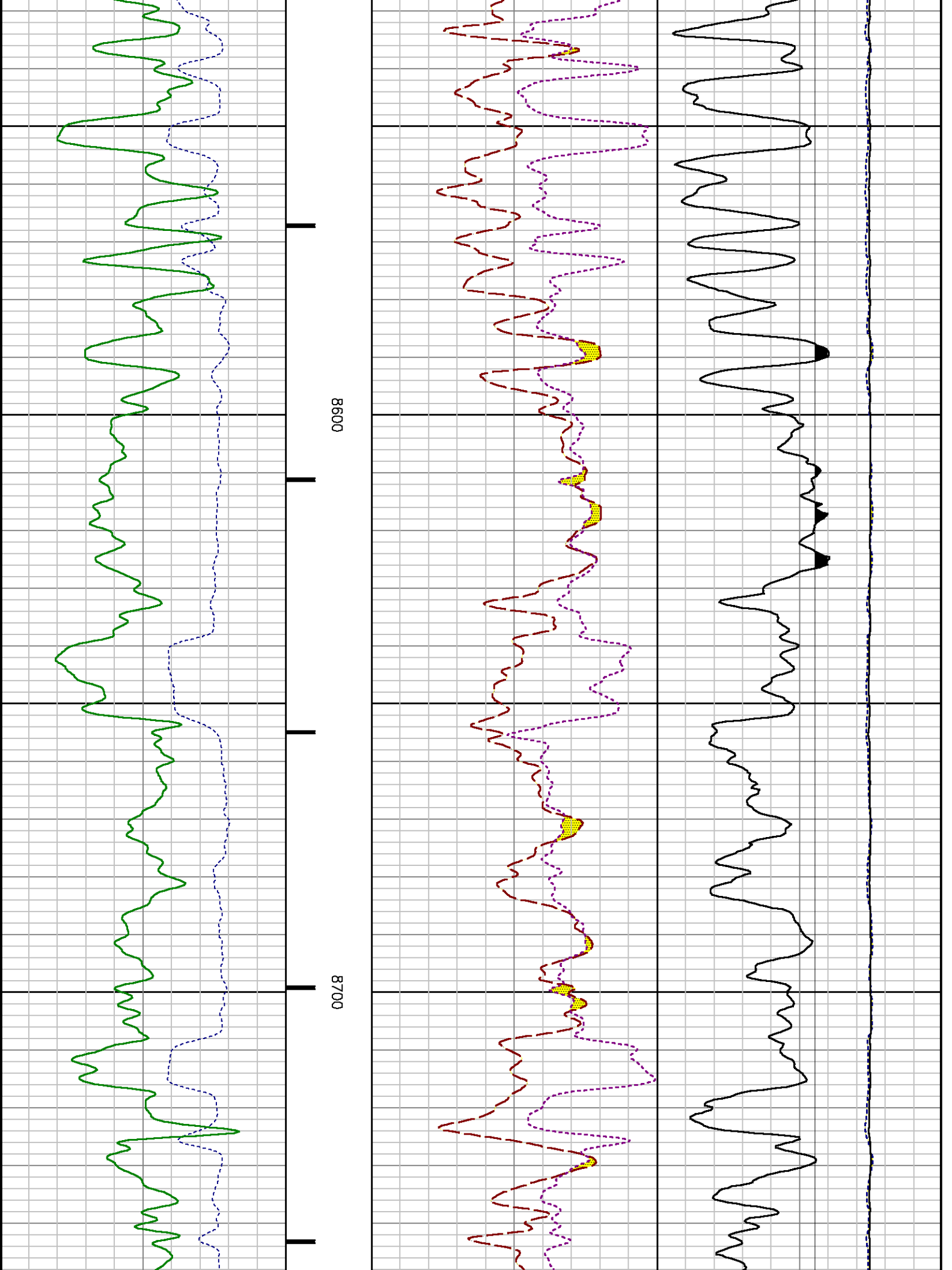


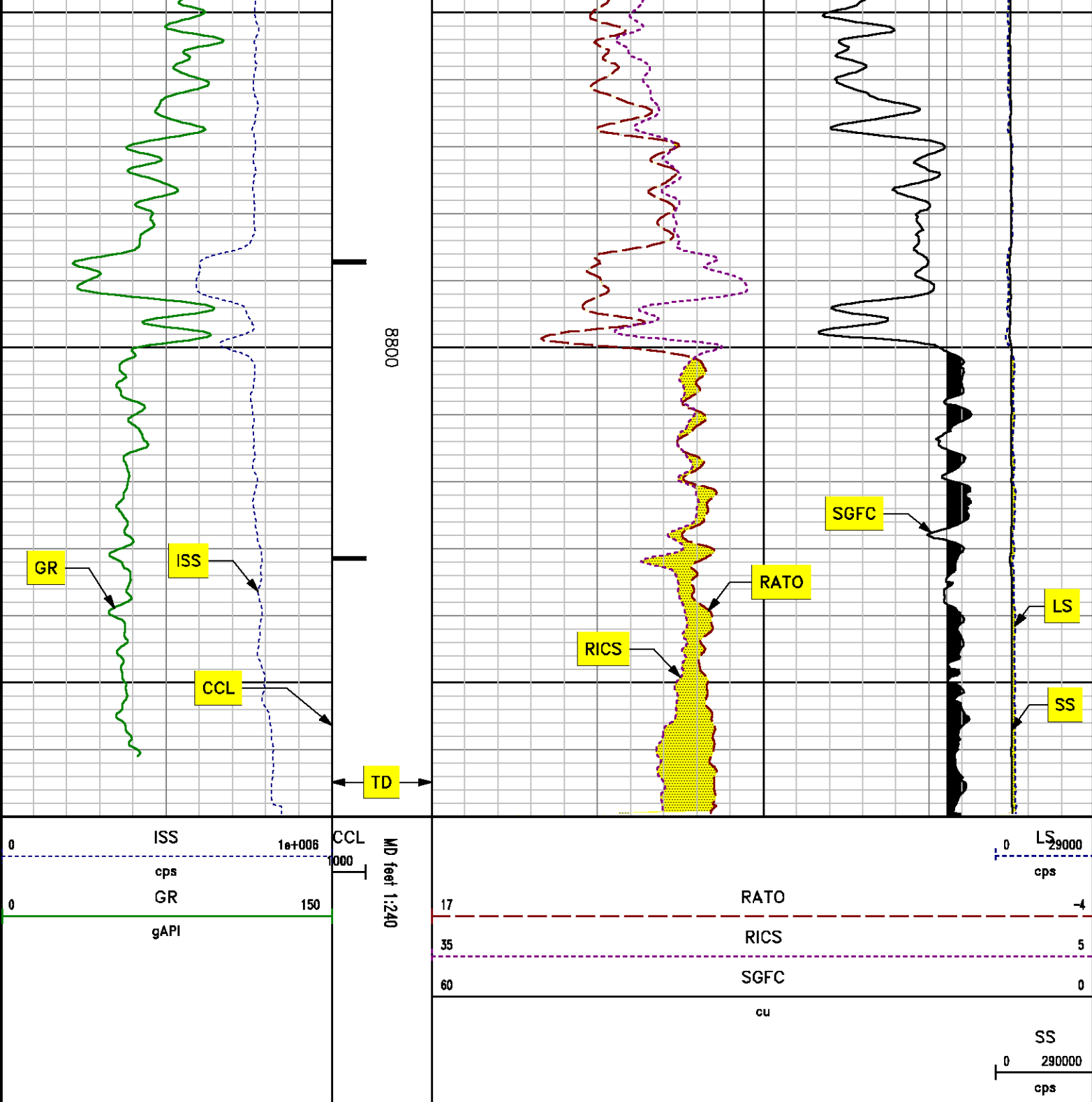












REPEAT LOG
PNC 3D MODE

SPL PROCESSING

MEASUREMENT TYPE	PARAMETER	VALUE	UNITS	TOP	BOTTOM
PNC Porosity	Borehole	Cased		8019.750	8355.000
PNC Porosity	Borehole Size	8.750	inch	8019.750	8355.000
PNC Porosity	Casing Size	4.500	inch	8019.750	8355.000
PNC Porosity	Gas Filled	Non Gas Filled		8019.750	8355.000
PNC Porosity	Matrix	Sandstone		8019.750	8355.000

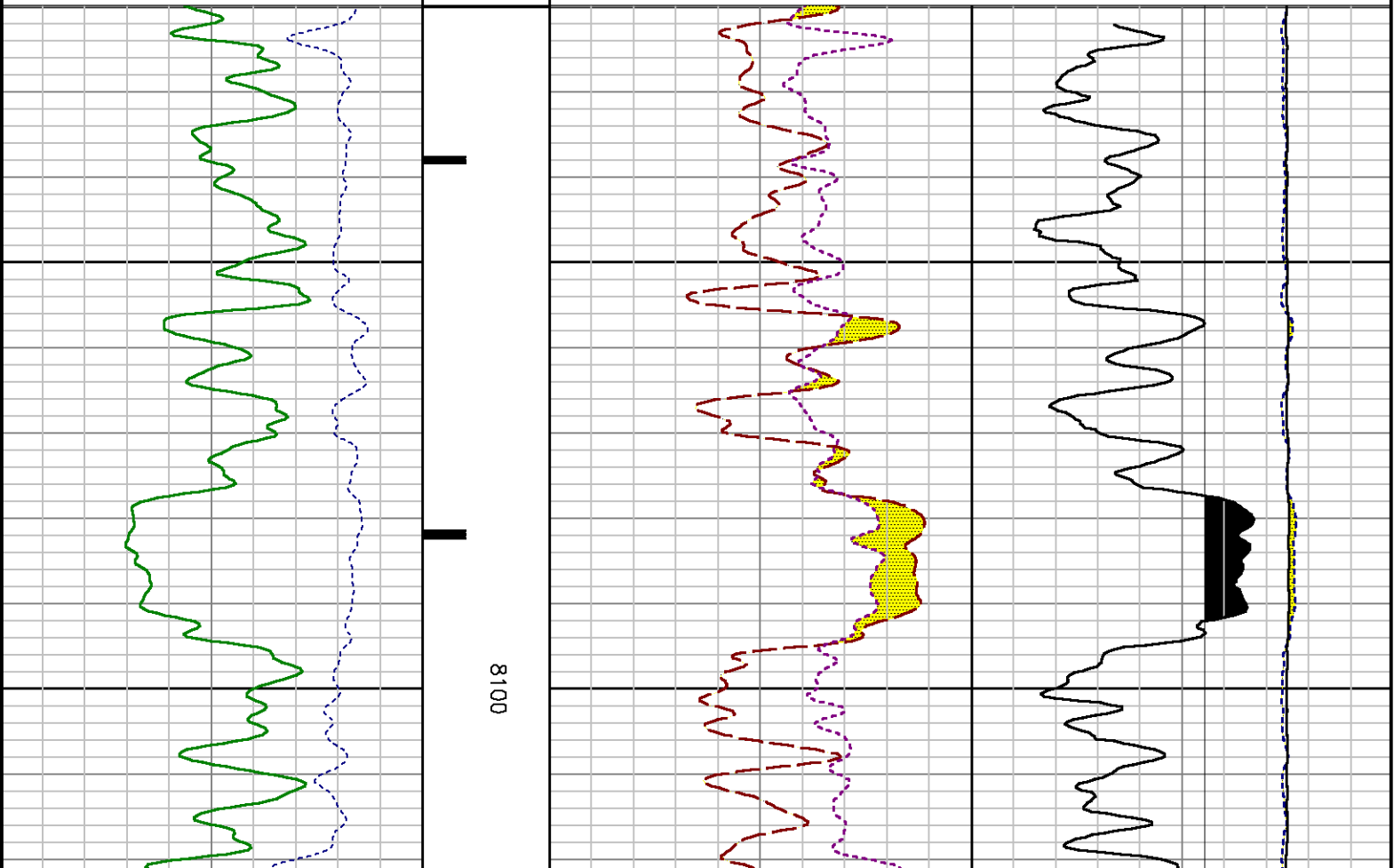
DEPTH OFFSETS

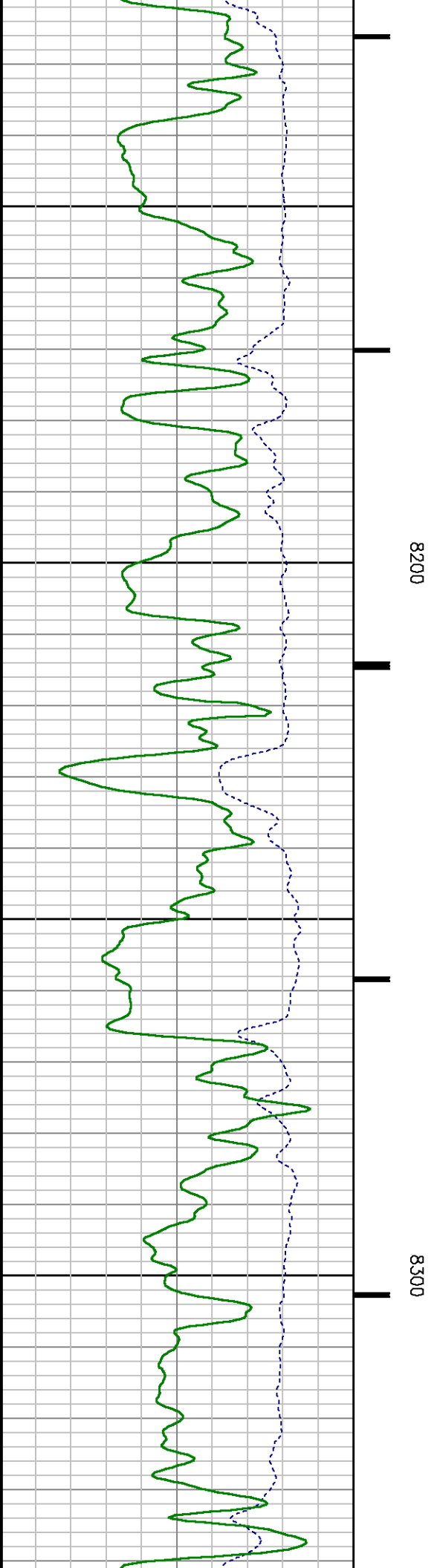
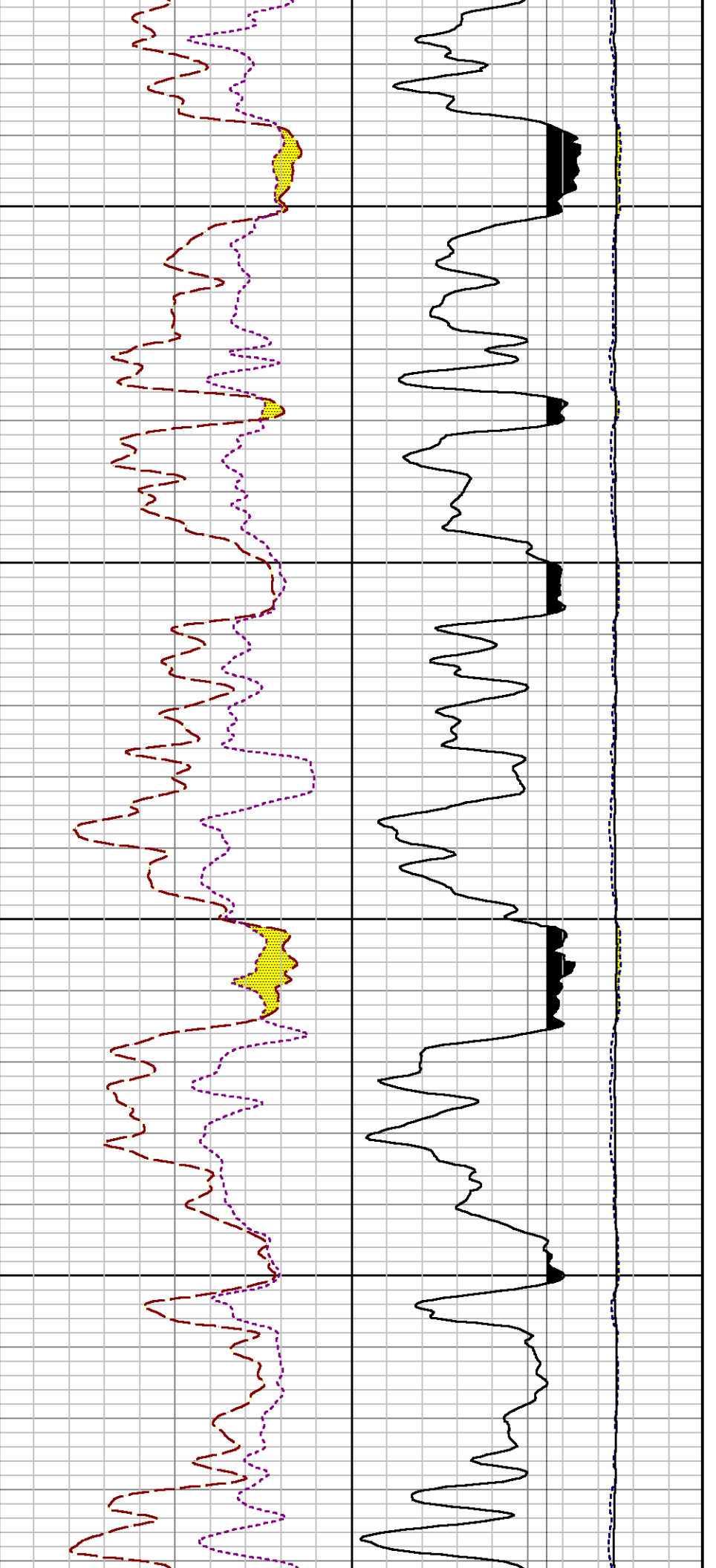
(for Acquired Curves)

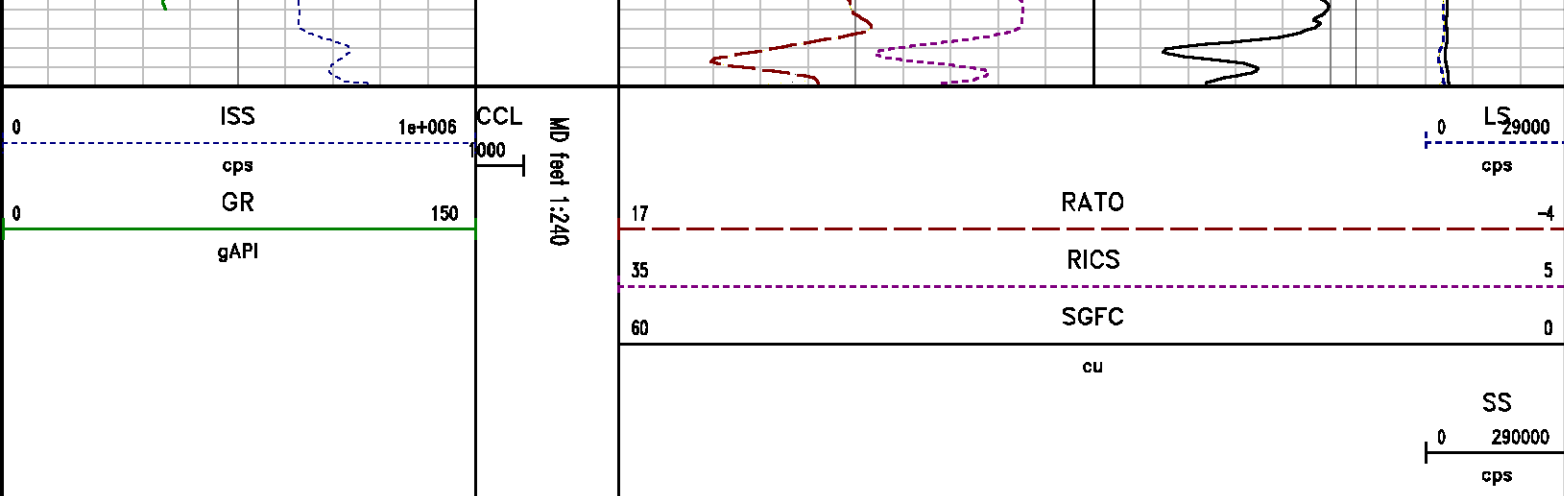
SERIES	DEPTH OFFSET	ACQUIRED CURVES					
8248EA	-15.320	FLTM					
8248EA	-13.320	CCL	CHV				
8262XY	-10.189	GR4					
8281XA	-0.662	HVC3Q0	SEQ3	AMA3	AML3	BKX	CXS
		CPT3Q0	CPT3Q2	CPT3Q3	CPT3Q4	ET3	IXS
		MCS3	MCS3Q0	QCAL3	RGN3	RICX	SDA3
		SDL3	SGA3	SGL3	STA3	XS	ASPEC3
		AMB3	AMF3	CHF3	IXSC	IXSN	RAT023
		RICXC	RIN13C	RIN23	RIN23C	SD3D	SG3D
		SGB3	SGF3	WDTH3	CXSR	IXSR	XSR
		RICXR					
8281XA	-0.250	HVC2Q0	SEQ2	AMA2	AMB2	AMF2	AML2
		BKL	CHF2	CLS	CPT2Q0	CPT2Q2	CPT2Q3
		CPT2Q4	ET2	ILS	LS	MCS2	MCS2Q0
		QCAL2	RGN2	RICL	RONE23	RTW023	SDA2
		SDL2	SGA2	SGB2	SGF2	SGK2	SGL2
		STA2	ASPEC2	ILSC	ILSN	WDTH2	RICLC
		CLSR	ILSR	LSR	RICLR		
8281XA	0.000	CPRS	HVC1Q0	MV	SEQ	SEQ1	AMA1
		AMB1	AME1	AMF1	AML1	BKS	CHF1
		CSS	CORB	CORF	CPT1Q0	CPT1Q2	CPT1Q2A
		CPT1Q2B	CPT1Q2C	CPT1Q3	CPT1Q4	CPT1Q5	ET1
		G1	G2	GE1S	GE2S	ISS	MCS1
		MCS1Q0	QA1	QCAL1	QM1	RAT0	RAT013
		RBOR	RGN1	RICS	RIN	RONE	RPOR
		RTW0	RIN13	RONE13	RTW013	SALB	SC1
		SDA1	SDL1	SGA1	SGB1	SGBC	SGE1
		SGF1	SGFC	SGK1	SGL1	SS	SS2
		STA1	PD1S	PD2S	PD3S	MD1S	MD2S
		MD3S	DG1S	DG2S	DG3S	PD1M	PD2M
		PD3M	MD1M	MD2M	MD3M	DG1M	DG2M
		DG3M	MVS	MA	MVM	FILV	IAM
		TA	PVM	PVS	IAS	SSTAT	QPD1
		QPD2	QPD3	QMD1	QMD2	QMD3	QDG1
		QDG2	QDG3	QMA	QTA	QFILV	QMV

SYSTEM 0.000

0	ISS	1e+006	CCL	MD feet 1:240	0	LS	29000
	cps		1000			cps	
0	GR	150			17	RATO	-4
	gAPI				35	RICS	5
					60	SGFC	0
						cu	
							SS
						0	290000
							cps







CALIBRATION SUMMARY

GAMMA RAY (GR4)

Calibration File: C:\case\calver\GR\470A2.cal

CALIBRATION SUMMARY

DATE/TIME PERFORMED:		Mon Apr 29 11:12:46 2013		TOOL SERIES:		8262XY		ASSET:		470		SEQ:		A2	
Calibrator #		Background [cps]		Calibrator On [cps]		Multiplicative		Background [api]		Calibrator On [api]		Differential [api]			
SHOP JIG		97.44		451.09		0.509		49.60		229.60		180.00			

Verification File: C:\case\calver\GR\470A2.VP

PRIMARY VERIFICATION

DATE/TIME PERFORMED:		Mon Apr 29 11:17:44 2013		TOOL SERIES:		8262XY		ASSET:		470		SEQ:		A2	
Calibrator #		Background [cps]		Calibrator On [cps]		Multiplicative		Background [api]		Calibrator On [api]		Differential [api]			
SHOP JIG		95.80		457.82		0.509		48.76		233.02		184.26			

PNC #2

Calibration File: C:\case\calver\PNC\151A5.cal

PNC 3D CALIBRATION SUMMARY

DATE/TIME PERFORMED:		Mon Apr 15 14:56:54 2013		TOOL SERIES:		8281XA		ASSET:		151		SEQ:		A5	
----------------------	--	--------------------------	--	--------------	--	--------	--	--------	--	-----	--	------	--	----	--

Calibrator #

Source #

SHOP BARREL

8281AA 11765055

	ISS	Mtr Vltz (V)	SS Gain	LS Gain	XLS Gain	EA Temp (degF)	Sync Delay (usec)	RCAL
Raw Data	817644	131.00	2260.00	2361.00	2439.00	105.74	8.00	0.9649
Interpolated	1300000	154.27	2246.64	2357.92	2425.40			

	ISS	BKS	BKL	BKX	SGA1	SDA1	SGA2	SDA2
Raw Data	817644	6800.04	1052.78	145.31	25.86	0.14	24.24	0.28
					25.35 26.40	0.00 0.20	23.60 24.80	0.00 0.40

	ISS	ILS	IXS	SS	SS2	LS	CSS	CLS
Raw Data	817644	168063.84	26013.26	90652.30	32248.90	8276.82	54856.68	13245.76
Fit Quality %		0.92	0.89	1.08	1.06	0.97	0.98	0.94

	ISS	RBOR	RIN ISS/ILS	RIN13 ISS/IXS	RICS ISS/CSS	RATO SS/LS	RTWO SS2/LS	RONE CSS/CLS
Raw Data	817644	1.43	4.87	31.43	14.91	10.95	3.90	4.14
		1.42 1.45	3.55 5.52	22.20 32.70	10.99 16.34	10.06 11.10	3.57 3.95	3.76 4.22
Fit Quality %		0.05	0.19	0.20	0.10	0.10	0.11	0.09
Reduced	1413216	1.43	4.87	31.48	14.95	10.94	3.89	4.14
		1.42 1.45	4.33 5.52	27.60 32.70	13.70 16.34	10.06 11.10	3.57 3.95	3.76 4.22

TOOL DIAGRAM

OTA SHORT CABLE HEAD

PCM POWER SUPPLY

Series	8250EA
Mnemonic	PCM
Diameter	1.70"
Weight	18.00 lb
Length	3.86'
Temp Rating	350.00 °F

TELEMETRY / CCL

Series	8248EA
Mnemonic	PCM
Diameter	1.70"
Weight	20.00 lb
Length	4.46'
Measure Point	1.00' CCL MP
Temp Rating	350.00 °F

30.92'

CCL MP 22.83'

Press Rating	15000.00 PSI
GAMMA RAY	
Series	8262XA
Mnemonic	GR
Diameter	1.70"
Weight	15.00 lb
Length	3.17'

GR MP — 19.29'

RESERVOIR PERFORMANCE MONITOR	
Series	8281XA
Mnemonic	RPM
Diameter	1.70"
Weight	75.00 lb
Length	18.58'
Measure Point	9.49' SS DETECTOR
Measure Point	9.72' LS DETECTOR
Measure Point	12.69' XLS DETECTOR
Temp Rating	350.00 °F
Press Rating	20000.00 PSI

XLS DETECTOR — 12.78'

LS DETECTOR — 9.80'
SS DETECTOR — 9.58'

0.00'

Total Length: 30.92'
Total Weight: Not Available
Max Diameter: 0' 1.70"



Baker Atlas



Company	WPX ENERGY
Well	HOEPPLI RWF 333-36
Field	RULISON
County	GARFIELD State COLORADO

File No:
CH072042
API No:
05045215470000

Location	Elevations
SHL: 2584' FNL & 2582' FEL	KB 6554 ft
BHL: 2156' FSL & 1779' FEL	DF
	GL 6528 ft
SEC 36 TWP 6S RGE 94W	

36 6S 94W
RWF 33-36
NABORS SSD 576