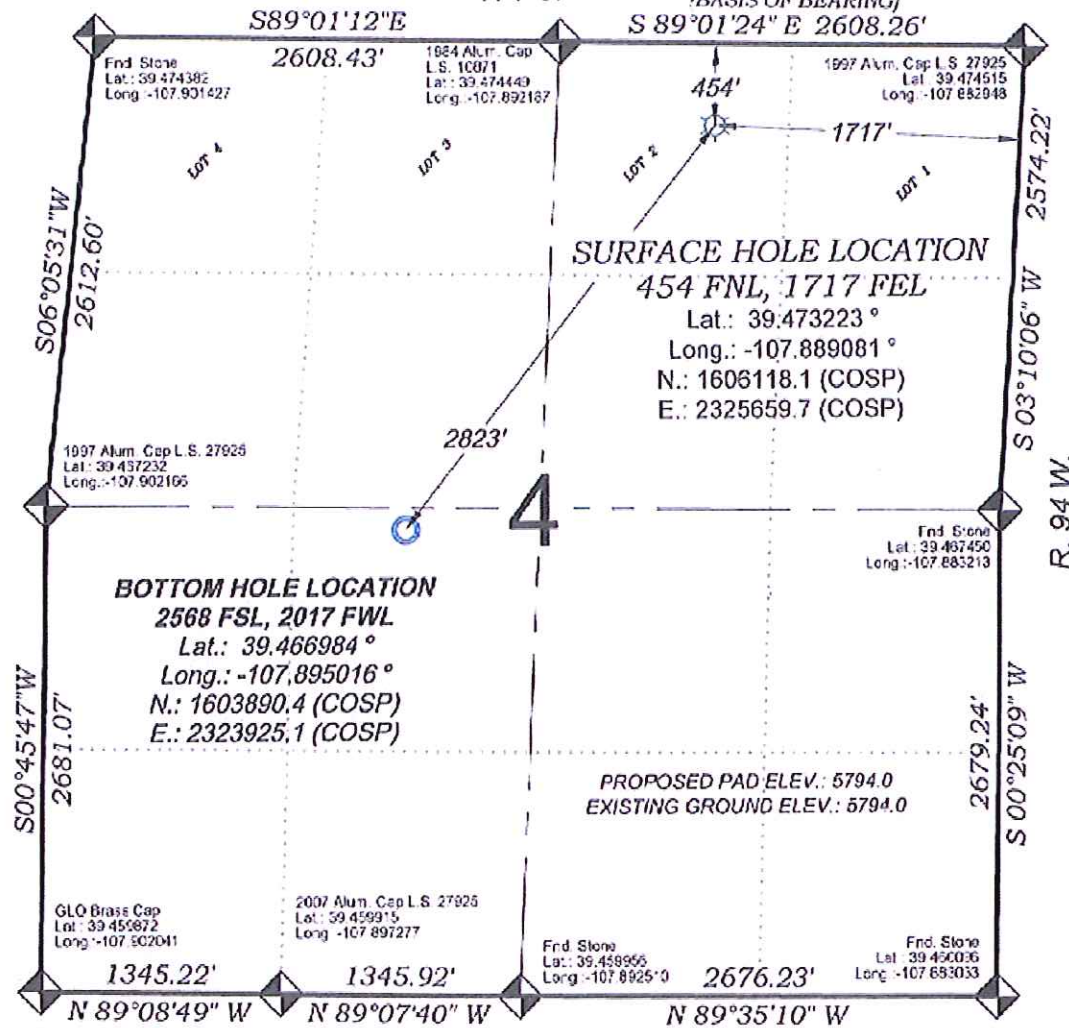
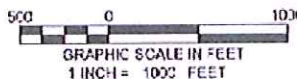


# WPX Energy RWF 523-4

T. 7 S.



SEE CONSTRUCTION LAYOUT  
 PLAT FOR VISIBLE IMPROVEMENTS  
 WITHIN 400' OF THIS LOCATION



## - LEGEND -

FIELD LOCATED SECTION  
 MONUMENTS AS DESCRIBED

FIELD SURVEYED  
 WELL LOCATION

CALCULATED BOTTOM  
 HOLE LOCATION

CALCULATED SECTION  
 CORNER LOCATION

## SURVEYORS STATEMENT

I, MICHAEL J. LANGHORNE, A REGISTERED LAND SURVEYOR IN THE  
 STATE OF COLORADO DO HEREBY CERTIFY THAT THE SURVEY SHOWN  
 HEREON WAS PREPARED UNDER MY DIRECT SUPERVISION AND HAS  
 BEEN STAKED ON THE GROUND AS SHOWN ON THE PLAT AND  
 CHECKING THAT THIS MAP IS A TRUE REPRESENTATION THEREOF.

MICHAEL J. LANGHORNE, COLORADO REGISTRATION NO. 36572  
 FOR AND ON BEHALF OF  
 BOOKCLIFF SURVEY SERVICES, INC.

## REFERENCES

- 1) EXTENSION SURVEY T. 7 S., R. 94 W., 6 TH. P.M. (GLO PLAT)
- 2) U.S.G.S. QUAD. RULISON, CO

136 East Third Street  
 Rifle, Colorado  
 81550 Ph. (970)  
 625-2720 Fax (970)  
 625-2773

**BOOKCLIFF**  
 Survey Services, Inc.

SURVEY DATE: 7/14/11  
 MAP DATE: 4/30/13  
 SCALE: 1" = 1000'  
 PLAT: 1 of 1  
 PROJECT: Valley

## NOTES

- 1) ELEVATIONS BASED ON N.A. V.D. 1988 PUBLISHED COORDINATES.
- 2) LATITUDES AND LONGITUDES ARE BASED ON NAD 83, PUBLISHED COORDINATES
- 3) STATE PLANE COORDINATES ARE BASED ON COLORADO CENTRAL ZONE, U.S. SURVEY FEET.
- 4) ELEVATION MASK SET TO 15"
- 5) OPS OPERATOR J. KIRKPATRICK, OBSERVED A PDOP 1.8 ON SURVEY POINT NUMBER 305160.
- 6) SURFACE AND BOTTOM HOLE LOCATIONS ARE MEASURED 90° FROM SECTION LINES

**WELL LOCATION PLAT Prepared for:**  
**WPX ENERGY.** WPX Energy Rocky Mountain, LLC

NW1/4 NE1/4, SECTION 4  
 T. 7 S., R. 94 W. of the 6th. P.M.  
 GARFIELD COUNTY, COLORADO