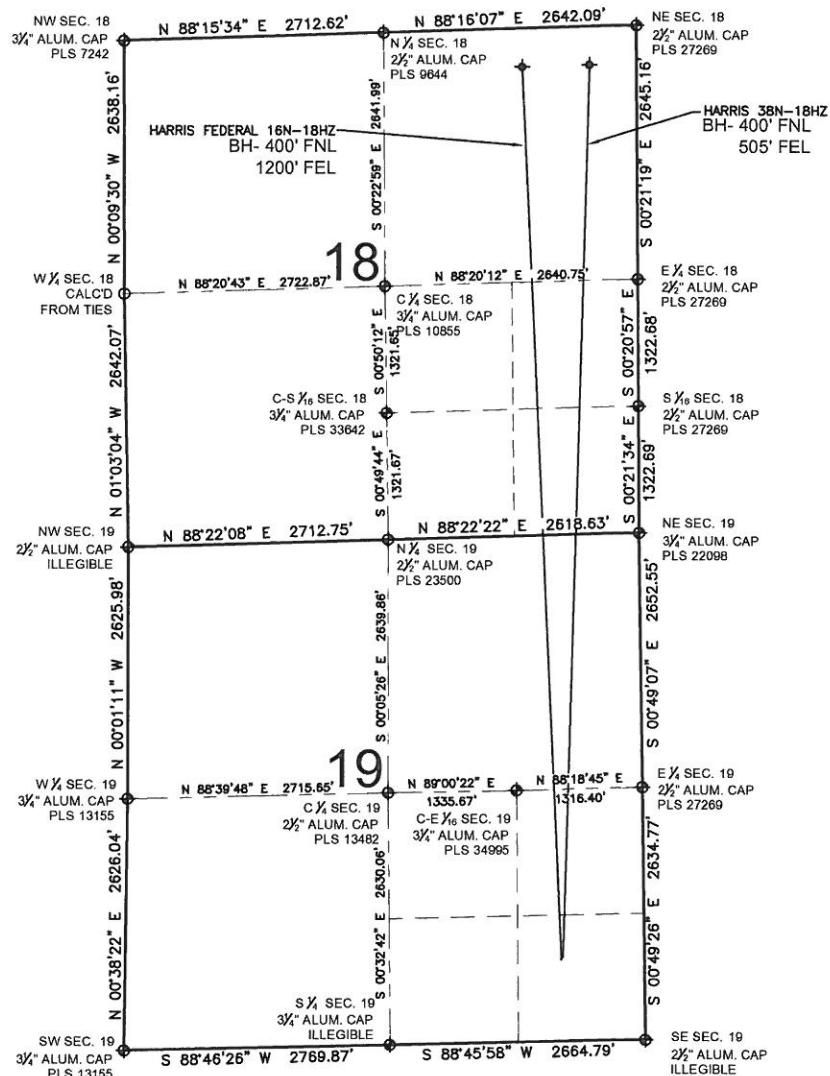


HARRIS FEDERAL 16N-18HZ MULTI-WELL PLAN

SECTION 19, TOWNSHIP 3 NORTH, RANGE 66 WEST, 6TH P.M.



NOTES:

HARRIS FEDERAL 16N-18HZ TO BE AT 855' FSL, 878' FEL.
BOTTOM HOLE AT 400' FNL & 1200' FEL.
HARRIS 38N-18HZ TO BE AT 880' FSL, 861' FEL.
BOTTOM HOLE AT 400' FNL & 505' FEL.

LEGEND

⊕ = EXISTING MONUMENT ♦ = BOTTOM HOLE BH= BOTTOM HOLE
• = PROPOSED WELL ♦ = EXISTING WELL

PREPARED BY:



KERR-MCGEE OIL & GAS ONSHORE LP

FIELD DATE:
03-18-13

DRAWING DATE:
04-08-13

SURFACE LOCATION:

SE 1/4 SE 1/4, SEC. 19, T3N, R66W, 6TH P.M.
WELD COUNTY, COLORADO

