



VDL CCL GAMMA-RAY  
CEMENT BOND LOG

Pioneer Energy Services

Company					KERR MCGEE OIL & GAS ONSHORE LP				
Well					DECHANT 9-19 A				
Field					WATTENBERG				
County					WELD				
State					COLORADO				
Company					KERR MCGEE OIL & GAS ONSHORE LP				
Well					DECHANT 9-19 A				
Field					WATTENBERG				
County					WELD				
State					COLORADO				
Location:					API # : 05123212020000				
SEC 19 TWP 2N RGE 66W					Elevation				
Permanent Datum					GL 4960'				
Log Measured From					KB				
Drilling Measured From					KB				
Date					APRIL 18/2013				
Run Number					ONE				
Depth Driller					7908'				
Depth Logger					4000'				
Bottom Logged Interval					4000'				
Top Log Interval					20'				
Open Hole Size					7 7/8"				
Type Fluid					WATER				
Density / Viscosity					NA				
Max. Recorded Temp.					235 DEG. F				
Estimated Cement Top					1070'				
Time Well Ready					NA				
Time Logger on Bottom					NA				
Equipment Number					9605				
Location					FT MORGAN				
Recorded By					TODD YOUNG				
Witnessed By					BILL SMITH				
Borehole Record					Tubing Record				
Run Number					Bit				
From					To				
Size					Weight				
From					To				
Casing Record					Size				
Surface String					Wgt/Ft				
Prot. String					Top				
Production String					Bottom				
Liner					4.5				
					11.6 #				
					SURFACE				
					4000'				

<<< Fold Here >>>

All interpretations are opinions based on inferences from electrical or other measurements and we cannot and do not guarantee the accuracy or correctness of any interpretation, and we shall not, except in the case of gross or willful negligence on our part, be liable or responsible for any loss, costs, damages, or expenses incurred or sustained by anyone resulting from any interpretation made by any of our officers, agents or employees. These interpretations are also subject to our general terms and conditions set out in our current Price Schedule.

Comments

SO#2-203817

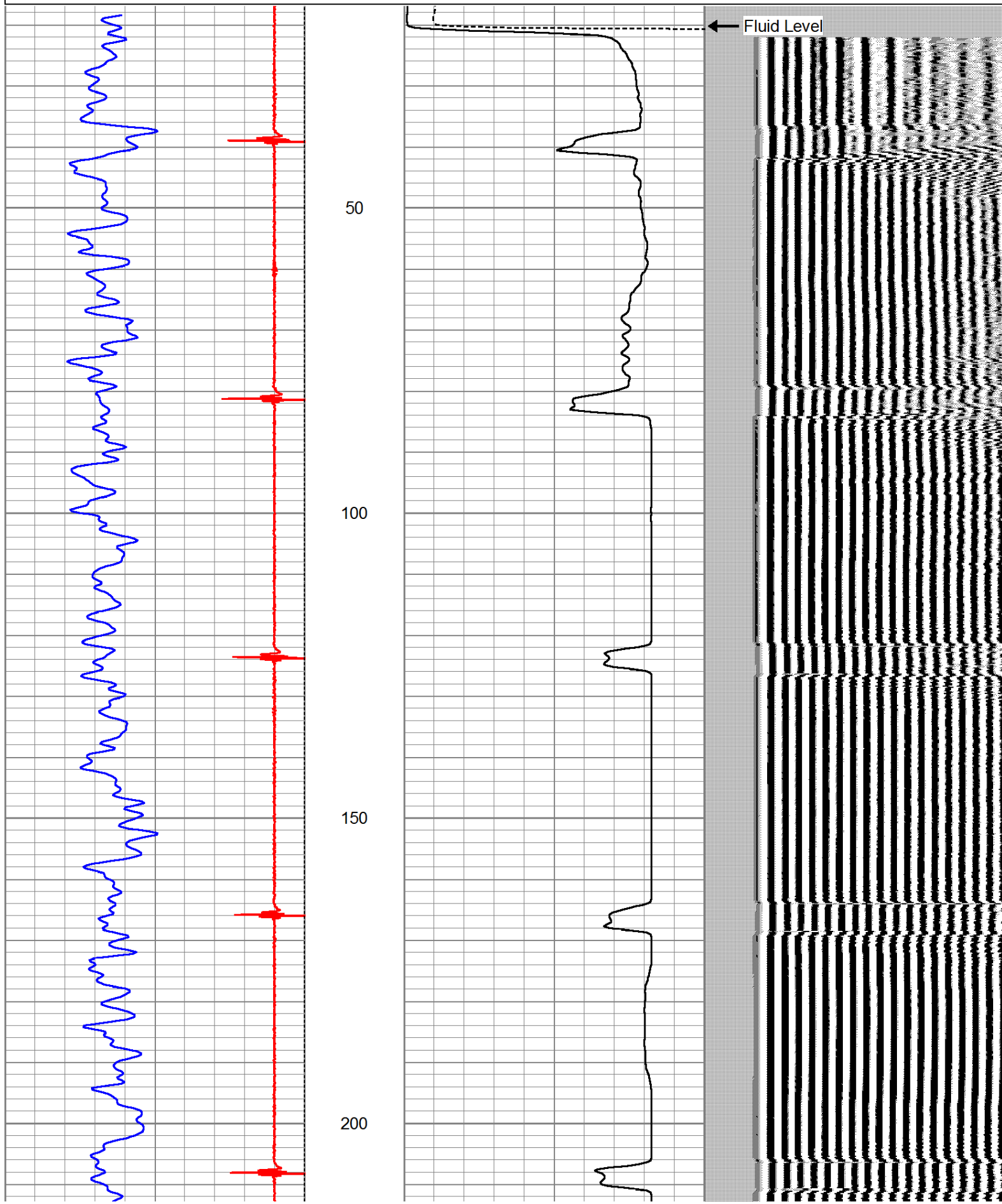
NOT CORRILATED

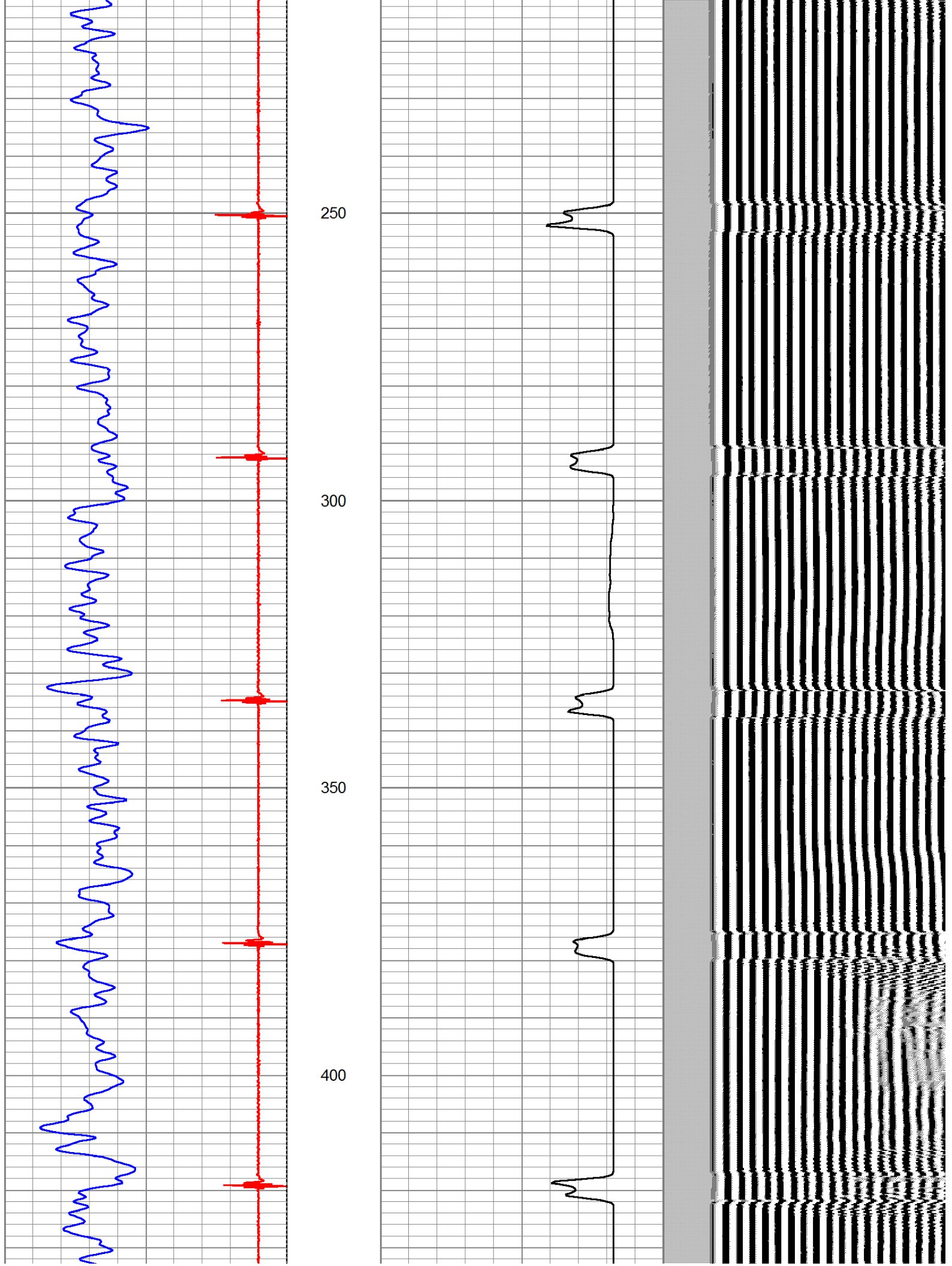
THANK YOU FOR USING  
PIONEER ENERGY SERVICES

Sensor	Offset (ft)	Schematic	Description	Len (ft)	OD (in)	Wt (lb)
CCL	19.31		CCL-titan01 (01t)	1.92	2.75	

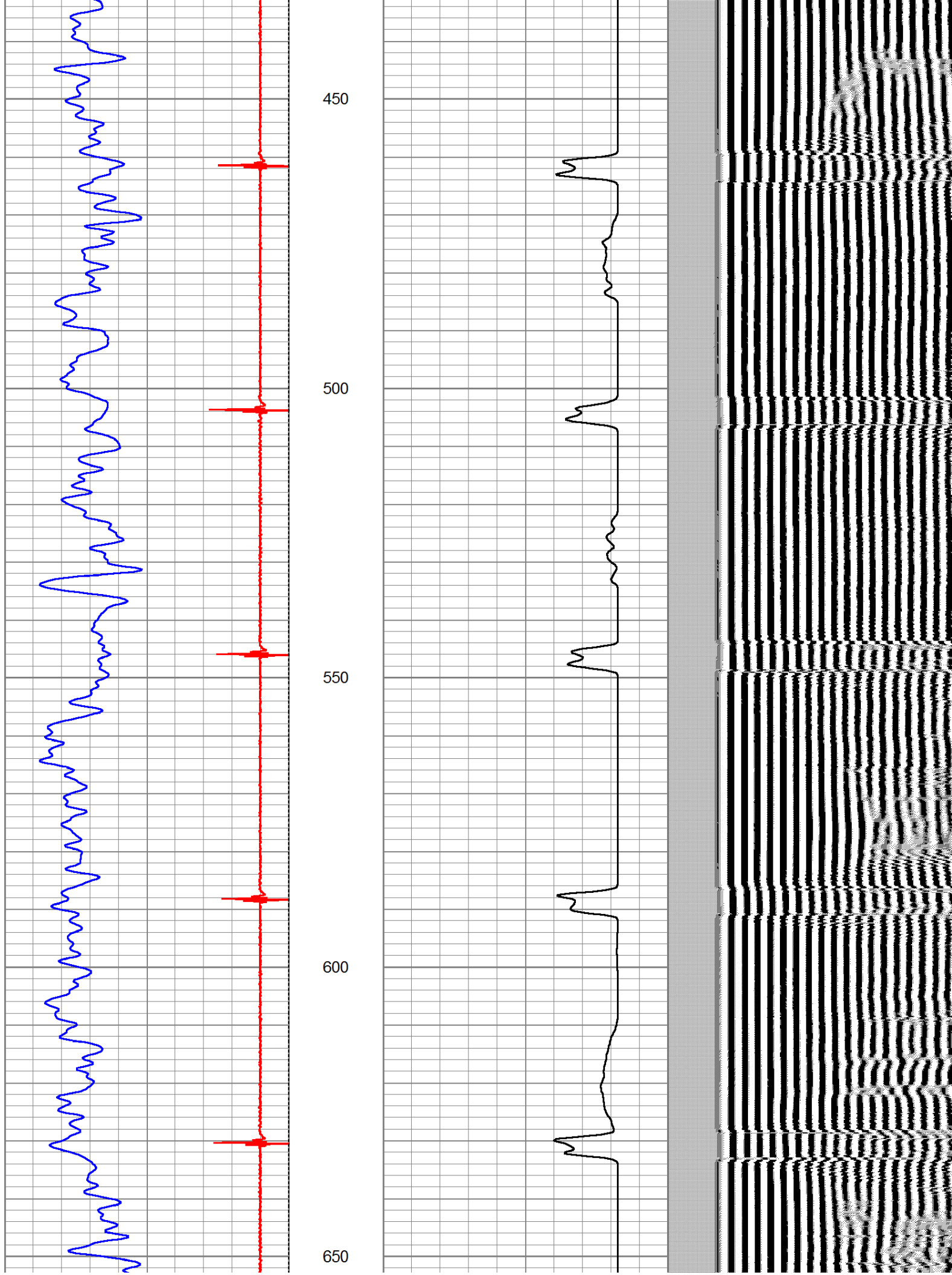
Tool Joint #	Tool Joint Description	Length (ft)	Weight (lb)	O.D. (in)
WVF3	SDSCENT Centralizer for testing	3.00	3.25	20.00
WVF5	CBL-Probe (050215) 2.75 digital probe	8.75	2.75	106.50
GR	SDSCENT Centralizer for testing	3.00	3.25	20.00
GR	GR-probe 2.75 (51013)	3.67	2.75	100.00
Dataset: dechant 9-19a.db: field/well/run1/pass2 Total Length: 20.33 ft Total Weight: 246.50 lb O.D. 3.25 in				

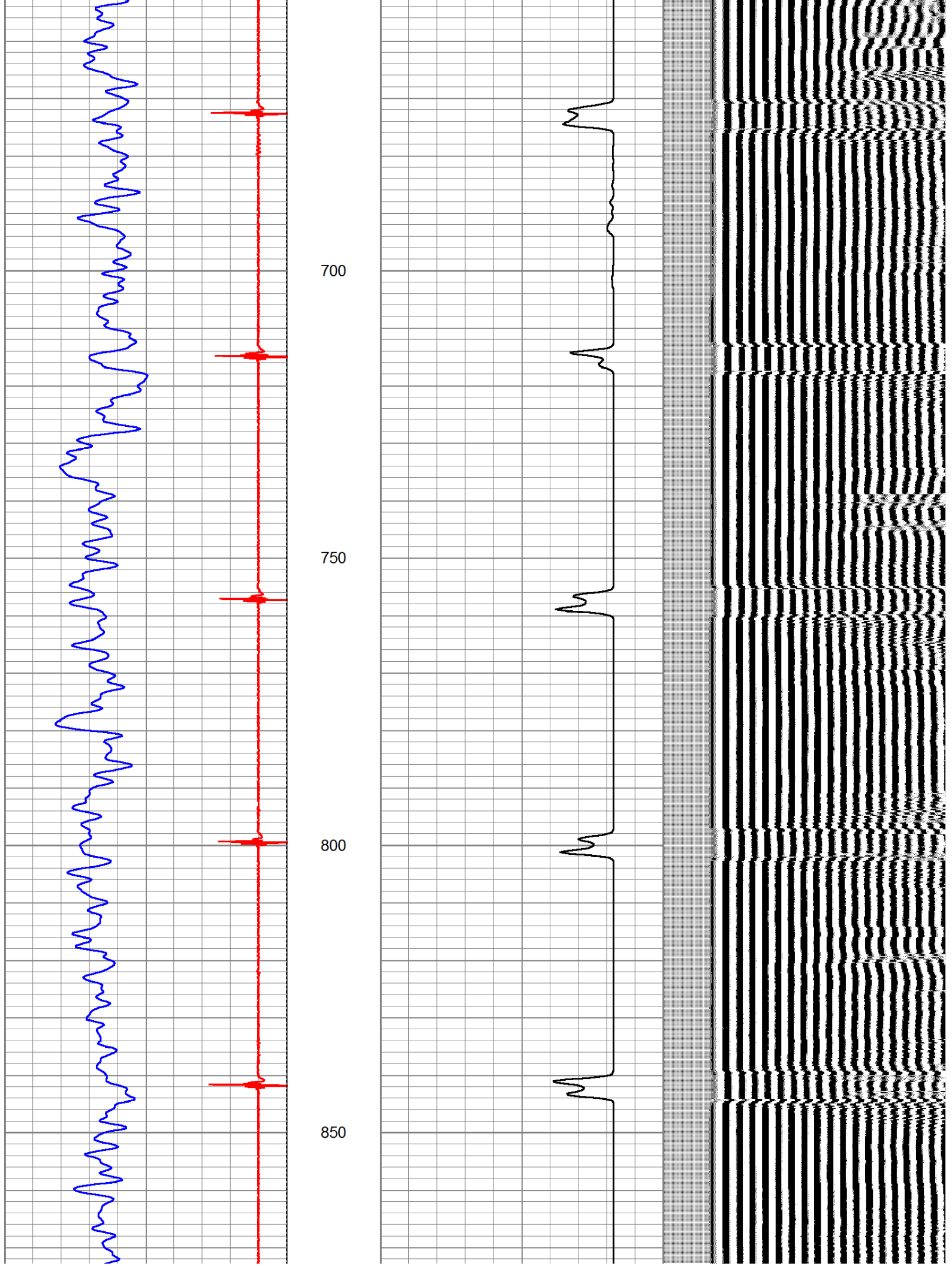
9	Collar Locator	-1	LTEN	0	Amplified Amplitude (mV)	10	200	Variable Density	1200
0	Gamma Ray (GAPI)	200	0 (lb)2000	0	Amplitude (mV)	100			

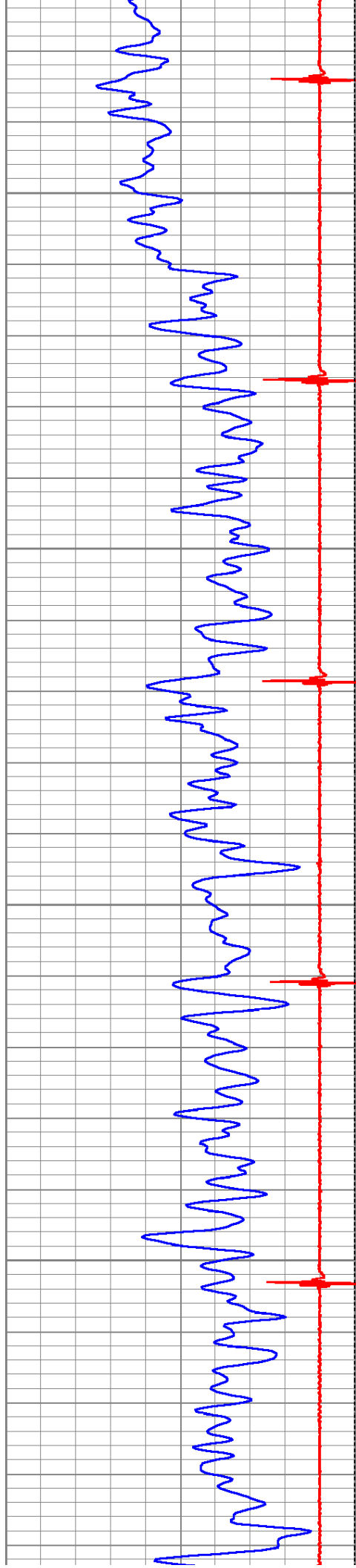










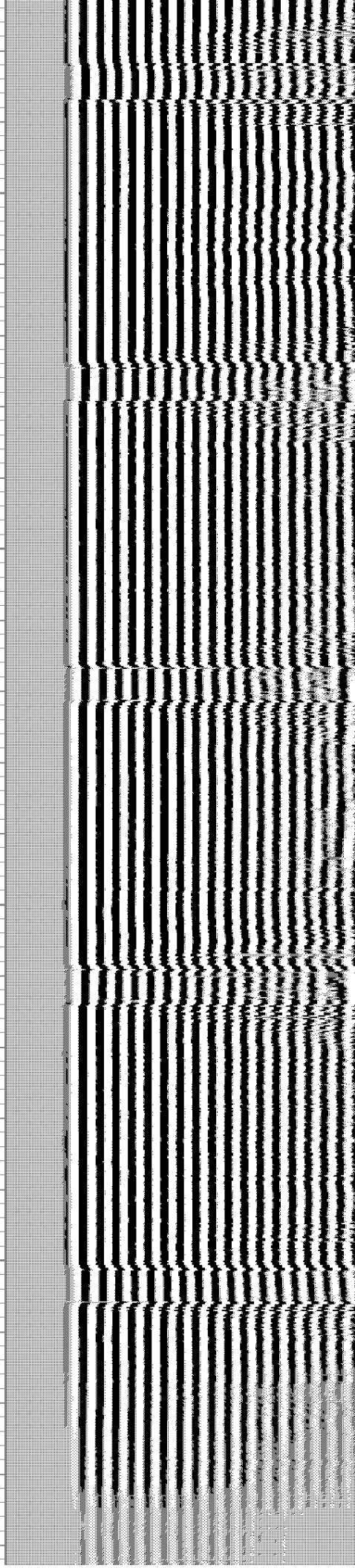
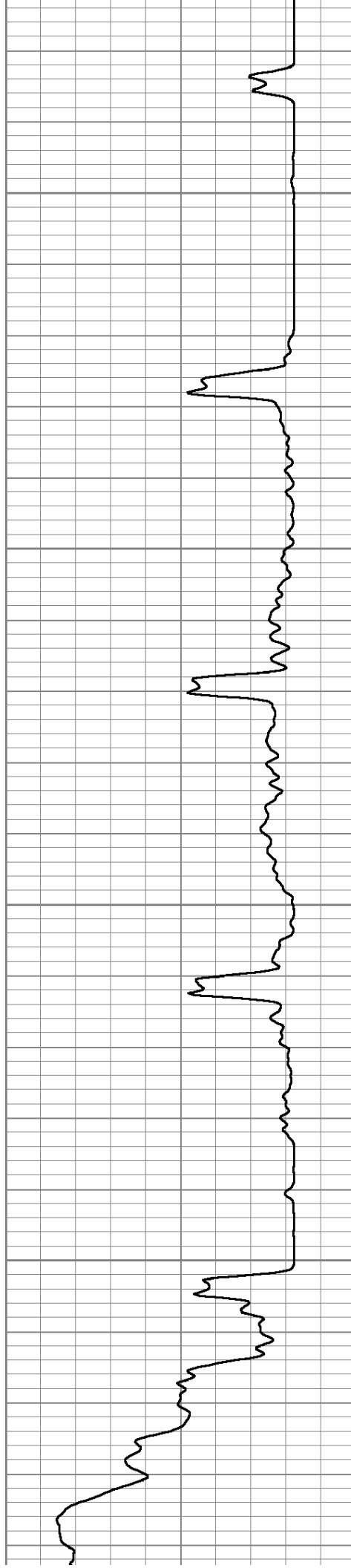


900

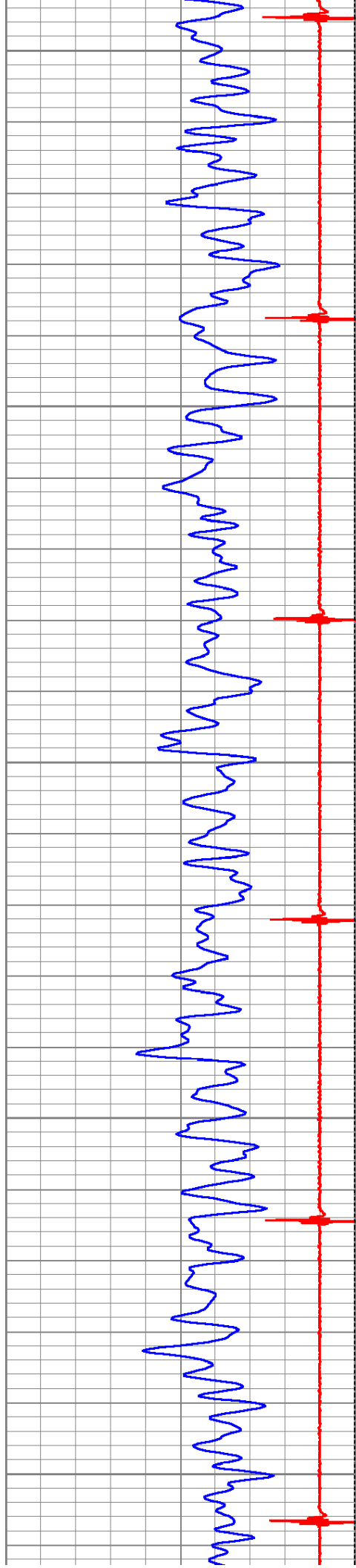
950

1000

1050







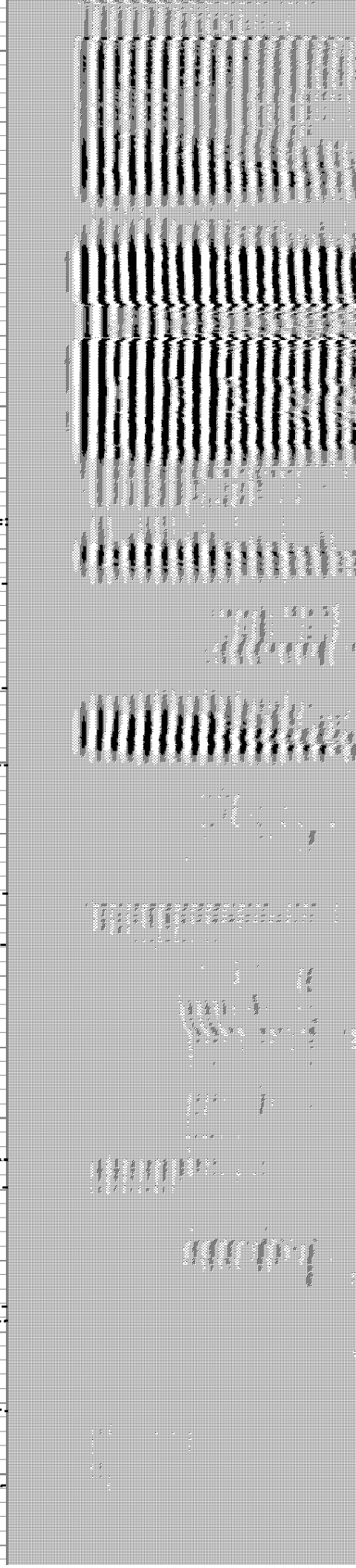
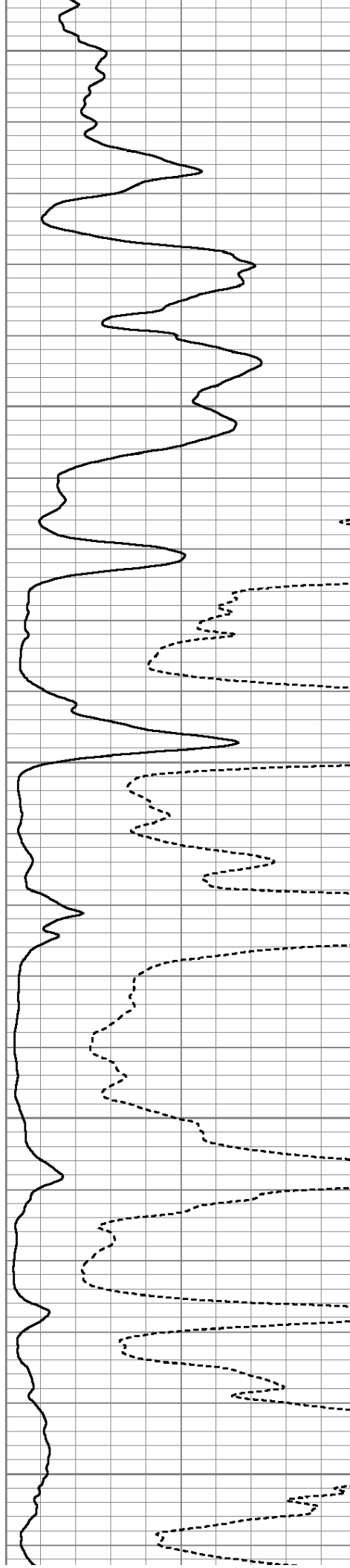
1100

1150

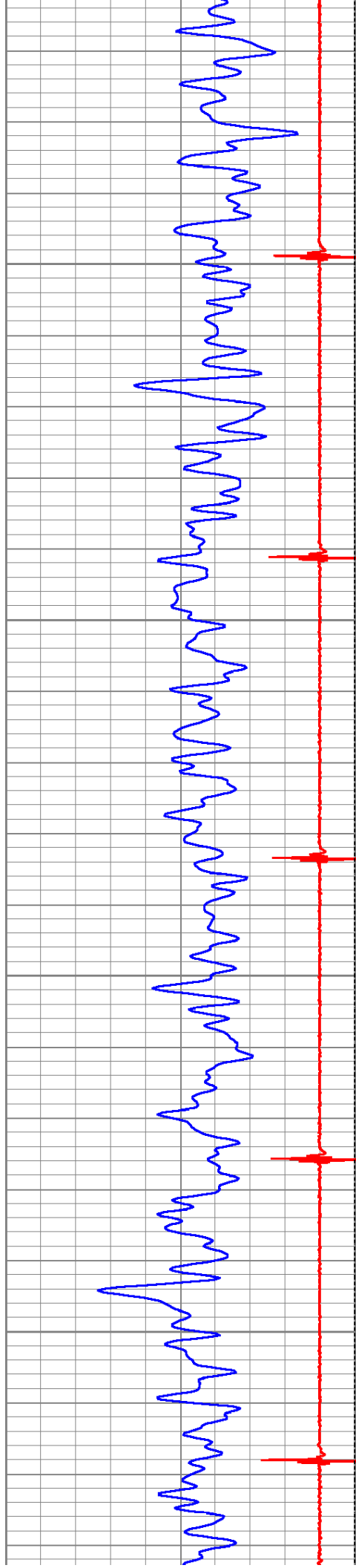
1200

1250

1300





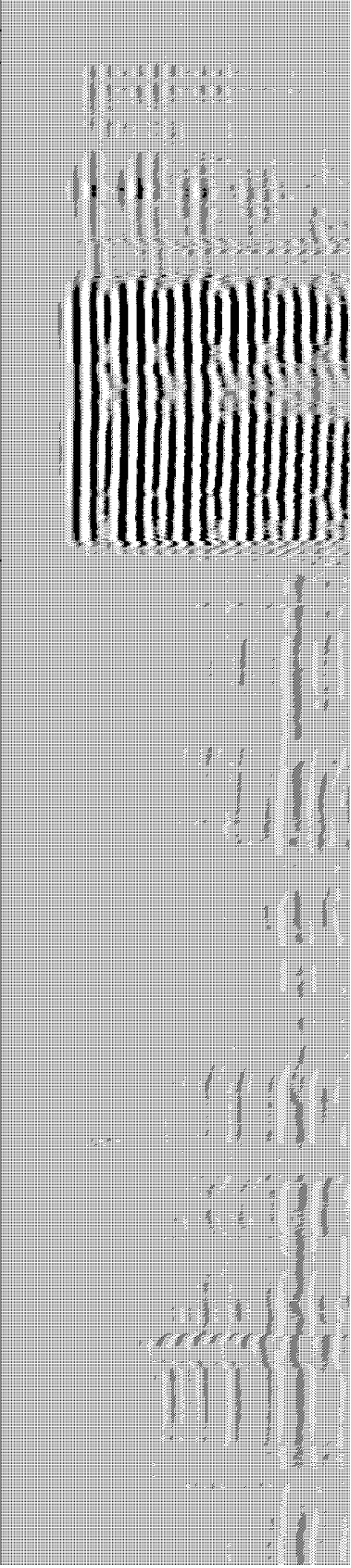
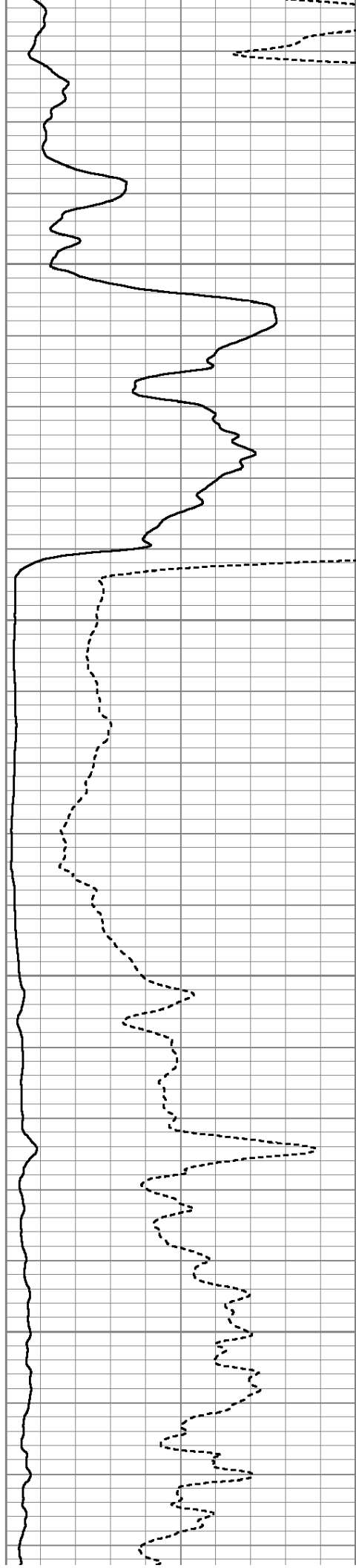


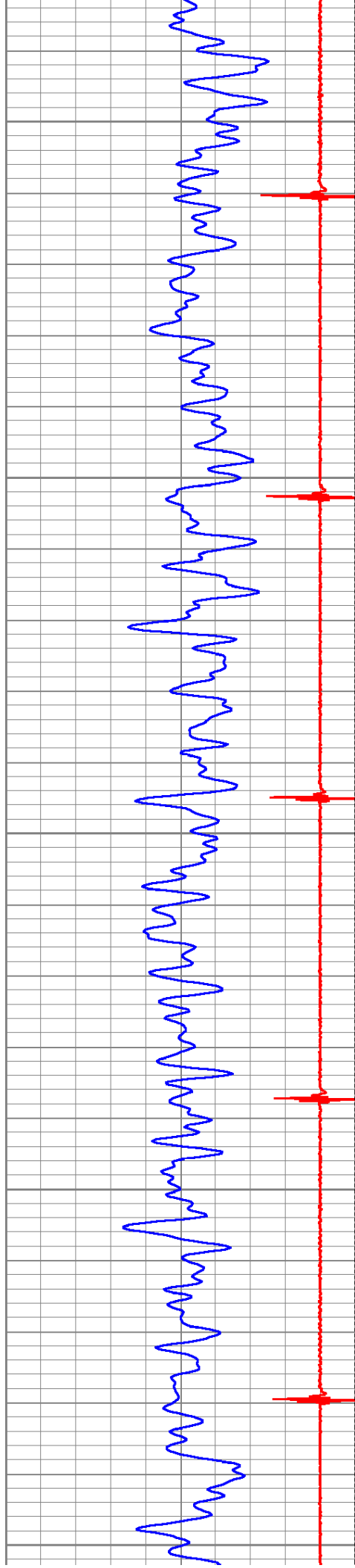
1350

1400

1450

1500





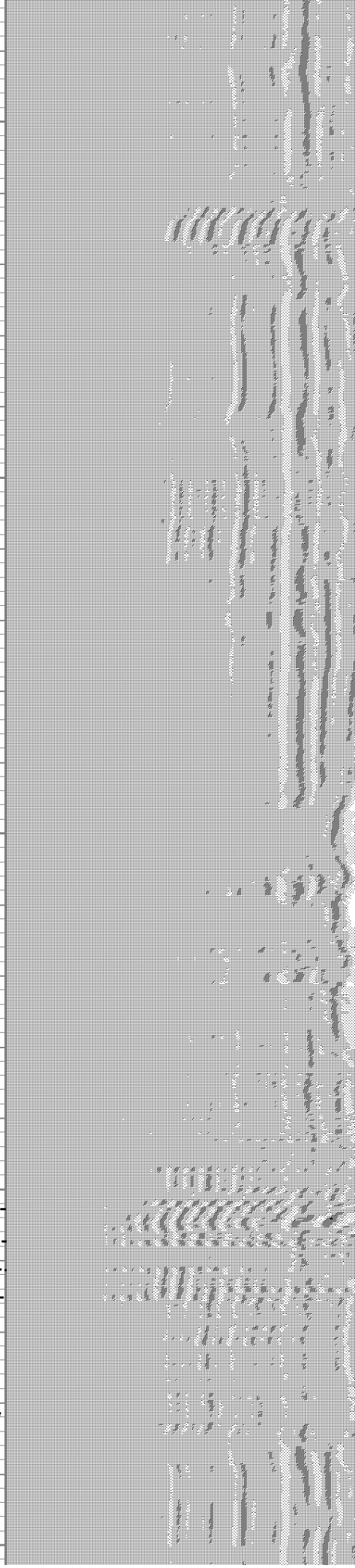
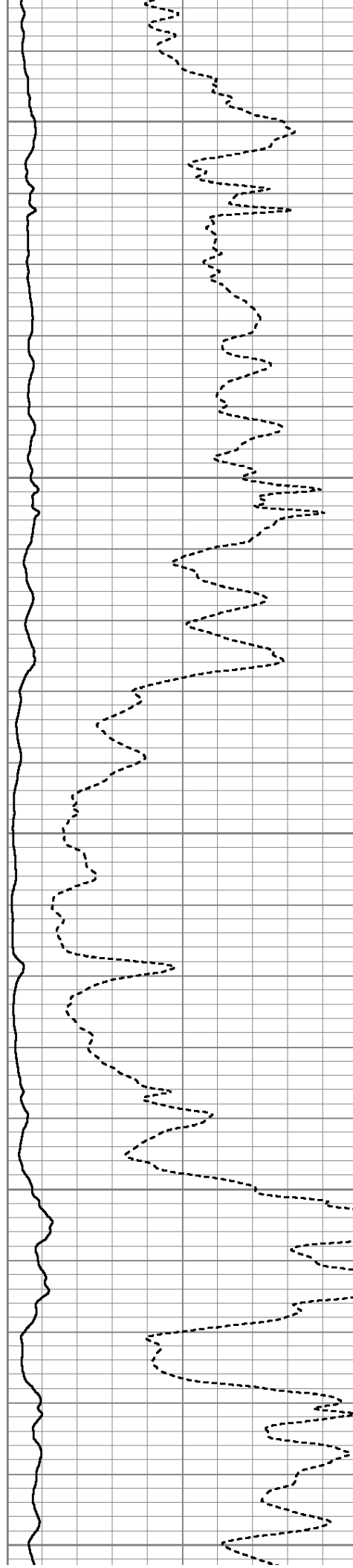
1550

1600

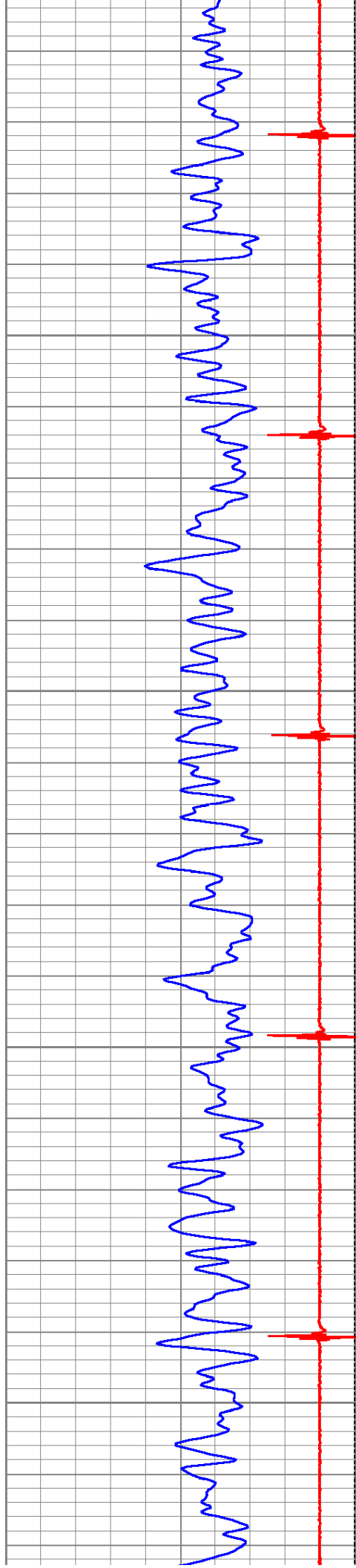
1650

1700

1750





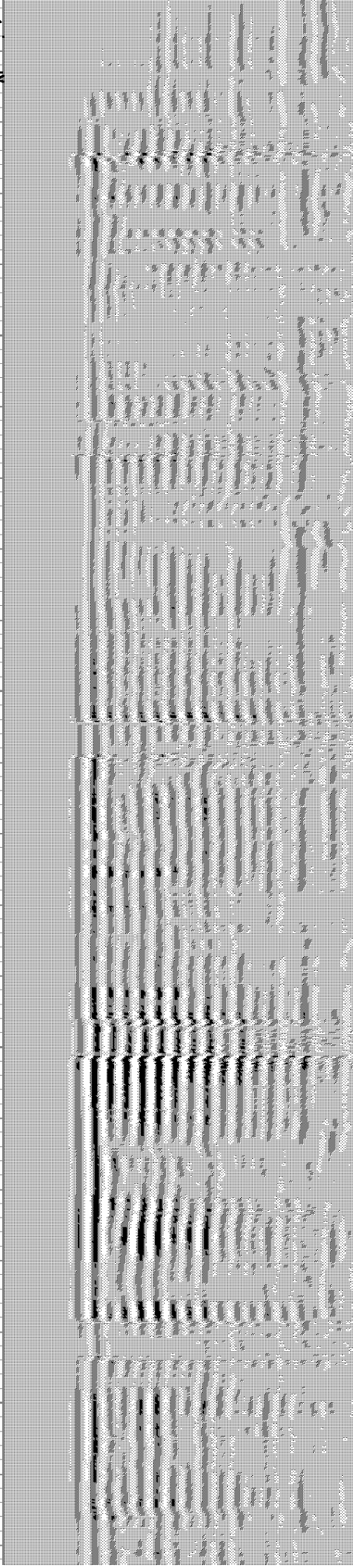
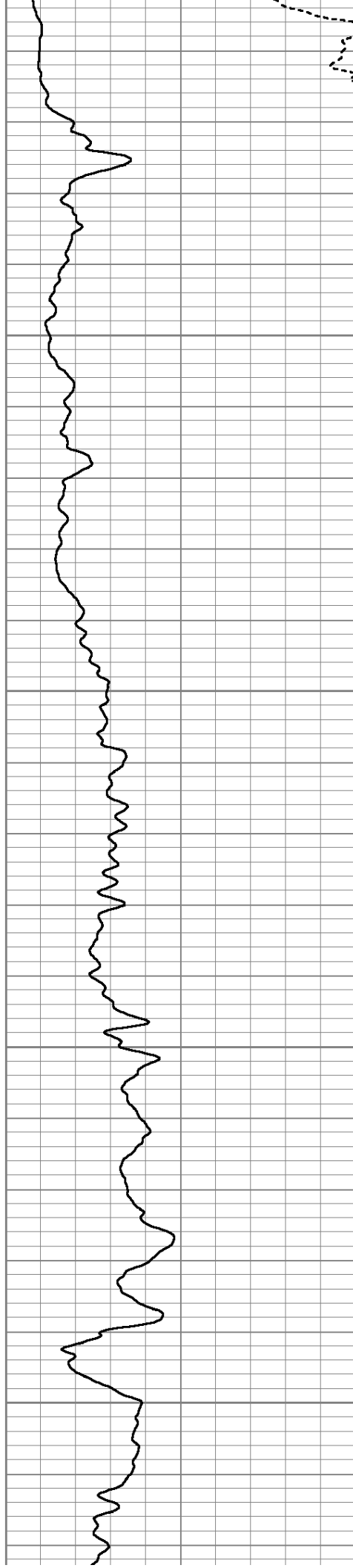


1800

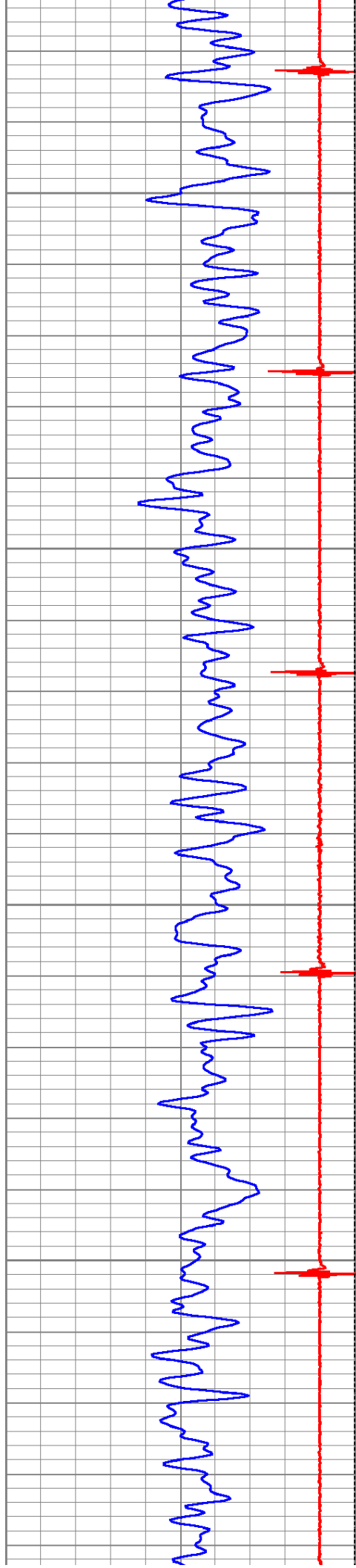
1850

1900

1950





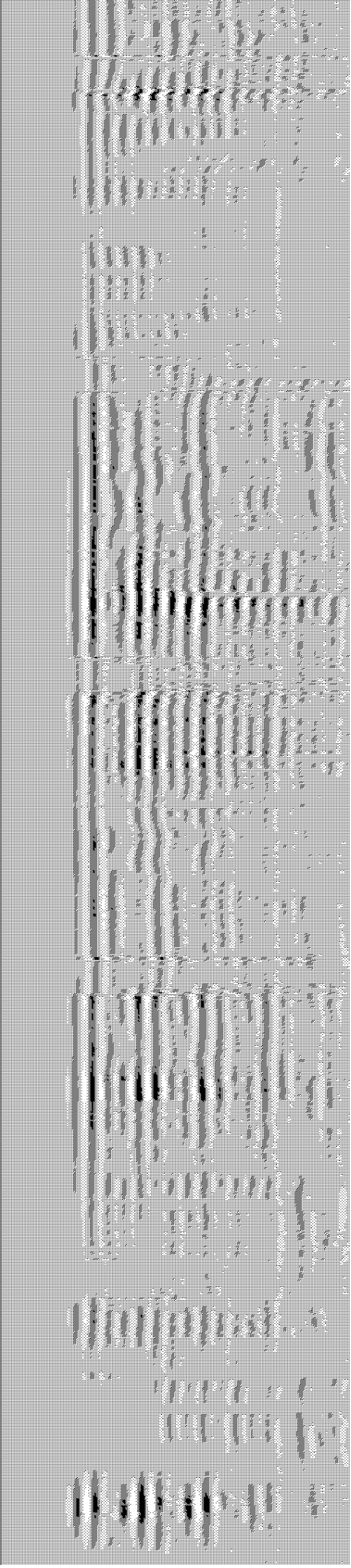
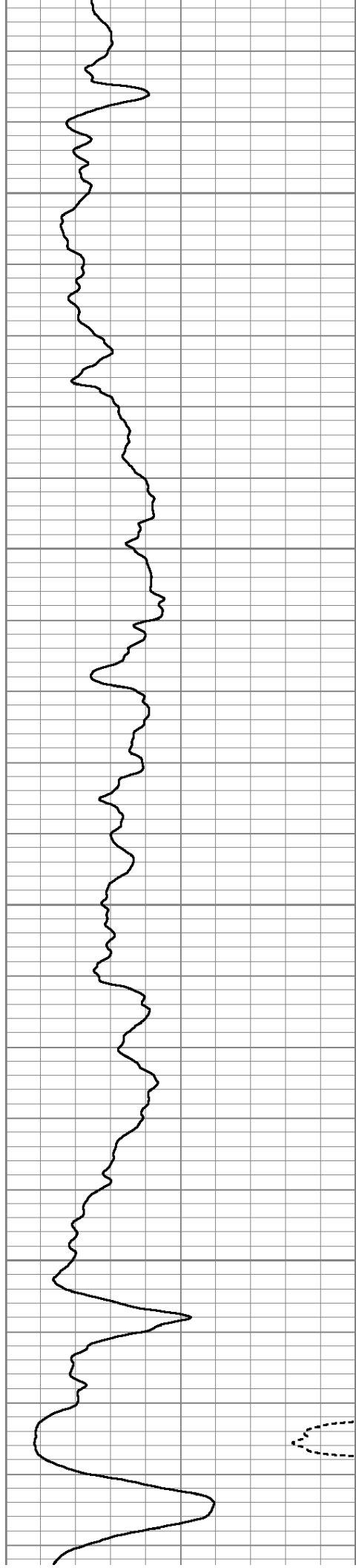


2000

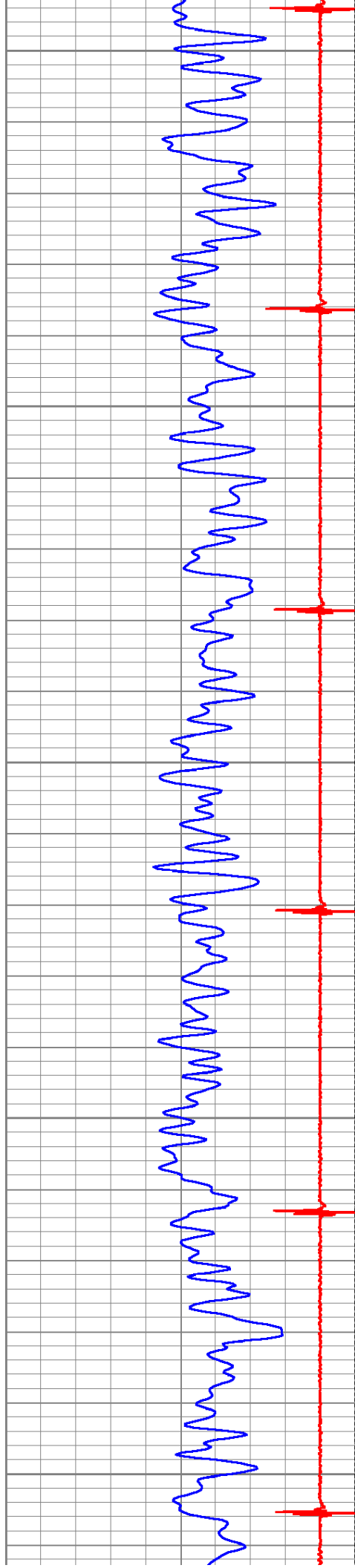
2050

2100

2150







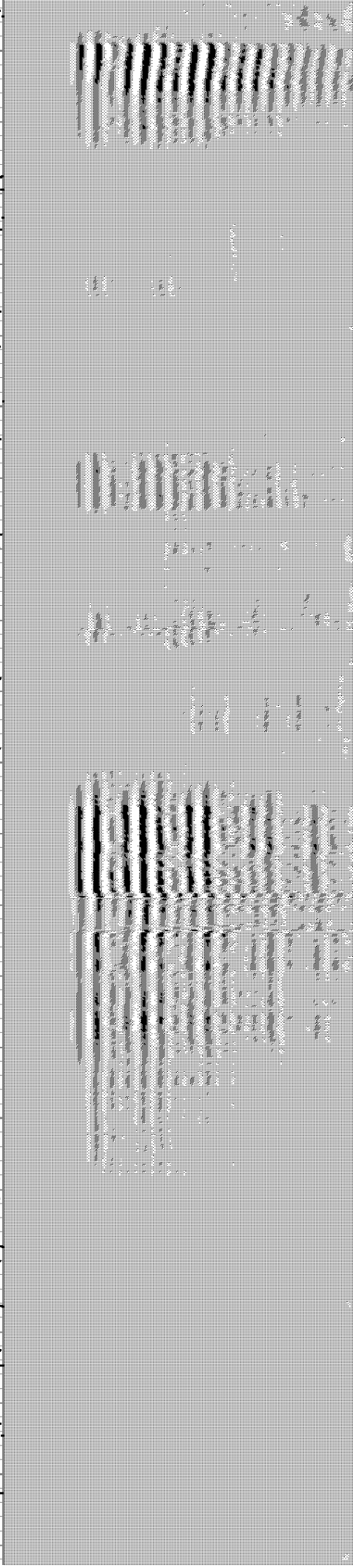
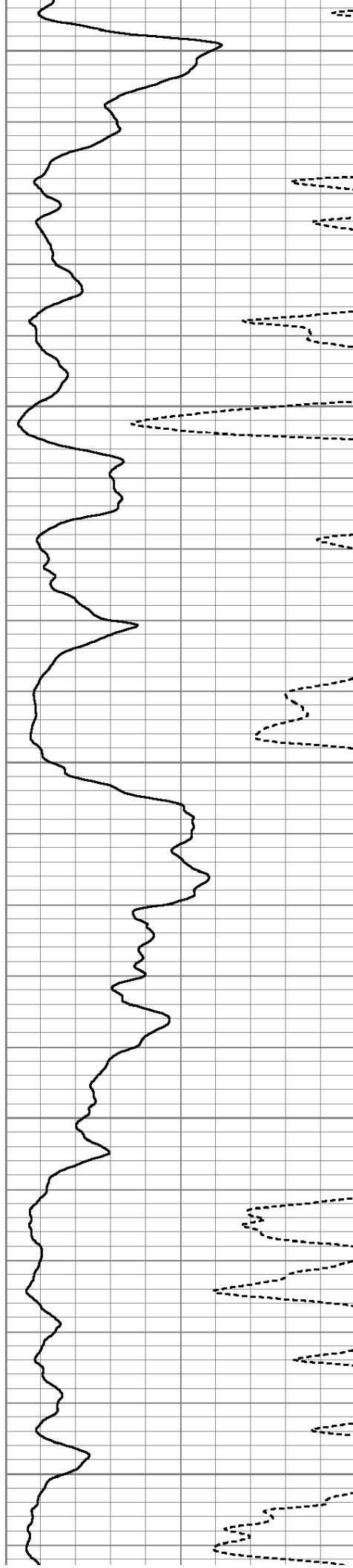
2200

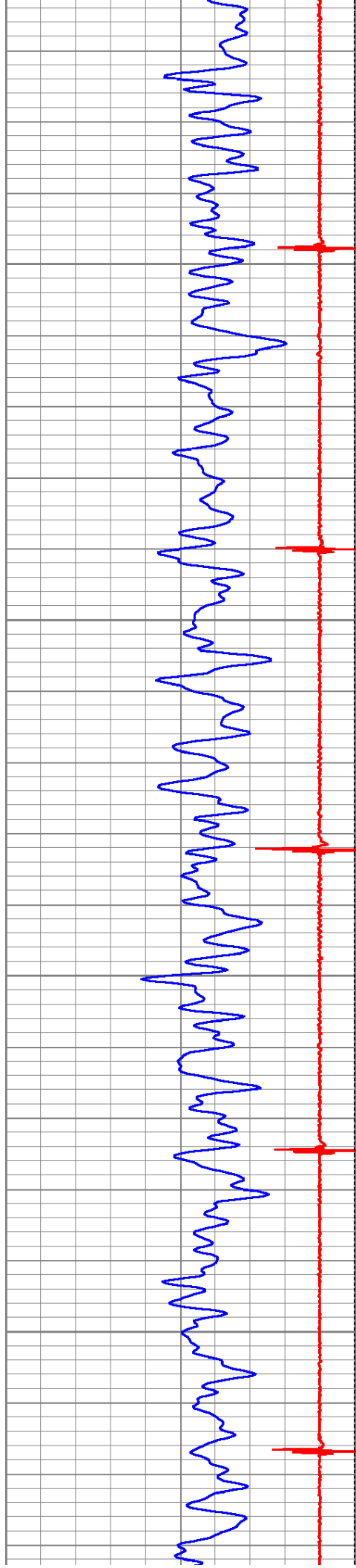
2250

2300

2350

2400



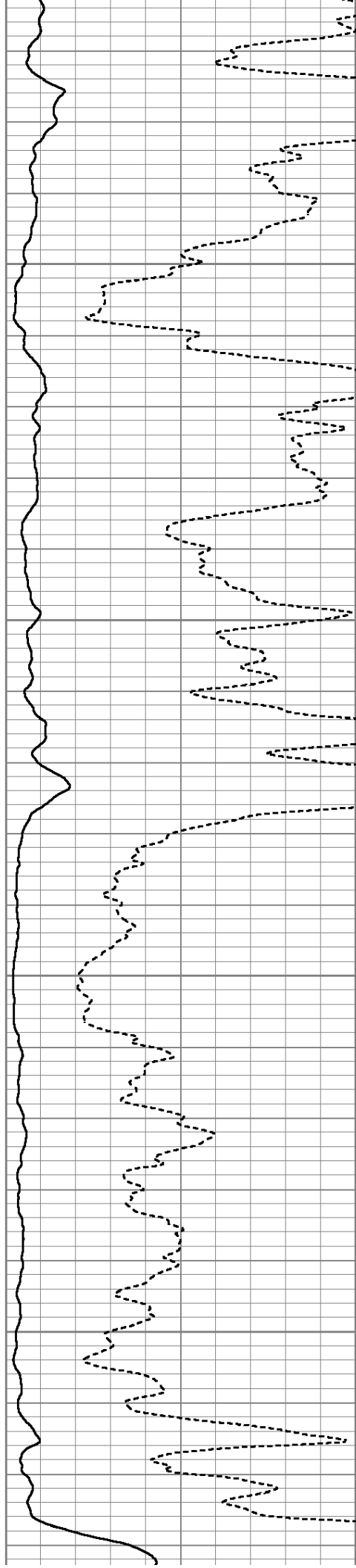


2450

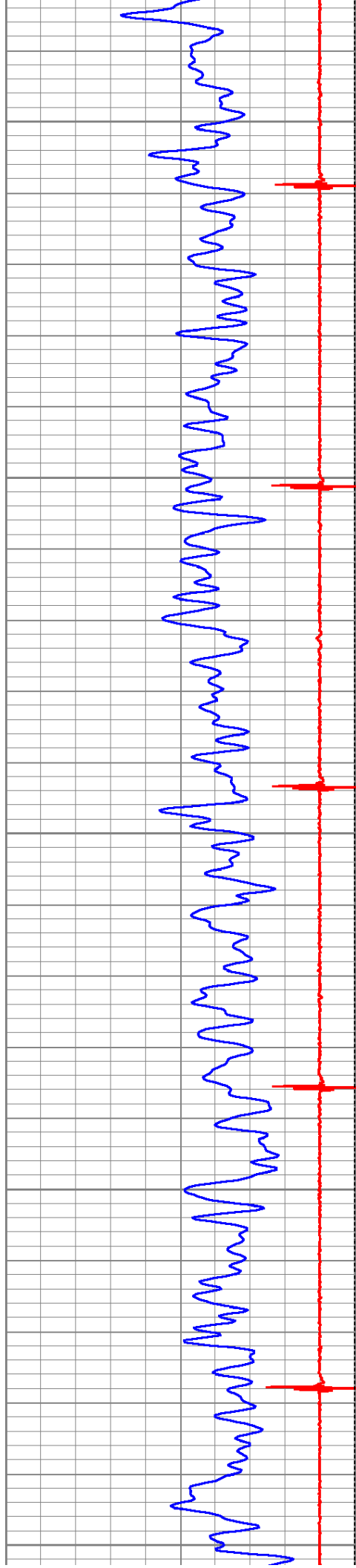
2500

2550

2600







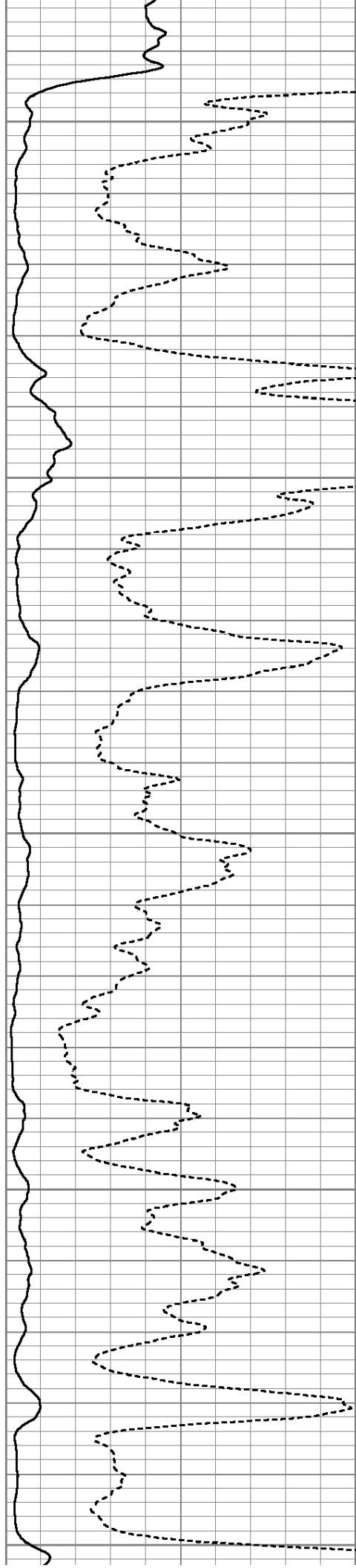
2650

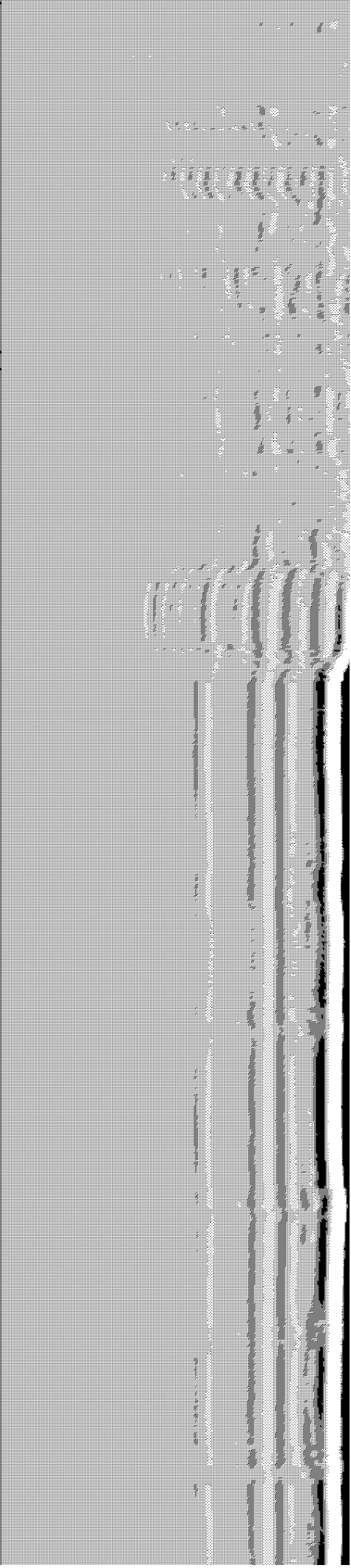
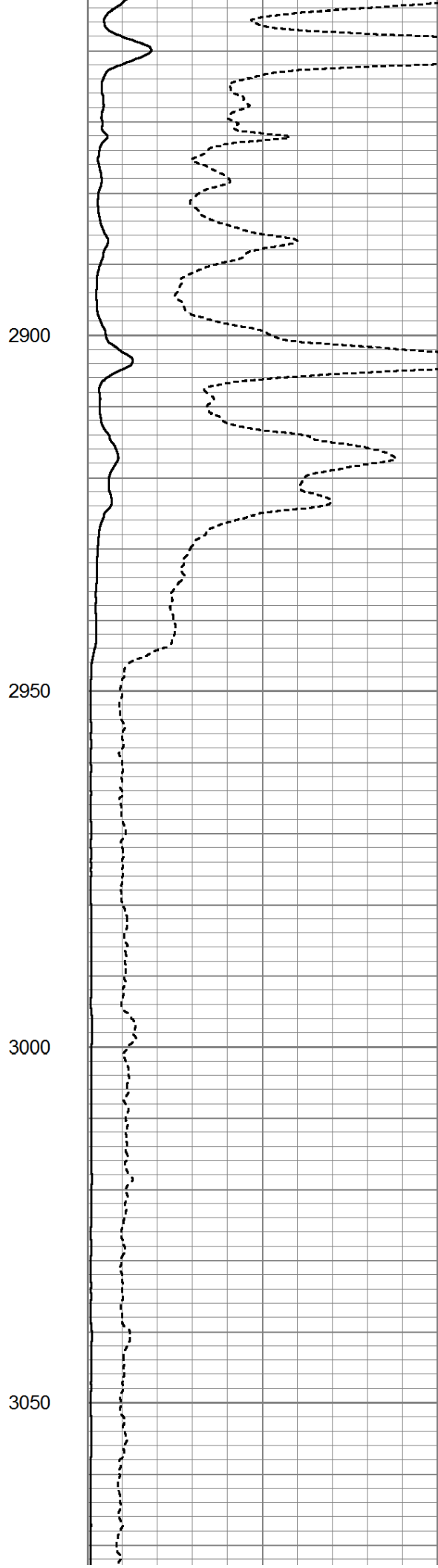
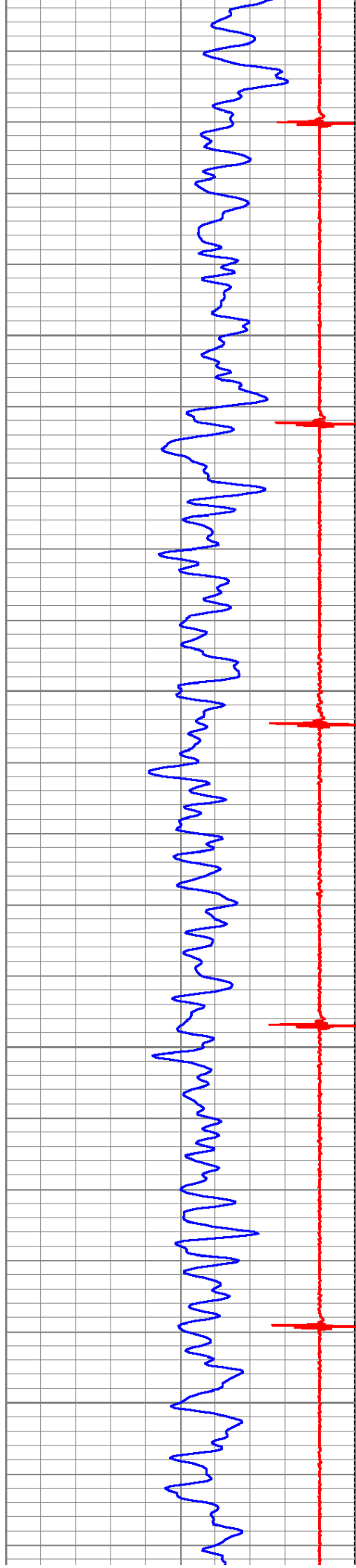
2700

2750

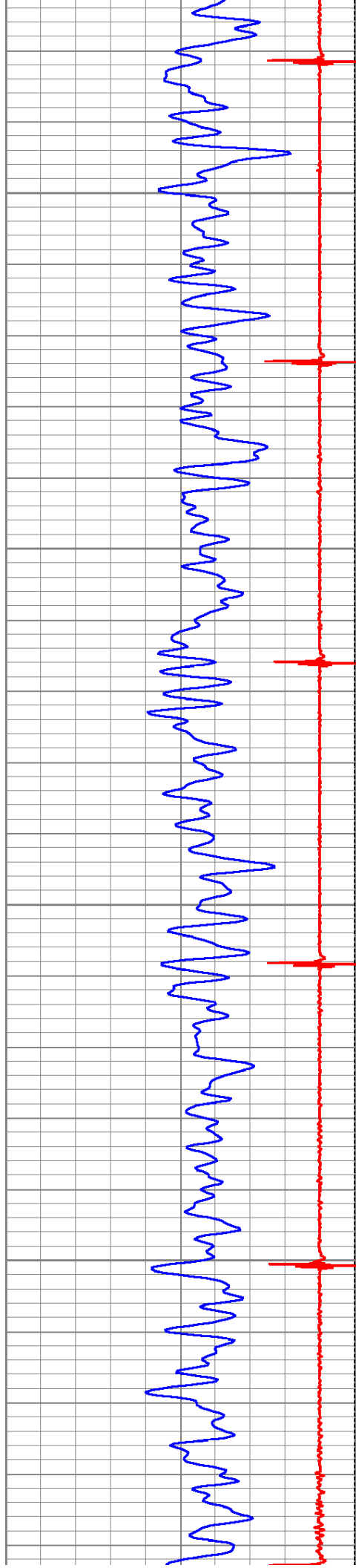
2800

2850







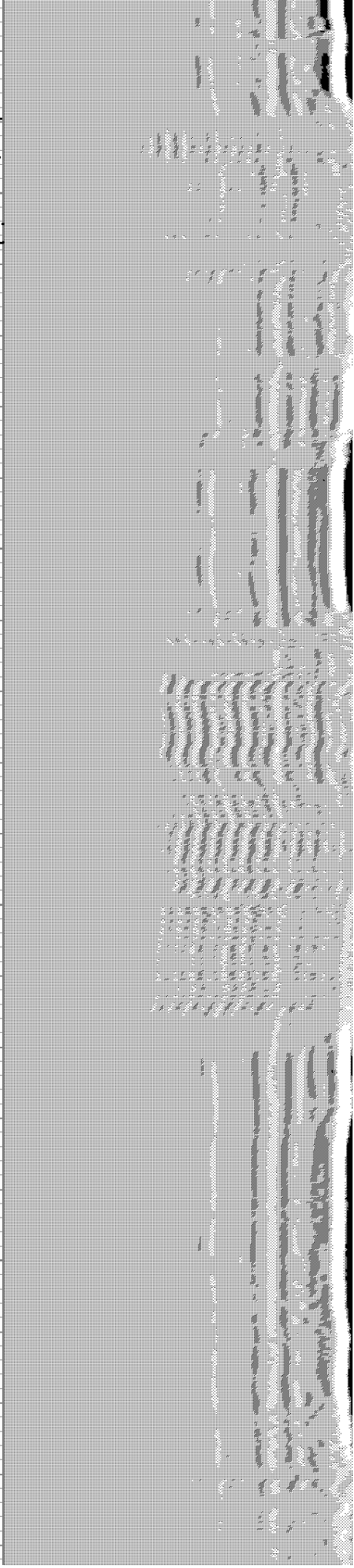
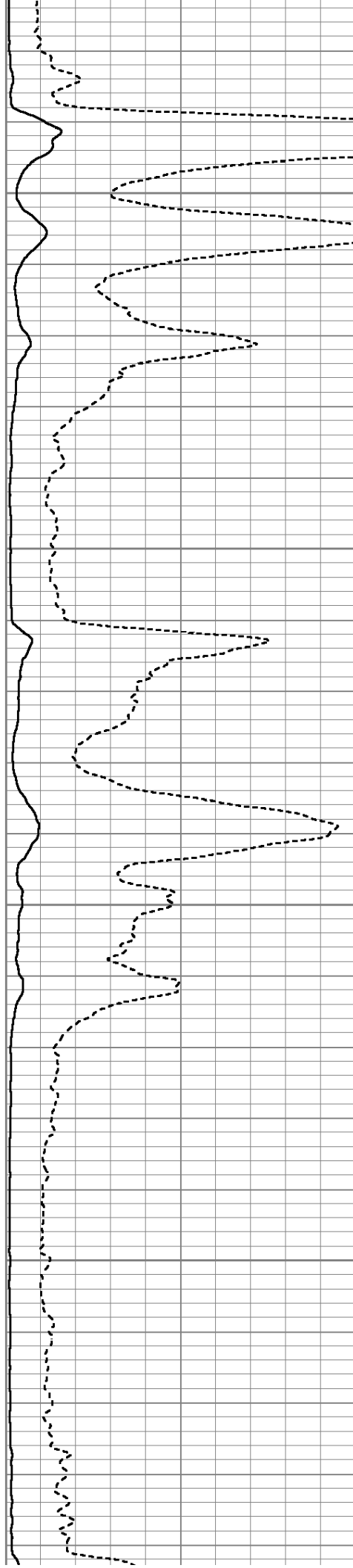


3100

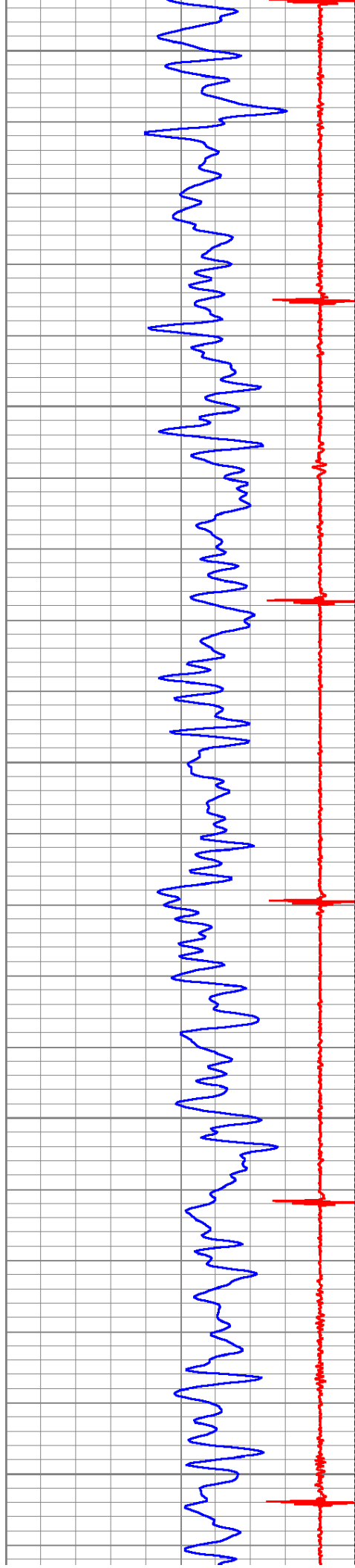
3150

3200

3250







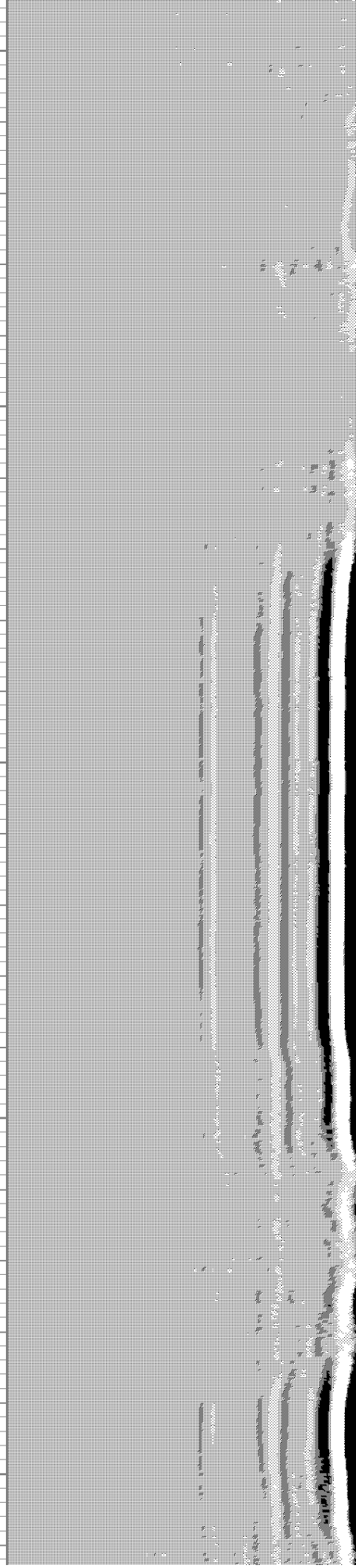
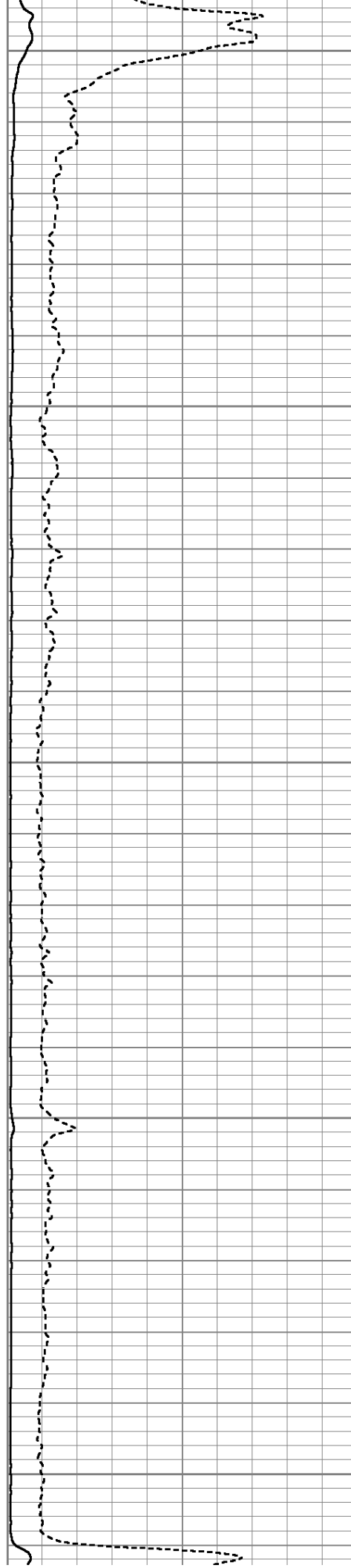
3300

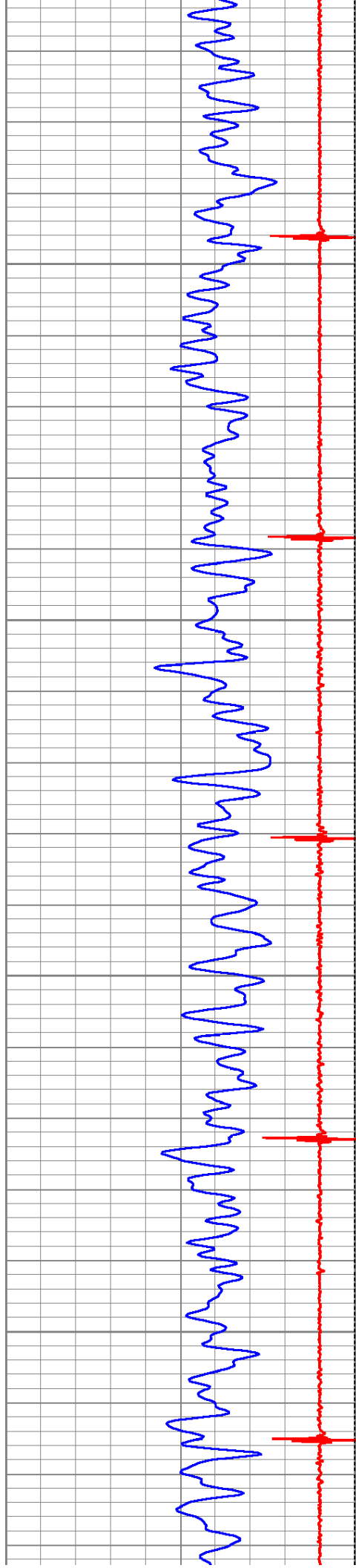
3350

3400

3450

3500



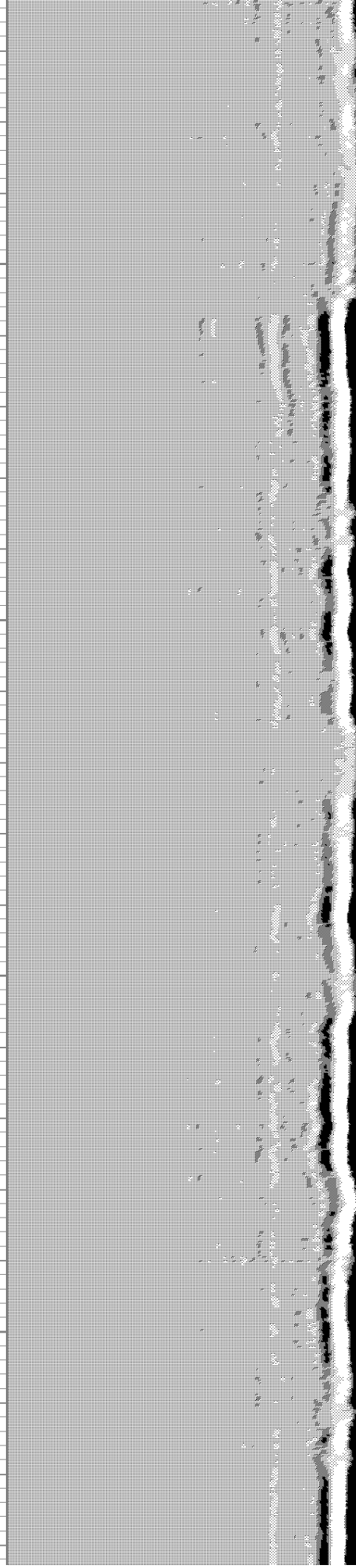
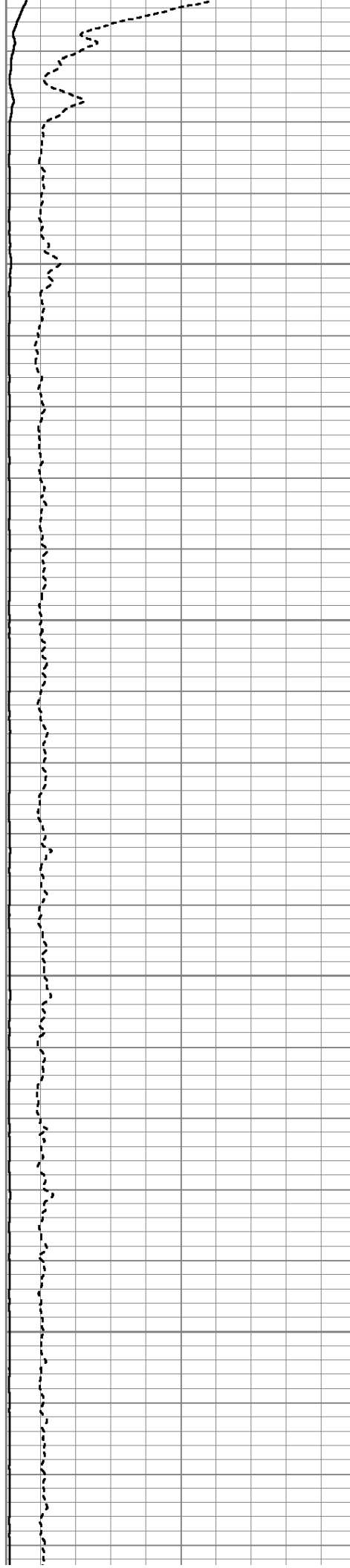


3550

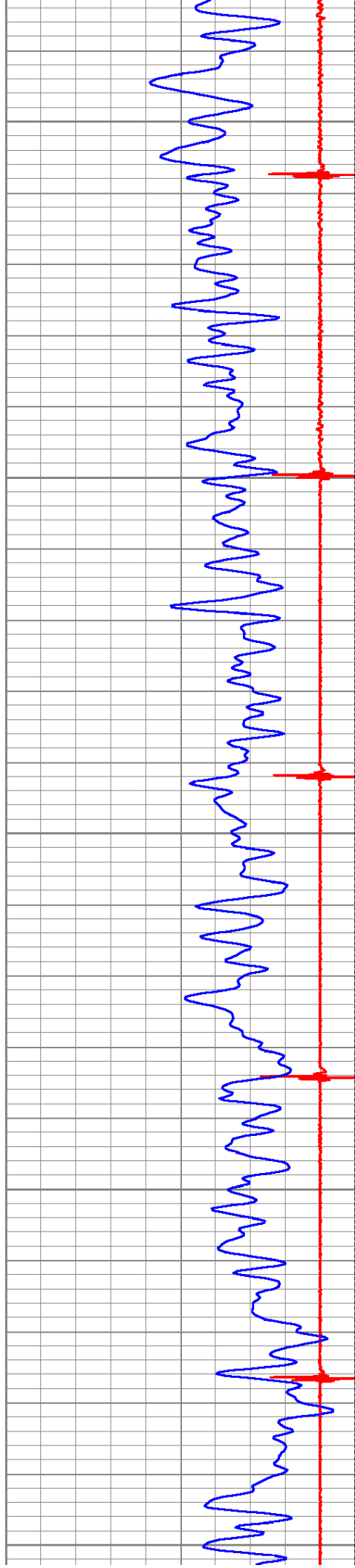
3600

3650

3700







3750

3800

3850

3900

3950



Amplitude

