

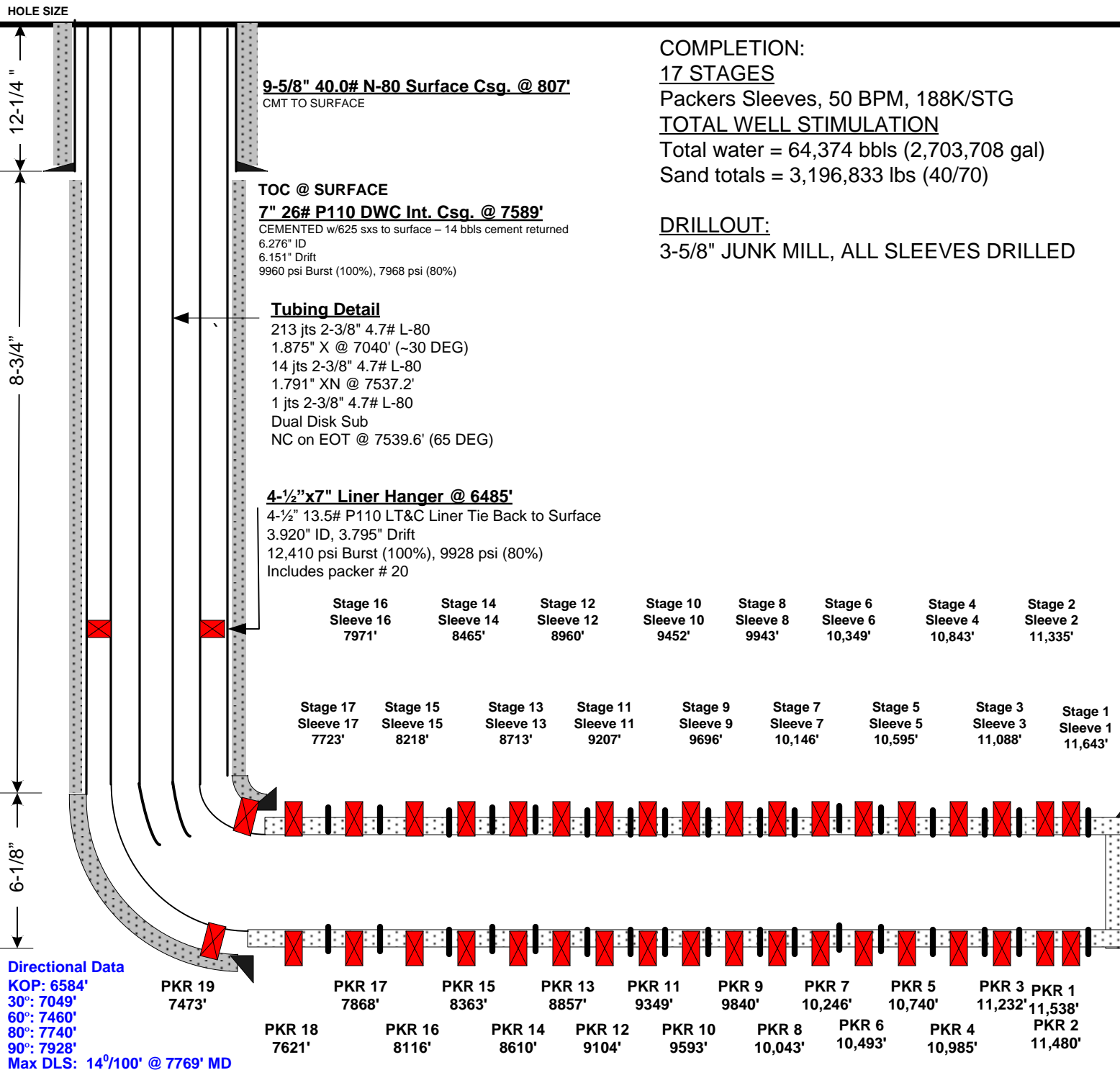
Current Wellbore Schematic

EnCana Oil & Gas (USA) Inc.



WELL : Sheley 3B-4H – Hydraulic Packers w/ Sleeves
 LOCATION : Lat: 40.16201 Long: -104.90144
 COUNTY : WELD STATE: CO
 FIELD : Wattenberg - NIOBRARA
 ELEVATION : 4912' (GL) 4925' (KB) Δ 13'

SPUD DATE: 10/18/12
 COMPL. DATE: January, 2013
 API #: 0512334751000



Lateral Length: 4169' (Int Csg Pt-TD)

4-1/2" 13.5# P-110 DQX @ 11,757'

NOT CEMENTED

4-1/2" P-110 13.5# Specs: 3.920" ID, 3.795" Drift, 12,410 psi Burst (100%), 9928 psi (80%)

TD: 11,767'
 PBTD (FC): 11,757'
 TVD: 7213'
 BHT 240 F