

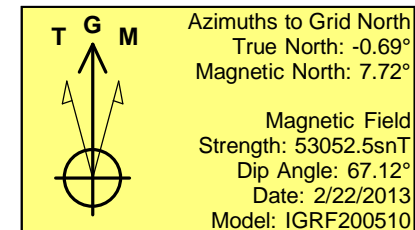
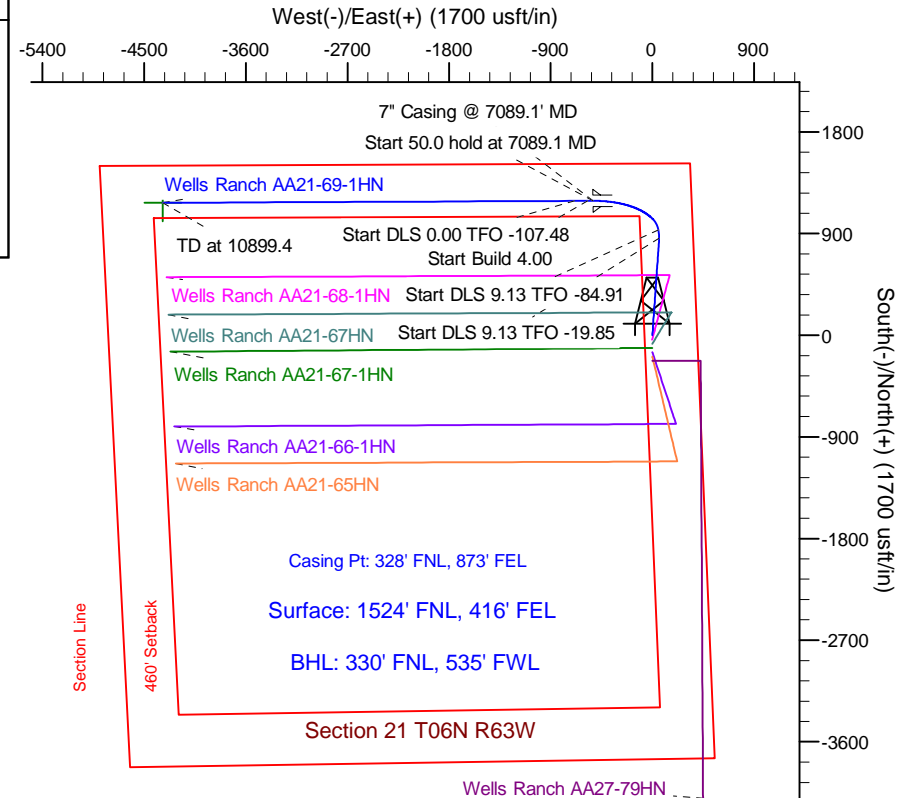
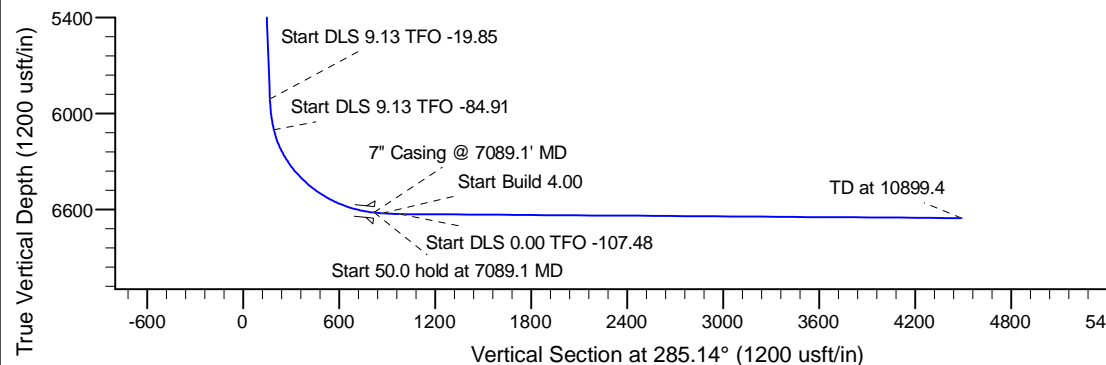
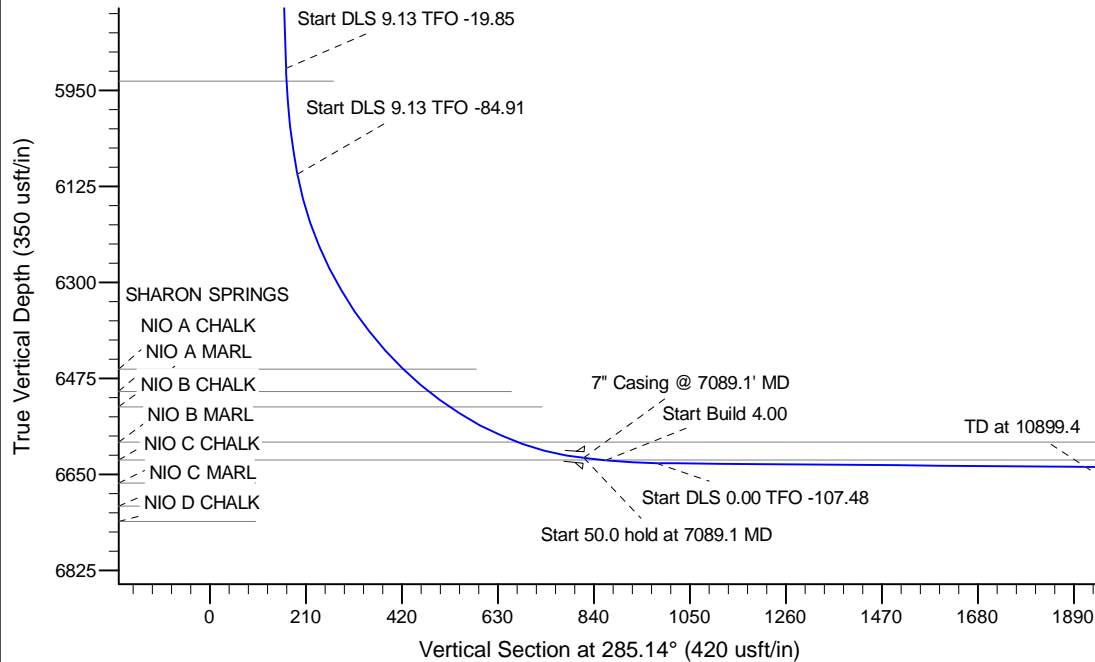
Project: Wattenberg Field
 Site: AA (Sec.21-T06N-R63W) Weld County, CO
 Well: Wells Ranch AA21-69-1HN
 Wellbore: Original Drilling
 Design: APD - Rev 0

Northern Region Drilling

Geodetic System: US State Plane 1983
 Datum: North American Datum 1983
 Ellipsoid: GRS 1980
 Zone: Colorado Northern Zone
 System Datum: Mean Sea Level

SECTION DETAILS

Sec	MD	Inc	Azi	TVD	+N/-S	+E/-W	Dleg	TFace	VSect	Target
1	0.0	0.00	0.00	0.0	0.0	0.0	0.00	0.00	0.0	
2	1200.0	0.00	0.00	1200.0	0.0	0.0	0.00	0.00	0.0	
3	1750.0	11.00	4.00	1746.6	52.5	3.7	2.00	4.00	10.2	
4	5991.3	11.00	4.00	5910.0	859.8	60.1	0.00	0.00	166.5	
5	6198.0	29.46	351.09	6103.2	930.3	53.6	9.13	-19.85	191.2	
6	7089.1	85.00	269.74	6620.0	1190.0	-525.0	9.13	-84.91	817.5	
7	7139.1	85.00	269.74	6624.4	1189.8	-574.8	0.00	0.00	865.5	
8	7254.1	89.60	269.74	6629.8	1189.3	-689.6	4.00	0.00	976.2	
9	10899.4	89.60	269.73	6655.3	1172.5	-4334.8	0.00	-107.48	4490.6	Wells Ranch AA21-69-1HN BHL 330'FNL, 535'FWL



WELL DETAILS: Wells Ranch AA21-69-1HN

Ground Level: 4721.0			
Northing	Easting	Latitude	Longitude
0.0	0.0	1417723.67	3296552.96
		40.475160	-104.434010

Plan: APD - Rev 0 (Wells Ranch AA21-69-1HN/Original Drilling)

Created By: Shailey Jewell Date: 13:31, March 13 2013

OK to submit with 2A as per Noble Drilling
3/14/13 10:54