

KERR-MCGEE OIL & GAS ONSHORE LP

Location: COLORADO Slot: SLOT#05 RUSSIAN FIDDLER 36N-18HZ (318°FSL & 1333°FSL, SEC.19)

Field: WELD COUNTY (KERR MCGEE) Well: RUSSIAN FIDDLER 36N-18HZ

Facility: SEC.19-T2N-R65W Wellbore: RUSSIAN FIDDLER 36N-18HZX PWB

Plot reference wellpath is RUSSIAN FIDDLER 36N-18HZX (REV-A.1) PWP

| | |
|--|--|
| True vertical depths are referenced to ENSIGN 145 (RKB) | Grid System: NAD83 / Lambert Colorado SP, Northern Zone (501), US feet |
| Measured depths are referenced to ENSIGN 145 (RKB) | North Reference: True north |
| ENSGN 145 (RKB) to Mean Sea Level: 5013 feet | Scale: True distance |
| Mean Sea Level to Mud line (At Slot: SLOTHOS RUSSIAN FIDDLER 36N-18HZ (318°FSL & 1333°FSL, SEC.19): 0 feet | Depths are in feet |
| Coordinates are in feet referenced to Slot | Created by: pcreain on 5/30/2013 |

Location Information

| Facility Name | | | | Grid East (US ft) | Grid North (US ft) | Latitude | Longitude |
|---|--------------|--------------|-------------------|--------------------|--------------------|-----------------|-----------------|
| SEC.19-T2N-R65W | | | | 3221754.510 | 1291647.910 | 40°07'52.481"N | 104°42'24.901"W |
| Slot | Local N (ft) | Local E (ft) | Grid East (US ft) | Grid North (US ft) | Latitude | Longitude | |
| SLOTHOS RUSSIAN FIDDLER 36N-18HZ (318°FSL & 1333°FSL, SEC.19) | -5007.56 | -1164.87 | 3220634.516 | 1286630.351 | 40°07'02.996"N | 104°42'39.896"W | |
| ENSGN 145 (RKB) to Mud line (At Slot: SLOTHOS RUSSIAN FIDDLER 36N-18HZ (318°FSL & 1333°FSL, SEC.19) | | | | | | 5013ft | |
| Mean Sea Level to Mud line (At Slot: SLOTHOS RUSSIAN FIDDLER 36N-18HZ (318°FSL & 1333°FSL, SEC.19) | | | | | | 0ft | |
| ENSGN 145 (RKB) to Mean Sea Level | | | | | | 5013ft | |

Survey Program

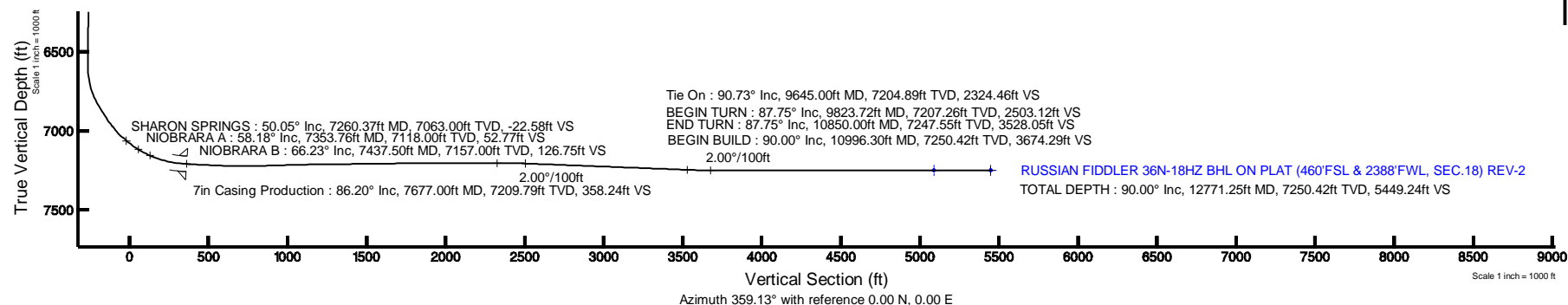
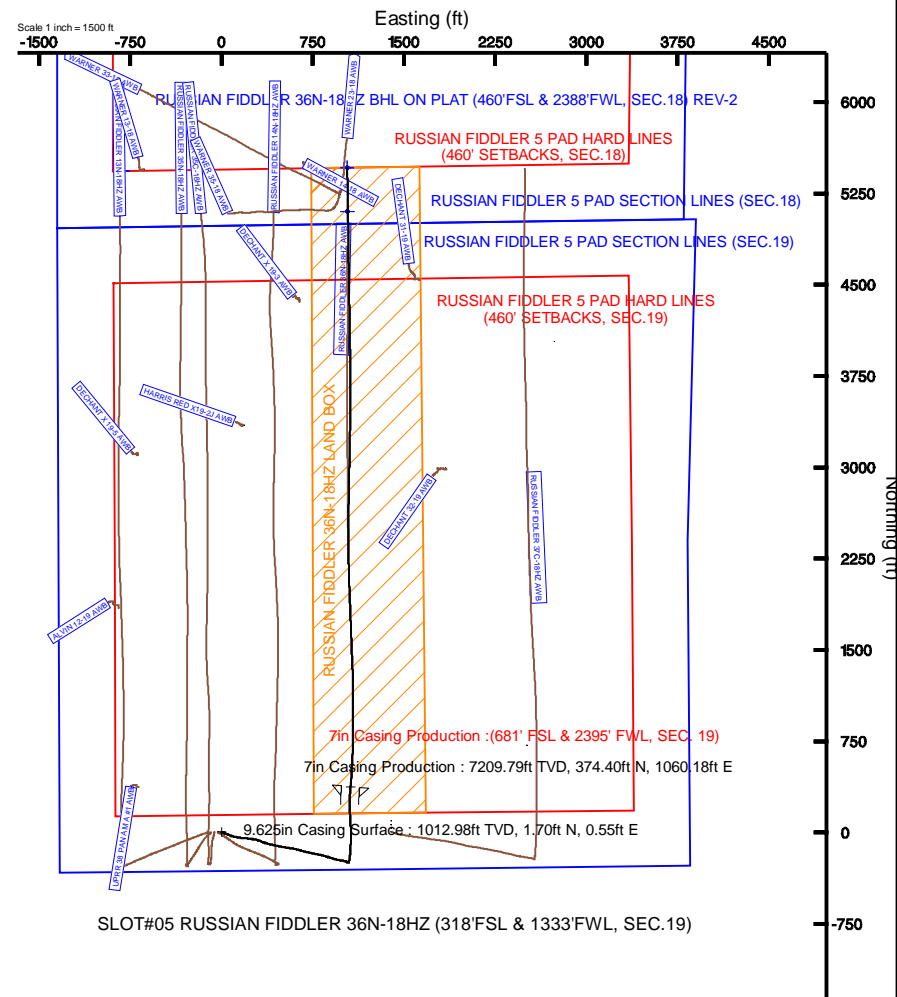
| Start MD (ft) | End MD (ft) | Tool | Model | Log Name/Comment | Wellbore |
|---------------|-------------|---------------------------|--------------------------------------|------------------|-------------------------------|
| 13.00 | 913.00 | Generic gyro - continuous | Generic gyro - continuous (Standard) | | RUSSIAN FIDDLER 36N-18HZ AWB |
| 913.00 | 7624.00 | NavTrak | NavTrak (MAGCORR,IFR) | | RUSSIAN FIDDLER 36N-18HZ AWB |
| 7624.00 | 9645.00 | OnTrak | OnTrak (MAGCORR,IFR) | | RUSSIAN FIDDLER 36N-18HZ AWB |
| 9645.00 | 12771.25 | OnTrak | OnTrak (MAGCORR,IFR) | | RUSSIAN FIDDLER 36N-18HZX PWB |

Well Profile Data

| Design Comment | MD (ft) | Inc (°) | Az (°) | TVD (ft) | Local N (ft) | Local E (ft) | DLS (°/100ft) | VS (ft) |
|----------------|----------|---------|---------|----------|--------------|--------------|---------------|---------|
| Tie On | 9645.00 | 90.731 | 359.027 | 7204.89 | 2340.57 | 1042.06 | 0.00 | 2324.46 |
| BEGIN TURN | 9823.72 | 87.750 | 1.000 | 7207.26 | 2519.25 | 1042.10 | 2.00 | 2503.12 |
| END TURN | 10850.00 | 87.750 | 1.000 | 7247.55 | 3544.58 | 1060.00 | 0.00 | 3528.05 |
| BEGIN BUILD | 10996.30 | 90.000 | 359.129 | 7250.42 | 3690.83 | 1060.16 | 2.00 | 3674.29 |
| TOTAL DEPTH | 12771.25 | 90.000 | 359.129 | 7250.42 | 5465.57 | 1033.18 | 0.00 | 5449.24 |

Targets

| Name | MD (ft) | TVD (ft) | Local N (ft) | Local E (ft) | Grid East (US ft) | Grid North (US ft) | Latitude | Longitude |
|---|----------|----------|--------------|--------------|-------------------|--------------------|----------------|-----------------|
| RUSSIAN FIDDLER 36N-18HZ LAND BOX | | 0.00 | 5438.63 | -819.83 | 3219766.37 | 1292061.24 | 40°07'56.741"N | 104°42'50.450"W |
| RUSSIAN FIDDLER 5 PAD HARD LINES (460' SETBACKS, SEC.18) | | 0.00 | 5438.63 | -819.83 | 3219766.37 | 1292061.24 | 40°07'56.741"N | 104°42'50.450"W |
| RUSSIAN FIDDLER 5 PAD HARD LINES (460' SETBACKS, SEC.19) | | 0.00 | 5438.63 | -819.83 | 3219766.37 | 1292061.24 | 40°07'56.741"N | 104°42'50.450"W |
| RUSSIAN FIDDLER 5 PAD SECTION LINES (SEC.18) | | 0.00 | 5438.61 | -819.83 | 3219766.37 | 1292061.22 | 40°07'56.741"N | 104°42'50.450"W |
| RUSSIAN FIDDLER 5 PAD SECTION LINES (SEC.19) | | 0.00 | 5438.63 | -819.83 | 3219766.37 | 1292061.24 | 40°07'56.741"N | 104°42'50.450"W |
| RUSSIAN FIDDLER 36N-18HZ BHL ON PLAT REV-1 (460°FSL & 2388°FSL, SEC.18) | | 7173.00 | 5465.55 | 1033.20 | 3221619.01 | 1292104.65 | 40°07'57.007"N | 104°42'26.593"W |
| RUSSIAN FIDDLER 36N-18HZ REV-2 (100°FSL & 2390°FSL, SEC.18) | | 7173.00 | 5105.63 | 1034.85 | 3221623.86 | 1291744.77 | 40°07'53.490"N | 104°42'26.572"W |
| RUSSIAN FIDDLER 36N-18HZ BHL ON PLAT (460°FSL & 2388°FSL, SEC.18) REV-2 | 12771.25 | 7250.42 | 5465.57 | 1033.18 | 3221616.99 | 1292104.67 | 40°07'57.007"N | 104°42'26.593"W |
| RUSSIAN FIDDLER 36N-18HZ REV-3 (100°FSL & 2390°FSL, SEC.18) | | 7250.02 | 5105.63 | 1034.85 | 3221623.86 | 1291744.77 | 40°07'53.490"N | 104°42'26.572"W |





Planned Wellpath Report

RUSSIAN FIDDLER 36N-18HZX (REV-A.1) PWP

Page 1 of 7



REFERENCE WELLPATH IDENTIFICATION

| | | | |
|----------|---------------------------------|----------------|---|
| Operator | KERR-MCGEE OIL & GAS ONSHORE LP | Slot | SLOT#05 RUSSIAN FIDDLER 36N-18HZ (318'FSL & 1333'FWL, SEC.19) |
| Area | COLORADO | Well | RUSSIAN FIDDLER 36N-18HZX |
| Field | WELD COUNTY (KERR MCGEE) | Wellbore | RUSSIAN FIDDLER 36N-18HZX PWB |
| Facility | SEC.19-T2N-R65W | Sidetrack from | RUSSIAN FIDDLER 36N-18HZ AWB at 9645.00 MD |

REPORT SETUP INFORMATION

| | | | |
|---------------------|---|----------------------|---|
| Projection System | NAD83 / Lambert Colorado SP, Northern Zone (501), US feet | Software System | WellArchitect® 3.0.2 |
| North Reference | True | User | Precain |
| Scale | 0.99996 | Report Generated | 5/30/2013 at 2:59:52 PM |
| Convergence at slot | 0.51° East | Database/Source file | WellArchitectDB/RUSSIAN_FIDDLER_36N-18HZX_PWB.xml |

WELLPATH LOCATION

| | Local coordinates | | Grid coordinates | | Geographic coordinates | |
|-----------------------|-------------------|----------|------------------|-----------------|------------------------|-----------------|
| | North[ft] | East[ft] | Easting[US ft] | Northing[US ft] | Latitude | Longitude |
| Slot Location | -5007.56 | -1164.87 | 3220634.52 | 1286630.35 | 40°07'02.996"N | 104°42'39.895"W |
| Facility Reference Pt | | | 3221754.51 | 1291647.91 | 40°07'52.481"N | 104°42'24.901"W |
| Field Reference Pt | | | 3197771.84 | 1268891.29 | 40°04'09.600"N | 104°47'36.000"W |

WELLPATH DATUM

| | | | |
|--------------------------|-------------------|--|-------------------|
| Calculation method | Minimum curvature | ENSIGN 145 (RKB) to Facility Vertical Datum | 5013.00ft |
| Horizontal Reference Pt | Slot | ENSIGN 145 (RKB) to Mean Sea Level | 5013.00ft |
| Vertical Reference Pt | ENSIGN 145 (RKB) | ENSIGN 145 (RKB) to Mud Line at Slot (SLOT#05 RUSSIAN FIDDLER 36N-18HZ (318'FSL & 1333'FWL, SEC.19)) | 5013.00ft |
| MD Reference Pt | ENSIGN 145 (RKB) | Section Origin | N 0.00, E 0.00 ft |
| Field Vertical Reference | Mean Sea Level | Section Azimuth | 359.13° |



Planned Wellpath Report

RUSSIAN FIDDLER 36N-18HZX (REV-A.1) PWP

Page 2 of 7



| REFERENCE WELLPATH IDENTIFICATION | | | |
|-----------------------------------|---------------------------------|----------------|---|
| Operator | KERR-MCGEE OIL & GAS ONSHORE LP | Slot | SLOT#05 RUSSIAN FIDDLER 36N-18HZ (318'FSL & 1333'FWL, SEC.19) |
| Area | COLORADO | Well | RUSSIAN FIDDLER 36N-18HZX |
| Field | WELD COUNTY (KERR MCGEE) | Wellbore | RUSSIAN FIDDLER 36N-18HZX PWB |
| Facility | SEC.19-T2N-R65W | Sidetrack from | RUSSIAN FIDDLER 36N-18HZ AWP at 9645.00 MD |

| WELLPATH DATA (160 stations) † = interpolated/extrapolated station | | | | | | | | | | |
|--|-----------------|-------------|----------|----------------|------------|-----------|----------------|-----------------|---------------|----------|
| MD [ft] | Inclination [°] | Azimuth [°] | TVD [ft] | Vert Sect [ft] | North [ft] | East [ft] | Latitude | Longitude | DLS [°/100ft] | Comments |
| 0.00† | 0.000 | 219.110 | 0.00 | 0.00 | 0.00 | 0.00 | 40°07'02.996"N | 104°42'39.895"W | 0.00 | |
| 13.00 | 0.000 | 219.110 | 13.00 | 0.00 | 0.00 | 0.00 | 40°07'02.996"N | 104°42'39.895"W | 0.00 | |
| 113.00 | 0.510 | 219.110 | 113.00 | -0.34 | -0.35 | -0.28 | 40°07'02.993"N | 104°42'39.899"W | 0.51 | |
| 213.00 | 0.230 | 285.940 | 213.00 | -0.62 | -0.64 | -0.75 | 40°07'02.990"N | 104°42'39.905"W | 0.47 | |
| 313.00 | 0.080 | 44.670 | 313.00 | -0.52 | -0.53 | -0.90 | 40°07'02.991"N | 104°42'39.907"W | 0.28 | |
| 413.00 | 0.350 | 358.520 | 413.00 | -0.16 | -0.18 | -0.86 | 40°07'02.994"N | 104°42'39.906"W | 0.30 | |
| 513.00 | 0.560 | 12.810 | 512.99 | 0.62 | 0.61 | -0.76 | 40°07'03.002"N | 104°42'39.905"W | 0.24 | |
| 613.00 | 0.500 | 36.090 | 612.99 | 1.44 | 1.44 | -0.39 | 40°07'03.010"N | 104°42'39.900"W | 0.22 | |
| 713.00 | 0.400 | 44.620 | 712.99 | 2.03 | 2.04 | 0.11 | 40°07'03.016"N | 104°42'39.894"W | 0.12 | |
| 813.00 | 0.200 | 89.530 | 812.98 | 2.28 | 2.29 | 0.53 | 40°07'03.019"N | 104°42'39.888"W | 0.29 | |
| 913.00 | 0.260 | 196.900 | 912.98 | 2.06 | 2.07 | 0.64 | 40°07'03.016"N | 104°42'39.887"W | 0.37 | |
| 1062.00 | 0.140 | 181.370 | 1061.98 | 1.56 | 1.56 | 0.54 | 40°07'03.011"N | 104°42'39.888"W | 0.09 | |
| 1154.00 | 0.970 | 105.350 | 1153.98 | 1.23 | 1.25 | 1.28 | 40°07'03.008"N | 104°42'39.878"W | 1.03 | |
| 1246.00 | 2.440 | 105.870 | 1245.93 | 0.45 | 0.50 | 3.92 | 40°07'03.001"N | 104°42'39.845"W | 1.60 | |
| 1337.00 | 4.050 | 109.660 | 1336.79 | -1.24 | -1.11 | 8.81 | 40°07'02.985"N | 104°42'39.782"W | 1.78 | |
| 1428.00 | 5.620 | 116.290 | 1427.46 | -4.40 | -4.16 | 15.83 | 40°07'02.955"N | 104°42'39.691"W | 1.83 | |
| 1520.00 | 7.340 | 114.260 | 1518.87 | -8.95 | -8.57 | 25.23 | 40°07'02.911"N | 104°42'39.570"W | 1.89 | |
| 1611.00 | 9.180 | 111.700 | 1608.92 | -14.21 | -13.64 | 37.27 | 40°07'02.861"N | 104°42'39.415"W | 2.06 | |
| 1703.00 | 10.450 | 110.710 | 1699.57 | -20.10 | -19.31 | 51.90 | 40°07'02.805"N | 104°42'39.227"W | 1.39 | |
| 1795.00 | 12.270 | 111.790 | 1789.77 | -26.93 | -25.89 | 68.78 | 40°07'02.740"N | 104°42'39.010"W | 1.99 | |
| 1886.00 | 13.620 | 106.120 | 1878.46 | -33.79 | -32.45 | 88.05 | 40°07'02.675"N | 104°42'38.762"W | 2.04 | |
| 1981.00 | 14.530 | 104.330 | 1970.60 | -40.18 | -38.51 | 110.35 | 40°07'02.615"N | 104°42'38.475"W | 1.06 | |
| 2076.00 | 15.860 | 98.380 | 2062.29 | -45.39 | -43.35 | 134.74 | 40°07'02.568"N | 104°42'38.161"W | 2.16 | |
| 2171.00 | 15.120 | 95.790 | 2153.84 | -48.92 | -46.49 | 159.91 | 40°07'02.537"N | 104°42'37.837"W | 1.07 | |
| 2265.00 | 14.270 | 93.980 | 2244.76 | -51.32 | -48.53 | 183.66 | 40°07'02.516"N | 104°42'37.531"W | 1.03 | |
| 2360.00 | 13.560 | 96.970 | 2336.97 | -53.83 | -50.70 | 206.40 | 40°07'02.495"N | 104°42'37.238"W | 1.06 | |
| 2455.00 | 14.590 | 97.740 | 2429.12 | -57.14 | -53.66 | 229.31 | 40°07'02.466"N | 104°42'36.943"W | 1.10 | |
| 2550.00 | 14.070 | 95.980 | 2521.16 | -60.31 | -56.47 | 252.65 | 40°07'02.438"N | 104°42'36.643"W | 0.71 | |
| 2645.00 | 13.980 | 100.730 | 2613.34 | -63.99 | -59.81 | 275.41 | 40°07'02.405"N | 104°42'36.350"W | 1.22 | |
| 2740.00 | 13.830 | 111.150 | 2705.57 | -70.56 | -66.05 | 297.28 | 40°07'02.343"N | 104°42'36.069"W | 2.64 | |
| 2835.00 | 14.110 | 109.940 | 2797.76 | -78.93 | -74.09 | 318.75 | 40°07'02.264"N | 104°42'35.792"W | 0.43 | |
| 2930.00 | 12.520 | 110.390 | 2890.20 | -86.78 | -81.63 | 339.29 | 40°07'02.189"N | 104°42'35.528"W | 1.68 | |
| 3024.00 | 13.730 | 106.960 | 2981.74 | -93.89 | -88.44 | 359.51 | 40°07'02.122"N | 104°42'35.267"W | 1.53 | |
| 3119.00 | 14.700 | 106.010 | 3073.83 | -100.84 | -95.05 | 381.88 | 40°07'02.057"N | 104°42'34.980"W | 1.05 | |
| 3214.00 | 15.180 | 103.480 | 3165.62 | -107.43 | -101.27 | 405.57 | 40°07'01.995"N | 104°42'34.675"W | 0.85 | |
| 3309.00 | 13.790 | 102.600 | 3257.60 | -113.15 | -106.64 | 428.71 | 40°07'01.942"N | 104°42'34.377"W | 1.48 | |
| 3404.00 | 13.610 | 102.660 | 3349.90 | -118.40 | -111.56 | 450.67 | 40°07'01.893"N | 104°42'34.094"W | 0.19 | |
| 3499.00 | 13.480 | 100.500 | 3442.26 | -123.20 | -116.03 | 472.46 | 40°07'01.849"N | 104°42'33.814"W | 0.55 | |
| 3594.00 | 13.620 | 101.170 | 3534.61 | -127.72 | -120.21 | 494.32 | 40°07'01.808"N | 104°42'33.532"W | 0.22 | |
| 3688.00 | 13.360 | 96.520 | 3626.02 | -131.42 | -123.59 | 515.97 | 40°07'01.775"N | 104°42'33.254"W | 1.19 | |
| 3783.00 | 13.790 | 99.730 | 3718.37 | -134.92 | -126.75 | 538.03 | 40°07'01.743"N | 104°42'32.970"W | 0.91 | |
| 3878.00 | 13.510 | 99.320 | 3810.69 | -138.96 | -130.46 | 560.14 | 40°07'01.707"N | 104°42'32.685"W | 0.31 | |
| 3973.00 | 14.220 | 100.540 | 3902.92 | -143.23 | -134.39 | 582.57 | 40°07'01.668"N | 104°42'32.396"W | 0.81 | |
| 4068.00 | 14.640 | 102.200 | 3994.92 | -148.26 | -139.07 | 605.77 | 40°07'01.622"N | 104°42'32.098"W | 0.62 | |
| 4160.92† | 13.789 | 105.336 | 4085.00 | -154.00 | -144.48 | 627.93 | 40°07'01.568"N | 104°42'31.813"W | 1.24 | PARKMAN |



Planned Wellpath Report

RUSSIAN FIDDLER 36N-18HZX (REV-A.1) PWP

Page 3 of 7



REFERENCE WELLPATH IDENTIFICATION

| | | | |
|----------|---------------------------------|----------------|---|
| Operator | KERR-MCGEE OIL & GAS ONSHORE LP | Slot | SLOT#05 RUSSIAN FIDDLER 36N-18HZ (318'FSL & 1333'FWL, SEC.19) |
| Area | COLORADO | Well | RUSSIAN FIDDLER 36N-18HZX |
| Field | WELD COUNTY (KERR MCGEE) | Wellbore | RUSSIAN FIDDLER 36N-18HZX PWB |
| Facility | SEC.19-T2N-R65W | Sidetrack from | RUSSIAN FIDDLER 36N-18HZ AWB at 9645.00 MD |

WELLPATH DATA (160 stations) † = interpolated/extrapolated station

| MD [ft] | Inclination [°] | Azimuth [°] | TVD [ft] | Vert Sect [ft] | North [ft] | East [ft] | Latitude | Longitude | DLS [°/100ft] | Comments |
|----------|-----------------|-------------|----------|----------------|------------|-----------|----------------|-----------------|---------------|----------------|
| 4163.00 | 13.770 | 105.410 | 4087.02 | -154.14 | -144.61 | 628.41 | 40°07'01.567"N | 104°42'31.806"W | 1.24 | |
| 4258.00 | 14.030 | 105.210 | 4179.23 | -160.50 | -150.63 | 650.42 | 40°07'01.507"N | 104°42'31.523"W | 0.28 | |
| 4352.00 | 15.550 | 104.950 | 4270.12 | -167.09 | -156.87 | 673.59 | 40°07'01.446"N | 104°42'31.225"W | 1.62 | |
| 4447.00 | 14.630 | 102.760 | 4361.84 | -173.39 | -162.81 | 697.59 | 40°07'01.387"N | 104°42'30.916"W | 1.14 | |
| 4542.00 | 14.360 | 103.490 | 4453.82 | -179.14 | -168.21 | 720.75 | 40°07'01.334"N | 104°42'30.618"W | 0.34 | |
| 4637.00 | 14.890 | 102.130 | 4545.74 | -184.81 | -173.52 | 744.14 | 40°07'01.281"N | 104°42'30.317"W | 0.66 | |
| 4706.67† | 15.329 | 100.930 | 4613.00 | -188.71 | -177.15 | 761.93 | 40°07'01.245"N | 104°42'30.088"W | 0.77 | SUSSEX |
| 4732.00 | 15.490 | 100.510 | 4637.42 | -190.06 | -178.40 | 768.54 | 40°07'01.233"N | 104°42'30.003"W | 0.77 | |
| 4826.00 | 16.120 | 99.950 | 4727.87 | -194.99 | -182.94 | 793.74 | 40°07'01.188"N | 104°42'29.678"W | 0.69 | |
| 4921.00 | 15.010 | 105.440 | 4819.39 | -200.92 | -188.50 | 818.59 | 40°07'01.133"N | 104°42'29.358"W | 1.94 | |
| 5016.00 | 14.210 | 103.870 | 4911.31 | -207.34 | -194.57 | 841.77 | 40°07'01.073"N | 104°42'29.060"W | 0.94 | |
| 5111.00 | 12.690 | 107.310 | 5003.71 | -213.56 | -200.47 | 863.05 | 40°07'01.015"N | 104°42'28.786"W | 1.81 | |
| 5206.00 | 12.810 | 107.690 | 5096.36 | -220.17 | -206.77 | 883.05 | 40°07'00.952"N | 104°42'28.529"W | 0.15 | |
| 5300.00 | 13.060 | 106.950 | 5187.98 | -226.74 | -213.03 | 903.14 | 40°07'00.891"N | 104°42'28.270"W | 0.32 | |
| 5395.00 | 11.960 | 105.920 | 5280.72 | -232.87 | -218.86 | 922.87 | 40°07'00.833"N | 104°42'28.016"W | 1.18 | |
| 5490.00 | 9.940 | 104.200 | 5373.99 | -237.84 | -223.58 | 940.29 | 40°07'00.786"N | 104°42'27.792"W | 2.15 | |
| 5585.00 | 8.190 | 102.350 | 5467.80 | -241.52 | -227.04 | 954.85 | 40°07'00.752"N | 104°42'27.605"W | 1.87 | |
| 5680.00 | 7.700 | 100.570 | 5561.89 | -244.33 | -229.65 | 967.71 | 40°07'00.726"N | 104°42'27.439"W | 0.58 | |
| 5775.00 | 6.530 | 95.650 | 5656.15 | -246.21 | -231.35 | 979.34 | 40°07'00.710"N | 104°42'27.289"W | 1.39 | |
| 5869.00 | 6.530 | 101.260 | 5749.54 | -247.94 | -232.92 | 989.91 | 40°07'00.694"N | 104°42'27.153"W | 0.68 | |
| 5964.00 | 6.470 | 102.360 | 5843.93 | -250.30 | -235.12 | 1000.43 | 40°07'00.672"N | 104°42'27.018"W | 0.15 | |
| 6059.00 | 5.570 | 100.610 | 5938.41 | -252.44 | -237.11 | 1010.19 | 40°07'00.653"N | 104°42'26.892"W | 0.97 | |
| 6154.00 | 5.040 | 115.630 | 6033.01 | -255.22 | -239.77 | 1018.49 | 40°07'00.626"N | 104°42'26.785"W | 1.56 | |
| 6249.00 | 4.570 | 116.200 | 6127.67 | -258.81 | -243.24 | 1025.64 | 40°07'00.592"N | 104°42'26.693"W | 0.50 | |
| 6344.00 | 3.720 | 111.690 | 6222.42 | -261.71 | -246.05 | 1031.90 | 40°07'00.564"N | 104°42'26.613"W | 0.96 | |
| 6439.00 | 2.910 | 115.000 | 6317.26 | -263.95 | -248.21 | 1036.95 | 40°07'00.543"N | 104°42'26.548"W | 0.88 | |
| 6533.00 | 2.230 | 108.650 | 6411.17 | -265.60 | -249.81 | 1040.85 | 40°07'00.527"N | 104°42'26.498"W | 0.78 | |
| 6628.00 | 1.610 | 100.400 | 6506.12 | -266.48 | -250.64 | 1043.91 | 40°07'00.519"N | 104°42'26.458"W | 0.71 | |
| 6724.00 | 1.530 | 45.360 | 6602.08 | -265.85 | -249.98 | 1046.15 | 40°07'00.525"N | 104°42'26.429"W | 1.51 | |
| 6818.00 | 11.040 | 8.150 | 6695.43 | -256.07 | -240.17 | 1048.33 | 40°07'00.622"N | 104°42'26.401"W | 10.49 | |
| 6850.00 | 17.000 | 9.790 | 6726.46 | -248.44 | -232.52 | 1049.56 | 40°07'00.698"N | 104°42'26.386"W | 18.66 | |
| 6882.00 | 21.560 | 9.020 | 6756.66 | -238.05 | -222.09 | 1051.27 | 40°07'00.801"N | 104°42'26.363"W | 14.27 | |
| 6913.00 | 23.910 | 7.500 | 6785.25 | -226.22 | -210.24 | 1052.99 | 40°07'00.918"N | 104°42'26.341"W | 7.81 | |
| 6945.00 | 26.910 | 6.990 | 6814.15 | -212.63 | -196.62 | 1054.72 | 40°07'01.053"N | 104°42'26.319"W | 9.40 | |
| 6977.00 | 29.510 | 5.350 | 6842.35 | -197.62 | -181.58 | 1056.33 | 40°07'01.201"N | 104°42'26.298"W | 8.48 | |
| 7008.00 | 31.760 | 3.860 | 6869.02 | -181.89 | -165.84 | 1057.59 | 40°07'01.357"N | 104°42'26.282"W | 7.66 | |
| 7040.00 | 33.330 | 2.620 | 6895.99 | -164.72 | -148.65 | 1058.56 | 40°07'01.527"N | 104°42'26.270"W | 5.33 | |
| 7071.00 | 34.560 | 1.620 | 6921.71 | -147.44 | -131.35 | 1059.20 | 40°07'01.698"N | 104°42'26.261"W | 4.36 | |
| 7103.00 | 35.820 | 3.440 | 6947.86 | -129.03 | -112.93 | 1060.02 | 40°07'01.880"N | 104°42'26.251"W | 5.12 | |
| 7135.00 | 37.780 | 2.970 | 6973.48 | -109.91 | -93.79 | 1061.09 | 40°07'02.069"N | 104°42'26.237"W | 6.19 | |
| 7166.00 | 40.990 | 2.170 | 6997.44 | -90.28 | -74.15 | 1061.97 | 40°07'02.263"N | 104°42'26.226"W | 10.48 | |
| 7198.00 | 44.810 | 2.250 | 7020.88 | -68.53 | -52.38 | 1062.81 | 40°07'02.478"N | 104°42'26.215"W | 11.94 | |
| 7229.00 | 47.560 | 359.620 | 7042.34 | -46.18 | -30.02 | 1063.16 | 40°07'02.699"N | 104°42'26.210"W | 10.78 | |
| 7260.37† | 50.050 | 358.197 | 7063.00 | -22.58 | -6.42 | 1062.70 | 40°07'02.932"N | 104°42'26.216"W | 8.64 | SHARON SPRINGS |
| 7261.00 | 50.100 | 358.170 | 7063.40 | -22.10 | -5.94 | 1062.69 | 40°07'02.937"N | 104°42'26.216"W | 8.64 | |



Planned Wellpath Report

RUSSIAN FIDDLER 36N-18HZX (REV-A.1) PWP

Page 4 of 7



| REFERENCE WELLPATH IDENTIFICATION | | | |
|-----------------------------------|---------------------------------|----------------|---|
| Operator | KERR-MCGEE OIL & GAS ONSHORE LP | Slot | SLOT#05 RUSSIAN FIDDLER 36N-18HZ (318'FSL & 1333'FWL, SEC.19) |
| Area | COLORADO | Well | RUSSIAN FIDDLER 36N-18HZX |
| Field | WELD COUNTY (KERR MCGEE) | Wellbore | RUSSIAN FIDDLER 36N-18HZX PWB |
| Facility | SEC.19-T2N-R65W | Sidetrack from | RUSSIAN FIDDLER 36N-18HZ AWB at 9645.00 MD |

| WELLPATH DATA (160 stations) † = interpolated/extrapolated station | | | | | | | | | | |
|--|--------------------|----------------|-------------|-------------------|---------------|--------------|----------------|-----------------|------------------|------------|
| MD [ft] | Inclination [°] | Azimuth [°] | TVD [ft] | Vert Sect [ft] | North [ft] | East [ft] | Latitude | Longitude | DLS [°/100ft] | Comments |
| 7293.00 | 52.640 | 358.230 | 7083.38 | 2.90 | 19.04 | 1061.90 | 40°07'03.184"N | 104°42'26.226"W | 7.94 | |
| 7324.00 | 55.140 | 357.540 | 7101.65 | 27.93 | 44.07 | 1060.98 | 40°07'03.431"N | 104°42'26.238"W | 8.26 | |
| 7353.76† | 58.180 | 356.309 | 7118.00 | 52.77 | 68.89 | 1059.64 | 40°07'03.677"N | 104°42'26.256"W | 10.79 | NIOBRARA A |
| 7356.00 | 58.410 | 356.220 | 7119.18 | 54.68 | 70.79 | 1059.52 | 40°07'03.695"N | 104°42'26.257"W | 10.79 | |
| 7387.00 | 61.300 | 357.340 | 7134.75 | 81.46 | 97.55 | 1058.01 | 40°07'03.960"N | 104°42'26.276"W | 9.83 | |
| 7419.00 | 64.590 | 357.340 | 7149.30 | 109.94 | 126.02 | 1056.69 | 40°07'04.241"N | 104°42'26.293"W | 10.28 | |
| 7437.50† | 66.225 | 356.663 | 7157.00 | 126.75 | 142.82 | 1055.81 | 40°07'04.407"N | 104°42'26.305"W | 9.44 | NIOBRARA B |
| 7451.00 | 67.420 | 356.180 | 7162.31 | 139.14 | 155.20 | 1055.04 | 40°07'04.529"N | 104°42'26.315"W | 9.44 | |
| 7482.00 | 70.240 | 356.430 | 7173.51 | 168.01 | 184.05 | 1053.17 | 40°07'04.815"N | 104°42'26.339"W | 9.13 | |
| 7514.00 | 72.280 | 359.320 | 7183.79 | 198.31 | 214.32 | 1052.05 | 40°07'05.114"N | 104°42'26.353"W | 10.67 | |
| 7545.00 | 75.480 | 0.670 | 7192.39 | 228.08 | 244.10 | 1052.05 | 40°07'05.408"N | 104°42'26.353"W | 11.14 | |
| 7577.00 | 78.620 | 3.260 | 7199.57 | 259.22 | 275.26 | 1053.13 | 40°07'05.716"N | 104°42'26.339"W | 12.59 | |
| 7624.00 | 85.620 | 4.120 | 7206.01 | 305.60 | 321.69 | 1056.13 | 40°07'06.175"N | 104°42'26.301"W | 15.00 | |
| 7703.00 | 86.480 | 4.940 | 7211.45 | 384.06 | 400.25 | 1062.35 | 40°07'06.951"N | 104°42'26.220"W | 1.50 | |
| 7797.00 | 87.040 | 3.580 | 7216.76 | 477.53 | 493.84 | 1069.32 | 40°07'07.876"N | 104°42'26.131"W | 1.56 | |
| 7892.00 | 87.740 | 2.800 | 7221.09 | 572.19 | 588.60 | 1074.60 | 40°07'08.812"N | 104°42'26.063"W | 1.10 | |
| 7985.00 | 89.130 | 1.820 | 7223.63 | 665.01 | 681.48 | 1078.35 | 40°07'09.730"N | 104°42'26.014"W | 1.83 | |
| 8082.00 | 90.760 | 0.750 | 7223.72 | 761.94 | 778.45 | 1080.52 | 40°07'10.689"N | 104°42'25.986"W | 2.01 | |
| 8177.00 | 92.090 | 0.040 | 7221.36 | 856.88 | 873.42 | 1081.18 | 40°07'11.627"N | 104°42'25.978"W | 1.59 | |
| 8272.00 | 91.600 | 359.780 | 7218.30 | 951.82 | 968.37 | 1081.03 | 40°07'12.565"N | 104°42'25.980"W | 0.58 | |
| 8367.00 | 91.500 | 0.370 | 7215.73 | 1046.78 | 1063.33 | 1081.15 | 40°07'13.504"N | 104°42'25.978"W | 0.63 | |
| 8461.00 | 90.860 | 359.140 | 7213.79 | 1140.75 | 1157.31 | 1080.75 | 40°07'14.432"N | 104°42'25.983"W | 1.47 | |
| 8556.00 | 90.090 | 359.060 | 7213.01 | 1235.74 | 1252.29 | 1079.26 | 40°07'15.371"N | 104°42'26.002"W | 0.81 | |
| 8651.00 | 91.070 | 357.390 | 7212.04 | 1330.72 | 1347.24 | 1076.32 | 40°07'16.309"N | 104°42'26.040"W | 2.04 | |
| 8746.00 | 91.070 | 357.700 | 7210.27 | 1425.67 | 1442.14 | 1072.25 | 40°07'17.247"N | 104°42'26.093"W | 0.33 | |
| 8841.00 | 90.670 | 357.680 | 7208.83 | 1520.63 | 1537.05 | 1068.42 | 40°07'18.185"N | 104°42'26.142"W | 0.42 | |
| 8936.00 | 90.580 | 358.200 | 7207.79 | 1615.60 | 1631.98 | 1065.01 | 40°07'19.123"N | 104°42'26.186"W | 0.56 | |
| 9031.00 | 90.610 | 357.650 | 7206.80 | 1710.58 | 1726.91 | 1061.57 | 40°07'20.061"N | 104°42'26.230"W | 0.58 | |
| 9125.00 | 90.860 | 357.640 | 7205.60 | 1804.54 | 1820.83 | 1057.70 | 40°07'20.989"N | 104°42'26.280"W | 0.27 | |
| 9220.00 | 89.630 | 357.920 | 7205.19 | 1899.51 | 1915.75 | 1054.02 | 40°07'21.927"N | 104°42'26.327"W | 1.33 | |
| 9315.00 | 89.690 | 357.730 | 7205.76 | 1994.48 | 2010.68 | 1050.42 | 40°07'22.866"N | 104°42'26.373"W | 0.21 | |
| 9410.00 | 90.430 | 358.920 | 7205.66 | 2089.47 | 2105.64 | 1047.64 | 40°07'23.804"N | 104°42'26.409"W | 1.48 | |
| 9505.00 | 89.960 | 358.290 | 7205.33 | 2184.46 | 2200.61 | 1045.33 | 40°07'24.742"N | 104°42'26.439"W | 0.83 | |
| 9599.00 | 90.150 | 358.790 | 7205.24 | 2278.46 | 2294.58 | 1042.93 | 40°07'25.671"N | 104°42'26.469"W | 0.57 | |
| 9645.00 | 90.731 | 359.027 | 7204.89 | 2324.46 | 2340.57 | 1042.06 | 40°07'26.126"N | 104°42'26.481"W | 0.00 | Tie On |
| 9745.00† | 89.063 | 0.131 | 7205.07 | 2424.45 | 2440.56 | 1041.32 | 40°07'27.114"N | 104°42'26.490"W | 2.00 | |
| 9823.72 | 87.750 | 1.000 | 7207.26 | 2503.12 | 2519.25 | 1042.10 | 40°07'27.891"N | 104°42'26.480"W | 2.00 | BEGIN TURN |
| 9845.00† | 87.750 | 1.000 | 7208.09 | 2524.36 | 2540.50 | 1042.47 | 40°07'28.101"N | 104°42'26.475"W | 0.00 | |
| 9945.00† | 87.750 | 1.000 | 7212.02 | 2624.23 | 2640.41 | 1044.21 | 40°07'29.089"N | 104°42'26.453"W | 0.00 | |
| 10045.00† | 87.750 | 1.000 | 7215.95 | 2724.10 | 2740.32 | 1045.96 | 40°07'30.076"N | 104°42'26.430"W | 0.00 | |
| 10145.00† | 87.750 | 1.000 | 7219.87 | 2823.97 | 2840.23 | 1047.70 | 40°07'31.063"N | 104°42'26.408"W | 0.00 | |
| 10245.00† | 87.750 | 1.000 | 7223.80 | 2923.84 | 2940.13 | 1049.45 | 40°07'32.051"N | 104°42'26.385"W | 0.00 | |
| 10345.00† | 87.750 | 1.000 | 7227.72 | 3023.71 | 3040.04 | 1051.19 | 40°07'33.038"N | 104°42'26.363"W | 0.00 | |
| 10445.00† | 87.750 | 1.000 | 7231.65 | 3123.58 | 3139.95 | 1052.93 | 40°07'34.025"N | 104°42'26.340"W | 0.00 | |
| 10545.00† | 87.750 | 1.000 | 7235.58 | 3223.45 | 3239.86 | 1054.68 | 40°07'35.012"N | 104°42'26.318"W | 0.00 | |



Planned Wellpath Report

RUSSIAN FIDDLER 36N-18HZX (REV-A.1) PWP

Page 5 of 7



REFERENCE WELLPATH IDENTIFICATION

| | | | |
|----------|---------------------------------|----------------|---|
| Operator | KERR-MCGEE OIL & GAS ONSHORE LP | Slot | SLOT#05 RUSSIAN FIDDLER 36N-18HZ (318'FSL & 1333'FWL, SEC.19) |
| Area | COLORADO | Well | RUSSIAN FIDDLER 36N-18HZX |
| Field | WELD COUNTY (KERR MCGEE) | Wellbore | RUSSIAN FIDDLER 36N-18HZX PWB |
| Facility | SEC.19-T2N-R65W | Sidetrack from | RUSSIAN FIDDLER 36N-18HZ AWB at 9645.00 MD |

WELLPATH DATA (160 stations) † = interpolated/extrapolated station

| MD [ft] | Inclination [°] | Azimuth [°] | TVD [ft] | Vert Sect [ft] | North [ft] | East [ft] | Latitude | Longitude | DLS [°/100ft] | Comments |
|-----------|-----------------|-------------|----------------------|----------------|------------|-----------|----------------|-----------------|---------------|-------------|
| 10645.00† | 87.750 | 1.000 | 7239.50 | 3323.32 | 3339.77 | 1056.42 | 40°07'36.000"N | 104°42'26.295"W | 0.00 | |
| 10745.00† | 87.750 | 1.000 | 7243.43 | 3423.19 | 3439.67 | 1058.17 | 40°07'36.987"N | 104°42'26.273"W | 0.00 | |
| 10845.00† | 87.750 | 1.000 | 7247.35 | 3523.06 | 3539.58 | 1059.91 | 40°07'37.974"N | 104°42'26.250"W | 0.00 | |
| 10850.00 | 87.750 | 1.000 | 7247.55 | 3528.05 | 3544.58 | 1060.00 | 40°07'38.024"N | 104°42'26.249"W | 0.00 | END TURN |
| 10945.00† | 89.211 | 359.785 | 7250.07 | 3622.99 | 3639.54 | 1060.65 | 40°07'38.962"N | 104°42'26.241"W | 2.00 | |
| 10996.30 | 90.000 | 359.129 | 7250.42 | 3674.29 | 3690.83 | 1060.16 | 40°07'39.469"N | 104°42'26.247"W | 2.00 | BEGIN BUILD |
| 11045.00† | 90.000 | 359.129 | 7250.42 | 3722.99 | 3739.53 | 1059.42 | 40°07'39.950"N | 104°42'26.256"W | 0.00 | |
| 11145.00† | 90.000 | 359.129 | 7250.42 | 3822.99 | 3839.51 | 1057.90 | 40°07'40.938"N | 104°42'26.276"W | 0.00 | |
| 11245.00† | 90.000 | 359.129 | 7250.42 | 3922.99 | 3939.50 | 1056.38 | 40°07'41.926"N | 104°42'26.295"W | 0.00 | |
| 11345.00† | 90.000 | 359.129 | 7250.42 | 4022.99 | 4039.49 | 1054.86 | 40°07'42.914"N | 104°42'26.315"W | 0.00 | |
| 11445.00† | 90.000 | 359.129 | 7250.42 | 4122.99 | 4139.48 | 1053.34 | 40°07'43.903"N | 104°42'26.334"W | 0.00 | |
| 11545.00† | 90.000 | 359.129 | 7250.42 | 4222.99 | 4239.47 | 1051.82 | 40°07'44.891"N | 104°42'26.354"W | 0.00 | |
| 11645.00† | 90.000 | 359.129 | 7250.42 | 4322.99 | 4339.46 | 1050.30 | 40°07'45.879"N | 104°42'26.373"W | 0.00 | |
| 11745.00† | 90.000 | 359.129 | 7250.42 | 4422.99 | 4439.45 | 1048.78 | 40°07'46.867"N | 104°42'26.393"W | 0.00 | |
| 11845.00† | 90.000 | 359.129 | 7250.42 | 4522.99 | 4539.43 | 1047.26 | 40°07'47.855"N | 104°42'26.412"W | 0.00 | |
| 11945.00† | 90.000 | 359.129 | 7250.42 | 4622.99 | 4639.42 | 1045.74 | 40°07'48.843"N | 104°42'26.432"W | 0.00 | |
| 12045.00† | 90.000 | 359.129 | 7250.42 | 4722.99 | 4739.41 | 1044.22 | 40°07'49.831"N | 104°42'26.452"W | 0.00 | |
| 12145.00† | 90.000 | 359.129 | 7250.42 | 4822.99 | 4839.40 | 1042.70 | 40°07'50.819"N | 104°42'26.471"W | 0.00 | |
| 12245.00† | 90.000 | 359.129 | 7250.42 | 4922.99 | 4939.39 | 1041.18 | 40°07'51.807"N | 104°42'26.491"W | 0.00 | |
| 12345.00† | 90.000 | 359.129 | 7250.42 | 5022.99 | 5039.38 | 1039.66 | 40°07'52.795"N | 104°42'26.510"W | 0.00 | |
| 12445.00† | 90.000 | 359.129 | 7250.42 | 5122.99 | 5139.36 | 1038.14 | 40°07'53.784"N | 104°42'26.530"W | 0.00 | |
| 12545.00† | 90.000 | 359.129 | 7250.42 | 5222.99 | 5239.35 | 1036.62 | 40°07'54.772"N | 104°42'26.549"W | 0.00 | |
| 12645.00† | 90.000 | 359.129 | 7250.42 | 5322.99 | 5339.34 | 1035.10 | 40°07'55.760"N | 104°42'26.569"W | 0.00 | |
| 12745.00† | 90.000 | 359.129 | 7250.42 | 5422.99 | 5439.33 | 1033.58 | 40°07'56.748"N | 104°42'26.588"W | 0.00 | |
| 12771.25 | 90.000 | 359.129 | 7250.42 ¹ | 5449.24 | 5465.57 | 1033.18 | 40°07'57.007"N | 104°42'26.593"W | 0.00 | TOTAL DEPTH |

HOLE & CASING SECTIONS - Ref Wellbore: RUSSIAN FIDDLER 36N-18HZX PWB Ref Wellpath: RUSSIAN FIDDLER 36N-18HZX (REV-A.1) PWP

| String/Diameter | Start MD [ft] | End MD [ft] | Interval [ft] | Start TVD [ft] | End TVD [ft] | Start N/S [ft] | Start E/W [ft] | End N/S [ft] | End E/W [ft] |
|-------------------------|---------------|-------------|---------------|----------------|--------------|----------------|----------------|--------------|--------------|
| 13.5in Open Hole | 13.00 | 1013.00 | 1000.00 | 13.00 | 1012.98 | 0.00 | 0.00 | 1.70 | 0.55 |
| 9.625in Casing Surface | 13.00 | 1013.00 | 1000.00 | 13.00 | 1012.98 | 0.00 | 0.00 | 1.70 | 0.55 |
| 8.75in Open Hole | 1013.00 | 7687.00 | 6674.00 | 1012.98 | 7210.44 | 1.70 | 0.55 | 384.34 | 1061.00 |
| 7in Casing Production | 13.00 | 7677.00 | 7664.00 | 13.00 | 7209.79 | 0.00 | 0.00 | 374.40 | 1060.18 |
| 6.125in Open Hole | 7677.00 | 9645.00 | 1968.00 | 7209.79 | 7204.89 | 374.40 | 1060.18 | 2340.57 | 1042.06 |
| 6.125in Open Hole | 9645.00 | 12771.25 | 3126.25 | 7204.89 | NA | 2340.57 | 1042.06 | NA | NA |
| 4.5in Casing Production | 13.00 | 12771.25 | 12758.25 | 13.00 | NA | 0.00 | 0.00 | NA | NA |



Planned Wellpath Report

RUSSIAN FIDDLER 36N-18HZX (REV-A.1) PWP

Page 6 of 7



| REFERENCE WELLPATH IDENTIFICATION | | | |
|-----------------------------------|---------------------------------|----------------|---|
| Operator | KERR-MCGEE OIL & GAS ONSHORE LP | Slot | SLOT#05 RUSSIAN FIDDLER 36N-18HZ (318'FSL & 1333'FWL, SEC.19) |
| Area | COLORADO | Well | RUSSIAN FIDDLER 36N-18HZX |
| Field | WELD COUNTY (KERR MCGEE) | Wellbore | RUSSIAN FIDDLER 36N-18HZX PWB |
| Facility | SEC.19-T2N-R65W | Sidetrack from | RUSSIAN FIDDLER 36N-18HZ AWB at 9645.00 MD |

| TARGETS | | | | | | | | | |
|--|----------|----------|------------|-----------|-------------------|--------------------|----------------|-----------------|---------|
| Name | MD [ft] | TVD [ft] | North [ft] | East [ft] | Grid East [US ft] | Grid North [US ft] | Latitude | Longitude | Shape |
| RUSSIAN FIDDLER 36N-18HZ LAND BOX | | 0.00 | 5438.63 | -819.83 | 3219766.37 | 1292061.24 | 40°07'56.741"N | 104°42'50.450"W | polygon |
| RUSSIAN FIDDLER 5 PAD HARD LINES (460' SETBACKS, SEC.18) | | 0.00 | 5438.63 | -819.83 | 3219766.37 | 1292061.24 | 40°07'56.741"N | 104°42'50.450"W | polygon |
| RUSSIAN FIDDLER 5 PAD HARD LINES (460' SETBACKS, SEC.19) | | 0.00 | 5438.63 | -819.83 | 3219766.37 | 1292061.24 | 40°07'56.741"N | 104°42'50.450"W | polygon |
| RUSSIAN FIDDLER 5 PAD SECTION LINES (SEC.18) | | 0.00 | 5438.61 | -819.83 | 3219766.37 | 1292061.22 | 40°07'56.741"N | 104°42'50.450"W | polygon |
| RUSSIAN FIDDLER 5 PAD SECTION LINES (SEC.19) | | 0.00 | 5438.63 | -819.83 | 3219766.37 | 1292061.24 | 40°07'56.741"N | 104°42'50.450"W | polygon |
| RUSSIAN FIDDLER 36N-18HZ BHL ON PLAT REV-1 (460'FSL & 2388'FWL, SEC.18) | | 7173.00 | 5465.55 | 1033.20 | 3221619.01 | 1292104.65 | 40°07'57.007"N | 104°42'26.593"W | point |
| RUSSIAN FIDDLER 36N-18HZ REV-2 (100'FSL & 2390'FWL, SEC.18) | | 7173.00 | 5105.63 | 1034.85 | 3221623.86 | 1291744.77 | 40°07'53.450"N | 104°42'26.572"W | point |
| 1) RUSSIAN FIDDLER 36N-18HZ BHL ON PLAT (460'FSL & 2388'FWL, SEC.18) REV-2 | 12771.25 | 7250.42 | 5465.57 | 1033.18 | 3221618.99 | 1292104.67 | 40°07'57.007"N | 104°42'26.593"W | point |
| RUSSIAN FIDDLER 36N-18HZ REV-3 (100'FSL & 2390'FWL, SEC.18) | | 7250.52 | 5105.63 | 1034.85 | 3221623.86 | 1291744.77 | 40°07'53.450"N | 104°42'26.572"W | point |

| SURVEY PROGRAM - Ref Wellbore: RUSSIAN FIDDLER 36N-18HZX PWB | | | | Ref Wellpath: RUSSIAN FIDDLER 36N-18HZX (REV-A.1) PWP | |
|--|-------------|--------------------------------------|------------------|---|--|
| Start MD [ft] | End MD [ft] | Positional Uncertainty Model | Log Name/Comment | Wellbore | |
| 13.00 | 913.00 | Generic gyro - continuous (Standard) | | RUSSIAN FIDDLER 36N-18HZ AWB | |
| 913.00 | 7624.00 | NaviTrak (MAGCORR,IFR) | | RUSSIAN FIDDLER 36N-18HZ AWB | |
| 7624.00 | 9645.00 | OnTrak (MAGCORR,IFR) | | RUSSIAN FIDDLER 36N-18HZ AWB | |
| 9645.00 | 12771.25 | OnTrak (MAGCORR,IFR) | | RUSSIAN FIDDLER 36N-18HZX PWB | |



Planned Wellpath Report

RUSSIAN FIDDLER 36N-18HZX (REV-A.1) PWP

Page 7 of 7



| REFERENCE WELLPATH IDENTIFICATION | | | |
|-----------------------------------|---------------------------------|----------------|---|
| Operator | KERR-MCGEE OIL & GAS ONSHORE LP | Slot | SLOT#05 RUSSIAN FIDDLER 36N-18HZ (318'FSL & 1333'FWL, SEC.19) |
| Area | COLORADO | Well | RUSSIAN FIDDLER 36N-18HZX |
| Field | WELD COUNTY (KERR MCGEE) | Wellbore | RUSSIAN FIDDLER 36N-18HZX PWB |
| Facility | SEC.19-T2N-R65W | Sidetrack from | RUSSIAN FIDDLER 36N-18HZ AWB at 9645.00 MD |

| WELLPATH COMMENTS | | | | |
|-------------------|--------------------|----------------|-------------|----------------|
| MD [ft] | Inclination [°] | Azimuth [°] | TVD [ft] | Comment |
| 4160.92 | 13.789 | 105.336 | 4085.00 | PARKMAN |
| 4706.67 | 15.329 | 100.930 | 4613.00 | SUSSEX |
| 7260.37 | 50.050 | 358.197 | 7063.00 | SHARON SPRINGS |
| 7353.76 | 58.180 | 356.309 | 7118.00 | NIOBRARA A |
| 7437.50 | 66.225 | 356.663 | 7157.00 | NIOBRARA B |

| DESIGN COMMENTS | | | | |
|-----------------|--------------------|----------------|-------------|-------------|
| MD [ft] | Inclination [°] | Azimuth [°] | TVD [ft] | Comment |
| 9645.00 | 90.731 | 359.027 | 7204.89 | Tie On |
| 9823.72 | 87.750 | 1.000 | 7207.26 | BEGIN TURN |
| 10850.00 | 87.750 | 1.000 | 7247.55 | END TURN |
| 10996.30 | 90.000 | 359.129 | 7250.42 | BEGIN BUILD |
| 12771.25 | 90.000 | 359.129 | 7250.42 | TOTAL DEPTH |