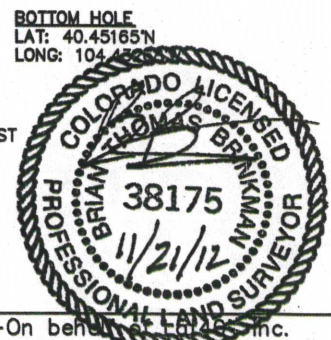
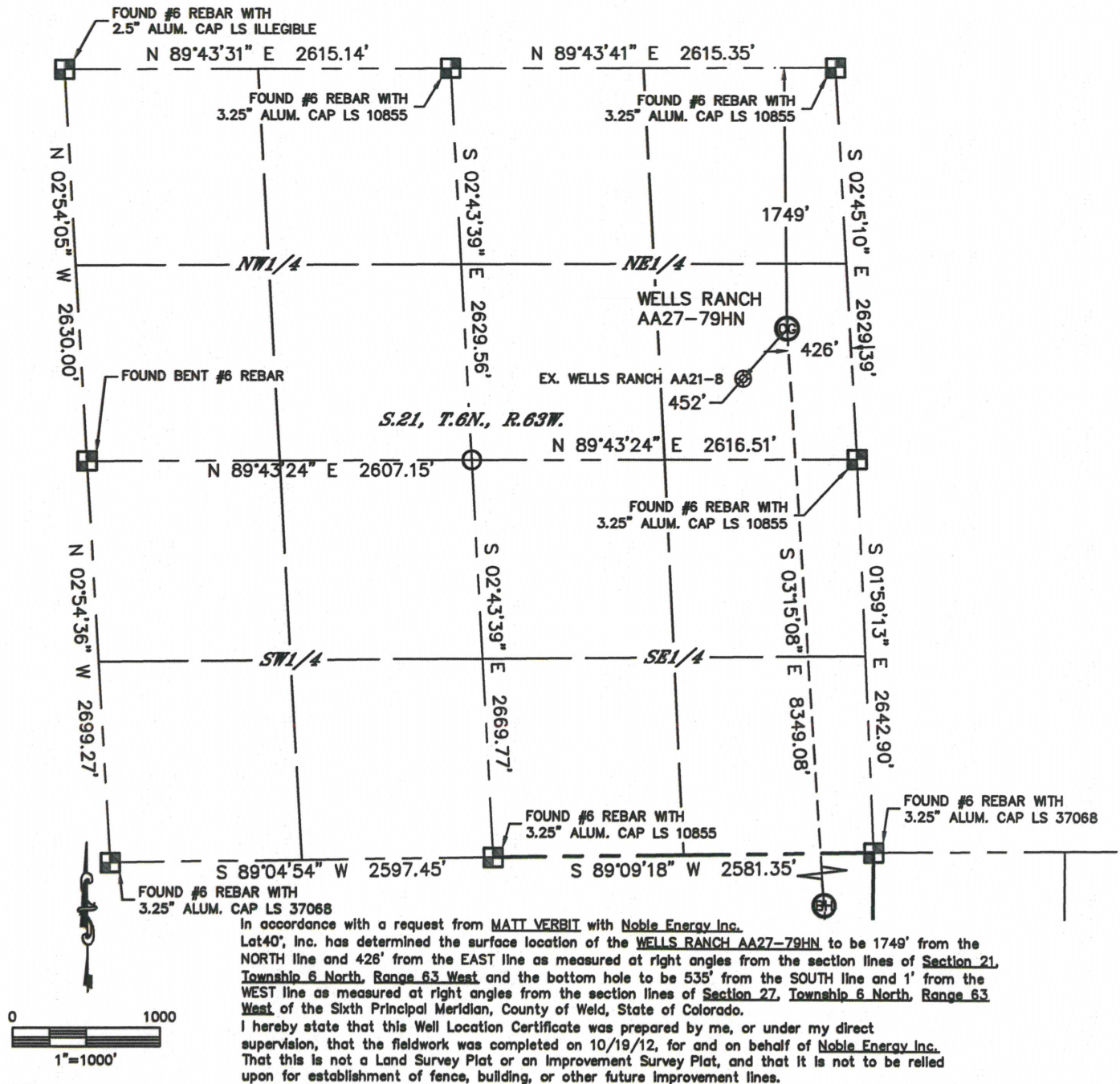


# WELL LOCATION CERTIFICATE

THIS MAP DOES NOT REPRESENT A BOUNDARY SURVEY

SECTION: 21  
TOWNSHIP: 6N  
RANGE: 63W



**NOTE**  
According to Colorado law, you must commence any legal action based upon any defect in this W.L.C. within three years after you discover such defect. In no event, may any action based upon any defect in this survey be commenced more than ten years after the date of the certificate shown hereon. (13-80-105 C.R.S.)

**LEGEND**  
 = ALIQUOT MONUMENT AS DESCRIBED  
 = CALCULATED POSITION

**SHEET 1 OF 2**

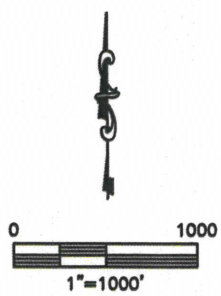
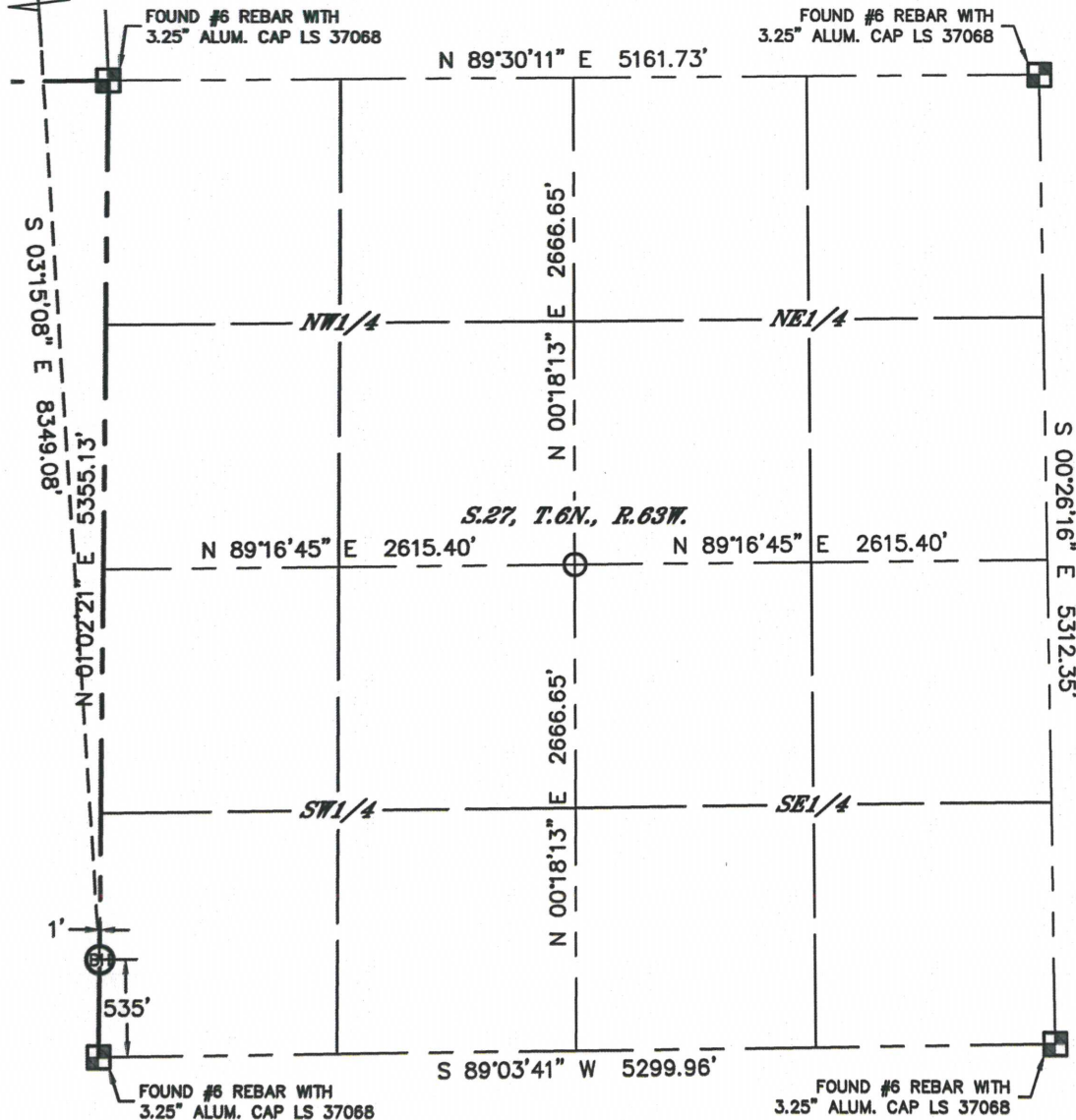
Brian T. Brinkman—On behalf of Lat40°, Inc.  
Colorado Licensed Professional  
Land Surveyor No. 38175  
DATE: 11/16/2012  
PROJECT#: 2012141

WELLS RANCH  
AA27-79HN

# WELL LOCATION CERTIFICATE

SECTION: 21  
TOWNSHIP: 6N  
RANGE: 63W

THIS MAP DOES NOT REPRESENT A BOUNDARY SURVEY



**NOTE**

According to Colorado law, you must commence any legal action based upon any defect in this W.L.C. within three years after you discover such defect. In no event, may any action based upon any defect in this survey be commenced more than ten years after the date of the certificate shown hereon. (13-80-105 C.R.S.)

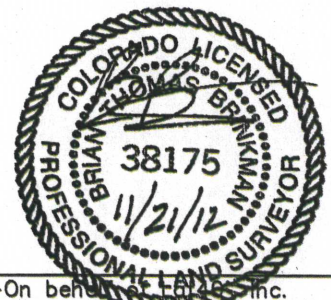
**LEGEND**

- = ALIQUOT MONUMENT AS DESCRIBED
- = CALCULATED POSITION

**SHEET 2 OF 2**

Brian T. Brinkman—On behalf of Lat40°, Inc.  
Colorado Licensed Professional  
Land Surveyor No. 38175

DATE: 11/16/2012  
PROJECT#: 2012141





## SITE SKETCH

WELLS RANCH AA27-79HN  
(SHEET 2 OF 2)

SECTION: 21  
TOWNSHIP: 6N  
RANGE: 63W

⑦

WELLS RANCH  
STATE 41-28  
NE1/4NE1/4  
679' FNL  
696' FEL  
LAT-40.46300N  
LONG-104.43474W  
PDOP: 1.9  
ELEV: 4773'

⑧

WELLS RANCH AA21-26  
SE1/4SE1/4  
669' FSL  
725' FEL  
LAT-40.46670N  
LONG-104.43482W  
PDOP: 1.6  
ELEV: 4733'

⑨

WELLS RANCH AA21-9  
NE1/4SE1/4  
1939' FSL  
711' FEL  
LAT-40.47019N  
LONG-104.43487W  
PDOP: 1.6  
ELEV: 4724'

⑫

WELLS RANCH AA21-8  
SE1/4NE1/4  
2084' FNL  
744' FEL  
LAT-40.47363N  
LONG-104.43512W  
PDOP: 2.1  
ELEV: 4721'

⑫

WELLS RANCH  
PC AA22-5  
SW1/4NW1/4  
1998' FNL  
664' FNL  
LAT-40.47385N  
LONG-104.43007W  
PDOP: 1.4  
ELEV: 4742'

⑫

WELLS RANCH  
STATE 42-28  
SE1/4NE1/4  
2000' FNL  
814' FEL  
LAT-40.45938N  
LONG-104.43530W  
PDOP: 2.4  
ELEV: 4797'

⑫

WELLS RANCH  
STATE 43-28  
NE1/4SE1/4  
1987' FSL  
636' FEL  
LAT-40.45564N  
LONG-104.43481W  
PDOP: 2.2  
ELEV: 4779'

⑫

WELLS RANCH  
STATE 44-28  
SE1/4SE1/4  
739' FSL  
734' FEL  
LAT-40.45222N  
LONG-104.43530W  
PDOP: 2.4  
ELEV: 4768'

⑫

STATE LEASE 6524 41-28  
(PLUGGED & ABANDONED)  
NE1/4NE1/4 (COGCC)  
660' FNL (COGCC)  
538' FEL (COGCC)  
LAT-40.46288N (COGCC)  
LONG-104.43460W (COGCC)  
PDOP: N/A  
ELEV: 4778' (COGCC)

⑫

WELLS RANCH 14-27  
SW1/4SW1/4  
678' FSL  
682' FNL  
LAT-40.45205N  
LONG-104.43026W  
PDOP: 1.3  
ELEV: 4800'

⑫

WELLS RANCH 13-27  
NW1/4SW1/4  
2018' FSL  
676' FNL  
LAT-40.45573N  
LONG-104.43009W  
PDOP: 2.2  
ELEV: 4816'

⑫

UPV 27-5G3  
SW1/4NW1/4  
2027' FNL  
644' FNL  
LAT-40.45930N  
LONG-104.43006W  
PDOP: 2.1  
ELEV: 4793'

⑫

UPV 27-4G3  
NW1/4NW1/4  
662' FNL  
586' FNL  
LAT-40.46305N  
LONG-104.43013W  
PDOP: 2.0  
ELEV: 4749'

⑫

WELLS RANCH PC AA22-13  
SW1/4SW1/4  
818' FSL  
530 FNL  
LAT-40.46711N  
LONG-104.43032W  
PDOP: 1.6  
ELEV: 4757'

