

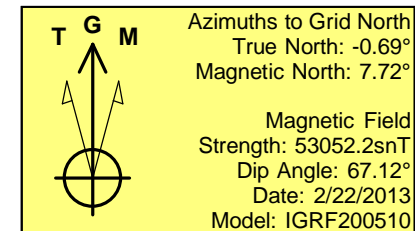
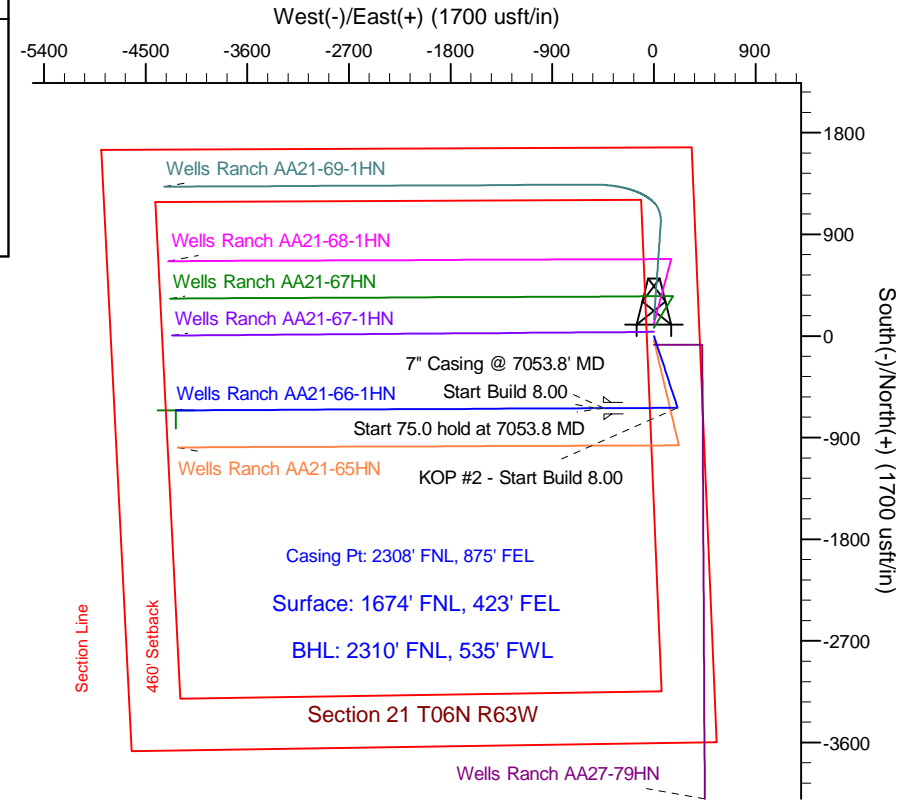
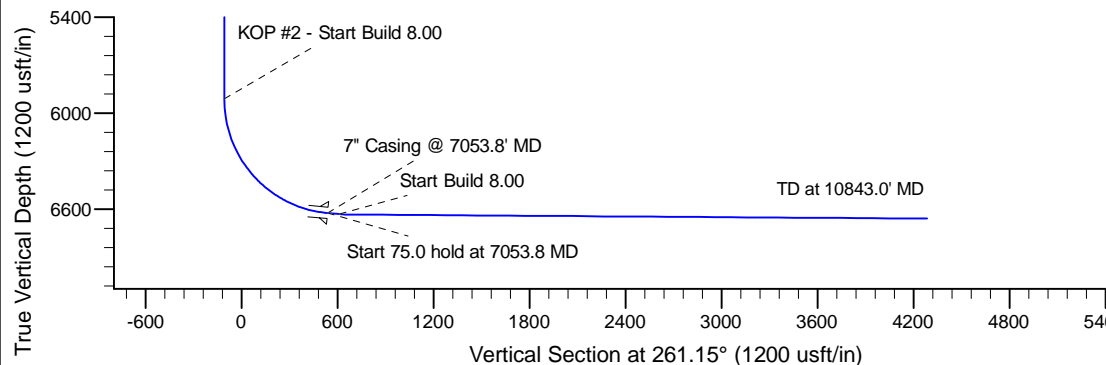
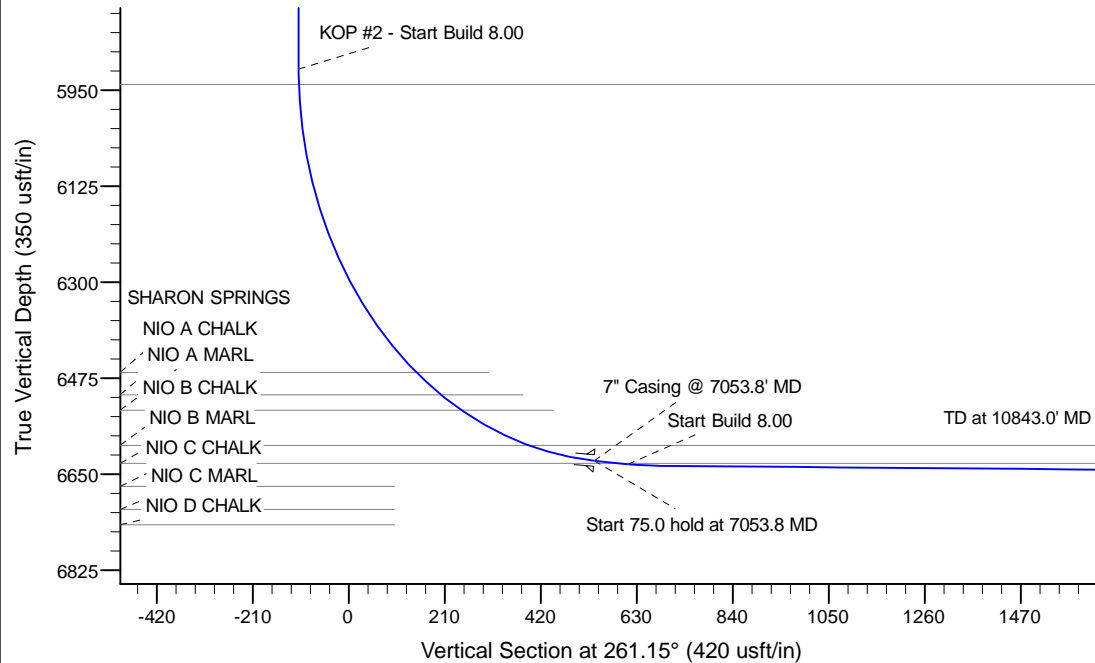
Project: Wattenberg Field  
 Site: AA (Sec.21-T06N-R63W) Weld County, CO  
 Well: Wells Ranch AA21-66-1HN  
 Wellbore: Original Drilling  
 Design: APD - Rev 0

# Northern Region Drilling

Geodetic System: US State Plane 1983  
 Datum: North American Datum 1983  
 Ellipsoid: GRS 1980  
 Zone: Colorado Northern Zone  
 System Datum: Mean Sea Level

## SECTION DETAILS

Sec	MD	Inc	Azi	TVD	+N/-S	+E/-W	Dleg	TFace	VSec	Target
1	0.0	0.00	0.00	0.0	0.0	0.0	0.00	0.00	0.0	
2	1800.0	0.00	0.00	1800.0	0.0	0.0	0.00	0.00	0.0	
3	2551.6	15.03	161.73	2543.0	-93.1	30.7	2.00	161.73	-16.0	
4	4378.1	15.03	161.73	4307.0	-542.9	179.3	0.00	0.00	-93.6	
5	5129.7	0.00	0.00	5050.0	-636.0	210.0	2.00	180.00	-109.7	
6	5991.3	0.00	0.00	5911.7	-636.0	210.0	0.00	0.00	-109.7	
7	7053.8	85.00	269.70	6625.1	-639.4	-443.8	8.00	269.70	536.8	
8	7128.8	85.00	269.70	6631.7	-639.8	-518.5	0.00	0.00	610.7	
9	7186.3	89.60	269.70	6634.4	-640.1	-575.9	8.00	0.00	667.5	
10	10843.0	89.60	269.70	6659.9	-659.0	-4232.5	0.00	0.00	4283.4	Wells Ranch AA21-66-1HN BHL 2310'FNL, 535'FWL



## WELL DETAILS: Wells Ranch AA21-66-1HN

Ground Level: 4727.0			
Northing	Easting	Latitude	Longitude
0.0	0.0	1417574.29	3296551.97
		40.474750	-104.434020

Plan: APD - Rev 0 (Wells Ranch AA21-66-1HN/Original Drilling)

Created By: Shailey Jewell Date: 13:51, March 13 2013

Checked: \_\_\_\_\_ Date: \_\_\_\_\_

Reviewed: \_\_\_\_\_ Date: \_\_\_\_\_

Approved: \_\_\_\_\_ Date: \_\_\_\_\_