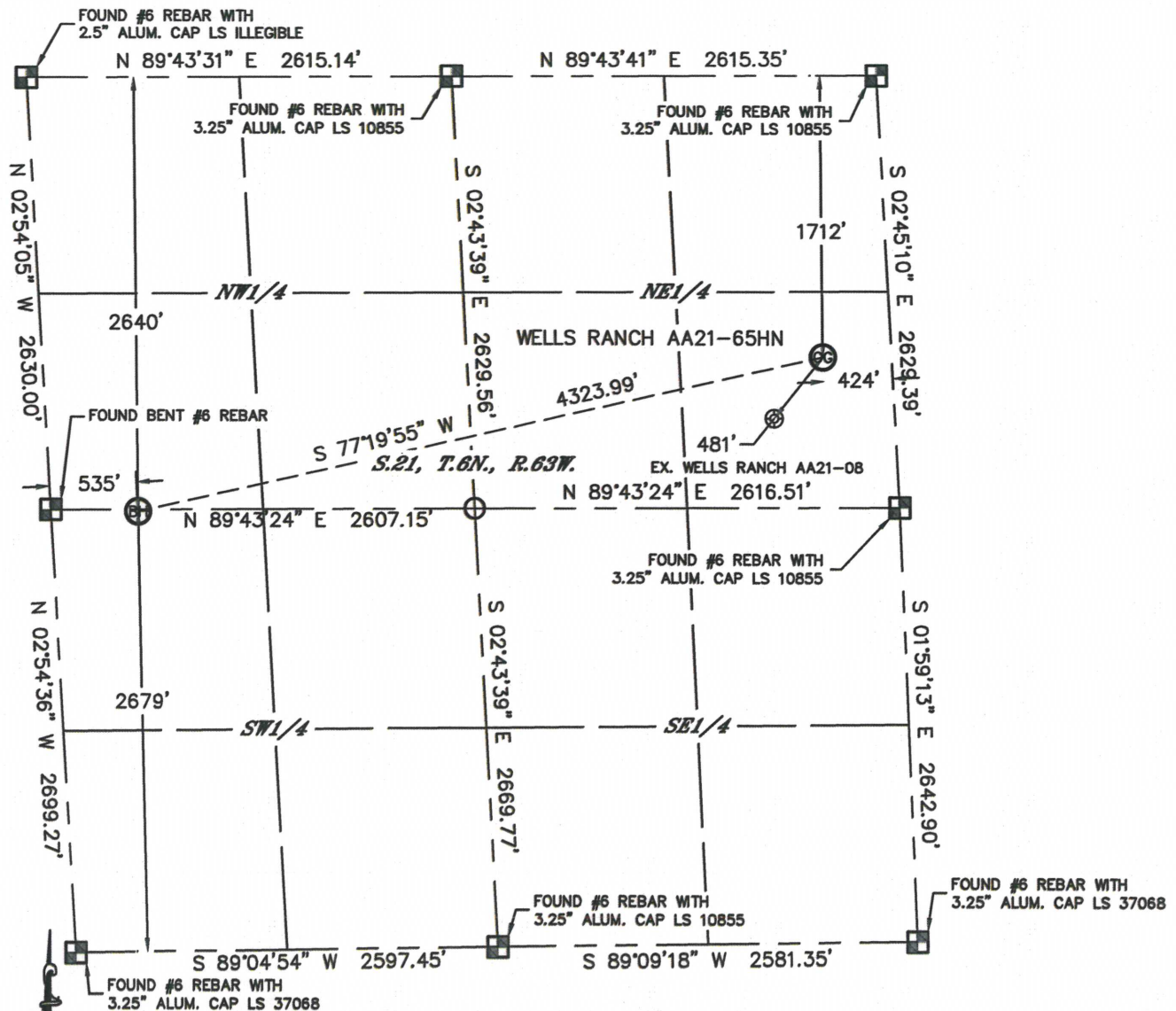


WELL LOCATION CERTIFICATE

THIS MAP DOES NOT REPRESENT A BOUNDARY SURVEY

SECTION: 21
TOWNSHIP: 6N
RANGE: 63W



In accordance with a request from MATT VERBIT with Noble Energy Inc., Lat40°, Inc. has determined the surface location of the WELLS RANCH AA21-65HN to be 1712' from the NORTH line and 424' from the EAST line and the bottom hole to be 2679' from the SOUTH line and 535' from the WEST line as measured at right angles from the section lines of Section 21, Township 6 North, Range 63 West of the Sixth Principal Meridian, County of Weld, State of Colorado.

I hereby state that this Well Location Certificate was prepared by me, or under my direct supervision, that the fieldwork was completed on 10/19/12, for and on behalf of Noble Energy Inc.. That this is not a Land Survey Plat or an Improvement Survey Plat, and that it is not to be relied upon for establishment of fence, building, or other future improvement lines.

NOTE:

- 1) Bearings shown are Grid Bearings of the Colorado State Plane Coordinate System, North Zone, North American Datum 1983/2007. The lined dimensions as contained herein are based upon the "U.S. Survey Foot."
- 2) Ground elevations are based on an observed GPS elevation (NAVD 1988 DATUM).
- 3) NEAREST EXISTING WELL: WELLS RANCH AA21-08, 481'
- 4) IMPROVEMENTS: See LOCATION DRAWING for all visible improvements within 400' of disturbed area.
- 5) SURFACE USE: RANGELAND
- 6) INSTRUMENT OPERATOR: ADAM KELLY

NOTE

According to Colorado law, you must commence any legal action based upon any defect in this W.L.C. within three years after you discover such defect. In no event, may any action based upon any defect in this survey be commenced more than ten years after the date of the certificate shown hereon. (13-80-105 C.R.S.)

LEGEND

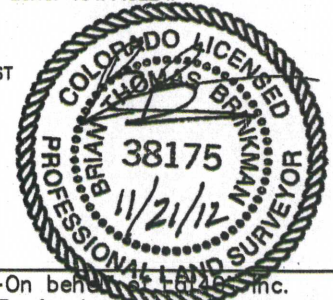
- = ALIQUOT MONUMENT AS DESCRIBED
- = CALCULATED POSITION

SURFACE LOCATION

LAT: 40.47464°N
LONG: 104.43402°W
PDOP: 1.6
ELEV: 4727'
1/4, 1/4: SE1/4NE1/4
NEAREST PROPERTY LINE: 424' EAST

BOTTOM HOLE

LAT: 40.47218°N
LONG: 104.44922°W



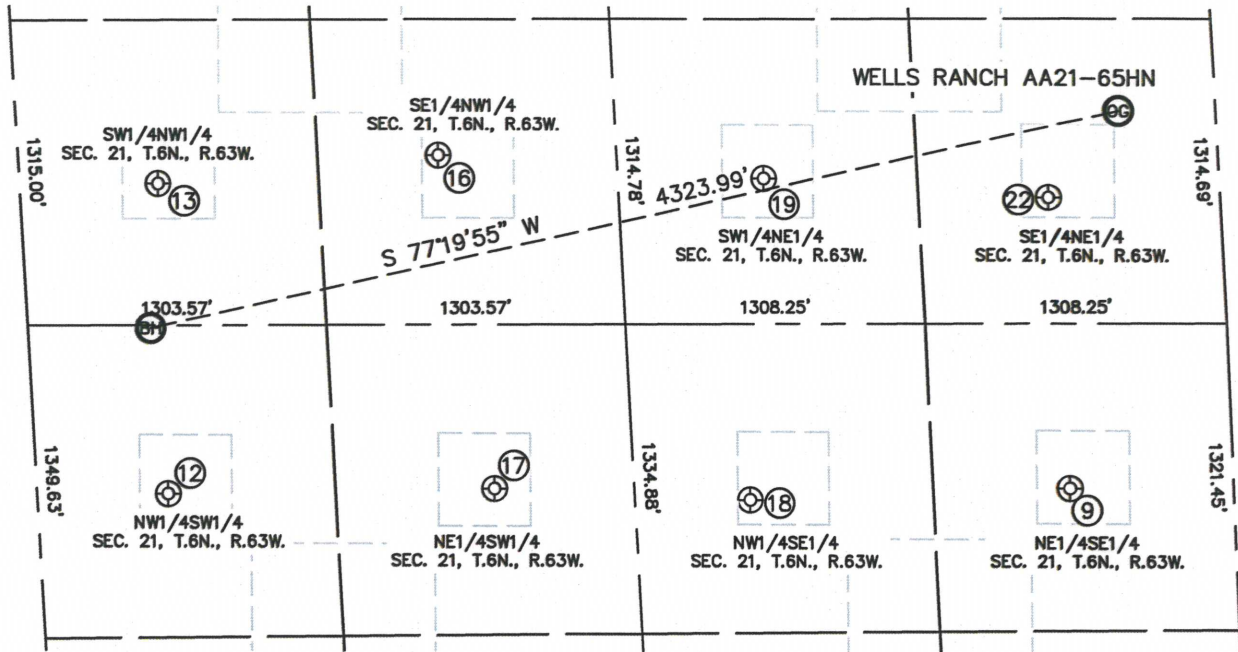
Brian T. Brinkman—On behalf of Lat40°, Inc.
Colorado Licensed Professional
Land Surveyor No. 38175

DATE: 11/16/2012
PROJECT#: 2012141

SITE SKETCH

WELLS RANCH AA21-65HN

SECTION: 21
TOWNSHIP: 6N
RANGE: 63W



⑨

WELLS RANCH AA21-9
NE1/4SE1/4
1939' FSL
711' FWL
LAT-40.47019°N
LONG-104.43487°W
PDOP:1.8
ELEV: 4724'

⑫

WELLS RANCH AA21-12
NW1/4SW1/4
1965' FSL
571' FWL
LAT-40.47022°N
LONG-104.44899°W
PDOP:1.8
ELEV: 4681'

⑬

WELLS RANCH AA21-5
SW1/4NW1/4
2018' FNL
602' FWL
LAT-40.47388°N
LONG-104.44907°W
PDOP:1.8
ELEV: 4672'

⑯

WELLS RANCH AA21-6
SE1/4NW1/4
1899' FNL
1829' FWL
LAT-40.47419°N
LONG-104.44467°W
PDOP:1.7
ELEV: 4677'

⑰

WELLS RANCH AA21-11
NE1/4SW1/4
1967' FSL
1992' FWL
LAT-40.47024°N
LONG-104.44388°W
PDOP:2.1
ELEV: 4703'

⑱

WELLS RANCH AA21-10
NW1/4SE1/4
1905' FSL
2104' FEL
LAT-40.47008°N
LONG-104.43988°W
PDOP:1.9
ELEV: 4708'

⑲

WELLS RANCH AA21-7
SW1/4NE1/4
2001' FNL
1979' FEL
LAT-40.47388°N
LONG-104.43957°W
PDOP:2.0
ELEV: 4701'

⑳

WELLS RANCH AA21-8
SE1/4NE1/4
2084' FNL
744' FEL
LAT-40.47363°N
LONG-104.43512°W
PDOP:2.1
ELEV: 4721'

