

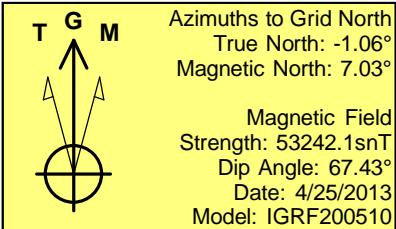
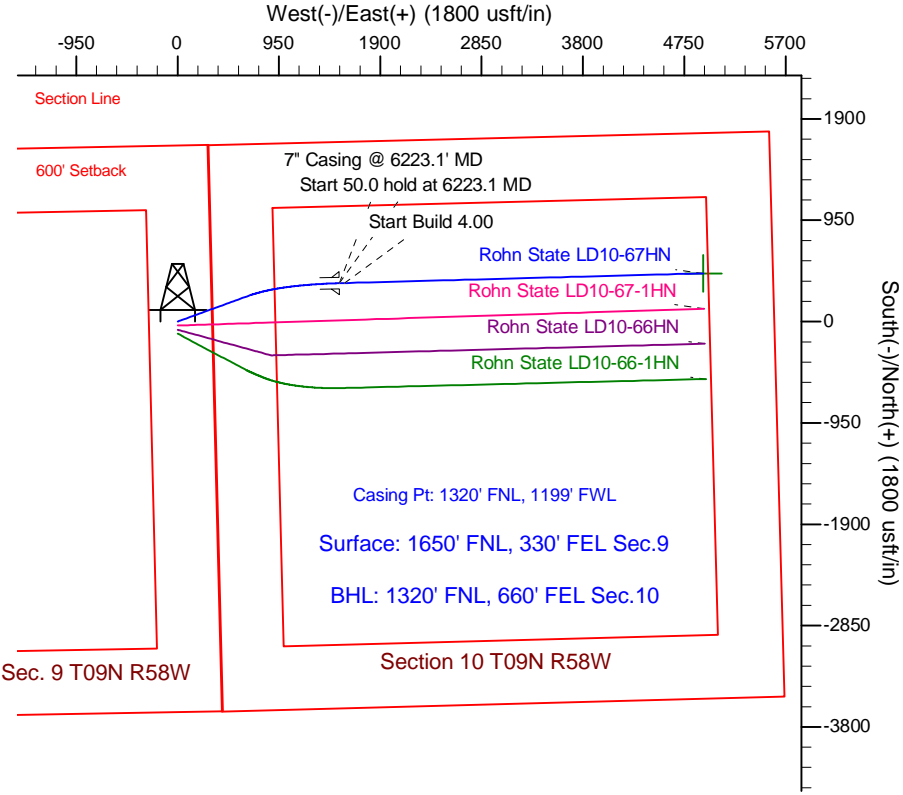
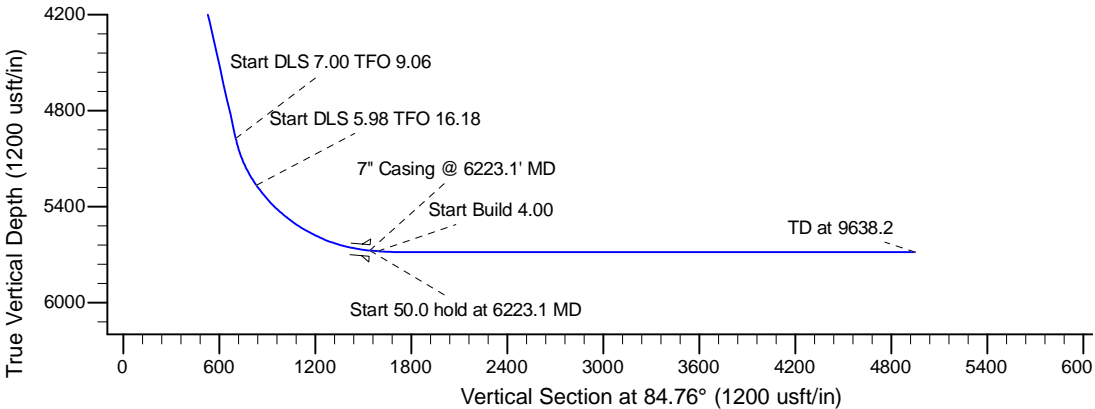
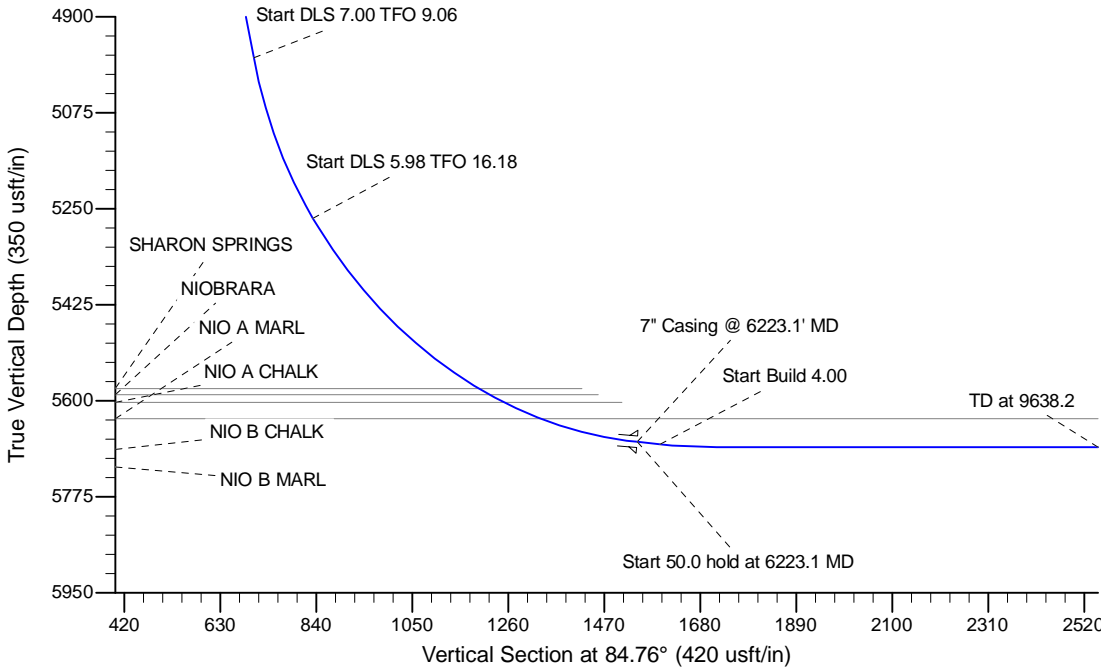
Project: Wattenberg Field
Site: LD (Sec.9-T09N-R58W) Weld County, CO
Well: Rohn State LD10-67HN
Wellbore: Original Drilling
Design: APD - Rev 0

Northern Region Drilling

Geodetic System: US State Plane 1983
Datum: North American Datum 1983
Ellipsoid: GRS 1980
Zone: Colorado Northern Zone
System Datum: Mean Sea Level

SECTION DETAILS

Sec	MD	Inc	Azi	TVD	+N/-S	+E/-W	Dleg	TFace	VSec	Target
1	0.0	0.00	0.00	0.0	0.0	0.0	0.00	0.00	0.0	
2	1500.0	0.00	0.00	1500.0	0.0	0.0	0.00	0.00	0.0	
3	2150.0	13.00	70.00	2144.4	25.1	69.0	2.00	70.00	71.0	
4	5055.0	13.00	70.00	4975.0	248.6	683.1	0.00	0.00	702.9	
5	5378.0	35.50	75.98	5267.6	284.2	809.8	7.00	9.06	832.4	
6	6223.1	85.00	88.45	5675.2	360.0	1515.0	5.98	16.18	1541.6	
7	6273.1	85.00	88.45	5679.6	361.3	1564.8	0.00	0.00	1591.3	
8	6398.1	90.00	88.45	5685.0	364.7	1689.6	4.00	0.00	1715.9	
9	9638.2	90.00	88.45	5685.0	452.4	4928.5	0.00	0.00	4949.2	Rohn State LD10-67HN BHL 1320'FNL, 660'FEL



WELL DETAILS: Rohn State LD10-67HN				
Ground Level: 4730.0				
	Northing	Easting	Latitude	Longitude
0.0	0.0	1527052.32	3453931.60	40.768630
				-103.861140
Plan: APD - Rev 0 (Rohn State LD10-67HN/Original Drilling)				
Created By: Shailey Jewell			Date: 10:48, May 02 2013	
Checked: _____			Date: _____	
Reviewed: _____			Date: _____	
Approved: _____			Date: _____	

Northern Region Drilling

Wattenberg Field

LD (09N-58W)

Rohn State LD10-67HN

Original Drilling

Plan: APD - Rev 0

Standard Planning Report

02 May, 2013

Noble Energy Inc

Planning Report

Database:	EDM Production	Local Co-ordinate Reference:	Well Rohn State LD10-67HN
Company:	Northern Region Drilling	TVD Reference:	WELL @ 4760.0usft (Original Well Elev)
Project:	Wattenberg Field	MD Reference:	WELL @ 4760.0usft (Original Well Elev)
Site:	LD (09N-58W)	North Reference:	Grid
Well:	Rohn State LD10-67HN	Survey Calculation Method:	Minimum Curvature
Wellbore:	Original Drilling		
Design:	APD - Rev 0		

Project	Wattenberg Field, Weld County CO		
Map System:	US State Plane 1983	System Datum:	Mean Sea Level
Geo Datum:	North American Datum 1983		
Map Zone:	Colorado Northern Zone		Using geodetic scale factor

Site		LD (09N-58W)			
Site Position:		Northing:	1,523,557.18 usft	Latitude:	40.759270
From:	Lat/Long	Easting:	3,449,341.23 usft	Longitude:	-103.877940
Position Uncertainty:	0.0 usft	Slot Radius:	13-3/16 "	Grid Convergence:	1.05 °

Well	Rohn State LD10-67HN					
Well Position	+N/-S	3,495.2 usft	Northing:	1,527,052.33 usft	Latitude:	40.768630
	+E/-W	4,590.4 usft	Easting:	3,453,931.60 usft	Longitude:	-103.861140
Position Uncertainty		0.0 usft	Wellhead Elevation:		Ground Level:	4,730.0 usft

Wellbore	Original Drilling				
Magnetics	Model Name	Sample Date	Declination (°)	Dip Angle (°)	Field Strength (nT)
	IGRF200510	4/25/2013	8.09	67.43	53,242

Design	APD - Rev 0			
Audit Notes:				
Version:	Phase:	PROTOTYPE	Tie On Depth:	0.0
Vertical Section:	Depth From (TVD) (usft)	+N/-S (usft)	+E/-W (usft)	Direction (°)
	0.0	0.0	0.0	84.76

Plan Sections										
Measured Depth (usft)	Inclination (°)	Azimuth (°)	Vertical Depth (usft)	+N/-S (usft)	+E/-W (usft)	Dogleg Rate (°/100usft)	Build Rate (°/100usft)	Turn Rate (°/100usft)	TFO (°)	Target
0.0	0.00	0.00	0.0	0.0	0.0	0.00	0.00	0.00	0.00	
1,500.0	0.00	0.00	1,500.0	0.0	0.0	0.00	0.00	0.00	0.00	
2,150.0	13.00	70.00	2,144.4	25.1	69.0	2.00	2.00	0.00	70.00	
5,055.0	13.00	70.00	4,975.0	248.6	683.1	0.00	0.00	0.00	0.00	
5,378.0	35.50	75.98	5,267.6	284.2	809.8	7.00	6.97	1.85	9.06	
6,223.1	85.00	88.45	5,675.2	360.0	1,515.0	5.98	5.86	1.47	16.18	
6,273.1	85.00	88.45	5,679.6	361.3	1,564.8	0.00	0.00	0.00	0.00	
6,398.1	90.00	88.45	5,685.0	364.7	1,689.6	4.00	4.00	0.00	0.00	
9,638.2	90.00	88.45	5,685.0	452.4	4,928.5	0.00	0.00	0.00	0.00	Rohn State LD10-67H

Noble Energy Inc

Planning Report

Database:	EDM Production	Local Co-ordinate Reference:	Well Rohn State LD10-67HN
Company:	Northern Region Drilling	TVD Reference:	WELL @ 4760.0usft (Original Well Elev)
Project:	Wattenberg Field	MD Reference:	WELL @ 4760.0usft (Original Well Elev)
Site:	LD (09N-58W)	North Reference:	Grid
Well:	Rohn State LD10-67HN	Survey Calculation Method:	Minimum Curvature
Wellbore:	Original Drilling		
Design:	APD - Rev 0		

Planned Survey									
Measured Depth (usft)	Inclination (°)	Azimuth (°)	Vertical Depth (usft)	+N/-S (usft)	+E/-W (usft)	Vertical Section (usft)	Dogleg Rate (°/100usft)	Build Rate (°/100usft)	Turn Rate (°/100usft)
0.0	0.00	0.00	0.0	0.0	0.0	0.0	0.00	0.00	0.00
50.0	0.00	0.00	50.0	0.0	0.0	0.0	0.00	0.00	0.00
100.0	0.00	0.00	100.0	0.0	0.0	0.0	0.00	0.00	0.00
150.0	0.00	0.00	150.0	0.0	0.0	0.0	0.00	0.00	0.00
200.0	0.00	0.00	200.0	0.0	0.0	0.0	0.00	0.00	0.00
250.0	0.00	0.00	250.0	0.0	0.0	0.0	0.00	0.00	0.00
300.0	0.00	0.00	300.0	0.0	0.0	0.0	0.00	0.00	0.00
350.0	0.00	0.00	350.0	0.0	0.0	0.0	0.00	0.00	0.00
400.0	0.00	0.00	400.0	0.0	0.0	0.0	0.00	0.00	0.00
450.0	0.00	0.00	450.0	0.0	0.0	0.0	0.00	0.00	0.00
500.0	0.00	0.00	500.0	0.0	0.0	0.0	0.00	0.00	0.00
550.0	0.00	0.00	550.0	0.0	0.0	0.0	0.00	0.00	0.00
600.0	0.00	0.00	600.0	0.0	0.0	0.0	0.00	0.00	0.00
650.0	0.00	0.00	650.0	0.0	0.0	0.0	0.00	0.00	0.00
700.0	0.00	0.00	700.0	0.0	0.0	0.0	0.00	0.00	0.00
750.0	0.00	0.00	750.0	0.0	0.0	0.0	0.00	0.00	0.00
800.0	0.00	0.00	800.0	0.0	0.0	0.0	0.00	0.00	0.00
850.0	0.00	0.00	850.0	0.0	0.0	0.0	0.00	0.00	0.00
900.0	0.00	0.00	900.0	0.0	0.0	0.0	0.00	0.00	0.00
950.0	0.00	0.00	950.0	0.0	0.0	0.0	0.00	0.00	0.00
1,000.0	0.00	0.00	1,000.0	0.0	0.0	0.0	0.00	0.00	0.00
1,050.0	0.00	0.00	1,050.0	0.0	0.0	0.0	0.00	0.00	0.00
1,100.0	0.00	0.00	1,100.0	0.0	0.0	0.0	0.00	0.00	0.00
1,150.0	0.00	0.00	1,150.0	0.0	0.0	0.0	0.00	0.00	0.00
1,200.0	0.00	0.00	1,200.0	0.0	0.0	0.0	0.00	0.00	0.00
1,250.0	0.00	0.00	1,250.0	0.0	0.0	0.0	0.00	0.00	0.00
1,300.0	0.00	0.00	1,300.0	0.0	0.0	0.0	0.00	0.00	0.00
1,350.0	0.00	0.00	1,350.0	0.0	0.0	0.0	0.00	0.00	0.00
1,400.0	0.00	0.00	1,400.0	0.0	0.0	0.0	0.00	0.00	0.00
1,450.0	0.00	0.00	1,450.0	0.0	0.0	0.0	0.00	0.00	0.00
1,500.0	0.00	0.00	1,500.0	0.0	0.0	0.0	0.00	0.00	0.00
KOP - Start Build 2.00									
1,550.0	1.00	70.00	1,550.0	0.1	0.4	0.4	2.00	2.00	0.00
1,600.0	2.00	70.00	1,600.0	0.6	1.6	1.7	2.00	2.00	0.00
1,650.0	3.00	70.00	1,649.9	1.3	3.7	3.8	2.00	2.00	0.00
1,700.0	4.00	70.00	1,699.8	2.4	6.6	6.7	2.00	2.00	0.00
1,750.0	5.00	70.00	1,749.7	3.7	10.2	10.5	2.00	2.00	0.00
1,800.0	6.00	70.00	1,799.5	5.4	14.7	15.2	2.00	2.00	0.00
1,850.0	7.00	70.00	1,849.1	7.3	20.1	20.6	2.00	2.00	0.00
1,900.0	8.00	70.00	1,898.7	9.5	26.2	27.0	2.00	2.00	0.00
1,950.0	9.00	70.00	1,948.2	12.1	33.1	34.1	2.00	2.00	0.00
2,000.0	10.00	70.00	1,997.5	14.9	40.9	42.1	2.00	2.00	0.00
2,050.0	11.00	70.00	2,046.6	18.0	49.5	50.9	2.00	2.00	0.00
2,100.0	12.00	70.00	2,095.6	21.4	58.8	60.5	2.00	2.00	0.00
2,150.0	13.00	70.00	2,144.4	25.1	69.0	71.0	2.00	2.00	0.00
Start 2905.0 hold at 2150.0 MD									
2,200.0	13.00	70.00	2,193.2	29.0	79.6	81.9	0.00	0.00	0.00
2,250.0	13.00	70.00	2,241.9	32.8	90.1	92.8	0.00	0.00	0.00
2,300.0	13.00	70.00	2,290.6	36.7	100.7	103.6	0.00	0.00	0.00
2,350.0	13.00	70.00	2,339.3	40.5	111.3	114.5	0.00	0.00	0.00
2,391.8	13.00	70.00	2,380.0	43.7	120.1	123.6	0.00	0.00	0.00
PIERRE									
2,400.0	13.00	70.00	2,388.0	44.3	121.8	125.4	0.00	0.00	0.00

Noble Energy Inc

Planning Report

Database:	EDM Production	Local Co-ordinate Reference:	Well Rohn State LD10-67HN
Company:	Northern Region Drilling	TVD Reference:	WELL @ 4760.0usft (Original Well Elev)
Project:	Wattenberg Field	MD Reference:	WELL @ 4760.0usft (Original Well Elev)
Site:	LD (09N-58W)	North Reference:	Grid
Well:	Rohn State LD10-67HN	Survey Calculation Method:	Minimum Curvature
Wellbore:	Original Drilling		
Design:	APD - Rev 0		

Planned Survey									
Measured Depth (usft)	Inclination (°)	Azimuth (°)	Vertical Depth (usft)	+N/-S (usft)	+E/-W (usft)	Vertical Section (usft)	Dogleg Rate (°/100usft)	Build Rate (°/100usft)	Turn Rate (°/100usft)
2,450.0	13.00	70.00	2,436.7	48.2	132.4	136.3	0.00	0.00	0.00
2,500.0	13.00	70.00	2,485.5	52.0	143.0	147.1	0.00	0.00	0.00
2,550.0	13.00	70.00	2,534.2	55.9	153.6	158.0	0.00	0.00	0.00
2,600.0	13.00	70.00	2,582.9	59.7	164.1	168.9	0.00	0.00	0.00
2,650.0	13.00	70.00	2,631.6	63.6	174.7	179.8	0.00	0.00	0.00
2,700.0	13.00	70.00	2,680.3	67.4	185.3	190.6	0.00	0.00	0.00
2,750.0	13.00	70.00	2,729.1	71.3	195.8	201.5	0.00	0.00	0.00
2,800.0	13.00	70.00	2,777.8	75.1	206.4	212.4	0.00	0.00	0.00
2,850.0	13.00	70.00	2,826.5	79.0	217.0	223.3	0.00	0.00	0.00
2,900.0	13.00	70.00	2,875.2	82.8	227.5	234.2	0.00	0.00	0.00
2,950.0	13.00	70.00	2,923.9	86.7	238.1	245.0	0.00	0.00	0.00
3,000.0	13.00	70.00	2,972.7	90.5	248.7	255.9	0.00	0.00	0.00
3,050.0	13.00	70.00	3,021.4	94.4	259.2	266.8	0.00	0.00	0.00
3,100.0	13.00	70.00	3,070.1	98.2	269.8	277.7	0.00	0.00	0.00
3,150.0	13.00	70.00	3,118.8	102.1	280.4	288.5	0.00	0.00	0.00
3,200.0	13.00	70.00	3,167.5	105.9	291.0	299.4	0.00	0.00	0.00
3,250.0	13.00	70.00	3,216.2	109.7	301.5	310.3	0.00	0.00	0.00
3,286.7	13.00	70.00	3,252.0	112.6	309.3	318.3	0.00	0.00	0.00
PARKMAN									
3,300.0	13.00	70.00	3,265.0	113.6	312.1	321.2	0.00	0.00	0.00
3,350.0	13.00	70.00	3,313.7	117.4	322.7	332.0	0.00	0.00	0.00
3,400.0	13.00	70.00	3,362.4	121.3	333.2	342.9	0.00	0.00	0.00
3,450.0	13.00	70.00	3,411.1	125.1	343.8	353.8	0.00	0.00	0.00
3,500.0	13.00	70.00	3,459.8	129.0	354.4	364.7	0.00	0.00	0.00
3,550.0	13.00	70.00	3,508.6	132.8	364.9	375.5	0.00	0.00	0.00
3,600.0	13.00	70.00	3,557.3	136.7	375.5	386.4	0.00	0.00	0.00
3,650.0	13.00	70.00	3,606.0	140.5	386.1	397.3	0.00	0.00	0.00
3,700.0	13.00	70.00	3,654.7	144.4	396.6	408.2	0.00	0.00	0.00
3,750.0	13.00	70.00	3,703.4	148.2	407.2	419.1	0.00	0.00	0.00
3,800.0	13.00	70.00	3,752.1	152.1	417.8	429.9	0.00	0.00	0.00
3,850.0	13.00	70.00	3,800.9	155.9	428.4	440.8	0.00	0.00	0.00
3,900.0	13.00	70.00	3,849.6	159.8	438.9	451.7	0.00	0.00	0.00
3,930.2	13.00	70.00	3,879.0	162.1	445.3	458.3	0.00	0.00	0.00
SUSSEX									
3,950.0	13.00	70.00	3,898.3	163.6	449.5	462.6	0.00	0.00	0.00
4,000.0	13.00	70.00	3,947.0	167.4	460.1	473.4	0.00	0.00	0.00
4,050.0	13.00	70.00	3,995.7	171.3	470.6	484.3	0.00	0.00	0.00
4,100.0	13.00	70.00	4,044.5	175.1	481.2	495.2	0.00	0.00	0.00
4,150.0	13.00	70.00	4,093.2	179.0	491.8	506.1	0.00	0.00	0.00
4,200.0	13.00	70.00	4,141.9	182.8	502.3	516.9	0.00	0.00	0.00
4,250.0	13.00	70.00	4,190.6	186.7	512.9	527.8	0.00	0.00	0.00
4,300.0	13.00	70.00	4,239.3	190.5	523.5	538.7	0.00	0.00	0.00
4,350.0	13.00	70.00	4,288.1	194.4	534.0	549.6	0.00	0.00	0.00
4,378.7	13.00	70.00	4,316.0	196.6	540.1	555.8	0.00	0.00	0.00
SHANNON									
4,400.0	13.00	70.00	4,336.8	198.2	544.6	560.4	0.00	0.00	0.00
4,450.0	13.00	70.00	4,385.5	202.1	555.2	571.3	0.00	0.00	0.00
4,500.0	13.00	70.00	4,434.2	205.9	565.8	582.2	0.00	0.00	0.00
4,550.0	13.00	70.00	4,482.9	209.8	576.3	593.1	0.00	0.00	0.00
4,600.0	13.00	70.00	4,531.6	213.6	586.9	604.0	0.00	0.00	0.00
4,650.0	13.00	70.00	4,580.4	217.5	597.5	614.8	0.00	0.00	0.00
4,700.0	13.00	70.00	4,629.1	221.3	608.0	625.7	0.00	0.00	0.00
4,750.0	13.00	70.00	4,677.8	225.2	618.6	636.6	0.00	0.00	0.00

Noble Energy Inc

Planning Report

Database:	EDM Production	Local Co-ordinate Reference:	Well Rohn State LD10-67HN
Company:	Northern Region Drilling	TVD Reference:	WELL @ 4760.0usft (Original Well Elev)
Project:	Wattenberg Field	MD Reference:	WELL @ 4760.0usft (Original Well Elev)
Site:	LD (09N-58W)	North Reference:	Grid
Well:	Rohn State LD10-67HN	Survey Calculation Method:	Minimum Curvature
Wellbore:	Original Drilling		
Design:	APD - Rev 0		

Planned Survey									
Measured Depth (usft)	Inclination (°)	Azimuth (°)	Vertical Depth (usft)	+N/-S (usft)	+E/-W (usft)	Vertical Section (usft)	Dogleg Rate (°/100usft)	Build Rate (°/100usft)	Turn Rate (°/100usft)
4,800.0	13.00	70.00	4,726.5	229.0	629.2	647.5	0.00	0.00	0.00
4,850.0	13.00	70.00	4,775.2	232.8	639.7	658.3	0.00	0.00	0.00
4,900.0	13.00	70.00	4,824.0	236.7	650.3	669.2	0.00	0.00	0.00
4,950.0	13.00	70.00	4,872.7	240.5	660.9	680.1	0.00	0.00	0.00
4,959.6	13.00	70.00	4,882.0	241.3	662.9	682.2	0.00	0.00	0.00
TEEPEE BUTTES									
5,000.0	13.00	70.00	4,921.4	244.4	671.4	691.0	0.00	0.00	0.00
5,050.0	13.00	70.00	4,970.1	248.2	682.0	701.8	0.00	0.00	0.00
5,055.0	13.00	70.00	4,975.0	248.6	683.1	702.9	0.00	0.00	0.00
Start DLS 7.00 TFO 9.06									
5,100.0	16.12	71.79	5,018.5	252.3	693.8	713.9	7.00	6.93	3.97
5,150.0	19.59	73.12	5,066.1	256.9	708.4	728.9	7.00	6.95	2.66
5,200.0	23.08	74.06	5,112.7	262.0	725.8	746.7	7.00	6.97	1.89
5,250.0	26.56	74.77	5,158.1	267.7	746.0	767.4	7.00	6.97	1.41
5,300.0	30.05	75.32	5,202.1	273.8	769.0	790.8	7.00	6.98	1.11
5,350.0	33.55	75.77	5,244.6	280.3	794.5	816.8	7.00	6.98	0.90
5,378.0	35.50	75.98	5,267.6	284.2	809.8	832.4	7.00	6.99	0.77
Start DLS 5.98 TFO 16.18									
5,400.0	36.77	76.60	5,285.4	287.3	822.5	845.3	5.98	5.75	2.78
5,450.0	39.65	77.86	5,324.7	294.1	852.6	875.9	5.98	5.77	2.53
5,500.0	42.55	78.98	5,362.4	300.7	884.8	908.6	5.98	5.79	2.24
5,550.0	45.45	79.99	5,398.3	307.0	919.0	943.2	5.98	5.81	2.01
5,600.0	48.37	80.89	5,432.5	313.1	955.0	979.6	5.98	5.83	1.81
5,650.0	51.29	81.72	5,464.7	318.9	992.7	1,017.7	5.98	5.84	1.66
5,700.0	54.22	82.49	5,495.0	324.3	1,032.1	1,057.5	5.98	5.85	1.53
5,750.0	57.15	83.20	5,523.2	329.5	1,073.1	1,098.7	5.98	5.86	1.42
5,800.0	60.08	83.86	5,549.2	334.3	1,115.5	1,141.4	5.98	5.87	1.33
5,850.0	63.02	84.48	5,573.0	338.7	1,159.3	1,185.4	5.98	5.88	1.25
5,861.1	63.67	84.62	5,578.0	339.7	1,169.1	1,195.3	5.98	5.88	1.21
SHARON SPRINGS									
5,886.6	65.17	84.92	5,589.0	341.8	1,192.0	1,218.3	5.98	5.88	1.19
NIOBRARA									
5,900.0	65.96	85.08	5,594.5	342.8	1,204.2	1,230.5	5.98	5.88	1.17
5,921.3	67.21	85.32	5,603.0	344.5	1,223.6	1,250.0	5.98	5.88	1.15
NIO A CHALK									
5,950.0	68.90	85.65	5,613.7	346.6	1,250.2	1,276.6	5.98	5.89	1.12
6,000.0	71.85	86.19	5,630.5	349.9	1,297.2	1,323.7	5.98	5.89	1.09
6,008.0	72.32	86.28	5,633.0	350.4	1,304.8	1,331.4	5.98	5.89	1.07
NIO A MARL									
6,050.0	74.79	86.72	5,644.9	352.9	1,345.0	1,371.6	5.98	5.89	1.05
6,100.0	77.74	87.23	5,656.7	355.4	1,393.5	1,420.1	5.98	5.89	1.03
6,150.0	80.69	87.73	5,666.1	357.6	1,442.5	1,469.2	5.98	5.90	1.00
6,200.0	83.64	88.22	5,672.9	359.3	1,492.0	1,518.6	5.98	5.90	0.99
6,223.1	85.00	88.45	5,675.2	360.0	1,515.0	1,541.6	5.98	5.90	0.98
Start 50.0 hold at 6223.1 MD - 7" Casing @ 6223.1' MD									
6,250.0	85.00	88.45	5,677.5	360.7	1,541.8	1,568.3	0.00	0.00	0.00
6,273.1	85.00	88.45	5,679.6	361.3	1,564.8	1,591.3	0.00	0.00	0.00
Start Build 4.00									
6,300.0	86.08	88.45	5,681.7	362.1	1,591.6	1,618.0	4.00	4.00	0.00
6,350.0	88.08	88.45	5,684.2	363.4	1,641.5	1,667.9	4.00	4.00	0.00
6,398.1	90.00	88.45	5,685.0	364.7	1,689.6	1,715.9	4.00	4.00	0.00
6,400.0	90.00	88.45	5,685.0	364.8	1,691.5	1,717.8	0.00	0.00	0.00
6,450.0	90.00	88.45	5,685.0	366.1	1,741.5	1,767.7	0.00	0.00	0.00

Noble Energy Inc

Planning Report

Database:	EDM Production	Local Co-ordinate Reference:	Well Rohn State LD10-67HN
Company:	Northern Region Drilling	TVD Reference:	WELL @ 4760.0usft (Original Well Elev)
Project:	Wattenberg Field	MD Reference:	WELL @ 4760.0usft (Original Well Elev)
Site:	LD (09N-58W)	North Reference:	Grid
Well:	Rohn State LD10-67HN	Survey Calculation Method:	Minimum Curvature
Wellbore:	Original Drilling		
Design:	APD - Rev 0		

Planned Survey									
Measured Depth (usft)	Inclination (°)	Azimuth (°)	Vertical Depth (usft)	+N/-S (usft)	+E/-W (usft)	Vertical Section (usft)	Dogleg Rate (°/100usft)	Build Rate (°/100usft)	Turn Rate (°/100usft)
6,500.0	90.00	88.45	5,685.0	367.5	1,791.5	1,817.5	0.00	0.00	0.00
6,550.0	90.00	88.45	5,685.0	368.8	1,841.4	1,867.4	0.00	0.00	0.00
6,600.0	90.00	88.45	5,685.0	370.2	1,891.4	1,917.3	0.00	0.00	0.00
6,650.0	90.00	88.45	5,685.0	371.5	1,941.4	1,967.2	0.00	0.00	0.00
6,700.0	90.00	88.45	5,685.0	372.9	1,991.4	2,017.1	0.00	0.00	0.00
6,750.0	90.00	88.45	5,685.0	374.2	2,041.4	2,067.0	0.00	0.00	0.00
6,800.0	90.00	88.45	5,685.0	375.6	2,091.3	2,116.9	0.00	0.00	0.00
6,850.0	90.00	88.45	5,685.0	376.9	2,141.3	2,166.8	0.00	0.00	0.00
6,900.0	90.00	88.45	5,685.0	378.3	2,191.3	2,216.7	0.00	0.00	0.00
6,950.0	90.00	88.45	5,685.0	379.7	2,241.3	2,266.6	0.00	0.00	0.00
7,000.0	90.00	88.45	5,685.0	381.0	2,291.3	2,316.5	0.00	0.00	0.00
7,050.0	90.00	88.45	5,685.0	382.4	2,341.3	2,366.4	0.00	0.00	0.00
7,100.0	90.00	88.45	5,685.0	383.7	2,391.2	2,416.3	0.00	0.00	0.00
7,150.0	90.00	88.45	5,685.0	385.1	2,441.2	2,466.2	0.00	0.00	0.00
7,200.0	90.00	88.45	5,685.0	386.4	2,491.2	2,516.1	0.00	0.00	0.00
7,250.0	90.00	88.45	5,685.0	387.8	2,541.2	2,566.0	0.00	0.00	0.00
7,300.0	90.00	88.45	5,685.0	389.1	2,591.2	2,615.9	0.00	0.00	0.00
7,350.0	90.00	88.45	5,685.0	390.5	2,641.1	2,665.8	0.00	0.00	0.00
7,400.0	90.00	88.45	5,685.0	391.8	2,691.1	2,715.7	0.00	0.00	0.00
7,450.0	90.00	88.45	5,685.0	393.2	2,741.1	2,765.6	0.00	0.00	0.00
7,500.0	90.00	88.45	5,685.0	394.5	2,791.1	2,815.5	0.00	0.00	0.00
7,550.0	90.00	88.45	5,685.0	395.9	2,841.1	2,865.4	0.00	0.00	0.00
7,600.0	90.00	88.45	5,685.0	397.2	2,891.1	2,915.3	0.00	0.00	0.00
7,650.0	90.00	88.45	5,685.0	398.6	2,941.0	2,965.2	0.00	0.00	0.00
7,700.0	90.00	88.45	5,685.0	399.9	2,991.0	3,015.1	0.00	0.00	0.00
7,750.0	90.00	88.45	5,685.0	401.3	3,041.0	3,065.0	0.00	0.00	0.00
7,800.0	90.00	88.45	5,685.0	402.6	3,091.0	3,114.8	0.00	0.00	0.00
7,850.0	90.00	88.45	5,685.0	404.0	3,141.0	3,164.7	0.00	0.00	0.00
7,900.0	90.00	88.45	5,685.0	405.3	3,190.9	3,214.6	0.00	0.00	0.00
7,950.0	90.00	88.45	5,685.0	406.7	3,240.9	3,264.5	0.00	0.00	0.00
8,000.0	90.00	88.45	5,685.0	408.1	3,290.9	3,314.4	0.00	0.00	0.00
8,050.0	90.00	88.45	5,685.0	409.4	3,340.9	3,364.3	0.00	0.00	0.00
8,100.0	90.00	88.45	5,685.0	410.8	3,390.9	3,414.2	0.00	0.00	0.00
8,150.0	90.00	88.45	5,685.0	412.1	3,440.9	3,464.1	0.00	0.00	0.00
8,200.0	90.00	88.45	5,685.0	413.5	3,490.8	3,514.0	0.00	0.00	0.00
8,250.0	90.00	88.45	5,685.0	414.8	3,540.8	3,563.9	0.00	0.00	0.00
8,300.0	90.00	88.45	5,685.0	416.2	3,590.8	3,613.8	0.00	0.00	0.00
8,350.0	90.00	88.45	5,685.0	417.5	3,640.8	3,663.7	0.00	0.00	0.00
8,400.0	90.00	88.45	5,685.0	418.9	3,690.8	3,713.6	0.00	0.00	0.00
8,450.0	90.00	88.45	5,685.0	420.2	3,740.7	3,763.5	0.00	0.00	0.00
8,500.0	90.00	88.45	5,685.0	421.6	3,790.7	3,813.4	0.00	0.00	0.00
8,550.0	90.00	88.45	5,685.0	422.9	3,840.7	3,863.3	0.00	0.00	0.00
8,600.0	90.00	88.45	5,685.0	424.3	3,890.7	3,913.2	0.00	0.00	0.00
8,650.0	90.00	88.45	5,685.0	425.6	3,940.7	3,963.1	0.00	0.00	0.00
8,700.0	90.00	88.45	5,685.0	427.0	3,990.7	4,013.0	0.00	0.00	0.00
8,750.0	90.00	88.45	5,685.0	428.3	4,040.6	4,062.9	0.00	0.00	0.00
8,800.0	90.00	88.45	5,685.0	429.7	4,090.6	4,112.8	0.00	0.00	0.00
8,850.0	90.00	88.45	5,685.0	431.0	4,140.6	4,162.7	0.00	0.00	0.00
8,900.0	90.00	88.45	5,685.0	432.4	4,190.6	4,212.6	0.00	0.00	0.00
8,950.0	90.00	88.45	5,685.0	433.8	4,240.6	4,262.5	0.00	0.00	0.00
9,000.0	90.00	88.45	5,685.0	435.1	4,290.5	4,312.4	0.00	0.00	0.00
9,050.0	90.00	88.45	5,685.0	436.5	4,340.5	4,362.3	0.00	0.00	0.00
9,100.0	90.00	88.45	5,685.0	437.8	4,390.5	4,412.1	0.00	0.00	0.00
9,150.0	90.00	88.45	5,685.0	439.2	4,440.5	4,462.0	0.00	0.00	0.00

Noble Energy Inc

Planning Report

Database:	EDM Production	Local Co-ordinate Reference:	Well Rohn State LD10-67HN
Company:	Northern Region Drilling	TVD Reference:	WELL @ 4760.0usft (Original Well Elev)
Project:	Wattenberg Field	MD Reference:	WELL @ 4760.0usft (Original Well Elev)
Site:	LD (09N-58W)	North Reference:	Grid
Well:	Rohn State LD10-67HN	Survey Calculation Method:	Minimum Curvature
Wellbore:	Original Drilling		
Design:	APD - Rev 0		

Planned Survey										
Measured Depth (usft)	Inclination (°)	Azimuth (°)	Vertical Depth (usft)	+N/-S (usft)	+E/-W (usft)	Vertical Section (usft)	Dogleg Rate (°/100usft)	Build Rate (°/100usft)	Turn Rate (°/100usft)	
9,200.0	90.00	88.45	5,685.0	440.5	4,490.5	4,511.9	0.00	0.00	0.00	
9,250.0	90.00	88.45	5,685.0	441.9	4,540.5	4,561.8	0.00	0.00	0.00	
9,300.0	90.00	88.45	5,685.0	443.2	4,590.4	4,611.7	0.00	0.00	0.00	
9,350.0	90.00	88.45	5,685.0	444.6	4,640.4	4,661.6	0.00	0.00	0.00	
9,400.0	90.00	88.45	5,685.0	445.9	4,690.4	4,711.5	0.00	0.00	0.00	
9,450.0	90.00	88.45	5,685.0	447.3	4,740.4	4,761.4	0.00	0.00	0.00	
9,500.0	90.00	88.45	5,685.0	448.6	4,790.4	4,811.3	0.00	0.00	0.00	
9,550.0	90.00	88.45	5,685.0	450.0	4,840.3	4,861.2	0.00	0.00	0.00	
9,600.0	90.00	88.45	5,685.0	451.3	4,890.3	4,911.1	0.00	0.00	0.00	
9,638.2	90.00	88.45	5,685.0	452.4	4,928.5	4,949.2	0.00	0.00	0.00	
TD at 9638.2 - Rohn State LD10-67HN BHL 1320'FNL, 660'FEL										

Design Targets									
Target Name	Dip Angle (°)	Dip Dir. (°)	TVD (usft)	+N/-S (usft)	+E/-W (usft)	Northing (usft)	Easting (usft)	Latitude	Longitude
- hit/miss target									
- Shape									
Rohn State LD10-67HN	0.00	0.00	5,685.0	452.4	4,928.5	1,527,504.68	3,458,860.08	40.769620	-103.843320
- plan hits target center									
- Point									

Casing Points					
Measured Depth (usft)	Vertical Depth (usft)	Name	Casing Diameter (")	Hole Diameter (")	
6,223.1	5,675.2	7" Casing @ 6223.1' MD	7	8-3/4	

Formations						
Measured Depth (usft)	Vertical Depth (usft)	Name	Lithology	Dip (°)	Dip Direction (°)	
2,391.8	2,380.0	PIERRE		0.00		
3,286.7	3,252.0	PARKMAN		0.00		
3,930.2	3,879.0	SUSSEX		0.00		
4,378.7	4,316.0	SHANNON		0.00		
4,959.6	4,882.0	TEEPEE BUTTES		0.00		
5,861.1	5,578.0	SHARON SPRINGS		0.00		
5,886.6	5,589.0	NIOBRARA		0.00		
5,921.3	5,603.0	NIO A CHALK		0.00		
6,008.0	5,633.0	NIO A MARL		0.00		

Noble Energy Inc

Planning Report

Database:	EDM Production	Local Co-ordinate Reference:	Well Rohn State LD10-67HN
Company:	Northern Region Drilling	TVD Reference:	WELL @ 4760.0usft (Original Well Elev)
Project:	Wattenberg Field	MD Reference:	WELL @ 4760.0usft (Original Well Elev)
Site:	LD (09N-58W)	North Reference:	Grid
Well:	Rohn State LD10-67HN	Survey Calculation Method:	Minimum Curvature
Wellbore:	Original Drilling		
Design:	APD - Rev 0		

Plan Annotations				
Measured Depth (usft)	Vertical Depth (usft)	Local Coordinates		Comment
		+N/-S (usft)	+E/-W (usft)	
1,500.0	1,500.0	0.0	0.0	KOP - Start Build 2.00
2,150.0	2,144.4	25.1	69.0	Start 2905.0 hold at 2150.0 MD
5,055.0	4,975.0	248.6	683.1	Start DLS 7.00 TFO 9.06
5,378.0	5,267.6	284.2	809.8	Start DLS 5.98 TFO 16.18
6,223.1	5,675.2	360.0	1,515.0	Start 50.0 hold at 6223.1 MD
6,273.1	5,679.6	361.3	1,564.8	Start Build 4.00
9,638.2	5,685.0	452.4	4,928.5	TD at 9638.2

Northern Region Drilling

Wattenberg Field

LD (09N-58W)

Rohn State LD10-67HN

Original Drilling

APD - Rev 0

Anticollision Summary Report

02 May, 2013

Noble Energy Inc
Anticollision Summary Report

Company:	Northern Region Drilling	Local Co-ordinate Reference:	Well Rohn State LD10-67HN
Project:	Wattenberg Field	TVD Reference:	WELL @ 4760.0usft (Original Well Elev)
Reference Site:	LD (09N-58W)	MD Reference:	WELL @ 4760.0usft (Original Well Elev)
Site Error:	0.0 usft	North Reference:	Grid
Reference Well:	Rohn State LD10-67HN	Survey Calculation Method:	Minimum Curvature
Well Error:	0.0 usft	Output errors are at	2.54 sigma
Reference Wellbore	Original Drilling	Database:	EDM Production
Reference Design:	APD - Rev 0	Offset TVD Reference:	Offset Datum

Reference	APD - Rev 0		
Filter type:	NO GLOBAL FILTER: Using user defined selection & filtering criteria		
Interpolation Method:	Stations	Error Model:	ISCWSA
Depth Range:	Unlimited	Scan Method:	Closest Approach 3D
Results Limited by:	Maximum center-center distance of 10,000.0 usft	Error Surface:	Elliptical Conic
Warning Levels Evaluated at:	2.00 Sigma	Casing Method:	Not applied

Survey Tool Program	Date	5/2/2013		
From (usft)	To (usft)	Survey (Wellbore)	Tool Name	Description
0.0	9,638.2	APD - Rev 0 (Original Drilling)	MWD	MWD - Standard

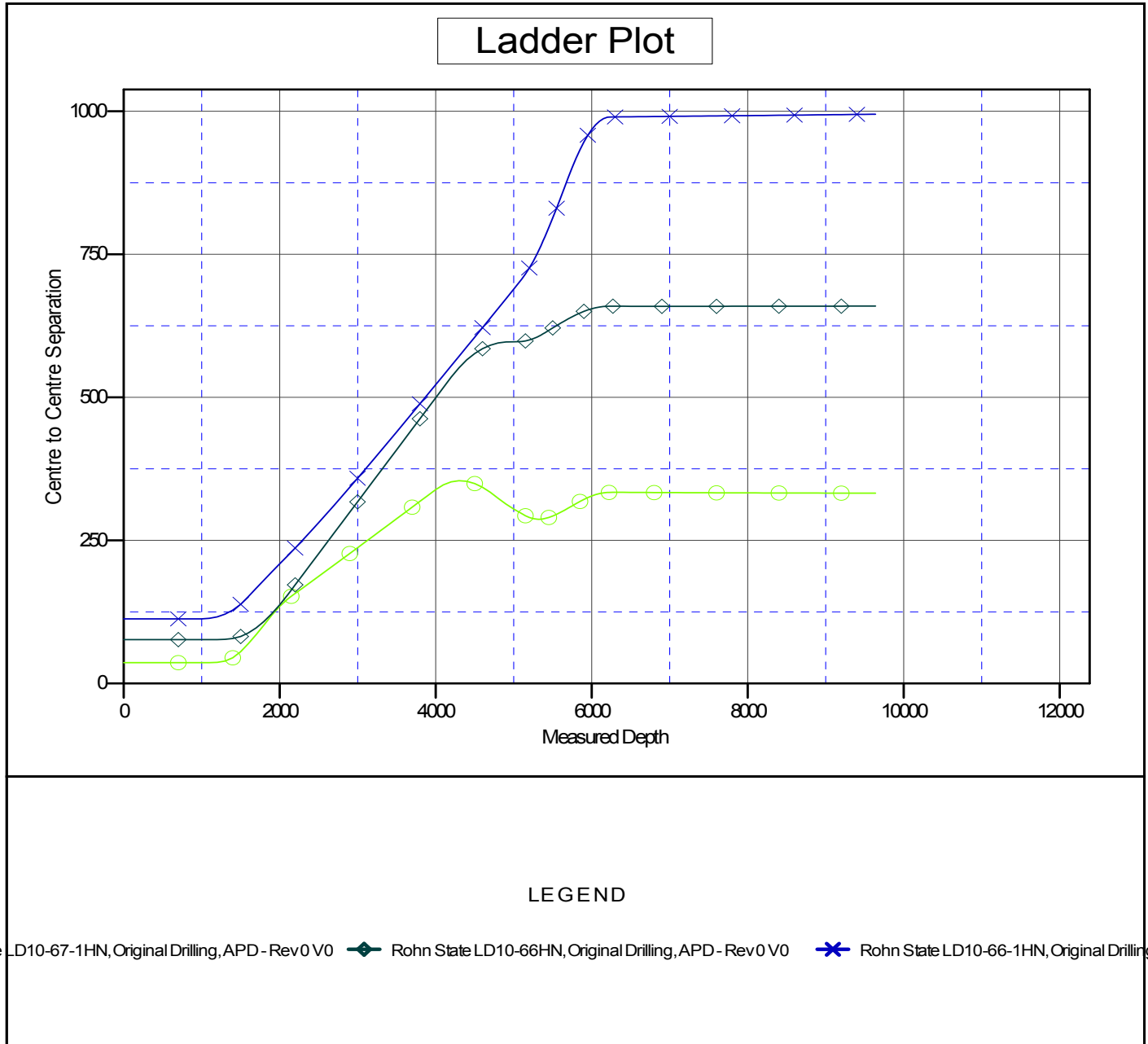
Summary						
Site Name	Reference Measured Depth (usft)	Offset Measured Depth (usft)	Distance Between Centres (usft)	Distance Between Ellipses (usft)	Separation Factor	Warning
Offset Well - Wellbore - Design						
LD (09N-58W)						
Rohn State LD10-66-1HN - Original Drilling - APD - Rev	1,000.0	998.0	112.9	108.7	26.900	CC, ES
Rohn State LD10-66-1HN - Original Drilling - APD - Rev	9,638.2	9,787.4	994.9	739.4	3.895	SF
Rohn State LD10-66HN - Original Drilling - APD - Rev 0	1,200.0	1,199.0	76.5	71.4	15.003	CC, ES
Rohn State LD10-66HN - Original Drilling - APD - Rev 0	9,638.2	9,583.2	659.6	404.9	2.590	SF
Rohn State LD10-67-1HN - Original Drilling - APD - Rev	1,090.1	1,090.1	36.4	31.8	7.920	CC
Rohn State LD10-67-1HN - Original Drilling - APD - Rev	1,200.0	1,199.8	36.8	31.8	7.265	ES
Rohn State LD10-67-1HN - Original Drilling - APD - Rev	9,638.2	9,613.1	332.6	78.7	1.310	Level 3, SF

Noble Energy Inc
Anticollision Summary Report

Company:	Northern Region Drilling	Local Co-ordinate Reference:	Well Rohn State LD10-67HN
Project:	Wattenberg Field	TVD Reference:	WELL @ 4760.0usft (Original Well Elev)
Reference Site:	LD (09N-58W)	MD Reference:	WELL @ 4760.0usft (Original Well Elev)
Site Error:	0.0 usft	North Reference:	Grid
Reference Well:	Rohn State LD10-67HN	Survey Calculation Method:	Minimum Curvature
Well Error:	0.0 usft	Output errors are at	2.54 sigma
Reference Wellbore	Original Drilling	Database:	EDM Production
Reference Design:	APD - Rev 0	Offset TVD Reference:	Offset Datum

Reference Depths are relative to WELL @ 4760.0usft (Original Well Ele)
Offset Depths are relative to Offset Datum
Central Meridian is -105.500000

Coordinates are relative to: Rohn State LD10-67HN
Coordinate System is US State Plane 1983, Colorado Northern Zone
Grid Convergence at Surface is: 1.06°



Noble Energy Inc
Anticollision Summary Report

Company:	Northern Region Drilling	Local Co-ordinate Reference:	Well Rohn State LD10-67HN
Project:	Wattenberg Field	TVD Reference:	WELL @ 4760.0usft (Original Well Elev)
Reference Site:	LD (09N-58W)	MD Reference:	WELL @ 4760.0usft (Original Well Elev)
Site Error:	0.0 usft	North Reference:	Grid
Reference Well:	Rohn State LD10-67HN	Survey Calculation Method:	Minimum Curvature
Well Error:	0.0 usft	Output errors are at	2.54 sigma
Reference Wellbore	Original Drilling	Database:	EDM Production
Reference Design:	APD - Rev 0	Offset TVD Reference:	Offset Datum

Reference Depths are relative to WELL @ 4760.0usft (Original Well Ele
Offset Depths are relative to Offset Datum
Central Meridian is -105.500000

Coordinates are relative to: Rohn State LD10-67HN
Coordinate System is US State Plane 1983, Colorado Northern Zone
Grid Convergence at Surface is: 1.06°

