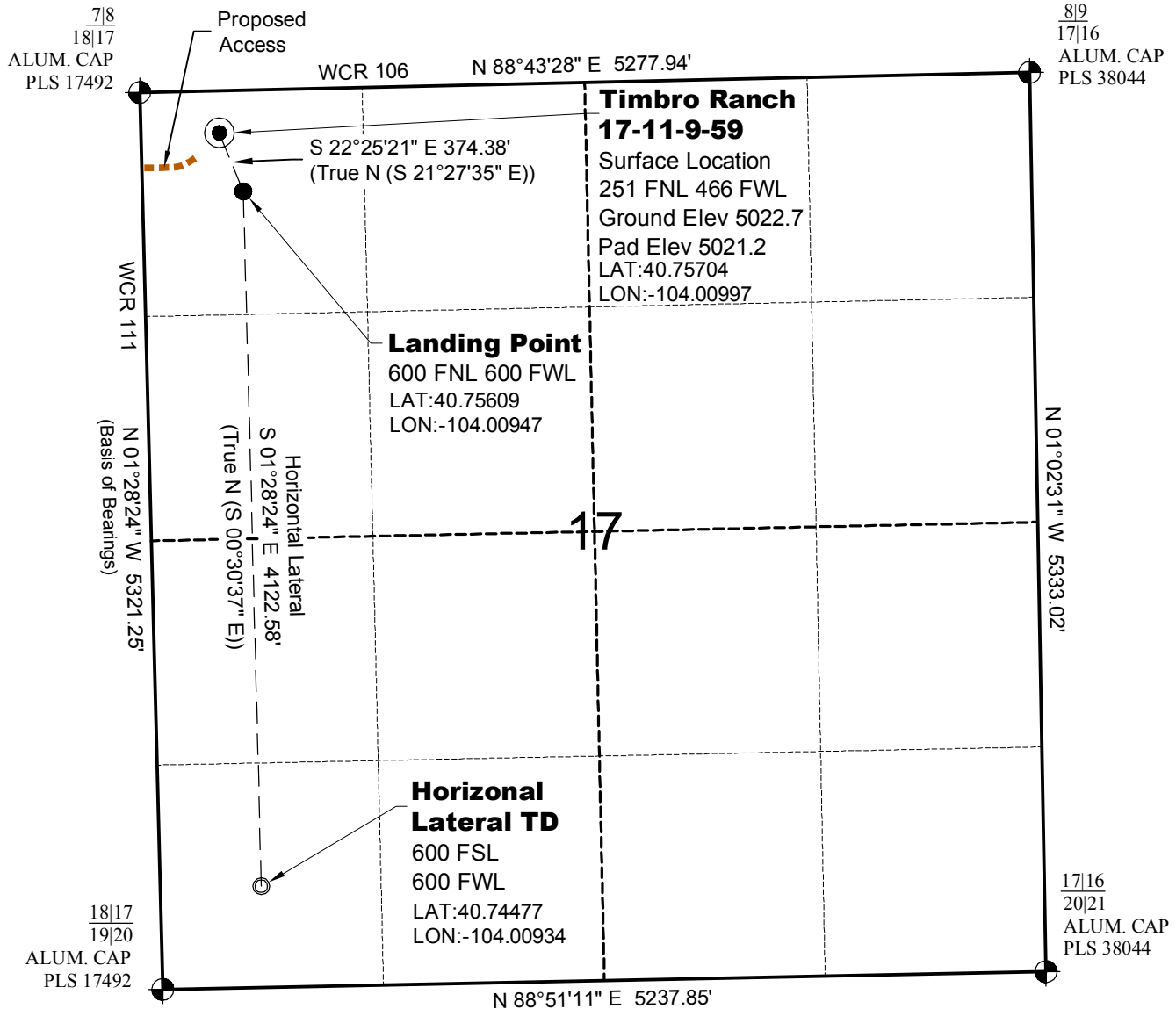


WELL LOCATION MAP

TIMBRO RANCH
17-11-9-59 PAD

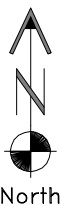


SURVEYOR'S STATEMENT

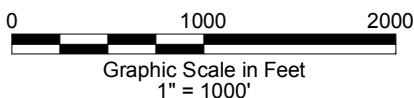
The undersigned hereby states that the well location shown hereon was staked on the ground based on existing monumentation and/or physical evidence found in the field and is correct to the best of my knowledge, information and belief.

NOTES

- 1.) Horizontal coordinates based on NGS control point "SNOW" and vertical datum based on NGS control point "G 209" with an elevation of 4955.32. NAVD 1988.
 - 2.) All directions, distances, and dimensions shown hereon are based on coordinates from the "Colorado coordinate system of 1983 north zone" (article 52 of title 38, C.R.S.).
 - 3.) All section line dimensions shown hereon are based on field measurements of existing monuments and/or physical evidence found in the field unless otherwise indicated. Refer to land survey plats deposited in Weld County.
 - 4.) Physical features shown hereon are for graphical representation only.
 - 5.) See Form 2A for visible improvements within 400' of wellhead.
 - 6.) Distances to nearest section lines are measured perpendicularly.
 - 7.) This is not a land survey nor land survey plat.
 - 8.) Date of Survey 5/11/11; Date of Drawing 5/29/13. REV 2
- PDOP Reading: 1.5 Instrument Operator: George Allen



North



CARRIZO OIL & GAS, INC.
TIMBRO RANCH 17-11-9-59

SL NW1/4 NW1/4 SEC.17 T9N R59W
HL TD SW1/4 SW1/4 SEC.17 T9N R59W
6th PM WELD COUNTY COLORADO