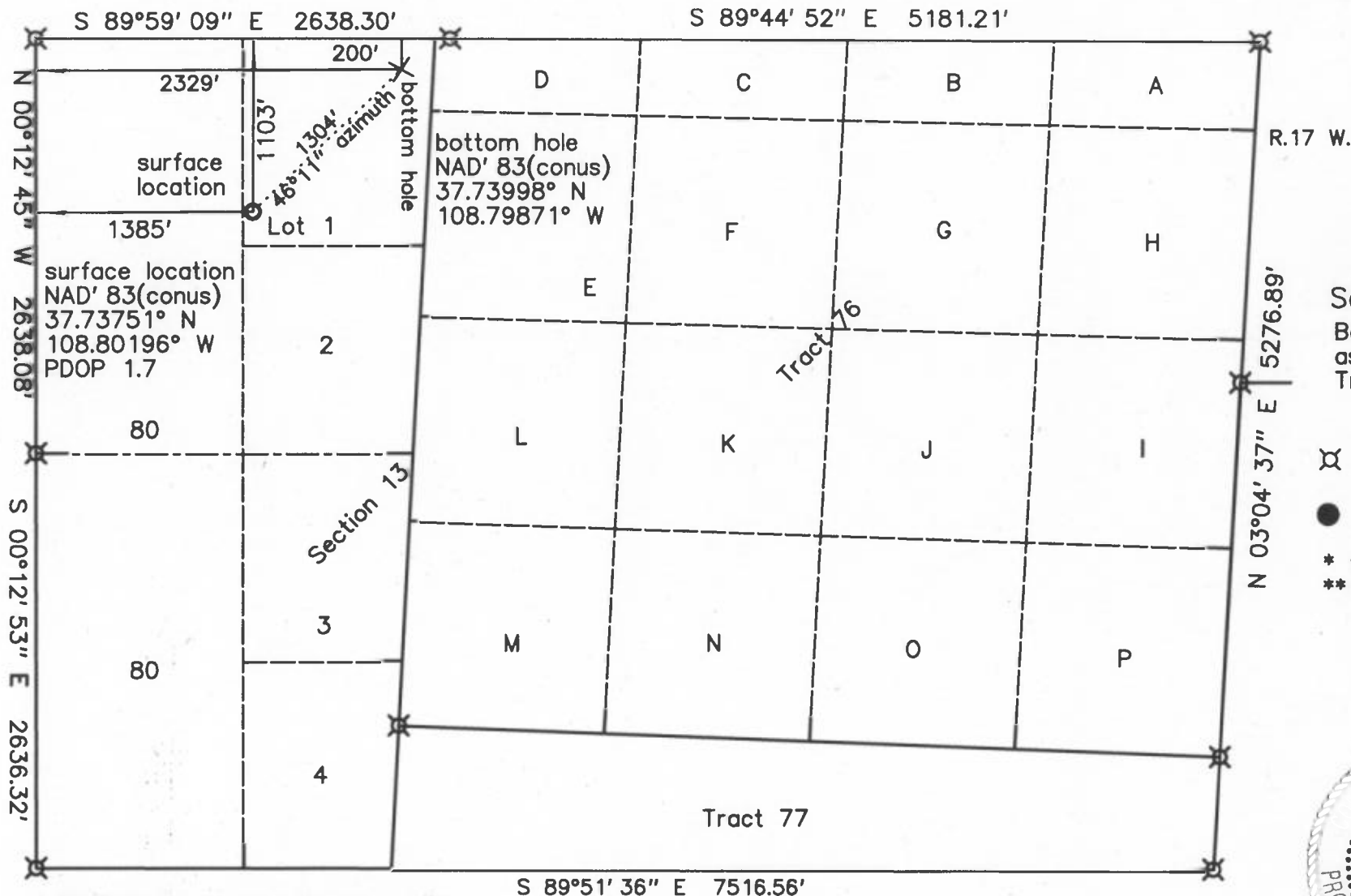


Well Location Plat



Scale: 1" = 1000'  
Basis of bearing is assumed from GPS True North, as shown.

- ✕ standard GLO/BLM monument
- set standard monument
- \* from GLO/BLM
- \*\* calculated



KINDER MORGAN CO2 COMPANY, LP  
Doe Canyon # 18  
1103' FNL & 1385' FWL — surface location  
7282.1' grd.el. NAVD '83 from OPUS  
200' FNL & 2329' FWL — bottom hole  
Section 13, T.40 N., R.18 W., NMPM  
Dolores County, CO

date of survey : 03/22/2013  
date of plat : 03/27/2013  
rev: 03/30/2013 & 5/11/2013

Notes:

- 1) Distances/dimensions are perpendicular to section/aliquot lines.
- 2) Surface use is Fee, dryland crop.
- 3) GPS was corrected by OPUS, instrument operator was R.J. Caffey, CO LS 36562.
- 4) There are no improvements within 500 feet of well bore.

KNOW ALL MEN BY THESE PRESENTS that I, GERALD G. HUDDLESTON, do hereby certify that this plat was prepared from field notes of an actual survey made by me or under my supervision and that the same is true and accurate to the best of my knowledge and belief.