



COMPLIANCE / ENGINEERING / REMEDIATION

LT Environmental, Inc.

4600 West 60th Avenue
Arvada, Colorado 80003
T 303.433.9788 / F 303.433.1432

April 12, 2013

Mr. Todd Cullum
Base Construction Foreman
Noble Energy, Inc.
2115 117th Avenue
Greeley, Colorado 80634

Mr. Jacob Evans
Senior Environmental Specialist
Noble Energy, Inc.
1625 Broadway, Suite 2200
Denver, Colorado 80202

**RE: First Quarter 2013 Remediation and Monitoring Summary Report
Chesnut G 22-6 Tank Battery
Weld County, Colorado
COGCC Tracking #1984181 & Remediation #4316**

Dear Mr. Cullum and Mr. Evans:

LT Environmental, Inc. (LTE), under the direction of Noble Energy, Inc (Noble), is conducting corrective actions at the Chesnut G 22-6 Tank Battery (Site) located approximately 0.5 miles south of the intersection of County Road (CR) 44 and CR 43 in Weld County, Colorado (Figure 1).

Site assessment results were previously discussed in the *LTE Environmental Site Assessment Results*, dated April 15, 2009. LTE, under the direction of Noble, is continuing groundwater monitoring at the Site to evaluate the previously identified groundwater impact. Phase I of the remediation program, which included source removal, was conducted in December 2008 and summarized in the *LTE Excavation Summary Report*, dated April 2009. LTE, as directed by Noble, has initiated Phase II of the remediation program, which includes an air sparging/soil vapor extraction (AS/SVE) remediation system to mitigate remaining groundwater impact. This report summarizes activities conducted at the Site from January 15, 2013, through April 4, 2013, including operation and maintenance (O&M) of the remediation system, air emissions sampling, and quarterly groundwater monitoring.

Remediation System Description

The AS system is designed to introduce ambient air into the subsurface water column for dissolved hydrocarbon volatilization and to promote aerobic microbial decomposition of petroleum constituents. The SVE system is designed to volatilize petroleum constituents

adsorbed onto soil particles and to remove petroleum vapors released from the groundwater by the AS system. AS and SVE wells are connected to a remediation equipment trailer housing the equipment for the AS/SVE systems (Figures 2 and 3). Additional details of the remediation system were provided in the *LTE Remediation System Installation, Startup, and Groundwater Sampling Results*, dated November 22, 2010.

Remediation System Operations and Maintenance

Remediation system operations (Phase II remediation program) were initiated on August 24, 2010. The remediation system was shutdown on March 1, 2013, for static groundwater monitoring, but was restarted on March 25, 2013, due to the detection of residual groundwater hydrocarbon impact. Table 1 provides a summary of system operations.

O&M activities conducted during the reporting period included:

- Completing routine weekly O&M checks to monitor and adjust system performance;
- Testing and analyzing air emissions;
- Changing the generator oil;
- Changing the generator spark plugs;
- Adjusting generator valve overhead clearances;
- Cleaning the generator crankcase breather;
- Shutdown for static evaluation on March 1, 2013;
- Restart of system on March 25, 2013;
- Replacing faulty generator head; and
- Troubleshooting generator shutdowns.

Soil Vapor Extraction Air Emissions

An air sample was collected in a Tedlar[®] bag from the SVE discharge stack on February 12, 2013. The sample was delivered under strict chain-of-custody (COC) protocol to Origins Laboratory, Inc. (Origins) in Denver, Colorado, for analysis of benzene, toluene, ethylbenzene, and total xylenes (BTEX) and total petroleum hydrocarbons-gasoline range organics (TPH-GRO) by United States Environmental Protection Agency (EPA) Modified Method TO-15. Laboratory analytical results of the air sample collected on February 12, 2013, are summarized in Table 2 and included in Attachment 1.

As of February 12, 2013, approximately 853 pounds of volatile organic compounds (VOCs) have been removed by the SVE system. Air emission calculations through February 12, 2013, are provided in Table 2.

Monitoring Well Replacement

On March 4, 2013, one replacement monitoring well, SB03R, was installed. Replacement well SB03R was installed to ensure compliance with applicable cleanup goals in that area of the site. Drilling was completed by ACI Services of Denver, Colorado, with oversight by LTE. The monitoring well was installed to a depth of 20 feet bgs. The well was constructed with 1-inch PVC with 15 feet of 0.01-inch slot screen. Well completion information is included as Attachment 1.

Soil Sampling

Soil boring, SB03R, was advanced using direct-push methods and sampled using a continuous sampler on March 4, 2013. Field measurements and a soil sample were collected to identify soil impact. The soil sample was submitted for analysis based on the sample interval that exhibited visible soil staining, odor, and where the highest photo-ionization detector (PID) reading was observed above the groundwater saturation zone. The sample was submitted to Summit Scientific of Golden, Colorado, for analysis of total petroleum hydrocarbons (TPH) as gasoline range organics (GRO), benzene, toluene, ethylbenzene, and total xylenes (BTEX) by United States Environmental Protection Agency (EPA) Method 8260B, TPH as diesel range organics (DRO) by EPA Method 8015M.

Groundwater Sampling Procedures

Seventeen groundwater monitoring wells (MW01R, MW02, MW03R, MW04, MW05, MW06, MW07, MW08R, MW09R, MW10, MW11, MW12, MW13, MW15, MW16R, MW17R, and MW23R) were sampled at the Site on March 18, 19, and 22, 2013, to determine the current plume extent. Monitoring well MW26 was dry and thus was not sampled.

Prior to sampling each monitoring well, the depth to groundwater was measured and recorded for calculating purge volumes (Table 4). Each well was purged of three well casing volumes prior to collection of groundwater samples. Groundwater samples were collected from the well points by advancing disposable 3/16-inch diameter polyvinyl chloride (PVC) tubing inside the 1-inch and 2-inch diameter PVC well casings and extending the tubing to below the groundwater table. A peristaltic pump was utilized to collect the groundwater samples prior to placement into laboratory-prepared sample bottles. Groundwater samples were collected in 40-milliliter vials, placed on ice in a cooler, and delivered under strict COC protocol to Origins. Samples were analyzed for BTEX by EPA Method 8260C.

Hydrogeology

During the March 2013 monitoring event, the depths to groundwater ranged from 13.78 feet below top of casing (btoc) in MW01R to 18.68 feet btoc in MW08R (Table 4). The groundwater flow direction was predominantly to the east-northeast with an average hydraulic gradient of approximately 0.035 feet per foot. A relative groundwater elevation map is provided as Figure 4.

Soil Analytical Results

The Colorado Oil and Gas Conservation Commission (COGCC) cleanup standards for BTEX in soil are 0.17 milligrams per kilogram (mg/kg), 85 mg/kg, 100 mg/kg, and 175 mg/kg, respectively. The COGCC standard for TPH in soil is 500 mg/kg.

Soil analytical results indicated soil sample SB03R was compliant with COGCC standards. Soil analytical results are presented in Table 3. The laboratory analytical report, laboratory quality assurance/quality control data, and COC documentation are presented in Attachment 3.

Groundwater Analytical Results

The Colorado Department of Public Health and Environment-Water Quality Control Commission has established Regulation 41-The Basic Standards for Ground Water (WQCC Reg 41) for BTEX at 5.0 micrograms per liter ($\mu\text{g/L}$), 560 $\mu\text{g/L}$, 700 $\mu\text{g/L}$, and 1,400 $\mu\text{g/L}$, respectively. Historical analytical results and analytical results for March 2013 are illustrated on Figure 5 and presented in Table 4. The laboratory analytical report, laboratory quality assurance/quality control data, and COC documentation are presented in Attachment 3.

Seventeen groundwater samples were collected during the March 2013 monitoring event. Groundwater analytical results indicated benzene was detected exceeding the WQCC Reg 41 in monitoring wells MW04, MW15, and MW17R at concentrations of 10.2 $\mu\text{g/L}$, 36.9 $\mu\text{g/L}$, and 51.4 $\mu\text{g/L}$, respectively. Groundwater analytical results indicated total xylenes were detected exceeding Reg 41 in MW17R at a concentration of 1,460 $\mu\text{g/L}$. BTEX compounds were not detected exceeding regulatory standards in the remaining samples.

Summary and Conclusions

Current data suggests a substantial decrease in BTEX since the AS/SVE system began operation with a decrease of approximately 85 percent in the benzene groundwater plume extent, as depicted on Figure 6. However, elevated concentrations of benzene are still present at the Site (Table 4). LTE, under the direction of Noble, will conduct groundwater monitoring in June 2013 to assess remediation system performance. Ongoing AS/SVE system operation and groundwater monitoring will be conducted on a quarterly basis. However, the data indicate that Phase II of the remediation program is nearly complete, with a final phase of static evaluation, and enhancement of natural attenuation processes, if necessary. The final phase of the remediation program will be implemented in the near future.

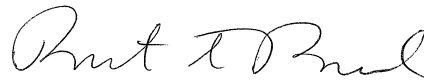
LTE appreciates the opportunity to provide environmental services to Noble. Please call us at 303-433-9788 if you have any questions or comments regarding this report.

Sincerely,

LT ENVIRONMENTAL, INC



Liz Houle, E.I.T.
Staff Engineer



Rob Rebel, P.E.
Project Manager

Attachments:

| | |
|--------------|--|
| Figure 1 | Site Location Map |
| Figure 2 | Air Sparging System Layout |
| Figure 3 | Soil Vapor Extraction System Layout |
| Figure 4 | Relative Groundwater Elevation Map |
| Figure 5 | Groundwater Analytical Results |
| Figure 6 | Benzene Groundwater Analytical Results |
| Table 1 | Remediation System Operations Summary |
| Table 2 | Air Emissions Estimate Summary |
| Table 3 | Soil Analytical Results |
| Table 4 | Groundwater Analytical Results |
| Attachment 1 | Air Emissions Laboratory Analytical Report |
| Attachment 2 | Well Completion Diagram |
| Attachment 3 | Soil and Groundwater Laboratory Analytical Reports |

FIGURES



LEGEND

- | | |
|-------------------------------------|-------------------------------|
| MONITORING WELL | METAL BERM |
| ABANDONED/DESTROYED MONITORING WELL | DIRT BERM |
| METER HOUSE | AST: ABOVEGROUND STORAGE TANK |
| UNDERGROUND UTILITY | ECD: EMISSIONS CONTROL DEVICE |
| AGRICULTURAL FIELD BOUNDARY | |

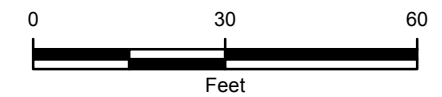
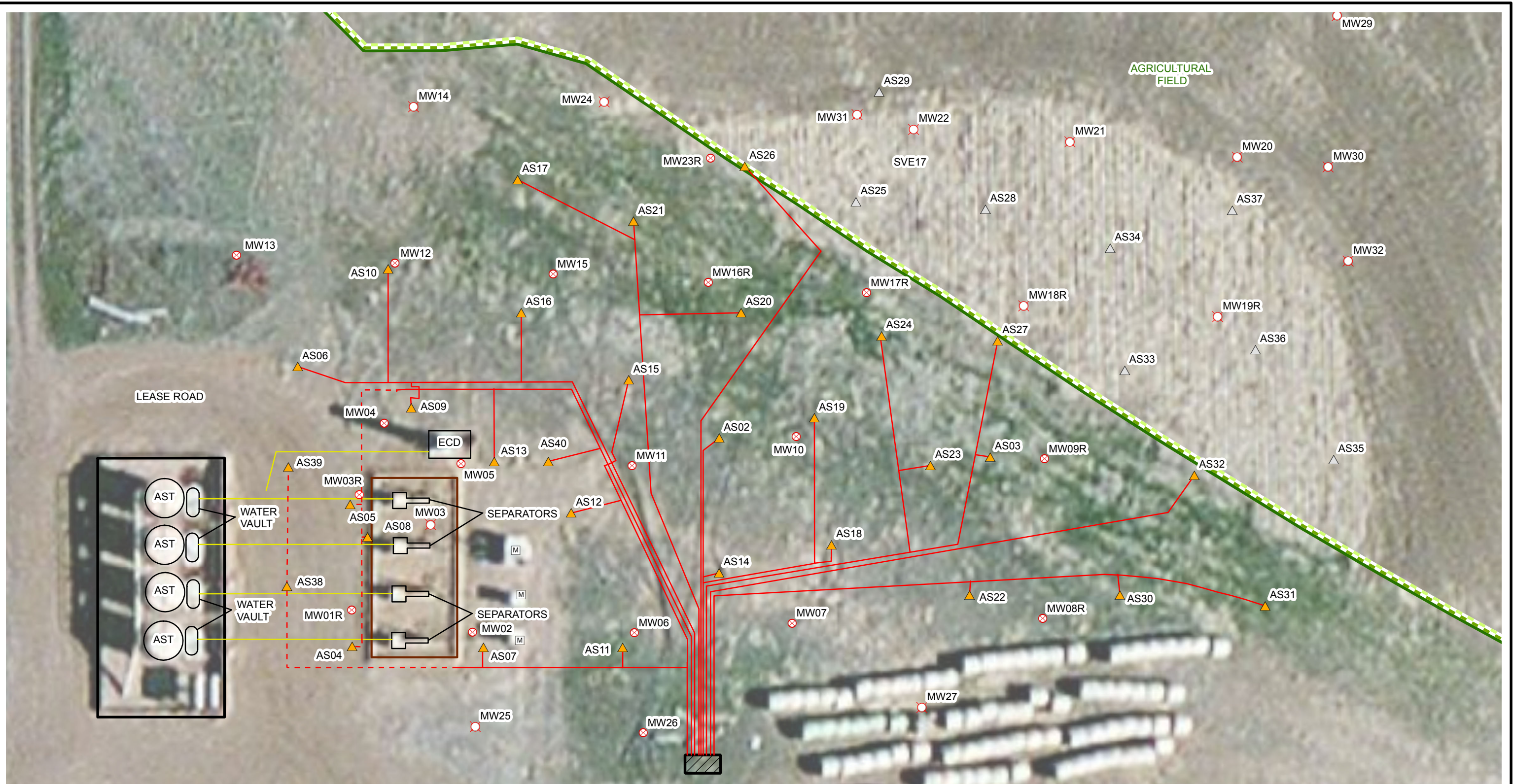


FIGURE 2
SITE MAP
CHESNUT G 22-6 TANK BATTERY
WELD COUNTY, COLORADO

NOBLE ENERGY, INC.





LEGEND

- | | | |
|---------------------------------------|-------------------------------|-------------------------------|
| ▲ EXISTING AIR SPARGING WELL | — ABOVEGROUND PIPING | ▨ REMEDIATION TRAILER |
| △ ABANDONED AIR SPARGING WELL | - - - BURIED PIPING | □ METAL BERM |
| ⊗ MONITORING WELL | — UNDERGROUND UTILITY | □ DIRT BERM |
| ⊗ ABANDONED/DESTROYED MONITORING WELL | — AGRICULTURAL FIELD BOUNDARY | AST: ABOVEGROUND STORAGE TANK |
| Ⓜ METER HOUSE | | ECD: EMISSIONS CONTROL DEVICE |

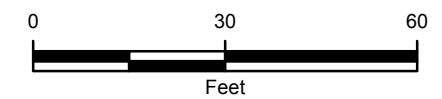














FIGURE 2
AIR SPARGING SYSTEM LAYOUT
CHESNUT G 22-6 TANK BATTERY
WELD COUNTY, COLORADO

NOBLE ENERGY, INC.





LEGEND

- | | | |
|--|---|---|
|  EXISTING SOIL VAPOR EXTRACTION WELL |  ABOVEGROUND PIPING |  REMEDIATION TRAILER |
|  ABANDONED SOIL VAPOR EXTRACTION WELL |  BURIED PIPING |  METAL BERM |
|  MONITORING WELL |  UNDERGROUND UTILITY |  DIRT BERM |
|  ABANDONED/DESTROYED MONITORING WELL |  AGRICULTURAL FIELD BOUNDARY | AST: ABOVEGROUND STORAGE TANK |
|  METER HOUSE | | ECD: EMISSIONS CONTROL DEVICE |

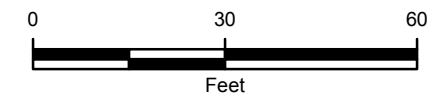


FIGURE 3
SOIL VAPOR EXTRACTION SYSTEM LAYOUT
CHESNUT G 22-6 TANK BATTERY
WELD COUNTY, COLORADO

NOBLE ENERGY, INC.





LEGEND

- | | | |
|--------------------------------------|---|-------------------------------|
| MONITORING WELL | UNDERGROUND UTILITY | METAL BERM |
| ABANDONED/DESTROYED MONITORING WELL | AGRICULTURAL FIELD BOUNDARY | DIRT BERM |
| METER HOUSE | RELATIVE GROUNDWATER ELEVATION CONTOUR IN FEET CONTOUR INTERVAL = 1 FOOT GRADIENT = 0.035 FEET/FOOT NM: NOT MEASURED | AST: ABOVEGROUND STORAGE TANK |
| ESTIMATED GROUNDWATER FLOW DIRECTION | | ECD: EMISSIONS CONTROL DEVICE |

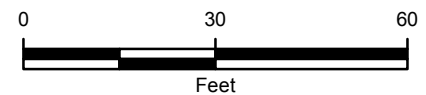
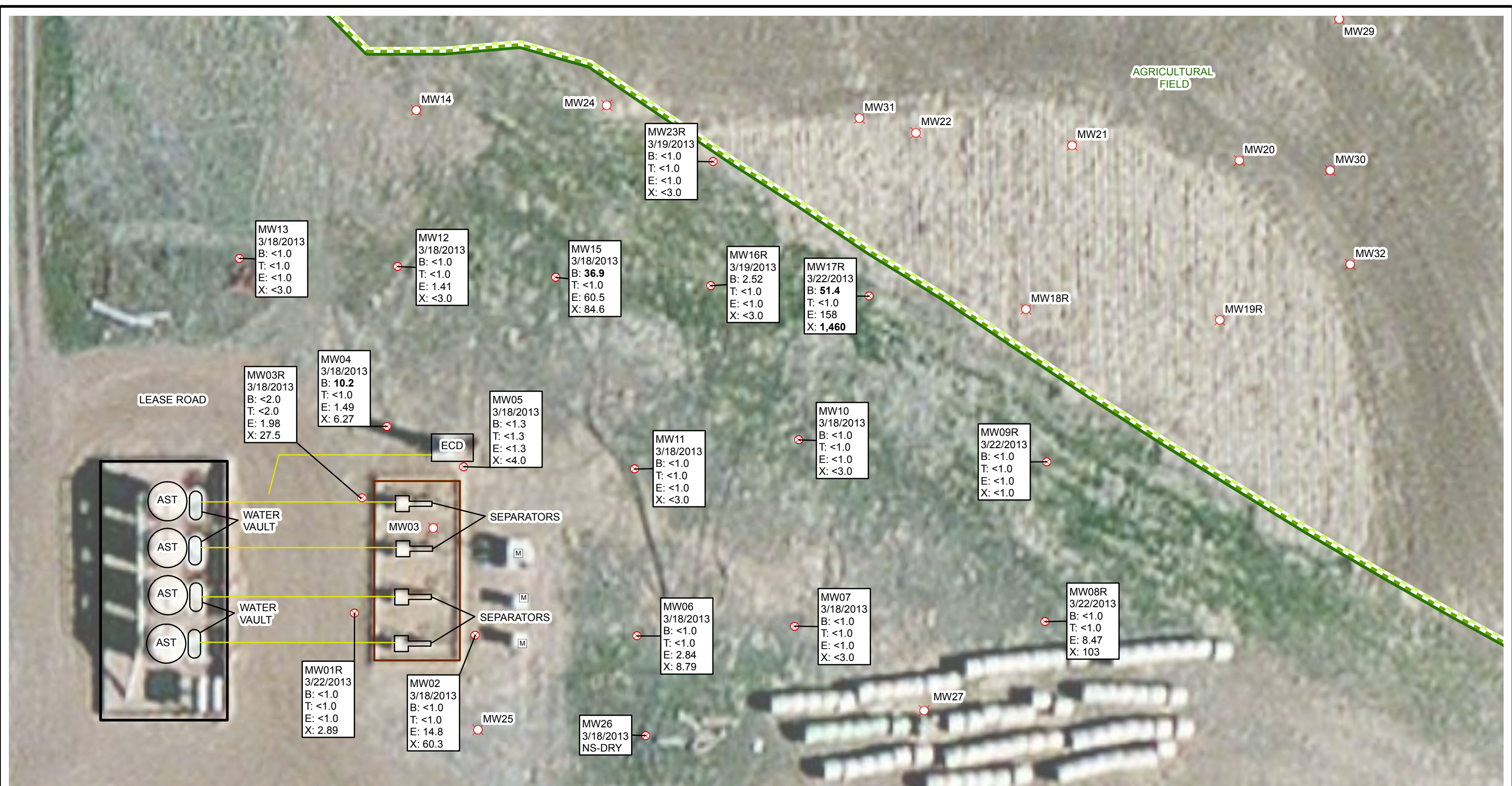


FIGURE 4
RELATIVE GROUNDWATER ELEVATION MAP
MARCH 18, 19, & 22, 2013
CHESNUT G 22-6 TANK BATTERY
WELD COUNTY, COLORADO
NOBLE ENERGY, INC.





LEGEND

⊗ MONITORING WELL

⊗ ABANDONED/DESTROYED MONITORING WELL

M METER HOUSE

— UNDERGROUND UTILITY

— AGRICULTURAL FIELD BOUNDARY

METAL BERM

DIRT BERM

AST: ABOVEGROUND STORAGE TANK

ECD: EMISSIONS CONTROL DEVICE

SAMPLE ID

SAMPLE DATE

B: BENZENE IN MICROGRAMS PER LITER (µg/L)

T: TOLUENE (µg/L)

E: ETHYLBENZENE (µg/L)

X: TOTAL XYLENES (µg/L)

<: LESS THAN LABORATORY METHOD DETECTION LIMIT

BOLD INDICATES RESULT EQUALS OR EXCEEDS COLORADO DEPARTMENT OF PUBLIC HEALTH AND ENVIRONMENT - WATER QUALITY CONTROL COMMISSION REGULATION 41 COVERING BASIC STANDARDS FOR GROUND WATER

NS-DRY: NOT SAMPLED-DRY

0 30 60

Feet

IMAGE COURTESY OF ESRI/BING MAPS

N

FIGURE 5

GROUNDWATER ANALYTICAL RESULTS

MARCH 18, 19, & 22, 2013

CHESNUT G 22-6 TANK BATTERY

WELD COUNTY, COLORADO

NOBLE ENERGY, INC.



LEGEND

- ⊗ MONITORING WELL
- ⊗ ABANDONED/DESTROYED MONITORING WELL
- M METER HOUSE
- UNDERGROUND UTILITY
- AGRICULTURAL FIELD BOUNDARY
- - - 2009 PRE-AS/SVE SYSTEM BENZENE ISOCONCENTRATION CONTOUR (5 µg/L)
- - - DASHED WHERE INFERRED
- MARCH 2013 BENZENE ISOCONCENTRATION CONTOUR (5 µg/L)
- ▭ METAL BERM
- ▭ DIRT BERM

AST: ABOVEGROUND STORAGE TANK
ECD: EMISSIONS CONTROL DEVICE

SAMPLE ID
B: BENZENE IN MICROGRAMS PER LITER (µg/L)
<: LESS THAN LABORATORY METHOD DETECTION LIMIT
BOLD INDICATES RESULT EQUALS OR EXCEEDS COLORADO
DEPARTMENT OF PUBLIC HEALTH AND ENVIRONMENT - WATER
QUALITY CONTROL COMMISSION REGULATION 41 COVERING
BASIC STANDARDS FOR GROUND WATER
NS-DRY: NOT SAMPLED-DRY

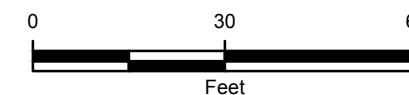


FIGURE 6
BENZENE GROUNDWATER ANALYTICAL RESULTS
MARCH 18, 19, & 22, 2013
CHESNUT G 22-6 TANK BATTERY
WELD COUNTY, COLORADO
NOBLE ENERGY, INC.



TABLES

TABLE 1

REMEDIATION SYSTEM OPERATIONS SUMMARY

**CHESNUT G 22-6 TANK BATTERY
WELD COUNTY, COLORADO
NOBLE ENERGY INC.**

| Date | AS Hours | SVE Hours | Generator Hours | System Status Upon Arrival (On/Off) | Notes |
|------------|-------------|--------------|--------------------|--|--|
| 8/24/2010 | 38.9 | 40.0 | 47.0 | Startup | |
| 9/8/2010 | 396.4 | 397.5 | 404.6 | On | |
| 9/27/2010 | 773.6 | 782.9 | 840.0 | Off | AS high pressure alarm and SVE VFD fault |
| 9/30/2010 | 849.4 | 858.7 | 916.4 | On | |
| 10/21/2010 | 1350.5 | 1359.8 | 1410.1 | On | AS outlet pressure gauge broken |
| 11/10/2010 | 1828.4 | 1837.8 | 1885.6 | On | AS04 flow controls broken |
| 12/1/2010 | 2198.1 | 2231 | 2361.6 | On | |
| 12/2/2010 | 2223.8 | 2256.7 | 2387.4 | On | Troubleshooting pressure problems with AS cycles |
| 12/3/2010 | 2247.0 | 2280.0 | 2410.6 | On | |
| 12/17/2010 | 2582.7 | 2615.7 | 2746.3 | On | |
| 12/20/2010 | 2614.9 | 2647.9 | 2818.3 | Off | |
| 12/30/2010 | 2721.3 | 2879.0 | 3049.5 | Startup | |
| 1/12/2011 | 3012.2 | 3143.5 | 3362.1 | On | |
| 1/17/2011 | 3129.8 | 3217.8 | 3479.7 | On | Repair SVE manifold |
| 1/25/2011 | 3318.8 | 3406.4 | 3664.4 | On | |
| 2/2/2011 | 3511.5 | 3699.1 | 3862 | On | |
| 2/14/2011 | 3529.8 | 3617.4 | 3881.1 | Off | System down since 2/10/2011 due to cold weather |
| 2/18/2011 | 3545.0 | 3712.4 | 3976.2 | On | AS system down due to high pressure alarm |
| 2/25/2011 | 3660.7 | 3879.5 | 4143.3 | On | |
| 3/3/2011 | 3798.7 | 4020.8 | 4284.3 | On | Valve adjustments |
| 3/4/2011 | 3819.5 | 4042.1 | 4305.9 | On | Repair wellheads and apply CLR to problem wells |
| 3/11/2011 | 3988.7 | 4211.3 | 4475.1 | On | |
| 3/18/2011 | 4155.4 | 4377.9 | 4641.4 | On | |
| 3/24/2011 | 4297.4 | 4520.0 | 4783.8 | On | Clean crank case breather; adjust overhead clearances |
| 3/28/2011 | - | - | - | On | Troubleshooting modem |
| 3/31/2011 | 4465.2 | 4687.9 | 4951.7 | On | Change spark plugs |
| 4/7/2011 | 4628.6 | 4851.7 | 5115.5 | On | |
| 4/8/2011 | 4655.0 | 4878.0 | - | On | Grease and oil AS and SVE blowers |
| 4/14/2011 | 476.7 | 5019.7 | 5283.9 | On | Valve adjustments |
| 4/18/2011 | 4919.3 | 5142.3 | 5406.6 | On | |
| 4/26/2011 | 5083.7 | 5306.7 | 5570.4 | On | |
| 4/29/2011 | 5157.9 | 5381.0 | 5645.2 | On | Install new pressure gauges |
| 5/4/2011 | - | - | - | On - SVE Down | SVE system down due to aux #2 alarm |
| 5/6/2011 | - | - | - | On - SVE Down | SVE system down due to aux #2 alarm; troubleshooting SVE |
| 5/9/2011 | - | - | - | Off | Troubleshooting; change spark plugs |
| 5/12/2011 | - | - | - | Off | Troubleshooting |
| 5/17/2011 | - | - | - | Off | Troubleshooting |
| 5/19/2011 | 5321.1 | 5536.6 | 5809.5 | Off | Troubleshooting - anti-seize compound causing spark plugs to short out |
| 5/20/2011 | 5346.1 | 5536.6 | 5834.5 | On - SVE Down | SVE system down due to aux #2 alarm |
| 5/25/2011 | 5360.1 | 5536.6 | 5848.6 | On - SVE Down | SVE system down due to aux #2 alarm |
| 5/27/2011 | 5405.0 | 5536.6 | 5893.8 | On - SVE Down | SVE system down due to aux #2 alarm |
| 6/1/2011 | - | - | - | On - SVE Down | Troubleshooting SVE |
| 6/2/2011 | 5547.6 | 5538.0 | 6037.1 | On - SVE Down | SVE system down due to aux #2 alarm |
| 6/3/2011 | 5549.3 | 5539.7 | 6060.8 | On - SVE Down | Troubleshooting SVE |
| 6/9/2011 | 5689.9 | 5543.7 | 6201.4 | On - SVE Down | SVE system down due to aux #2 alarm |
| 6/21/2011 | - | - | - | On - SVE Down | Fixed SVE shutdowns by replacing PLC card |
| 6/23/2011 | 6023.0 | 5589.4 | 6534.8 | On | |
| 6/28/2011 | 6099.5 | 5666.0 | 6611.4 | Off | High engine temperature alarm |
| 7/1/2011 | 6135.0 | 5702.5 | 6650.0 | Off | High LEL/remote emergency stop alarm |
| 7/6/2011 | 6153.8 | 5792.5 | 6740.2 | On | |
| 7/14/2011 | 6292.9 | 5937.7 | 6885.5 | On | |
| 7/19/2011 | 6372.3 | 6011.1 | 6958.9 | Off | High engine temperature alarm |
| 7/28/2011 | 6462.9 | 6101.8 | 7049.6 | On | |
| 8/3/2011 | - | - | - | Off | High engine temperature alarm |
| 8/5/2011 | - | - | - | Off | Troubleshooting generator |
| 8/8/2011 | - | - | - | Off | Troubleshooting generator |
| 8/12/2011 | - | - | - | Off | Troubleshooting generator |
| 8/16/2011 | - | - | - | Off | Troubleshooting generator |
| 8/17/2011 | 6532.9 | 6172.0 | 7120.3 | Off | Replaced diaphragm in carburetor |
| 8/23/2011 | 6629.8 | 6268.9 | 7217.4 | On | Generator did not restart |
| 8/31/2011 | - | - | 7233.6 | Off | Troubleshooting generator |
| 9/14/2011 | 6646.3 | 6285.6 | 7234.3 | Off | Troubleshooting generator |

TABLE 1

REMEDIATION SYSTEM OPERATIONS SUMMARY

CHESNUT G 22-6 TANK BATTERY
WELD COUNTY, COLORADO
NOBLE ENERGY INC.

| Date | AS Hours | SVE Hours | Generator Hours | System Status Upon Arrival (On/Off) | Notes |
|------------|-------------|--------------|--------------------|--|--|
| 9/27/2011 | 6734.5 | 6374 | 7386 | Off | Troubleshooting generator |
| 10/5/2011 | 6759.5 | 6398.9 | 7450 | Off | High engine temperature alarm |
| 10/10/2011 | 6880.3 | 6519.8 | 7570.9 | On | |
| 10/21/2011 | 7141.1 | 6780.6 | 7831.7 | On | High engine temperature alarm |
| 10/28/2011 | 7217.1 | 6856.8 | 7907.8 | Off | |
| 11/3/2011 | 7357.3 | 6997 | 8048.2 | On | |
| 11/14/2011 | 7523.9 | 7163.7 | 8241.2 | Off | Off to repair leaking gasket found on 11/11/11 |
| 11/18/2011 | 7617.7 | 7257.6 | 8335.1 | On | |
| 11/21/2011 | 7687.5 | 7327.9 | 8405.4 | On | |
| 11/23/2011 | 7712.6 | 7353 | 8451.3 | On | |
| 12/15/2011 | 7723.1 | 7363.7 | 8544.3 | Off | |
| 12/29/2011 | 7724.7 | 7365.3 | 8682.3 | Off | Troubleshooting generator |
| 1/5/2012 | 7729.0 | 7369.3 | 8819.8 | Off | Troubleshooting generator |
| 1/12/2012 | 7898.1 | 7538.5 | 8989.0 | On | Changed oil; adjusted flows |
| 1/18/2012 | 7915.1 | 7555.5 | 9106.9 | Off | |
| 1/24/2012 | 7921.1 | 7561.8 | 9115.0 | Off | |
| 1/26/2012 | 7957.6 | 7598.1 | 9156.7 | Off | |
| 1/30/2012 | 7995.5 | 7636.3 | 9195.4 | Off | |
| 2/10/2012 | 8257.5 | 7898.8 | 9457.9 | On | |
| 2/15/2012 | 8374.7 | 8015.6 | 9574.6 | On | Replaced torn head gasket; adjusted flows |
| 2/22/2012 | - | - | 9666.9 | On | Emptied knockout tank |
| 2/27/2012 | 8663.6 | 8304.1 | 9786.6 | On | Changed alternator belt |
| 3/6/2012 | 8807.4 | 8447.9 | 10007.5 | Off | High engine temperature alarm |
| 3/7/2012 | 8808.3 | 8448.9 | 10008.5 | Off | High engine temperature alarm |
| 3/14/2012 | - | - | - | Off | Removed radiator for cleaning |
| 3/15/2012 | - | - | - | Off | Reinstalled radiator |
| 3/22/2012 | 9049.7 | 8690.3 | 10250.0 | On | Changed oil; changed air filter; adjusted flows |
| 3/27/2012 | 9165.2 | 8805.8 | 10365.5 | On | |
| 4/6/2012 | - | 9048.6 | 10608.2 | On | Changed spark plugs; cleaned crankcase breather; greased SVE; adjusted flows |
| 4/10/2012 | 9500.4 | 9141 | 10700.7 | On | |
| 4/19/2012 | 9719.1 | 9359.8 | 10919.4 | On | Changed oil; greased AS blower |
| 4/23/2012 | - | - | - | | Completed oil reservoir wiring |
| 4/24/2012 | 9814.8 | 9455.6 | 11015.3 | Off | High engine temperature alarm; changed AS oil |
| 4/30/2012 | 9816.2 | 9457 | 11016.5 | Off | |
| 5/8/2012 | 9910.2 | 9551 | 11110.7 | Off | High engine temperature alarm |
| 5/17/2012 | 10125.6 | 9766.5 | 11326.2 | On | Stack sample collected |
| 5/25/2012 | 10241.1 | 9881.9 | 11442.5 | Off | High LEL/remote Emergency stop alarm; changed oil |
| 5/31/2012 | - | - | - | Off | High engine temperature alarm; changed spark plugs; changed SVE oil; cleaned crankcase breather |
| 6/4/2012 | - | - | - | Off | Knockout tank high-level alarm; high engine temperature alarm - set timer |
| 6/5/2012 | - | - | - | Off | High engine temperature alarm |
| 6/12/2012 | - | - | 11562.6 | Off | High engine temperature alarm |
| 6/13/2012 | 10285.0 | 9926 | 11563.2 | Off | High LEL/remote E stop alarm |
| 6/19/2012 | 10286.3 | 9927.3 | 11564.6 | Off | High engine temperature alarm |
| 6/27/2012 | - | - | 11643 | Off | High engine temperature alarm, installed fan |
| 7/2/2012 | 10365.1 | 1006.2 | 11763 | Off | Generator on, AS/SVE down due to tripped breaker |
| 7/10/2012 | 10397.5 | 10038.6 | 11795.8 | Off | High LEL/remote E stop alarm |
| 7/25/2012 | - | - | - | Off | High LEL/remote E stop alarm, troubleshooting |
| 7/27/2012 | 10397.0 | 10039 | 11796 | Off | Troubleshooting generator; recalibrated LEL, changed spark plugs |
| 7/30/2012 | - | - | - | | Removed radiator for cleaning |
| 8/3/2012 | 10430.0 | 10071 | 11829 | Off | |
| 8/6/2012 | 10477.0 | 10119 | 11877.1 | Off | Changed oil, cleaned crankcase, adjusted flows |
| 8/14/2012 | - | - | - | Off | High LEL/remote E stop alarm; left system off |
| 8/20/2012 | 10558.7 | 10200.2 | 11958.9 | Off | Fixed gas leak, stack sample, adjusted flows |
| 8/23/2012 | - | - | - | Off | High LEL/remote E stop alarm |
| 8/27/2012 | 10579.6 | 10247.8 | 12009.5 | Off | High LEL/remote E stop alarm |
| 9/6/2012 | 10644.1 | 10341.2 | 12105.4 | Off | High LEL/remote E stop alarm, changed generator air filter |
| 9/13/2012 | 10686.4 | 10403.5 | 12169.9 | Off | High LEL/remote E stop alarm, changed spark plugs |
| 9/18/2012 | 10743.2 | 10515.2 | 12286.7 | On | Changed oil, cleaned crankcase breather, flows |
| 9/20/2012 | 10767.8 | 10561.8 | - | On | Flows |
| 9/25/2012 | 10783.7 | 10577.8 | 12457.5 | On | Generator on, AS/SVE down due to tripped breaker |
| 9/27/2012 | - | - | - | Off | High LEL/remote E stop alarm; replaced stolen battery |
| 10/1/2012 | - | - | - | Off | High LEL/remote E stop alarm; adjusted EMIT |

TABLE 1

REMEDIATION SYSTEM OPERATIONS SUMMARY

CHESNUT G 22-6 TANK BATTERY
WELD COUNTY, COLORADO
NOBLE ENERGY INC.

| Date | AS Hours | SVE Hours | Generator Hours | System Status Upon Arrival (On/Off) | Notes |
|-----------------------------|----------|-----------|-----------------|-------------------------------------|---|
| 10/2/2012 | 10807.6 | 10601.8 | 12483.1 | On | |
| 10/4/2012 | - | - | - | On | Changed spark plugs, troubleshooting generator |
| 10/10/2012 | - | - | - | Off | Surepoint Group on site to troubleshoot generator; determined on head was bad |
| 10/16/2012 | 10842.0 | 10636.0 | - | Off | Surepoint Group on site to replace bad head |
| 10/18/2012 | - | - | - | On | Changed oil, changed spark plugs, cleaned crankcase breather, unable to restart |
| 10/22/2012 | 10842.9 | 10756.9 | 12653.3 | On | Adjusted flows |
| 10/23/2012 | - | - | - | On | Adjusted flows |
| 11/1/2012 | 11079.2 | 10993.3 | 12890 | On | |
| 11/6/2012 | 11202.9 | 11117.0 | 13013.6 | On | Greased SVE; adjusted flows |
| 11/9/2012 | 11274.2 | 11188.2 | 13084.9 | On | |
| 11/13/2012 | - | - | - | Off | Need new oil cap |
| 11/15/2012 | - | - | - | Off | Replaced oil cap; changed spark plugs |
| 11/19/2012 | 11384.0 | 11298.0 | 13148.6 | Off | Troubleshooting generator wiring; changed oil; cleaned crankcase breather; installed new temperature gauge |
| 11/20/2012 | - | - | - | On | Stack sample |
| 11/26/2012 | - | - | 13195.1 | Off | High temperature alarm |
| 12/4/2012 | - | - | 13435 | On | Adjusted flows |
| 12/6/2012 | - | - | - | On | |
| 12/11/2012 | 11747.2 | 11661.3 | 13558.3 | On | |
| 12/17/2012 | 11856.9 | 11770.3 | 13668.1 | Off | Low oil pressure alarm, high knock-out tank alarm |
| 12/28/2012 | 12116.1 | 12029.5 | 14000.9 | On | Changed oil, cleaned crankcase breather |
| 12/31/2012 | 12189.1 | 12102.4 | 14074.4 | On | |
| 1/3/2013 | - | - | - | On | |
| 1/7/2013 | 12357.0 | 12271.0 | 14169 | On | |
| 1/10/2013 | - | - | 14218.6 | Off | High engine temperature alarm; changed spark plugs; cleaned crankcase breather; |
| 1/14/2013 | 12500.7 | 12414.2 | 14312.7 | On | |
| 1/18/2013 | 12549.2 | 12462.7 | 14361.2 | Off | High engine temperature; replaced spark plugs; changed generator oil and adjusted overhead valve clearances; cleaned crankcase breather; adjusted flows |
| 1/22/2013 | 12550 | 12463.5 | 14362.1 | Off | High engine temperature |
| 1/30/2013 | - | - | - | Off | Dead battery |
| 2/6/2013 | 12600 | 12515 | 14413 | Off | Troubleshoot thermostat |
| 2/8/2013 | 12646 | 12560 | 14459 | On | |
| 2/12/2013 | - | - | - | Off | High engine temperature alarm; repaired wire near oil pressure gauge that wore through casing; replaced AS inlet filter; collected stack sample |
| 2/13/2013 | - | - | 14486.4 | On | |
| 2/19/2013 | 12747.8 | 12661.8 | 14560.9 | Off | High engine temperature alarm; replaced generator air filter; replaced spark plugs; adjusted flows |
| 2/22/2013 | 12818 | 12732 | 14631.3 | On | |
| 2/26/2013 | 12915.2 | 12829.3 | 14728.5 | On | |
| 3/1/2013 | 12985.7 | 12899.8 | 14798.9 | On | |
| 3/25/2013 | - | - | - | Off | Shutdown for static evaluation |
| 3/29/2013 | 13035.1 | 12949.2 | 14848 | Off | Restarted system |
| 4/2/2013 | 13035.8 | 12949.9 | 14849.7 | Off | High engine temperature alarm |
| 4/4/2013 | 13060.7 | 12974.8 | 14874.5 | Off | High engine temperature alarm |
| Operational % Since Startup | 57% | 56% | 65% | | |
| Operational % in Quarter | 28% | 28% | 28% | | |

NOTES:

AS - air sparging

aux - auxiliary

CLR - calcium, lime, rust remover

LEL - lower explosive limit

PLC - programmable logic controller

SVE - soil vapor extraction

VFD - variable frequency drive

- Indicates no reading was collected

% - percent

TABLE 2

AIR EMISSIONS ESTIMATE SUMMARY

CHESNUT G 22-6 TANK BATTERY
WELD COUNTY, COLORADO
NOBLE ENERGY INC.

| Sample Information and Lab Analysis | | | | | | | | |
|-------------------------------------|-----------------|-----------------|----------------|----------------|---------------------|----------------------|-------------|-----------|
| Date | Total Flow (cf) | Delta Flow (cf) | Benzene (µg/L) | Toluene (µg/L) | Ethylbenzene (µg/L) | Total Xylenes (µg/L) | TVPH (µg/L) | PID (ppm) |
| 9/8/2010 | 2,574,000 | 2,574,000 | 0.087 | 0.048 | 0.021 | 0.311 | 7.44 | 4.9 |
| 9/22/2010 | 4,464,000 | 1,890,000 | 0.039 | 0.048 | 0.0074 | 0.098 | 7.7 | 0.6 |
| 10/21/2010 | 10,342,320 | 5,878,320 | 2.0 | 0.015 | 2.7 | 5.4 | 1.2 | 0 |
| 2/25/2011 | 28,484,160 | 18,141,840 | 0.049 | 0.055 | 0.065 | 0.35 | 450 | 93.3 |
| 6/2/2011 | 41,918,010 | 13,433,850 | 0.330 | 0.047 | 0.026 | 1.38 | 370 | 54.1 |
| 8/17/2011 | 46,863,210 | 4,945,200 | 0.0008 | 0.0077 | 0.0011 | 0.0105 | 1.6 | 0.9 |
| 11/14/2011 | 54,003,450 | 7,140,240 | 0.387 | 0.1675 | 0.118 | 0.169 | 10.55 | 1.5 |
| 2/15/2012 | 61,159,410 | 7,155,960 | 0.229 | 1.850 | 0.289 | 2.065 | 3.010 | 8.9 |
| 5/17/2012 | 74,816,430 | 13,657,020 | 0.0068 | 0.055 | 0.0098 | 0.127 | 20.0 | 0 |
| 8/20/2012 | 78,199,290 | 3,382,860 | 0.120 | 0.109 | 0.0461 | 0.159 | 14.800 | 1.2 |
| 11/20/2012 | 83,909,610 | 5,710,320 | 0.00577 | 0.0117 | 0.0082 | 0.04619 | 2.520 | 3.8 |
| 2/12/2013 | 98,783,910 | 14,874,300 | 0.00318 | 0.0193 | 0.00795 | 0.2204 | 4.470 | NM |

| Emission Calculations | | | | | | |
|-----------------------|-----------------|-----------------|-----------------|----------------------|-----------------------|--------------|
| Date | Flow Rate (cfm) | Benzene (lb/hr) | Toluene (lb/hr) | Ethylbenzene (lb/hr) | Total Xylenes (lb/hr) | TVPH (lb/hr) |
| 9/8/2010 | 120 | 0.0000 | 0.0000 | 0.0000 | 0.0001 | 0.0033 |
| 9/22/2010 | 120 | 0.0000 | 0.0000 | 0.0000 | 0.0000 | 0.0035 |
| 10/21/2010 | 140 | 0.0010 | 0.0000 | 0.0014 | 0.0028 | 0.0006 |
| 2/25/2011 | 120 | 0.0000 | 0.0000 | 0.0000 | 0.0002 | 0.2020 |
| 6/2/2011 | 135 | 0.0002 | 0.0000 | 0.0000 | 0.0007 | 0.1868 |
| 8/17/2011 | 130 | 0.0000 | 0.0000 | 0.0000 | 0.0000 | 0.0008 |
| 11/14/2011 | 120 | 0.0002 | 0.0001 | 0.0001 | 0.0001 | 0.0047 |
| 2/15/2012 | 140 | 0.0001 | 0.0010 | 0.0002 | 0.0011 | 0.0016 |
| 5/17/2012 | 130 | 0.0000 | 0.0000 | 0.0000 | 0.0001 | 0.0097 |
| 8/20/2012 | 130 | 0.0001 | 0.0001 | 0.0000 | 0.0001 | 0.0072 |
| 11/20/2012 | 120 | 0.0000 | 0.0000 | 0.0000 | 0.0000 | 0.0011 |
| 2/12/2013 | 150 | 0.0000 | 0.0000 | 0.0000 | 0.0001 | 0.0025 |

| Tons Emitted Over Total Operating Time | | | | | | | | |
|--|-------------------------|-------------|---------------|---------------|--------------------|---------------------|------------|-------------|
| Date | Total Operational Hours | Delta Hours | Benzene (lbs) | Toluene (lbs) | Ethylbenzene (lbs) | Total Xylenes (lbs) | TVPH (lbs) | TVPH (tons) |
| 9/8/2010 | 397.5 | 357.5 | 0.01 | 0.01 | 0.00 | 0.05 | 1.19 | 0.00 |
| 9/22/2010 | 660.0 | 262.5 | 0.00 | 0.01 | 0.00 | 0.01 | 0.91 | 0.00 |
| 10/21/2010 | 1,359.8 | 699.8 | 0.73 | 0.01 | 0.99 | 1.98 | 0.44 | 0.00 |
| 2/25/2011 | 3,879.5 | 2,519.7 | 0.05 | 0.06 | 0.07 | 0.40 | 508.89 | 0.25 |
| 6/2/2011 | 5,538.0 | 1,658.5 | 0.28 | 0.04 | 0.02 | 1.16 | 309.84 | 0.15 |
| 8/17/2011 | 6,172.0 | 634.0 | 0.00 | 0.00 | 0.00 | 0.00 | 0.49 | 0.00 |
| 11/14/2011 | 7,163.7 | 991.7 | 0.17 | 0.07 | 0.05 | 0.08 | 4.70 | 0.00 |
| 2/15/2012 | 8,015.6 | 851.9 | 0.10 | 0.83 | 0.13 | 0.92 | 1.34 | 0.00 |
| 5/17/2012 | 9,766.5 | 1,750.9 | 0.01 | 0.05 | 0.01 | 0.11 | 17.03 | 0.01 |
| 8/20/2012 | 10,200.2 | 433.7 | 0.03 | 0.02 | 0.01 | 0.03 | 3.12 | 0.00 |
| 11/20/2012 | 10,993.3 | 793.1 | 0.00 | 0.00 | 0.00 | 0.02 | 0.90 | 0.00 |
| 2/12/2013 | 12,646.0 | 1,652.7 | 0.00 | 0.02 | 0.01 | 0.20 | 4.14 | 0.00 |
| | | Sum | 1.39 | 1.11 | 1.30 | 4.95 | 852.99 | 0.43 |

NOTES:

cf - cubic feet

µg/L - micrograms per liter

TVPH - total volatile petroleum hydrocarbons

PID - photo-ionization detector

ppm - parts per million

cfm - cubic feet per minute

lb/hr - pounds per hour

lbs - pounds

NM - not measured

Italicized values are reported as one half the detection limit for a non-detected result.

TABLE 3**GROUNDWATER ANALYTICAL RESULTS****CHESNUT G 22-6 TANK BATTERY
WELD COUNTY, COLORADO
NOBLE ENERGY, INC.**

| Soil Sample | Date | Benzene (mg/kg) | Toluene (mg/kg) | Ethylbenzene (mg/kg) | Total Xylenes (mg/kg) | GRO (mg/kg) | DRO (mg/kg) | TPH (mg/kg) |
|-----------------------------------|-------------|----------------------------|----------------------------|---------------------------------|----------------------------------|------------------------|------------------------|------------------------|
| SB03R | 3/4/2013 | <0.0050 | <0.0050 | <0.0050 | <0.0050 | 26 | 260 | 286 |
| COGCC Table 910-1 Standard | | 0.17 | 85 | 100 | 175 | -- | -- | 500 |

NOTES:

mg/kg - milligrams per kilogram

GRO - gasoline range organics analyzed by EPA Modified Method 8015

DRO - diesel range organics analyzed by EPA Modified Method 8015

TPH- total petroleum hydrocarbons

TPH is the sum of GRO and DRO

< - indicates result is less than the stated laboratory method reporting limit

COGCC - Colorado Oil and Gas Conservation Commission

Benzene, toluene, ethylbenzene, and total xylenes analyzed by EPA Method 8260B

TABLE 4

GROUNDWATER ANALYTICAL RESULTS

CHESNUT G 22-6 TANK BATTERY
WELD COUNTY, COLORADO
NOBLE ENERGY, INC.

| Well ID | Date | Depth to Water/-<Product> (feet btoc) | Relative Groundwater Elevation (feet) | Benzene (µg/L) | Toluene (µg/L) | Ethylbenzene (µg/L) | Total Xylenes (µg/L) |
|---------|-----------|---------------------------------------|---------------------------------------|-----------------------|----------------|---------------------|----------------------|
| MW01 | 1/13/2009 | 15.11 | NM | 26,400 | 8,320 | 536 | 8,800 |
| | 3/5/2010 | 14.60 | NM | 26,100 | 6,270 | 666 | 11,090 |
| | 9/20/2010 | NM | NM | Could Not Locate Well | | | |
| | 12/2/2010 | 8.68 | 88.25 | 5,600 | 161 | 37.1 | 1,550 |
| | 3/14/2011 | 15.33 | 81.60 | 1,010 | <1.00 | <1.00 | 12.8 |
| | 6/2/2011 | 9.89 | 87.04 | 1,080 | <1.0 | 13.5 | 1,400 |
| | 9/12/2011 | 2.96 | 93.97 | 1,560 | <1.0 | 84.5 | 1,510 |
| | 12/9/2011 | 7.80 | 89.13 | 427 | <1.0 | 34.5 | 945 |
| | 3/22/2012 | 13.50 | 83.43 | <1.0 | 4.17 | <1.0 | <1.0 |
| | 6/8/2012 | 4.56 | 92.37 | 5.8 | <1 | <1 | 19.3 |
| | 9/18/2012 | 4.04 | 92.89 | 7.1 | <1.0 | 3.1 | 100 |
| | 12/3/2012 | 6.53 | 90.40 | <1.0 | <1.0 | <1.0 | <1.0 |
| | 3/22/2013 | 13.78 | 83.15 | <1.0 | <1.0 | <1.0 | 2.89 |
| MW02 | 1/13/2009 | 15.12 | 83.02 | 3,460 | 1,420 | 199 | 6,120 |
| | 3/5/2010 | 15.95 | 82.19 | 857 | 3.61 | 151 | 1,448.61 |
| | 9/20/2010 | 6.00 | 92.14 | 338 | <1.0 | 104 | 2,256.14 |
| | 12/2/2010 | 10.04 | 88.10 | 125 | <1.0 | 147 | 1,590 |
| | 3/14/2011 | 16.40 | 81.74 | 37.4 | <1.00 | 22.0 | 266 |
| | 6/2/2011 | 13.02 | 85.12 | <1.0 | <1.0 | <1.0 | <3.0 |
| | 9/12/2011 | 5.38 | 92.76 | 4.9 | <1.0 | 2.4 | 9.5 |
| | 12/9/2011 | 10.00 | 88.14 | <1.0 | <1.0 | 2.17 | 20.4 |
| | 3/22/2012 | 16.19 | 81.95 | 1 | 2.36 | 9.88 | 47.2 |
| | 6/8/2012 | 7.45 | 90.69 | <1 | <1 | <1 | <1 |
| | 9/18/2012 | 6.97 | 91.17 | <1.0 | <1.0 | <1.0 | 2.1 |
| | 12/3/2012 | 8.49 | 89.65 | <1.0 | <1.0 | <1.0 | <1.0 |
| | 3/18/2013 | 15.99 | 82.15 | <1.0 | <1.0 | 14.8 | 60.3 |
| MW03 | 1/13/2009 | 15.06 | NM | 11,700 | 7,860 | 195 | 5,950 |
| MW03R | 3/18/2013 | 17.72 | NM | <2.0 | <2.0 | 1.98 | 27.5 |
| MW04 | 1/13/2009 | 13.13 | 84.15 | 19,700 | 7,460 | 555 | 9,990 |
| | 3/5/2010 | 15.71 * sheen | 81.57 | Sample not collected | | | |
| | 9/20/2010 | 3.70 | 93.58 | 563 | <10.0 | <10.0 | 6,027 |
| | 12/2/2010 | 9.33 | 87.95 | 664 | 42 | 19.1 | 4,710 |
| | 3/14/2011 | 14.94 | 82.34 | 713 | <10.0 | 113 | 6,510 |
| | 6/2/2011 | 9.10 | 88.18 | 233 | <1.0 | 31.8 | 457 |
| | 9/12/2011 | 3.40 | 93.88 | 23.8 | <1.0 | 6.8 | 124 |
| | 12/9/2011 | 9.60 | 87.68 | 57.2 | <1.0 | 3.62 | 90.3 |
| | 3/22/2012 | 14.21 | 83.07 | 295 | 5.33 | 5.99 | 53.7 |
| | 6/8/2012 | 4.57 | 92.40 | 14.3 | <1 | <1 | 14.4 |
| | 9/18/2012 | 3.32 | 93.96 | 3.5 | <1.0 | 1.3 | 59.0 |
| | 12/3/2012 | 8.80 | 88.48 | <1.0 | <1.0 | <1.0 | <1.0 |
| | 3/18/2013 | 13.83 | 83.45 | 10.2 | <1.0 | 1.49 | 6.27 |
| MW05 | 1/13/2009 | 14.58 | 82.39 | 15,500 | 14,900 | 412 | 6,860 |
| | 3/5/2010 | 16.06 * sheen | 80.91 | Sample not collected | | | |
| | 9/20/2010 | 6.60 | 90.37 | 12,700 | 1,500 | 522 | 8,190 |
| | 12/2/2010 | 10.48 | 86.49 | 14,700 | 185 | 122 | 5,650 |
| | 3/14/2011 | 16.16 | 80.81 | 67.9 | <1.00 | <1.00 | 112 |
| | 6/2/2011 | 13.25 | 83.72 | 143 | <1.0 | <1.0 | 13.0 |
| | 9/12/2011 | 5.96 | 91.01 | 5,050 | 22.5 | 59.1 | 2,680 |
| | 12/9/2011 | 10.70 | 86.27 | 8,790 | 10.6 | <10.0 | 659 |
| | 3/22/2012 | NM | NM | Not Sampled - Dry | | | |
| | 6/8/2012 | 8.36 | 88.61 | 337 | <1 | <1 | 4.4 |
| | 9/18/2012 | 7.68 | 89.29 | 1,249 | 1.1 | 3.8 | 59.3 |
| | 12/3/2012 | 10.08 | 86.89 | <1.0 | <1.0 | <1.0 | <1.0 |
| | 3/18/2013 | 16.25 | 80.72 | <1.3 | <1.3 | <1.3 | <4.0 |
| MW06 | 2/19/2009 | 17.24 | 79.73 | 305 | 15.8 | 167 | 2,476 |
| | 3/5/2010 | 16.47 | 80.87 | 1.27 | <1.0 | 8.77 | 9.60 |
| | 9/20/2010 | 6.95 | 90.39 | <1.0 | <1.0 | 3.51 | 13.0 |
| | 12/2/2010 | 11.01 | 86.33 | <1.0 | <1.0 | 28.8 | 205 |
| | 3/14/2011 | 16.91 | 80.43 | <1.00 | <1.00 | 42.8 | 317 |
| | 6/2/2011 | 14.30 | 83.04 | <1.0 | <1.0 | 2.1 | 4.9 |
| | 9/12/2011 | 6.51 | 90.83 | <1.0 | <1.0 | <1.0 | <3.0 |
| | 12/9/2011 | 10.80 | 86.54 | <1.0 | <1.0 | <1.0 | <3.0 |
| | 3/22/2012 | 17.08 | 80.26 | <1.0 | <1.0 | 1.46 | 4.9 |
| | 6/8/2012 | 9.22 | 88.12 | <1 | <1 | <1 | <1 |
| | 9/18/2012 | 8.21 | 89.13 | <1.0 | <1.0 | <1.0 | <1.0 |
| | 12/3/2012 | 9.50 | 87.84 | <1.0 | <1.0 | <1.0 | <1.0 |
| | 3/18/2013 | 16.70 | 80.64 | <1.0 | <1.0 | 2.84 | 8.79 |

TABLE 4 (CONTINUED)

GROUNDWATER ANALYTICAL RESULTS

CHESNUT G 22-6 TANK BATTERY
WELD COUNTY, COLORADO
NOBLE ENERGY, INC.

| Well ID | Date | Depth to Water/<Product> (feet btoc) | Relative Groundwater Elevation (feet) | Benzene (µg/L) | Toluene (µg/L) | Ethylbenzene (µg/L) | Total Xylenes (µg/L) |
|---------------|-----------|--------------------------------------|---------------------------------------|-----------------------|----------------|---------------------|----------------------|
| MW07 | 2/19/2009 | 19.18 | 75.41 | 3.99 | 7.09 | 64.1 | 288.67 |
| | 3/5/2010 | 15.93 | 78.66 | 5.47 | <1.0 | 4.11 | 55.02 |
| | 9/20/2010 | 7.35 | 87.24 | <1.0 | <1.0 | <1.0 | <3.0 |
| | 12/2/2010 | 10.32 | 84.27 | <1.0 | <1.0 | <1.0 | <1.0 |
| | 3/14/2011 | 16.12 | 78.47 | <1.00 | <1.00 | <1.00 | <3.00 |
| | 6/2/2011 | 14.59 | 80.00 | <1.0 | <1.0 | <1.0 | <3.0 |
| | 9/12/2011 | 6.25 | 88.34 | <1.0 | <1.0 | <1.0 | <3.0 |
| | 12/9/2011 | NM | NM | Could Not Locate Well | | | |
| | 3/22/2012 | 16.42 | 78.17 | <1.0 | <1.0 | <1.0 | <1.0 |
| | 6/8/2012 | 8.65 | 85.94 | <1 | <1 | <1 | <1 |
| | 9/18/2012 | 8.12 | 86.47 | <1.0 | <1.0 | <1.0 | <1.0 |
| | 12/3/2012 | 9.14 | 85.45 | <1.0 | <1.0 | <1.0 | <1.0 |
| | 3/18/2013 | 16.13 | 78.46 | <1.0 | <1.0 | <1.0 | <3.0 |
| MW08 MW08R | 2/19/2009 | 18.03 | NM | 34.3 | 2,000 | 202 | 4,213 |
| | 9/20/2010 | 10.90 | 83.61 | 1.21 | <1.0 | 118 | 657.4 |
| | 12/2/2010 | 12.94 | 81.57 | <1.0 | <1.0 | <1.0 | 119 |
| | 3/14/2011 | 18.61 | 75.90 | <1.00 | <1.00 | <1.00 | 1,070 |
| | 6/2/2011 | 17.80 | 76.71 | <1.0 | <1.0 | 207 | 587 |
| | 9/12/2011 | 9.66 | 84.85 | <1.0 | <1.0 | 44.6 | 241 |
| | 12/9/2011 | 12.67 | 81.84 | <1.0 | <1.0 | 9.99 | 68.6 |
| | 3/22/2012 | 18.67 | 75.84 | <1.0 | 8.37 | 16.3 | 109 |
| | 6/8/2012 | 11.99 | 82.52 | <1 | <1 | 1.7 | 26.1 |
| | 9/18/2012 | 11.34 | 83.17 | <1.0 | <1.0 | 1.5 | 4.5 |
| | 12/3/2012 | 11.88 | 82.63 | <1.0 | <1.0 | 2.65 | 20.2 |
| | 3/22/2013 | 18.68 | 75.83 | <1.0 | <1.0 | 8.47 | 103 |
| MW09 MW09R | 2/19/2009 | 18.96 | NM | 1,250 | 23.0 | 19.0 | 25.28 |
| | 9/20/2010 | 10.75 | 82.99 | 3,350 | <1.0 | 368 | 1,891.7 |
| | 12/2/2010 | 12.79 | 80.95 | 10.2 | <10.0 | 85.2 | 392 |
| | 3/14/2011 | 17.67 | 76.07 | 422 | <1.0 | 200 | 644 |
| | 6/2/2011 | 17.02 | 76.72 | 902 | <1.0 | 303 | 1,490 |
| | 9/12/2011 | 9.57 | 84.17 | 1.1 | <1.0 | 128 | 609 |
| | 12/9/2011 | 12.50 | 81.24 | 1.79 | <1.0 | 13.7 | 28.5 |
| | 3/22/2012 | 17.81 | 75.93 | 1.64 | 8 | 14.5 | 43.4 |
| | 6/8/2012 | 12.34 | 81.40 | <1 | <1 | 5.9 | 8.9 |
| | 9/18/2012 | 11.43 | 82.31 | <1.0 | <1.0 | <1.0 | <1.0 |
| | 12/3/2012 | 12.00 | 81.74 | <1.0 | <1.0 | <1.0 | <1.0 |
| | 3/22/2013 | 17.92 | 75.82 | <1.0 | <1.0 | <1.0 | <1.0 |
| MW10 | 2/19/2009 | 17.34 | 76.83 | 10,300 | 374 | 412 | 2,435 |
| | 3/5/2010 | 16.46 | 77.71 | 9,790 | 581 | 452 | 3,707 |
| | 9/20/2010 | 7.70 | 86.47 | 4,130 | 50.0 | 434 | 4,280 |
| | 12/2/2010 | 10.83 | 83.34 | 1,560 | <10.0 | 33.5 | 1,100 |
| | 3/14/2011 | 12.25 | 81.92 | 1,070 | <1.00 | 12.6 | 476 |
| | 6/2/2011 | 12.35 | 81.82 | <1.0 | <1.0 | <1.0 | <3.0 |
| | 9/12/2011 | 7.01 | 87.16 | 310 | <1.0 | 107 | 250 |
| | 12/9/2011 | 10.62 | 83.55 | 243 | <1.0 | 53.2 | 279 |
| | 3/22/2012 | 16.37 | 77.80 | 30.3 | 1.75 | <1.0 | <1.0 |
| | 6/8/2012 | 9.60 | 84.57 | 18.2 | <1 | <1 | <1 |
| | 9/18/2012 | 8.78 | 85.39 | <1.0 | <1.0 | <1.0 | <1.0 |
| | 12/3/2012 | 10.02 | 84.15 | <1.0 | <1.0 | <1.0 | <1.0 |
| | 3/18/2013 | 16.30 | 77.87 | <1.0 | <1.0 | <1.0 | <3.0 |
| MW11 | 2/19/2009 | 17.67 | 78.49 | 6,130 | 48.5 | 43.4 | 818.6 |
| | 3/5/2010 | 16.38 | 79.78 | 10,500 | <1.0 | 10.1 | 497 |
| | 9/20/2010 | 7.20 | 88.96 | 2,670 | <1.0 | <1.0 | 235.88 |
| | 12/2/2010 | 11.55 | 84.61 | 835 | <10.0 | <10.0 | 57.1 |
| | 3/14/2011 | 16.27 | 79.89 | 180 | <1.00 | <1.00 | <3.00 |
| | 6/2/2011 | 13.82 | 82.34 | <1.0 | <1.0 | <1.0 | <3.0 |
| | 9/12/2011 | 7.11 | 89.05 | <1.0 | <1.0 | <1.0 | <3.0 |
| | 12/9/2011 | 11.31 | 84.85 | <1.0 | <1.0 | <1.0 | <3.0 |
| | 3/22/2012 | 16.85 | 79.31 | <1.0 | 2 | <1.0 | <1.0 |
| | 6/8/2012 | 9.76 | 86.40 | <1 | <1 | <1 | <1 |
| | 9/18/2012 | 8.87 | 87.29 | <1.0 | <1.0 | <1.0 | <1.0 |
| | 12/3/2012 | 10.78 | 85.38 | <1.0 | <1.0 | <1.0 | <1.0 |
| | 3/18/2013 | 16.98 | 79.18 | <1.0 | <1.0 | <1.0 | <3.0 |

TABLE 4 (CONTINUED)

GROUNDWATER ANALYTICAL RESULTS

CHESNUT G 22-6 TANK BATTERY
WELD COUNTY, COLORADO
NOBLE ENERGY, INC.

| Well ID | Date | Depth to Water/<Product> (feet btoc) | Relative Groundwater Elevation (feet) | Benzene (µg/L) | Toluene (µg/L) | Ethylbenzene (µg/L) | Total Xylenes (µg/L) |
|---------------|-----------|--------------------------------------|---------------------------------------|------------------------------|----------------|---------------------|----------------------|
| MW12 | 2/19/2009 | 14.81 | 81.95 | 1,970 | 257 | 138 | 423 |
| | 3/5/2010 | 14.63 | 82.13 | 465 | 24.5 | 42.7 | 199.9 |
| | 9/20/2010 | 4.10 | 92.66 | 9.92 | <1.0 | <1.0 | 171.07 |
| | 12/2/2010 | 13.41 | 83.35 | <1.0 | <1.0 | <1.0 | <1.0 |
| | 3/14/2011 | 14.91 | 81.85 | 2.35 | <1.00 | 13.5 | 250 |
| | 6/2/2011 | 10.42 | 86.34 | <1.0 | <1.0 | <1.0 | <3.0 |
| | 9/12/2011 | 3.47 | 93.29 | 58.7 | <1.0 | <1.0 | 6.4 |
| | 12/9/2011 | 10.35 | 86.41 | <1.0 | <1.0 | <1.0 | <3.0 |
| | 3/22/2012 | 15.25 | 81.51 | <1.0 | 2 | 1.4 | 4.98 |
| | 6/8/2012 | 5.76 | 91.00 | 12.8 | <1 | 3.7 | 13.7 |
| | 9/18/2012 | 4.41 | 92.35 | <1.0 | <1.0 | <1.0 | 1.4 |
| | 12/3/2012 | 10.34 | 86.42 | <1.0 | <1.0 | <1.0 | <1.0 |
| | 3/18/2013 | 15.33 | 81.43 | <1.0 | <1.0 | 1.41 | <3.0 |
| MW13 | 2/19/2009 | 15.13 | 83.32 | <1.0 | <1.0 | <1.0 | <3.0 |
| | 3/5/2010 | 15.11 | 83.34 | <1.0 | <1.0 | <1.0 | <3.0 |
| | 9/20/2010 | 3.80 | 94.65 | <1.0 | <1.0 | <1.0 | <3.0 |
| | 12/2/2010 | 10.60 | 87.85 | <1.0 | <1.0 | <1.0 | <1.0 |
| | 3/14/2011 | 15.21 | 83.24 | <1.00 | <1.00 | <1.00 | <3.00 |
| | 6/2/2011 | 7.41 | 91.04 | <1.0 | <1.0 | <1.0 | <3.0 |
| | 9/12/2011 | 2.94 | 95.51 | <1.0 | <1.0 | <1.0 | <3.0 |
| | 12/9/2011 | 11.04 | 87.41 | <1.0 | <1.0 | <1.0 | <3.0 |
| | 3/22/2012 | 15.73 | 82.72 | <1.0 | 1.87 | <1.0 | <1.0 |
| | 6/8/2012 | 5.01 | 93.44 | <1 | <1 | <1 | <1 |
| | 9/18/2012 | 3.77 | 94.68 | <1.0 | <1.0 | <1.0 | <1.0 |
| | 12/3/2012 | 10.90 | 87.55 | <1.0 | <1.0 | <1.0 | <1.0 |
| | 3/18/2013 | 15.76 | 82.69 | <1.0 | <1.0 | <1.0 | <3.0 |
| MW14 | 2/19/2009 | 14.32 | NM | <1.0 | <1.0 | <1.0 | <3.0 |
| | 3/5/2012 | NM | NM | Destroyed | | | |
| MW15 | 2/19/2009 | 14.95 | 78.55 | 2,490 | 3,380 | 150 | 1,732 |
| | 3/5/2010 | 13.00 | 80.50 | 998 | 1,890 | 141 | 2,026 |
| | 9/20/2010 | 2.80 | 90.70 | 107 | <1.0 | <1.0 | 417.3 |
| | 12/2/2010 | 8.24 | 85.26 | 133 | <1.0 | <1.0 | 470 |
| | 3/14/2011 | 12.96 | 80.54 | 181 | <1.00 | 135 | 1,580 |
| | 6/2/2011 | 7.44 | 86.06 | 35.4 | <1.0 | 15.6 | 308 |
| | 9/12/2011 | 2.44 | 91.06 | 15.2 | <1.0 | 29.1 | 249 |
| | 12/9/2011 | 10.30 | 83.20 | <1.0 | <1.0 | <1.0 | <3.0 |
| | 3/22/2012 | 15.31 | 78.19 | <1.0 | 2.09 | <1.0 | <1.0 |
| | 6/8/2012 | 5.40 | 88.10 | <1 | <1 | <1 | <1 |
| | 9/18/2012 | 6.38 | 87.12 | <1.0 | <1.0 | <1.0 | <1.0 |
| | 12/3/2012 | 10.06 | 83.44 | <1.0 | <1.0 | <1.0 | <1.0 |
| | 3/18/2013 | 13.81 | 79.69 | 36.9 | <1.0 | 60.5 | 84.6 |
| MW16 MW16R | 2/19/2009 | 15.25 | NM | 1,060 | 16.2 | 156 | 37.5 |
| | 3/22/2012 | 15.58 | NM | <1.0 | <1.0 | <1.0 | <1.0 |
| | 6/8/2012 | 8.59 | NM | 1.1 | <1 | 4.2 | <1 |
| | 9/18/2012 | 6.78 | NM | 3.1 | <1.0 | 2.8 | <1.0 |
| | 12/3/2012 | 10.71 | NM | <1.0 | <1.0 | <1.0 | <1.0 |
| MW17 MW17R | 3/19/2013 | 15.91 | NM | 2.52 | <1.0 | <1.0 | <3.0 |
| | 2/19/2009 | 15.93 <15.91> | NM | 3,680 | 9,940 | 775 | 1,075 |
| | 9/20/2010 | 7.92 | 84.99 | <1.0 | <1.0 | 46.1 | 256.31 |
| | 12/2/2010 | 11.10 | 81.81 | 3.10 | <1.0 | 112 | 570 |
| | 3/14/2011 | 15.62 | 77.29 | 9.19 | <1.00 | 52.6 | 470 |
| | 6/2/2011 | 13.53 | 79.38 | 3.4 | <1.0 | 16.5 | 448 |
| | 9/12/2011 | 6.93 | 85.98 | <1.0 | <1.0 | 45.1 | 275 |
| | 12/9/2011 | 11.11 | 81.80 | 9.28 | <1.0 | 141 | 1,090 |
| | 3/22/2012 | 15.89 | 77.02 | 5.4 | 2.59 | 85.3 | 616 |
| | 6/8/2012 | 10.44 | 82.47 | 4.1 | <1 | 117 | 668 |
| | 9/18/2012 | 9.07 | 83.84 | 5.2 | <1.0 | 95.1 | 522 |
| | 12/3/2012 | 10.98 | 81.93 | 24.8 | <1.0 | 97.5 | 684 |
| | 3/22/2013 | 16.16 | 76.75 | 51.4 | <1.0 | 158 | 1,460 |
| MW18 MW18R | 2/19/2009 | 16.22 | NM | 1,410 | 80.9 | 51.0 | 229.6 |
| | 3/14/2011 | 16.25 | 75.85 | <1.00 | <1.00 | <1.00 | <3.00 |
| | 6/2/2011 | 15.24 | 76.86 | <1.0 | <1.0 | <1.0 | <3.0 |
| | 9/12/2011 | 8.76 | 83.34 | <1.0 | <1.0 | <1.0 | <3.0 |
| | 2/28/2012 | NM | NM | Abandoned per COGCC approval | | | |

TABLE 4 (CONTINUED)

GROUNDWATER ANALYTICAL RESULTS

CHESNUT G 22-6 TANK BATTERY
WELD COUNTY, COLORADO
NOBLE ENERGY, INC.

| Well ID | Date | Depth to Water/<Product> (feet btoc) | Relative Groundwater Elevation (feet) | Benzene (µg/L) | Toluene (µg/L) | Ethylbenzene (µg/L) | Total Xylenes (µg/L) |
|-------------------|-----------|--------------------------------------|---------------------------------------|------------------------------|----------------|---------------------|----------------------|
| MW19 MW19R | 2/25/2009 | 16.67 | NM | 329 | <1.0 | 1.45 | 6.65 |
| | 3/14/2011 | 17.44 | 74.27 | <1.00 | <1.00 | <1.00 | <3.00 |
| | 6/2/2011 | 16.96 | 74.75 | <1.0 | <1.0 | <1.0 | <3.0 |
| | 9/12/2011 | 10.61 | 81.10 | <1.0 | <1.0 | <1.0 | <3.0 |
| | 2/28/2012 | NM | NM | Abandoned per COGCC approval | | | |
| MW20 | 2/25/2009 | 17.55 | NM | 2.13 | 2.34 | 16.0 | 3.27 |
| | | | | Destroyed | | | |
| MW21 | 2/25/2009 | 16.87 | NM | 2.00 | <1.0 | <1.0 | 11.9 |
| | | | | Destroyed | | | |
| MW22 | 2/25/2009 | 16.70 | NM | 8.70 | 40.7 | 3.78 | 22.65 |
| | | | | Destroyed | | | |
| MW23 | 2/25/2009 | 15.25 | NM | 32.9 | 5.29 | 9.01 | 38.36 |
| MW23R | 3/22/2012 | 16.20 | NM | <1.0 | 2.33 | <1.0 | <1.0 |
| | 6/8/2012 | 9.38 | NM | <1 | <1 | <1 | <1 |
| | 9/18/2012 | 7.33 | NM | <1.0 | <1.0 | <1.0 | 1.3 |
| | 12/3/2012 | 11.88 | NM | <1.0 | <1.0 | <1.0 | <1.0 |
| | 3/19/2013 | 16.67 | NM | <1.0 | <1.0 | <1.0 | <3.0 |
| MW24 | 2/25/2009 | 14.87 | NM | 1.02 | <1.0 | <1.0 | <3.0 |
| | | | | Destroyed | | | |
| MW25 | 2/25/2009 | 18.20 | NM | <1.0 | <1.0 | <1.0 | 4.01 |
| | 3/5/2010 | 17.46 | NM | <1.0 | <1.0 | <1.0 | <3.0 |
| | | | | Destroyed | | | |
| MW26 | 2/25/2009 | 18.02 | 78.14 | <1.0 | <1.0 | <1.0 | <3.0 |
| | 3/5/2010 | 17.36 | 78.80 | <1.0 | <1.0 | <1.0 | <3.0 |
| | 9/20/2010 | 5.10 | 91.06 | <1.0 | <1.0 | <1.0 | <3.0 |
| | 12/2/2010 | 8.78 | 87.38 | <1.0 | <1.0 | <1.0 | <1.0 |
| | 3/14/2011 | 15.63 | 80.53 | <1.00 | <1.00 | <1.00 | <3.00 |
| | 6/2/2011 | 11.67 | 84.49 | <1.0 | <1.0 | <1.0 | <3.0 |
| | 9/12/2011 | 4.02 | 92.14 | <1.0 | <1.0 | <1.0 | <3.0 |
| | 12/9/2011 | NM | NM | <1.0 | <1.0 | <1.0 | <3.0 |
| | 3/22/2012 | NM | NM | Not Sampled - Dry | | | |
| | 6/8/2012 | 5.99 | 90.17 | <1 | <1 | <1 | <1 |
| | 9/18/2012 | 5.69 | 90.47 | <1.0 | <1.0 | <1.0 | <1.0 |
| | 12/3/2012 | 7.26 | 88.90 | <1.0 | <1.0 | <1.0 | <1.0 |
| | 3/18/2013 | NM | NM | Not Sampled - Dry | | | |
| | | | | | | | |
| MW27 | 2/25/2009 | 19.98 | NM | <1.0 | <1.0 | <1.0 | <3.0 |
| | | | | Destroyed | | | |
| MW28 | 2/25/2009 | 15.82 | NM | <1.0 | <1.0 | <1.0 | <3.0 |
| | | | | Destroyed | | | |
| MW29 | 2/25/2009 | 16.77 | NM | <1.0 | <1.0 | <1.0 | <3.0 |
| | | | | Destroyed | | | |
| MW30 | 2/25/2009 | 16.86 | NM | <1.0 | <1.0 | <1.0 | <3.0 |
| | | | | Destroyed | | | |
| MW31 | 3/14/2011 | 14.83 | 76.86 | <1.00 | <1.00 | <1.00 | <3.00 |
| | 6/2/2011 | 11.11 | 80.58 | <1.0 | <1.0 | <1.0 | <3.0 |
| | 9/12/2011 | | | Destroyed | | | |
| MW32 | 3/14/2011 | 18.47 | 72.41 | <1.00 | <1.00 | <1.00 | <3.00 |
| | 6/2/2011 | 18.27 | 72.61 | <1.0 | <1.0 | <1.0 | <3.0 |
| | 9/12/2011 | 12.92 | 77.96 | <1.0 | <1.0 | <1.0 | <3.0 |
| | 2/28/2012 | NM | NM | Abandoned per COGCC approval | | | |
| CDPHE WQCC Reg 41 | | | | 5.0 | 560 | 700 | 1,400 |

NOTES:

btoc - below top of casing

µg/L - micrograms per liter

NM - not measured

< indicates result is less than the stated laboratory reporting limit

Bold indicates concentration exceeds CDPHE WQCC Reg 41.

CDPHE WQCC Reg 41 - Colorado Department of Public Health and Environment - Water Quality Control

Commission Regulation 41 covering The Basic Standards for Ground Water

Benzene, toluene, ethylbenzene, and total xylenes analyzed by EPA Method 8260B or 8260C

COGCC - Colorado Oil and Gas Conservation Commission

ATTACHMENT 1

AIR EMISSIONS LABORATORY ANALYTICAL REPORT



February 18, 2013

LT Environmental, Inc.

Rob Rebel

4600 West 60th Avenue

Arvada CO 80003

Project Name - Noble - Chestnut G 22-6

Project Number - NEP0839

Attached are you analytical results for Noble - Chestnut G 22-6 received by Origins Laboratory, Inc. February 12, 2013. This project is associated with Origins project number X302064-01.

The analytical results in the following report were analyzed under the guidelines of EPA Methods. These methods are identified as follows; "SW" are defined in SW-846, "EPA" are defined in 40CFR part 136 and "SM" are defined in the most current revision of Standard Methods For the Examination of Water and Wastewater.

The analytical results apply specifically to the samples and analyses specified per the attached Chain of Custody. As such, this report shall not be reproduced except in full, without the written approval of Origin's laboratory.

Unless otherwise noted, the analytical results for all soil samples are reported on a wet weight basis. All analytical analyses were performed under NELAP guidelines unless noted by a data qualifier.

Any holding time exceedances, deviations from the method specifications or deviations from Origins Laboratory's Standard Operating Procedures are outlined in the case narrative.

Thank you for selecting Origins for your analytical needs. Please contact us with any questions concerning this report, or if we can help with anything at all.

Origins Laboratory, Inc.
303.433.1322
o-squad@oelabinc.com



1725 Elk Place, Denver, CO 80211 | Phone: 303.433.1322 | Fax: 303.265.9645

LT Environmental, Inc.

4600 West 60th Avenue

Arvada CO 80003

Rob Rebel

Project Number: NEP0839

Project: Noble - Chestnut G 22-6

CROSS REFERENCE REPORT

| Sample ID | Laboratory ID | Matrix | Date Sampled | Date Received |
|-----------|---------------|--------|-------------------------|------------------|
| Stack 01 | X302064-01 | Air | February 12, 2013 14:00 | 02/12/2013 16:05 |

Origins Laboratory, Inc.



Noelle E Doyle, President

The results in this report apply to the samples analyzed in accordance with the chain of custody document. This analytical report must be reproduced in its entirety.

Rob Rebel
Project Number: NEP0839
Project: Noble - Chestnut G 22-6

ORIGINS

LABORATORY, INC

www.originslaboratory.com

X302064

page 1 of 1

Client: LTE

Address: 4600 W. 60th Ave.

Telephone Number: 303-433-9288

Email Address: Rebel@kenv.com

Project Manager: Rob Rebel

Project Name: Chesnut G22-6

Project Number: DEP0839

Samples Collected By:

Analysis

| Sample ID Description | Date Sampled | Time Sampled | # of Containers | Preservative | | | | Matrix | | | Sample Instructions | |
|------------------------------|----------------------|--------------------|--------------------------------|----------------------|--------------------|--|-------|-------------|------|----------------------|---------------------|-------|
| | | | | Unpreserved | HCl | HNO ₃ | Other | Groundwater | Soil | Air Summa Canister # | | Other |
| Stack 01 | 2/12/13 | 14:00 | 1 | | | | | | | | | 1 |
| | | | | | | | | | | | | 2 |
| | | | | | | | | | | | | 3 |
| | | | | | | | | | | | | 4 |
| | | | | | | | | | | | | 5 |
| | | | | | | | | | | | | 6 |
| | | | | | | | | | | | | 7 |
| | | | | | | | | | | | | 8 |
| | | | | | | | | | | | | 9 |
| | | | | | | | | | | | | 10 |
| Relinquished By: <u>Ryan</u> | Date: <u>2/12/13</u> | Time: <u>16:05</u> | Received By: <u>Jeff Smith</u> | Date: <u>2/12/13</u> | Time: <u>16:05</u> | Turnaround Time: <input type="checkbox"/> Same Day <input type="checkbox"/> 24 Hr <input type="checkbox"/> 48 Hr <input type="checkbox"/> 72 Hr <input checked="" type="checkbox"/> Standard | | | | | | |
| Relinquished By: | Date: | Time: | Received By: | Date: | Time: | | | | | | | |

Origins Laboratory, Inc.

Naucke

Noelle E Doyle, President

The results in this report apply to the samples analyzed in accordance with the chain of custody document. This analytical report must be reproduced in its entirety.

LT Environmental, Inc.
4600 West 60th Avenue
Arvada CO 80003

Rob Rebel
Project Number: NEP0839
Project: Noble - Chestnut G 22-6

Origins Laboratory

F-012207-01-R1
Effective Date: 01/09/12

Sample Receipt Checklist

Origins Work Order: X302064

Client: LT

Client Project ID: Chestnut G 22-6

Checklist Completed by: Jeff Smith

Shipped Via: H/D
(UPS, FedEx, Hand Delivered, Pick-up, etc.)

Date/time completed: 2/12/13 14:23

Airbill #: _____

Matrix(s) Received: (Check all that apply): _____ Soil/Solid _____ Water ☒ Other: Air

Cooler Number/Temperature: _____ / 21.3°C _____ / _____ °C _____ / _____ °C (Describe) _____ °C

Thermometer ID: T202

| Requirement Description | Yes | No | N/A | Comments (if any) |
|--|-------------------------------------|-------------------------------------|-------------------------------------|-------------------|
| If samples require cooling, was the temperature between 0°C to ≤ 6°C ⁽¹⁾ ? | | | <input checked="" type="checkbox"/> | <u>Air</u> |
| Is there ice present (document if blue ice is used) | | | <input checked="" type="checkbox"/> | <u>Air</u> |
| Are custody seals present on cooler? (if so, document in comments if they are signed and dated, broken or intact) | | <input checked="" type="checkbox"/> | | |
| Are custody seals present on each sample container? (if so, document in comments if they are signed and dated, broken or intact) | | <input checked="" type="checkbox"/> | | |
| Were all samples received intact ⁽¹⁾ ? | <input checked="" type="checkbox"/> | | | |
| Was adequate sample volume provided ⁽¹⁾ ? | <input checked="" type="checkbox"/> | | | |
| Are short holding time analytes or samples with HTs due within 48 hours present ⁽¹⁾ ? | | <input checked="" type="checkbox"/> | | |
| Is a chain-of-custody (COC) present and filled out completely ⁽¹⁾ ? | <input checked="" type="checkbox"/> | | | |
| Does the COC agree with the number and type of sample bottles received ⁽¹⁾ ? | <input checked="" type="checkbox"/> | | | |
| Do the sample IDs on the bottle labels match the COC ⁽¹⁾ ? | <input checked="" type="checkbox"/> | | | |
| Is the COC properly relinquished by the client with date and time recorded ⁽¹⁾ ? | <input checked="" type="checkbox"/> | | | |
| For volatiles in water – is there headspace (> ¼ inch bubble) present? If yes, contact client and note in narrative. | | | <input checked="" type="checkbox"/> | <u>Air</u> |
| Are samples preserved that require preservation and was it checked ⁽¹⁾ ? (note ID of confirmation instrument used in comments) / (preservation is not confirmed for subcontracted analyses in order to insure sample integrity)/(pH <2 for samples preserved with HNO ₃ , HCL, H ₂ SO ₄) / (pH >10 for samples preserved with Na ₂ CO ₃ +NaOH, ZnAc+NaOH) | | | <input checked="" type="checkbox"/> | <u>Air</u> |
| Additional Comments (if any): | | | | |

⁽¹⁾ If NO, then contact the client before proceeding with analysis and note date/time and person contacted as well as the corrective action to in the additional comments (above) and the case narrative.

Reviewed by (Project Manager): [Signature]

2-18-13 1229
Date/Time Reviewed

Origins Laboratory, Inc.

[Signature]

Noelle E Doyle, President

The results in this report apply to the samples analyzed in accordance with the chain of custody document. This analytical report must be reproduced in its entirety.

LT Environmental, Inc.

4600 West 60th Avenue

Arvada CO 80003

Rob Rebel

Project Number: NEP0839

Project: Noble - Chestnut G 22-6

Stack 01

2/12/2013 2:00:00PM

| Analyte | Result | Reporting Limit | Units | Dilution | Batch | Prepared | Analyzed | Notes |
|---------|--------|--------------------|-------|----------|-------|----------|----------|-------|
|---------|--------|--------------------|-------|----------|-------|----------|----------|-------|

Origins Laboratory, Inc.
X302064-01 (Air)

GBTEX by TO-15M GC/MS

| | | | | | | | |
|-----------------------------|------|------|-----------------------|------|---------|------------|------------|
| Gasoline Range Hydrocarbons | 4470 | 636 | ug/m ³ Air | 3.18 | 3B14007 | 02/14/2013 | 02/15/2013 |
| Benzene | ND | 6.36 | " | " | " | " | " |
| Toluene | 19.3 | 15.9 | " | " | " | " | " |
| Ethylbenzene | ND | 15.9 | " | " | " | " | " |
| m,p-Xylene | 198 | 35.0 | " | " | " | " | " |
| o-Xylene | 22.4 | 15.9 | " | " | " | " | " |

| | | | | | | | |
|----------------------------------|--------|--------|--|--|---|---|------------|
| Surrogate: 1,2-Dichloroethane-d4 | 98.4 % | 70-130 | | | " | " | 02/14/2013 |
| Surrogate: Toluene-d8 | 102 % | 70-130 | | | " | " | " |
| Surrogate: 4-Bromofluorobenzene | 103 % | 70-130 | | | " | " | " |

Origins Laboratory, Inc.



The results in this report apply to the samples analyzed in accordance with the chain of custody document. This analytical report must be reproduced in its entirety.

Noelle E Doyle, President

LT Environmental, Inc.
4600 West 60th Avenue
Arvada CO 80003

Rob Rebel
Project Number: NEP0839
Project: Noble - Chestnut G 22-6

Volatile Organic Compounds by EPA Method 8260B in Air - Quality Control

Origins Laboratory, Inc.

| Analyte | Result | Reporting Limit | Units | Spike Level | Source Result | %REC | %REC Limits | RPD | RPD Limit | Notes |
|---------|--------|-----------------|-------|-------------|---------------|------|-------------|-----|-----------|-------|
|---------|--------|-----------------|-------|-------------|---------------|------|-------------|-----|-----------|-------|

Batch 3B14007 - Default Prep - Air

Blank (3B14007-BLK1)

Prepared: 02/14/2013 Analyzed: 02/14/2013

| | | | |
|-----------------------------|----|------|-----------------------|
| Gasoline Range Hydrocarbons | ND | 200 | ug/m ³ Air |
| Benzene | ND | 2.00 | " |
| Toluene | ND | 5.00 | " |
| Ethylbenzene | ND | 5.00 | " |
| m,p-Xylene | ND | 11.0 | " |
| o-Xylene | ND | 5.00 | " |

| | | | | | |
|----------------------------------|------|---|------|-----|--------|
| Surrogate: 1,2-Dichloroethane-d4 | 52.4 | " | 42.1 | 124 | 70-130 |
| Surrogate: Toluene-d8 | 42.2 | " | 41.0 | 103 | 70-130 |
| Surrogate: 4-Bromofluorobenzene | 78.4 | " | 71.6 | 110 | 70-130 |

LCS (3B14007-BS1)

Prepared: 02/14/2013 Analyzed: 02/14/2013

| | | | | | | |
|--------------|------|------|-----------------------|------|-----|--------|
| Benzene | 38.6 | 2.00 | ug/m ³ Air | 32.6 | 119 | 70-130 |
| Toluene | 47.6 | 5.00 | " | 39.6 | 120 | 70-130 |
| Ethylbenzene | 55.9 | 5.00 | " | 45.6 | 123 | 70-130 |
| m,p-Xylene | 226 | 11.0 | " | 179 | 126 | 70-130 |
| o-Xylene | 57.4 | 5.00 | " | 46.5 | 124 | 70-130 |

| | | | | | |
|----------------------------------|------|---|------|-----|--------|
| Surrogate: 1,2-Dichloroethane-d4 | 47.0 | " | 42.1 | 112 | 70-130 |
| Surrogate: Toluene-d8 | 41.9 | " | 41.0 | 102 | 70-130 |
| Surrogate: 4-Bromofluorobenzene | 79.9 | " | 71.6 | 112 | 70-130 |

LCS Dup (3B14007-BSD1)

Prepared: 02/14/2013 Analyzed: 02/14/2013

| | | | | | | | | |
|--------------|------|------|-----------------------|------|-----|--------|-------|----|
| Benzene | 38.4 | 2.00 | ug/m ³ Air | 32.6 | 118 | 70-130 | 0.581 | 20 |
| Toluene | 47.1 | 5.00 | " | 39.6 | 119 | 70-130 | 1.04 | 20 |
| Ethylbenzene | 55.5 | 5.00 | " | 45.6 | 122 | 70-130 | 0.780 | 20 |
| m,p-Xylene | 223 | 11.0 | " | 179 | 125 | 70-130 | 1.35 | 20 |
| o-Xylene | 57.1 | 5.00 | " | 46.5 | 123 | 70-130 | 0.530 | 20 |

| | | | | | |
|----------------------------------|------|---|------|-----|--------|
| Surrogate: 1,2-Dichloroethane-d4 | 46.8 | " | 42.1 | 111 | 70-130 |
|----------------------------------|------|---|------|-----|--------|

Origins Laboratory, Inc.



The results in this report apply to the samples analyzed in accordance with the chain of custody document. This analytical report must be reproduced in its entirety.

Noelle E Doyle, President

LT Environmental, Inc.
4600 West 60th Avenue
Arvada CO 80003

Rob Rebel
Project Number: NEP0839
Project: Noble - Chestnut G 22-6

Volatile Organic Compounds by EPA Method 8260B in Air - Quality Control
Origins Laboratory, Inc.

| Analyte | Result | Reporting Limit | Units | Spike Level | Source Result | %REC | %REC Limits | RPD | RPD Limit | Notes |
|---------|--------|-----------------|-------|-------------|---------------|------|-------------|-----|-----------|-------|
|---------|--------|-----------------|-------|-------------|---------------|------|-------------|-----|-----------|-------|

Batch 3B14007 - Default Prep - Air

LCS Dup (3B14007-BSD1)

Prepared: 02/14/2013 Analyzed: 02/14/2013

| | | | | | | | | | | |
|---------------------------------|------|--|-----------------------|------|--|-----|--------|--|--|--|
| Surrogate: Toluene-d8 | 41.9 | | ug/m ³ Air | 41.0 | | 102 | 70-130 | | | |
| Surrogate: 4-Bromofluorobenzene | 78.2 | | " | 71.6 | | 109 | 70-130 | | | |

Origins Laboratory, Inc.



Noelle E Doyle, President

The results in this report apply to the samples analyzed in accordance with the chain of custody document. This analytical report must be reproduced in its entirety.

LT Environmental, Inc.

4600 West 60th Avenue

Arvada CO 80003

Rob Rebel

Project Number: NEP0839

Project: Noble - Chestnut G 22-6

Notes and Definitions

ND Analyte NOT DETECTED at or above the reporting limit

RPD Relative Percent Difference

Origins Laboratory, Inc.

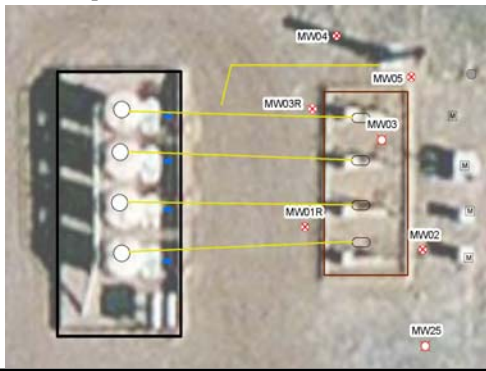


The results in this report apply to the samples analyzed in accordance with the chain of custody document. This analytical report must be reproduced in its entirety.

Noelle E Doyle, President

ATTACHMENT 2
WELL COMPLETION DIAGRAM

Location Map



Compliance • Engineering • Remediation

LT Environmental, Inc.
4600 W. 60th Avenue
Arvada, Colorado 80003

BORING LOG/MONITORING WELL COMPLETION DIAGRAM

BORING/WELL NO.: MW03R
DATE: 3-4-2013
LOGGED BY: Chris Roy
DRILL MTHD: Geoprobe 7000

PROJECT: Chesnut G 22-6
PROJECT NO.: NEP0839
DRILLED BY: ACI Services
SAMPLE MTHD: Continuous

DETECTOR: MiniRae3000

GRAVEL PACK: 10-20 Silica Sand

CASING TYPE: SCH. 40 PVC

SCREEN TYPE: SCH. 40 PVC

HOLE DIA.: 2.25"

SEAL: Bent. Chips

CASING DIA.: 1"

SCREEN SLOT: 0.010"

TD: 20' **DTW:** 16'

GROUT: NA

CASING LENGTH: 5'

SCREEN LENGTH: 15'

| Penetration Resistance | Moisture Content | Vapor (ppm) | Staining | Sample | Sample Run | Depth (ft. bgs.) | USCS | Soil Type | Lithology Description | Well Construction |
|------------------------|------------------|-------------|----------|--------|-------------|------------------|------|-----------|--|-------------------|
| | Dry | | | | | 0 | | | 0'-5'- Hand augered, not logged | |
| | Moist | 0.0 | | | | 5 | SC | | SC: Sand - 5'-12' - medium grained, clayey, some silt, brown, moist, low cohesion, low plasticity, no odor | |
| | | 0.0 | | | | 10 | | | | |
| | | 715.2 | | | MW03R @ 12' | 12 | CL | | CL: Clay - 12'-15' - sandy, some gravel, gray stained, moist, low cohesion, low plasticity, moderate odor | |
| | | 492.9 | | | | 15 | | | | |
| | Wet | 248.0 | | | | 16 | | | CL: Clay - 15'-20' - sandy, some gravel, gray stained from 15'-19', wet @ 16', low-moderate cohesion, low plasticity, moderate odor from 15'-19' | |
| | | 22.35 | | | | 18 | | | | |
| | | 0.9 | | | | 20 | | | | |

ATTACHMENT 3

SOIL AND GROUNDWATER LABORATORY ANALYTICAL REPORTS

Summit Scientific

741 Corporate Circle – Suite I ♦ Golden, Colorado 80401

303.277.9310 - laboratory ♦ 303.277.9531 - fax

March 11, 2013

John Cocroft
LT Environmental, Inc.
4600 West 60th Avenue
Arvada, CO 80003
RE: NEP - Chestnut G 22-6

Enclosed are the results of analyses for samples received by Summit Scientific on 03/04/13 17:00. If you have any questions concerning this report, please feel free to contact me.

Sincerely,



Joseph J Egry IV
Laboratory Director

This report shall not be reproduced, except in its entirety, without the written approval of Summit Scientific. Test results relate only to samples analyzed.

Summit Scientific is the sole authority for authorizing edits or modifications to this document. Unauthorized modification of this report is strictly prohibited.

LT Environmental, Inc.
4600 West 60th Avenue
Arvada CO, 80003

Project: NEP - Chestnut G 22-6

Project Number: NEP 0839
Project Manager: John Cocroft

Reported:
03/11/13 16:11

ANALYTICAL REPORT FOR SAMPLES

| Sample ID | Laboratory ID | Matrix | Date Sampled | Date Received |
|-------------|---------------|--------|----------------|----------------|
| MW03R @ 12' | R303025-01 | Soil | 03/04/13 00:00 | 03/04/13 17:00 |

R303025

Summit Scientific

20

741 Corporate Circle Suite I ♦ Golden, Colorado 80401
303-277-9310 ♦ 303-277-9531 Fax

Page _____ of _____

Client: LT Environmental, Inc.

Address 4600 West 60th Avenue

City/State/Zip* Arvada CO 80003

Phone: (702) 422-0788

DATE: 10/10/2014

7501

Project Manager: John Cocroft

E-Mail: icacraft@att.net

Artist Name: August 6

Deniset Number: A12

10/2005 RELEASE

[illegible]

www.s2scientific.com

Summit Scientific

The results in this report apply to the samples analyzed in accordance with the chain of custody document. This analytical report must be reproduced in its entirety.

Carol Myers IV



LT Environmental, Inc.
4600 West 60th Avenue
Arvada CO, 80003

Project: NEP - Chestnut G 22-6

Project Number: NEP 0839
Project Manager: John Cocroft

Reported:
03/11/13 16:11

MW03R @ 12'
R303025-01 (Soil)

Summit Scientific

Extractable Petroleum Hydrocarbons by 8015

Date Sampled: **03/04/13 00:00**

| Analyte | Result | Reporting Limit | Units | Dilution | Batch | Prepared | Analyzed | Method | Notes |
|---------------|--------|-----------------|-------|----------|---------|----------|----------|------------------------|-------|
| C10-C28 (DRO) | 260 | 50 | mg/kg | 1 | 3030704 | 03/07/13 | 03/08/13 | 8015 Full Carbon Chain | |

Date Sampled: **03/04/13 00:00**

| Analyte | Result | Reporting Limit | Units | Dilution | Batch | Prepared | Analyzed | Method | Notes |
|------------------------|--------|-----------------|--------|----------|-------|----------|----------|--------|-------|
| Surrogate: o-Terphenyl | | 97.9 % | 30-150 | | " | " | " | " | |

Volatile Organic Compounds by EPA Method 8260B

Date Sampled: **03/04/13 00:00**

| Analyte | Result | Reporting Limit | Units | Dilution | Batch | Prepared | Analyzed | Method | Notes |
|-----------------------------|--------|-----------------|-------|----------|---------|----------|----------|-----------|-------|
| Benzene | ND | 0.0050 | mg/kg | 1 | 3030703 | 03/07/13 | 03/08/13 | EPA 8260B | |
| Toluene | ND | 0.0050 | " | " | " | " | " | " | |
| Ethylbenzene | ND | 0.0050 | " | " | " | " | " | " | |
| Xylenes (total) | ND | 0.0050 | " | " | " | " | " | " | |
| Gasoline Range Hydrocarbons | 26 | 0.50 | " | " | " | " | " | " | |

Date Sampled: **03/04/13 00:00**

| Analyte | Result | Reporting Limit | Units | Dilution | Batch | Prepared | Analyzed | Method | Notes |
|----------------------------------|--------|-----------------|--------|----------|-------|----------|----------|--------|-------|
| Surrogate: 1,2-Dichloroethane-d4 | | 113 % | 23-173 | | " | " | " | " | |
| Surrogate: Toluene-d8 | | 121 % | 20-170 | | " | " | " | " | |
| Surrogate: 4-Bromofluorobenzene | | 147 % | 21-167 | | " | " | " | " | |

Summit Scientific

The results in this report apply to the samples analyzed in accordance with the chain of custody document. This analytical report must be reproduced in its entirety.



LT Environmental, Inc.
4600 West 60th Avenue
Arvada CO, 80003

Project: NEP - Chestnut G 22-6

Project Number: NEP 0839
Project Manager: John Cocroft

Reported:
03/11/13 16:11

Extractable Petroleum Hydrocarbons by 8015 - Quality Control
Summit Scientific

| Analyte | Reporting | | | Spike | Source | | %REC | | RPD | |
|---------|-----------|-------|-------|-------|--------|------|--------|-----|-------|-------|
| | Result | Limit | Units | Level | Result | %REC | Limits | RPD | Limit | Notes |

Batch 3030704 - EPA 3550A

Blank (3030704-BLK1)

Prepared & Analyzed: 03/07/13

C10-C28 (DRO) ND 50 mg/kg

LCS (3030704-BS1)

Prepared & Analyzed: 03/07/13

C10-C28 (DRO) 540 50 mg/kg 501 108 73-134

LCS Dup (3030704-BSD1)

Prepared & Analyzed: 03/07/13

C10-C28 (DRO) 511 50 mg/kg 501 102 73-134 5.51 11

Matrix Spike (3030704-MS1)

Source: R303024-04

Prepared & Analyzed: 03/07/13

C10-C28 (DRO) 572 50 mg/kg 501 223 69.5 50-148

Matrix Spike Dup (3030704-MSD1)

Source: R303024-04

Prepared & Analyzed: 03/07/13

C10-C28 (DRO) 578 50 mg/kg 501 223 70.8 50-148 1.15 13

Summit Scientific

The results in this report apply to the samples analyzed in accordance with the chain of custody document. This analytical report must be reproduced in its entirety.



LT Environmental, Inc.
4600 West 60th Avenue
Arvada CO, 80003

Project: NEP - Chestnut G 22-6

Project Number: NEP 0839
Project Manager: John Cocroft

Reported:
03/11/13 16:11

Volatile Organic Compounds by EPA Method 8260B - Quality Control
Summit Scientific

| Analyte | Reporting | | | Spike | Source | | %REC | | RPD | |
|---------|-----------|-------|-------|-------|--------|------|--------|-----|-------|-------|
| | Result | Limit | Units | Level | Result | %REC | Limits | RPD | Limit | Notes |

Batch 3030703 - EPA 5030 Soil MS

Blank (3030703-BLK1)

Prepared: 03/07/13 Analyzed: 03/08/13

| | | | |
|-----------------------------|----|--------|-------|
| Benzene | ND | 0.0050 | mg/kg |
| Toluene | ND | 0.0050 | " |
| Ethylbenzene | ND | 0.0050 | " |
| Xylenes (total) | ND | 0.0050 | " |
| Gasoline Range Hydrocarbons | ND | 0.50 | " |

| | | | | | |
|----------------------------------|--------|---|--------|-----|--------|
| Surrogate: 1,2-Dichloroethane-d4 | 0.0484 | " | 0.0397 | 122 | 23-173 |
| Surrogate: Toluene-d8 | 0.0427 | " | 0.0400 | 107 | 20-170 |
| Surrogate: 4-Bromofluorobenzene | 0.0415 | " | 0.0400 | 104 | 21-167 |

LCS (3030703-BS1)

Prepared: 03/07/13 Analyzed: 03/08/13

| | | | | | | |
|----------------------------------|--------|--------|-------|--------|------|--------|
| Benzene | 0.109 | 0.0050 | mg/kg | 0.100 | 109 | 58-130 |
| Toluene | 0.114 | 0.0050 | " | 0.100 | 114 | 61-134 |
| Ethylbenzene | 0.129 | 0.0050 | " | 0.100 | 129 | 74-139 |
| m,p-Xylene | 0.251 | 0.010 | " | 0.200 | 126 | 73-137 |
| o-Xylene | 0.124 | 0.0050 | " | 0.100 | 124 | 73-141 |
| <hr/> | | | | | | |
| Surrogate: 1,2-Dichloroethane-d4 | 0.0457 | | " | 0.0397 | 115 | 23-173 |
| Surrogate: Toluene-d8 | 0.0416 | | " | 0.0400 | 104 | 20-170 |
| Surrogate: 4-Bromofluorobenzene | 0.0394 | | " | 0.0400 | 98.5 | 21-167 |

LCS Dup (3030703-BSD1)

Prepared: 03/07/13 Analyzed: 03/08/13

| | | | | | | | | |
|----------------------------------|--------|--------|-------|--------|------|--------|-------|----|
| Benzene | 0.107 | 0.0050 | mg/kg | 0.100 | 107 | 58-130 | 1.87 | 13 |
| Toluene | 0.112 | 0.0050 | " | 0.100 | 112 | 61-134 | 1.96 | 16 |
| Ethylbenzene | 0.128 | 0.0050 | " | 0.100 | 128 | 74-139 | 0.373 | 12 |
| m,p-Xylene | 0.252 | 0.010 | " | 0.200 | 126 | 73-137 | 0.238 | 14 |
| o-Xylene | 0.122 | 0.0050 | " | 0.100 | 122 | 73-141 | 1.22 | 12 |
| <hr/> | | | | | | | | |
| Surrogate: 1,2-Dichloroethane-d4 | 0.0433 | | " | 0.0397 | 109 | 23-173 | | |
| Surrogate: Toluene-d8 | 0.0413 | | " | 0.0400 | 103 | 20-170 | | |
| Surrogate: 4-Bromofluorobenzene | 0.0387 | | " | 0.0400 | 96.7 | 21-167 | | |

Summit Scientific

The results in this report apply to the samples analyzed in accordance with the chain of custody document. This analytical report must be reproduced in its entirety.



LT Environmental, Inc.
4600 West 60th Avenue
Arvada CO, 80003

Project: NEP - Chestnut G 22-6

Project Number: NEP 0839
Project Manager: John Cocroft

Reported:
03/11/13 16:11

Volatile Organic Compounds by EPA Method 8260B - Quality Control
Summit Scientific

| Analyte | Reporting | | | Spike | Source | | %REC | | RPD | |
|---------|-----------|-------|-------|-------|--------|------|--------|-----|-------|-------|
| | Result | Limit | Units | Level | Result | %REC | Limits | RPD | Limit | Notes |

Batch 3030703 - EPA 5030 Soil MS

| Matrix Spike (3030703-MS1) | | Source: R303024-04 | | | Prepared: 03/07/13 | | Analyzed: 03/08/13 | | | |
|----------------------------------|--------|--------------------|-------|--------|--------------------|------|--------------------|--|--|-------|
| Benzene | 0.109 | 0.0050 | mg/kg | 0.100 | ND | 109 | 30-131 | | | |
| Toluene | 0.115 | 0.0050 | " | 0.100 | ND | 115 | 30-134 | | | |
| Ethylbenzene | 0.128 | 0.0050 | " | 0.100 | 0.101 | 26.7 | 22-153 | | | QM-07 |
| m,p-Xylene | 0.251 | 0.010 | " | 0.200 | 0.332 | NR | 10-159 | | | QM-07 |
| o-Xylene | 0.123 | 0.0050 | " | 0.100 | 0.00792 | 116 | 31-151 | | | |
| Surrogate: 1,2-Dichloroethane-d4 | 0.0483 | | " | 0.0397 | | 122 | 23-173 | | | |
| Surrogate: Toluene-d8 | 0.0418 | | " | 0.0400 | | 105 | 20-170 | | | |
| Surrogate: 4-Bromofluorobenzene | 0.0386 | | " | 0.0400 | | 96.6 | 21-167 | | | |

| Matrix Spike Dup (3030703-MSD1) | | Source: R303024-04 | | | Prepared: 03/07/13 | | Analyzed: 03/08/13 | | | |
|----------------------------------|--------|--------------------|-------|--------|--------------------|------|--------------------|--------|----|-------|
| Benzene | 0.109 | 0.0050 | mg/kg | 0.100 | ND | 109 | 30-131 | 0.276 | 34 | |
| Toluene | 0.115 | 0.0050 | " | 0.100 | ND | 115 | 30-134 | 0.261 | 30 | |
| Ethylbenzene | 0.130 | 0.0050 | " | 0.100 | 0.101 | 28.6 | 22-153 | 1.49 | 24 | QM-07 |
| m,p-Xylene | 0.253 | 0.010 | " | 0.200 | 0.332 | NR | 10-159 | 0.715 | 68 | QM-07 |
| o-Xylene | 0.123 | 0.0050 | " | 0.100 | 0.00792 | 115 | 31-151 | 0.0729 | 38 | |
| Surrogate: 1,2-Dichloroethane-d4 | 0.0485 | | " | 0.0397 | | 122 | 23-173 | | | |
| Surrogate: Toluene-d8 | 0.0421 | | " | 0.0400 | | 105 | 20-170 | | | |
| Surrogate: 4-Bromofluorobenzene | 0.0393 | | " | 0.0400 | | 98.2 | 21-167 | | | |

Summit Scientific

The results in this report apply to the samples analyzed in accordance with the chain of custody document. This analytical report must be reproduced in its entirety.



LT Environmental, Inc.
4600 West 60th Avenue
Arvada CO, 80003

Project: NEP - Chestnut G 22-6

Project Number: NEP 0839
Project Manager: John Cocroft

Reported:
03/11/13 16:11

Notes and Definitions

QM-07 The spike recovery was outside acceptance limits for the MS and/or MSD. The batch was accepted based on acceptable LCS/LCSD recovery.

DET Analyte DETECTED

ND Analyte NOT DETECTED at or above the reporting limit

NR Not Reported

dry Sample results reported on a dry weight basis

RPD Relative Percent Difference



March 21, 2013

LT Environmental, Inc.

Chris Roy

4600 West 60th Avenue

Arvada CO 80003

Project Name - Noble - Chestnut G 22-6

Project Number - NEP0839

Attached are you analytical results for Noble - Chestnut G 22-6 received by Origins Laboratory, Inc. March 18, 2013. This project is associated with Origins project number X303111-01.

The analytical results in the following report were analyzed under the guidelines of EPA Methods. These methods are identified as follows; "SW" are defined in SW-846, "EPA" are defined in 40CFR part 136 and "SM" are defined in the most current revision of Standard Methods For the Examination of Water and Wastewater.

The analytical results apply specifically to the samples and analyses specified per the attached Chain of Custody. As such, this report shall not be reproduced except in full, without the written approval of Origin's laboratory.

Unless otherwise noted, the analytical results for all soil samples are reported on a wet weight basis. All analytical analyses were performed under NELAP guidelines unless noted by a data qualifier.

Any holding time exceedances, deviations from the method specifications or deviations from Origins Laboratory's Standard Operating Procedures are outlined in the case narrative.

Thank you for selecting Origins for your analytical needs. Please contact us with any questions concerning this report, or if we can help with anything at all.

Origins Laboratory, Inc.
303.433.1322
o-squad@oelabinc.com



1725 Elk Place, Denver, CO 80211 | Phone: 303.433.1322 | Fax: 303.265.9645

LT Environmental, Inc.
4600 West 60th Avenue
Arvada CO 80003

Chris Roy
Project Number: NEP0839
Project: Noble - Chestnut G 22-6

CROSS REFERENCE REPORT

| Sample ID | Laboratory ID | Matrix | Date Sampled | Date Received |
|-----------|---------------|--------|----------------------|------------------|
| MW-2 | X303111-01 | Water | March 18, 2013 14:20 | 03/18/2013 16:45 |
| MW-3R | X303111-02 | Water | March 18, 2013 14:20 | 03/18/2013 16:45 |
| MW-4 | X303111-03 | Water | March 18, 2013 14:25 | 03/18/2013 16:45 |
| MW-5 | X303111-04 | Water | March 18, 2013 13:15 | 03/18/2013 16:45 |
| MW-6 | X303111-05 | Water | March 18, 2013 14:32 | 03/18/2013 16:45 |
| MW-7 | X303111-06 | Water | March 18, 2013 14:38 | 03/18/2013 16:45 |
| MW-10 | X303111-07 | Water | March 18, 2013 14:45 | 03/18/2013 16:45 |
| MW-11 | X303111-08 | Water | March 18, 2013 15:11 | 03/18/2013 16:45 |
| MW-12 | X303111-09 | Water | March 18, 2013 14:35 | 03/18/2013 16:45 |
| MW-13 | X303111-10 | Water | March 18, 2013 14:30 | 03/18/2013 16:45 |
| MW-15 | X303111-11 | Water | March 18, 2013 14:40 | 03/18/2013 16:45 |

Origins Laboratory, Inc.



Noelle E Doyle, President

The results in this report apply to the samples analyzed in accordance with the chain of custody document. This analytical report must be reproduced in its entirety.

LT Environmental, Inc.
4600 West 60th Avenue
Arvada CO 80003

Chris Roy
Project Number: NEP0839
Project: Noble - Chestnut G 22-6

www.originslaboratory.com

page 1 of 2

X303111

ORIGINS
LABORATORY, INC

| | | | |
|-------------------|-----------------------------|-----------------------|--------------------|
| Client: | LT Environmental | Project Manager: | Chris Roy |
| Address: | 4600 W 60th Ave, Arvada, CO | Project Name: | Chestnut G 22-6 |
| Telephone Number: | | Project Number: | NEP0839 |
| Email Address: | croyle@ltenv.com | Samples Collected By: | D. Hosler B. Finow |

| Sample ID Description | Date Sampled | Time Sampled | # of Containers | Preservative | | | | Matrix | | | Analysis | Sample Instructions | |
|-----------------------|--------------|--------------|-----------------|--------------|-----|------------------|-------|-------------|------|----------------------|----------|---------------------|-------|
| | | | | Unpreserved | HCl | HNO ₃ | Other | Groundwater | Soil | Air Summa Canister # | | | Other |
| MW02 | 03/18/13 | 1420 | 3 | X | | | | X | | | | 1 | |
| MW03R | | 1420 | 2 | X | | | | X | | | | 2 | |
| MW04 | | 1425 | 1 | X | | | | X | | | | 3 | |
| MW05 | | 1315 | 1 | X | | | | X | | | | 4 | |
| MW06 | | 1432 | 3 | X | | | | X | | | | 5 | |
| MW07 | | 1438 | 3 | X | | | | X | | | | 6 | |
| MW10 | | 1445 | 3 | X | | | | X | | | | 7 | |
| MW11 | | 1511 | 3 | X | | | | X | | | | 8 | |
| MW12 | | 1435 | 3 | X | | | | X | | | | 9 | |
| MW13 | | 1430 | 3 | X | | | | X | | | | 10 | |

| | | | | | | |
|------------------|------------|-------|-------------------|---------|-------|---|
| Relinquished By: | Date: | Time: | Received By: | Date: | Time: | Turnaround Time: |
| <i>Thadde</i> | 03/18/2013 | 1645 | <i>Jeff Smith</i> | 3/18/13 | 16:45 | Same Day <input type="checkbox"/> 24 Hr <input type="checkbox"/> 48 Hr <input type="checkbox"/> 72 Hr <input type="checkbox"/> Standard <input checked="" type="checkbox"/> |

1725 Elk Place | Denver, CO 80211 | Phone: 303.433.1322 | Fax: 303.265.9645

Origins Laboratory, Inc.

Noelle E Doyle

Noelle E Doyle, President

The results in this report apply to the samples analyzed in accordance with the chain of custody document. This analytical report must be reproduced in its entirety.

LT Environmental, Inc.
4600 West 60th Avenue
Arvada CO 80003

Chris Roy
Project Number: NEP0839
Project: Noble - Chestnut G 22-6

www.originslaboratory.com

page 2 of 2

X303111

ORIGINS
LABORATORY, INC

Client: LT Environmental
Address: 4600 W. 60th Ave Arvada, CO
Telephone Number:
Email Address: croy@ltenv.com

Project Manager: Chris Roy
Project Name: Chestnut G 22-6
Project Number: NEP0839
Samples Collected By: D. Hiler, B. Finn

| Sample ID Description | Date Sampled | Time Sampled | # of Containers | Preservative | | | | Matrix | | | Other | Analysis | Sample Instructions |
|-----------------------|--------------|--------------|-----------------|--------------|-----|------------------|-------|-------------|------|-------------|-------|----------|---------------------|
| | | | | Unpreserved | HCl | HNO ₃ | Other | Groundwater | Soil | Air Summa # | | | |
| MWIS | 03/18/13 | 1440 | 3 | X | | | | X | | | | | 1 |
| | | | | | | | | | | | | | 2 |
| | | | | | | | | | | | | | 3 |
| | | | | | | | | | | | | | 4 |
| | | | | | | | | | | | | | 5 |
| | | | | | | | | | | | | | 6 |
| | | | | | | | | | | | | | 7 |
| | | | | | | | | | | | | | 8 |
| | | | | | | | | | | | | | 9 |
| | | | | | | | | | | | | | 10 |

Relinquished By: [Signature] Date: 03/18/2013 Time: 1645
Relinquished By: [Signature] Date: 3/18/13 Time: 1645

Received By: [Signature] Date: 3/18/13 Time: 1645

Turnaround Time: Same Day ☐ 24 Hr ☐ 48 Hr ☐ 72 Hr ☒ Standard

Data Facility Needed

Origins Laboratory, Inc.

[Signature]

Noelle E Doyle, President

The results in this report apply to the samples analyzed in accordance with the chain of custody document. This analytical report must be reproduced in its entirety.

LT Environmental, Inc.
4600 West 60th Avenue
Arvada CO 80003

Chris Roy
Project Number: NEP0839
Project: Noble - Chestnut G 22-6

Origins Laboratory

F-012207-01-R1
Effective Date: 01/09/12

Sample Receipt Checklist

Origins Work Order: X303111

Client: LT

Client Project ID: Chestnut G 22-6

Checklist Completed by: Jose Smith

Shipped Via: HD
(UPS, FedEx, Hand Delivered, Pick-up, etc.)

Date/time completed: 3/18/13 16:50

Airbill #: _____

Matrix(s) Received: (Check all that apply): _____ Soil/Solid ☒ Water _____ Other: _____

Cooler Number/Temperature: 1 17.6 °C _____ °C _____ °C (Describe)

Thermometer ID: TWD

| Requirement Description | Yes | No | N/A | Comments (if any) |
|--|-------------------------------------|-------------------------------------|-----|--|
| If samples require cooling, was the temperature between 0°C to ≤ 6°C ⁽¹⁾ ? | | <input checked="" type="checkbox"/> | | Sampled Same Day |
| Is there ice present (document if blue ice is used) | <input checked="" type="checkbox"/> | | | |
| Are custody seals present on cooler? (if so, document in comments if they are signed and dated, broken or intact) | | <input checked="" type="checkbox"/> | | |
| Are custody seals present on each sample container? (if so, document in comments if they are signed and dated, broken or intact) | | <input checked="" type="checkbox"/> | | |
| Were all samples received intact ⁽¹⁾ ? | <input checked="" type="checkbox"/> | | | |
| Was adequate sample volume provided ⁽¹⁾ ? | <input checked="" type="checkbox"/> | | | |
| Are short holding time analytes or samples with HTs due within 48 hours present ⁽¹⁾ ? | | <input checked="" type="checkbox"/> | | |
| Is a chain-of-custody (COC) present and filled out completely ⁽¹⁾ ? | <input checked="" type="checkbox"/> | | | |
| Does the COC agree with the number and type of sample bottles received ⁽¹⁾ ? | <input checked="" type="checkbox"/> | | | |
| Do the sample IDs on the bottle labels match the COC ⁽¹⁾ ? | <input checked="" type="checkbox"/> | | | |
| Is the COC properly relinquished by the client with date and time recorded ⁽¹⁾ ? | <input checked="" type="checkbox"/> | | | |
| For volatiles in water – is there headspace (> ¼ inch bubble) present? If yes, contact client and note in narrative. | | <input checked="" type="checkbox"/> | | |
| Are samples preserved that require preservation and was it checked ⁽¹⁾ ? (note ID of confirmation instrument used in comments) / (preservation is not confirmed for subcontracted analyses in order to insure sample integrity)(pH <2 for samples preserved with HNO ₃ , HCL, H ₂ SO ₄) / (pH >10 for samples preserved with NaAsO ₂ +NaOH, ZnAc+NaOH) | | <input checked="" type="checkbox"/> | | Samples will be analyzed within 7 Days of Collection |
| Additional Comments (if any): | | | | |

⁽¹⁾If NO, then contact the client before proceeding with analysis and note date/time and person contacted as well as the corrective action to in the additional comments (above) and the case narrative.

Reviewed by: [Signature] (Project Manager)

3/19/13 1335
Date/Time Reviewed

Origins Laboratory, Inc.

[Signature]

Noelle E Doyle, President

The results in this report apply to the samples analyzed in accordance with the chain of custody document. This analytical report must be reproduced in its entirety.

LT Environmental, Inc.
4600 West 60th Avenue
Arvada CO 80003

Chris Roy
Project Number: NEP0839
Project: Noble - Chestnut G 22-6

MW-2

3/18/2013 2:20:00PM

| Analyte | Result | Reporting | | Units | Dilution | Batch | Prepared | Analyzed | Notes |
|---------|--------|-----------|--|-------|----------|-------|----------|----------|-------|
| | | Limit | | | | | | | |

Origins Laboratory, Inc.
X303111-01 (Water)

BTEX by EPA 8260C

| | | | | | | | |
|----------------|------|-----|------|---|---------|------------|------------|
| Benzene | ND | 1.0 | ug/L | 1 | 3C19009 | 03/19/2013 | 03/20/2013 |
| Toluene | ND | 1.0 | " | " | " | " | " |
| Ethylbenzene | 14.8 | 1.0 | " | " | " | " | " |
| Xylenes, total | 60.3 | 1.0 | " | " | " | " | " |

| | | | | | | |
|----------------------------------|--------|--------|--|---|---|------------|
| Surrogate: 1,2-Dichloroethane-d4 | 91.5 % | 70-130 | | " | " | 03/19/2013 |
| Surrogate: Toluene-d8 | 99.2 % | 70-130 | | " | " | " |
| Surrogate: 4-Bromofluorobenzene | 102 % | 70-130 | | " | " | " |

Origins Laboratory, Inc.



Noelle E Doyle, President

The results in this report apply to the samples analyzed in accordance with the chain of custody document. This analytical report must be reproduced in its entirety.

LT Environmental, Inc.
4600 West 60th Avenue
Arvada CO 80003

Chris Roy
Project Number: NEP0839
Project: Noble - Chestnut G 22-6

MW-3R

3/18/2013 2:20:00PM

| Analyte | Result | Reporting | | Units | Dilution | Batch | Prepared | Analyzed | Notes |
|---------|--------|-----------|--|-------|----------|-------|----------|----------|-------|
| | | Limit | | | | | | | |

Origins Laboratory, Inc.
X303111-02 (Water)

BTEX by EPA 8260C

| | | | | | | | |
|----------------|------|-----|------|---|---------|------------|------------|
| Benzene | ND | 2.0 | ug/L | 2 | 3C19009 | 03/19/2013 | 03/20/2013 |
| Toluene | ND | 2.0 | " | " | " | " | " |
| Ethylbenzene | 1.98 | 2.0 | " | " | " | " | " |
| Xylenes, total | 27.5 | 2.0 | " | " | " | " | " |

| | | | | | | | |
|----------------------------------|--------|--------|--|--|---|---|------------|
| Surrogate: 1,2-Dichloroethane-d4 | 94.0 % | 70-130 | | | " | " | 03/19/2013 |
| Surrogate: Toluene-d8 | 101 % | 70-130 | | | " | " | " |
| Surrogate: 4-Bromofluorobenzene | 102 % | 70-130 | | | " | " | " |

Origins Laboratory, Inc.



The results in this report apply to the samples analyzed in accordance with the chain of custody document. This analytical report must be reproduced in its entirety.

Noelle E Doyle, President

LT Environmental, Inc.
4600 West 60th Avenue
Arvada CO 80003

Chris Roy
Project Number: NEP0839
Project: Noble - Chestnut G 22-6

MW-4

3/18/2013 2:25:00PM

| Analyte | Result | Reporting Limit | Units | Dilution | Batch | Prepared | Analyzed | Notes |
|---------|--------|-----------------|-------|----------|-------|----------|----------|-------|
|---------|--------|-----------------|-------|----------|-------|----------|----------|-------|

Origins Laboratory, Inc.
X303111-03 (Water)

BTEX by EPA 8260C

| | | | | | | | |
|----------------|------|-----|------|---|---------|------------|------------|
| Benzene | 10.2 | 1.0 | ug/L | 1 | 3C19009 | 03/19/2013 | 03/20/2013 |
| Toluene | ND | 1.0 | " | " | " | " | " |
| Ethylbenzene | 1.49 | 1.0 | " | " | " | " | " |
| Xylenes, total | 6.27 | 1.0 | " | " | " | " | " |

| | | | | | | | |
|----------------------------------|--------|--------|--|--|---|---|------------|
| Surrogate: 1,2-Dichloroethane-d4 | 94.6 % | 70-130 | | | " | " | 03/19/2013 |
| Surrogate: Toluene-d8 | 100 % | 70-130 | | | " | " | " |
| Surrogate: 4-Bromofluorobenzene | 105 % | 70-130 | | | " | " | " |

Origins Laboratory, Inc.



The results in this report apply to the samples analyzed in accordance with the chain of custody document. This analytical report must be reproduced in its entirety.

Noelle E Doyle, President

LT Environmental, Inc.
4600 West 60th Avenue
Arvada CO 80003

Chris Roy
Project Number: NEP0839
Project: Noble - Chestnut G 22-6

MW-5

3/18/2013 1:15:00PM

| Analyte | Result | Reporting | | Units | Dilution | Batch | Prepared | Analyzed | Notes |
|---------|--------|-----------|--|-------|----------|-------|----------|----------|-------|
| | | Limit | | | | | | | |

Origins Laboratory, Inc.
X303111-04 (Water)

BTEX by EPA 8260C

| | | | | | | | |
|----------------|----|-----|------|------|---------|------------|------------|
| Benzene | ND | 1.3 | ug/L | 1.33 | 3C19009 | 03/19/2013 | 03/19/2013 |
| Toluene | ND | 1.3 | " | " | " | " | " |
| Ethylbenzene | ND | 1.3 | " | " | " | " | " |
| Xylenes, total | ND | 4.0 | " | " | " | " | " |

| | | | | | |
|----------------------------------|--------|--------|---|---|---|
| Surrogate: 1,2-Dichloroethane-d4 | 94.5 % | 70-130 | " | " | " |
| Surrogate: Toluene-d8 | 101 % | 70-130 | " | " | " |
| Surrogate: 4-Bromofluorobenzene | 104 % | 70-130 | " | " | " |

Origins Laboratory, Inc.



The results in this report apply to the samples analyzed in accordance with the chain of custody document. This analytical report must be reproduced in its entirety.

Noelle E Doyle, President

LT Environmental, Inc.
4600 West 60th Avenue
Arvada CO 80003

Chris Roy
Project Number: NEP0839
Project: Noble - Chestnut G 22-6

MW-6

3/18/2013 2:32:00PM

| Analyte | Result | Reporting | | Units | Dilution | Batch | Prepared | Analyzed | Notes |
|---------|--------|-----------|--|-------|----------|-------|----------|----------|-------|
| | | Limit | | | | | | | |

Origins Laboratory, Inc.
X303111-05 (Water)

BTEX by EPA 8260C

| | | | | | | | |
|----------------|------|-----|------|---|---------|------------|------------|
| Benzene | ND | 1.0 | ug/L | 1 | 3C19009 | 03/19/2013 | 03/19/2013 |
| Toluene | ND | 1.0 | " | " | " | " | " |
| Ethylbenzene | 2.84 | 1.0 | " | " | " | " | " |
| Xylenes, total | 8.79 | 3.0 | " | " | " | " | " |

| | | | | | |
|----------------------------------|--------|--------|---|---|---|
| Surrogate: 1,2-Dichloroethane-d4 | 93.2 % | 70-130 | " | " | " |
| Surrogate: Toluene-d8 | 100 % | 70-130 | " | " | " |
| Surrogate: 4-Bromofluorobenzene | 106 % | 70-130 | " | " | " |

Origins Laboratory, Inc.



The results in this report apply to the samples analyzed in accordance with the chain of custody document. This analytical report must be reproduced in its entirety.

Noelle E Doyle, President

LT Environmental, Inc.
4600 West 60th Avenue
Arvada CO 80003

Chris Roy
Project Number: NEP0839
Project: Noble - Chestnut G 22-6

MW-7

3/18/2013 2:38:00PM

| Analyte | Result | Reporting | | Units | Dilution | Batch | Prepared | Analyzed | Notes |
|---------|--------|-----------|--|-------|----------|-------|----------|----------|-------|
| | | Limit | | | | | | | |

Origins Laboratory, Inc.
X303111-06 (Water)

BTEX by EPA 8260C

| | | | | | | | |
|----------------|----|-----|------|---|---------|------------|------------|
| Benzene | ND | 1.0 | ug/L | 1 | 3C19009 | 03/19/2013 | 03/19/2013 |
| Toluene | ND | 1.0 | " | " | " | " | " |
| Ethylbenzene | ND | 1.0 | " | " | " | " | " |
| Xylenes, total | ND | 3.0 | " | " | " | " | " |

| | | | | | |
|----------------------------------|--------|--------|---|---|---|
| Surrogate: 1,2-Dichloroethane-d4 | 94.3 % | 70-130 | " | " | " |
| Surrogate: Toluene-d8 | 99.9 % | 70-130 | " | " | " |
| Surrogate: 4-Bromofluorobenzene | 106 % | 70-130 | " | " | " |

Origins Laboratory, Inc.



Noelle E Doyle, President

The results in this report apply to the samples analyzed in accordance with the chain of custody document. This analytical report must be reproduced in its entirety.

LT Environmental, Inc.
4600 West 60th Avenue
Arvada CO 80003

Chris Roy
Project Number: NEP0839
Project: Noble - Chestnut G 22-6

MW-10
3/18/2013 2:45:00PM

| Analyte | Result | Reporting Limit | Units | Dilution | Batch | Prepared | Analyzed | Notes |
|---------|--------|--------------------|-------|----------|-------|----------|----------|-------|
|---------|--------|--------------------|-------|----------|-------|----------|----------|-------|

Origins Laboratory, Inc.
X303111-07 (Water)

BTEX by EPA 8260C

| | | | | | | | |
|----------------|----|-----|------|---|---------|------------|------------|
| Benzene | ND | 1.0 | ug/L | 1 | 3C19009 | 03/19/2013 | 03/19/2013 |
| Toluene | ND | 1.0 | " | " | " | " | " |
| Ethylbenzene | ND | 1.0 | " | " | " | " | " |
| Xylenes, total | ND | 3.0 | " | " | " | " | " |

| | | | | | |
|----------------------------------|--------|--------|---|---|---|
| Surrogate: 1,2-Dichloroethane-d4 | 91.0 % | 70-130 | " | " | " |
| Surrogate: Toluene-d8 | 99.9 % | 70-130 | " | " | " |
| Surrogate: 4-Bromofluorobenzene | 105 % | 70-130 | " | " | " |

Origins Laboratory, Inc.



The results in this report apply to the samples analyzed in accordance with the chain of custody document. This analytical report must be reproduced in its entirety.

Noelle E Doyle, President

LT Environmental, Inc.
4600 West 60th Avenue
Arvada CO 80003

Chris Roy
Project Number: NEP0839
Project: Noble - Chestnut G 22-6

MW-11
3/18/2013 3:11:00PM

| Analyte | Result | Reporting Limit | Units | Dilution | Batch | Prepared | Analyzed | Notes |
|---------|--------|--------------------|-------|----------|-------|----------|----------|-------|
|---------|--------|--------------------|-------|----------|-------|----------|----------|-------|

Origins Laboratory, Inc.
X303111-08 (Water)

BTEX by EPA 8260C

| | | | | | | | |
|----------------|----|-----|------|---|---------|------------|------------|
| Benzene | ND | 1.0 | ug/L | 1 | 3C19009 | 03/19/2013 | 03/19/2013 |
| Toluene | ND | 1.0 | " | " | " | " | " |
| Ethylbenzene | ND | 1.0 | " | " | " | " | " |
| Xylenes, total | ND | 3.0 | " | " | " | " | " |

| | | | | | |
|----------------------------------|--------|--------|---|---|---|
| Surrogate: 1,2-Dichloroethane-d4 | 93.6 % | 70-130 | " | " | " |
| Surrogate: Toluene-d8 | 101 % | 70-130 | " | " | " |
| Surrogate: 4-Bromofluorobenzene | 104 % | 70-130 | " | " | " |

Origins Laboratory, Inc.



The results in this report apply to the samples analyzed in accordance with the chain of custody document. This analytical report must be reproduced in its entirety.

Noelle E Doyle, President

LT Environmental, Inc.
4600 West 60th Avenue
Arvada CO 80003

Chris Roy
Project Number: NEP0839
Project: Noble - Chestnut G 22-6

MW-12
3/18/2013 2:35:00PM

| Analyte | Result | Reporting Limit | Units | Dilution | Batch | Prepared | Analyzed | Notes |
|---------|--------|--------------------|-------|----------|-------|----------|----------|-------|
|---------|--------|--------------------|-------|----------|-------|----------|----------|-------|

Origins Laboratory, Inc.
X303111-09 (Water)

BTEX by EPA 8260C

| | | | | | | | |
|----------------|------|-----|------|---|---------|------------|------------|
| Benzene | ND | 1.0 | ug/L | 1 | 3C19009 | 03/19/2013 | 03/19/2013 |
| Toluene | ND | 1.0 | " | " | " | " | " |
| Ethylbenzene | 1.41 | 1.0 | " | " | " | " | " |
| Xylenes, total | ND | 3.0 | " | " | " | " | " |

| | | | | | | | |
|----------------------------------|--------|--------|--|--|---|---|---|
| Surrogate: 1,2-Dichloroethane-d4 | 92.8 % | 70-130 | | | " | " | " |
| Surrogate: Toluene-d8 | 99.6 % | 70-130 | | | " | " | " |
| Surrogate: 4-Bromofluorobenzene | 106 % | 70-130 | | | " | " | " |

Origins Laboratory, Inc.



Noelle E Doyle, President

The results in this report apply to the samples analyzed in accordance with the chain of custody document. This analytical report must be reproduced in its entirety.

LT Environmental, Inc.

4600 West 60th Avenue

Arvada CO 80003

Chris Roy

Project Number: NEP0839

Project: Noble - Chestnut G 22-6

MW-13

3/18/2013 2:30:00PM

| Analyte | Result | Reporting Limit | Units | Dilution | Batch | Prepared | Analyzed | Notes |
|---------|--------|-----------------|-------|----------|-------|----------|----------|-------|
|---------|--------|-----------------|-------|----------|-------|----------|----------|-------|

Origins Laboratory, Inc.
X303111-10 (Water)

BTEX by EPA 8260C

| | | | | | | | |
|----------------|----|-----|------|---|---------|------------|------------|
| Benzene | ND | 1.0 | ug/L | 1 | 3C19009 | 03/19/2013 | 03/19/2013 |
| Toluene | ND | 1.0 | " | " | " | " | " |
| Ethylbenzene | ND | 1.0 | " | " | " | " | " |
| Xylenes, total | ND | 3.0 | " | " | " | " | " |

| | | | | | | | |
|----------------------------------|--------|--------|--|--|---|---|---|
| Surrogate: 1,2-Dichloroethane-d4 | 93.2 % | 70-130 | | | " | " | " |
| Surrogate: Toluene-d8 | 103 % | 70-130 | | | " | " | " |
| Surrogate: 4-Bromofluorobenzene | 106 % | 70-130 | | | " | " | " |

Origins Laboratory, Inc.



The results in this report apply to the samples analyzed in accordance with the chain of custody document. This analytical report must be reproduced in its entirety.

Noelle E Doyle, President

LT Environmental, Inc.
4600 West 60th Avenue
Arvada CO 80003

Chris Roy
Project Number: NEP0839
Project: Noble - Chestnut G 22-6

MW-15
3/18/2013 2:40:00PM

| Analyte | Result | Reporting Limit | Units | Dilution | Batch | Prepared | Analyzed | Notes |
|---------|--------|--------------------|-------|----------|-------|----------|----------|-------|
|---------|--------|--------------------|-------|----------|-------|----------|----------|-------|

Origins Laboratory, Inc.
X303111-11 (Water)

BTEX by EPA 8260C

| | | | | | | | |
|----------------|------|-----|------|---|---------|------------|------------|
| Benzene | 36.9 | 1.0 | ug/L | 1 | 3C19009 | 03/19/2013 | 03/19/2013 |
| Toluene | ND | 1.0 | " | " | " | " | " |
| Ethylbenzene | 60.5 | 1.0 | " | " | " | " | " |
| Xylenes, total | 84.6 | 3.0 | " | " | " | " | " |

| | | | | | | | |
|----------------------------------|--------|--------|--|--|---|---|---|
| Surrogate: 1,2-Dichloroethane-d4 | 94.4 % | 70-130 | | | " | " | " |
| Surrogate: Toluene-d8 | 97.2 % | 70-130 | | | " | " | " |
| Surrogate: 4-Bromofluorobenzene | 106 % | 70-130 | | | " | " | " |

Origins Laboratory, Inc.



Noelle E Doyle, President

The results in this report apply to the samples analyzed in accordance with the chain of custody document. This analytical report must be reproduced in its entirety.

LT Environmental, Inc.

4600 West 60th Avenue

Arvada CO 80003

Chris Roy

Project Number: NEP0839

Project: Noble - Chestnut G 22-6

Volatile Organic Compounds by GC/MS SW846 8260C - Quality Control
Origins Laboratory, Inc.

| Analyte | Result | Reporting Limit | Units | Spike Level | Source Result | %REC | %REC Limits | RPD | RPD Limit | Notes |
|---------|--------|-----------------|-------|-------------|---------------|------|-------------|-----|-----------|-------|
|---------|--------|-----------------|-------|-------------|---------------|------|-------------|-----|-----------|-------|

Batch 3C19009 - EPA 5030B (Water)

Blank (3C19009-BLK1)

Prepared: 03/19/2013 Analyzed: 03/19/2013

| | | | | | | | | | | |
|----------------------------------|----|-----|------|------|------|--|--------|--|--|--|
| Benzene | ND | 1.0 | ug/L | | | | | | | |
| Toluene | ND | 1.0 | " | | | | | | | |
| Ethylbenzene | ND | 1.0 | " | | | | | | | |
| Xylenes, total | ND | 3.0 | " | | | | | | | |
| Surrogate: 1,2-Dichloroethane-d4 | 59 | | " | 62.5 | 94.4 | | 70-130 | | | |
| Surrogate: Toluene-d8 | 65 | | " | 62.5 | 104 | | 70-130 | | | |
| Surrogate: 4-Bromofluorobenzene | 65 | | " | 62.5 | 103 | | 70-130 | | | |

Origins Laboratory, Inc.



The results in this report apply to the samples analyzed in accordance with the chain of custody document. This analytical report must be reproduced in its entirety.

Noelle E Doyle, President

LT Environmental, Inc.

4600 West 60th Avenue

Arvada CO 80003

Chris Roy

Project Number: NEP0839

Project: Noble - Chestnut G 22-6

Volatile Organic Compounds by GC/MS SW846 8260C - Quality Control
Origins Laboratory, Inc.

| Analyte | Result | Reporting Limit | Units | Spike Level | Source Result | %REC | %REC Limits | RPD | RPD Limit | Notes |
|---------|--------|-----------------|-------|-------------|---------------|------|-------------|-----|-----------|-------|
|---------|--------|-----------------|-------|-------------|---------------|------|-------------|-----|-----------|-------|

Batch 3C19009 - EPA 5030B (Water)

LCS (3C19009-BS1)

Prepared: 03/19/2013 Analyzed: 03/19/2013

| | | | | | | | | | | |
|----------------------------------|------|-----|------|------|--|------|--------|--|--|--|
| Benzene | 17.5 | 1.0 | ug/L | 20.0 | | 87.4 | 70-130 | | | |
| Toluene | 18.2 | 1.0 | " | 20.0 | | 91.0 | 70-130 | | | |
| Ethylbenzene | 19.0 | 1.0 | " | 20.0 | | 94.8 | 70-130 | | | |
| m,p-Xylene | 38.2 | 2.0 | " | 40.0 | | 95.4 | 70-130 | | | |
| o-Xylene | 18.7 | 1.0 | " | 20.0 | | 93.7 | 70-130 | | | |
| Surrogate: 1,2-Dichloroethane-d4 | 55 | | " | 62.5 | | 88.0 | 70-130 | | | |
| Surrogate: Toluene-d8 | 63 | | " | 62.5 | | 101 | 70-130 | | | |
| Surrogate: 4-Bromofluorobenzene | 64 | | " | 62.5 | | 103 | 70-130 | | | |

Origins Laboratory, Inc.



The results in this report apply to the samples analyzed in accordance with the chain of custody document. This analytical report must be reproduced in its entirety.

Noelle E Doyle, President

LT Environmental, Inc.
4600 West 60th Avenue
Arvada CO 80003

Chris Roy
Project Number: NEP0839
Project: Noble - Chestnut G 22-6

Volatile Organic Compounds by GC/MS SW846 8260C - Quality Control
Origins Laboratory, Inc.

| Analyte | Result | Reporting Limit | Units | Spike Level | Source Result | %REC | %REC Limits | RPD | RPD Limit | Notes |
|---------|--------|-----------------|-------|-------------|---------------|------|-------------|-----|-----------|-------|
|---------|--------|-----------------|-------|-------------|---------------|------|-------------|-----|-----------|-------|

Batch 3C19009 - EPA 5030B (Water)

| Matrix Spike (3C19009-MS1) | | Source: X303111-05 | | | Prepared: 03/19/2013 Analyzed: 03/19/2013 | | | | | |
|----------------------------------|------|--------------------|------|------|---|------|--------|--|--|--|
| Benzene | 17.1 | 1.0 | ug/L | 20.0 | ND | 85.4 | 70-130 | | | |
| Toluene | 17.6 | 1.0 | " | 20.0 | ND | 88.2 | 70-130 | | | |
| Ethylbenzene | 22.3 | 1.0 | " | 20.0 | 2.8 | 97.4 | 70-130 | | | |
| m,p-Xylene | 47.8 | 2.0 | " | 40.0 | 8.8 | 97.6 | 70-130 | | | |
| o-Xylene | 18.8 | 1.0 | " | 20.0 | ND | 94.0 | 70-130 | | | |
| Surrogate: 1,2-Dichloroethane-d4 | 49 | | " | 62.5 | | 78.0 | 70-130 | | | |
| Surrogate: Toluene-d8 | 61 | | " | 62.5 | | 97.4 | 70-130 | | | |
| Surrogate: 4-Bromofluorobenzene | 62 | | " | 62.5 | | 98.5 | 70-130 | | | |

Origins Laboratory, Inc.



The results in this report apply to the samples analyzed in accordance with the chain of custody document. This analytical report must be reproduced in its entirety.

Noelle E Doyle, President

LT Environmental, Inc.

4600 West 60th Avenue

Arvada CO 80003

Chris Roy

Project Number: NEP0839

Project: Noble - Chestnut G 22-6

Volatile Organic Compounds by GC/MS SW846 8260C - Quality Control

Origins Laboratory, Inc.

| Analyte | Result | Reporting Limit | Units | Spike Level | Source Result | %REC | %REC Limits | RPD | RPD Limit | Notes |
|---------|--------|-----------------|-------|-------------|---------------|------|-------------|-----|-----------|-------|
|---------|--------|-----------------|-------|-------------|---------------|------|-------------|-----|-----------|-------|

Batch 3C19009 - EPA 5030B (Water)

| Matrix Spike Dup (3C19009-MSD1) | | Source: X303111-05 | | | Prepared: 03/19/2013 Analyzed: 03/19/2013 | | | | | |
|----------------------------------|------|--------------------|------|------|---|------|--------|-------|----|--|
| Benzene | 17.2 | 1.0 | ug/L | 20.0 | ND | 85.8 | 70-130 | 0.409 | 20 | |
| Toluene | 17.3 | 1.0 | " | 20.0 | ND | 86.6 | 70-130 | 1.72 | 20 | |
| Ethylbenzene | 21.4 | 1.0 | " | 20.0 | 2.8 | 92.6 | 70-130 | 4.35 | 20 | |
| m,p-Xylene | 46.2 | 2.0 | " | 40.0 | 8.8 | 93.6 | 70-130 | 3.34 | 20 | |
| o-Xylene | 18.9 | 1.0 | " | 20.0 | ND | 94.3 | 70-130 | 0.319 | 20 | |
| Surrogate: 1,2-Dichloroethane-d4 | 58 | | " | 62.5 | | 92.2 | 70-130 | | | |
| Surrogate: Toluene-d8 | 61 | | " | 62.5 | | 98.1 | 70-130 | | | |
| Surrogate: 4-Bromofluorobenzene | 64 | | " | 62.5 | | 103 | 70-130 | | | |

Origins Laboratory, Inc.



The results in this report apply to the samples analyzed in accordance with the chain of custody document. This analytical report must be reproduced in its entirety.

Noelle E Doyle, President

LT Environmental, Inc.

4600 West 60th Avenue

Arvada CO 80003

Chris Roy

Project Number: NEP0839

Project: Noble - Chestnut G 22-6

Notes and Definitions

ND Analyte NOT DETECTED at or above the reporting limit

RPD Relative Percent Difference

Origins Laboratory, Inc.



The results in this report apply to the samples analyzed in accordance with the chain of custody document. This analytical report must be reproduced in its entirety.

Noelle E Doyle, President



March 21, 2013

LT Environmental, Inc.

Rob Rebel

4600 West 60th Avenue

Arvada CO 80003

Project Name - Noble - Chestnut G 22-6

Project Number - NEP0839

Attached are you analytical results for Noble - Chestnut G 22-6 received by Origins Laboratory, Inc. March 19, 2013. This project is associated with Origins project number X303114-01.

The analytical results in the following report were analyzed under the guidelines of EPA Methods. These methods are identified as follows; "SW" are defined in SW-846, "EPA" are defined in 40CFR part 136 and "SM" are defined in the most current revision of Standard Methods For the Examination of Water and Wastewater.

The analytical results apply specifically to the samples and analyses specified per the attached Chain of Custody. As such, this report shall not be reproduced except in full, without the written approval of Origin's laboratory.

Unless otherwise noted, the analytical results for all soil samples are reported on a wet weight basis. All analytical analyses were performed under NELAP guidelines unless noted by a data qualifier.

Any holding time exceedances, deviations from the method specifications or deviations from Origins Laboratory's Standard Operating Procedures are outlined in the case narrative.

Thank you for selecting Origins for your analytical needs. Please contact us with any questions concerning this report, or if we can help with anything at all.

Origins Laboratory, Inc.
303.433.1322
o-squad@oelabinc.com



1725 Elk Place, Denver, CO 80211 | Phone: 303.433.1322 | Fax: 303.265.9645

LT Environmental, Inc.

4600 West 60th Avenue

Arvada CO 80003

Rob Rebel

Project Number: NEP0839

Project: Noble - Chestnut G 22-6

CROSS REFERENCE REPORT

| Sample ID | Laboratory ID | Matrix | Date Sampled | Date Received |
|-----------|---------------|--------|----------------------|------------------|
| MW-16R | X303114-01 | Water | March 19, 2013 15:02 | 03/19/2013 14:20 |
| MW-23R | X303114-02 | Water | March 19, 2013 14:54 | 03/19/2013 14:20 |

Origins Laboratory, Inc.



Noelle E Doyle, President

The results in this report apply to the samples analyzed in accordance with the chain of custody document. This analytical report must be reproduced in its entirety.

LT Environmental, Inc.
4600 West 60th Avenue
Arvada CO 80003

Rob Rebel
Project Number: NEP0839
Project: Noble - Chestnut G 22-6

www.originslaboratory.com

page 7 of 1

X303114

ORIGINS
LABORATORY, INC

Client: LTE
Address:
Project Manager: Rob Rebel
Project Name: Chestnut
Project Number:
Samples Collected By: D. H. S. J.

Telephone Number: 303-433-9788
Email Address: Noelle@Origins.com

1725 Elk Place | Denver, CO 80211 | Phone: 303.433.1322 | Fax: 303.265.9645

| Sample ID Description | Date Sampled | Time Sampled | # of Containers | Preservative | | | | Matrix | | | Analysis | Sample Instructions | |
|-----------------------|--------------|--------------|-----------------|--------------|-----|------------------|-------|-------------|------|-------------|----------|---------------------|-------|
| | | | | Unpreserved | HCl | HNO ₃ | Other | Groundwater | Soil | Air Summa # | | | Other |
| MW16R | 3/19/13 | 1507 | 2 | X | | | | X | | | | 1 | |
| MW23R | 3/19/13 | 1554 | 2 | X | | | | X | | | | 2 | |
| | | | | | | | | | | | | 3 | |
| | | | | | | | | | | | | 4 | |
| | | | | | | | | | | | | 5 | |
| | | | | | | | | | | | | 6 | |
| | | | | | | | | | | | | 7 | |
| | | | | | | | | | | | | 8 | |
| | | | | | | | | | | | | 9 | |
| | | | | | | | | | | | | 10 | |

| Relinquished By: | Date: | Time: | Received By: | Date: | Time: | Turnaround Time: |
|------------------|---------|-------|--------------|----------|-------|--|
| [Signature] | 3/19/13 | 1420 | [Signature] | 03-19-13 | 1420 | Same Day <input type="checkbox"/> 24 Hr <input type="checkbox"/> 48 Hr <input type="checkbox"/> 72 Hr <input type="checkbox"/> Standard <input checked="" type="checkbox"/> |

Origins Laboratory, Inc.

Noelle E Doyle

Noelle E Doyle, President

The results in this report apply to the samples analyzed in accordance with the chain of custody document. This analytical report must be reproduced in its entirety.

LT Environmental, Inc.
4600 West 60th Avenue
Arvada CO 80003

Rob Rebel
Project Number: NEP0839
Project: Noble - Chestnut G 22-6

Origins Laboratory

F-012207-01-R1
Effective Date: 01/09/12

Sample Receipt Checklist

Origins Work Order: X3B114

Client: LT

Client Project ID: Chestnut

Checklist Completed by: Joelle Smith

Shipped Via: H&D
(UPS, FedEx, Hand Delivered, Pick-up, etc.)

Date/time completed: 3/19/13 16:44

Airbill #: N/A

Matrix(s) Received: (Check all that apply): ☐ Soil/Solid ☒ Water ☐ Other: _____

Cooler Number/Temperature: 12-0 °C 1 °C 1 °C (Describe) _____ °C

Thermometer ID: TC02

| Requirement Description | Yes | No | N/A | Comments (if any) |
|---|-------------------------------------|-------------------------------------|--------------------------|--|
| If samples require cooling, was the temperature between 0°C to ≤ 6°C ⁽¹⁾ ? | <input checked="" type="checkbox"/> | <input type="checkbox"/> | <input type="checkbox"/> | |
| Is there ice present (document if blue ice is used) | <input checked="" type="checkbox"/> | <input type="checkbox"/> | <input type="checkbox"/> | |
| Are custody seals present on cooler? (if so, document in comments if they are signed and dated, broken or intact) | <input type="checkbox"/> | <input checked="" type="checkbox"/> | <input type="checkbox"/> | |
| Are custody seals present on each sample container? (if so, document in comments if they are signed and dated, broken or intact) | <input type="checkbox"/> | <input checked="" type="checkbox"/> | <input type="checkbox"/> | |
| Were all samples received intact ⁽¹⁾ ? | <input checked="" type="checkbox"/> | <input type="checkbox"/> | <input type="checkbox"/> | |
| Was adequate sample volume provided ⁽¹⁾ ? | <input checked="" type="checkbox"/> | <input type="checkbox"/> | <input type="checkbox"/> | |
| Are short holding time analytes or samples with HTs due within 48 hours present ⁽¹⁾ ? | <input type="checkbox"/> | <input checked="" type="checkbox"/> | <input type="checkbox"/> | |
| Is a chain-of-custody (COC) present and filled out completely ⁽¹⁾ ? | <input checked="" type="checkbox"/> | <input type="checkbox"/> | <input type="checkbox"/> | |
| Does the COC agree with the number and type of sample bottles received ⁽¹⁾ ? | <input checked="" type="checkbox"/> | <input type="checkbox"/> | <input type="checkbox"/> | |
| Do the sample IDs on the bottle labels match the COC ⁽¹⁾ ? | <input checked="" type="checkbox"/> | <input type="checkbox"/> | <input type="checkbox"/> | |
| Is the COC properly relinquished by the client with date and time recorded ⁽¹⁾ ? | <input checked="" type="checkbox"/> | <input type="checkbox"/> | <input type="checkbox"/> | |
| For volatiles in water – is there headspace (> ¼ inch bubble) present? If yes, contact client and note in narrative. | <input type="checkbox"/> | <input checked="" type="checkbox"/> | <input type="checkbox"/> | |
| Are samples preserved that require preservation and was it checked ⁽¹⁾ ? (note ID of confirmation instrument used in comments) / (preservation is not confirmed for subcontracted analyses in order to insure sample integrity)/(pH <2 for samples preserved with HNO ₃ , HCL, H ₂ SO ₄) / (pH >10 for samples preserved with Na ₂ AsO ₂ +NaOH, ZnAc+NaOH) | <input type="checkbox"/> | <input checked="" type="checkbox"/> | <input type="checkbox"/> | Samples will be analyzed within 7 Days of collection |
| Additional Comments (if any): | | | | |

⁽¹⁾If NO, then contact the client before proceeding with analysis and note date/time and person contacted as well as the corrective action to in the additional comments (above) and the case narrative.

Reviewed by (Project Manager)

03-21-13 1233
Date/Time Reviewed

Origins Laboratory, Inc.

Noelle E Doyle, President

The results in this report apply to the samples analyzed in accordance with the chain of custody document. This analytical report must be reproduced in its entirety.

LT Environmental, Inc.
4600 West 60th Avenue
Arvada CO 80003

Rob Rebel
Project Number: NEP0839
Project: Noble - Chestnut G 22-6

MW-16R**3/19/2013 3:02:00PM**

| Analyte | Result | Reporting | | Units | Dilution | Batch | Prepared | Analyzed | Notes |
|---------|--------|-----------|--|-------|----------|-------|----------|----------|-------|
| | | Limit | | | | | | | |

Origins Laboratory, Inc.
X303114-01 (Water)**BTEX by EPA 8260C**

| | | | | | | | |
|----------------|------|-----|------|---|---------|------------|------------|
| Benzene | 2.52 | 1.0 | ug/L | 1 | 3C19009 | 03/19/2013 | 03/19/2013 |
| Toluene | ND | 1.0 | " | " | " | " | " |
| Ethylbenzene | ND | 1.0 | " | " | " | " | " |
| Xylenes, total | ND | 3.0 | " | " | " | " | " |

| | | | | | |
|----------------------------------|--------|--------|---|---|---|
| Surrogate: 1,2-Dichloroethane-d4 | 92.7 % | 70-130 | " | " | " |
| Surrogate: Toluene-d8 | 97.2 % | 70-130 | " | " | " |
| Surrogate: 4-Bromofluorobenzene | 105 % | 70-130 | " | " | " |

Origins Laboratory, Inc.



Noelle E Doyle, President

The results in this report apply to the samples analyzed in accordance with the chain of custody document. This analytical report must be reproduced in its entirety.

LT Environmental, Inc.
4600 West 60th Avenue
Arvada CO 80003

Rob Rebel
Project Number: NEP0839
Project: Noble - Chestnut G 22-6

MW-23R

3/19/2013 2:54:00PM

| Analyte | Result | Reporting | | Units | Dilution | Batch | Prepared | Analyzed | Notes |
|---------|--------|-----------|--|-------|----------|-------|----------|----------|-------|
| | | Limit | | | | | | | |

Origins Laboratory, Inc.
X303114-02 (Water)

BTEX by EPA 8260C

| | | | | | | | |
|----------------|----|-----|------|---|---------|------------|------------|
| Benzene | ND | 1.0 | ug/L | 1 | 3C19009 | 03/19/2013 | 03/19/2013 |
| Toluene | ND | 1.0 | " | " | " | " | " |
| Ethylbenzene | ND | 1.0 | " | " | " | " | " |
| Xylenes, total | ND | 3.0 | " | " | " | " | " |

| | | | | | |
|----------------------------------|--------|--------|---|---|---|
| Surrogate: 1,2-Dichloroethane-d4 | 94.2 % | 70-130 | " | " | " |
| Surrogate: Toluene-d8 | 97.9 % | 70-130 | " | " | " |
| Surrogate: 4-Bromofluorobenzene | 103 % | 70-130 | " | " | " |

Origins Laboratory, Inc.



The results in this report apply to the samples analyzed in accordance with the chain of custody document. This analytical report must be reproduced in its entirety.

Noelle E Doyle, President

LT Environmental, Inc.

4600 West 60th Avenue

Arvada CO 80003

Rob Rebel

Project Number: NEP0839

Project: Noble - Chestnut G 22-6

Volatile Organic Compounds by GC/MS SW846 8260C - Quality Control
Origins Laboratory, Inc.

| Analyte | Result | Reporting Limit | Units | Spike Level | Source Result | %REC | %REC Limits | RPD | RPD Limit | Notes |
|---------|--------|-----------------|-------|-------------|---------------|------|-------------|-----|-----------|-------|
|---------|--------|-----------------|-------|-------------|---------------|------|-------------|-----|-----------|-------|

Batch 3C19009 - EPA 5030B (Water)

Blank (3C19009-BLK1)

Prepared: 03/19/2013 Analyzed: 03/19/2013

| | | | |
|----------------|----|-----|------|
| Benzene | ND | 1.0 | ug/L |
| Toluene | ND | 1.0 | " |
| Ethylbenzene | ND | 1.0 | " |
| Xylenes, total | ND | 3.0 | " |

| | | | | | |
|----------------------------------|----|---|------|------|--------|
| Surrogate: 1,2-Dichloroethane-d4 | 59 | " | 62.5 | 94.4 | 70-130 |
| Surrogate: Toluene-d8 | 65 | " | 62.5 | 104 | 70-130 |
| Surrogate: 4-Bromofluorobenzene | 65 | " | 62.5 | 103 | 70-130 |

Origins Laboratory, Inc.



The results in this report apply to the samples analyzed in accordance with the chain of custody document. This analytical report must be reproduced in its entirety.

Noelle E Doyle, President

LT Environmental, Inc.
4600 West 60th Avenue
Arvada CO 80003

Rob Rebel
Project Number: NEP0839
Project: Noble - Chestnut G 22-6

Volatile Organic Compounds by GC/MS SW846 8260C - Quality Control
Origins Laboratory, Inc.

| Analyte | Result | Reporting Limit | Units | Spike Level | Source Result | %REC | %REC Limits | RPD | RPD Limit | Notes |
|---------|--------|-----------------|-------|-------------|---------------|------|-------------|-----|-----------|-------|
|---------|--------|-----------------|-------|-------------|---------------|------|-------------|-----|-----------|-------|

Batch 3C19009 - EPA 5030B (Water)

LCS (3C19009-BS1)

Prepared: 03/19/2013 Analyzed: 03/19/2013

| | | | | | | |
|----------------------------------|------|-----|------|------|------|--------|
| Benzene | 17.5 | 1.0 | ug/L | 20.0 | 87.4 | 70-130 |
| Toluene | 18.2 | 1.0 | " | 20.0 | 91.0 | 70-130 |
| Ethylbenzene | 19.0 | 1.0 | " | 20.0 | 94.8 | 70-130 |
| m,p-Xylene | 38.2 | 2.0 | " | 40.0 | 95.4 | 70-130 |
| o-Xylene | 18.7 | 1.0 | " | 20.0 | 93.7 | 70-130 |
| Surrogate: 1,2-Dichloroethane-d4 | 55 | | " | 62.5 | 88.0 | 70-130 |
| Surrogate: Toluene-d8 | 63 | | " | 62.5 | 101 | 70-130 |
| Surrogate: 4-Bromofluorobenzene | 64 | | " | 62.5 | 103 | 70-130 |

Origins Laboratory, Inc.



Noelle E Doyle, President

The results in this report apply to the samples analyzed in accordance with the chain of custody document. This analytical report must be reproduced in its entirety.

LT Environmental, Inc.

4600 West 60th Avenue

Arvada CO 80003

Rob Rebel

Project Number: NEP0839

Project: Noble - Chestnut G 22-6

Volatile Organic Compounds by GC/MS SW846 8260C - Quality Control

Origins Laboratory, Inc.

| Analyte | Result | Reporting Limit | Units | Spike Level | Source Result | %REC | %REC Limits | RPD | RPD Limit | Notes |
|---------|--------|-----------------|-------|-------------|---------------|------|-------------|-----|-----------|-------|
|---------|--------|-----------------|-------|-------------|---------------|------|-------------|-----|-----------|-------|

Batch 3C19009 - EPA 5030B (Water)

| Matrix Spike (3C19009-MS1) | | Source: X303111-05 | | | Prepared: 03/19/2013 Analyzed: 03/19/2013 | | | | | |
|----------------------------------|------|--------------------|------|------|---|------|--------|--|--|--|
| Benzene | 17.1 | 1.0 | ug/L | 20.0 | ND | 85.4 | 70-130 | | | |
| Toluene | 17.6 | 1.0 | " | 20.0 | ND | 88.2 | 70-130 | | | |
| Ethylbenzene | 22.3 | 1.0 | " | 20.0 | 2.8 | 97.4 | 70-130 | | | |
| m,p-Xylene | 47.8 | 2.0 | " | 40.0 | 8.8 | 97.6 | 70-130 | | | |
| o-Xylene | 18.8 | 1.0 | " | 20.0 | ND | 94.0 | 70-130 | | | |
| Surrogate: 1,2-Dichloroethane-d4 | 49 | | " | 62.5 | | 78.0 | 70-130 | | | |
| Surrogate: Toluene-d8 | 61 | | " | 62.5 | | 97.4 | 70-130 | | | |
| Surrogate: 4-Bromofluorobenzene | 62 | | " | 62.5 | | 98.5 | 70-130 | | | |

Origins Laboratory, Inc.



The results in this report apply to the samples analyzed in accordance with the chain of custody document. This analytical report must be reproduced in its entirety.

Noelle E Doyle, President

LT Environmental, Inc.

4600 West 60th Avenue

Arvada CO 80003

Rob Rebel

Project Number: NEP0839

Project: Noble - Chestnut G 22-6

Volatile Organic Compounds by GC/MS SW846 8260C - Quality Control
Origins Laboratory, Inc.

| Analyte | Result | Reporting Limit | Units | Spike Level | Source Result | %REC | %REC Limits | RPD | RPD Limit | Notes |
|---------|--------|-----------------|-------|-------------|---------------|------|-------------|-----|-----------|-------|
|---------|--------|-----------------|-------|-------------|---------------|------|-------------|-----|-----------|-------|

Batch 3C19009 - EPA 5030B (Water)

| Matrix Spike Dup (3C19009-MSD1) | | Source: X303111-05 | | | Prepared: 03/19/2013 Analyzed: 03/19/2013 | | | | | |
|----------------------------------|------|--------------------|------|------|---|------|--------|-------|----|--|
| Benzene | 17.2 | 1.0 | ug/L | 20.0 | ND | 85.8 | 70-130 | 0.409 | 20 | |
| Toluene | 17.3 | 1.0 | " | 20.0 | ND | 86.6 | 70-130 | 1.72 | 20 | |
| Ethylbenzene | 21.4 | 1.0 | " | 20.0 | 2.8 | 92.6 | 70-130 | 4.35 | 20 | |
| m,p-Xylene | 46.2 | 2.0 | " | 40.0 | 8.8 | 93.6 | 70-130 | 3.34 | 20 | |
| o-Xylene | 18.9 | 1.0 | " | 20.0 | ND | 94.3 | 70-130 | 0.319 | 20 | |
| Surrogate: 1,2-Dichloroethane-d4 | 58 | | " | 62.5 | | 92.2 | 70-130 | | | |
| Surrogate: Toluene-d8 | 61 | | " | 62.5 | | 98.1 | 70-130 | | | |
| Surrogate: 4-Bromofluorobenzene | 64 | | " | 62.5 | | 103 | 70-130 | | | |

Origins Laboratory, Inc.



The results in this report apply to the samples analyzed in accordance with the chain of custody document. This analytical report must be reproduced in its entirety.

Noelle E Doyle, President

LT Environmental, Inc.

4600 West 60th Avenue

Arvada CO 80003

Rob Rebel

Project Number: NEP0839

Project: Noble - Chestnut G 22-6

Notes and Definitions

ND Analyte NOT DETECTED at or above the reporting limit

RPD Relative Percent Difference

Origins Laboratory, Inc.



The results in this report apply to the samples analyzed in accordance with the chain of custody document. This analytical report must be reproduced in its entirety.

Noelle E Doyle, President



March 28, 2013

LT Environmental, Inc.

Rob Rebel

4600 West 60th Avenue

Arvada CO 80003

Project Name - Noble - Chestnut G 22-6

Project Number - NEP0839

Attached are you analytical results for Noble - Chestnut G 22-6 received by Origins Laboratory, Inc. March 22, 2013. This project is associated with Origins project number X303145-01.

The analytical results in the following report were analyzed under the guidelines of EPA Methods. These methods are identified as follows; "SW" are defined in SW-846, "EPA" are defined in 40CFR part 136 and "SM" are defined in the most current revision of Standard Methods For the Examination of Water and Wastewater.

The analytical results apply specifically to the samples and analyses specified per the attached Chain of Custody. As such, this report shall not be reproduced except in full, without the written approval of Origin's laboratory.

Unless otherwise noted, the analytical results for all soil samples are reported on a wet weight basis. All analytical analyses were performed under NELAP guidelines unless noted by a data qualifier.

Any holding time exceedances, deviations from the method specifications or deviations from Origins Laboratory's Standard Operating Procedures are outlined in the case narrative.

Thank you for selecting Origins for your analytical needs. Please contact us with any questions concerning this report, or if we can help with anything at all.

Origins Laboratory, Inc.
303.433.1322
o-squad@oelabinc.com



1725 Elk Place, Denver, CO 80211 | Phone: 303.433.1322 | Fax: 303.265.9645

LT Environmental, Inc.
4600 West 60th Avenue
Arvada CO 80003

Rob Rebel
Project Number: NEP0839
Project: Noble - Chestnut G 22-6

CROSS REFERENCE REPORT

| Sample ID | Laboratory ID | Matrix | Date Sampled | Date Received |
|-----------|---------------|--------|----------------------|------------------|
| MW-1R | X303145-01 | Water | March 22, 2013 14:00 | 03/22/2013 16:47 |
| MW-8R | X303145-02 | Water | March 22, 2013 14:10 | 03/22/2013 16:47 |
| MW-9R | X303145-03 | Water | March 22, 2013 14:20 | 03/22/2013 16:47 |
| MW-17R | X303145-04 | Water | March 22, 2013 14:30 | 03/22/2013 16:47 |

Origins Laboratory, Inc.



Noelle E Doyle, President

The results in this report apply to the samples analyzed in accordance with the chain of custody document. This analytical report must be reproduced in its entirety.

Rob Rebel
Project Number: NEP0839
Project: Noble - Chestnut G 22-6

ORIGINS

LABORATORY, INC

www.originslaboratory.com

Client:

LEE

Address:

4600 W. 60th Ave.

Telephone Number:

303-433-9788

Email Address:

Kobel@tenv.com

Project Manager:

Robo Kobel

Project Name:

Chesnut

Project Number:

NEP0839

Samples Collected By:

Ryan Kitzberger

X303145

page 1 of 1

| Sample ID Description | Date Sampled | Time Sampled | # of Containers | Preservative | | | | Matrix | | | Analysis | Sample Instructions | |
|-----------------------|---------------|--------------|--------------------------|--------------|-----|------------------|-------|-------------|------|-------------|---|---------------------|-------|
| | | | | Unpreserved | HCl | HNO ₃ | Other | Groundwater | Soil | Air Summa # | | | Other |
| MW01R | 3/22/13 | 1400 | 3 X | | | | | X | | | X | 1 | |
| MW08R | 3/22/13 | 1410 | 3 X | | | | | X | | | X | 2 | |
| MW09R | 3/22/13 | 1420 | 3 X | | | | | X | | | X | 3 | |
| MW17R | 3/22/13 | 1430 | 3 X | | | | | X | | | X | 4 | |
| | | | | | | | | | | | | 5 | |
| | | | | | | | | | | | | 6 | |
| | | | | | | | | | | | | 7 | |
| | | | | | | | | | | | | 8 | |
| | | | | | | | | | | | | 9 | |
| | | | | | | | | | | | | 10 | |
| Relinquished By: | Date: 3/22/13 | Time: 16:41 | Received By: | | | | Time: | | | Date: | Turnaround Time: | | |
| Ryan K | | | Received By: [Signature] | | | | Time: | | | Date: | Same Day <input type="checkbox"/> 24 Hr <input type="checkbox"/> 48 Hr <input type="checkbox"/> 72 Hr <input type="checkbox"/> Standard <input checked="" type="checkbox"/> | | |

Origins Laboratory, Inc.

Naule G.

Noelle E Doyle, President

The results in this report apply to the samples analyzed in accordance with the chain of custody document. This analytical report must be reproduced in its entirety.

LT Environmental, Inc.
4600 West 60th Avenue
Arvada CO 80003

Rob Rebel
Project Number: NEP0839
Project: Noble - Chestnut G 22-6

Origins Laboratory F-012207-01-R1
Effective Date: 01/09/12

Sample Receipt Checklist

Origins Work Order: X303145 Client: LTE
Client Project ID: Chestnut

Checklist Completed by: Jesse Smith Shipped Via: H/D
(UPS, FedEx, Hand Delivered, Pick-up, etc.)
Date/time completed: 3/25/13 9:05 Airbill #: N/A

Matrix(s) Received: (Check all that apply): Soil/Solid ☒ Water ☐ Other: ☐ (Describe)

Cooler Number/Temperature: 1 13.2 °C 1 °C 1 °C 1 °C

Thermometer ID: T200

| Requirement Description | Yes | No | N/A | Comments (if any) |
|---|-------------------------------------|-------------------------------------|-----|--|
| If samples require cooling, was the temperature between 0°C to ≤ 6°C ⁽¹⁾ ? | <input checked="" type="checkbox"/> | | | |
| Is there ice present (document if blue ice is used) | <input checked="" type="checkbox"/> | | | |
| Are custody seals present on cooler? (if so, document in comments if they are signed and dated, broken or intact) | | <input checked="" type="checkbox"/> | | |
| Are custody seals present on each sample container? (if so, document in comments if they are signed and dated, broken or intact) | | <input checked="" type="checkbox"/> | | |
| Were all samples received intact ⁽¹⁾ ? | <input checked="" type="checkbox"/> | | | |
| Was adequate sample volume provided ⁽¹⁾ ? | <input checked="" type="checkbox"/> | | | |
| Are short holding time analytes or samples with HTs due within 48 hours present ⁽¹⁾ ? | | <input checked="" type="checkbox"/> | | |
| Is a chain-of-custody (COC) present and filled out completely ⁽¹⁾ ? | <input checked="" type="checkbox"/> | | | |
| Does the COC agree with the number and type of sample bottles received ⁽¹⁾ ? | <input checked="" type="checkbox"/> | | | |
| Do the sample IDs on the bottle labels match the COC ⁽¹⁾ ? | <input checked="" type="checkbox"/> | | | |
| Is the COC properly relinquished by the client with date and time recorded ⁽¹⁾ ? | <input checked="" type="checkbox"/> | | | |
| For volatiles in water – is there headspace (> ¼ inch bubble) present? If yes, contact client and note in narrative. | | <input checked="" type="checkbox"/> | | |
| Are samples preserved that require preservation and was it checked ⁽¹⁾ ? (note ID of confirmation instrument used in comments) / (preservation is not confirmed for subcontracted analyses in order to insure sample integrity)/(pH <2 for samples preserved with HNO ₃ , HCL, H ₂ SO ₄) / (pH >10 for samples preserved with NaAsO ₂ +NaOH, ZnAc+NaOH) | | <input checked="" type="checkbox"/> | | Samples will be analyzed within 7 Days of collection |
| Additional Comments (if any): | | | | |

⁽¹⁾If NO, then contact the client before proceeding with analysis and note date/time and person contacted as well as the corrective action to in the additional comments (above) and the case narrative.

Reviewed by (Project Manager) Jesse Smith Date/Time Reviewed 3/26/13 10:01

Origins Laboratory, Inc.

Noelle E Doyle, President

The results in this report apply to the samples analyzed in accordance with the chain of custody document. This analytical report must be reproduced in its entirety.

LT Environmental, Inc.
4600 West 60th Avenue
Arvada CO 80003

Rob Rebel
Project Number: NEP0839
Project: Noble - Chestnut G 22-6

MW-1R

3/22/2013 2:00:00PM

| Analyte | Result | Reporting | | Units | Dilution | Batch | Prepared | Analyzed | Notes |
|---------|--------|-----------|--|-------|----------|-------|----------|----------|-------|
| | | Limit | | | | | | | |

Origins Laboratory, Inc.
X303145-01 (Water)

BTEX by EPA 8260C

| | | | | | | | |
|----------------|------|-----|------|---|---------|------------|------------|
| Benzene | ND | 1.0 | ug/L | 1 | 3C26007 | 03/26/2013 | 03/27/2013 |
| Toluene | ND | 1.0 | " | " | " | " | " |
| Ethylbenzene | ND | 1.0 | " | " | " | " | " |
| Xylenes, total | 2.89 | 1.0 | " | " | " | " | " |

| | | | | | | | |
|----------------------------------|--------|--------|--|--|---|---|---|
| Surrogate: 1,2-Dichloroethane-d4 | 103 % | 70-130 | | | " | " | " |
| Surrogate: Toluene-d8 | 99.2 % | 70-130 | | | " | " | " |
| Surrogate: 4-Bromofluorobenzene | 99.4 % | 70-130 | | | " | " | " |

Origins Laboratory, Inc.



The results in this report apply to the samples analyzed in accordance with the chain of custody document. This analytical report must be reproduced in its entirety.

Noelle E Doyle, President

LT Environmental, Inc.

4600 West 60th Avenue

Arvada CO 80003

Rob Rebel

Project Number: NEP0839

Project: Noble - Chestnut G 22-6

MW-8R

3/22/2013 2:10:00PM

| Analyte | Result | Reporting | | Units | Dilution | Batch | Prepared | Analyzed | Notes |
|---------|--------|-----------|--|-------|----------|-------|----------|----------|-------|
| | | Limit | | | | | | | |

Origins Laboratory, Inc.
X303145-02 (Water)

BTEX by EPA 8260C

| | | | | | | | |
|----------------|------|-----|------|---|---------|------------|------------|
| Benzene | ND | 1.0 | ug/L | 1 | 3C26007 | 03/26/2013 | 03/27/2013 |
| Toluene | ND | 1.0 | " | " | " | " | " |
| Ethylbenzene | 8.47 | 1.0 | " | " | " | " | " |
| Xylenes, total | 103 | 1.0 | " | " | " | " | " |

Surrogate: 1,2-Dichloroethane-d4

105 % 70-130

"

"

"

Surrogate: Toluene-d8

102 % 70-130

"

"

"

Surrogate: 4-Bromofluorobenzene

101 % 70-130

"

"

"

Origins Laboratory, Inc.



The results in this report apply to the samples analyzed in accordance with the chain of custody document. This analytical report must be reproduced in its entirety.

Noelle E Doyle, President

LT Environmental, Inc.
4600 West 60th Avenue
Arvada CO 80003

Rob Rebel
Project Number: NEP0839
Project: Noble - Chestnut G 22-6

MW-9R

3/22/2013 2:20:00PM

| Analyte | Result | Reporting | | Units | Dilution | Batch | Prepared | Analyzed | Notes |
|---------|--------|-----------|--|-------|----------|-------|----------|----------|-------|
| | | Limit | | | | | | | |

Origins Laboratory, Inc.
X303145-03 (Water)

BTEX by EPA 8260C

| | | | | | | | |
|----------------|----|-----|------|---|---------|------------|------------|
| Benzene | ND | 1.0 | ug/L | 1 | 3C26007 | 03/26/2013 | 03/27/2013 |
| Toluene | ND | 1.0 | " | " | " | " | " |
| Ethylbenzene | ND | 1.0 | " | " | " | " | " |
| Xylenes, total | ND | 1.0 | " | " | " | " | " |

| | | | | | | | |
|----------------------------------|-------|--------|--|--|---|---|---|
| Surrogate: 1,2-Dichloroethane-d4 | 102 % | 70-130 | | | " | " | " |
| Surrogate: Toluene-d8 | 101 % | 70-130 | | | " | " | " |
| Surrogate: 4-Bromofluorobenzene | 100 % | 70-130 | | | " | " | " |

Origins Laboratory, Inc.



Noelle E Doyle, President

The results in this report apply to the samples analyzed in accordance with the chain of custody document. This analytical report must be reproduced in its entirety.

LT Environmental, Inc.
4600 West 60th Avenue
Arvada CO 80003

Rob Rebel
Project Number: NEP0839
Project: Noble - Chestnut G 22-6

MW-17R

3/22/2013 2:30:00PM

| Analyte | Result | Reporting | | Units | Dilution | Batch | Prepared | Analyzed | Notes |
|---------|--------|-----------|--|-------|----------|-------|----------|----------|-------|
| | | Limit | | | | | | | |

Origins Laboratory, Inc.
X303145-04 (Water)

BTEX by EPA 8260C

| | | | | | | | |
|----------------|------|------|------|----|---------|------------|------------|
| Benzene | 51.4 | 1.0 | ug/L | 1 | 3C26007 | 03/26/2013 | 03/27/2013 |
| Toluene | ND | 1.0 | " | " | " | " | " |
| Ethylbenzene | 158 | 1.0 | " | " | " | " | " |
| Xylenes, total | 1460 | 10.0 | " | 10 | " | " | " |

| | | | | | |
|----------------------------------|--------|--------|---|---|---|
| Surrogate: 1,2-Dichloroethane-d4 | 100 % | 70-130 | " | " | " |
| Surrogate: Toluene-d8 | 102 % | 70-130 | " | " | " |
| Surrogate: 4-Bromofluorobenzene | 98.5 % | 70-130 | " | " | " |

Origins Laboratory, Inc.



Noelle E Doyle, President

The results in this report apply to the samples analyzed in accordance with the chain of custody document. This analytical report must be reproduced in its entirety.

LT Environmental, Inc.
4600 West 60th Avenue
Arvada CO 80003

Rob Rebel
Project Number: NEP0839
Project: Noble - Chestnut G 22-6

Volatile Organic Compounds by GC/MS SW846 8260C - Quality Control
Origins Laboratory, Inc.

| Analyte | Result | Reporting Limit | Units | Spike Level | Source Result | %REC | %REC Limits | RPD | RPD Limit | Notes |
|---------|--------|-----------------|-------|-------------|---------------|------|-------------|-----|-----------|-------|
|---------|--------|-----------------|-------|-------------|---------------|------|-------------|-----|-----------|-------|

Batch 3C26007 - EPA 5030B (Water)

Blank (3C26007-BLK1)

Prepared: 03/26/2013 Analyzed: 03/26/2013

| | | | | | | | | | | |
|----------------------------------|----|-----|------|------|-----|--|--------|--|--|--|
| Benzene | ND | 1.0 | ug/L | | | | | | | |
| Toluene | ND | 1.0 | " | | | | | | | |
| Ethylbenzene | ND | 1.0 | " | | | | | | | |
| Xylenes, total | ND | 1.0 | " | | | | | | | |
| Surrogate: 1,2-Dichloroethane-d4 | 63 | | " | 62.5 | 101 | | 70-130 | | | |
| Surrogate: Toluene-d8 | 63 | | " | 62.5 | 100 | | 70-130 | | | |
| Surrogate: 4-Bromofluorobenzene | 63 | | " | 62.5 | 100 | | 70-130 | | | |

Origins Laboratory, Inc.



The results in this report apply to the samples analyzed in accordance with the chain of custody document. This analytical report must be reproduced in its entirety.

Noelle E Doyle, President

LT Environmental, Inc.

4600 West 60th Avenue

Arvada CO 80003

Rob Rebel

Project Number: NEP0839

Project: Noble - Chestnut G 22-6

Volatile Organic Compounds by GC/MS SW846 8260C - Quality Control
Origins Laboratory, Inc.

| Analyte | Result | Reporting Limit | Units | Spike Level | Source Result | %REC | %REC Limits | RPD | RPD Limit | Notes |
|---------|--------|-----------------|-------|-------------|---------------|------|-------------|-----|-----------|-------|
|---------|--------|-----------------|-------|-------------|---------------|------|-------------|-----|-----------|-------|

Batch 3C26007 - EPA 5030B (Water)

LCS (3C26007-BS1)

Prepared: 03/26/2013 Analyzed: 03/26/2013

| | | | | | | | | | | |
|----------------------------------|-----|-----|------|------|--|------|--------|--|--|--|
| Benzene | 106 | 1.0 | ug/L | 100 | | 106 | 70-130 | | | |
| Toluene | 110 | 1.0 | " | 100 | | 110 | 70-130 | | | |
| Ethylbenzene | 119 | 1.0 | " | 100 | | 119 | 70-130 | | | |
| m,p-Xylene | 240 | 2.0 | " | 200 | | 120 | 70-130 | | | |
| o-Xylene | 114 | 1.0 | " | 100 | | 114 | 70-130 | | | |
| Surrogate: 1,2-Dichloroethane-d4 | 59 | | " | 62.5 | | 94.4 | 70-130 | | | |
| Surrogate: Toluene-d8 | 63 | | " | 62.5 | | 101 | 70-130 | | | |
| Surrogate: 4-Bromofluorobenzene | 62 | | " | 62.5 | | 99.5 | 70-130 | | | |

Origins Laboratory, Inc.



The results in this report apply to the samples analyzed in accordance with the chain of custody document. This analytical report must be reproduced in its entirety.

Noelle E Doyle, President

LT Environmental, Inc.

4600 West 60th Avenue

Arvada CO 80003

Rob Rebel

Project Number: NEP0839

Project: Noble - Chestnut G 22-6

Volatile Organic Compounds by GC/MS SW846 8260C - Quality Control
Origins Laboratory, Inc.

| Analyte | Result | Reporting Limit | Units | Spike Level | Source Result | %REC | %REC Limits | RPD | RPD Limit | Notes |
|---------|--------|-----------------|-------|-------------|---------------|------|-------------|-----|-----------|-------|
|---------|--------|-----------------|-------|-------------|---------------|------|-------------|-----|-----------|-------|

Batch 3C26007 - EPA 5030B (Water)

| Matrix Spike (3C26007-MS1) | | Source: X303140-01 | | | Prepared: 03/26/2013 Analyzed: 03/26/2013 | | | | | |
|----------------------------------|-----|--------------------|------|------|---|------|--------|--|--|--|
| Benzene | 106 | 1.0 | ug/L | 100 | ND | 106 | 70-130 | | | |
| Toluene | 110 | 1.0 | " | 100 | ND | 110 | 70-130 | | | |
| Ethylbenzene | 118 | 1.0 | " | 100 | ND | 118 | 70-130 | | | |
| m,p-Xylene | 237 | 2.0 | " | 200 | ND | 119 | 70-130 | | | |
| o-Xylene | 112 | 1.0 | " | 100 | ND | 112 | 70-130 | | | |
| Surrogate: 1,2-Dichloroethane-d4 | 59 | | " | 62.5 | | 94.8 | 70-130 | | | |
| Surrogate: Toluene-d8 | 62 | | " | 62.5 | | 99.6 | 70-130 | | | |
| Surrogate: 4-Bromofluorobenzene | 63 | | " | 62.5 | | 101 | 70-130 | | | |

Origins Laboratory, Inc.



The results in this report apply to the samples analyzed in accordance with the chain of custody document. This analytical report must be reproduced in its entirety.

Noelle E Doyle, President

LT Environmental, Inc.

4600 West 60th Avenue

Arvada CO 80003

Rob Rebel

Project Number: NEP0839

Project: Noble - Chestnut G 22-6

Volatile Organic Compounds by GC/MS SW846 8260C - Quality Control

Origins Laboratory, Inc.

| Analyte | Result | Reporting Limit | Units | Spike Level | Source Result | %REC | %REC Limits | RPD | RPD Limit | Notes |
|---------|--------|-----------------|-------|-------------|---------------|------|-------------|-----|-----------|-------|
|---------|--------|-----------------|-------|-------------|---------------|------|-------------|-----|-----------|-------|

Batch 3C26007 - EPA 5030B (Water)

| Matrix Spike Dup (3C26007-MSD1) | | Source: X303140-01 | | | Prepared: 03/26/2013 Analyzed: 03/26/2013 | | | | | |
|----------------------------------|-----|--------------------|------|------|---|------|--------|------|----|--|
| Benzene | 103 | 1.0 | ug/L | 100 | ND | 103 | 70-130 | 2.29 | 20 | |
| Toluene | 106 | 1.0 | " | 100 | ND | 106 | 70-130 | 3.18 | 20 | |
| Ethylbenzene | 115 | 1.0 | " | 100 | ND | 115 | 70-130 | 3.14 | 20 | |
| m,p-Xylene | 229 | 2.0 | " | 200 | ND | 114 | 70-130 | 3.61 | 20 | |
| o-Xylene | 108 | 1.0 | " | 100 | ND | 108 | 70-130 | 3.60 | 20 | |
| Surrogate: 1,2-Dichloroethane-d4 | 60 | | " | 62.5 | | 95.4 | 70-130 | | | |
| Surrogate: Toluene-d8 | 62 | | " | 62.5 | | 99.6 | 70-130 | | | |
| Surrogate: 4-Bromofluorobenzene | 62 | | " | 62.5 | | 98.5 | 70-130 | | | |

Origins Laboratory, Inc.



The results in this report apply to the samples analyzed in accordance with the chain of custody document. This analytical report must be reproduced in its entirety.

Noelle E Doyle, President

LT Environmental, Inc.

4600 West 60th Avenue

Arvada CO 80003

Rob Rebel

Project Number: NEP0839

Project: Noble - Chestnut G 22-6

Notes and Definitions

ND Analyte NOT DETECTED at or above the reporting limit

RPD Relative Percent Difference

Origins Laboratory, Inc.



The results in this report apply to the samples analyzed in accordance with the chain of custody document. This analytical report must be reproduced in its entirety.

Noelle E Doyle, President