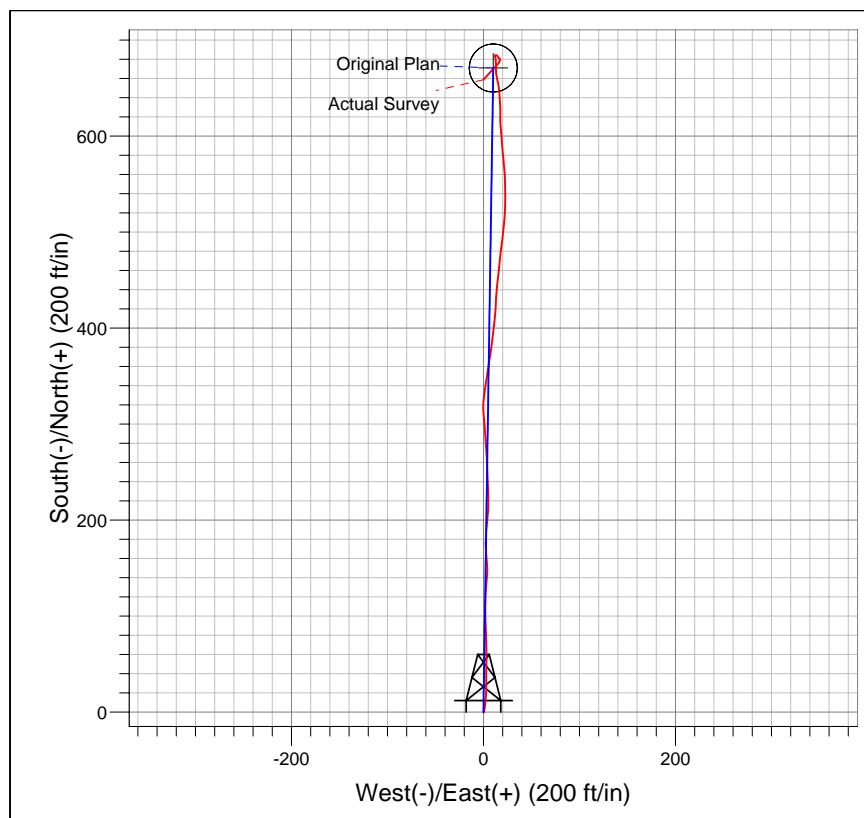
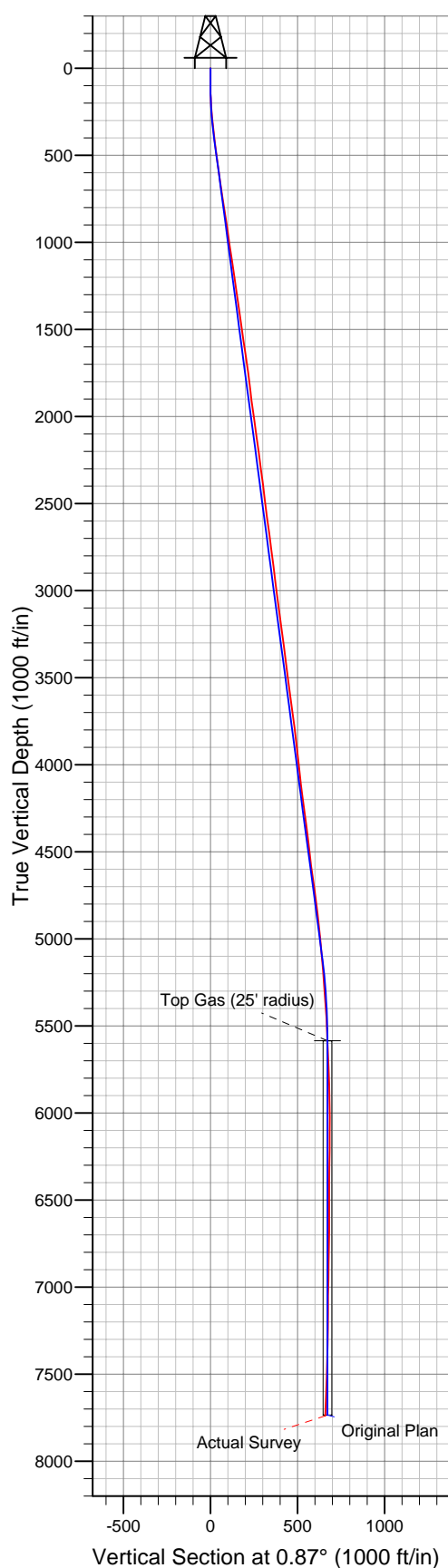




Well Name: PA 331-35  
 Surface Location: GV 56-35 Pad (Cyclone 1)  
 NAD 1927 (NADCON CONUS) US State Plane 1927 (Exact solution) Colorado Central 502  
 Ground Elevation: 5149.0  

+N/-S	+E/-W	Northing	Easting	Latitude	Longitude	Slot
0.0	0.0	611347.2230	4995.239	29° 9.925' 07"	107° 57' 45.740 W	



**M** Azimuths to True North  
 Magnetic North: 11.05°  
 Magnetic Field  
 Strength: 52838.6nT  
 Dip Angle: 65.89°  
 Date: 10/26/2005  
 Model: IGRF2005-10