
WPX ENERGY ROCKY MOUNTAIN LLC-EBUS

**PA 443-5
PARACHUTE
Garfield County , Colorado**

Cement Surface Casing
20-Dec-2012

Post Job Report

The Road to Excellence Starts with Safety

Sold To #: 300721	Ship To #: 2966371	Quote #:	Sales Order #: 900033948
Customer: WPX ENERGY ROCKY MOUNTAIN LLC-EBUS	Customer Rep: Towers, Ron		
Well Name: PA	Well #: 443-5	API/UWI #: 05-045-20059	
Field: PARACHUTE	City (SAP): PARACHUTE	County/Parish: Garfield	State: Colorado
Lat: N 39.463 deg. OR N 39 deg. 27 min. 48.413 secs.	Long: W 108.007 deg. OR W -109 deg. 59 min. 35.214 secs.		
Contractor: NABORS 577	Rig/Platform Name/Num: NABORS 577		
Job Purpose: Cement Surface Casing			
Well Type: Development Well	Job Type: Cement Surface Casing		
Sales Person: MAYO, MARK	Srv Supervisor: SLAUGHTER, JESSE	MBU ID Emp #: 454315	

Job Personnel

HES Emp Name	Exp Hrs	Emp #	HES Emp Name	Exp Hrs	Emp #	HES Emp Name	Exp Hrs	Emp #
BURKE, BRENDAN Patrick	10	487782	HYDE, DUSTIN C	10	453940	KAMMEIER, CHRISTOPHER Michael	10	524554
SLAUGHTER, JESSE Dean	10	454315						

Equipment

HES Unit #	Distance-1 way	HES Unit #	Distance-1 way	HES Unit #	Distance-1 way	HES Unit #	Distance-1 way
10867423	60 mile	10872429	60 mile	11259881	60 mile	11562538	60 mile
11808847	60 mile						

Job Hours

Date	On Location Hours	Operating Hours	Date	On Location Hours	Operating Hours	Date	On Location Hours	Operating Hours
12-20-2012	9.5	3.5	12-21-2012	.5	.5			

TOTAL	Total is the sum of each column separately							
-------	--	--	--	--	--	--	--	--

Job

Formation Name	Formation Depth (MD)	Top	Bottom	Form Type	Job depth MD	Job Depth TVD	Water Depth	Perforation Depth (MD)	From	To	Deparated Loc
				BHST	1305. ft	1305. ft					

Well Data

Description	New / Used	Max pressure psig	Size in	ID in	Weight lbm/ft	Thread	Grade	Top MD ft	Bottom MD ft	Top TVD ft	Bottom TVD ft
-------------	------------	-------------------	---------	-------	---------------	--------	-------	-----------	--------------	------------	---------------

Sales/Rental/3rd Party (HES)

Description	Qty	Qty uom	Depth	Supplier
PLUG,CMTG,TOP,9 5/8,HWE,8.16 MIN/9.06 MA	1	EA		

Tools and Accessories

Type	Size	Qty	Make	Depth	Type	Size	Qty	Make	Depth	Type	Size	Qty	Make
Guide Shoe					Packer					Top Plug	9.625	1	HES
Float Shoe					Bridge Plug					Bottom Plug			
Float Collar					Retainer					SSR plug set			
Insert Float										Plug Container	9.625	1	HES
Stage Tool										Centralizers			

Miscellaneous Materials

Gelling Agt	Conc	Surfactant	Conc	Acid Type	Qty	Conc	%
Treatment Fld	Conc	Inhibitor	Conc	Sand Type	Size	Qty	

Fluid Data

Stage/Plug #: 1									
Fluid #	Stage Type	Fluid Name	Qty	Qty uom	Mixing Density lbm/gal	Yield ft3/sk	Mix Fluid Gal/sk	Rate bbl/min	Total Mix Fluid Gal/sk

1	Water Spacer	FRESH WATER	20.00	bbl	8.33	.0	.0	4	
2	Lead Cement	VERSACEM (TM) SYSTEM (452010)	170.0	sacks	12.3	2.38	13.75	6	13.75
3	Tail Cement	VERSACEM (TM) SYSTEM (452010)	160.0	sacks	12.8	2.11	11.75	6	11.75
4	Displacement	FRESH WATER	99.2	bbl	8.33	.0	.0	10	
Calculated Values			Pressures		Volumes				
Displacement	99.2	Shut In: Instant		Lost Returns	NO	Cement Slurry	132	Pad	
Top Of Cement	SURFACE	5 Min		Cement Returns	30	Actual Displacement	99.2	Treatment	
Frac Gradient		15 Min		Spacers	20	Load and Breakdown		Total Job	251
Rates									
Circulating		Mixing	6	Displacement	10	Avg. Job	8		
Cement Left In Pipe	Amount	0 ft	Reason	Shoe Joint					
Frac Ring # 1 @	ID	Frac ring # 2 @	ID	Frac Ring # 3 @	ID	Frac Ring # 4 @	ID		
The Information Stated Herein Is Correct				Customer Representative Signature					

The Road to Excellence Starts with Safety

Sold To #: 300721		Ship To #: 2966371		Quote #:		Sales Order #: 900033948	
Customer: WPX ENERGY ROCKY MOUNTAIN LLC-EBUS				Customer Rep: Towers, Ron			
Well Name: PA			Well #: 443-5			API/UWI #: 05-045-20059	
Field: PARACHUTE		City (SAP): PARACHUTE		County/Parish: Garfield		State: Colorado	
Legal Description:							
Lat: N 39.463 deg. OR N 39 deg. 27 min. 48.413 secs.				Long: W 108.007 deg. OR W -109 deg. 59 min. 35.214 secs.			
Contractor: NABORS 577			Rig/Platform Name/Num: NABORS 577				
Job Purpose: Cement Surface Casing						Ticket Amount:	
Well Type: Development Well			Job Type: Cement Surface Casing				
Sales Person: MAYO, MARK			Srvc Supervisor: SLAUGHTER, JESSE			MBU ID Emp #: 454315	

Activity Description	Date/Time	Cht #	Rate bbl/min	Volume bbl		Pressure psig		Comments
				Stage	Total	Tubing	Casing	
Call Out	12/20/2012 11:00							TD 1315 FT, TP 1305 FT, SHOE 44 FT, CSG 9 5/8 IN 32.3 LB/FT, HOLE 13 1/2 IN, MUD WT 9.3 PPG 80 VISC
Pre-Convoy Safety Meeting	12/20/2012 12:50							WITH ALL HES PERSONNEL
Crew Leave Yard	12/20/2012 13:00							
Arrive At Loc	12/20/2012 14:30							RIG WAS PULLING DRILL PIPE UPON HES ARRIVAL
Assessment Of Location Safety Meeting	12/20/2012 19:00							WITH ALL HES PERSONNEL
Other	12/20/2012 19:10							SPOT EQUIPMENT
Pre-Rig Up Safety Meeting	12/20/2012 19:20							WITH ALL HES PERSONNEL
Rig-Up Equipment	12/20/2012 19:30							
Pre-Job Safety Meeting	12/20/2012 21:00							WITH ALL PERSONNEL ON LOCATION
Start Job	12/20/2012 21:22							
Other	12/20/2012 21:22		2	2			94.0	FILL LINES WITH FRESH WATER
Test Lines	12/20/2012 21:26							TESTED LINES TO 3560 PSI PRESSURE HOLDING
Pump Spacer 1	12/20/2012 21:31		4	20			151.0	FRESH WATER
Pump Lead Cement	12/20/2012 21:45		6	72.1			225.0	170 SKS AT 12.3 PPG, 2.38 FT3/SK, 13.75 GAL/SK
Activity Description	Date/Time	Cht	Rate bbl/min	Volume bbl		Pressure psig		Comments

Sold To # : 300721

Ship To # :2966371

Quote # :

Sales Order # : 900033948

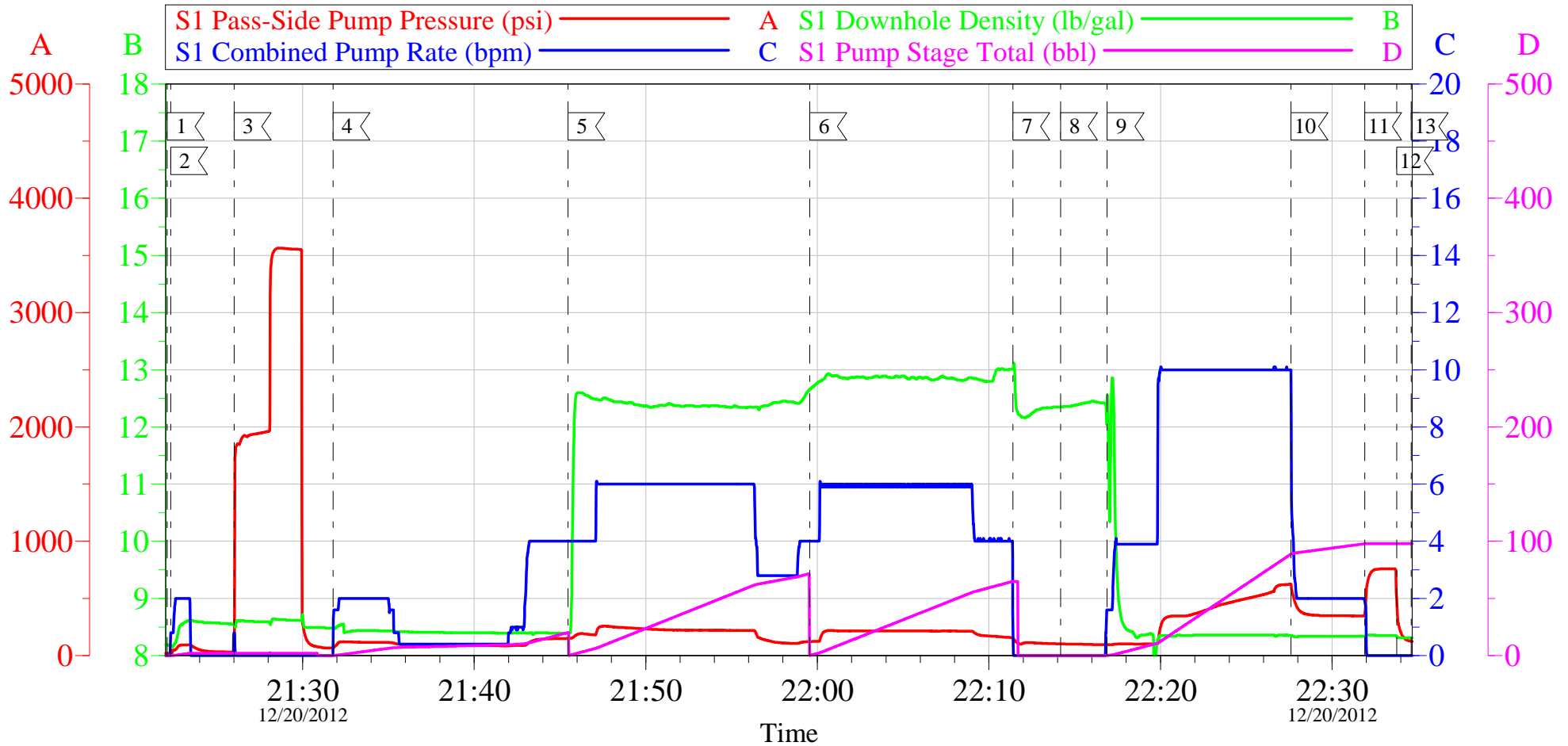
SUMMIT Version: 7.3.0045

Monday, January 07, 2013 04:10:00

		#		Stage	Total	Tubing	Casing	
Pump Tail Cement	12/20/2012 21:59		6	60.1			214.0	160 SKS AT 12.8 PPG, 2.11 FT3/SK, 11.75 GAL/SK
Shutdown	12/20/2012 22:11							
Drop Top Plug	12/20/2012 22:14							PLUG LAUNCHED. WASHED UP ON TOP OF PLUG AS PER COMPANY REP
Pump Displacement	12/20/2012 22:16		10	89.2			630.0	FRESH WATER
Slow Rate	12/20/2012 22:27		2	10			350.0	SLOW RATE 10 BBLs PRIOR TO CALCULATED DISPLACEMENT
Bump Plug	12/20/2012 22:31		2		99.2		760.0	PLUG BUMPED
Check Floats	12/20/2012 22:33							FLOATS HOLDING. HES RETURNED 1/2 BBL H2O TO PUMP
End Job	12/20/2012 22:34							PIPE WAS STATIC DURING JOB, GOOD CIRCULATION THROUGHOUT JOB. HES RETURNED 30 BBL CEMENT TO SURFACE. USED 40 LB SUGAR FOR JOB
Pre-Rig Down Safety Meeting	12/20/2012 22:40							WITH ALL HES PERSONNEL
Rig-Down Equipment	12/20/2012 22:45							
Pre-Convoy Safety Meeting	12/21/2012 00:20							WITH ALL HES PERSONNEL
Crew Leave Location	12/21/2012 00:30							
Comment	12/21/2012 00:31							THANK YOU FOR USING HALLIBURTON CEMENT DEPARTMENT. JESSE SLAUGHTER AND CREW.

WPX PA 443-5

9 5/8 SURFACE



Local Event Log

1 START JOB	21:22:07	2 PRIME LINES	21:22:19	3 TEST LINES	21:26:01
4 PUMP H2O SPACER	21:31:46	5 PUMP LEAD CEMENT	21:45:28	6 PUMP TAIL CEMENT	21:59:34
7 SHUTDOWN	22:11:24	8 DROP TOP PLUG	22:14:10	9 PUMP DISPLACEMENT	22:16:54
10 SLOW RATE	22:27:36	11 BUMP PLUG	22:31:54	12 CHECK FLOATS	22:33:46
13 END JOB	22:34:37				

Customer: WPX
Well Description: PA 443-5
Customer Rep: RON TOWERS

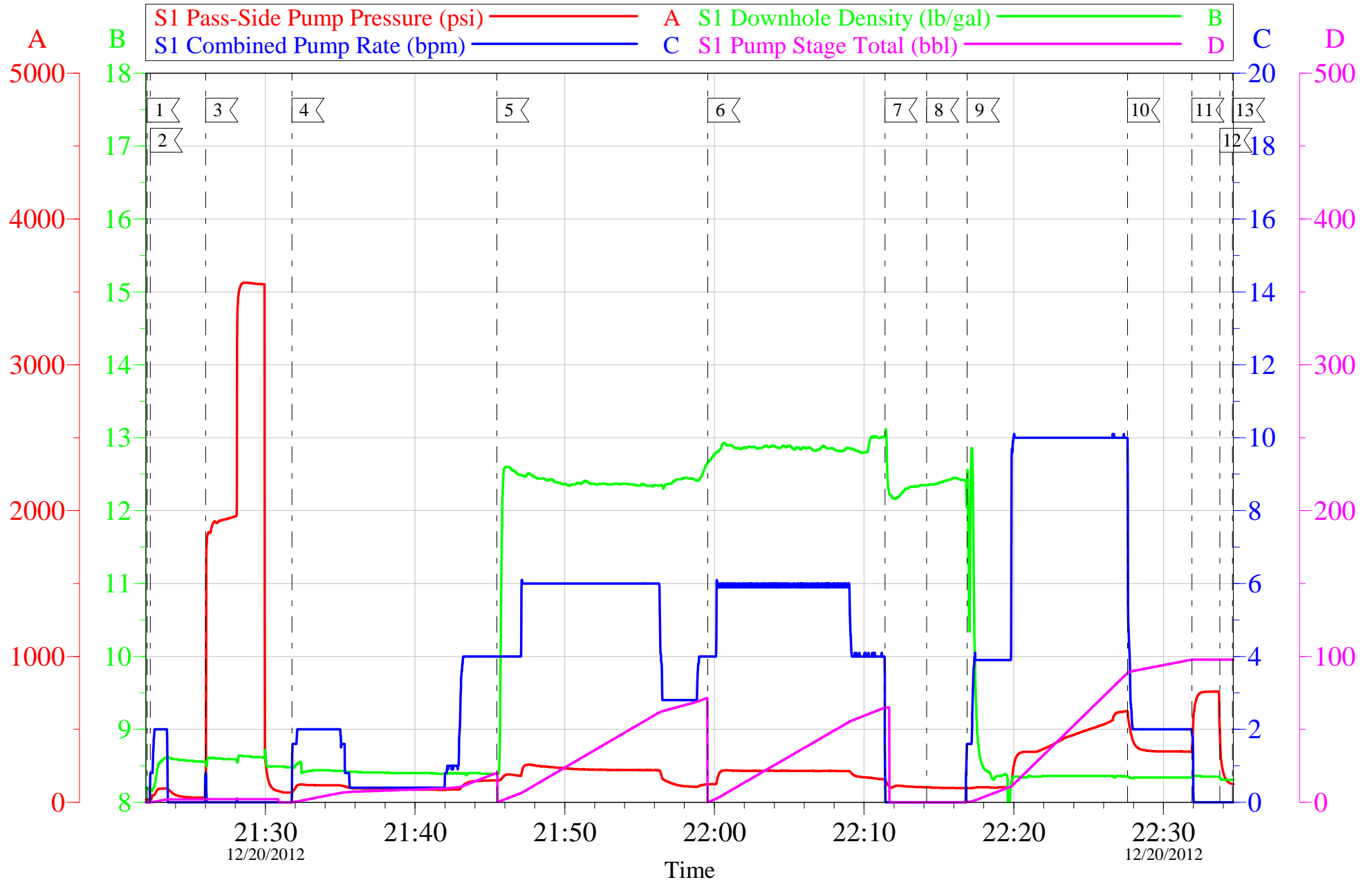
Job Date: 20-Dec-2012
Job Type: SURFACE
Cement Supervisor: JESSE SLAUGHTER

Sales Order #: 900033948
ADC Used: YES
Elite #: DUSTIN HYDE

OptiCem v6.4.10
20-Dec-12 22:47

WPX PA 443-5

9 5/8 SURFACE



Customer: WPX
Well Description: PA 443-5
Customer Rep: RON TOWERS

Job Date: 20-Dec-2012
Job Type: SURFACE
Cement Supervisor: JESSE SLAUGHTER

Sales Order #: 900033948
ADC Used: YES
Elite #7: DUSTIN HYDE

OptiCem v6.4.10
20-Dec-12 22:48

HALLIBURTON

Water Analysis Report

Company: WILLIAMS PRODUCTION

Submitted by: JESSE SLAUGHTER

Attention: LAB

Lease PA

Well # 443-5

Date: 12/20/2012

Date Rec.:

S.O.# 900033948

Job Type: SURFACE

Specific Gravity	<i>MAX</i>	1
pH	<i>8</i>	6
Potassium (K)	<i>5000</i>	250 Mg / L
Calcium (Ca)	<i>500</i>	120 Mg / L
Iron (FE2)	<i>300</i>	0 Mg / L
Chlorides (Cl)	<i>3000</i>	0 Mg / L
Sulfates (SO ₄)	<i>1500</i>	UNDER 200 Mg / L
Chlorine (Cl ₂)		0 Mg / L
Temp	<i>40-80</i>	60 Deg
Total Dissolved Solids		200 Mg / L

Respectfully: JESSE SLAUGHTER

Title: CEMENTING SUPERVISOR

Location: Grand Junction, CO

NOTICE:

This report is limited to the described sample tested. Any person using or relying on this report agrees that Halliburton shall not be liable for any loss or damage whether due to act or omission resulting from such report or its use.

Sales Order #: 900033948	Line Item: 10	Survey Conducted Date: 12/20/2012
Customer: WPX ENERGY ROCKY MOUNTAIN LLC-EBUS		Job Type (BOM): CMT SURFACE CASING BOM
Customer Representative: RON TOWERS		API / UWI: (leave blank if unknown) 05-045-20059
Well Name: PA		Well Number: 443-5
Well Type: Development Well	Well Country: United States of America	
H2S Present: No	Well State: Colorado	Well County: Garfield

Dear Customer,

We hope that you were satisfied with the service quality of this job performed by Halliburton. It is the aim of our management and service personnel to deliver equipment and service of a standard unmatched in the service sector of the energy industry.

Please take the time to let us know if our performance met with your satisfaction. Please be as critical as possible to ensure we constantly improve our service. Your comments are of great value to us and are intended for the exclusive use of Halliburton.

CUSTOMER SATISFACTION SURVEY

CATEGORY	CUSTOMER SATISFACTION RESPONSE	
Survey Conducted Date	The date the survey was conducted	12/20/2012
Survey Interviewer	The survey interviewer is the person who initiated the survey.	JESSE SLAUGHTER (HB21762)
Customer Participation	Did the customer participate in this survey? (Y/N)	Yes
Customer Representative	Enter the Customer representative name	RON TOWERS
HSE	Was our HSE performance satisfactory? Circle Y or N	Yes
Equipment	Were you satisfied with our Equipment? Circle Y or N	Yes
Personnel	Were you satisfied with our people? Circle Y or N	Yes
Customer Comment	Customer's Comment	

CUSTOMER SIGNATURE

Sales Order #: 900033948	Line Item: 10	Survey Conducted Date: 12/20/2012
Customer: WPX ENERGY ROCKY MOUNTAIN LLC-EBUS		Job Type (BOM): CMT SURFACE CASING BOM
Customer Representative: RON TOWERS		API / UWI: (leave blank if unknown) 05-045-20059
Well Name: PA		Well Number: 443-5
Well Type: Development Well	Well Country: United States of America	
H2S Present: No	Well State: Colorado	Well County: Garfield

KEY PERFORMANCE INDICATORS

General	
Survey Conducted Date The date the survey was conducted	12/20/2012

Cementing KPI Survey	
Type of Job Select the type of job. (Cementing or Non-Cementing)	0
Select the Maximum Deviation range for this Job What is the highest deviation for the job you just completed? This may not be the maximum well deviation.	Vertical
Total Operating Time (hours) Total Operating Hours Including Rig-up, Pumping, Rig-down. Enter in decimal format.	4
HSE Incident, Accident, Injury HSE Incident, Accident, Injury. This should be recordable incidents only.	No
Was the job purpose achieved? Was the job delivered correctly as per customer agreed design?	Yes
Operating Hours (Pumping Hours) Total number of hours pumping fluid on this job. Enter in decimal format.	1.5
Customer Non-Productive Rig Time (hrs) Lost time due to Halliburton in the start, execution, or completion of an ordered service or product, or delays in a follow-on service. Enter in decimal format. 0 if none.	0
Type of Rig Classification Job Was Performed Type Of Rig (classification) Job Was Performed On	Drilling Rig (Portable)
Number Of JSAs Performed Number Of Jsas Performed	6
Number of Unplanned Shutdowns Unplanned shutdown is when injection stops for any period of time.	0
Was this a Primary Cement Job (Yes / No)	Yes

Sales Order #: 900033948	Line Item: 10	Survey Conducted Date: 12/20/2012
Customer: WPX ENERGY ROCKY MOUNTAIN LLC-EBUS		Job Type (BOM): CMT SURFACE CASING BOM
Customer Representative: RON TOWERS		API / UWI: (leave blank if unknown) 05-045-20059
Well Name: PA		Well Number: 443-5
Well Type: Development Well	Well Country: United States of America	
H2S Present: No	Well State: Colorado	Well County: Garfield

Primary Cement Job= Casing job, Liner job, or Tie-back job.	
Did We Run Wiper Plugs? Did We Run Top And Bottom Casing Wiper Plugs?	Top
Mixing Density of Job Stayed in Designed Density Range (0-100%) Density Range defined as +/- .20 ppg. Calculation: Total BBLs cement mixed at designed density divided by total BBLs of cement multiplied by 100	95
Was Automated Density Control Used? Was Automated Density Control (ADC) Used ?	Yes
Pump Rate (percent) of Job Stayed At Designed Pump Rate Pump Rate range defined as +/- 1bbl/min. Calculation: Total BBLs of fluid pumped at the designed rate divided by Total BBLs of fluid pumped, multiplied by 100	95
Nbr of Remedial Sqz Jobs Rqd - Competition Number Of Remedial Squeeze Jobs Required After Primary Job Performed By Competition	0
Nbr of Remedial Plug Jobs Rqd - HES Number Of Remedial Plug Jobs Needed After Primary Plug Pumped By HES	0
Nbr of Remedial Sqz Jobs Rqd - HES Number Of Remedial Squeeze Jobs Required After Primary Job Performed By HES	0