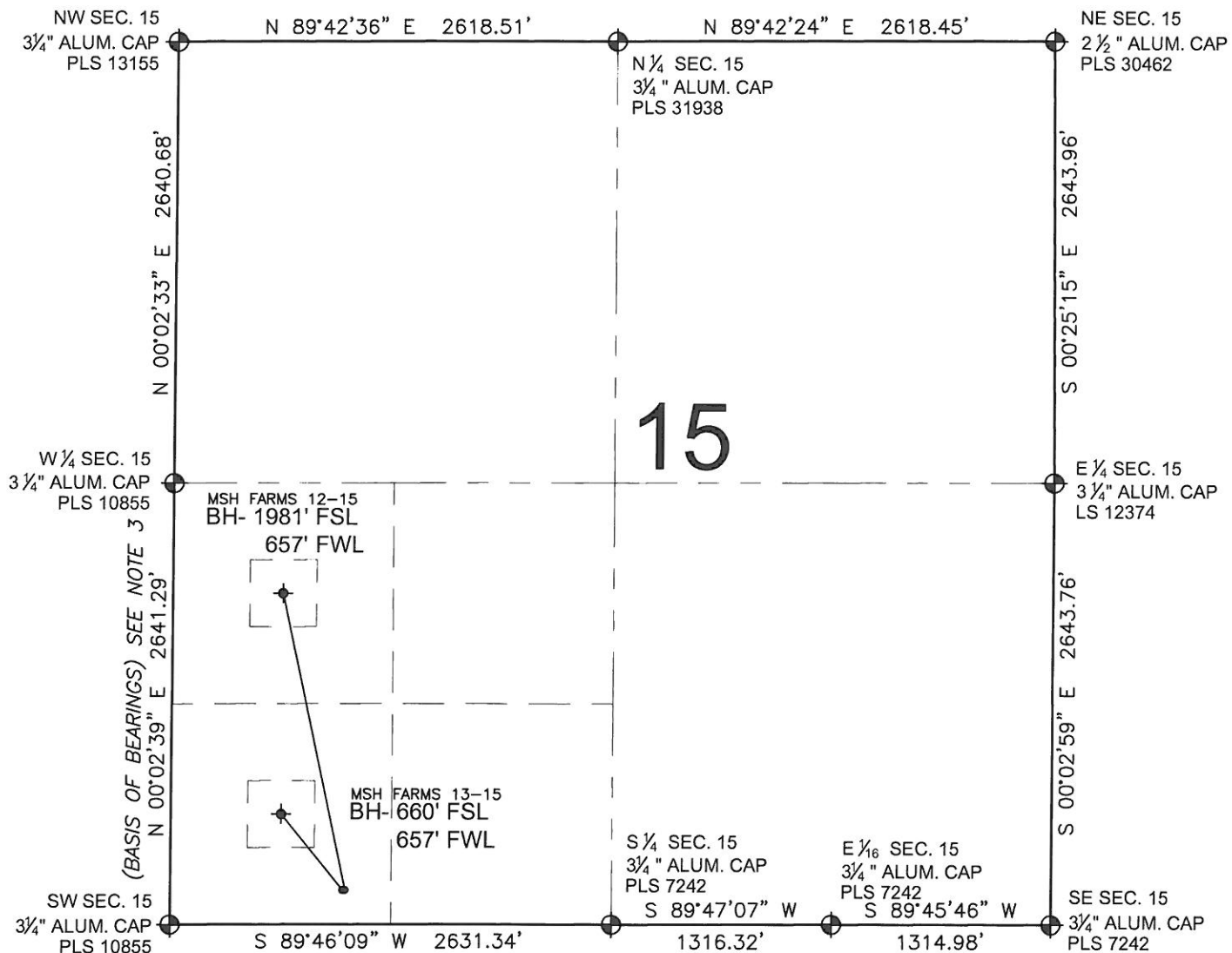


PAD DRAWING: MSH FARMS 15-P PAD

SECTION 15, TOWNSHIP 7 NORTH, RANGE 67 WEST, 6TH P.M.



NOTES:

- THIS FIELD SURVEY CONFORMS TO THE MINIMUM STANDARDS SET BY THE C.O.G.C.C., RULE NO. 215
- HORIZONTAL POSITIONS AND ORTHOMETRIC ELEVATIONS SHOWN AT THE WELL HEAD, ARE BASED ON GPS-RTK POSITIONS DERIVED FROM MINIMUM 2-HOUR STATIC OBSERVATIONS CORRECTED BY THE NATIONAL GEODETIC SURVEY ONLINE POSITIONING USER SERVICE, O.P.U.S. DATUM: HORIZONTAL = NAD83/2007, VERTICAL = NAVD88
- THE BASIS OF BEARINGS ARE STATE PLANE COORDINATE SYSTEM GRID BEARINGS SHOWN HEREON BETWEEN THE DESCRIBED MONUMENTS SHOWN HEREON.
- GRID DISTANCES ARE SHOWN, AS MEASURED IN THE FIELD, WITH TIES TO WELLS MEASURED PERPENDICULAR TO SECTION LINES.

LEGEND

- = EXISTING MONUMENT
 = BOTTOM HOLE
 BH= BOTTOM HOLE
 = PROPOSED WELL
 = EXISTING WELL

NOTES:

MSH FARMS 12-15 TO BE AT 205' FSL, 1041' FWL.
 BOTTOM HOLE AT 1981' FSL & 657' FWL.
 MSH FARMS 13-15 TO BE AT 205' FSL, 1026' FWL.
 BOTTOM HOLE AT 660' FSL & 657' FWL.

PREPARED BY:

PFS



Petroleum Field Services, LLC
1801 W. 13th Ave.
Denver, CO 80204

BAYSWATER EXPLORATION & PRODUCTION, LLC

FIELD DATE: 03-29-13	PAD NAME: MSH FARMS 15-P PAD
DRAWING DATE: 04-15-13	SURFACE LOCATION: SW 1/4 SW 1/4, SEC. 15, T7N, R67W, 6TH P.M. WELD COUNTY, COLORADO
BY: KAD	CHECKED: MLP

