

LOG created using Lplot VH Version 3.0, April 16, 2012, Copyright (C) 1999-2009 Pason Systems Corp.

**OPERATOR:** NOBLE ENERGY  
**WELL:** WASHBURN LE 22-78HN  
**LOCATION:** SEC22, T8N, R61W  
**COUNTY:** WELD  
**STATE:** COLORADO  
**SPOT:** 250' FNL 280' FWL  
**ELEVATION:** GE 4985' KB 5014'  
**FIELD:** WATTENBERG  
**SPUD DATE:** APRIL 9, 2012  
**TD DATE:** APRIL 11, 2012  
**DATES LOGGED:** 4/10/12 - 4/11/12  
**DEPTHS LOGGED:** 1100' - 5811'  
**LOGGERS:** MIKE KERSCHEN / MIKE SULLIVAN  
**DRILLING FLUID:** WATER, MUD, POLY  
**DRILLING RIG:** H&P 326  
**API:** 05-123-35060  
**LOG TYPE:** VERTICAL  
**SCALE:** 1:240 (5 inches per 100 feet)  
**REMARKS:**

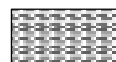
### LITHOLOGIES



No Sample



Sandstone



Shale



Shaly Sandstone



Shaly Siltstone

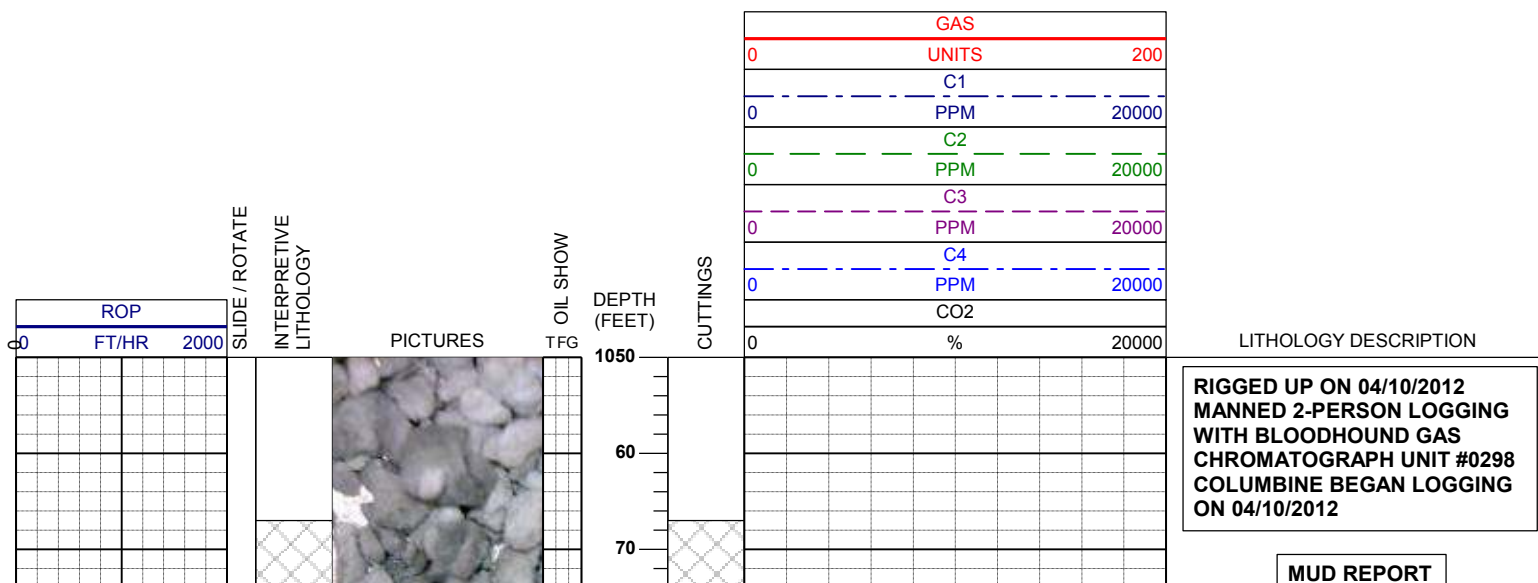


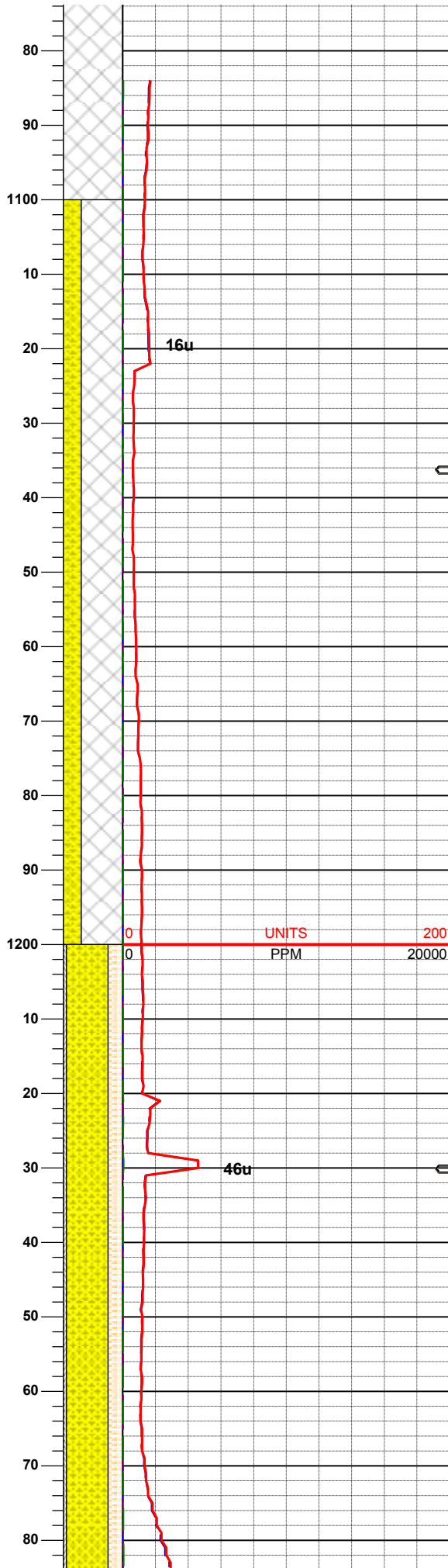
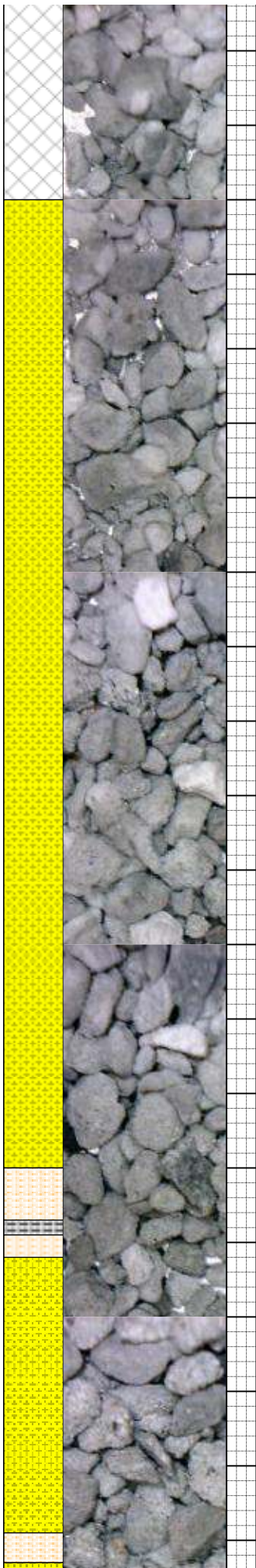
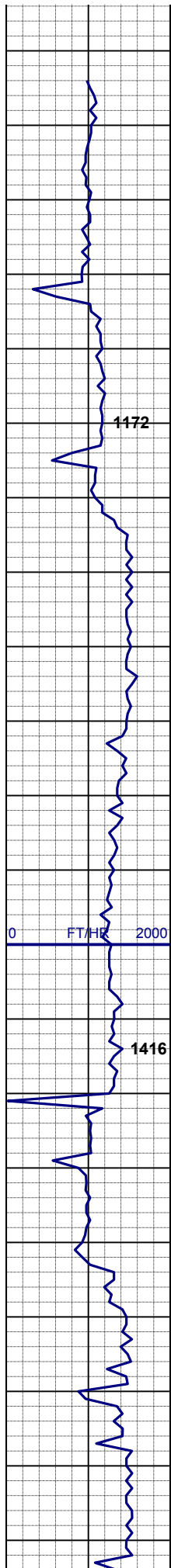
Silty Shale

### ENGINEERING SYMBOLS



Connection



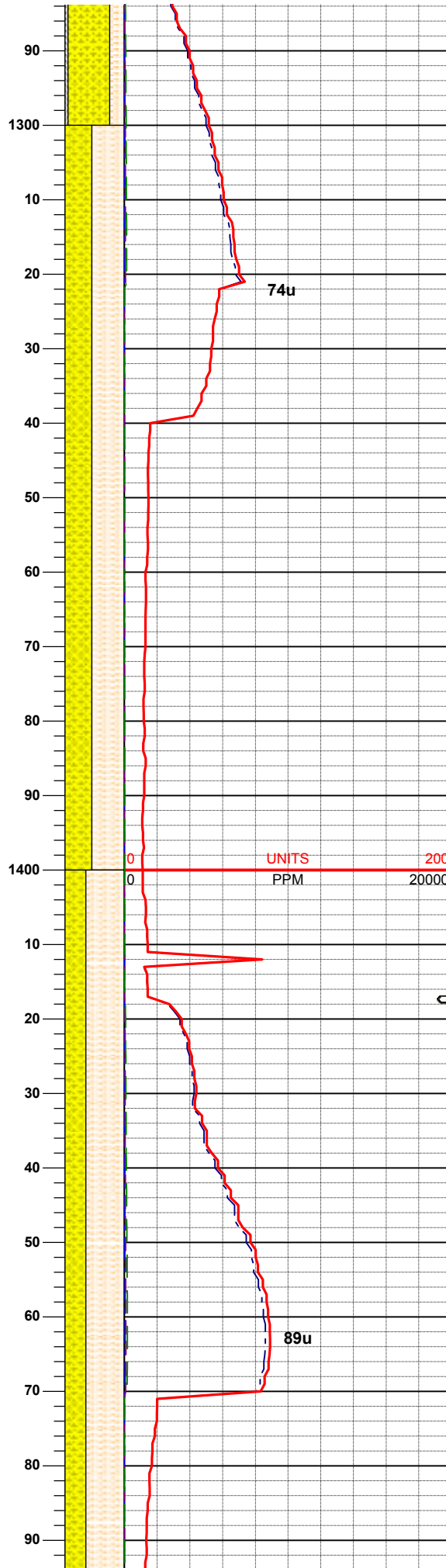
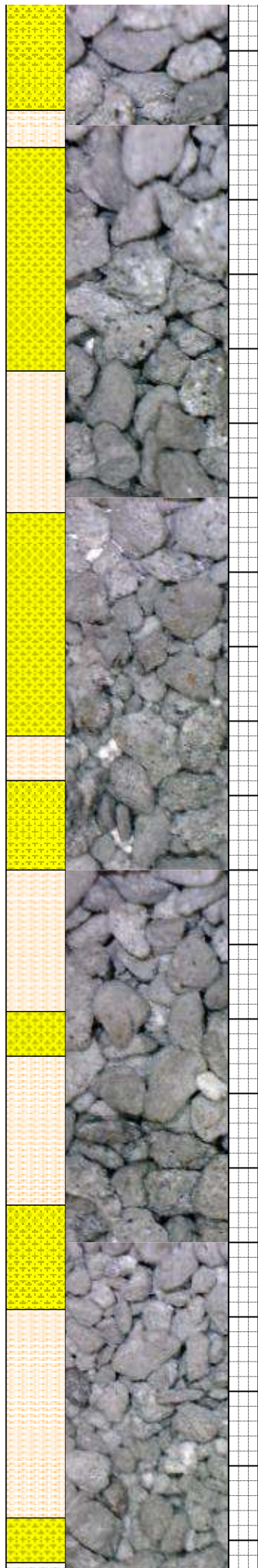
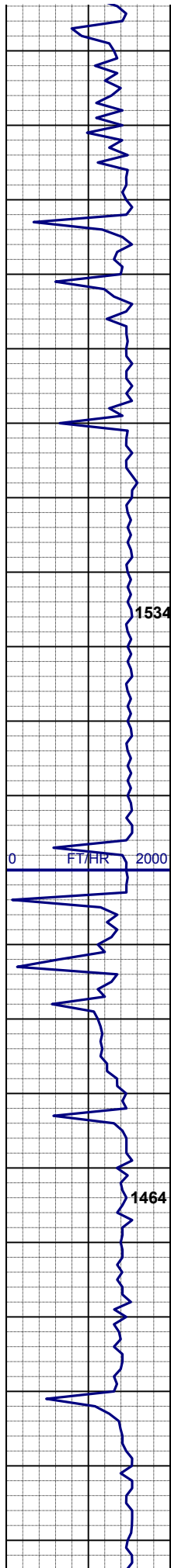


1,067' MD  
Wt - 8.60  
Vis - 27  
pH - 8.0  
YP - 23  
API flt -30.0  
Ck - 1/0

Drilled cement shoe.  
100% cement

70% CMT: lt-m gy, mod firm -modsft, sb ang to sb rd, slty-vsdy, vsl calc  
30% SHYSS: ltgy-m gy, fgr-mgr, sbrd -sbply, m-psrt, mod firm -modsft, arg cmt, vsl calc

70% SHYSS: ltgy-m gy, fgr-mgr, sbrd -sbply, m-psrt, mod firm -modsft, arg cmt, vsl calc 25% SLTYSH: m gy, mod firm -modsft, sbrd-sbply, noncalc 5% SH: dk gy, mod firm - modsft, sbply

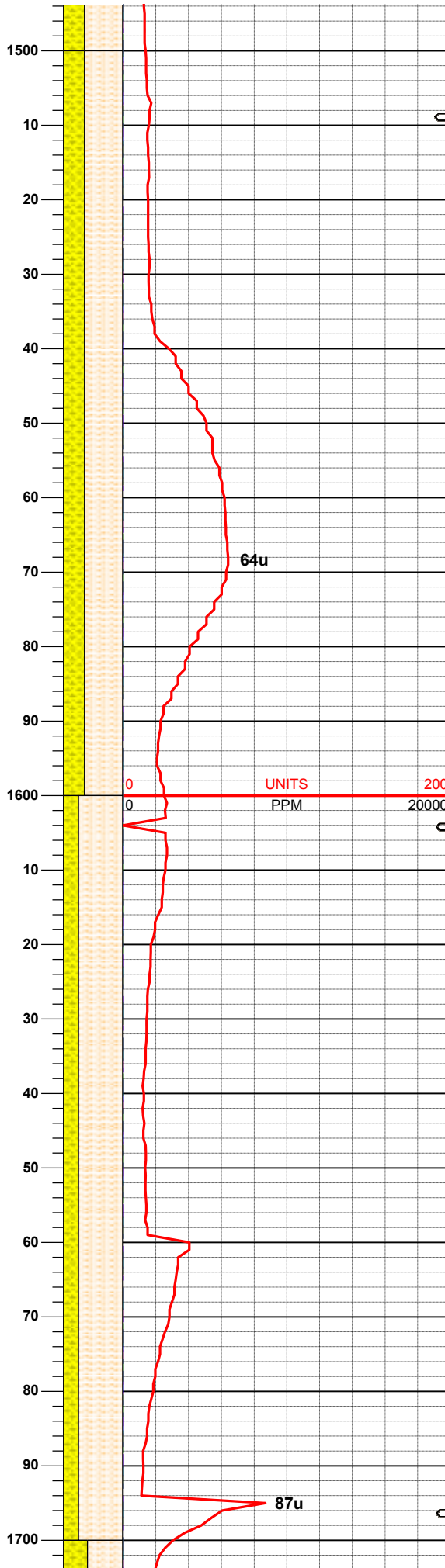
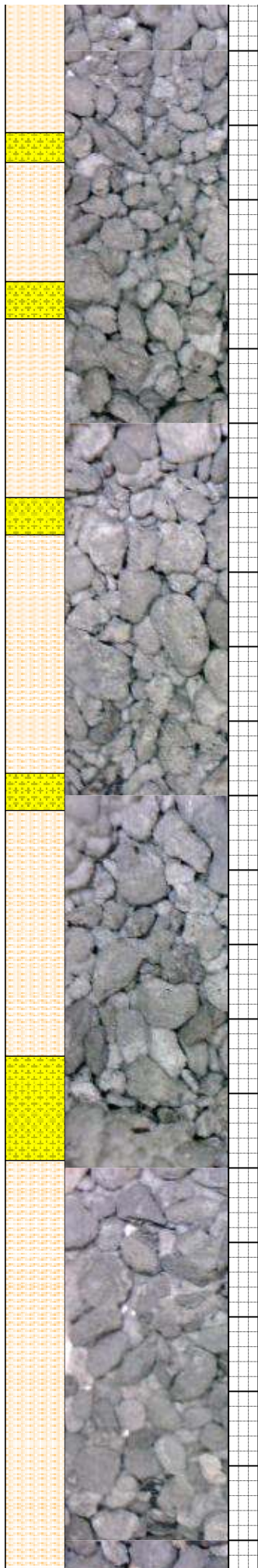
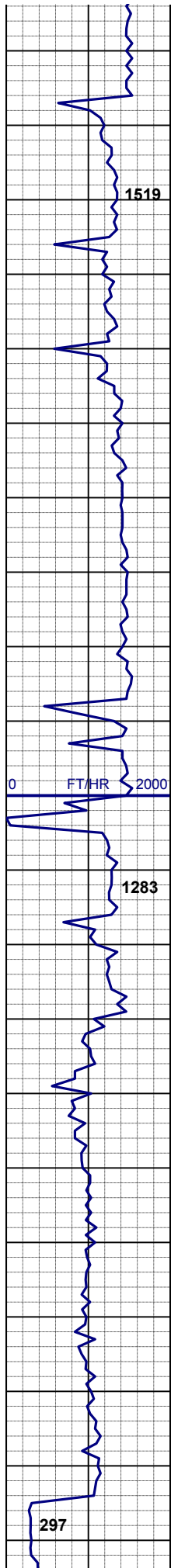


55% SLTYSH: lt-m gy, mod firm -  
modsf, sb blk-y-sb rd, slty-vsdy,  
noncalc  
45% SHYSS: ltgy-m brngy, fgr, sbdr-  
sbplty, f-psrt, mod firm -modsf, arg  
cmt, vsl calc, sme phlog, sme glau,  
carb flk, tr ss

**SURVEY**  
**MD 1369'**  
**TVD 1368.947'**  
**INC 2.0°**  
**AZI 196.2°**

65% SLTYSH: lt-m gy, mod firm -  
modsf, sb blk-y-sb rd, slty-vsdy,  
noncalc  
35% SHYSS: ltgy-m brngy, fgr, sbdr-  
sbplty, f-psrt, mod firm -modsf, arg  
cmt, vsl calc, sme phlog, sme glau,  
carb flk, tr ss

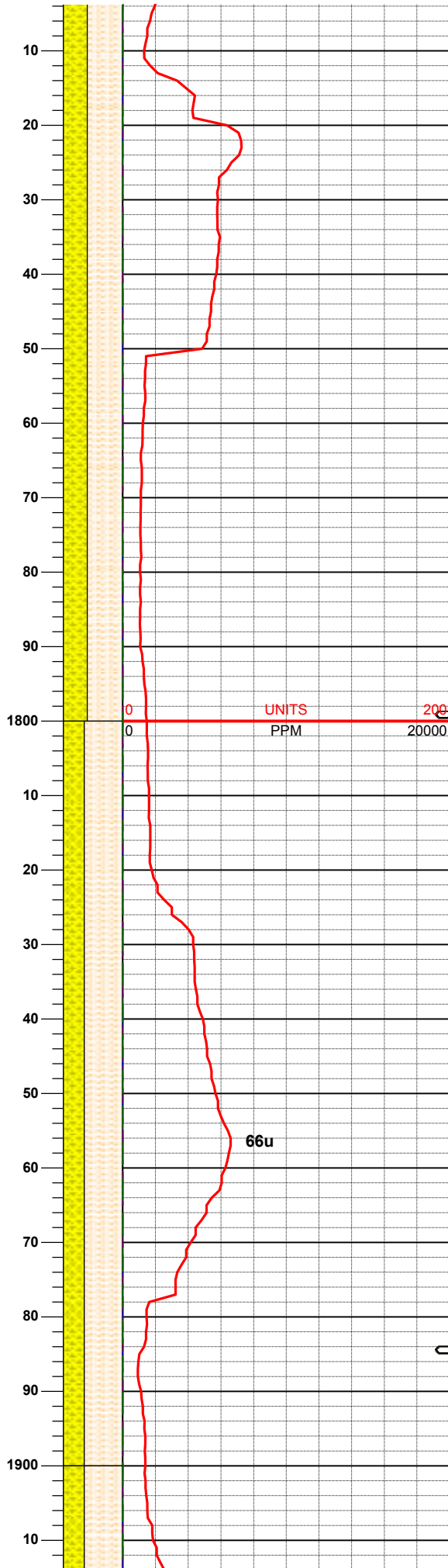
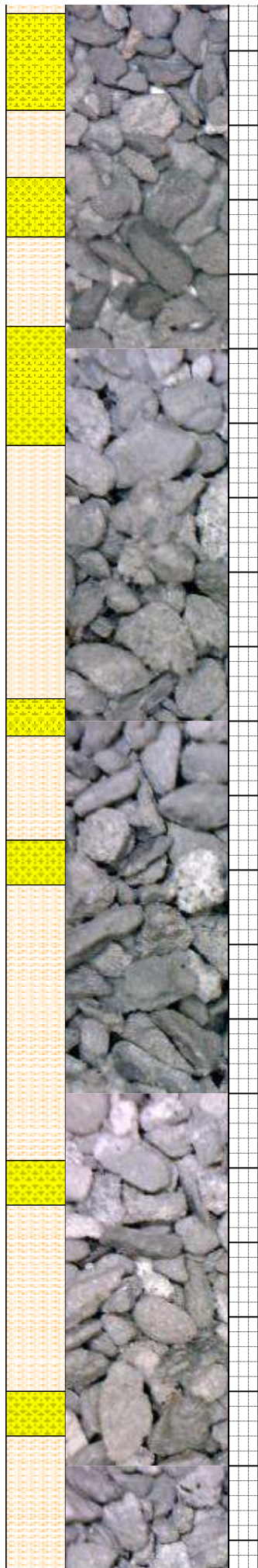
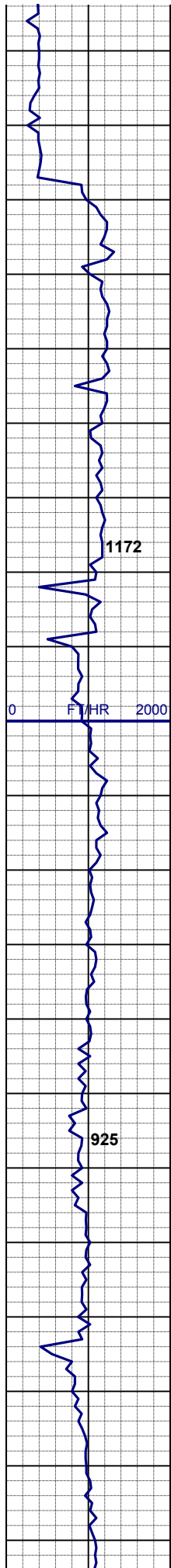




65% SLTYSH: lt-m gy, mod firm -  
modsft, sb blk-y-sb rd, slty-vsdy,  
noncalc  
35% SHYSS: ltgy-m brngy, fgr, sbrd-  
sbplty, f-psrt, mod firm -modsft, arg  
cmt, vsl calc, sme phlog, sme glau,  
carb flk, tr ss

75% SLTYSH: lt-m gy, mod firm -  
modsft, sb blk-y-sb rd, slty-vsdy,  
noncalc  
25% SHYSS: ltgy-m brngy, fgr, sbrd-  
sbplty, f-psrt, mod firm -modsft, arg  
cmt, vsl calc, sme phlog, sme glau,  
carb flk, sme blk SH:, tr ss

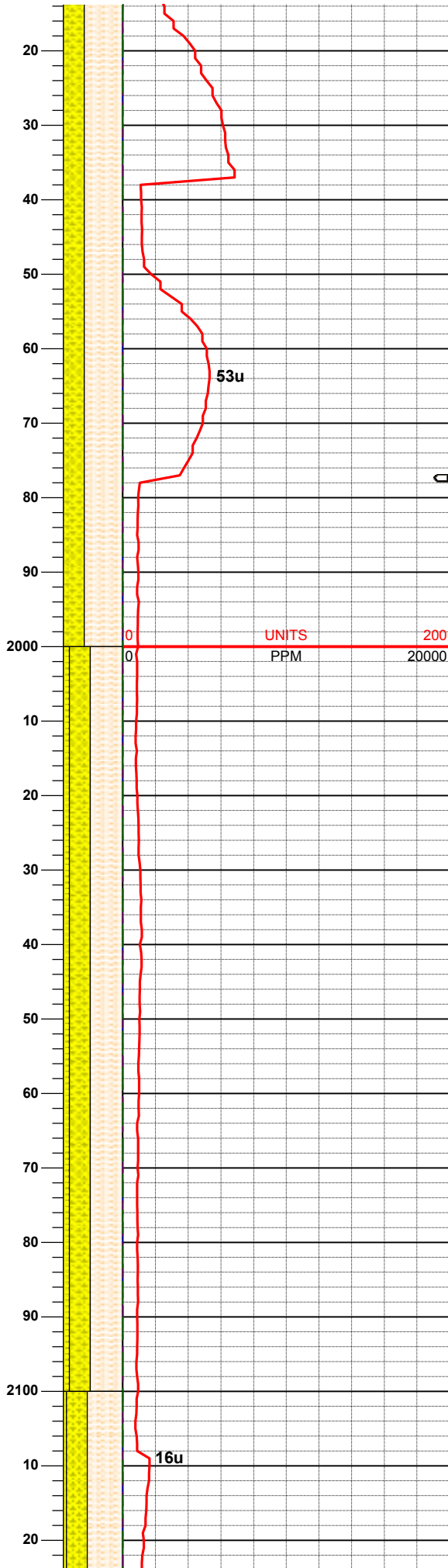
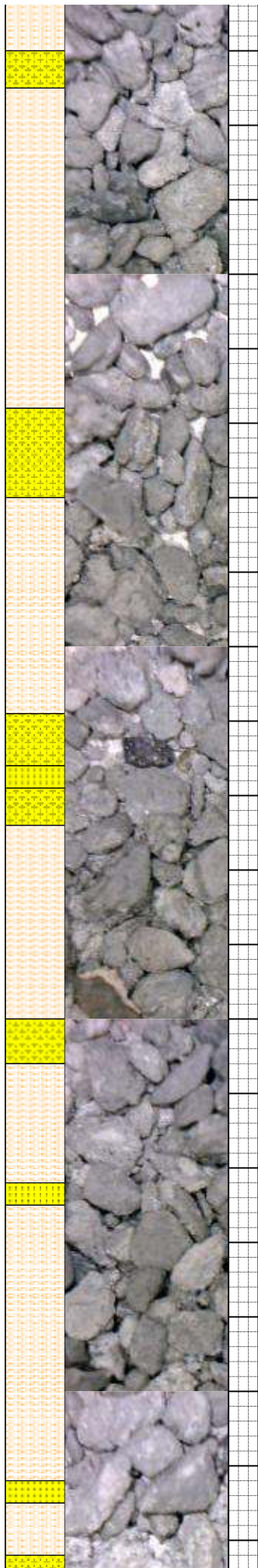
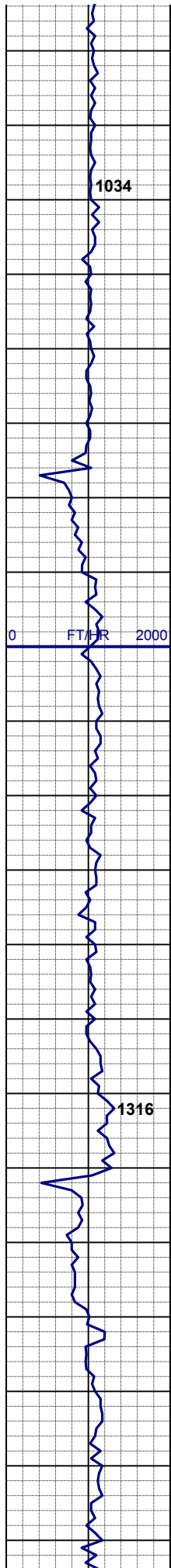
**SURVEY**  
**MD 1648'**  
**TVD 1647.77'**  
**INC 2.0°**  
**AZI 186.1°**



60% SLTYSH: lt-m gy, mod firm -  
modstf, sb blk-y-sb rd, slty-vsdy,  
noncalc  
40% SHYSS: ltgy-m brngy, fgr, sbdr-  
sbplty, f-psrt, mod firm -modstf, arg  
cmt, vsl calc, sme phlog, sme glau, tr  
ss

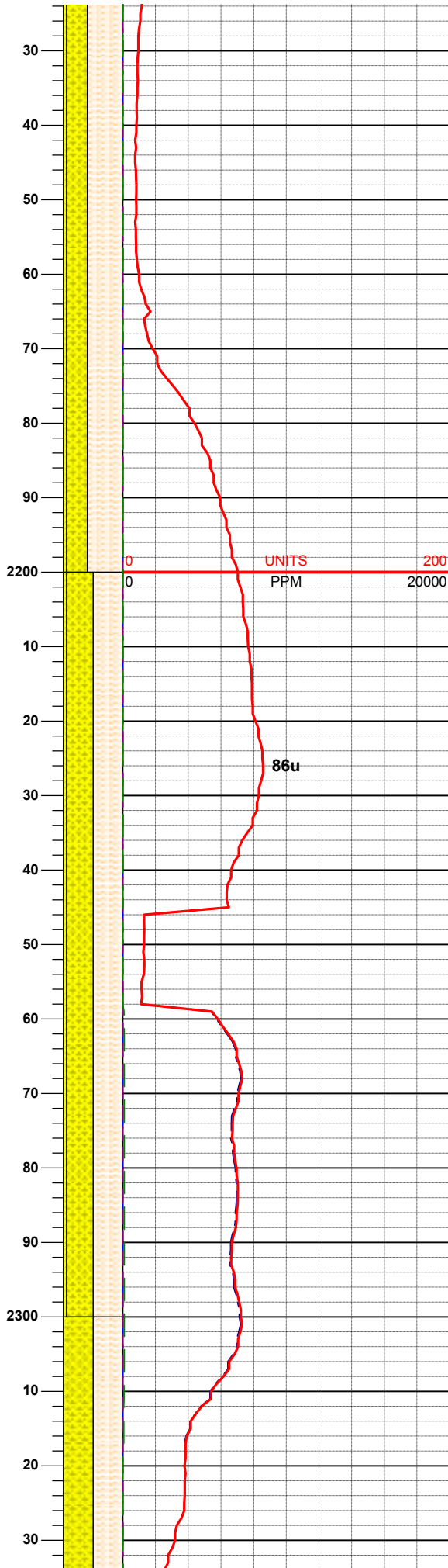
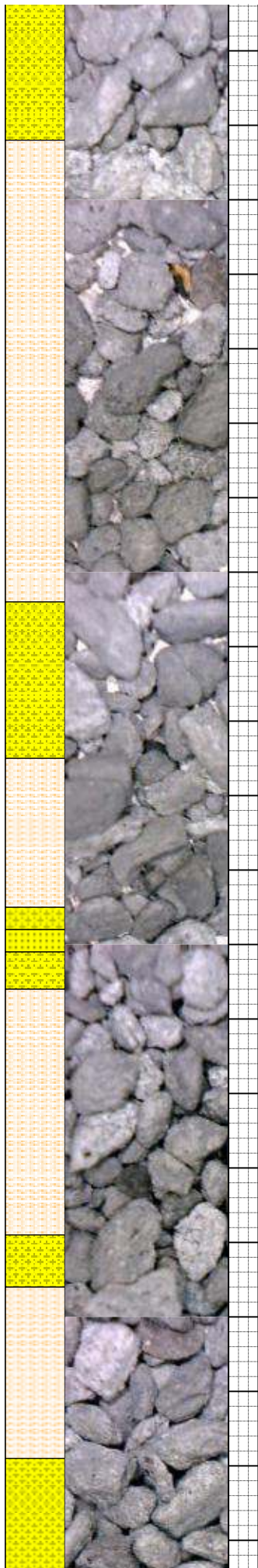
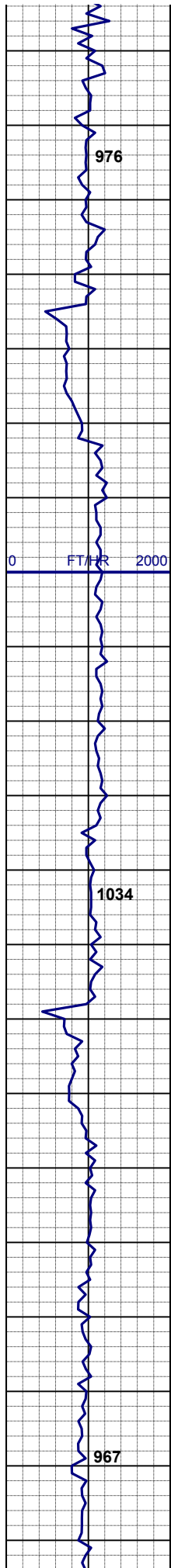
65% SLTYSH: lt-m gy, mod firm -  
modstf, sb blk-y-sb rd, slty-vsdy,  
noncalc  
35% SHYSS: ltgy-m brngy, fgr, sbdr-  
sbplty, f-psrt, mod firm -modstf, arg  
cmt, vsl calc, sme phlog, sme glau, tr  
ss





65% SLTYSH: lt-m gy, mod firm - modsft, sb blk-y-sb rd, slty-vsdy, noncalc  
35% SHYSS: ltgy-m brngy, fgr, sbrd-sbplty, f-psrt, mod firm -modsft, arg cmt, vsl calc, sme phlog, sme glau, tr ss

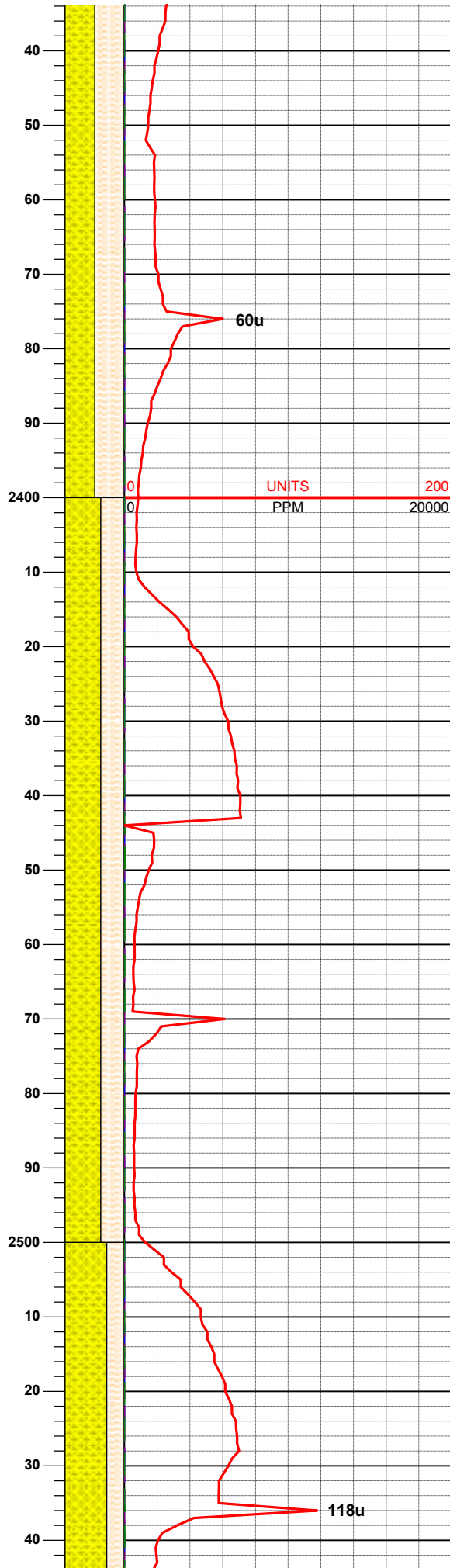
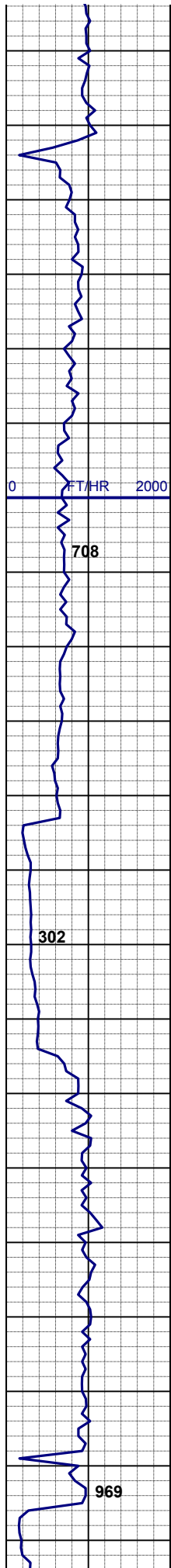
55% SLTYSH: lt-m gy, mod firm - modsft, sb blk-y-sb rd, slty-vsdy, noncalc  
35% SHYSS: ltgy-m brngy, fgr, sbrd-sbplty, f-psrt, mod firm -modsft, arg cmt, 10% SS: lt-med gy, s&p, m-cgr, vsl calc, sme phlog, sme glau



60% SLTYSH: lt-m gy, mod firm -  
modsft, sb blk-y-sb rd, slty-vsdy,  
noncalc  
35% SHYSS: ltgy-m brngy, fgr, sbrd-  
sbplty, f-psrt, mod firm -modsft, arg  
cmt, 5% SS: lt-med gy, s&p, m-cgr,  
vsl calc, sme phlog, sme glau

50% SLTYSH: lt-m gy, mod firm -  
modsft, sb blk-y-sb rd, slty-vsdy,  
noncalc  
45% SHYSS: ltgy-m gy, s&p, fgr,  
sbrd-sbplty, f-psrt, mod firm -modsft,  
arg cmt, 5% SS: lt-med gy, s&p, m-  
cgr, vsl calc, sme phlog, sme glau



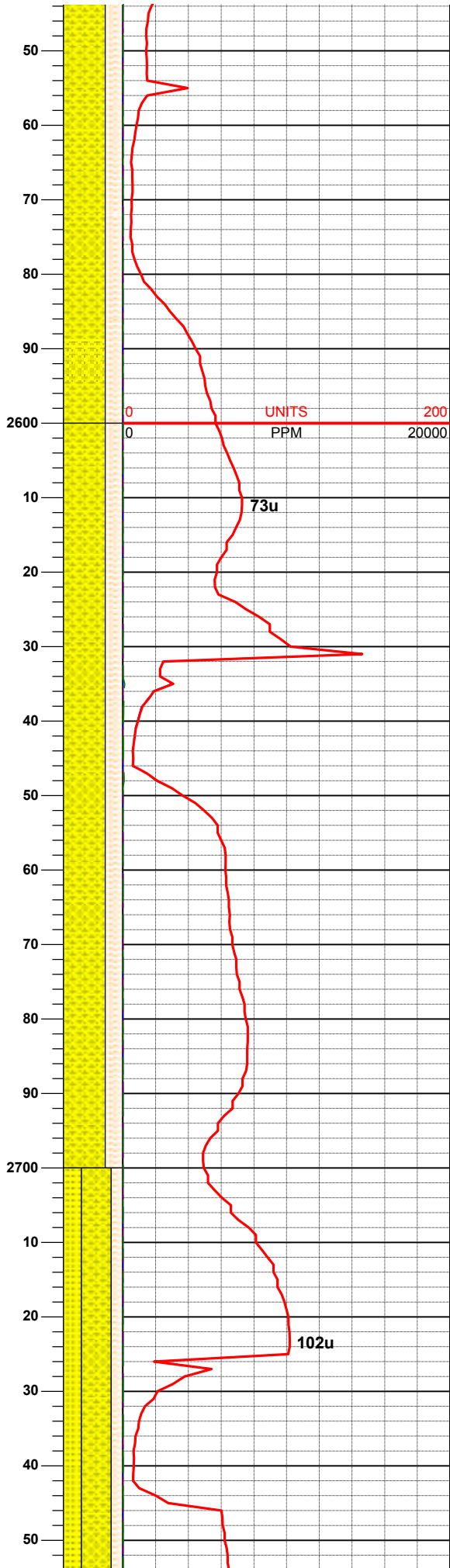
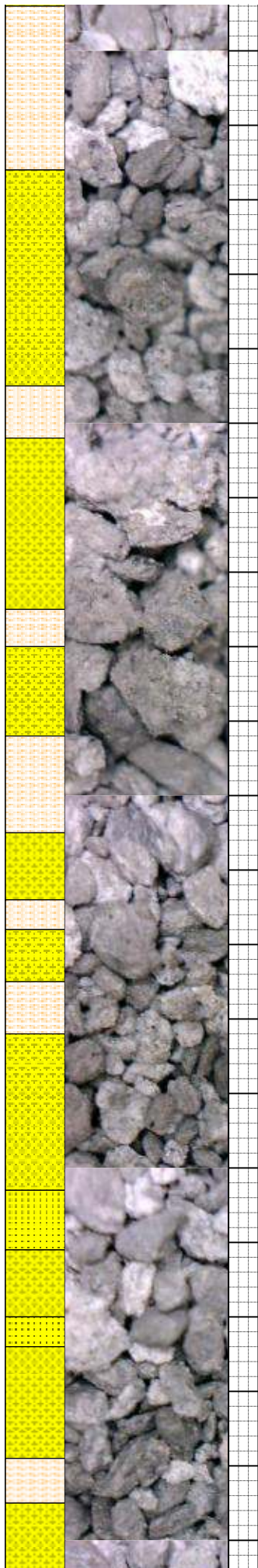
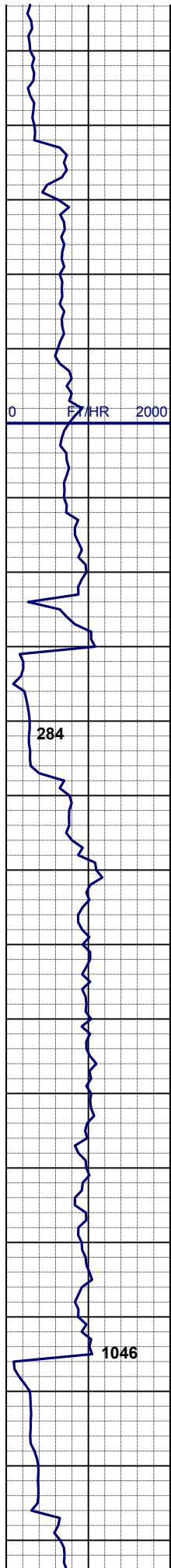


50% SLTYSH: lt-m gy, mod firm -  
modsft, sb blk-y-sb rd, slty-vsdy,  
noncalc  
50% SHYSS: ltgy-m gy, s&p, fgr,  
sbrd-sbplty, f-psrt, mod firm -modsft,  
arg cmt, sme phlog, sme glau, sme  
carb flk

60% SHYSS: ltgy-m gy, s&p, fgr,  
sbrd-sbplty, f-psrt, mod firm -modsft,  
arg cmt, sme phlog, sme glau, sme  
carb flk 40% SLTYSH: lt-m gy, mod  
firm -modsft, sb blk-y-sb rd, slty-vsdy,  
noncalc

**SURVEY**  
**MD 2489'**  
**TVD 2488.68'**  
**INC 2.7°**  
**AZI 32.4°**





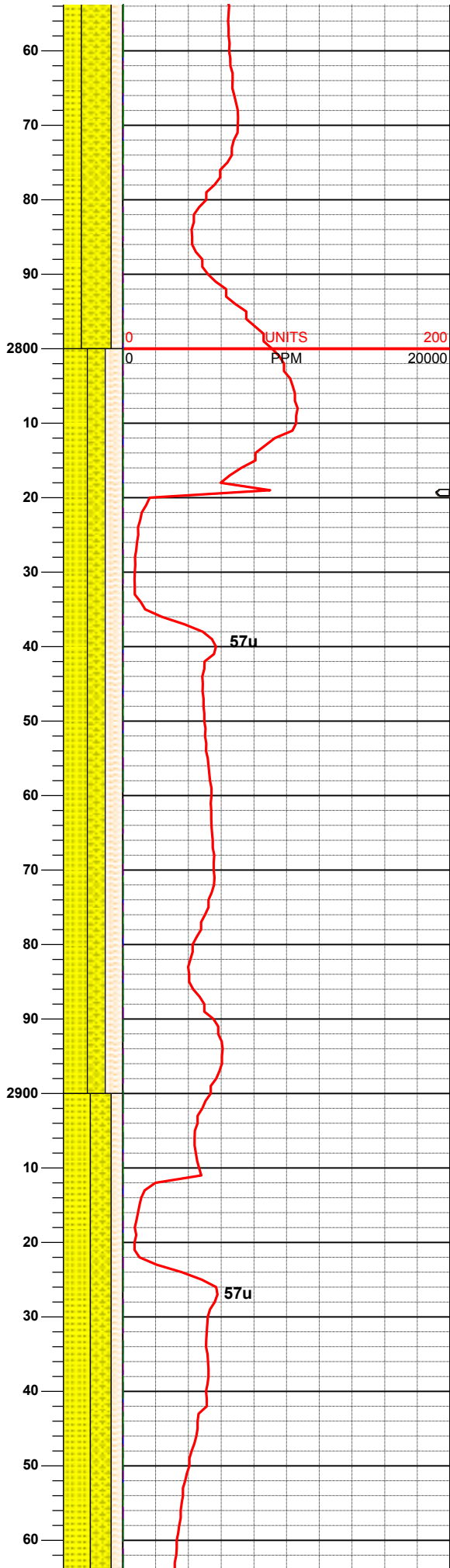
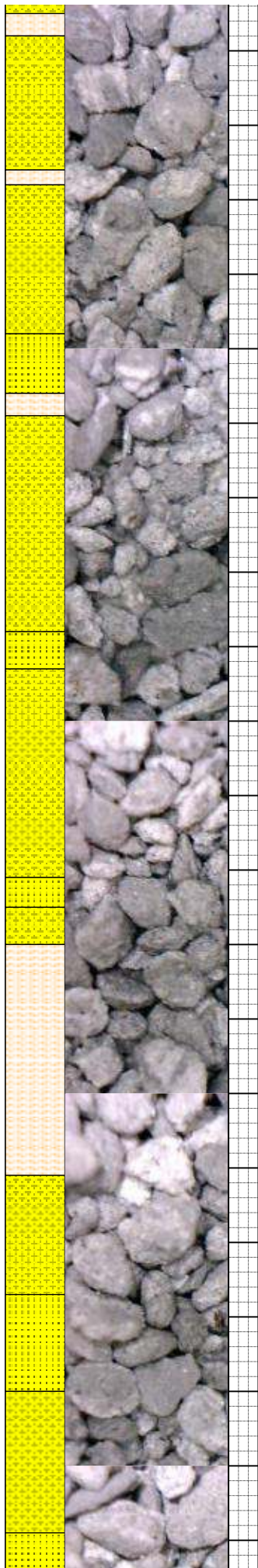
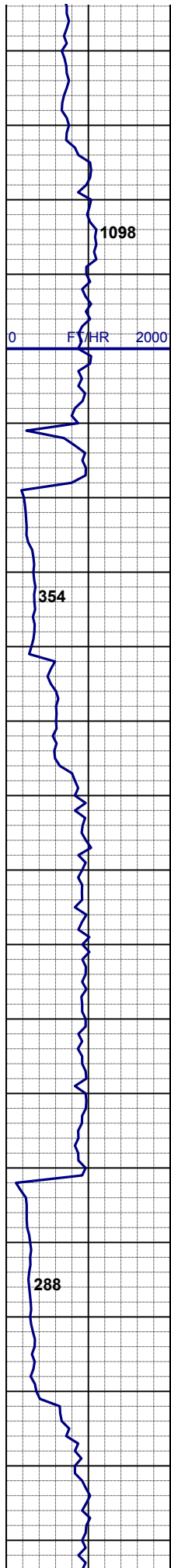
70% SHYSS: ltgy-m gy, s&p, fgr, sbrd-sbplty, f-psrt, mod firm -modsft, arg cmt, sme phlog, sme glau, sme carb flk 30% SLTYSH: lt-m gy, mod firm -modsft, sb blkly-sb rd, slty-vsdy, wk calc

**SURVEY**  
**MD 2583'**  
**TVD 2582.47'**  
**INC 4.9°**  
**AZI 55.8°**

70% SHYSS: ltgy-m gy, s&p, fgr, sbrd-sbplty, f-psrt, mod firm -modsft, arg cmt, wk calc, sme phlog, sme glau, sme carb flk 30% SLTYSH: lt-m gy, mod firm -modsft, sb blkly-sb rd, slty-vsdy, wk calc

**SURVEY**  
**MD 2677'**  
**TVD 2676.05'**  
**INC 5.9°**  
**AZI 55.4°**

50% SHYSS: lt-m gy, f-mgr, sbplty, f-psrt, mod firm -modsft, arg cmt, vsl calc  
30% SS: wh, s&p, fgr, sbrd-sbplty, mod-fr srt, firm, fri-brit, arg cmt, calc, mod nor glau, sme phlog 20%



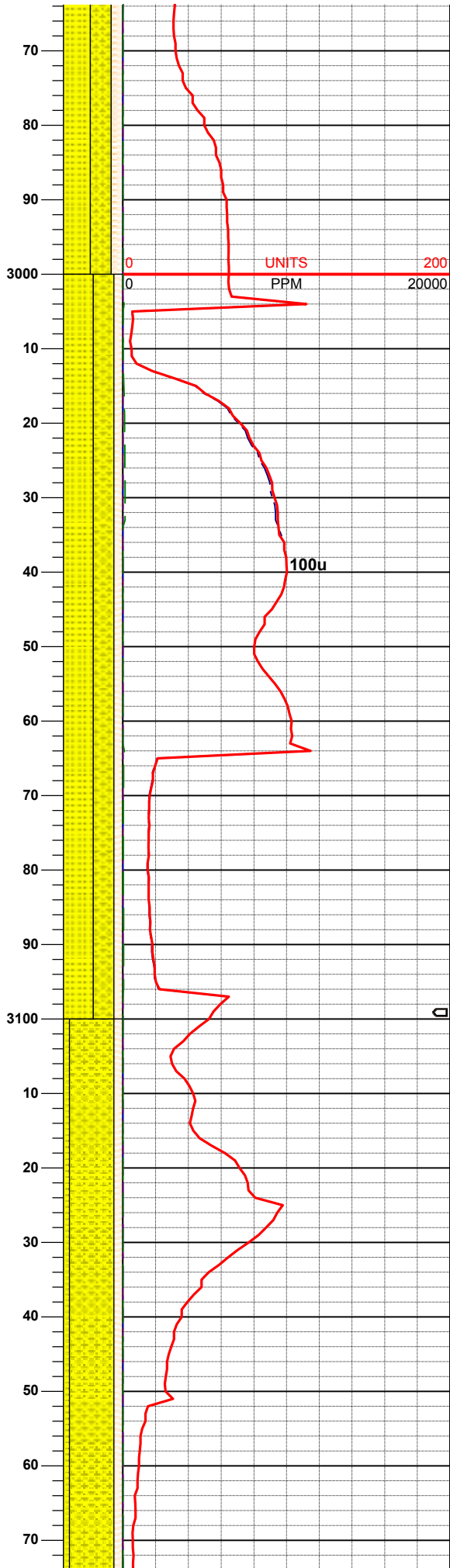
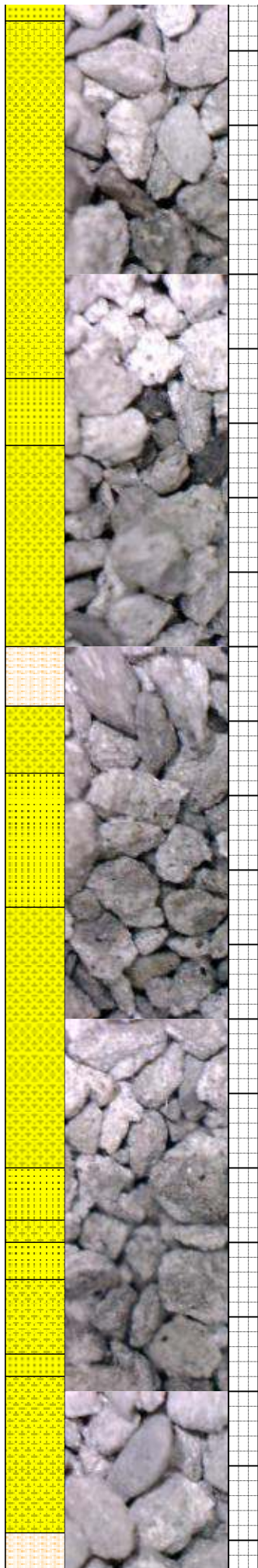
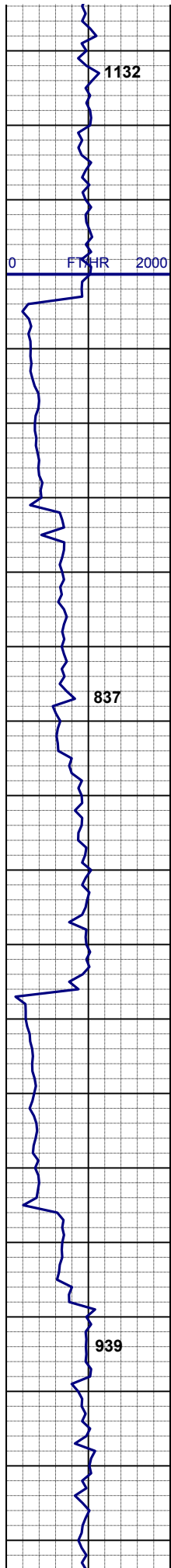
mod por, glau, sme phlog 20%  
SHYSLTST: mgy, sl firm -modsft,  
sbplty-sbblky, slty-vsdy, sme intbd ss,  
vsl calc

**SURVEY**  
**MD 2771'**  
**TVD 2769.41'**  
**INC 7.5°**  
**AZI 59.1°**

40% SS: wh, s&p, m-cgr, sb rd-sb  
plty, mod-fr srt, firm, fri-brit, arg cmt,  
calc, mod por, glau; sme phlog 30%  
SHYSS: lt-m gy, f-mgr, sbplty, f-psrt,  
mod firm -modsft, arg cmt, vsl calc  
30% SHYSLTST: mgy, sl firm -  
modsft, sbplty-sbblky, slty-vsdy, vsl  
calc

45% SS: wh, s&p, m-cgr, sb rd-sb  
plty, mod-fr srt, firm, fri-brit, arg cmt,  
m-vsl calc, mod por, glau; sme phlog  
35% SHYSS: lt-m gy, f-mgr, sbplty, f-  
psrt, mod firm -modsft, arg cmt, vsl  
calc



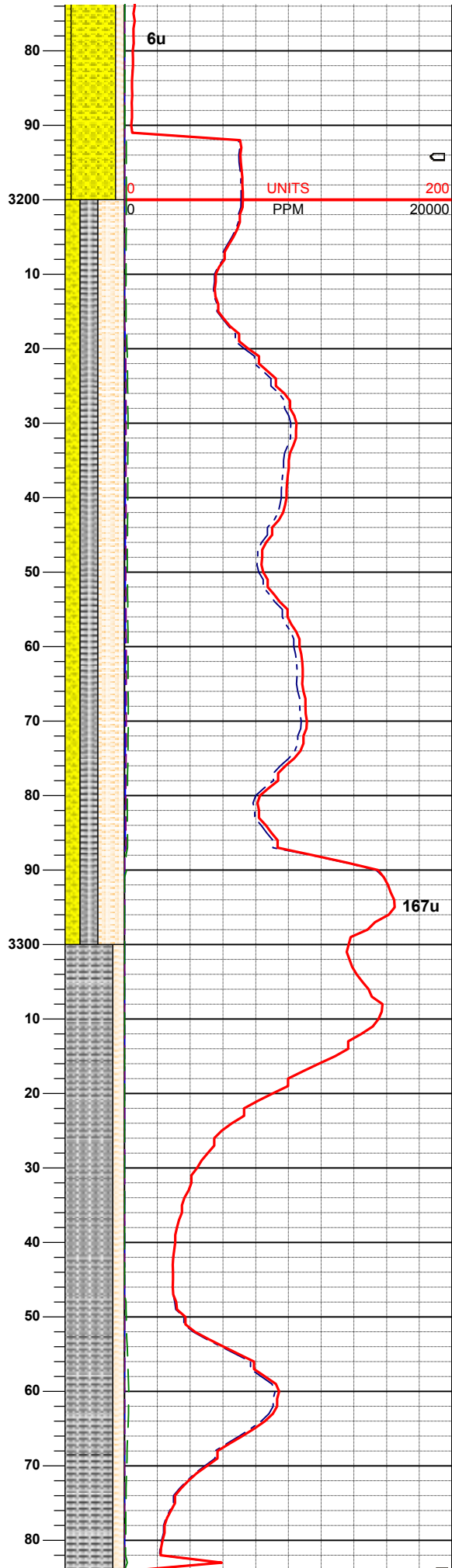
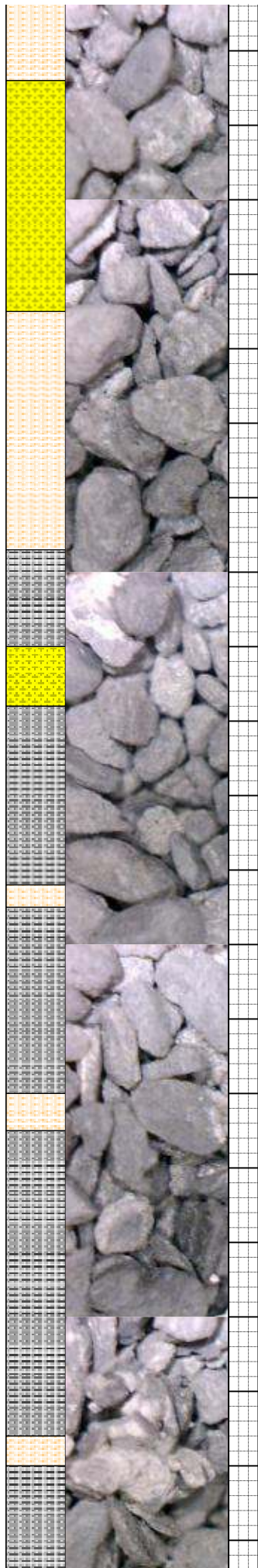
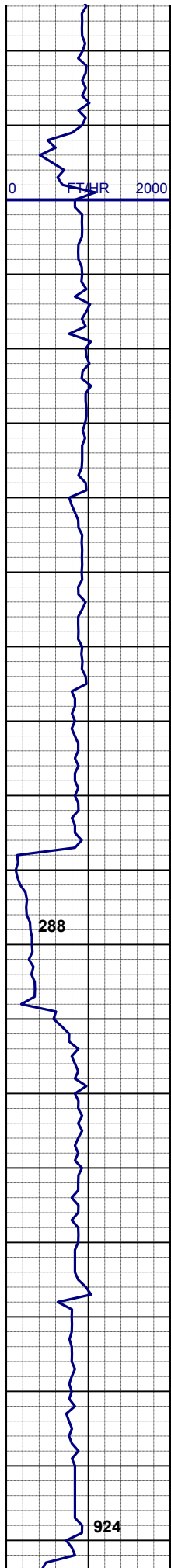


20% SHYSLTST: mgy, sl firm -  
modsf, sbplty-sbblky, slty-vsd, vsl  
calc

**SURVEY**  
**MD 3050'**  
**TVD 3043.93'**  
**INC 13.2°**  
**AZI 68.3°**

50% SS: wh, s&p, m-cgr, sb rd-sb  
plty, mod-fr srt, firm, fri-brit, arg cmt,  
m-vsl calc, mod por, glau; sme phlog  
35% SHYSS: lt-m gy, f-mgr, sbplty, f-  
psrt, mod firm -modsf, arg cmt, vsl  
calc  
15% SHYSLTST: mgy, sl firm -  
modsf, sbplty-sbblky, slty-vsd, vsl  
calc

**SURVEY**  
**MD 3145'**  
**TVD 3135.96'**  
**INC 15.1°**  
**AZI 67.6°**

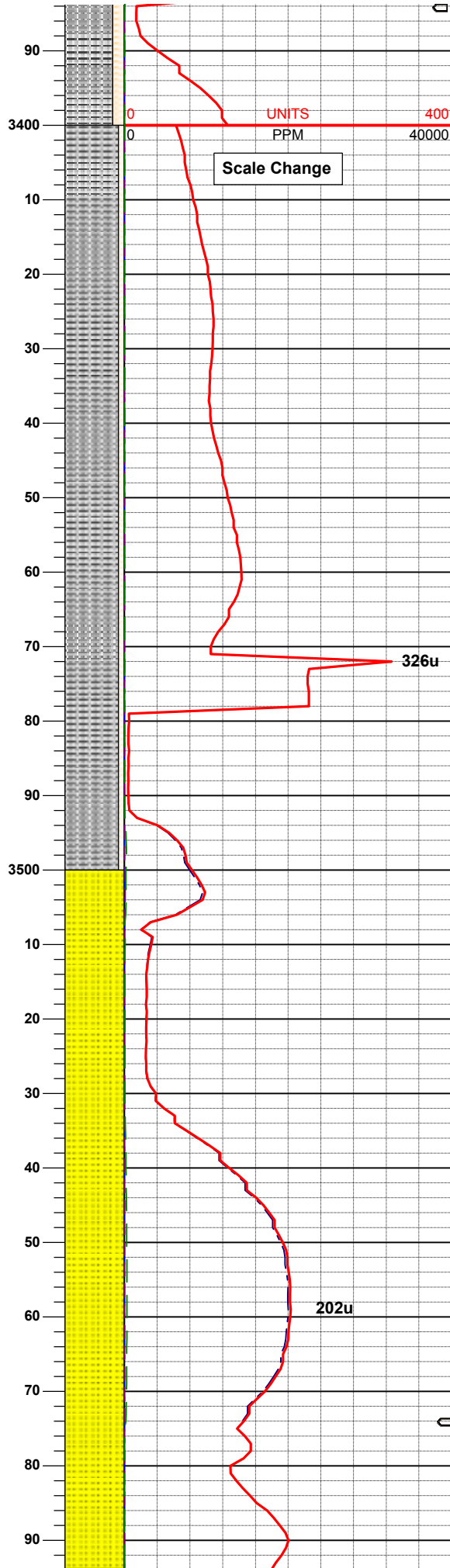
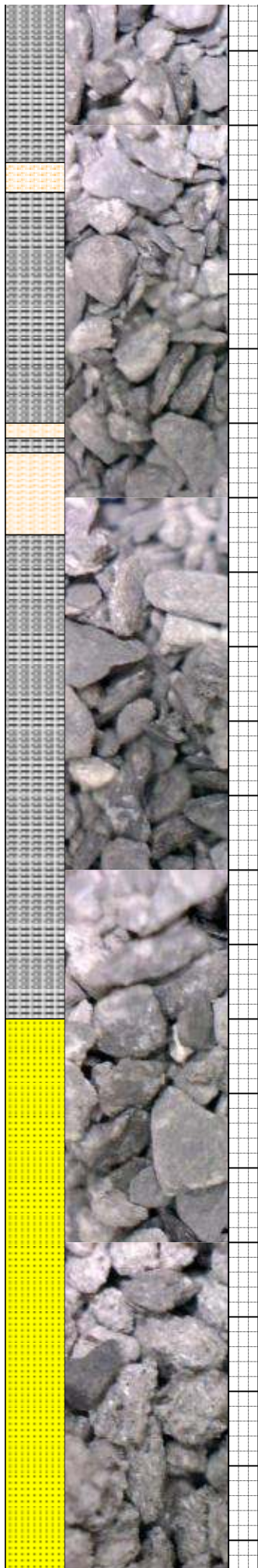
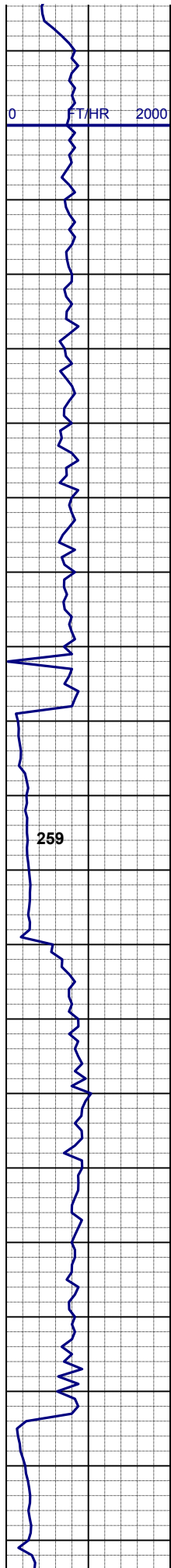


SURVEY  
MD 3240'  
TVD 3227.7'  
INC 14.6°  
AZI 67.4°

80%SLTYSH: mgy to vdkgy, sl firm -  
modsft, sbply-sbply, vsl calc, grdg to  
20% SLTST: mgy to dk gy, fgr, sbply  
to sbply, mod firm-modsft, vsl calc

MUD REPORT  
3382' MD  
Wt - 8.75  
Vis - 27





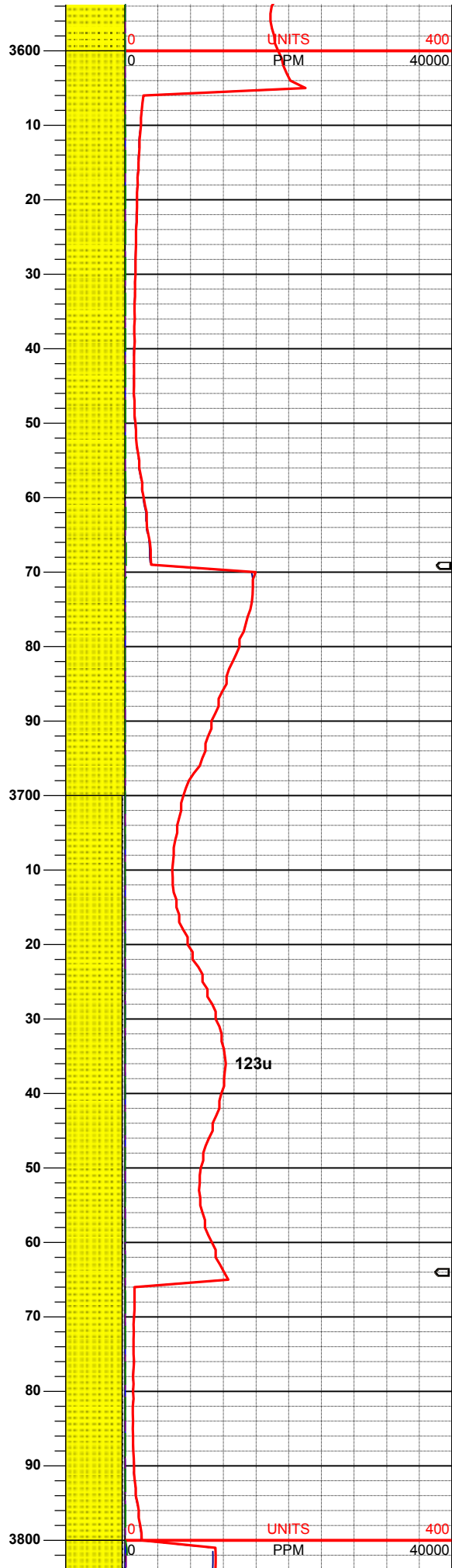
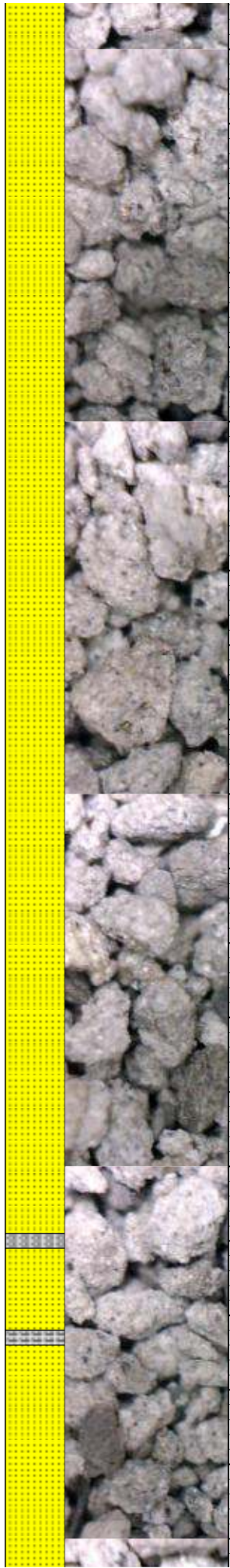
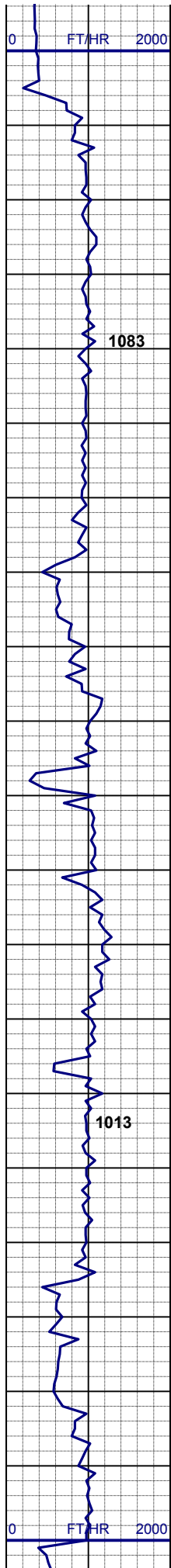
pH - 11.3  
YP - 4  
API flt -59.0  
Ck - 6/0

**SURVEY**  
MD 3430'  
TVD 3411.89'  
INC 12.1°  
AZI 64.2°

90%SLTYSH: mgy to vdkgy, sl firm -  
modsft, sbplty-sbblky, vsl calc, grdg to  
10% SLTST: mgy to dk gy, fgr, sbblky  
to sbplty, mod firm-modsft, vsl calc

**SURVEY**  
MD 3525'  
TVD 3504.55'  
INC 13.4°  
AZI 65.1°

100% SS: wh, s&p, m-cgr, sb rd-sb  
plty, mod-fr srt, firm, fri-brit, arg cmt,  
calc, mod por, glau; sme phlog



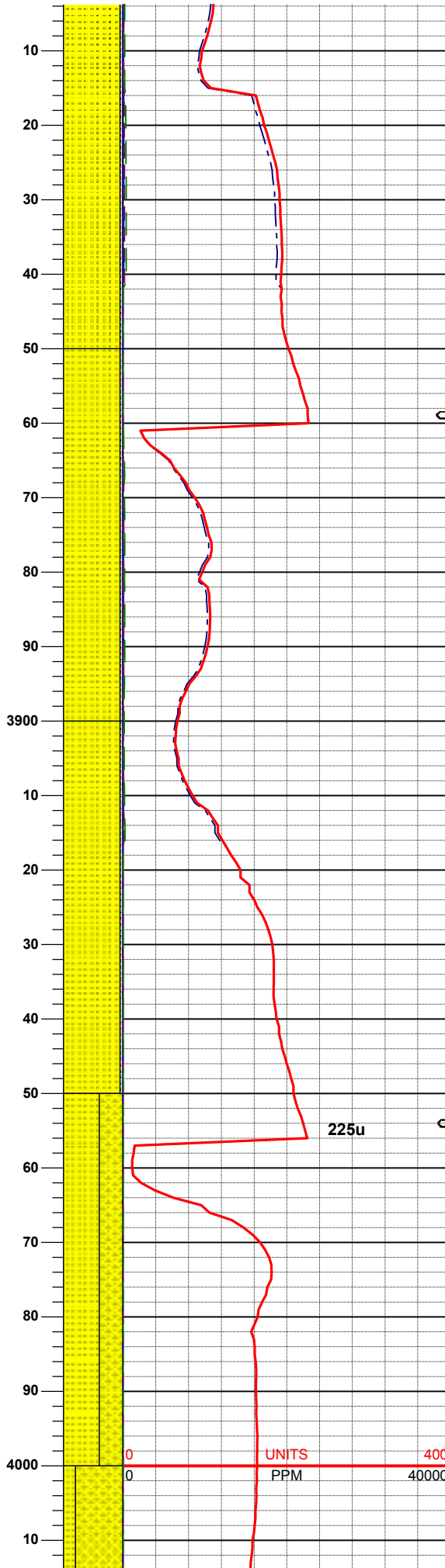
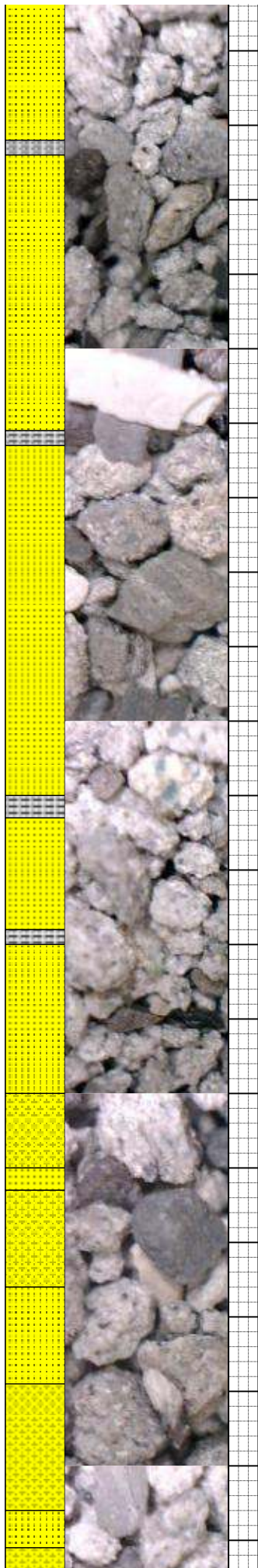
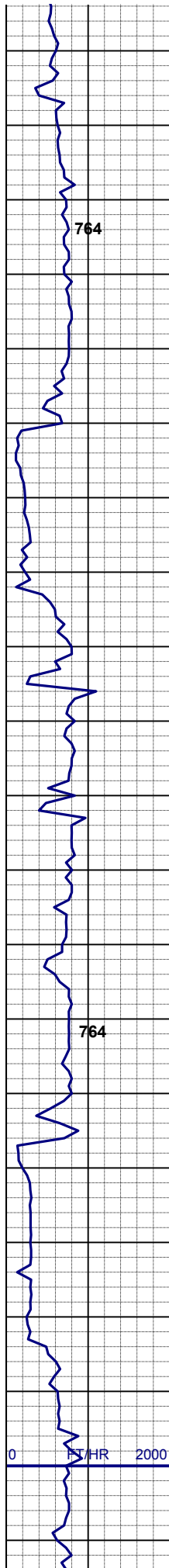
**SURVEY**  
**MD 3620'**  
**TVD 3596.48'**  
**INC 15.8°**  
**AZI 68.6°**

100% SS: wh, s&p, m-cgr, sb rd-sb  
plty, mod-fr srt, firm, fri-brit, arg cmt,  
calc, mod por, glau; sme phlog, tr  
siltysh

**SURVEY**  
**MD 3715'**  
**TVD 3687.61'**  
**INC 17.0°**  
**AZI 68.3°**

90% SS: wh, s&p, m-cgr, sb rd-sb  
plty, mod-fr srt, firm, fri-brit, arg cmt,  
calc, mod por, glau; sme phlog  
5% SLTYSH: mgy, sl firm -modsft,  
sbplty-sbblky, slty-vsdy, vsl calc





**SURVEY**  
**MD 3810'**  
**TVD 3778.36'**  
**INC 17.4°**  
**AZI 67.2°**

95% SS: wh, s&p, m-cgr, sb rd-sb  
plty, mod-fr srt, firm, fri-brit, arg cmt,  
calc, mod por, glau; sme phlog, sltyss  
5% SLTYSH: mgy, sl firm -modsft,  
sbplty-sbblky, slty-vsdy, vsl calc, tr  
bent

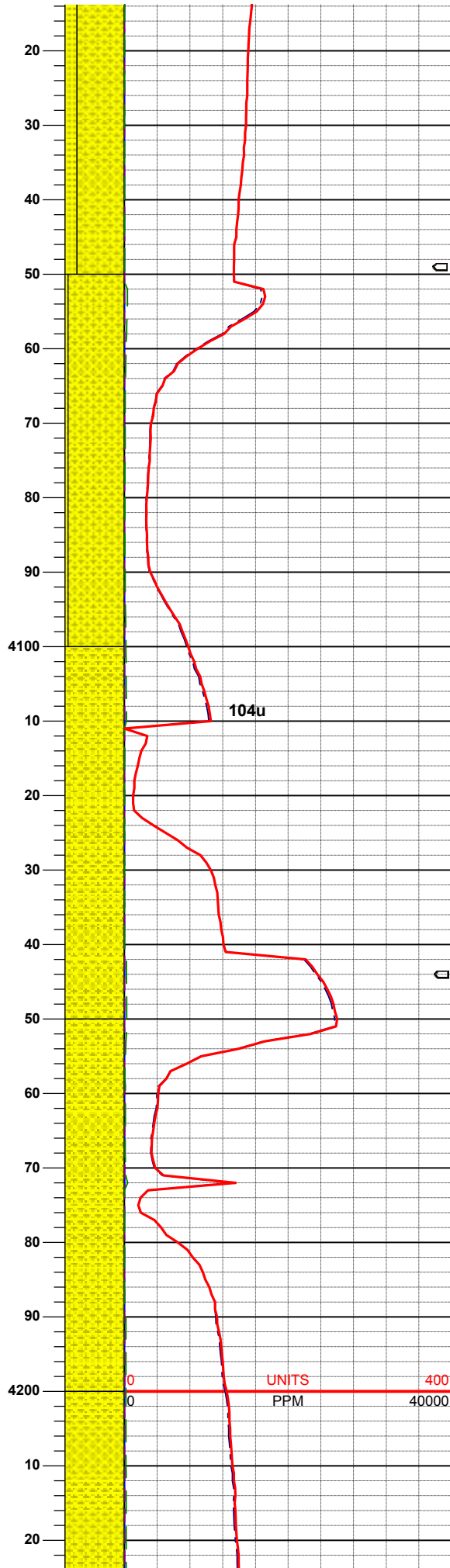
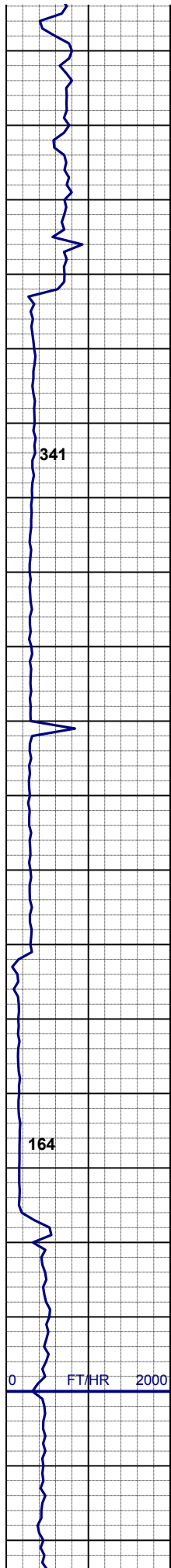
95% SS: wh, s&p, m-cgr, sb rd-sb  
plty, mod-fr srt, firm, fri-brit, arg cmt,  
calc, mod por, glau; sme phlog, sltyss  
5% SLTYSH: mgy, sl firm -modsft,  
sbplty-sbblky, slty-vsdy, vsl calc, tr  
bent

**SURVEY**  
**MD 3905'**  
**TVD 3868.97'**  
**INC 17.6°**  
**AZI 62.0°**

95% SS: wh, s&p, m-cgr, sb rd-sb  
plty, mod-fr srt, firm, fri-brit, arg cmt,  
calc, mod por, glau; sme phlog, sltyss  
5% SLTYSH: mgy, sl firm -modsft,  
sbplty-sbblky, slty-vsdy, vsl calc, tr  
bent

60% SS: wh, s&p, m-cgr, sb rd-sb  
plty, mod-fr srt, firm, fri-brit, arg cmt,  
calc, mod por, glau; sme phlog 40%  
SHYSS: lt-m gy, f-mgr, sbplty, f-psrt,  
mod firm -modsft, arg cmt, sl calc

**SURVEY**  
**MD 4000'**  
**TVD 3959.82'**  
**INC 16.4°**  
**AZI 60.5°**



80% SHYSS: lt-m gy, f-mgr, sbplty, f-psrt, mod firm -modsft, arg cmt, sl calc 20% SS: wh, s&p, m-cgr, sb rd-sb plty, mod-fr srt, firm, fri-brit, arg cmt, calc, mod por, glau; sme phlog

95% SHYSS: lt-m gy, f-mgr, sbplty, f-psrt, mod firm -modsft, arg cmt, calc 5% SS: wh, s&p, m-cgr, sb rd-sb plty, mod-fr srt, firm, fri-brit, arg cmt, calc, mod por, glau; sme phlog

**SURVEY**  
**MD 4095'**  
**TVD 4050.86'**  
**INC 16.8°**  
**AZI 60.9°**

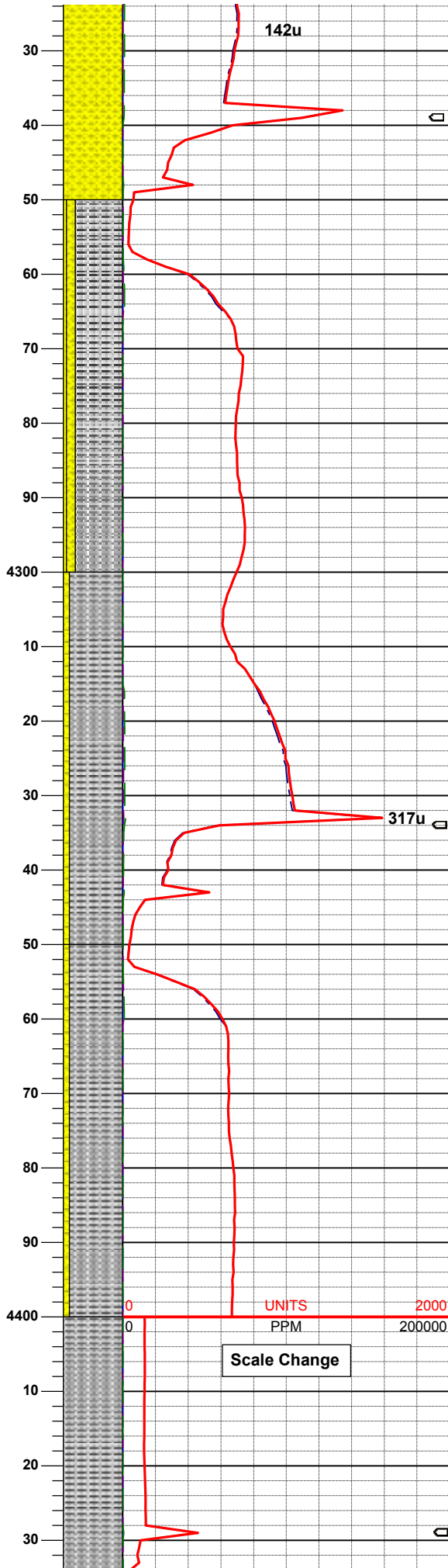
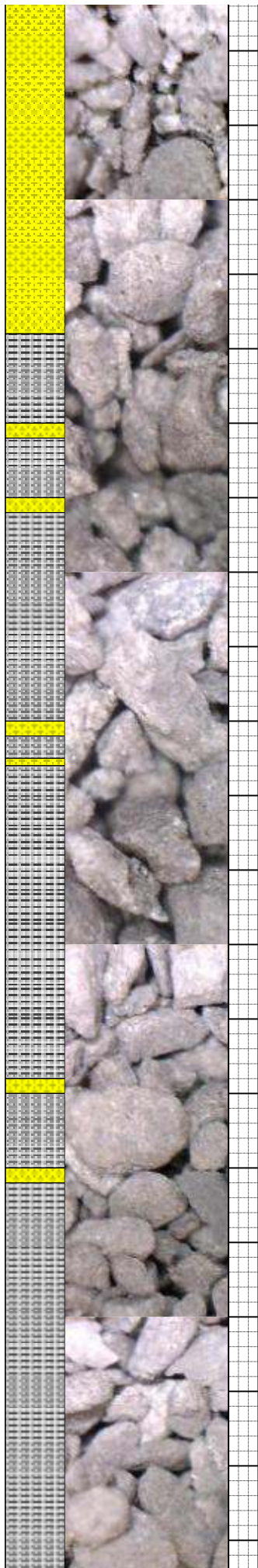
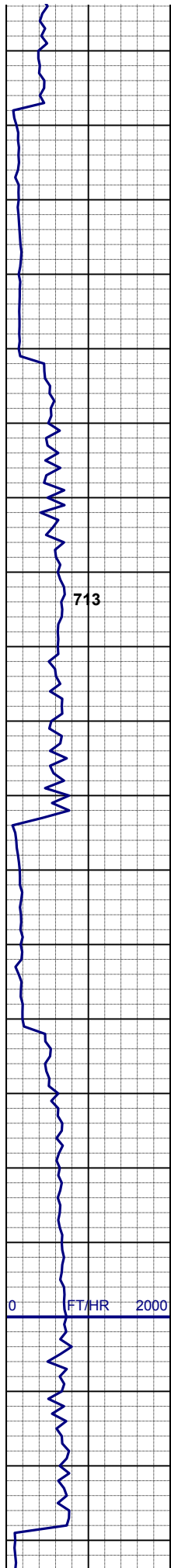
100% SHYSS: lt-m gy, f-mgr, sbplty, f-psrt, mod firm -modsft, arg cmt, calc, tr ss, tr sltysh

100% SHYSS: lt-m gy, f-mgr, sbplty, f-psrt, mod firm -modsft, arg cmt, calc, tr sltysh

**SURVEY**  
**MD 4190'**  
**TVD 4142.34'**  
**INC 14.5°**  
**AZI 66.3°**

100% SHYSS: lt-m gy, f-mgr, sbplty, f-psrt, mod firm -modsft, arg cmt, calc, tr sltysh





80% SLTYSH: gy to mgy, sl firm -  
modsf, sbply-sbblky, sdy, vs  
calc, 15% SHY:SS: ltgy, tan, pk brn to  
m gy, f-gr, sbply, f-psrt, mod firm -  
modsf, arg cmt, calc 5% SS: wh to lt  
gy, s&p, fgr, sbrd-sbply, mod-fr srt,  
firm, fri-brit, arg cmt, calc, mod por,  
glau; sme phlog

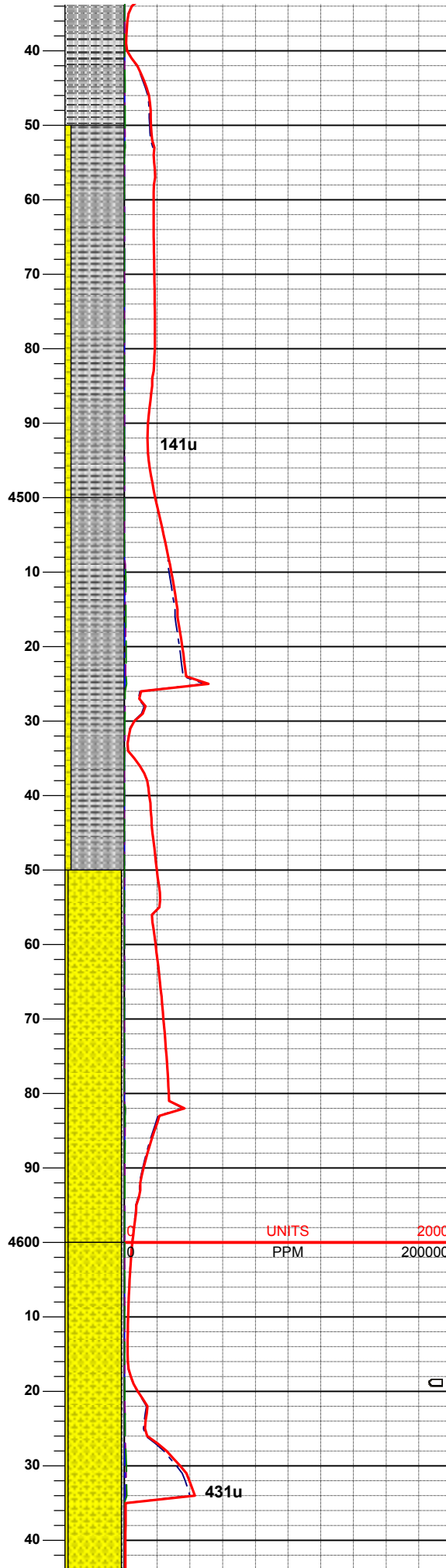
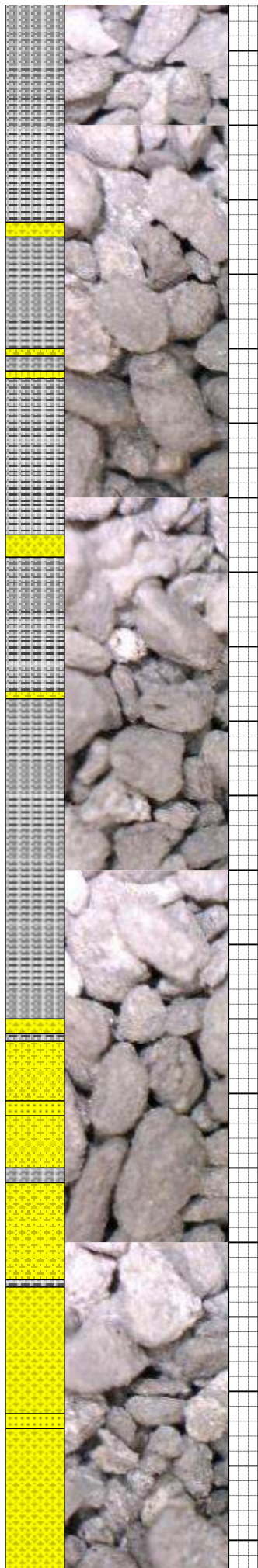
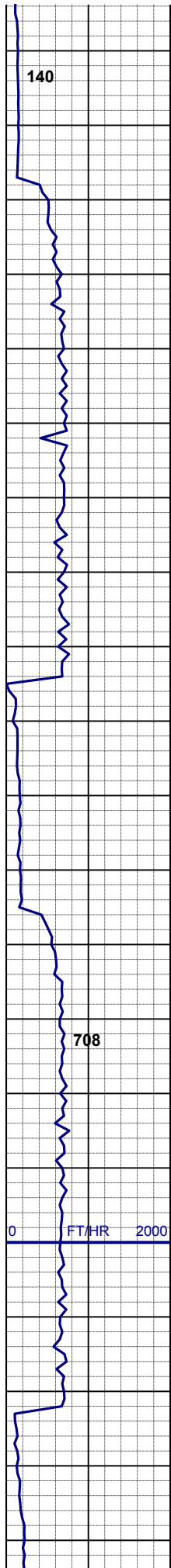
**SURVEY**  
**MD 4284'**  
**TVD 4234.04'**  
**INC 10.8°**  
**AZI 62.5°**

90% SLTYSH: gy to mgy, sl firm -  
modsf, sbply-sbblky, sdy, vs  
calc, 10% SHY:SS: ltgy, tan, pk brn to  
m gy, f-gr, sbply, f-psrt, mod firm -  
modsf, arg cmt, calc

90% SLTYSH: gy to mgy, sl firm -  
modsf, sbply-sbblky, sdy, vs  
calc, 10% SHY:SS: ltgy, tan, pk brn to  
m gy, f-gr, sbply, f-psrt, mod firm -  
modsf, arg cmt, calc

**SURVEY**  
**MD 4380'**  
**TVD 4328.80'**  
**INC 7.6°**  
**AZI 72.7°**

90% SLTYSH: gy to mgy, sl firm -  
modsf, sbply-sbblky, sdy, vs calc,



**SURVEY**  
**MD 4457'**  
**TVD 4423.23'**  
**INC 4.9°**  
**AZI 58.4°**

90% SLTYSH: gy to mgy, sl firm -  
modsft, sbplty-sbblky, sdy, vsl calc,  
10% SHY:SS: ltgy, tan, pk brn to m  
gy, f-gr, sbplty, f-psrt, mod firm -  
modsft, arg cmt, calc

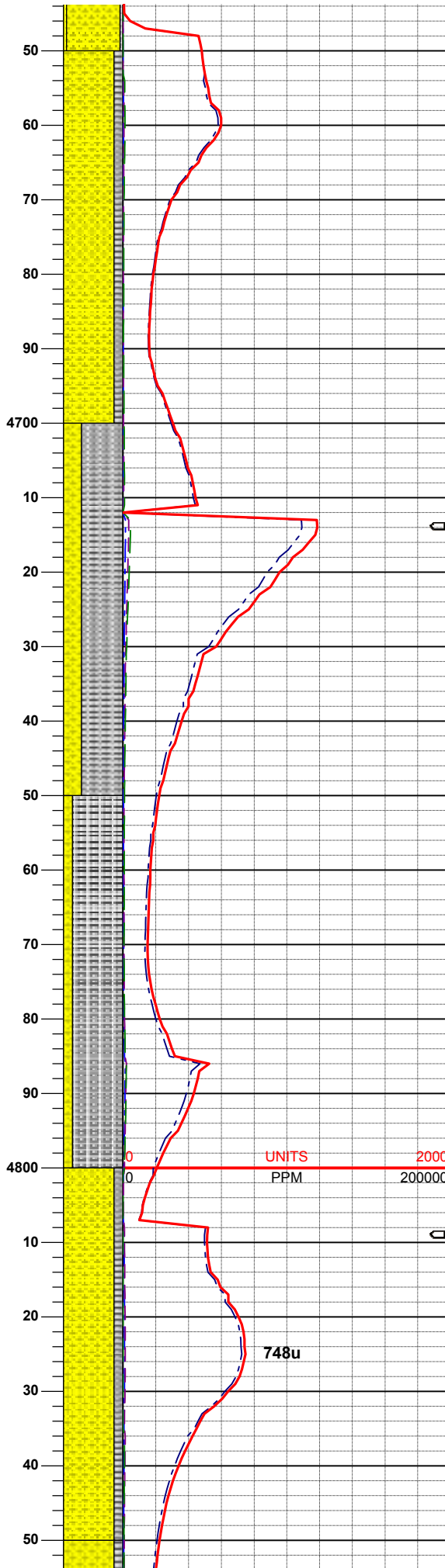
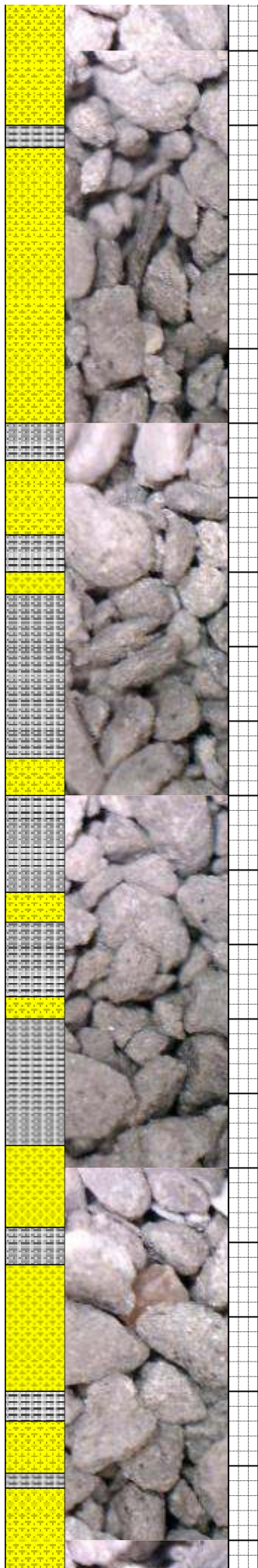
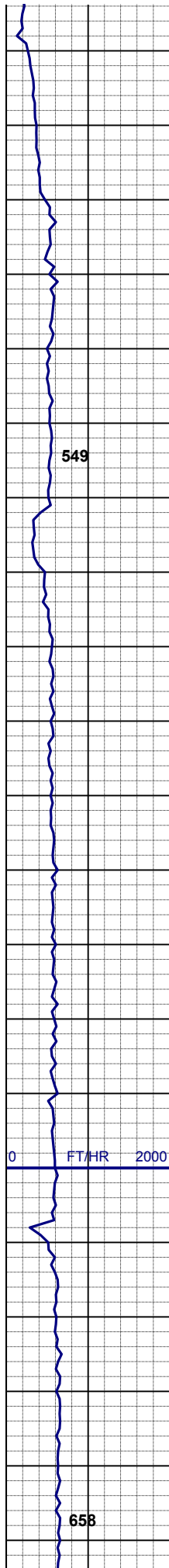
90% SLTYSH: gy to mgy, sl firm -  
modsft, sbplty-sbblky, sdy, vsl calc,  
10% SHY:SS: ltgy, tan, pk brn to m  
gy, f-gr, sbplty, f-psrt, mod firm -  
modsft, arg cmt, calc

90% SHY:SS: ltgy, tan, brn to m gy,  
fgr, sbplty, f-psrt, mod firm -modsft,  
arg cmt, calc  
5% SLTYSH: gy to mgy, sl firm -  
modsft, sbplty-sbblky, sdy, vsl calc,  
5% SS: wh, s&p, m-cgr, sb rd-sb plty,  
mod-fr srt, firm, fri-brit, arg cmt, calc,  
mod por, glau; sme phlog

**SURVEY**  
**MD 4569'**  
**TVD 4517.04'**  
**INC 2.2°**  
**AZI 63.0°**

90% SHY:SS: ltgy, tan, brn to m gy,  
fgr, sbplty, f-psrt, mod firm -modsft,  
arg cmt, calc  
5% SLTYSH: gy to mgy, sl firm -  
modsft, sbplty-sbblky, sdy, vsl calc,  
5% SS: wh, s&p, m-cgr, sb rd-sb plty,  
mod-fr srt, firm, fri-brit, arg cmt, calc,  
mod por, glau; sme phlog





**SURVEY**  
**MD 4664'**  
**TVD 4612.01'**  
**INC 0.4°**  
**AZI 65.5°**

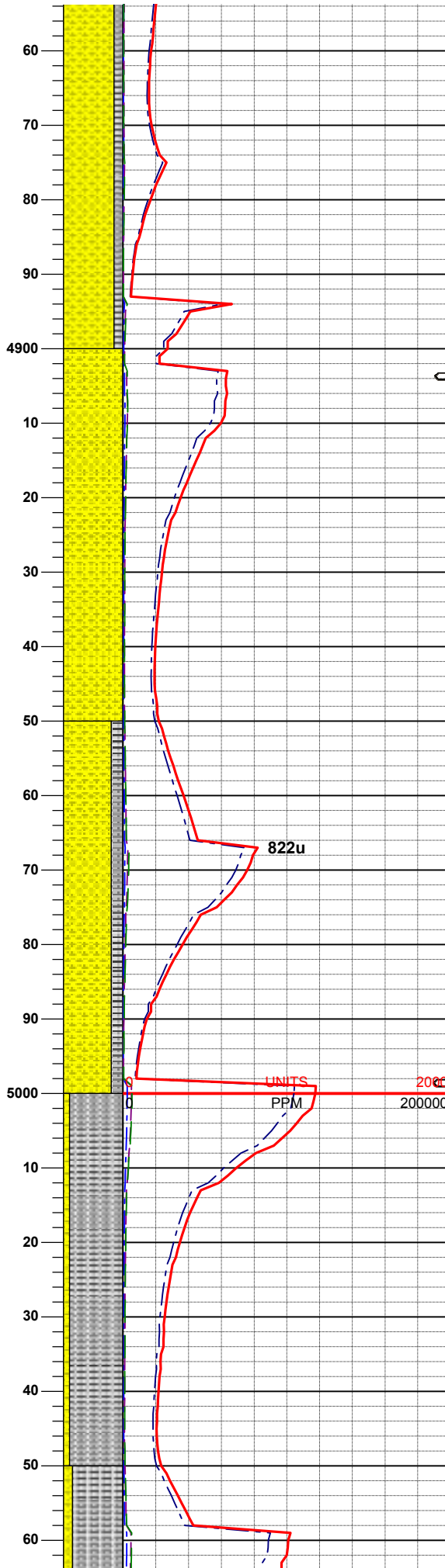
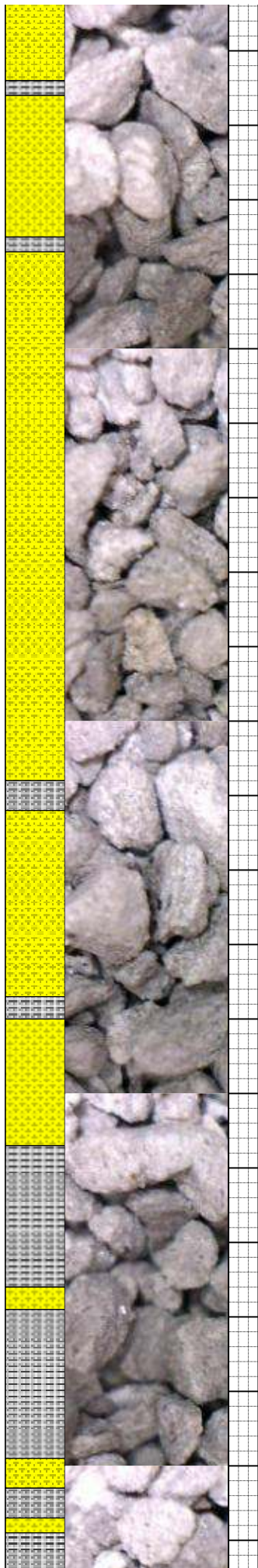
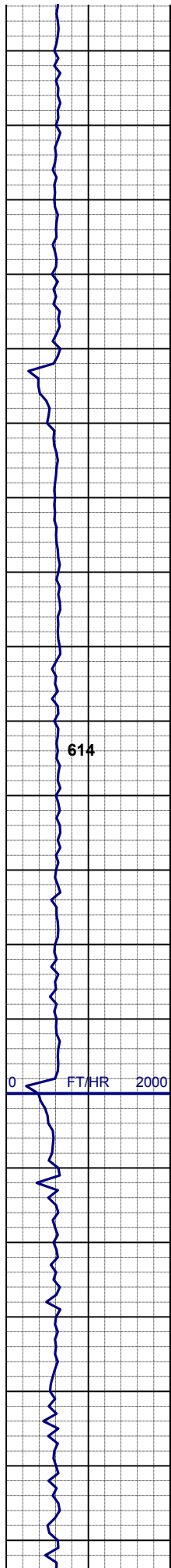
85% SHY:SS: ltgy, tan, brn to m gy, fgr, sbplty, f-psrt, mod firm -modsft, arg cmt, calc  
15% SLTYSH: gy to mgy, sl firm -modsft, sbplty-sbblky, sdy, vsl calc,

70% SLTYSH: gy to mgy, sl firm -modsft, sbplty-sbblky, sdy ip, vsl calc, 30% SHY:SS: ltgy, to m gy, fgr, sbplty, f-psrt, mod firm -modsft, arg cmt, calc

85% SLTYSH: gy to mgy, sl firm -modsft, sbplty-sbblky, sdy ip, vsl calc, 15% SHY:SS: ltgy, to m gy, fgr, sbplty, f-psrt, mod firm -modsft, arg cmt, calc

85% SHY:SS: ltgy, to m gy, fgr, sbplty, f-psrt, mod firm -modsft, arg cmt, calc  
15% SLTYSH: gy to mgy, sl firm -modsft, sbplty-sbblky, sdy ip, vsl calc,

**SURVEY**  
**MD 4854'**  
**TVD 4802.01'**  
**INC 0.5°**



INC 0.8°  
AZI 213.8°

85% SHY:SS: ltgy, to m gy, fgr,  
sbplty, f-psrt, mod firm -modsft, arg  
cmt, calc  
15% SLTYSH: gy to mgy, sl firm -  
modsft, sbplty-sbblky, sdy ip, vsl calc,

100% SHY:SS: ltgy, to m gy, fgr,  
sbplty, f-psrt, mod firm -modsft, arg  
cmt, calc

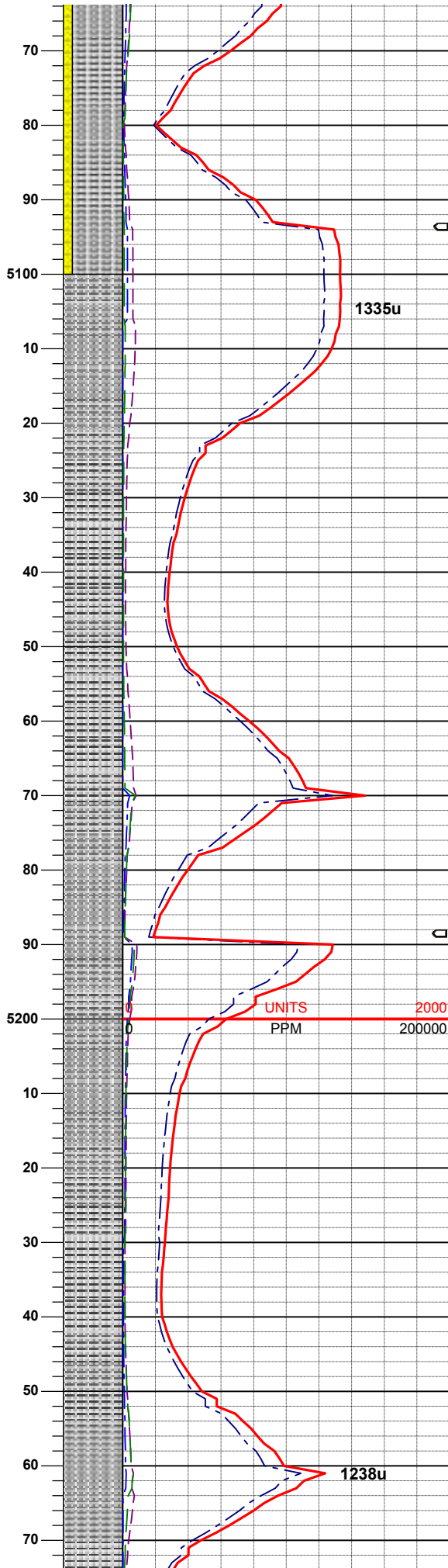
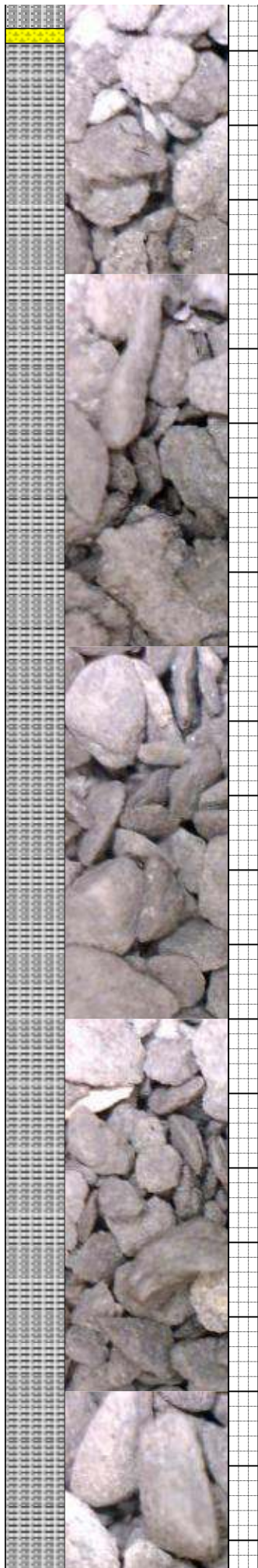
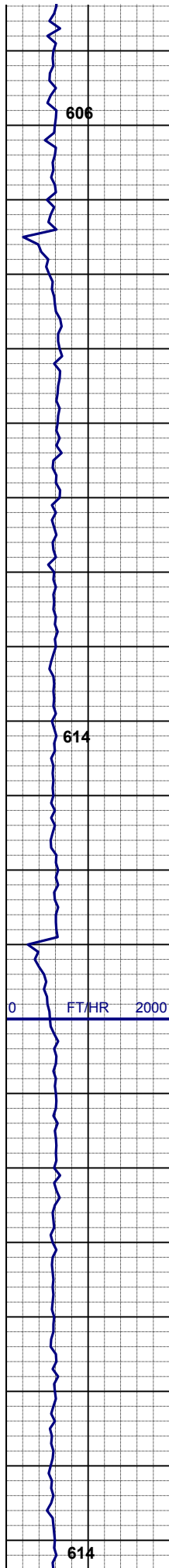
**SURVEY**  
**MD 4949'**  
**TVD 4897.0'**  
**INC 0.8°**  
**AZI 238.3°**

80% SHY:SS: ltgy, to m gy, fgr,  
sbplty, f-psrt, mod firm -modsft, arg  
cmt, calc  
20% SLTYSH: gy to mgy, sl firm -  
modsft, sbplty-sbblky, sdy ip, vsl calc,  
tr bent

90% SLTYSH: gy to mgy, sl firm -  
modsft, sbplty-sbblky, sdy ip, vsl calc,  
tr bent  
10% SHY:SS: ltgy, to m gy, fgr,  
sbplty, f-psrt, mod firm -modsft, arg  
cmt, calc

**SURVEY**  
**MD 5044'**  
**TVD 4992.0'**  
**INC 0.8°**  
**AZI 278.3°**





85% SLTYSH: gy to mgy, sl firm -  
modsft, sbply-sbblky, sdy ip, vsl calc,  
tr bent  
15% SHY:SS: ltgy, to m gy, fgr,  
sbply, f-psrt, mod firm -modsft, arg  
cmt, calc

100% SLTYSH: gy to mgy, sl firm -  
modsft, sbply-sbblky, sdy ip, vsl calc,  
tr bent, tr sltyss

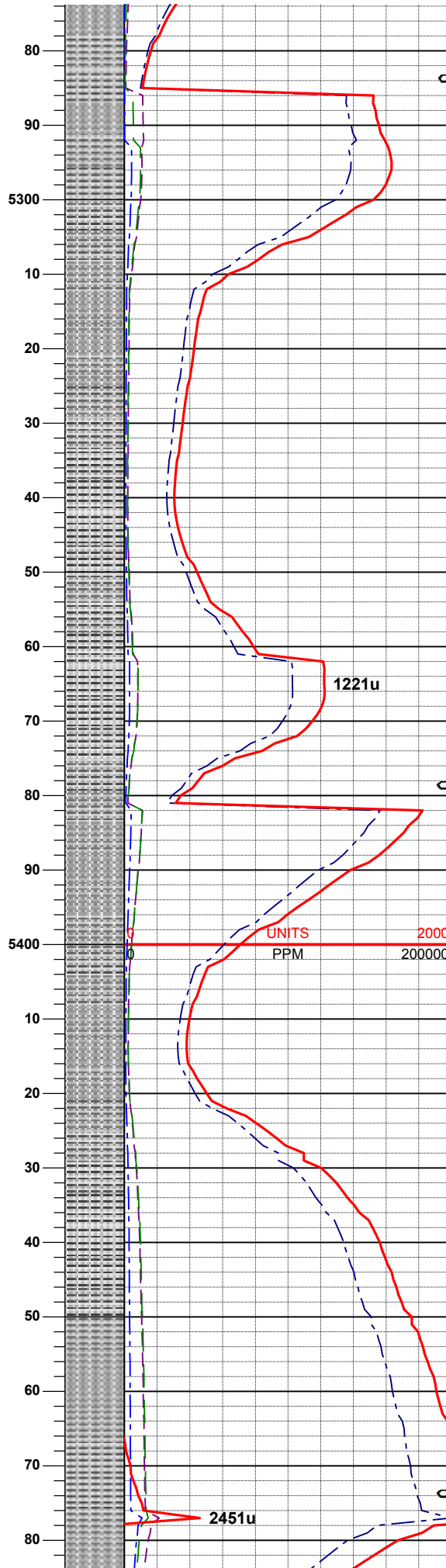
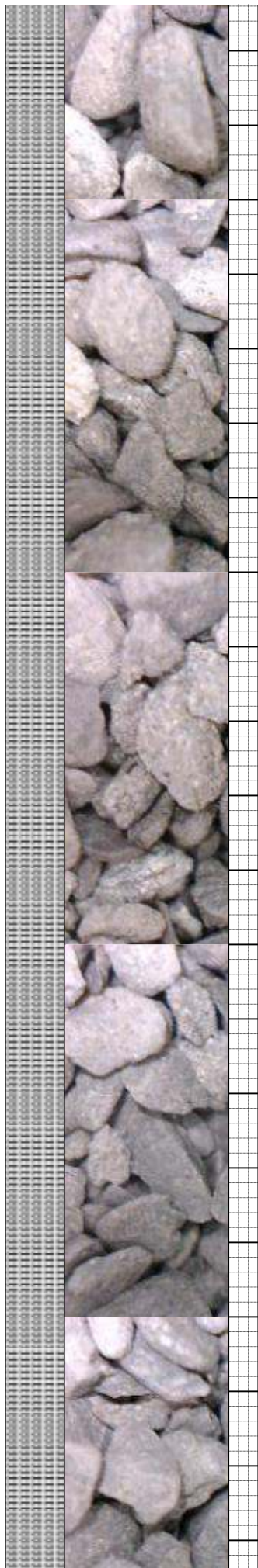
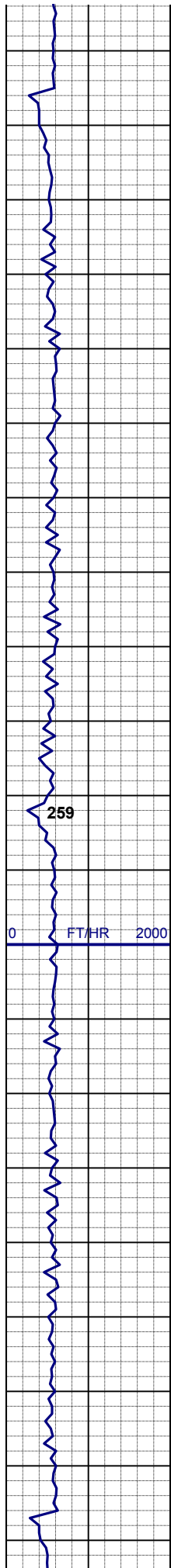
**SURVEY**  
**MD 5139'**  
**TVD 5086.98'**  
**INC 1.0°**  
**AZI 286.6°**

100% SLTYSH: gy to mgy, sl firm -  
modsft, sbply-sbblky, sdy ip, vsl calc,  
tr bent, tr sltyss

100% SLTYSH: gy to mgy, sl firm -  
modsft, sbply-sbblky, sdy ip, vsl calc,  
tr bent, tr sltyss

**SURVEY**  
**MD 5234'**  
**TVD 5181.97'**  
**INC 1.2°**  
**AZI 289.4°**

100% SLTYSH: gy to mgy, sl firm -  
modsft, sbply-sbblky, sdy ip, vsl calc,  
tr bent, tr sltyss



100% SLTYSH: gy to mgy, sl firm -  
modsf, sbply-sbblky, sdy ip, vsl calc,  
tr bent, tr sltyss

**SURVEY**  
**MD 5329'**  
**TVD 5276.95'**  
**INC 1.1°**  
**AZI 310.5°**

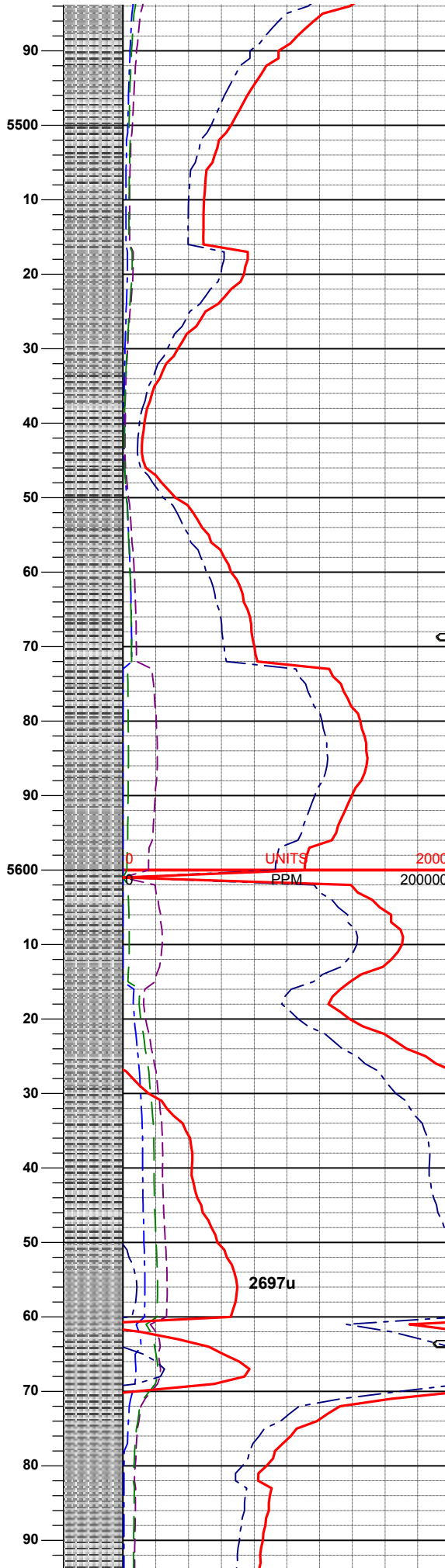
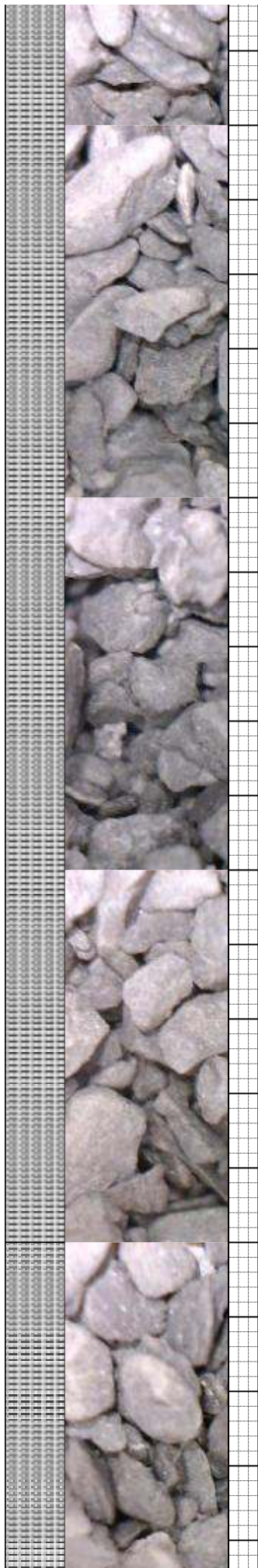
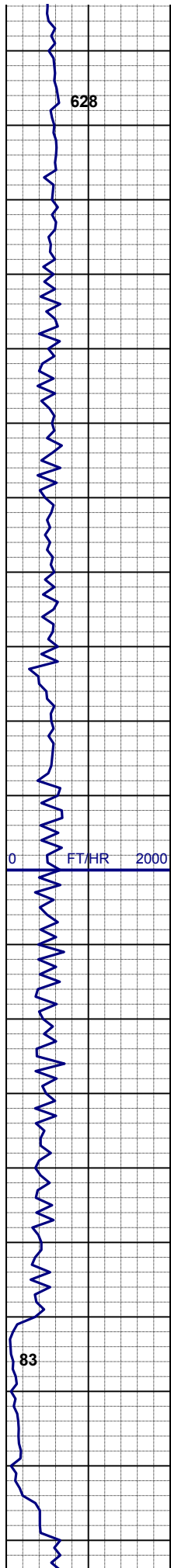
100% SLTYSH: gy to mgy, sl firm -  
modsf, sbply-sbblky, vsl calc, tr bent

100% SLTYSH: gy to mgy, sl firm -  
modsf, sbply-sbblky, vsl calc, tr bent

**SURVEY**  
**MD 5424'**  
**TVD 5371.93'**  
**INC 1.2°**  
**AZI 311.6°**

100% SLTYSH: gy to dkgy, sl firm -  
modsf, sbply-sbblky, slky, vsl calc, tr  
bent





**SURVEY**  
**MD 5519'**  
**TVD 5466.91'**  
**INC 1.2°**  
**AZI 313.5°**

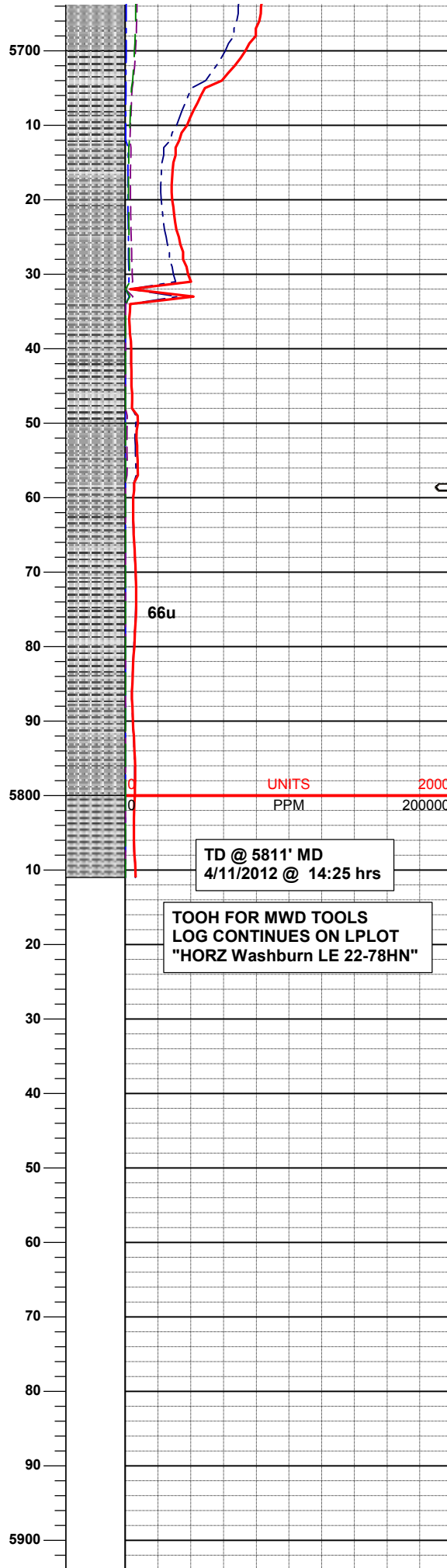
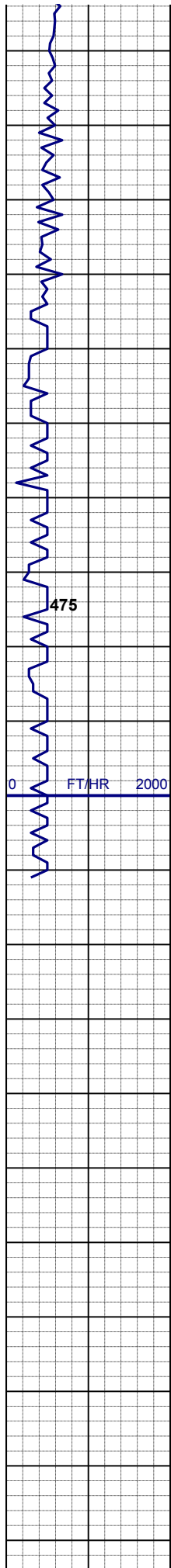
100% SLTYSH: gy to dkgy, sl firm -  
modsf, sbplty-sbblky, slky, vsl calc, tr  
bent, ls, ss

100% SLTYSH: gy to dkgy, sl firm -  
modsf, sbplty-sbblky, slky, vsl calc

**SURVEY**  
**MD 5614'**  
**TVD 5561.89'**  
**INC 1.2°**  
**AZI 334.6°**

100% SLTYSH: gy to dkgy, sl firm -  
modsf, sbplty-sbblky, slky, vsl calc

100% SLTYSH: gy to dkgy, sl firm -  
modsf, sbplty-sbblky, slky, vsl calc, tr  
bent, ls



**SURVEY**  
**MD 5709'**  
**TVD 5656.88'**  
**INC 0.2°**  
**AZI 207.0°**

100% SLTYSH: gy to dkgy, sl firm -  
modsf, sbplty-sbblky, slky, sme sdy,  
vsl calc

**SURVEY**  
**MD 5763'**  
**TVD 5710.88'**  
**INC 0.2°**  
**AZI 296.6°**

100% SLTYSH: gy to dkgy, sl firm -  
modsf, sbplty-sbblky, slky, sme sdy,  
vsl calc

**MUD REPORT**  
**5811' MD**  
**Wt - 9.10**  
**Vis - 33**  
**pH - 9.9**  
**YP - 4**  
**API flt -22.5**  
**Ck - 2/0**

Thank You for Using  
Columbine Logging Inc.



