

---

**WPX ENERGY ROCKY MOUNTAIN LLC-EBUS**

---

**SG 533-23  
GRAND VALLEY  
Garfield County , Colorado**

**Cement Surface Casing**  
**07-Feb-2013**

**Post Job Summary**

## The Road to Excellence Starts with Safety

<b>Sold To #:</b> 300721		<b>Ship To #:</b> 2979301		<b>Quote #:</b>		<b>Sales Order #:</b> 900198494	
<b>Customer:</b> WPX ENERGY ROCKY MOUNTAIN LLC-EBUS				<b>Customer Rep:</b> Moore, Frank			
<b>Well Name:</b> SG			<b>Well #:</b> 533-23			<b>API/UWI #:</b> 05-045-21688	
<b>Field:</b> GRAND VALLEY		<b>City (SAP):</b> PARACHUTE		<b>County/Parish:</b> Garfield		<b>State:</b> Colorado	
<b>Lat:</b> N 39.419 deg. OR N 39 deg. 25 min. 8.62 secs.				<b>Long:</b> W 108.07 deg. OR W -109 deg. 55 min. 46.268 secs.			
<b>Contractor:</b> CYCLONE 17			<b>Rig/Platform Name/Num:</b> CYCLONE 17				
<b>Job Purpose:</b> Cement Surface Casing							
<b>Well Type:</b> Development Well			<b>Job Type:</b> Cement Surface Casing				
<b>Sales Person:</b> MAYO, MARK			<b>Srvc Supervisor:</b> ARNOLD, EDWARD			<b>MBU ID Emp #:</b> 439784	

### Job Personnel

HES Emp Name	Exp Hrs	Emp #	HES Emp Name	Exp Hrs	Emp #	HES Emp Name	Exp Hrs	Emp #
ARNOLD, EDWARD John	8.5	439784	ROSE, BENJAMIN Keith	8.5	487022	SALAZAR, PAUL Omar	8.5	445614
SINCLAIR, DAN J	8.5	338784						

### Equipment

HES Unit #	Distance-1 way	HES Unit #	Distance-1 way	HES Unit #	Distance-1 way	HES Unit #	Distance-1 way
10713212	60 mile	10871245	60 mile	11259882	60 mile	11360871	60 mile
11808831	60 mile						

### Job Hours

Date	On Location Hours	Operating Hours	Date	On Location Hours	Operating Hours	Date	On Location Hours	Operating Hours
02-06-2013	3.5	0	02-07-2013	5	4			

**TOTAL** Total is the sum of each column separately

### Job

Formation Name	Formation Depth (MD)	Top	Bottom	Form Type	Job depth MD	Job Depth TVD	Water Depth	Perforation Depth (MD)	From	To
				BHST	1056. ft	1056. ft				
						6. ft				

### Job Times

Date	Time	Time Zone
06 - Feb - 2013	17:00	MST
06 - Feb - 2013	20:30	MST
07 - Feb - 2013	03:05	MST
07 - Feb - 2013	04:00	MST
07 - Feb - 2013	05:00	MST

### Well Data

Description	New / Used	Max pressure psig	Size in	ID in	Weight lbm/ft	Thread	Grade	Top MD ft	Bottom MD ft	Top TVD ft	Bottom TVD ft
-------------	------------	-------------------	---------	-------	---------------	--------	-------	-----------	--------------	------------	---------------

### Sales/Rental/3<sup>rd</sup> Party (HES)

Description	Qty	Qty uom	Depth	Supplier
PLUG,CMTG,TOP,9 5/8,HWE,8.16 MIN/9.06 MA	1	EA		

### Tools and Accessories

Type	Size	Qty	Make	Depth	Type	Size	Qty	Make	Depth	Type	Size	Qty	Make
Guide Shoe					Packer					Top Plug	9.625	1	HES
Float Shoe					Bridge Plug					Bottom Plug			
Float Collar					Retainer					SSR plug set			
Insert Float										Plug Container	9.625	1	HES
Stage Tool										Centralizers			

### Miscellaneous Materials

Gelling Agt	Conc	Surfactant	Conc	Acid Type	Qty	Conc	%
Treatment Fld	Conc	Inhibitor	Conc	Sand Type	Size	Qty	

### Fluid Data

Fluid Data									
Stage/Plug #: 1									
Fluid #	Stage Type	Fluid Name	Qty	Qty uom	Mixing Density lbm/gal	Yield ft3/sk	Mix Fluid Gal/sk	Rate bbl/min	Total Mix Fluid Gal/sk

Stage/Plug #: 1									
Fluid #	Stage Type	Fluid Name	Qty	Qty uom	Mixing Density lbm/gal	Yield ft <sup>3</sup> /sk	Mix Fluid Gal/sk	Rate bbl/min	Total Mix Fluid Gal/sk
1	Fresh Water Spacer		20.00	bbl	.	.0	.0	4	
2	Tail Cement	VERSACEM (TM) SYSTEM (452010)	290.0	sacks	12.8	2.11	11.75	8	11.75
11.75 Gal		FRESH WATER							
3	Fresh Water Displacement		78.00	bbl	8.33	.0	.0	10	
Calculated Values		Pressures		Volumes					
Displacement	78.1	Shut In: Instant		Lost Returns		Cement Slurry	108.9	Pad	
Top Of Cement	SURFACE	5 Min		Cement Returns	20	Actual Displacement	78.1	Treatment	
Frac Gradient		15 Min		Spacers	20	Load and Breakdown		Total Job	207
Rates									
Circulating	RIG	Mixing	8	Displacement	10	Avg. Job	8		
Cement Left In Pipe	Amount	47.6 FT	Reason	Shoe Joint					
Frac Ring # 1 @	ID	Frac ring # 2 @	ID	Frac Ring # 3 @	ID	Frac Ring # 4 @	ID		
The Information Stated Herein Is Correct				Customer Representative Signature					

*The Road to Excellence Starts with Safety*

<b>Sold To #:</b> 300721		<b>Ship To #:</b> 2979301		<b>Quote #:</b>		<b>Sales Order #:</b> 900198494	
<b>Customer:</b> WPX ENERGY ROCKY MOUNTAIN LLC-EBUS				<b>Customer Rep:</b> Moore, Frank			
<b>Well Name:</b> SG			<b>Well #:</b> 533-23			<b>API/UWI #:</b> 05-045-21688	
<b>Field:</b> GRAND VALLEY		<b>City (SAP):</b> PARACHUTE		<b>County/Parish:</b> Garfield		<b>State:</b> Colorado	
<b>Legal Description:</b>							
<b>Lat:</b> N 39.419 deg. OR N 39 deg. 25 min. 8.62 secs.				<b>Long:</b> W 108.07 deg. OR W -109 deg. 55 min. 46.268 secs.			
<b>Contractor:</b> CYCLONE 17			<b>Rig/Platform Name/Num:</b> CYCLONE 17				
<b>Job Purpose:</b> Cement Surface Casing						<b>Ticket Amount:</b>	
<b>Well Type:</b> Development Well			<b>Job Type:</b> Cement Surface Casing				
<b>Sales Person:</b> MAYO, MARK			<b>Srvc Supervisor:</b> ARNOLD, EDWARD			<b>MBU ID Emp #:</b> 439784	

Activity Description	Date/Time	Cht #	Rate bbl/min	Volume bbl		Pressure psig		Comments
				Stage	Total	Tubing	Casing	
Call Out	02/06/2013 17:00							Crew called out.
Pre-Convoy Safety Meeting	02/06/2013 18:45							Including entire cement crew, discuss hazards, route, and safety.
Crew Leave Yard	02/06/2013 19:00							Leave yard for location.
Arrive At Loc	02/06/2013 20:30							Rig still drilling. Customer called and moved on location to 2200.
Assessment Of Location Safety Meeting	02/07/2013 01:30							Including entire cement crew, discussed hazards, and rig up.
Pre-Rig Up Safety Meeting	02/07/2013 01:45							
Rig-Up Equipment	02/07/2013 02:00							1 Elite #8; 1 660 Bulk Truck; 1 hard line to rig floor; 2 lines to upright; 1 9 5/8" compact head.
Rig-Up Completed	02/07/2013 02:45							
Pre-Job Safety Meeting	02/07/2013 02:50							Including everyone on location. Discussed hazards, emergency situations, and job procedure.
Start Job	02/07/2013 03:05							TD 1056; TP 1040.1; SJ 47.6; OH 13 1/2"; CASING 9 5/8" 32.3# H-40; MUD 9.4PPG.
Pump Water	02/07/2013 03:06		0	2			50.0	Fresh water ahead to fill lines.
Activity Description	Date/Time	Cht #	Rate bbl/min	Volume bbl		Pressure psig		Comments
				Stage	Total	Tubing	Casing	

Sold To # : 300721

Ship To # :2979301

Quote # :

Sales Order # : 900198494

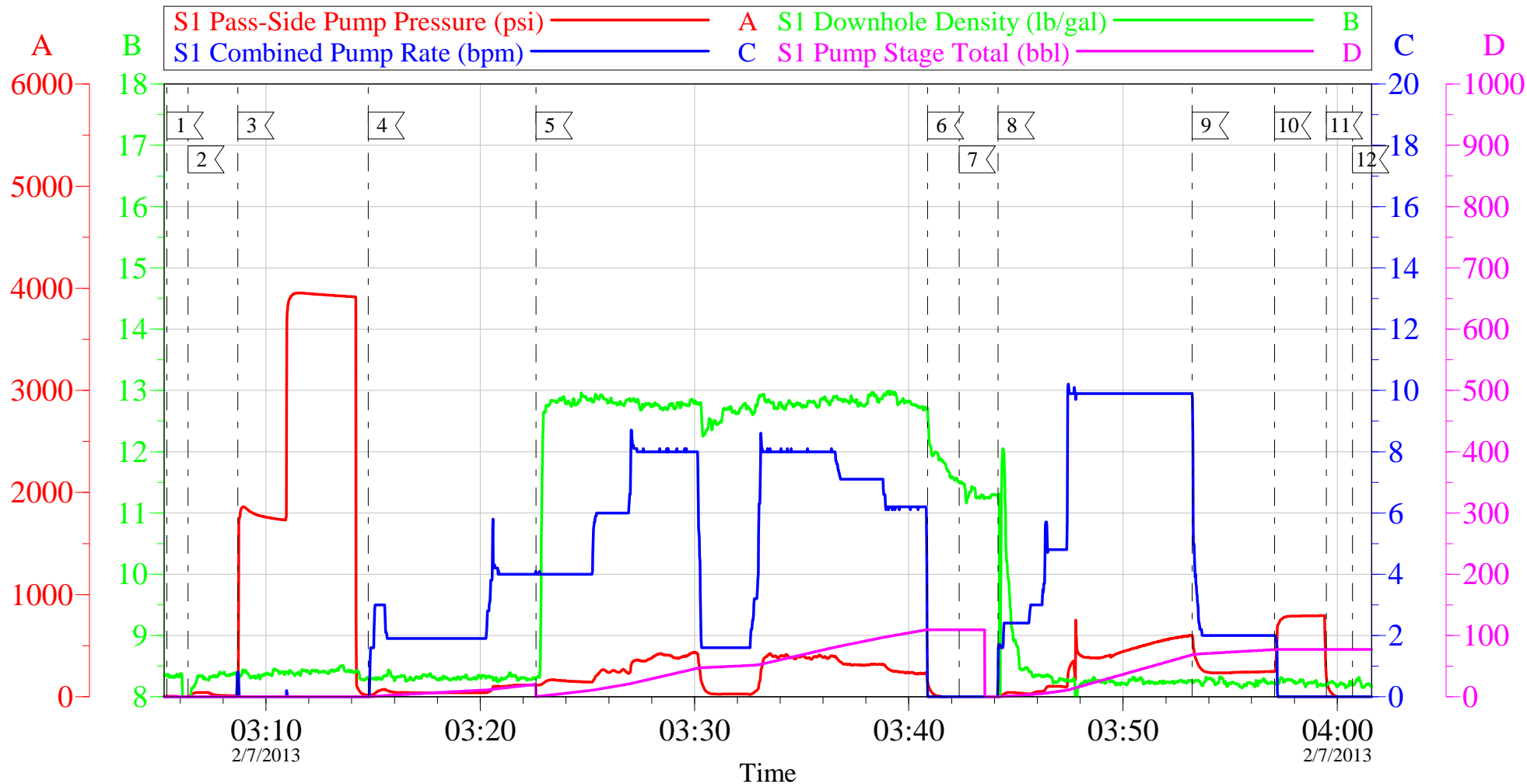
SUMMIT Version: 7.3.0076

Sunday, February 10, 2013 09:08:00

Test Lines	02/07/2013 03:08					3985. 0		Test line to 3985 psi, Found no leaks, good test. Low pressure test at 1896.
Pump Spacer 1	02/07/2013 03:14		4	20			50.0	20 BBL's fresh water.
Pump Tail Cement	02/07/2013 03:22		8	108.9			407.0	290 sks Tail cement, 12.8 ppg, 2.11 cf3, 11.75 gal/sk. Had a bad swap on cement and had to slow down.
Shutdown	02/07/2013 03:40							
Drop Plug	02/07/2013 03:42							Plug left Container.
Pump Displacement	02/07/2013 03:44		10	68.1			600.0	Fresh water displacement.
Slow Rate	02/07/2013 03:53		2	10			244.0	Slow rate last 10 BBL's of displacement prior to bumping the plug.
Bump Plug	02/07/2013 03:57				78.1		792.0	Plug landed. Took to 792 psi.
Check Floats	02/07/2013 03:59							Floats Held. 1/2 BBL's back. 20 BBL's of good cement to surface. Used 40# sugar.
End Job	02/07/2013 04:00							
Pre-Rig Down Safety Meeting	02/07/2013 04:10							Including entire cement crew, discussed hazards and safety.
Rig-Down Equipment	02/07/2013 04:15							
Pre-Convoy Safety Meeting	02/07/2013 04:55							Including entire cement crew, discussed hazards, route, and safety.
Crew Leave Location	02/07/2013 05:00							
Other	02/07/2013 05:00							Thank You for using Halliburton, Ed Arnold and Crew.

# WPX - SG 533-23

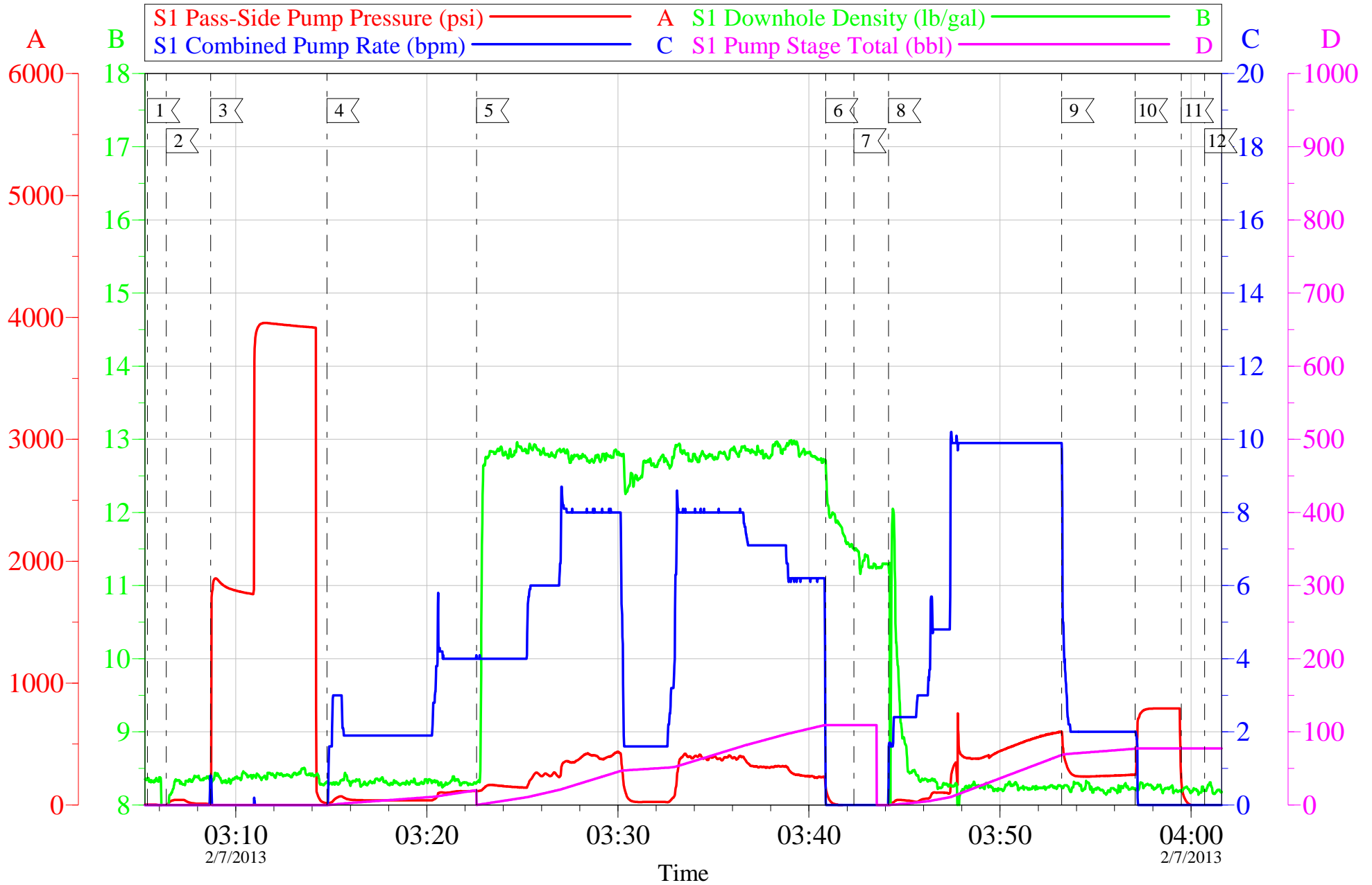
9 5/8" SURFACE



Customer: WPX	Job Date: 07-Feb-2013	Sales Order #: 900198494
Well Description: SG 533-23	Job Type: SURFACE	ADC Used: YES
Company Rep: AL DUNNAHOO	Cement Supervisor: ED ARNOLD	Elite #8: PAUL SALAZAR

# WPX - SG 533-23

9 5/8" SURFACE



Customer: WPX	Job Date: 07-Feb-2013	Sales Order #: 900198494
Well Description: SG 533-23	Job Type: SURFACE	ADC Used: YES
Company Rep: AL DUNNAHOO	Cement Supervisor: ED ARNOLD	Elite #8: PAUL SALAZAR

OptiCem v6.4.10  
07-Feb-13 04:03

<b>Sales Order #:</b> 900198494	<b>Line Item:</b> 10	<b>Survey Conducted Date:</b> 2/7/2013
<b>Customer:</b> WPX ENERGY ROCKY MOUNTAIN LLC-EBUS		<b>Job Type (BOM):</b> CMT SURFACE CASING BOM
<b>Customer Representative:</b> AL DUNNAHOO		<b>API / UWI: (leave blank if unknown)</b> 05-045-21688
<b>Well Name:</b> SG		<b>Well Number:</b> 533-23
<b>Well Type:</b> Development Well	<b>Well Country:</b> United States of America	
<b>H2S Present:</b> No	<b>Well State:</b> Colorado	<b>Well County:</b> Garfield

Dear Customer,

We hope that you were satisfied with the service quality of this job performed by Halliburton. It is the aim of our management and service personnel to deliver equipment and service of a standard unmatched in the service sector of the energy industry.

Please take the time to let us know if our performance met with your satisfaction. Please be as critical as possible to ensure we constantly improve our service. Your comments are of great value to us and are intended for the exclusive use of Halliburton.

### CUSTOMER SATISFACTION SURVEY

CATEGORY	CUSTOMER SATISFACTION RESPONSE	
Survey Conducted Date	The date the survey was conducted	2/7/2013
Survey Interviewer	The survey interviewer is the person who initiated the survey.	EDWARD ARNOLD (HX46731)
Customer Participation	Did the customer participate in this survey? (Y/N)	Yes
Customer Representative	Enter the Customer representative name	AL DUNNAHOO
HSE	Was our HSE performance satisfactory? Circle Y or N	Yes
Equipment	Were you satisfied with our Equipment? Circle Y or N	Yes
Personnel	Were you satisfied with our people? Circle Y or N	Yes
Customer Comment	Customer's Comment	GOOD JOB MEN

CUSTOMER SIGNATURE



<b>Sales Order #:</b> 900198494	<b>Line Item:</b> 10	<b>Survey Conducted Date:</b> 2/7/2013
<b>Customer:</b> WPX ENERGY ROCKY MOUNTAIN LLC-EBUS		<b>Job Type (BOM):</b> CMT SURFACE CASING BOM
<b>Customer Representative:</b> AL DUNNAHOO		<b>API / UWI: (leave blank if unknown)</b> 05-045-21688
<b>Well Name:</b> SG		<b>Well Number:</b> 533-23
<b>Well Type:</b> Development Well	<b>Well Country:</b> United States of America	
<b>H2S Present:</b> No	<b>Well State:</b> Colorado	<b>Well County:</b> Garfield

### KEY PERFORMANCE INDICATORS

General	
<b>Survey Conducted Date</b> The date the survey was conducted	2/7/2013

Cementing KPI Survey	
<b>Type of Job</b> Select the type of job. (Cementing or Non-Cementing)	0
<b>Select the Maximum Deviation range for this Job</b> What is the highest deviation for the job you just completed? This may not be the maximum well deviation.	Vertical
<b>Total Operating Time (hours)</b> Total Operating Hours Including Rig-up, Pumping, Rig-down. Enter in decimal format.	4
<b>HSE Incident, Accident, Injury</b> HSE Incident, Accident, Injury. This should be recordable incidents only.	No
<b>Was the job purpose achieved?</b> Was the job delivered correctly as per customer agreed design?	Yes
<b>Operating Hours (Pumping Hours)</b> Total number of hours pumping fluid on this job. Enter in decimal format.	1.5
<b>Customer Non-Productive Rig Time (hrs)</b> Lost time due to Halliburton in the start, execution, or completion of an ordered service or product, or delays in a follow-on service. Enter in decimal format. 0 if none.	0
<b>Type of Rig Classification Job Was Performed</b> Type Of Rig (classification) Job Was Performed On	Drilling Rig (Portable)
<b>Number Of JSAs Performed</b> Number Of Jsas Performed	5
<b>Number of Unplanned Shutdowns</b> Unplanned shutdown is when injection stops for any period of time.	0
<b>Was this a Primary Cement Job (Yes / No)</b>	Yes

<b>Sales Order #:</b> 900198494	<b>Line Item:</b> 10	<b>Survey Conducted Date:</b> 2/7/2013
<b>Customer:</b> WPX ENERGY ROCKY MOUNTAIN LLC-EBUS		<b>Job Type (BOM):</b> CMT SURFACE CASING BOM
<b>Customer Representative:</b> AL DUNNAHOO		<b>API / UWI: (leave blank if unknown)</b> 05-045-21688
<b>Well Name:</b> SG		<b>Well Number:</b> 533-23
<b>Well Type:</b> Development Well	<b>Well Country:</b> United States of America	
<b>H2S Present:</b> No	<b>Well State:</b> Colorado	<b>Well County:</b> Garfield

Primary Cement Job= Casing job, Liner job, or Tie-back job.	
<b>Did We Run Wiper Plugs?</b> Did We Run Top And Bottom Casing Wiper Plugs?	Top
<b>Mixing Density of Job Stayed in Designed Density Range (0-100%)</b> Density Range defined as +/- .20 ppg. Calculation: Total BBLs cement mixed at designed density divided by total BBLs of cement multiplied by 100	94
<b>Was Automated Density Control Used?</b> Was Automated Density Control (ADC) Used ?	Yes
<b>Pump Rate (percent) of Job Stayed At Designed Pump Rate</b> Pump Rate range defined as +/- 1bbl/min. Calculation: Total BBLs of fluid pumped at the designed rate divided by Total BBLs of fluid pumped, multiplied by 100	95
<b>Nbr of Remedial Sqz Jobs Rqd - Competition</b> Number Of Remedial Squeeze Jobs Required After Primary Job Performed By Competition	0
<b>Nbr of Remedial Plug Jobs Rqd - HES</b> Number Of Remedial Plug Jobs Needed After Primary Plug Pumped By HES	0
<b>Nbr of Remedial Sqz Jobs Rqd - HES</b> Number Of Remedial Squeeze Jobs Required After Primary Job Performed By HES	0