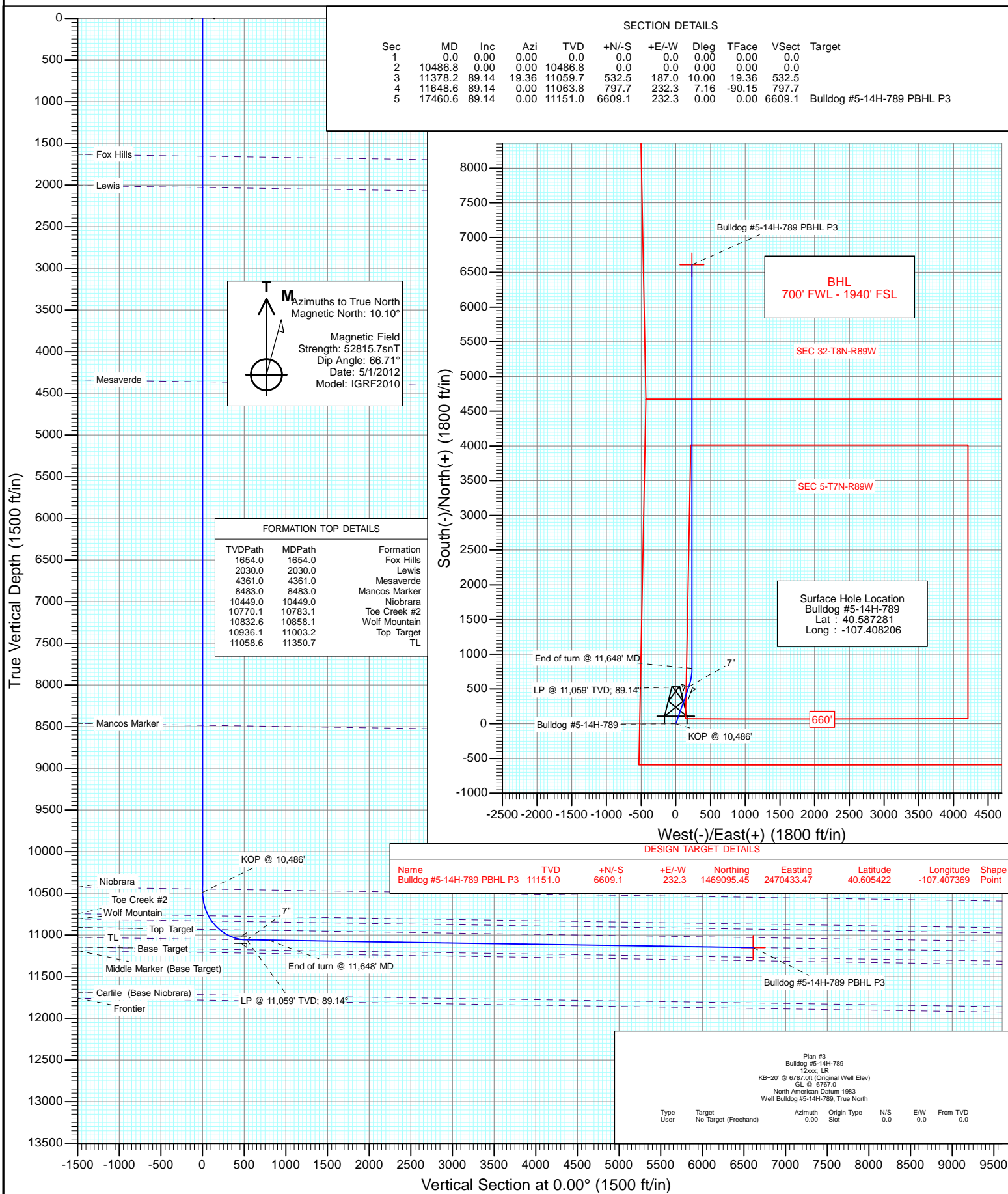


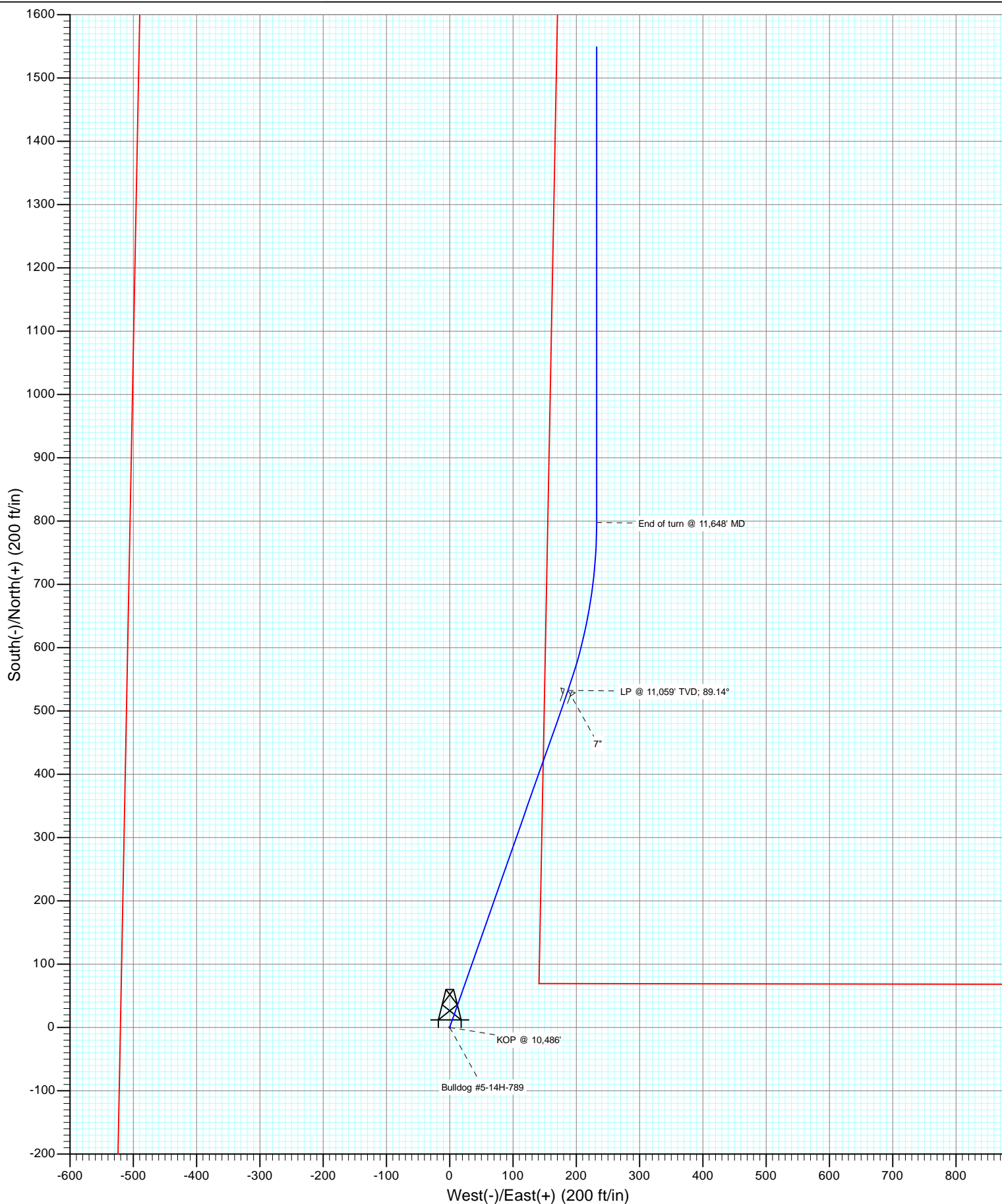


Project: Moffat County, CO
Site: SEC 5-T7N-R89W
Well: Bulldog #5-14H-789
Wellbore: Hz
Design: Plan #3





Project: Moffat County, CO
Site: SEC 5-T7N-R89W
Well: Bulldog #5-14H-789
Wellbore: Hz
Design: Plan #3



Planning Report

Database:	USA EDM 5000 Multi Users DB	Local Co-ordinate Reference:	Well Bulldog #5-14H-789
Company:	Axia Energy	TVD Reference:	KB=20' @ 6787.0ft (Original Well Elev)
Project:	Moffat County, CO	MD Reference:	KB=20' @ 6787.0ft (Original Well Elev)
Site:	SEC 5-T7N-R89W	North Reference:	True
Well:	Bulldog #5-14H-789	Survey Calculation Method:	Minimum Curvature
Wellbore:	Hz		
Design:	Plan #3		

Project	Moffat County, CO		
Map System:	US State Plane 1983	System Datum:	Mean Sea Level
Geo Datum:	North American Datum 1983		
Map Zone:	Colorado Northern Zone		

Site		SEC 5-T7N-R89W			
Site Position:		Northing:	1,462,492.93 ft	Latitude:	40.587281
From:	Lat/Long	Easting:	2,470,059.03 ft	Longitude:	-107.408206
Position Uncertainty:	0.0 ft	Slot Radius:	13.200 in	Grid Convergence:	-1.23 °

Well	Bulldog #5-14H-789					
Well Position	+N/-S	0.0 ft	Northing:	1,462,492.93 ft	Latitude:	40.587281
	+E/-W	0.0 ft	Easting:	2,470,059.03 ft	Longitude:	-107.408206
Position Uncertainty		0.0 ft	Wellhead Elevation:	ft	Ground Level:	6,767.0 ft

Wellbore	Hz				
Magnetics	Model Name	Sample Date	Declination (°)	Dip Angle (°)	Field Strength (nT)
	IGRF2010	5/1/2012	10.10	66.71	52,816

Design	Plan #3			
Audit Notes:				
Version:	Phase:	PLAN	Tie On Depth:	0.0
Vertical Section:	Depth From (TVD) (ft)	+N/-S (ft)	+E/-W (ft)	Direction (°)
	0.0	0.0	0.0	0.00

Plan Sections										
Measured Depth (ft)	Inclination (°)	Azimuth (°)	Vertical Depth (ft)	+N/-S (ft)	+E/-W (ft)	Dogleg Rate (°/100ft)	Build Rate (°/100ft)	Turn Rate (°/100ft)	TFO (°)	Target
0.0	0.00	0.00	0.0	0.0	0.0	0.00	0.00	0.00	0.00	
10,486.8	0.00	0.00	10,486.8	0.0	0.0	0.00	0.00	0.00	0.00	
11,378.2	89.14	19.36	11,059.7	532.5	187.0	10.00	10.00	0.00	19.36	
11,648.6	89.14	0.00	11,063.8	797.7	232.3	7.16	0.00	-7.16	-90.15	
17,460.6	89.14	0.00	11,151.0	6,609.1	232.3	0.00	0.00	0.00	0.00	Bulldog #5-14H-789 F

Planning Report

Database:	USA EDM 5000 Multi Users DB	Local Co-ordinate Reference:	Well Bulldog #5-14H-789
Company:	Axia Energy	TVD Reference:	KB=20' @ 6787.0ft (Original Well Elev)
Project:	Moffat County, CO	MD Reference:	KB=20' @ 6787.0ft (Original Well Elev)
Site:	SEC 5-T7N-R89W	North Reference:	True
Well:	Bulldog #5-14H-789	Survey Calculation Method:	Minimum Curvature
Wellbore:	Hz		
Design:	Plan #3		

Planned Survey									
Measured Depth (ft)	Inclination (°)	Azimuth (°)	Vertical Depth (ft)	+N/-S (ft)	+E/-W (ft)	Vertical Section (ft)	Dogleg Rate (°/100ft)	Build Rate (°/100ft)	Comments / Formations
0.0	0.00	0.00	0.0	0.0	0.0	0.0	0.00	0.00	
100.0	0.00	0.00	100.0	0.0	0.0	0.0	0.00	0.00	
200.0	0.00	0.00	200.0	0.0	0.0	0.0	0.00	0.00	
300.0	0.00	0.00	300.0	0.0	0.0	0.0	0.00	0.00	
400.0	0.00	0.00	400.0	0.0	0.0	0.0	0.00	0.00	
500.0	0.00	0.00	500.0	0.0	0.0	0.0	0.00	0.00	
600.0	0.00	0.00	600.0	0.0	0.0	0.0	0.00	0.00	
700.0	0.00	0.00	700.0	0.0	0.0	0.0	0.00	0.00	
800.0	0.00	0.00	800.0	0.0	0.0	0.0	0.00	0.00	
900.0	0.00	0.00	900.0	0.0	0.0	0.0	0.00	0.00	
1,000.0	0.00	0.00	1,000.0	0.0	0.0	0.0	0.00	0.00	
1,100.0	0.00	0.00	1,100.0	0.0	0.0	0.0	0.00	0.00	
1,200.0	0.00	0.00	1,200.0	0.0	0.0	0.0	0.00	0.00	
1,300.0	0.00	0.00	1,300.0	0.0	0.0	0.0	0.00	0.00	
1,400.0	0.00	0.00	1,400.0	0.0	0.0	0.0	0.00	0.00	
1,500.0	0.00	0.00	1,500.0	0.0	0.0	0.0	0.00	0.00	
1,600.0	0.00	0.00	1,600.0	0.0	0.0	0.0	0.00	0.00	
1,654.0	0.00	0.00	1,654.0	0.0	0.0	0.0	0.00	0.00	Fox Hills
1,700.0	0.00	0.00	1,700.0	0.0	0.0	0.0	0.00	0.00	
1,800.0	0.00	0.00	1,800.0	0.0	0.0	0.0	0.00	0.00	
1,900.0	0.00	0.00	1,900.0	0.0	0.0	0.0	0.00	0.00	
2,000.0	0.00	0.00	2,000.0	0.0	0.0	0.0	0.00	0.00	
2,030.0	0.00	0.00	2,030.0	0.0	0.0	0.0	0.00	0.00	Lewis
2,100.0	0.00	0.00	2,100.0	0.0	0.0	0.0	0.00	0.00	
2,200.0	0.00	0.00	2,200.0	0.0	0.0	0.0	0.00	0.00	
2,300.0	0.00	0.00	2,300.0	0.0	0.0	0.0	0.00	0.00	
2,400.0	0.00	0.00	2,400.0	0.0	0.0	0.0	0.00	0.00	
2,500.0	0.00	0.00	2,500.0	0.0	0.0	0.0	0.00	0.00	
2,600.0	0.00	0.00	2,600.0	0.0	0.0	0.0	0.00	0.00	
2,700.0	0.00	0.00	2,700.0	0.0	0.0	0.0	0.00	0.00	
2,800.0	0.00	0.00	2,800.0	0.0	0.0	0.0	0.00	0.00	
2,900.0	0.00	0.00	2,900.0	0.0	0.0	0.0	0.00	0.00	
3,000.0	0.00	0.00	3,000.0	0.0	0.0	0.0	0.00	0.00	
3,100.0	0.00	0.00	3,100.0	0.0	0.0	0.0	0.00	0.00	
3,200.0	0.00	0.00	3,200.0	0.0	0.0	0.0	0.00	0.00	
3,300.0	0.00	0.00	3,300.0	0.0	0.0	0.0	0.00	0.00	
3,400.0	0.00	0.00	3,400.0	0.0	0.0	0.0	0.00	0.00	
3,500.0	0.00	0.00	3,500.0	0.0	0.0	0.0	0.00	0.00	
3,600.0	0.00	0.00	3,600.0	0.0	0.0	0.0	0.00	0.00	
3,700.0	0.00	0.00	3,700.0	0.0	0.0	0.0	0.00	0.00	
3,800.0	0.00	0.00	3,800.0	0.0	0.0	0.0	0.00	0.00	
3,900.0	0.00	0.00	3,900.0	0.0	0.0	0.0	0.00	0.00	
4,000.0	0.00	0.00	4,000.0	0.0	0.0	0.0	0.00	0.00	
4,100.0	0.00	0.00	4,100.0	0.0	0.0	0.0	0.00	0.00	
4,200.0	0.00	0.00	4,200.0	0.0	0.0	0.0	0.00	0.00	
4,300.0	0.00	0.00	4,300.0	0.0	0.0	0.0	0.00	0.00	
4,361.0	0.00	0.00	4,361.0	0.0	0.0	0.0	0.00	0.00	Mesaverde
4,400.0	0.00	0.00	4,400.0	0.0	0.0	0.0	0.00	0.00	
4,500.0	0.00	0.00	4,500.0	0.0	0.0	0.0	0.00	0.00	
4,600.0	0.00	0.00	4,600.0	0.0	0.0	0.0	0.00	0.00	
4,700.0	0.00	0.00	4,700.0	0.0	0.0	0.0	0.00	0.00	
4,800.0	0.00	0.00	4,800.0	0.0	0.0	0.0	0.00	0.00	

Planning Report

Database:	USA EDM 5000 Multi Users DB	Local Co-ordinate Reference:	Well Bulldog #5-14H-789
Company:	Axia Energy	TVD Reference:	KB=20' @ 6787.0ft (Original Well Elev)
Project:	Moffat County, CO	MD Reference:	KB=20' @ 6787.0ft (Original Well Elev)
Site:	SEC 5-T7N-R89W	North Reference:	True
Well:	Bulldog #5-14H-789	Survey Calculation Method:	Minimum Curvature
Wellbore:	Hz		
Design:	Plan #3		

Planned Survey									
Measured Depth (ft)	Inclination (°)	Azimuth (°)	Vertical Depth (ft)	+N/-S (ft)	+E/-W (ft)	Vertical Section (ft)	Dogleg Rate (°/100ft)	Build Rate (°/100ft)	Comments / Formations
4,900.0	0.00	0.00	4,900.0	0.0	0.0	0.0	0.00	0.00	
5,000.0	0.00	0.00	5,000.0	0.0	0.0	0.0	0.00	0.00	
5,100.0	0.00	0.00	5,100.0	0.0	0.0	0.0	0.00	0.00	
5,200.0	0.00	0.00	5,200.0	0.0	0.0	0.0	0.00	0.00	
5,300.0	0.00	0.00	5,300.0	0.0	0.0	0.0	0.00	0.00	
5,400.0	0.00	0.00	5,400.0	0.0	0.0	0.0	0.00	0.00	
5,500.0	0.00	0.00	5,500.0	0.0	0.0	0.0	0.00	0.00	
5,600.0	0.00	0.00	5,600.0	0.0	0.0	0.0	0.00	0.00	
5,700.0	0.00	0.00	5,700.0	0.0	0.0	0.0	0.00	0.00	
5,800.0	0.00	0.00	5,800.0	0.0	0.0	0.0	0.00	0.00	
5,900.0	0.00	0.00	5,900.0	0.0	0.0	0.0	0.00	0.00	
6,000.0	0.00	0.00	6,000.0	0.0	0.0	0.0	0.00	0.00	
6,100.0	0.00	0.00	6,100.0	0.0	0.0	0.0	0.00	0.00	
6,200.0	0.00	0.00	6,200.0	0.0	0.0	0.0	0.00	0.00	
6,300.0	0.00	0.00	6,300.0	0.0	0.0	0.0	0.00	0.00	
6,400.0	0.00	0.00	6,400.0	0.0	0.0	0.0	0.00	0.00	
6,500.0	0.00	0.00	6,500.0	0.0	0.0	0.0	0.00	0.00	
6,600.0	0.00	0.00	6,600.0	0.0	0.0	0.0	0.00	0.00	
6,700.0	0.00	0.00	6,700.0	0.0	0.0	0.0	0.00	0.00	
6,800.0	0.00	0.00	6,800.0	0.0	0.0	0.0	0.00	0.00	
6,900.0	0.00	0.00	6,900.0	0.0	0.0	0.0	0.00	0.00	
7,000.0	0.00	0.00	7,000.0	0.0	0.0	0.0	0.00	0.00	
7,100.0	0.00	0.00	7,100.0	0.0	0.0	0.0	0.00	0.00	
7,200.0	0.00	0.00	7,200.0	0.0	0.0	0.0	0.00	0.00	
7,300.0	0.00	0.00	7,300.0	0.0	0.0	0.0	0.00	0.00	
7,400.0	0.00	0.00	7,400.0	0.0	0.0	0.0	0.00	0.00	
7,500.0	0.00	0.00	7,500.0	0.0	0.0	0.0	0.00	0.00	
7,600.0	0.00	0.00	7,600.0	0.0	0.0	0.0	0.00	0.00	
7,700.0	0.00	0.00	7,700.0	0.0	0.0	0.0	0.00	0.00	
7,800.0	0.00	0.00	7,800.0	0.0	0.0	0.0	0.00	0.00	
7,900.0	0.00	0.00	7,900.0	0.0	0.0	0.0	0.00	0.00	
8,000.0	0.00	0.00	8,000.0	0.0	0.0	0.0	0.00	0.00	
8,100.0	0.00	0.00	8,100.0	0.0	0.0	0.0	0.00	0.00	
8,200.0	0.00	0.00	8,200.0	0.0	0.0	0.0	0.00	0.00	
8,300.0	0.00	0.00	8,300.0	0.0	0.0	0.0	0.00	0.00	
8,400.0	0.00	0.00	8,400.0	0.0	0.0	0.0	0.00	0.00	
8,483.0	0.00	0.00	8,483.0	0.0	0.0	0.0	0.00	0.00	Mancos Marker
8,500.0	0.00	0.00	8,500.0	0.0	0.0	0.0	0.00	0.00	
8,600.0	0.00	0.00	8,600.0	0.0	0.0	0.0	0.00	0.00	
8,700.0	0.00	0.00	8,700.0	0.0	0.0	0.0	0.00	0.00	
8,800.0	0.00	0.00	8,800.0	0.0	0.0	0.0	0.00	0.00	
8,900.0	0.00	0.00	8,900.0	0.0	0.0	0.0	0.00	0.00	
9,000.0	0.00	0.00	9,000.0	0.0	0.0	0.0	0.00	0.00	
9,100.0	0.00	0.00	9,100.0	0.0	0.0	0.0	0.00	0.00	
9,200.0	0.00	0.00	9,200.0	0.0	0.0	0.0	0.00	0.00	
9,300.0	0.00	0.00	9,300.0	0.0	0.0	0.0	0.00	0.00	
9,400.0	0.00	0.00	9,400.0	0.0	0.0	0.0	0.00	0.00	
9,500.0	0.00	0.00	9,500.0	0.0	0.0	0.0	0.00	0.00	
9,600.0	0.00	0.00	9,600.0	0.0	0.0	0.0	0.00	0.00	
9,700.0	0.00	0.00	9,700.0	0.0	0.0	0.0	0.00	0.00	
9,800.0	0.00	0.00	9,800.0	0.0	0.0	0.0	0.00	0.00	
9,900.0	0.00	0.00	9,900.0	0.0	0.0	0.0	0.00	0.00	

Planning Report

Database:	USA EDM 5000 Multi Users DB	Local Co-ordinate Reference:	Well Bulldog #5-14H-789
Company:	Axia Energy	TVD Reference:	KB=20' @ 6787.0ft (Original Well Elev)
Project:	Moffat County, CO	MD Reference:	KB=20' @ 6787.0ft (Original Well Elev)
Site:	SEC 5-T7N-R89W	North Reference:	True
Well:	Bulldog #5-14H-789	Survey Calculation Method:	Minimum Curvature
Wellbore:	Hz		
Design:	Plan #3		

Planned Survey									
Measured Depth (ft)	Inclination (°)	Azimuth (°)	Vertical Depth (ft)	+N/-S (ft)	+E/-W (ft)	Vertical Section (ft)	Dogleg Rate (°/100ft)	Build Rate (°/100ft)	Comments / Formations
10,000.0	0.00	0.00	10,000.0	0.0	0.0	0.0	0.00	0.00	
10,100.0	0.00	0.00	10,100.0	0.0	0.0	0.0	0.00	0.00	
10,200.0	0.00	0.00	10,200.0	0.0	0.0	0.0	0.00	0.00	
10,300.0	0.00	0.00	10,300.0	0.0	0.0	0.0	0.00	0.00	
10,400.0	0.00	0.00	10,400.0	0.0	0.0	0.0	0.00	0.00	
10,449.0	0.00	0.00	10,449.0	0.0	0.0	0.0	0.00	0.00	Niobrara
10,486.8	0.00	0.00	10,486.8	0.0	0.0	0.0	0.00	0.00	KOP @ 10,486'
10,500.0	1.32	19.36	10,500.0	0.1	0.1	0.1	10.00	10.00	
10,600.0	11.32	19.36	10,599.3	10.5	3.7	10.5	10.00	10.00	
10,700.0	21.32	19.36	10,695.1	37.0	13.0	37.0	10.00	10.00	
10,783.1	29.63	19.36	10,770.1	70.7	24.8	70.7	10.00	10.00	Toe Creek #2
10,800.0	31.32	19.36	10,784.6	78.8	27.7	78.8	10.00	10.00	
10,858.1	37.13	19.36	10,832.6	109.6	38.5	109.6	10.00	10.00	Wolf Mountain
10,900.0	41.32	19.36	10,865.1	134.6	47.3	134.6	10.00	10.00	
11,000.0	51.32	19.36	10,934.1	202.7	71.2	202.7	10.00	10.00	
11,003.2	51.64	19.36	10,936.1	205.1	72.1	205.1	10.00	10.00	Top Target
11,100.0	61.32	19.36	10,989.5	281.2	98.8	281.2	10.00	10.00	
11,200.0	71.32	19.36	11,029.6	367.4	129.1	367.4	10.00	10.00	
11,300.0	81.32	19.36	11,053.2	459.0	161.2	459.0	10.00	10.00	
11,350.7	86.39	19.36	11,058.6	506.6	177.9	506.6	10.00	10.00	TL
11,378.2	89.14	19.36	11,059.7	532.5	187.1	532.5	10.00	10.00	LP @ 11,059' TVD; 89.14° - 7"
11,400.0	89.14	17.79	11,060.0	553.1	194.0	553.1	7.16	-0.02	
11,500.0	89.13	10.64	11,061.5	650.0	218.5	650.0	7.16	-0.01	
11,600.0	89.13	3.48	11,063.0	749.2	230.8	749.2	7.16	0.00	
11,648.6	89.14	0.00	11,063.8	797.7	232.3	797.7	7.16	0.01	End of turn @ 11,648' MD
11,700.0	89.14	0.00	11,064.5	849.1	232.3	849.1	0.00	0.00	
11,800.0	89.14	0.00	11,066.0	949.1	232.3	949.1	0.00	0.00	
11,900.0	89.14	0.00	11,067.5	1,049.1	232.3	1,049.1	0.00	0.00	
12,000.0	89.14	0.00	11,069.0	1,149.1	232.3	1,149.1	0.00	0.00	
12,100.0	89.14	0.00	11,070.5	1,249.1	232.3	1,249.1	0.00	0.00	
12,200.0	89.14	0.00	11,072.0	1,349.1	232.3	1,349.1	0.00	0.00	
12,300.0	89.14	0.00	11,073.5	1,449.1	232.3	1,449.1	0.00	0.00	
12,400.0	89.14	0.00	11,075.0	1,549.0	232.3	1,549.0	0.00	0.00	
12,500.0	89.14	0.00	11,076.5	1,649.0	232.3	1,649.0	0.00	0.00	
12,600.0	89.14	0.00	11,078.0	1,749.0	232.3	1,749.0	0.00	0.00	
12,700.0	89.14	0.00	11,079.5	1,849.0	232.3	1,849.0	0.00	0.00	
12,800.0	89.14	0.00	11,081.0	1,949.0	232.3	1,949.0	0.00	0.00	
12,900.0	89.14	0.00	11,082.5	2,049.0	232.3	2,049.0	0.00	0.00	
13,000.0	89.14	0.00	11,084.0	2,149.0	232.3	2,149.0	0.00	0.00	
13,100.0	89.14	0.00	11,085.6	2,249.0	232.3	2,249.0	0.00	0.00	
13,200.0	89.14	0.00	11,087.1	2,349.0	232.3	2,349.0	0.00	0.00	
13,300.0	89.14	0.00	11,088.6	2,448.9	232.3	2,448.9	0.00	0.00	
13,400.0	89.14	0.00	11,090.1	2,548.9	232.3	2,548.9	0.00	0.00	
13,500.0	89.14	0.00	11,091.6	2,648.9	232.3	2,648.9	0.00	0.00	
13,600.0	89.14	0.00	11,093.1	2,748.9	232.3	2,748.9	0.00	0.00	
13,700.0	89.14	0.00	11,094.6	2,848.9	232.3	2,848.9	0.00	0.00	
13,800.0	89.14	0.00	11,096.1	2,948.9	232.3	2,948.9	0.00	0.00	
13,900.0	89.14	0.00	11,097.6	3,048.9	232.3	3,048.9	0.00	0.00	
14,000.0	89.14	0.00	11,099.1	3,148.9	232.3	3,148.9	0.00	0.00	
14,100.0	89.14	0.00	11,100.6	3,248.8	232.3	3,248.8	0.00	0.00	
14,200.0	89.14	0.00	11,102.1	3,348.8	232.3	3,348.8	0.00	0.00	
14,300.0	89.14	0.00	11,103.6	3,448.8	232.3	3,448.8	0.00	0.00	

Planning Report

Database:	USA EDM 5000 Multi Users DB	Local Co-ordinate Reference:	Well Bulldog #5-14H-789
Company:	Axia Energy	TVD Reference:	KB=20' @ 6787.0ft (Original Well Elev)
Project:	Moffat County, CO	MD Reference:	KB=20' @ 6787.0ft (Original Well Elev)
Site:	SEC 5-T7N-R89W	North Reference:	True
Well:	Bulldog #5-14H-789	Survey Calculation Method:	Minimum Curvature
Wellbore:	Hz		
Design:	Plan #3		

Planned Survey

Measured Depth (ft)	Inclination (°)	Azimuth (°)	Vertical Depth (ft)	+N/-S (ft)	+E/-W (ft)	Vertical Section (ft)	Dogleg Rate (°/100ft)	Build Rate (°/100ft)	Comments / Formations
14,400.0	89.14	0.00	11,105.1	3,548.8	232.3	3,548.8	0.00	0.00	
14,500.0	89.14	0.00	11,106.6	3,648.8	232.3	3,648.8	0.00	0.00	
14,600.0	89.14	0.00	11,108.1	3,748.8	232.3	3,748.8	0.00	0.00	
14,700.0	89.14	0.00	11,109.6	3,848.8	232.3	3,848.8	0.00	0.00	
14,800.0	89.14	0.00	11,111.1	3,948.8	232.3	3,948.8	0.00	0.00	
14,900.0	89.14	0.00	11,112.6	4,048.8	232.3	4,048.8	0.00	0.00	
15,000.0	89.14	0.00	11,114.1	4,148.7	232.3	4,148.7	0.00	0.00	
15,100.0	89.14	0.00	11,115.6	4,248.7	232.3	4,248.7	0.00	0.00	
15,200.0	89.14	0.00	11,117.1	4,348.7	232.3	4,348.7	0.00	0.00	
15,300.0	89.14	0.00	11,118.6	4,448.7	232.3	4,448.7	0.00	0.00	
15,400.0	89.14	0.00	11,120.1	4,548.7	232.3	4,548.7	0.00	0.00	
15,500.0	89.14	0.00	11,121.6	4,648.7	232.3	4,648.7	0.00	0.00	
15,600.0	89.14	0.00	11,123.1	4,748.7	232.3	4,748.7	0.00	0.00	
15,700.0	89.14	0.00	11,124.6	4,848.7	232.3	4,848.7	0.00	0.00	
15,800.0	89.14	0.00	11,126.1	4,948.7	232.3	4,948.7	0.00	0.00	
15,900.0	89.14	0.00	11,127.6	5,048.6	232.3	5,048.6	0.00	0.00	
16,000.0	89.14	0.00	11,129.1	5,148.6	232.3	5,148.6	0.00	0.00	
16,100.0	89.14	0.00	11,130.6	5,248.6	232.3	5,248.6	0.00	0.00	
16,200.0	89.14	0.00	11,132.1	5,348.6	232.3	5,348.6	0.00	0.00	
16,300.0	89.14	0.00	11,133.6	5,448.6	232.3	5,448.6	0.00	0.00	
16,400.0	89.14	0.00	11,135.1	5,548.6	232.3	5,548.6	0.00	0.00	
16,500.0	89.14	0.00	11,136.6	5,648.6	232.3	5,648.6	0.00	0.00	
16,600.0	89.14	0.00	11,138.1	5,748.6	232.3	5,748.6	0.00	0.00	
16,700.0	89.14	0.00	11,139.6	5,848.6	232.3	5,848.6	0.00	0.00	
16,800.0	89.14	0.00	11,141.1	5,948.5	232.3	5,948.5	0.00	0.00	
16,900.0	89.14	0.00	11,142.6	6,048.5	232.3	6,048.5	0.00	0.00	
17,000.0	89.14	0.00	11,144.1	6,148.5	232.3	6,148.5	0.00	0.00	
17,100.0	89.14	0.00	11,145.6	6,248.5	232.3	6,248.5	0.00	0.00	
17,200.0	89.14	0.00	11,147.1	6,348.5	232.3	6,348.5	0.00	0.00	
17,300.0	89.14	0.00	11,148.6	6,448.5	232.3	6,448.5	0.00	0.00	
17,400.0	89.14	0.00	11,150.1	6,548.5	232.3	6,548.5	0.00	0.00	
17,460.6	89.14	0.00	11,151.0	6,609.1	232.3	6,609.1	0.00	0.00	TD at 17460.6 - Bulldog #5-14H-789 PBHL P3 -

Targets

Target Name	Dip Angle (°)	Dip Dir. (°)	TVD (ft)	+N/-S (ft)	+E/-W (ft)	Northing (ft)	Easting (ft)	Latitude	Longitude
- hit/miss target									
- Shape									
Bulldog #5-14H-789 PBH	0.00	0.00	11,151.0	6,609.1	232.3	1,469,095.45	2,470,433.47	40.605422	-107.407369
- plan hits target center									
- Point									
Bulldog #5-14H-789 PBH	0.00	0.00	10,749.0	9,299.4	4,210.1	1,471,699.55	2,474,468.20	40.612806	-107.393042
- plan misses target center by 4818.9ft at 17460.6ft MD (11151.0 TVD, 6609.1 N, 232.3 E)									
- Point									
Bulldog #5-14H-789 PBH	0.00	0.00	11,051.0	9,299.4	4,210.1	1,471,699.55	2,474,468.20	40.612806	-107.393042
- plan misses target center by 4803.2ft at 17460.6ft MD (11151.0 TVD, 6609.1 N, 232.3 E)									
- Point									

Planning Report

Database:	USA EDM 5000 Multi Users DB	Local Co-ordinate Reference:	Well Bulldog #5-14H-789
Company:	Axia Energy	TVD Reference:	KB=20' @ 6787.0ft (Original Well Elev)
Project:	Moffat County, CO	MD Reference:	KB=20' @ 6787.0ft (Original Well Elev)
Site:	SEC 5-T7N-R89W	North Reference:	True
Well:	Bulldog #5-14H-789	Survey Calculation Method:	Minimum Curvature
Wellbore:	Hz		
Design:	Plan #3		

Casing Points					
Measured Depth (ft)	Vertical Depth (ft)	Name	Casing Diameter (in)	Hole Diameter (in)	
11,378.2	11,059.7	7"	0.000	0.000	

Formations					
Measured Depth (ft)	Vertical Depth (ft)	Name	Lithology	Dip (°)	Dip Direction (°)
1,654.0	1,654.0	Fox Hills		0.86	0.00
2,030.0	2,030.0	Lewis		0.86	0.00
4,361.0	4,361.0	Mesaverde		0.86	0.00
8,483.0	8,483.0	Mancos Marker		0.86	0.00
10,449.0	10,449.0	Niobrara		0.86	0.00
10,783.1	10,769.0	Toe Creek #2		0.86	0.00
10,858.1	10,831.0	Wolf Mountain		0.86	0.00
11,003.2	10,933.0	Top Target		0.86	0.00
11,350.7	11,051.0	TL		0.86	0.00

Plan Annotations					
Measured Depth (ft)	Vertical Depth (ft)	Local Coordinates			
		+N/-S (ft)	+E/-W (ft)	Comment	
10,486.8	10,486.8	0.0	0.0	KOP @ 10,486'	
11,378.2	11,059.7	532.5	187.0	LP @ 11,059' TVD; 89.14°	
11,648.6	11,063.8	797.7	232.3	End of turn @ 11,648' MD	
17,460.6	11,151.0	6,609.1	232.3	TD at 17460.6	